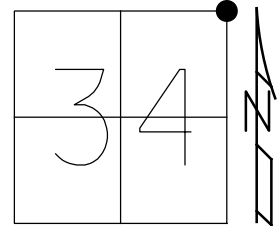


O.D.O.T. DISTRICT 2 SURVEY OFFICE (USE ONLY)

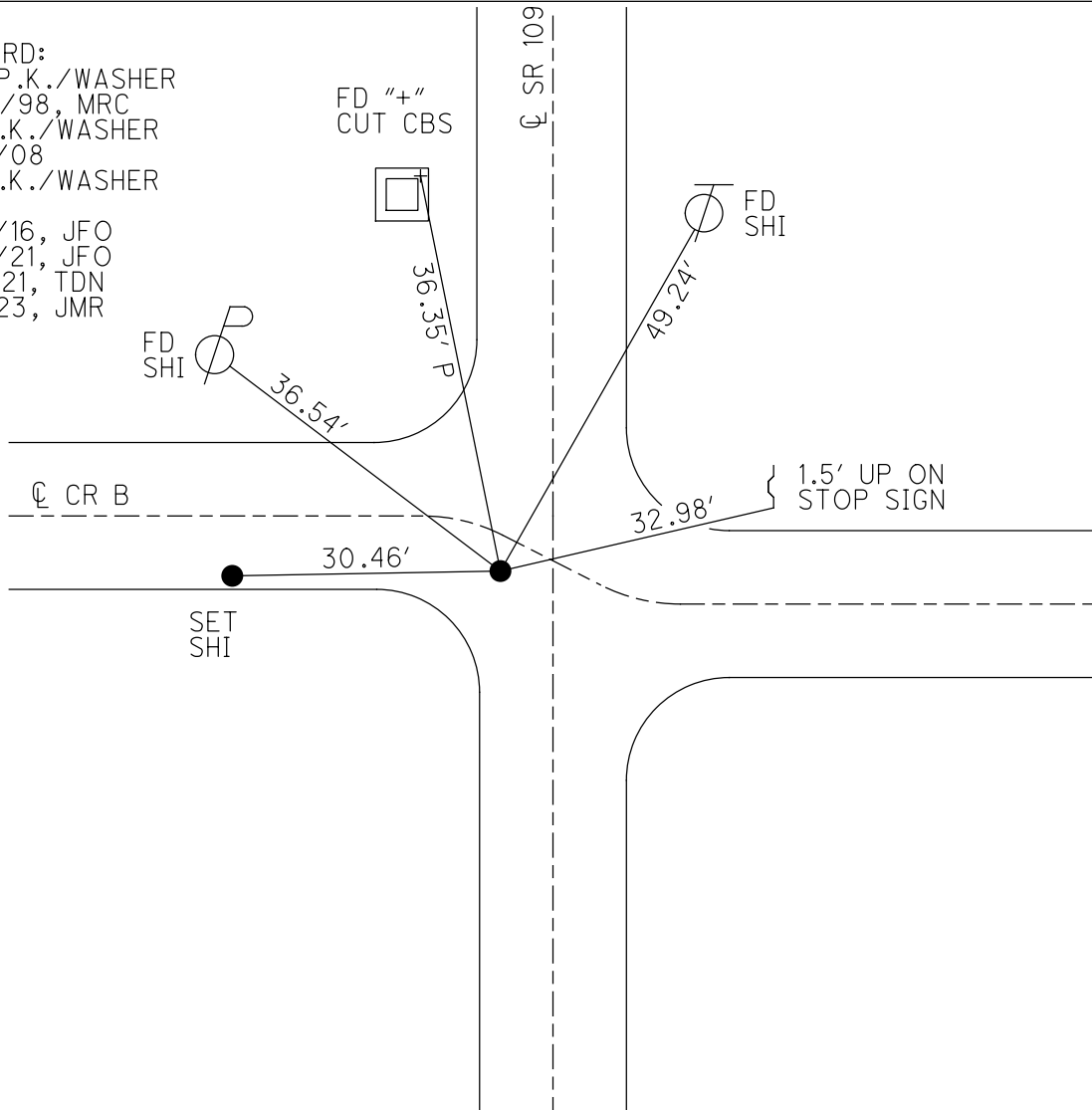
PERSONNEL \_\_\_\_\_ REFERENCE NO. 3 SHEET 4 OF 25  
 NOTES AUBLE DATE 5/18/21 ROUTE SR 109  
 H.C. NIESE WEATHER SUNNY COUNTY HENRY  
 R.C. O'DONNELL TEMP. 70° TOWNSHIP MARION  
 DWG BY NIESE PID PAVETRAIN SECTION 34  
 T 3 N R 7 E

TYPE MONUMENT P.K./WASHER  
 ON SURFACE - ~~BELOW~~ ON  
 OFFSET  $\text{\textcircled{C}}$  PAVEMENT 5.2' LT : ~~RT~~  
- TO - EDGE PAVEMENT 5.0' S. OF  $\text{\textcircled{C}}$  W  
 STATION: 53+05



HORZ. DATUM: NAD83(2011) GEOID: NAVD88(2012A)  
 GRID: NORTHING: 555593.349 EASTING: 1545844.593

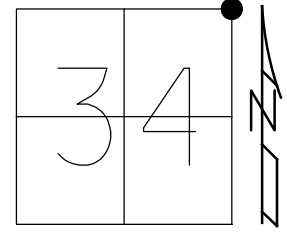
RECORD:  
 SET P.K./WASHER  
 9/23/98, MRC  
 FD P.K./WASHER  
 5/19/08  
 FD P.K./WASHER  
 REF3  
 6/17/16, JFO  
 5/18/21, JFO  
 9/3/21, TDN  
 1/11/23, JMR



O.D.O.T. DISTRICT 2 SURVEY OFFICE (USE ONLY)

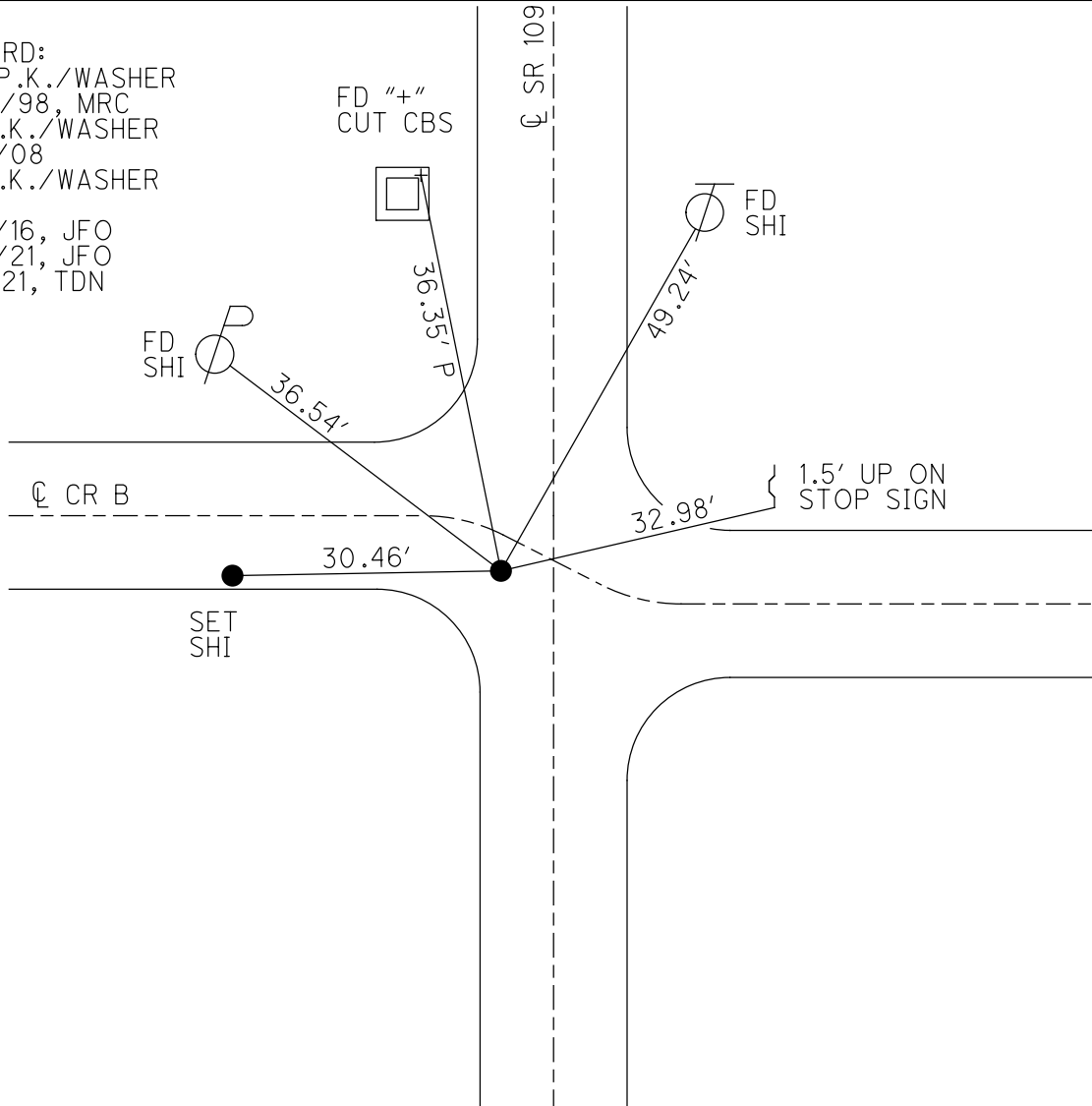
PERSONNEL \_\_\_\_\_ REFERENCE NO. 3 SHEET 4 OF 25  
 NOTES AUBLE DATE 5/18/21 ROUTE SR 109  
 H.C. NIESE WEATHER SUNNY COUNTY HENRY  
 R.C. O'DONNELL TEMP. 70° TOWNSHIP MARION  
 DWG BY NIESE PID PAVETRAIN SECTION 34  
 T 3 N R 7 E

TYPE MONUMENT P.K./WASHER  
 ON SURFACE - ~~BELOW~~ ON  
 OFFSET CL PAVEMENT 5.2' LT : ~~RT~~  
- TO - EDGE PAVEMENT 5.0' S. OF CL W  
 STATION: 53+05



HORZ.DATUM: NAD83(2011) GEOID: NAVD88(2012A)  
 GRID: NORTHING: 555593.349 EASTING: 1545844.593

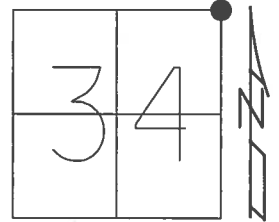
RECORD:  
 SET P.K./WASHER  
 9/23/98, MRC  
 FD P.K./WASHER  
 5/19/08  
 FD P.K./WASHER  
 REF3  
 6/17/16, JFO  
 5/18/21, JFO  
 9/3/21, TDN



O.D.O.T. DISTRICT 2 SURVEY OFFICE (USE ONLY)

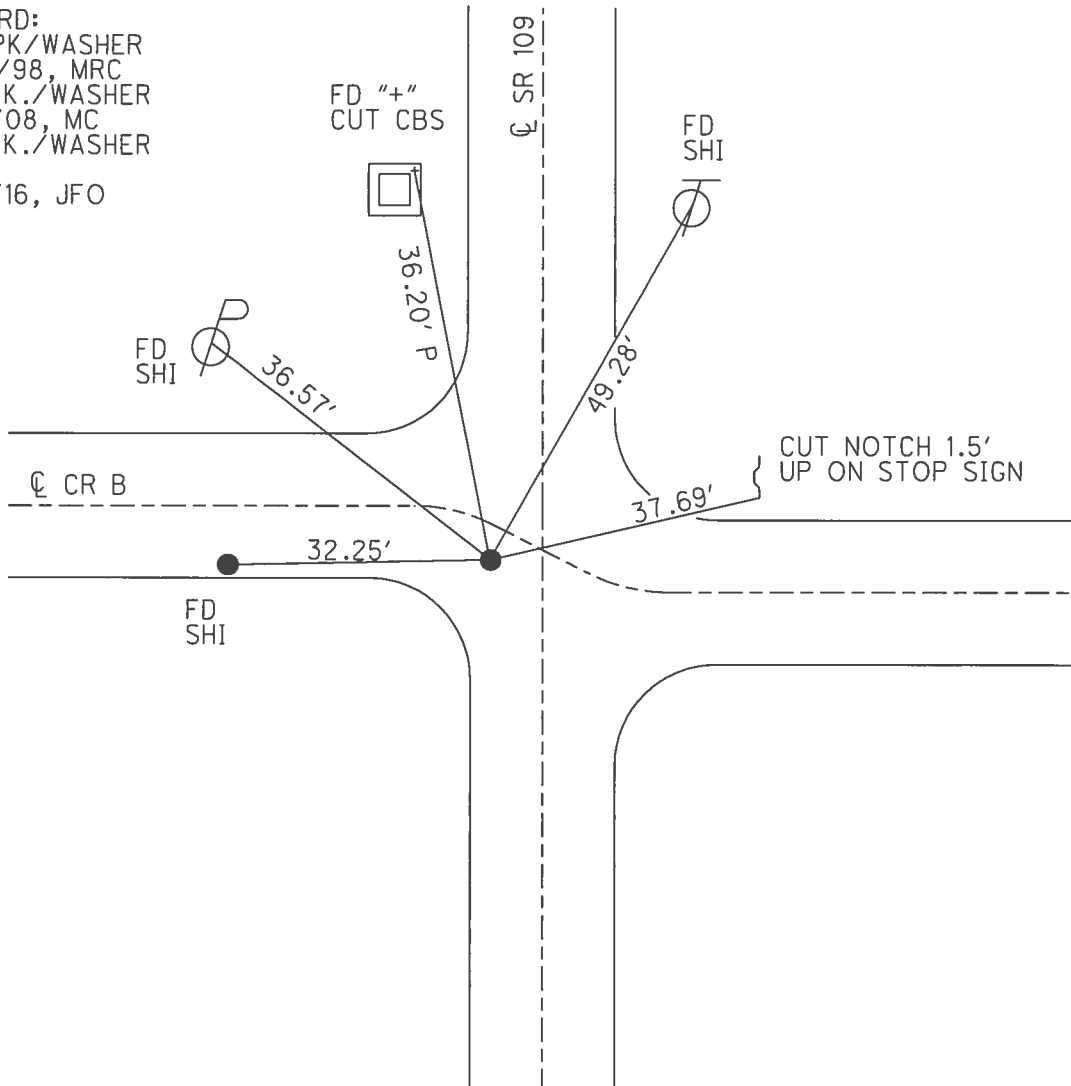
PERSONNEL \_\_\_\_\_ REFERENCE NO. 3 SHEET 4 OF 26  
 NOTES HUSS DATE 5/19/00 ROUTE SR 109  
 H.C. CANTERBURY WEATHER SUNNY COUNTY HENRY  
 R.C. HUSS TEMP. 57° TOWNSHIP MARION  
 \_\_\_\_\_ SECTION 34  
 \_\_\_\_\_ T 3 N R 7 E

TYPE MONUMENT P.K./WASHER  
 ON SURFACE - ~~BELOW~~ ON  
 LEFT - ☉ PAV'T - ~~RIGHT~~ 5.2', 5' S OF ☉ W  
- TO - EDGE PAVEMENT  
 S.L.M. 53+05



Grid: Northing: 555593.349 Easting: 1545844.593

RECORD:  
 SET PK/WASHER  
 9/23/98, MRC  
 FD P.K./WASHER  
 5/19/08, MC  
 FD P.K./WASHER  
 REF3  
 6/17/16, JFO



O.D.O.T. DISTRICT 2 SURVEY OFFICE

PERSONNEL \_\_\_\_\_

REFERENCE NO. 3

SHEET 3 OF 21

NOTES Canterbury

H.C. Rouses

R.C. Canterbury

DATE 5-7-98

WEATHER OVERCAST

TEMP. 65°

ROUTE 109

COUNTY HENRY

TOWNSHIP MARION

SECTION 34

T. 3 N. R. 7 E.

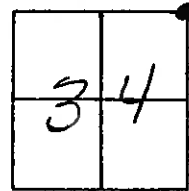
TYPE MONUMENT SM. RR. S.P.K.

ON SURFACE - ~~BELOW~~ SURFACE

LEFT - PAV'T. - RIGHT 6.0' Lt & 1/2 S. of West

TO EDGE PAVEMENT

S.L.M. 1 + 622.95 SLK (53+05)



RESET PK./WASHER  
9-23-98  
MRE

FND 7' CUT TOP  
NE CORNER C.B.



FND SHI ME/S

FND SHI. SE/S  
IN STUB POLE

CUT NOTCH 1.5'  
UP ON STOP SIGN

PAV'T Co. Rd "B"

PAV'T Co. Rd "B"

SET SHI. IN PAV'T → 32.25'

S.P. 109

PAV'T

DRAWN 10-7-98  
TR



ODOT. DISTRICT 2 SURVEY OFFICE

SHEET \_\_\_\_\_ OF \_\_\_\_\_

County HENRY S.R. 109

Date MARCH 10, 83

Township MARION

Weather P. CLEAR

Section 34

Temp. +35°

T3N, R7E

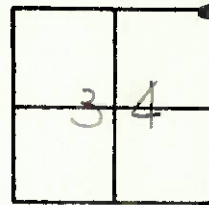
Personnel HOFFMANN

LOEHRKE

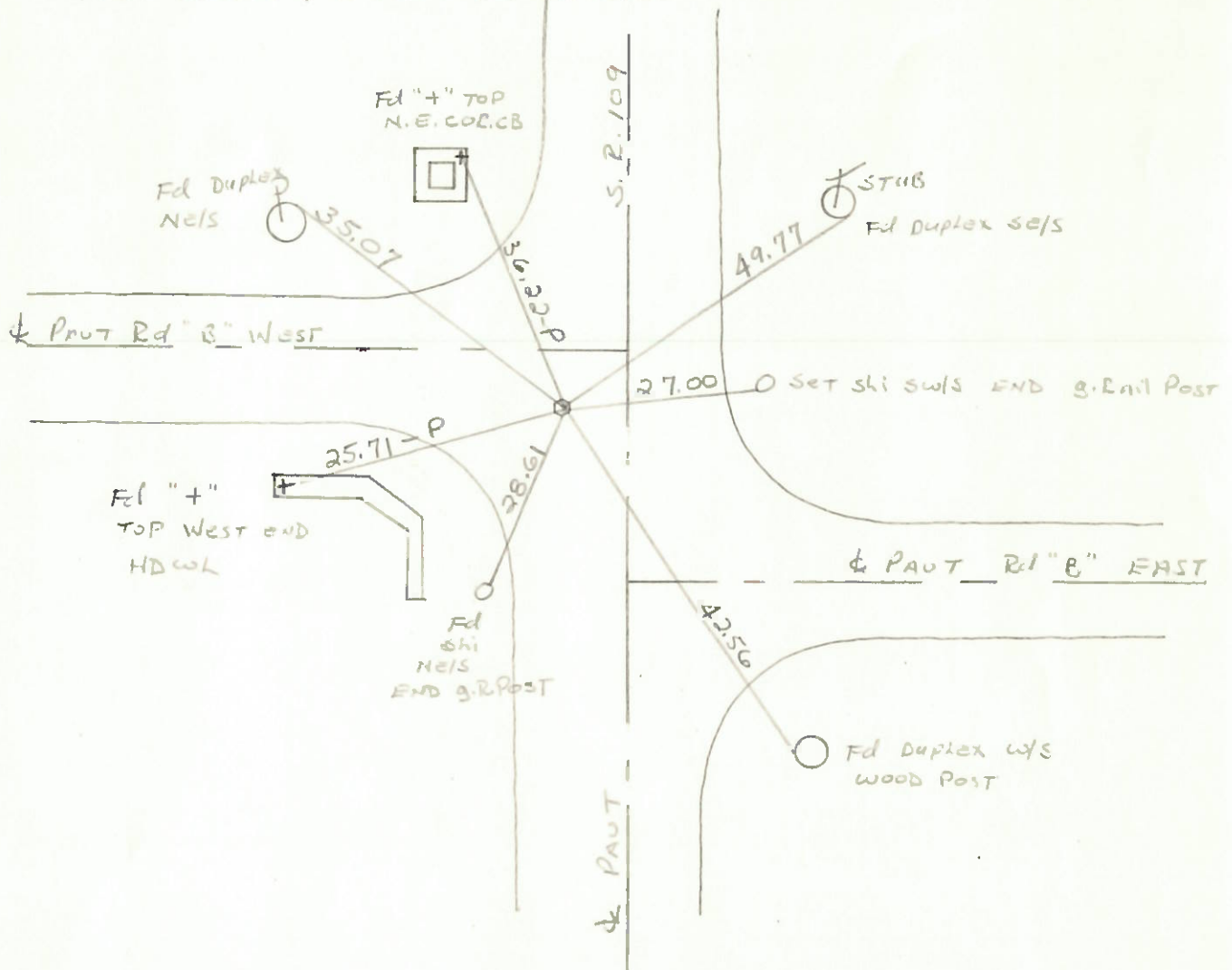
HOUSEHOLDER

BARNHISEL

#3



Fd SMALL R.R. SPK @ SURFACE  
 4.8' LT. & PAUT S.R. 109  
 5.4' SOUTH of & PAUT Rd "B" WEST  
 7.0' NORTH of & PAUT Rd "B" EAST



Q.D.O.T. DISTRICT 2 SURVEY OFFICE

Sht. 2 of 8

County HENRY S.R. 109

Township MARION

Section NE COR. SEC. 34

T3N, R7E

Personnel BURNSIDE

SMITH

BOWERS

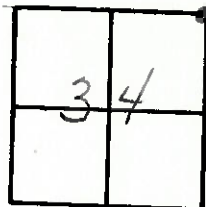
KNAPE

MEAD

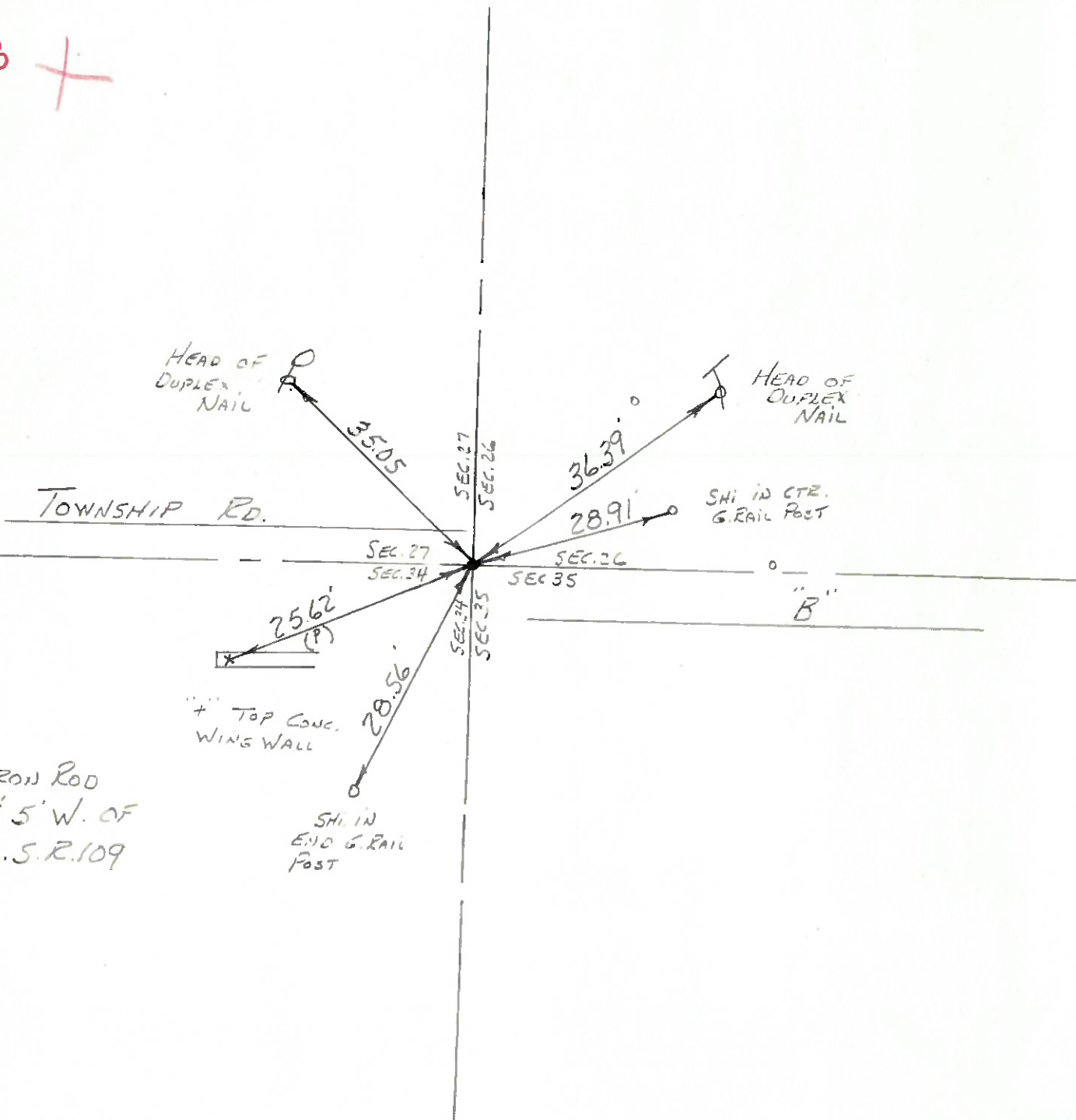
Date 5-21-79

Weather CLEAR

Temp. +62°



3 +



FD. 1/2" IRON ROD  
1" DEEP & 5' W. OF  
CTR. PAVE. S.R. 109