

O.D.O.T. DISTRICT 2 SURVEY OFFICE (USE ONLY)

PERSONNEL

REFERENCE NO. 4

SHEET 5 OF 25

NOTES AUBLE  
H.C. NIESE  
R.C. O'DONNELL

DATE 5/18/21  
WEATHER SUNNY  
TEMP. 75°

ROUTE SR 109  
COUNTY HENRY  
TOWNSHIP MARION  
SECTION 27

DWG BY NIESE PID PAVETRAIN

T 3 N R 7 E

TYPE MONUMENT P.K./WASHER

ON SURFACE - ~~BELOW~~ ON

OFFSET  $\odot$  PAVEMENT 3.0' LT : ~~RT~~

7.0' TO LT EDGE PAVEMENT

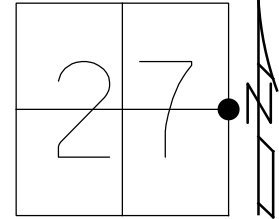
STATION: 79+46

HORZ.DATUM: NAD83(2011)

GEOID: NAVD88(2012A)

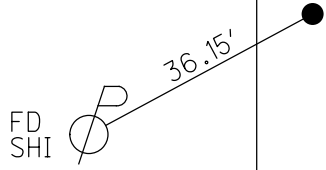
GRID: NORTHING: 558235.165

EASTING: 1545861.223



RECORD:  
SET P.K./WASHER  
9/23/98, MRC  
FD P.K./WASHER  
5/19/08, MC  
FD P.K./WASHER  
REF4  
6/17/16, JFO  
5/18/21, JFO  
9/3/21, TDN  
1/11/23, JMR

$\odot$  SR 109



O.D.O.T. DISTRICT 2 SURVEY OFFICE (USE ONLY)

PERSONNEL

REFERENCE NO. 4

SHEET 5 OF 25

NOTES AUBLE

DATE 5/18/21

ROUTE SR 109

H.C. NIESE

WEATHER SUNNY

COUNTY HENRY

R.C. O'DONNELL

TEMP. 75°

TOWNSHIP MARION

SECTION 27

DWG BY NIESE

PID PAVETRAIN

T 3 N R 7 E

TYPE MONUMENT P.K./WASHER

ON SURFACE - ~~BELOW~~ ON

OFFSET 3.0' LT : ~~RT~~

7.0' TO LT EDGE PAVEMENT

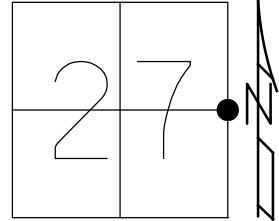
STATION: 79+46

HORZ.DATUM: NAD83(2011)

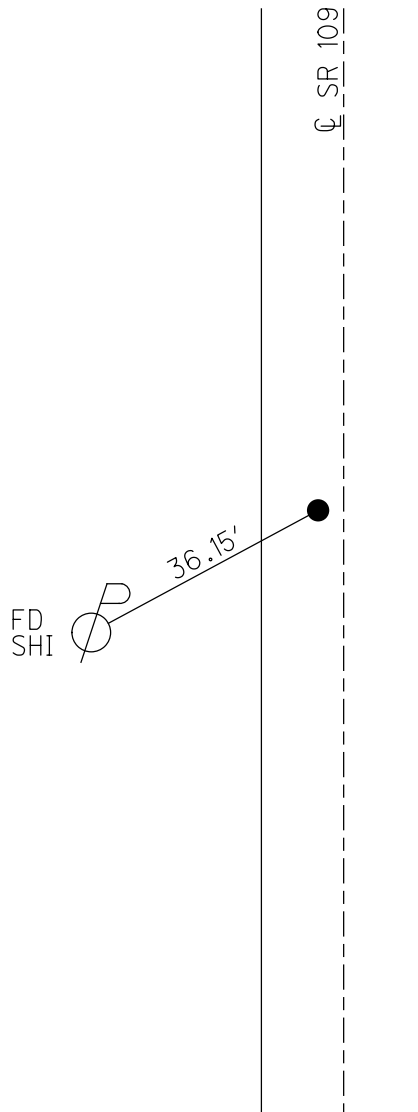
GEOID: NAVD88(2012A)

GRID: NORTHING: 558235.165

EASTING: 1545861.223



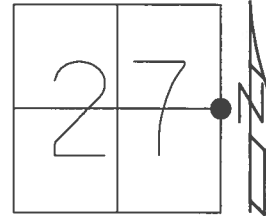
RECORD:  
SET P.K./WASHER  
9/23/98, MRC  
FD P.K./WASHER  
5/19/08, MC  
FD P.K./WASHER  
REF4  
6/17/16, JFO  
5/18/21, JFO  
9/3/21, TDN



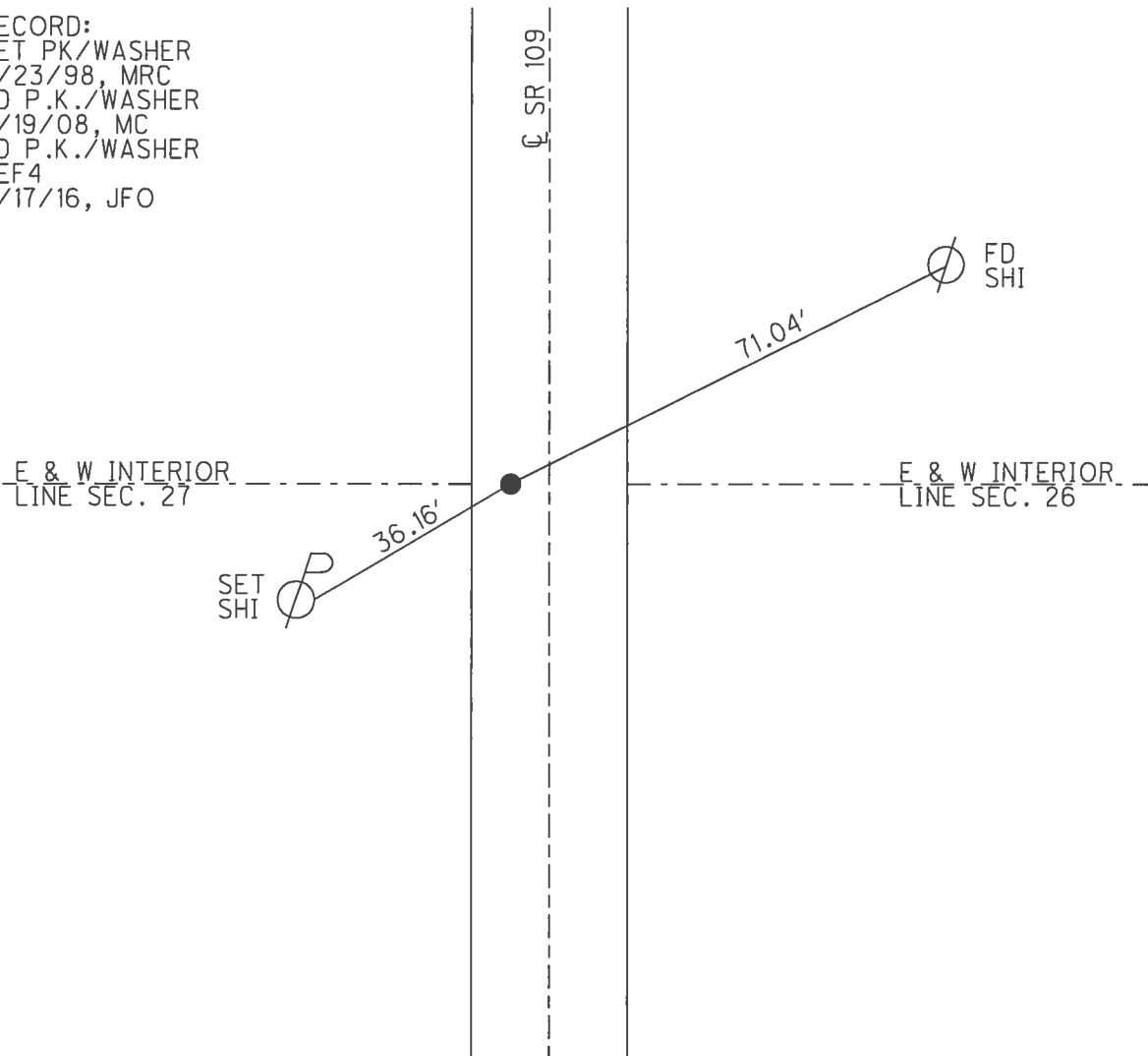
O.D.O.T. DISTRICT 2 SURVEY OFFICE (USE ONLY)

PERSONNEL \_\_\_\_\_ REFERENCE NO. 4 SHEET 5 OF 26  
 NOTES HUSS DATE 5/19/08 ROUTE SR 109  
 H.C. CANTERBURY WEATHER SUNNY COUNTY HENRY  
 R.C. HUSS TEMP. 57° TOWNSHIP MARION  
 \_\_\_\_\_ SECTION 27  
 \_\_\_\_\_ T 3 N R 7 E

TYPE MONUMENT P.K./WASHER  
 ON SURFACE - ~~BELOW~~ ON \_\_\_\_\_  
 LEFT - ☉ PAV'T - ~~RIGHT~~ 3'  
7' TO LT EDGE PAVEMENT  
 S.L.M. 79+46  
 Grid: Northing: 558235.165 Easting: 1545861.223



RECORD:  
 SET PK/WASHER  
 9/23/98, MRC  
 FD P.K./WASHER  
 5/19/08, MC  
 FD P.K./WASHER  
 REF4  
 6/17/16, JFO



O.D.O.T. DISTRICT 2 SURVEY OFFICE

PERSONNEL

REFERENCE NO. 4 SHEET 4 OF 21

NOTES Canterbury

H.C. Canterbury

R.C. Rousas

DATE 5-7-98

WEATHER OVERCAST

TEMP. 65°

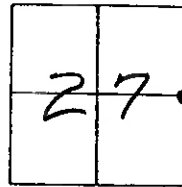
ROUTE 109

COUNTY HENRY

TOWNSHIP MARION

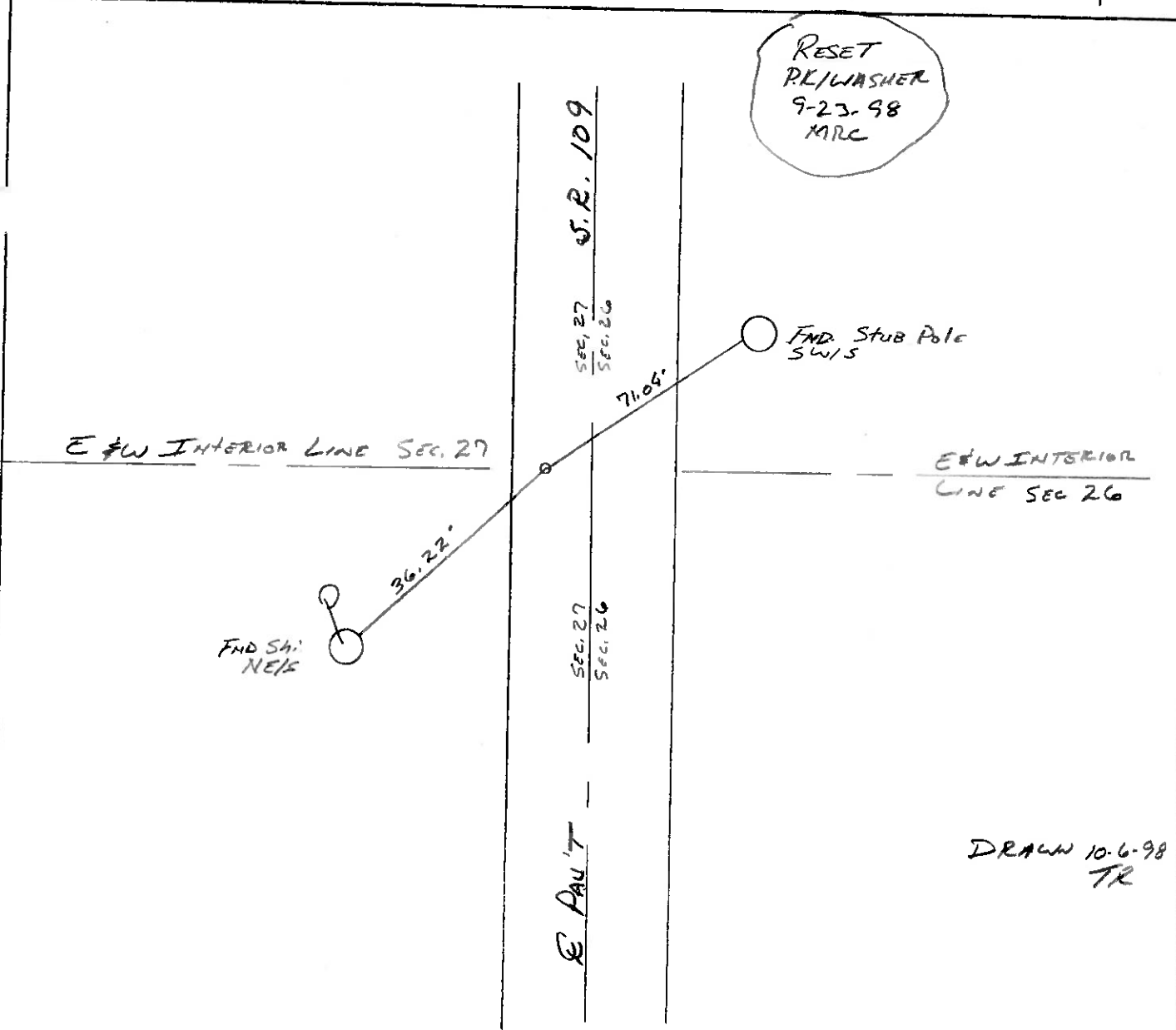
SECTION 27

T 3 N R 7 E



TYPE MONUMENT SM. RL SPIKE  
 ON SURFACE BELOW SURFACE  
 LEFT-C PAV'T. - RIGHT 3.2'  
6.2' TO LT EDGE PAVEMENT  
 S.L.M. 2+431.49 SLK (79+46)

RESET  
 RL/WASHER  
 9-23-98  
 MRC



DRAWN 10-6-98  
 TR

# O.D.O.T. DISTRICT 2 SURVEY OFFICE

PERSONNEL

REFERENCE NO. 4

SHEET 4 OF       

NOTES BARNHISEL

H.C. " " "

R.C. HOFFMAN

DATE 3-29-89

WEATHER cloudy

TEMP. +44°

ROUTE 109

COUNTY HENRY

TOWNSHIP Marion

SECTION 27

T 3 N R 7 E

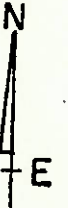
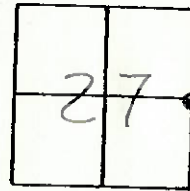
TYPE MONUMENT Sm. R.R. Spt.

ON SURFACE - BELOW YES

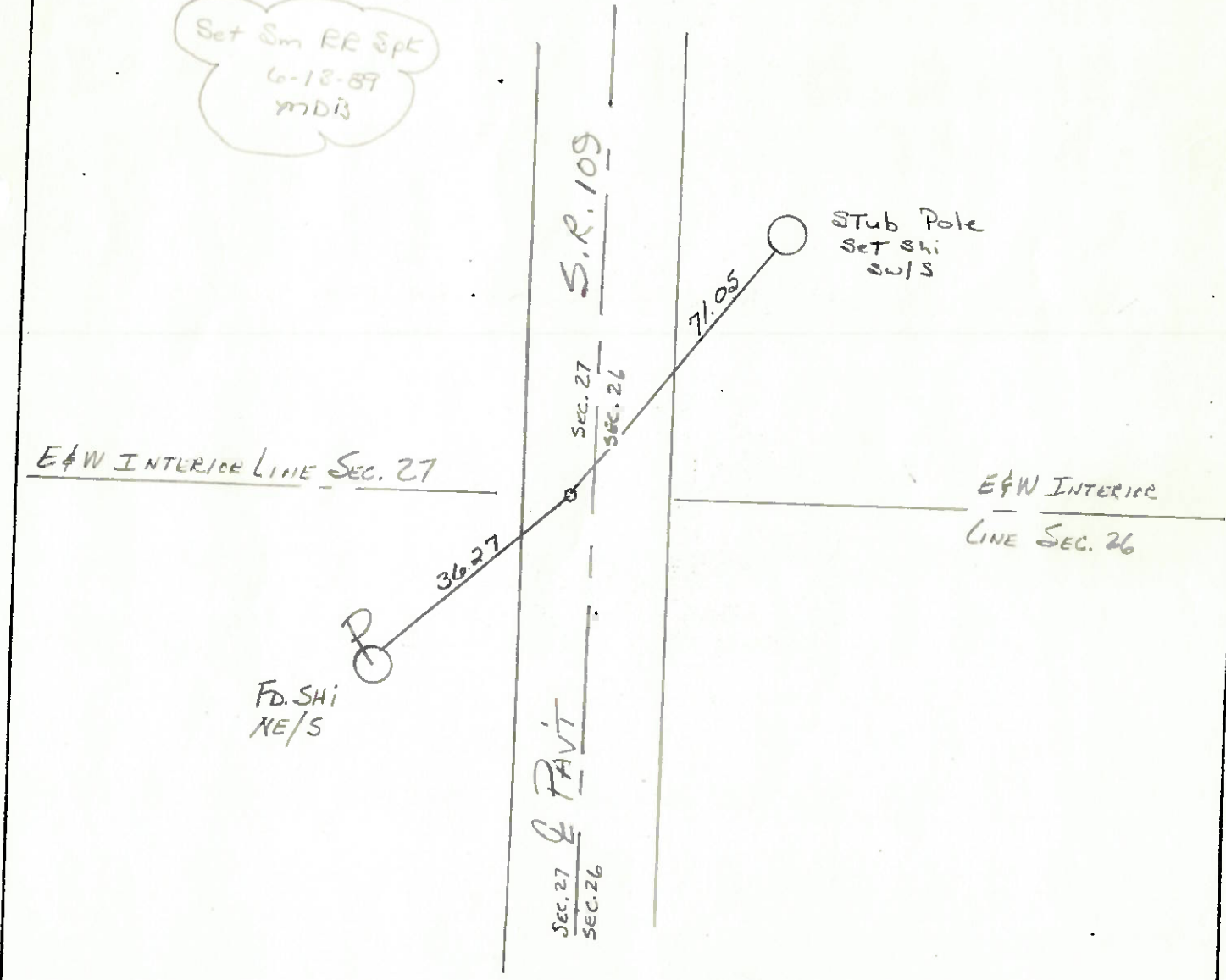
LEFT-☉ PAV'T. - RIGHT 2.7

6.6 TO LT. EDGE PAVEMENT

S.L.M. 79+46



Set Sm RR Spt  
 6-18-89  
 y7D13



QD.O.T. DISTRICT 2 SURVEY OFFICE

Sht. 3 of 8

County HENRY S.R. 109

Date 5-21-79

Township MARION

Weather CLEAR

Section E 1/4 Post SEC 27

Temp. +63°

T3N, R7E

Personnel BURNSIDE

SMITH

BOWERS

KNAPP

MEAD

