

O.D.O.T. DISTRICT 2 SURVEY OFFICE (USE ONLY)

PERSONNEL

REFERENCE NO. 5

SHEET 6 OF 25

NOTES AUBLE DATE 5/18/21  
 H.C. NIESE WEATHER SUNNY  
 R.C. O'DONNELL TEMP. 75°

ROUTE SR 109  
 COUNTY HENRY  
 TOWNSHIP MARION  
 SECTION 27  
 T 3 N R 7 E

DWG BY NIESE PID PAVETRAIN

TYPE MONUMENT P.K./WASHER

ON SURFACE - ~~BELOW~~ ON

OFFSET  $\varnothing$  PAVEMENT 4.3' LT : ~~RT~~  
5.5' TO LT EDGE PAVEMENT 4.0' S. OF  $\varnothing$  E

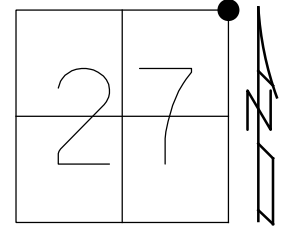
STATION: 105+92

HORZ.DATUM: NAD83(2011)

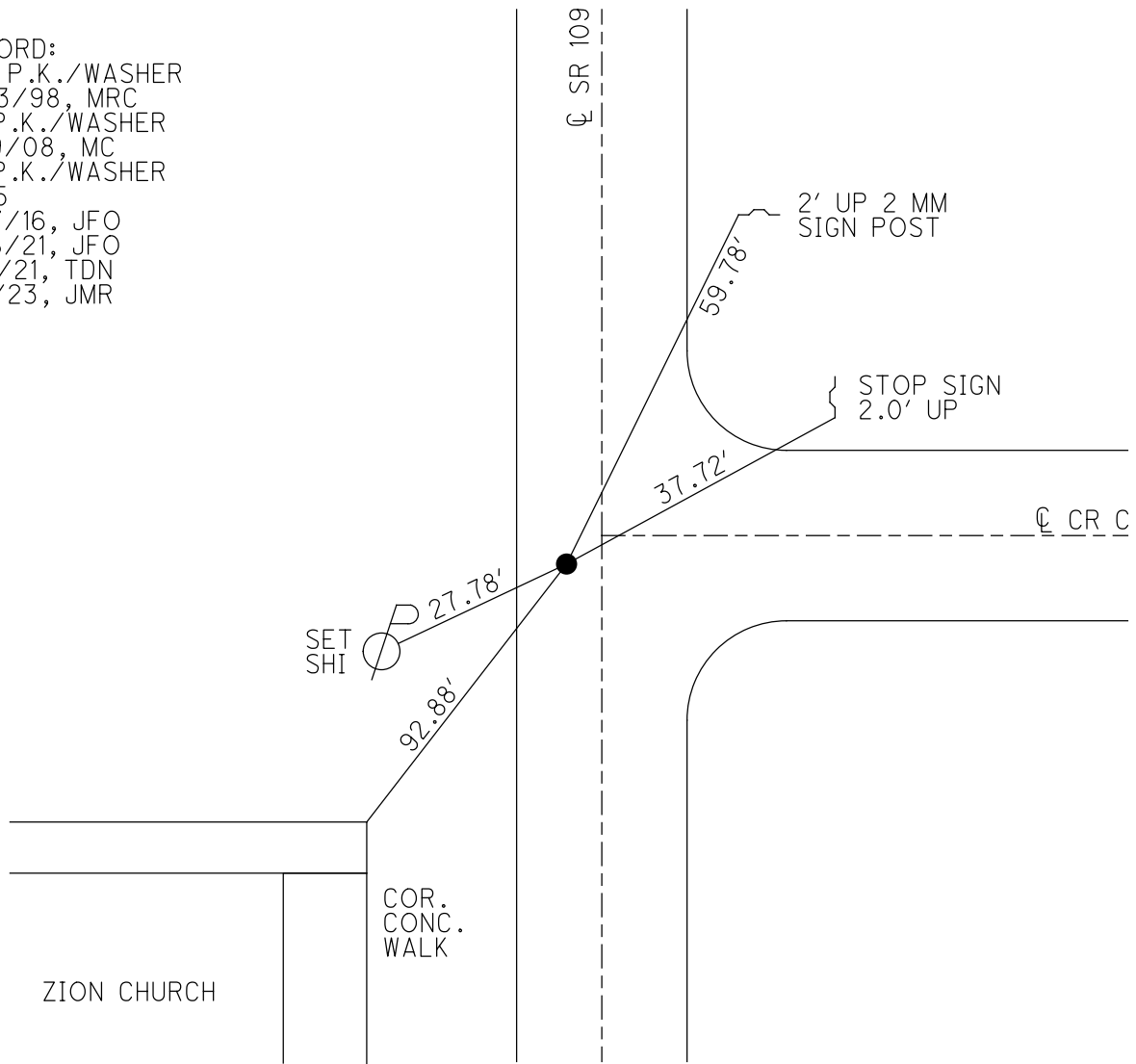
GEOID: NAVD88(2012A)

GRID: NORTHING: 560879.830

EASTING: 1545899.735



RECORD:  
 SET P.K./WASHER  
 9/23/98, MRC  
 FD P.K./WASHER  
 5/19/08, MC  
 FD P.K./WASHER  
 REF5  
 6/17/16, JFO  
 5/18/21, JFO  
 9/3/21, TDN  
 1/11/23, JMR



O.D.O.T. DISTRICT 2 SURVEY OFFICE (USE ONLY)

PERSONNEL

REFERENCE NO. 5

SHEET 6 OF 25

NOTES AUBLE

DATE 5/18/21

ROUTE SR 109

H.C. NIESE

WEATHER SUNNY

COUNTY HENRY

R.C. O'DONNELL

TEMP. 75°

TOWNSHIP MARION

SECTION 27

DWG BY NIESE

PID PAVETRAIN

T 3 N R 7 E

TYPE MONUMENT P.K./WASHER

ON SURFACE - ~~BELOW~~ ON

OFFSET  $\odot$  PAVEMENT 4.3' LT : ~~RT~~

5.5' TO LT EDGE PAVEMENT 4.0' S. OF  $\odot$  E

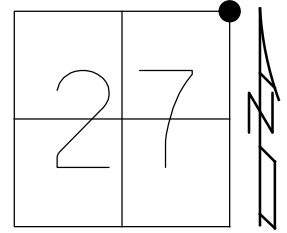
STATION: 105+92

HORZ.DATUM: NAD83(2011)

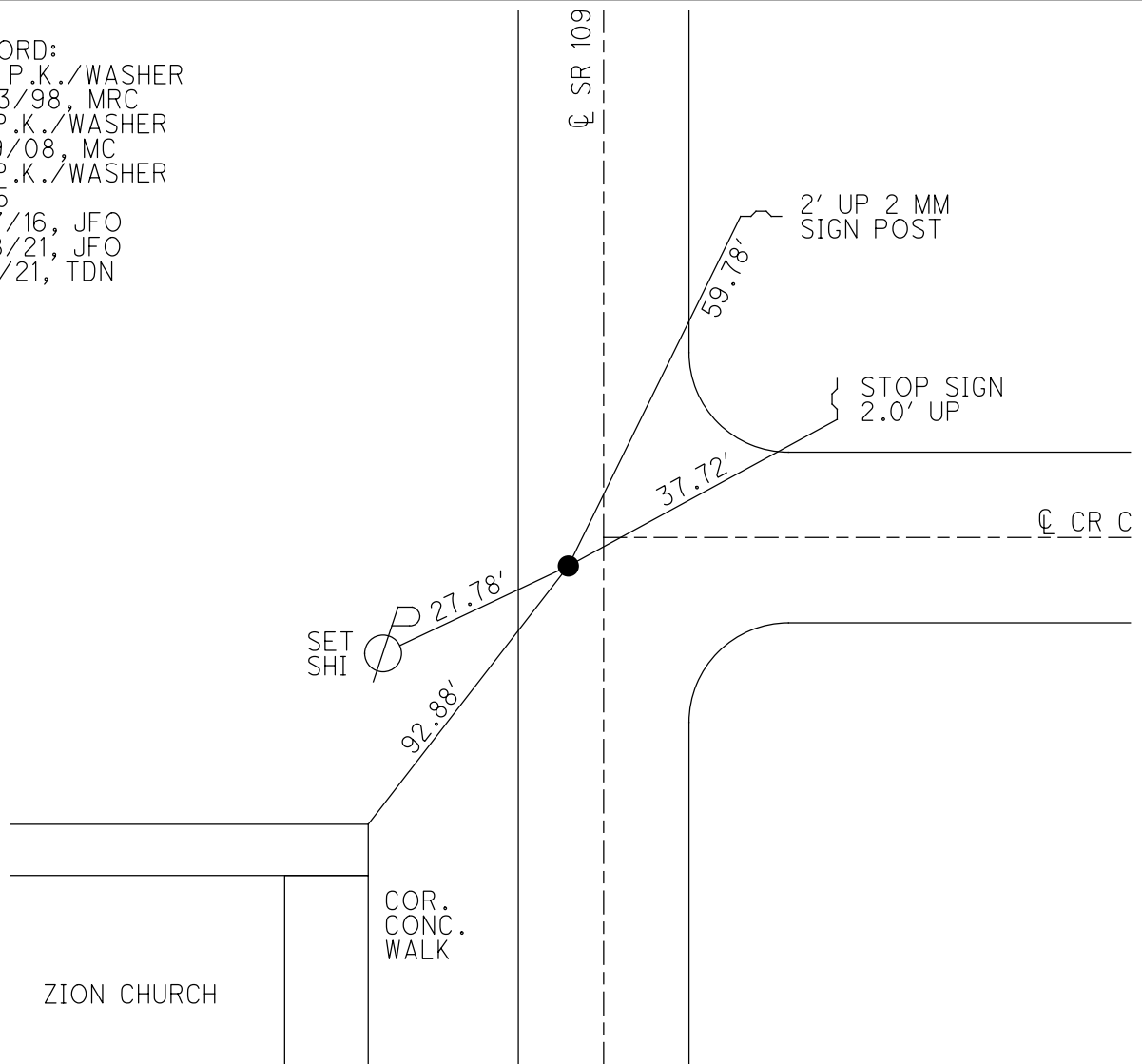
GEOID: NAVD88(2012A)

GRID: NORTHING: 560879.830

EASTING: 1545899.735



RECORD:  
 SET P.K./WASHER  
 9/23/98, MRC  
 FD P.K./WASHER  
 5/19/08, MC  
 FD P.K./WASHER  
 REF5  
 6/17/16, JFO  
 5/18/21, JFO  
 9/3/21, TDN



O.D.O.T. DISTRICT 2 SURVEY OFFICE (USE ONLY)

PERSONNEL \_\_\_\_\_ REFERENCE NO. 5 SHEET 6 OF 26  
 NOTES HUSS DATE 5/19/08 ROUTE SR 109  
 H.C. CANTERBURY WEATHER SUNNY COUNTY HENRY  
 R.C. HUSS TEMP. 57° TOWNSHIP MARION  
 \_\_\_\_\_ SECTION 27  
 \_\_\_\_\_ T 3 N R 7 E

TYPE MONUMENT PK & WASHER

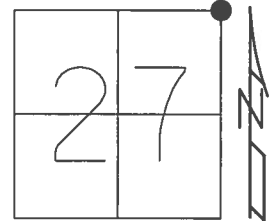
ON SURFACE - ~~BELOW~~ ON \_\_\_\_\_

LEFT - ☉ PAV'T - ~~RIGHT~~ 4.3', 4' S OF ☉ E

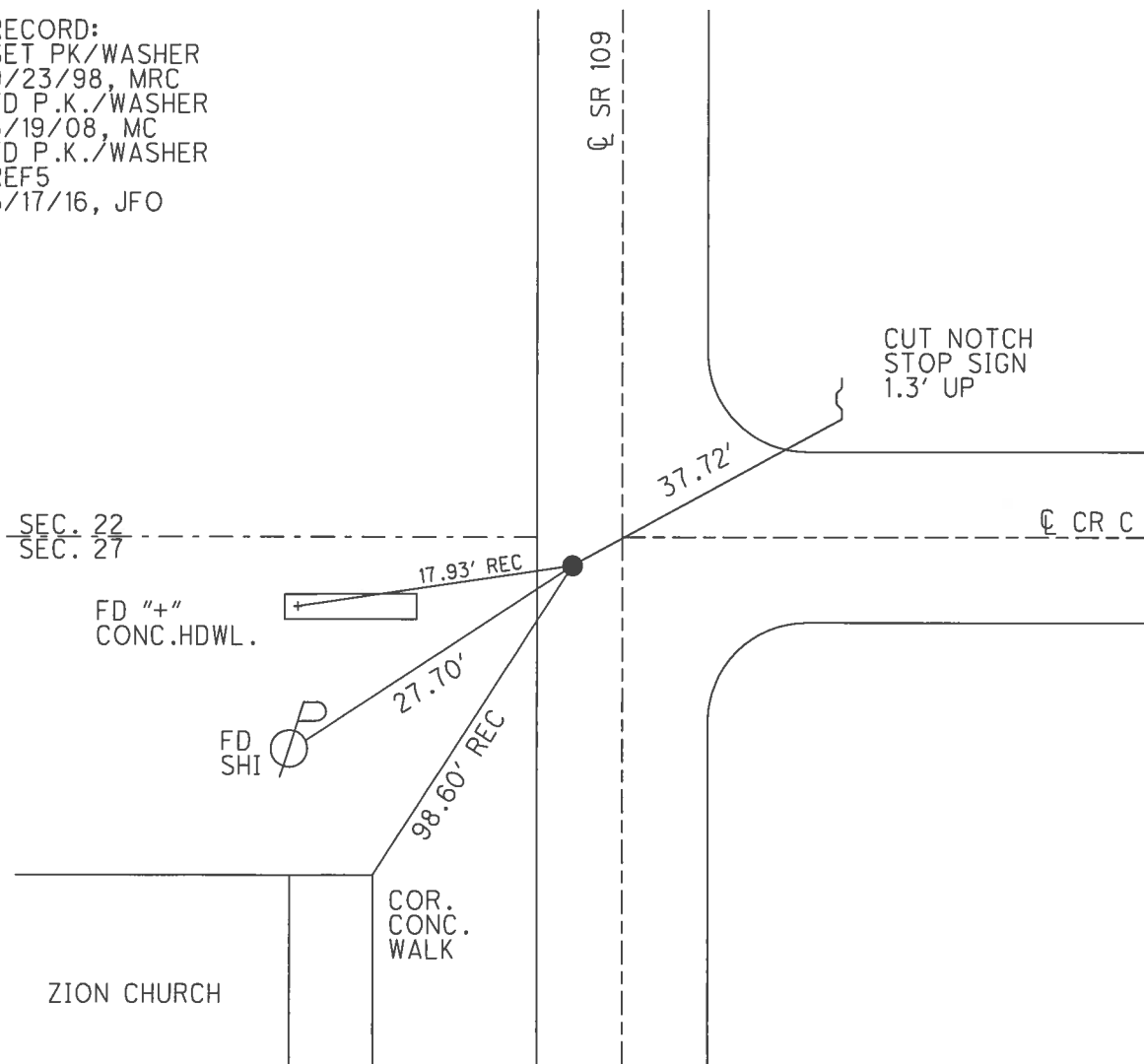
5.5' TO LT EDGE PAVEMENT

S.L.M. 105+92

Grid: Northing: 560879.830 Easting: 1545899.735



RECORD:  
 SET PK/WASHER  
 9/23/98, MRC  
 FD P.K./WASHER  
 5/19/08, MC  
 FD P.K./WASHER  
 REF5  
 6/17/16, JFO



# O.D.O.T. DISTRICT 2 SURVEY OFFICE

PERSONNEL \_\_\_\_\_

REFERENCE NO. 5

SHEET 5 OF 21

NOTES Canterbury

H.C. Canterbury

R.C. Rousos

DATE 5-7-98

WEATHER OVERCAST

TEMP. 65°

ROUTE 109

COUNTY HENRY

TOWNSHIP MARION

SECTION 27

T 3 N R 7 E

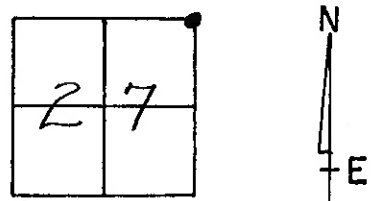
TYPE MONUMENT P.K. NAIL

ON SURFACE ~~BELOW~~ SURFACE

LEFT-C PAU'T. - RIGHT 4.7' Lt.

4.8' TO Lt. EDGE PAVEMENT 4.0'S of E Co. Rd. 'C'

S.L.M. 3+241.16 SHK (105+92)



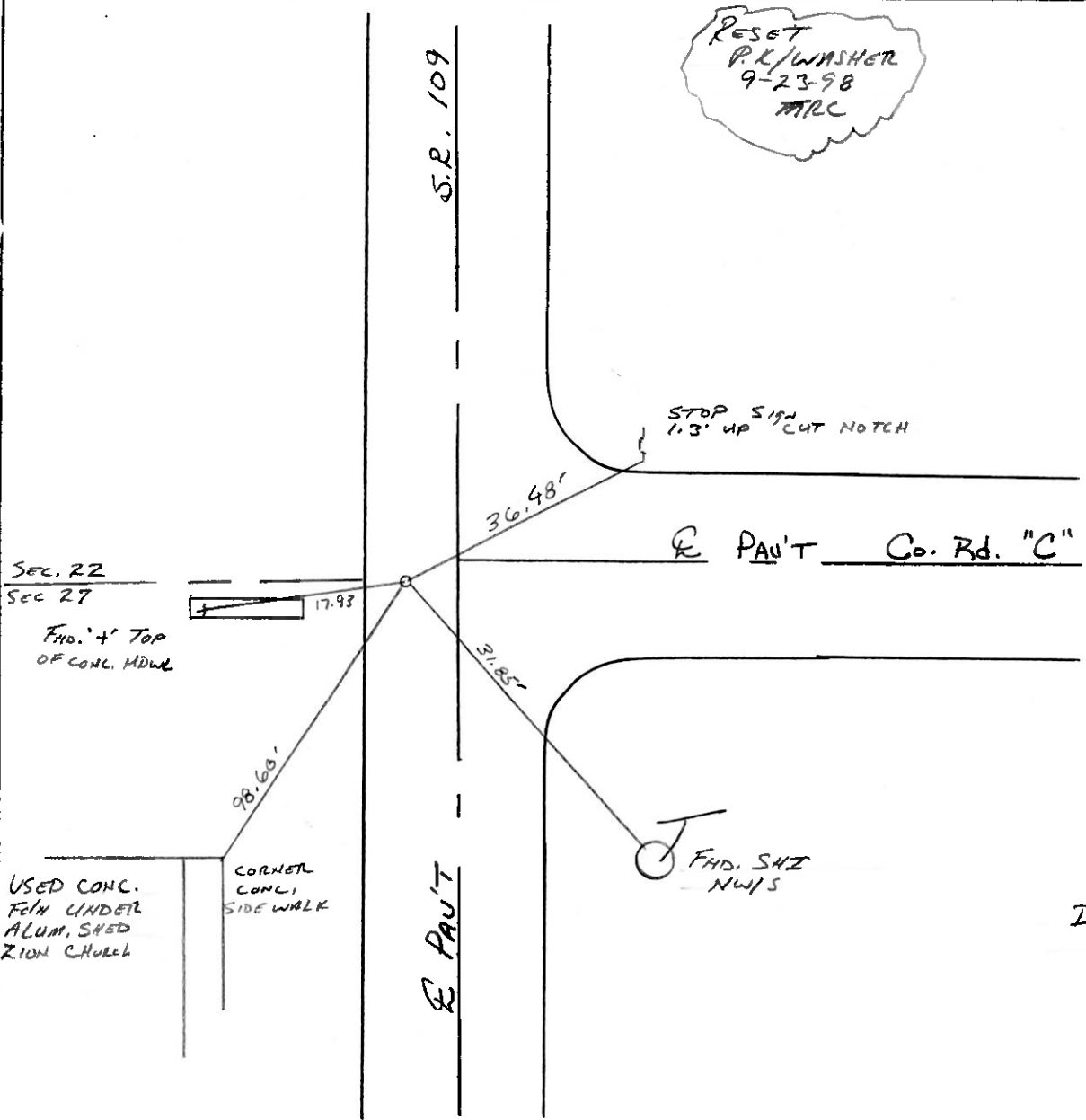
RESET  
 P.K./WASHER  
 9-23-98  
 MRC

STOP SIGN CUT NOTCH  
 1.3' UP

E PAU'T Co. Rd. "C"

FHD. SHZ  
 - NW15

DRAWN 10-6-98  
 TR



SEC. 22  
 Sec 27  
 FHD. 4' TOP  
 OF CONCL. MDWD

USED CONCL.  
 FHD. UNDER  
 ALUM. SHED  
 ZION CHURCH

CORNER  
 CONCL.  
 SIDE WALK

# O.D.O.T. DISTRICT 2 SURVEY OFFICE

PERSONNEL

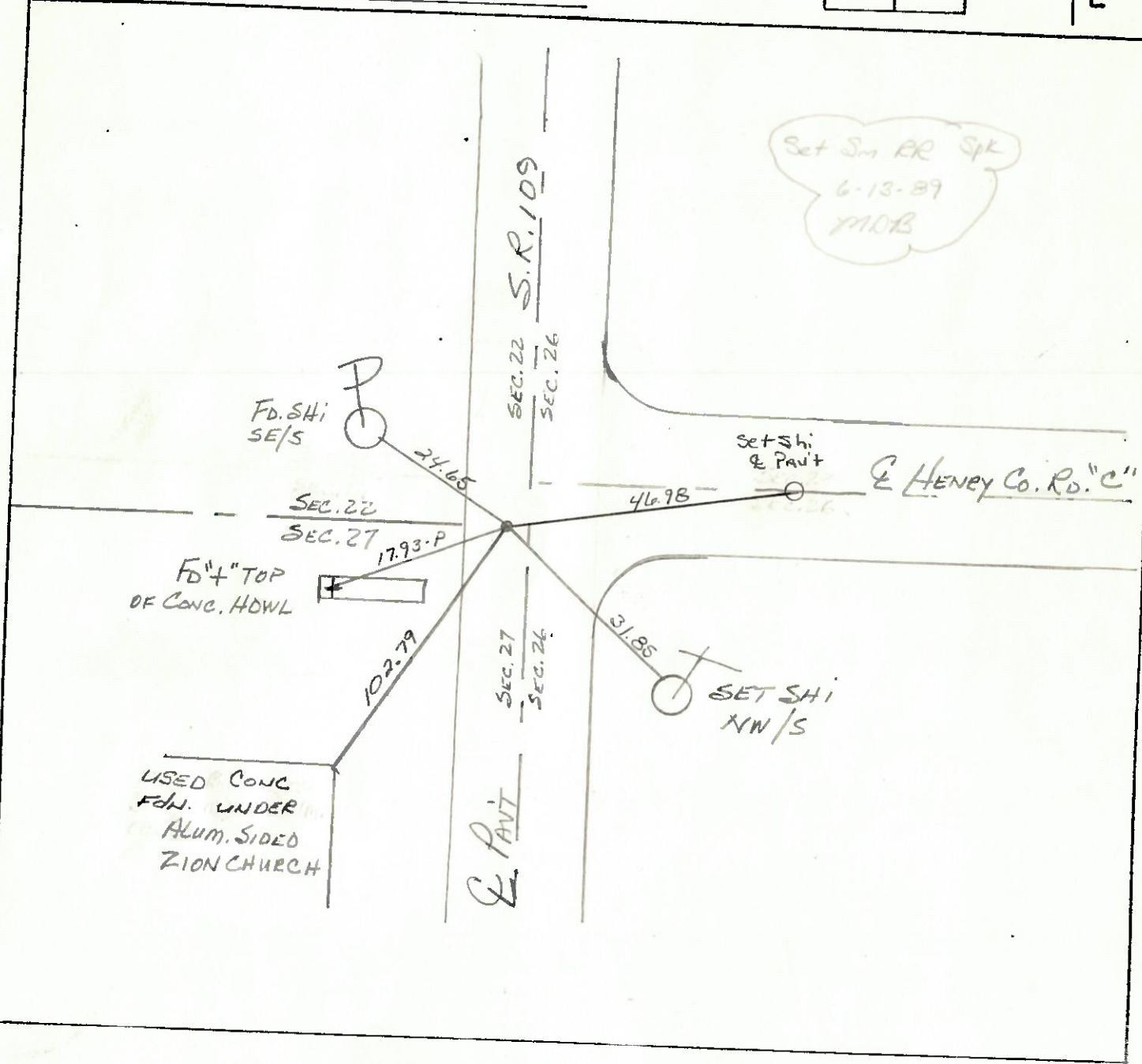
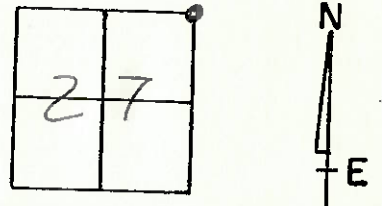
NOTES BARNHISEL  
 H.C. \_\_\_\_\_  
 R.C. HOFFMAN

REFERENCE NO. 5  
 DATE 3-29-89  
 WEATHER cloudy  
 TEMP. +44°

SHEET 5 OF \_\_\_\_\_  
 ROUTE 109  
 COUNTY HENRY  
 TOWNSHIP MARION  
 SECTION 27  
T3 N R 7 E

TYPE MONUMENT P.K. NAIL  
 ON SURFACE - BELOW \_\_\_\_\_  
 LEFT - ¢ PAV'T. - RIGHT 4.6  
4.9 TO LT. EDGE PAVEMENT  
 S.L.M. 105+92

4.0'S. of ¢ ON Co. Rd. "C" EAST.



County HENRY S.R. 109

Date 5-21-79

Township MARION

Weather CLEAR

Section N.E. COR. SEC. 27

Temp. +63°

T3N, R7E

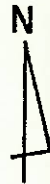
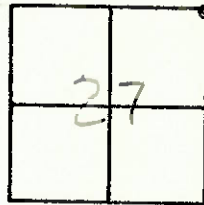
Personnel BURNSIDE

SMITH

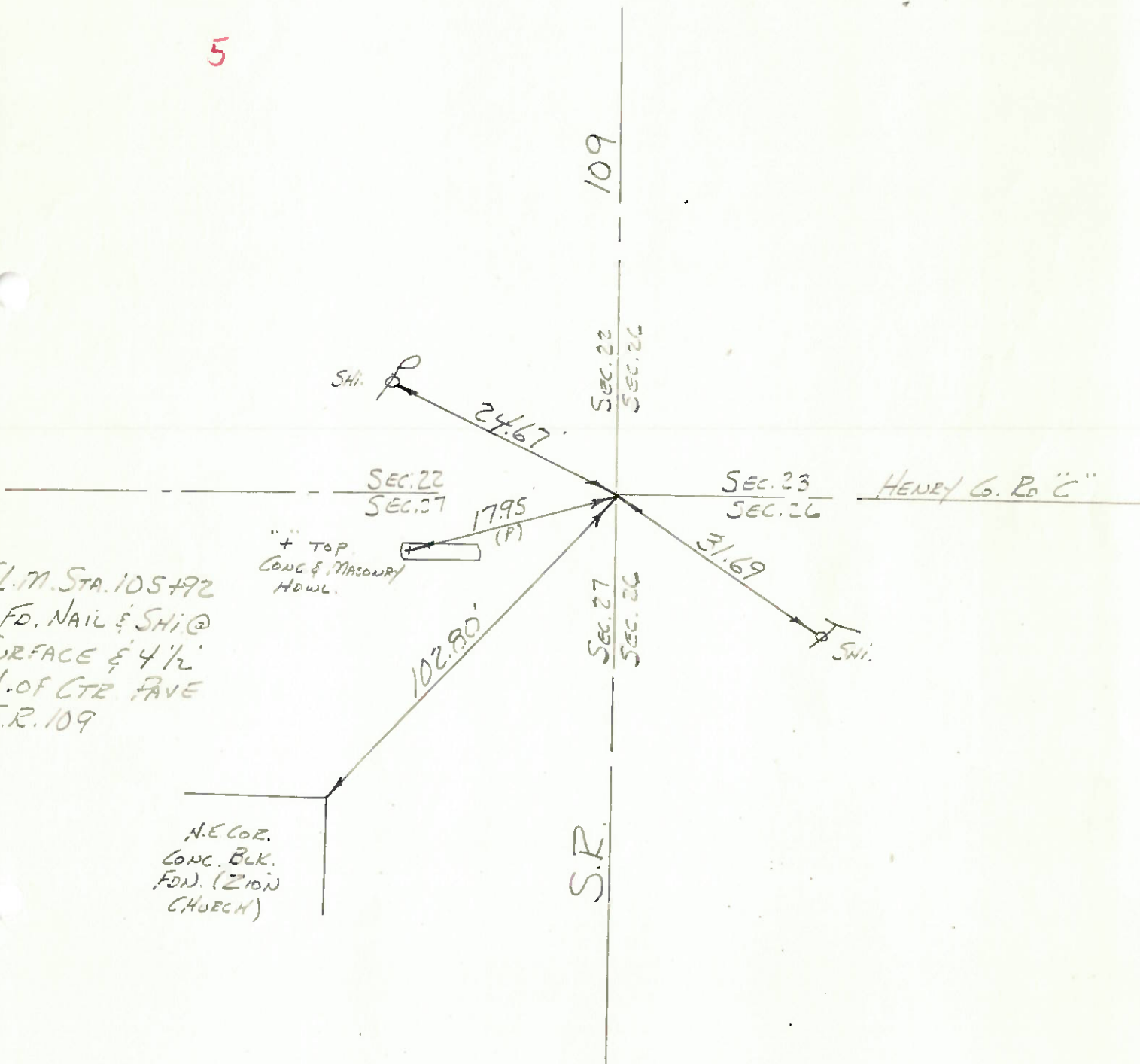
BOWERS

KNAPE

MEAD



5



S.L.M. STA. 105+92  
FD. NAIL & SHI @  
SURFACE & 4 1/2'  
W. OF CTR. AVE  
S.R. 109

N.E. COR.  
CONC. BLK.  
FDN. (ZION  
CHURCH)