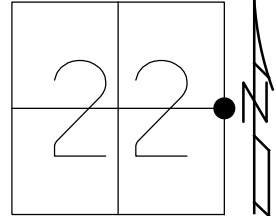


O.D.O.T. DISTRICT 2 SURVEY OFFICE (USE ONLY)

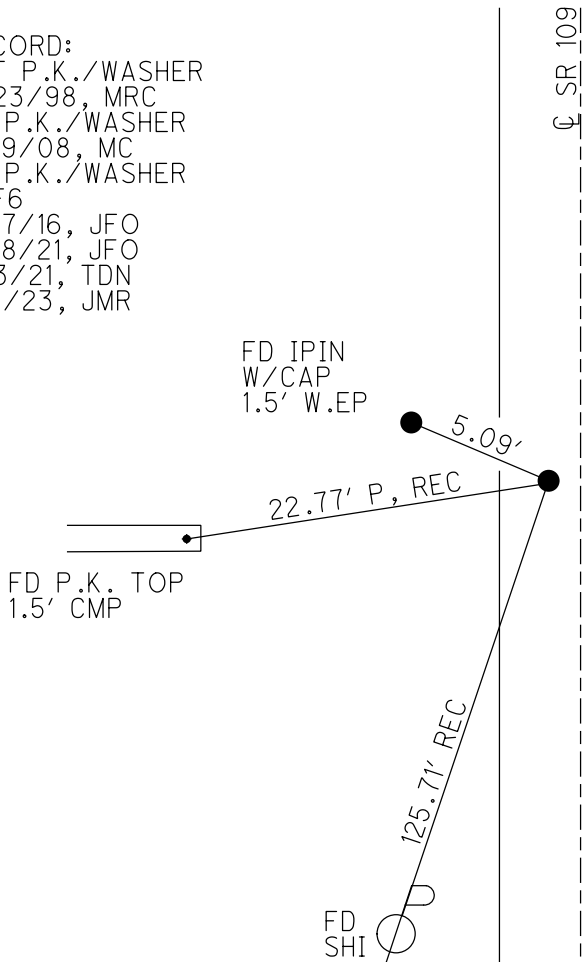
PERSONNEL _____ REFERENCE NO. 6 SHEET 7 OF 25
 NOTES AUBLE DATE 5/18/21 ROUTE SR 109
 H.C. NIESE WEATHER SUNNY COUNTY HENRY
 R.C. O'DONNELL TEMP. 74° TOWNSHIP MARION
 SECTION 22
 DWG BY NIESE PID PAVETRAIN T 3 N R 7 E

TYPE MONUMENT P.K./WASHER
 ON SURFACE - ~~BELOW~~ ON
 OFFSET 8.4' LT : ~~RT~~
1.6' TO LT EDGE PAVEMENT
 STATION: 132+44



HORZ. DATUM: NAD83(2011) GEOID: NAVD88(2012A)
 GRID: NORTHING: 563531.520 EASTING: 1545916.706

RECORD:
 SET P.K./WASHER
 9/23/98, MRC
 FD P.K./WASHER
 5/19/08, MC
 FD P.K./WASHER
 REF6
 6/17/16, JFO
 5/18/21, JFO
 9/3/21, TDN
 1/11/23, JMR



O.D.O.T. DISTRICT 2 SURVEY OFFICE (USE ONLY)

PERSONNEL

REFERENCE NO. 6

SHEET 7 OF 25

NOTES AUBLE

DATE 5/18/21

ROUTE SR 109

H.C. NIESE

WEATHER SUNNY

COUNTY HENRY

R.C. O'DONNELL

TEMP. 74°

TOWNSHIP MARION

SECTION 22

DWG BY NIESE

PID PAVETRAIN

T 3 N R 7 E

TYPE MONUMENT P.K./WASHER

ON SURFACE - ~~BELOW~~ ON

OFFSET 1.6' \perp PAVEMENT 8.4' LT : ~~RT~~

1.6' TO LT EDGE PAVEMENT

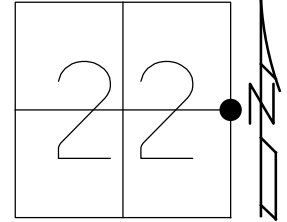
STATION: 132+44

HORZ. DATUM: NAD83(2011)

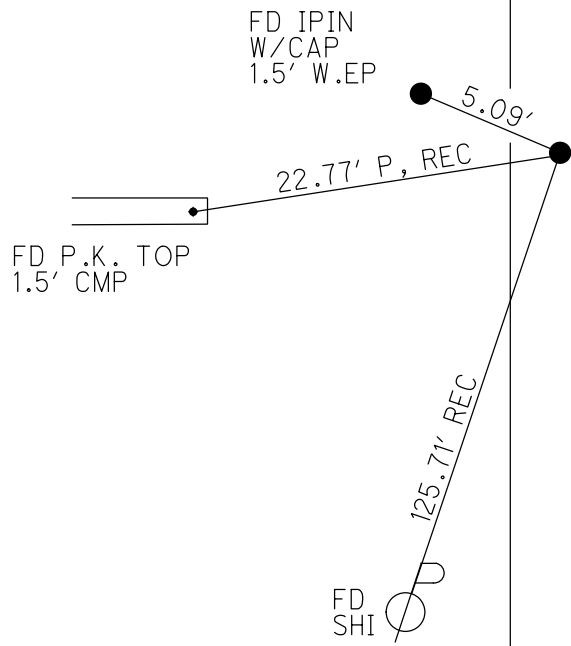
GEOID: NAVD88(2012A)

GRID: NORTHING: 563531.520

EASTING: 1545916.706



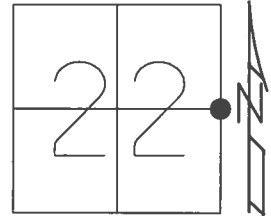
RECORD:
 SET P.K./WASHER
 9/23/98, MRC
 FD P.K./WASHER
 5/19/08, MC
 FD P.K./WASHER
 REF6
 6/17/16, JFO
 5/18/21, JFO
 9/3/21, TDN



O.D.O.T. DISTRICT 2 SURVEY OFFICE (USE ONLY)

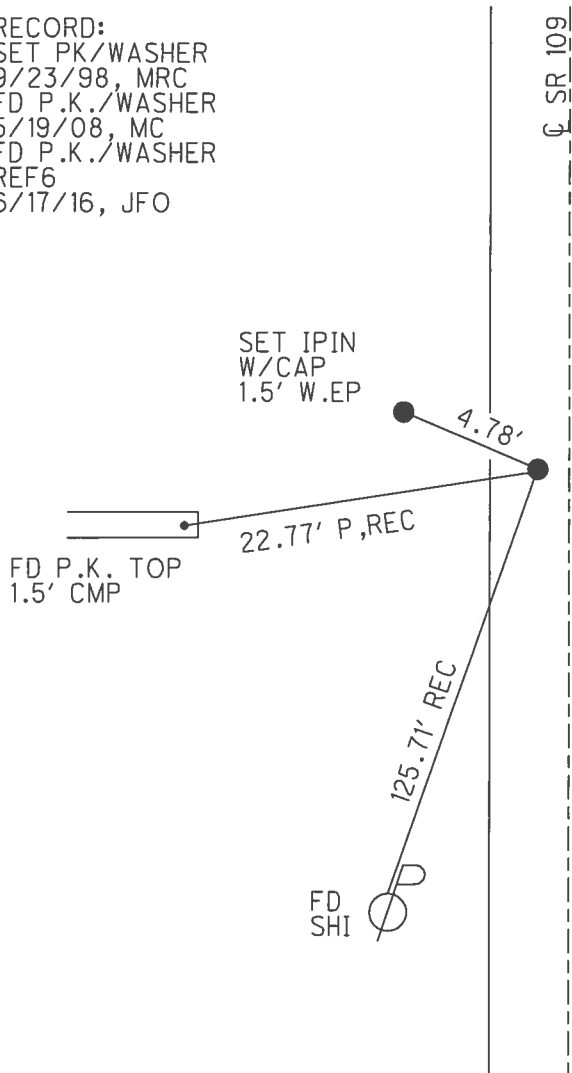
PERSONNEL _____ REFERENCE NO. 6 SHEET 7 OF 26
 NOTES HUSS DATE 5/19/08 ROUTE SR 109
 H.C. CANTERBURY WEATHER SUNNY COUNTY HENRY
 R.C. HUSS TEMP. 57° TOWNSHIP MARION
 _____ SECTION 22
 _____ T N R E

TYPE MONUMENT P.K./WASHER
 ON SURFACE - ~~BELOW~~ ON
 LEFT - ☉ PAV'T - ~~RIGHT~~ 8.4'
1.6' TO LT EDGE PAVEMENT
 S.L.M. 132+44



Grid: Northing: 563531.520 Easting: 1545916.706

RECORD:
 SET PK/WASHER
 9/23/98, MRC
 FD P.K./WASHER
 5/19/08, MC
 FD P.K./WASHER
 REF6
 6/17/16, JFO



O.D.O.T. DISTRICT 2 SURVEY OFFICE

PERSONNEL

REFERENCE NO. 6

SHEET 6 OF 21

NOTES Canterbury

H.C. Canterbury

R.C. Rouso

DATE 5-7-98

WEATHER OVERCAST

TEMP. 65°

ROUTE 109

COUNTY HENRY

TOWNSHIP MARION

SECTION 22

T3 N R 7 E

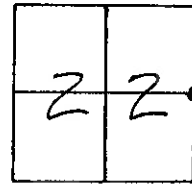
TYPE MONUMENT SM. RR. SPIKE

ON SURFACE - BELOW Surface

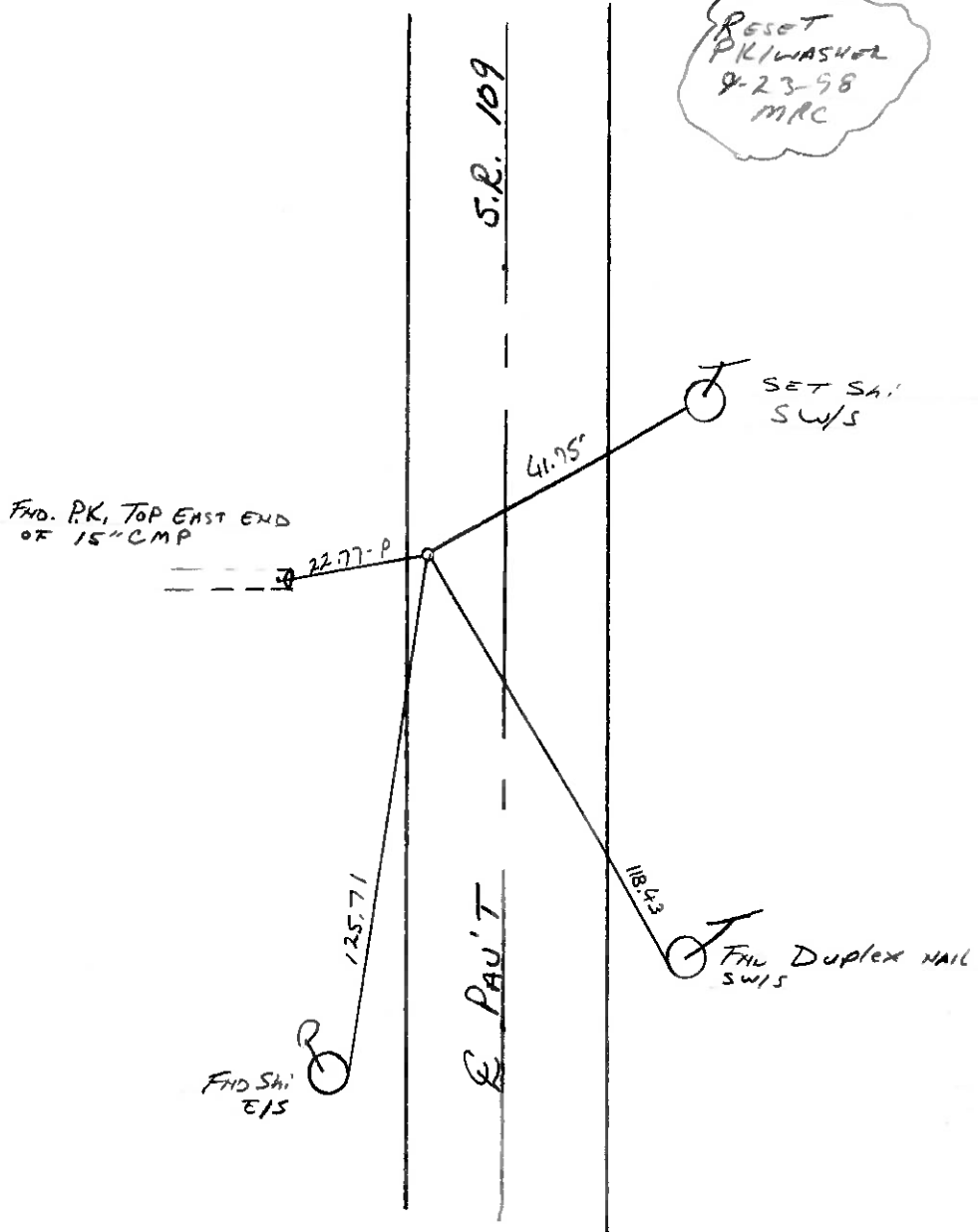
LEFT - 0 PAV'T. - RIGHT 8.5

1.0 TO LT. EDGE PAVEMENT

S.L.M. 4+052.74 SLR (132+44)



RESET
PK WASHED
9-23-98
MRC



DRAWN 10-7-98
TR

O.D.O.T. DISTRICT 2 SURVEY OFFICE

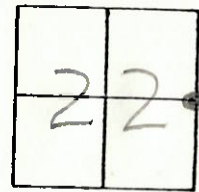
PERSONNEL

NOTES BAENHISEL
 H.C. " "
 R.C. HOFFMAN

REFERENCE NO. 6
 DATE 3-29-89
 WEATHER cloudy - Windy
 TEMP. 44°

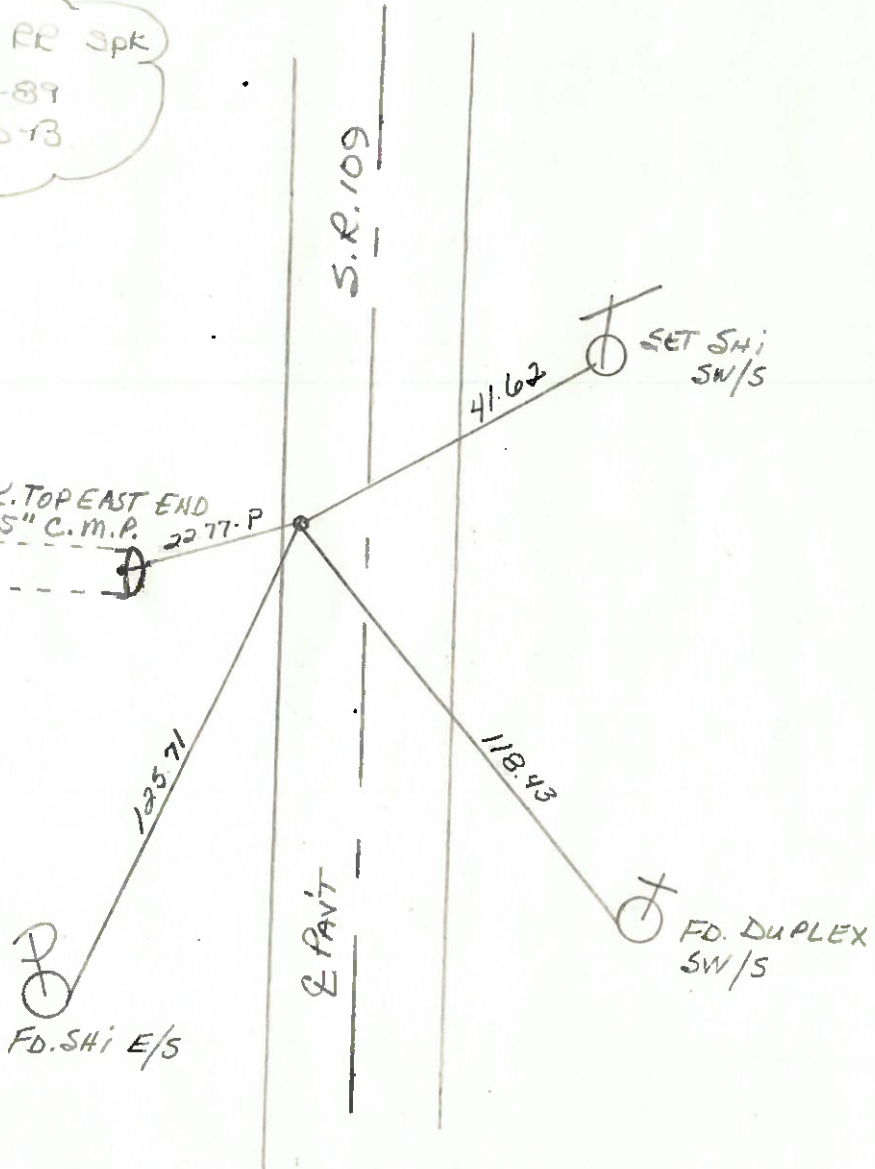
SHEET 6 OF
 ROUTE 109
 COUNTY HENRY
 TOWNSHIP MARION
 SECTION 22
T 3 N R 7 E

TYPE MONUMENT Sm. R. P. Spk.
 ON SURFACE - BELOW
 LEFT - CL PAV'T. - RIGHT 8.2
I.S. TO LT EDGE PAVEMENT
 S.L.M. 132+44



Set Sm RR Spk
 6-13-89
 MD-13

FD. P.K. TO EAST END
 OF 15" C.M.P. 2277. P



Q.D.O.T. DISTRICT 2 SURVEY OFFICE

SHEET _____ OF _____

County HENRY S.R. 109

Date MARCH 10, 83

Township MARION

Weather P. CLEAR

Section 22

Temp. + 35°

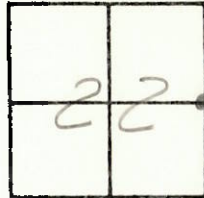
T3N, R7E

Personnel HOFFMAN

LOEHRKE

HOUSEHOLDER

BARNHISEL



#6

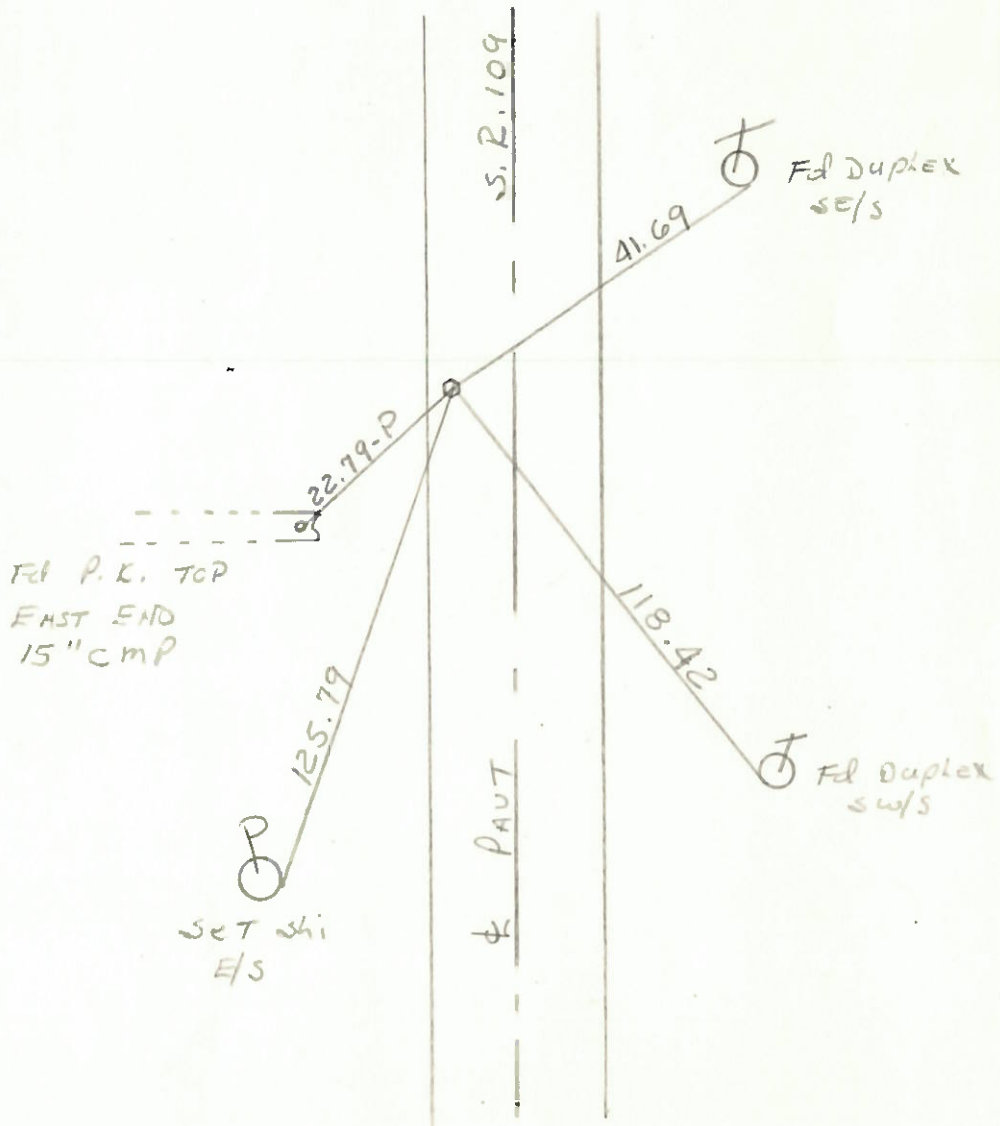
Fd SMALL R.R. SPK @ SURFACE

S.L.M. 132 + 44

8.0' LT. & PAUT S.R. 109

1.2' TO W. EP.

16.9' TO E. EP.



County HENRY SR 109

Date 5-22-79

Township MARION

Weather CLEAR

Section E 1/4 Post SEC. 22

Temp. +53°

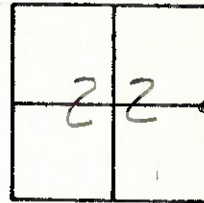
T3N, R7E

Personnel BURNSIDE

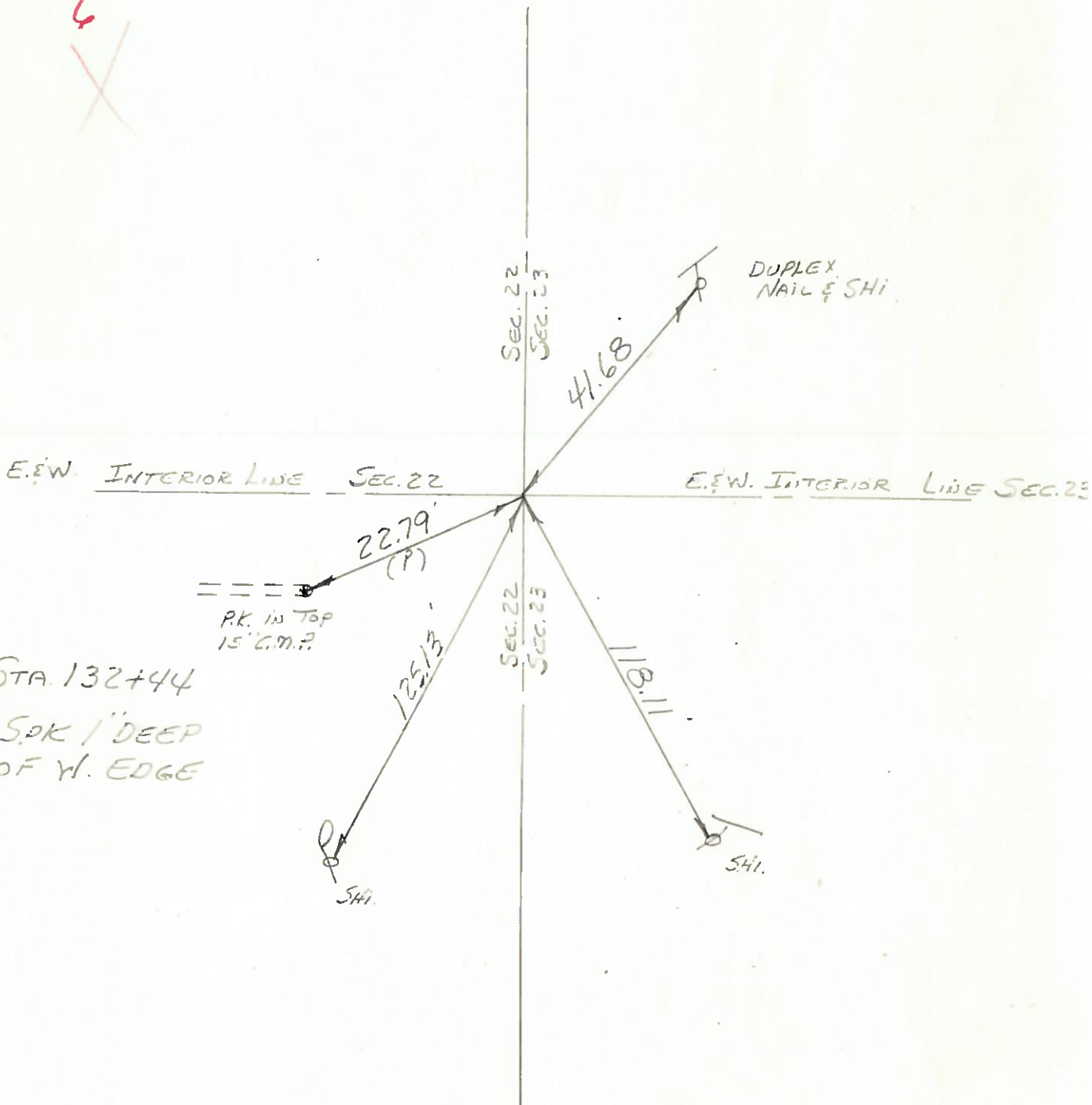
SMITH

KNAPE

MEAD



4
X



S.L.M. STA. 132+44

FD. R.R. SPK 1" DEEP
& 2" E. OF W. EDGE
PAVE