

O.D.O.T. DISTRICT 2 SURVEY OFFICE (USE ONLY)

PERSONNEL

REFERENCE NO. 7

SHEET 8 OF 25

NOTES AUBLE DATE 5/18/21
 H.C. NIESE WEATHER SUNNY
 R.C. O'DONNELL TEMP. 74°

ROUTE SR 109
 COUNTY HENRY
 TOWNSHIP MARION
 SECTION 22
 T 3 N R 7 E

DWG BY NIESE PID PAVETRAIN

TYPE MONUMENT P.K./WASHER

ON SURFACE - ~~BELOW~~ ON

OFFSET ☉ PAVEMENT 7.7' LT : ~~RT~~

- TO - EDGE PAVEMENT 3.5' S. OF ☉ CR D

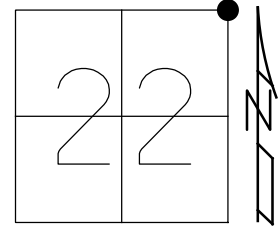
STATION: 158+97

HORZ.DATUM: NAD83(2011)

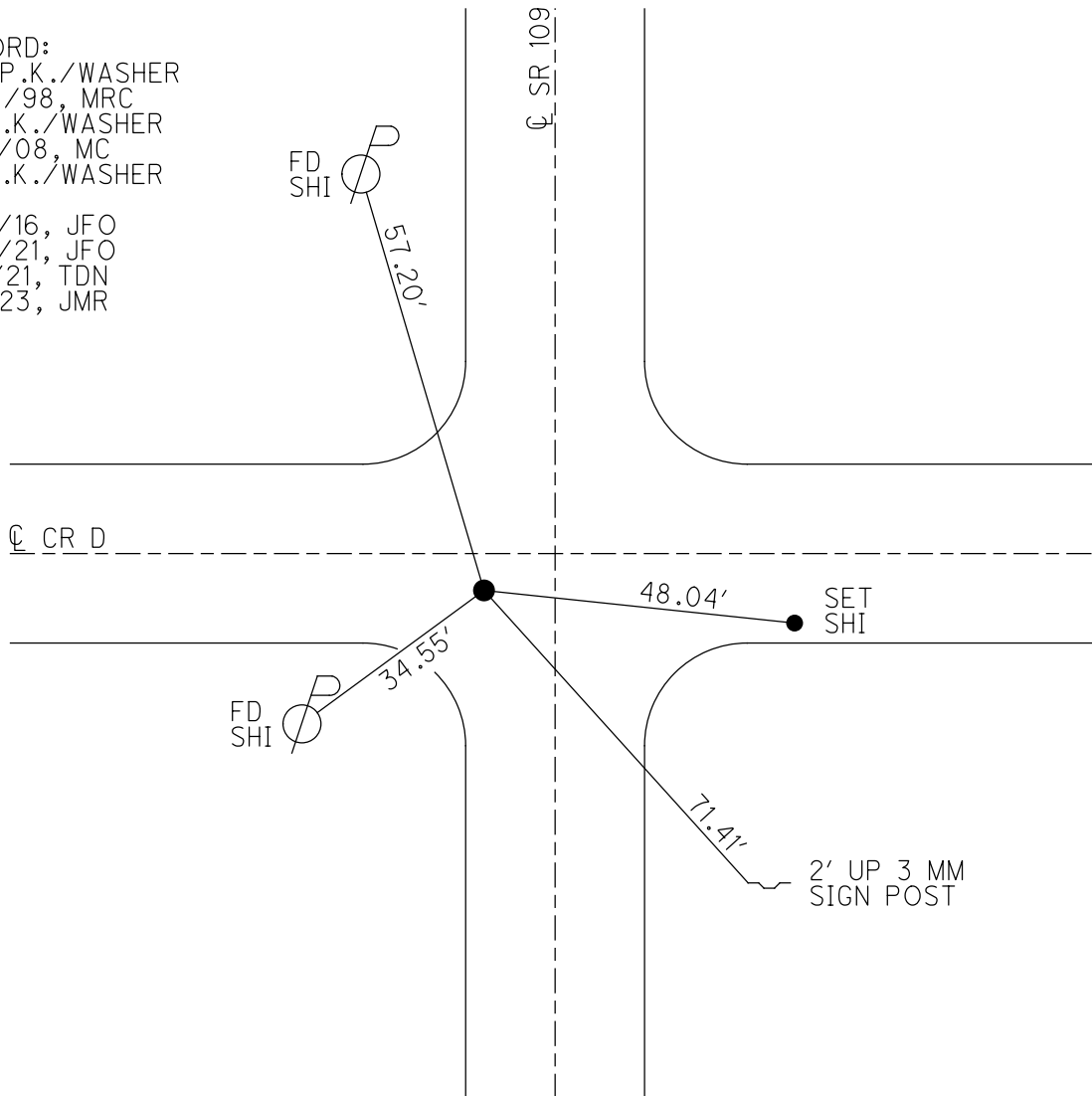
GEOID: NAVD88(2012A)

GRID: NORTHING: 566184.063

EASTING: 1545936.424



RECORD:
 SET P.K./WASHER
 9/23/98, MRC
 FD P.K./WASHER
 5/19/08, MC
 FD P.K./WASHER
 REF7
 6/17/16, JFO
 5/18/21, JFO
 9/3/21, TDN
 1/11/23, JMR



O.D.O.T. DISTRICT 2 SURVEY OFFICE (USE ONLY)

PERSONNEL

REFERENCE NO. 7

SHEET 8 OF 25

NOTES AUBLE

DATE 5/18/21

ROUTE SR 109

H.C. NIESE

WEATHER SUNNY

COUNTY HENRY

R.C. O'DONNELL

TEMP. 74°

TOWNSHIP MARION

SECTION 22

DWG BY NIESE PID PAVETRAIN

T 3 N R 7 E

TYPE MONUMENT P.K./WASHER

ON SURFACE - ~~BELOW~~ ON

OFFSET C PAVEMENT 7.7' LT : ~~RT~~

- TO - EDGE PAVEMENT 3.5' S. OF C CR D

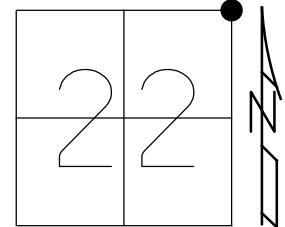
STATION: 158+97

HORZ.DATUM: NAD83(2011)

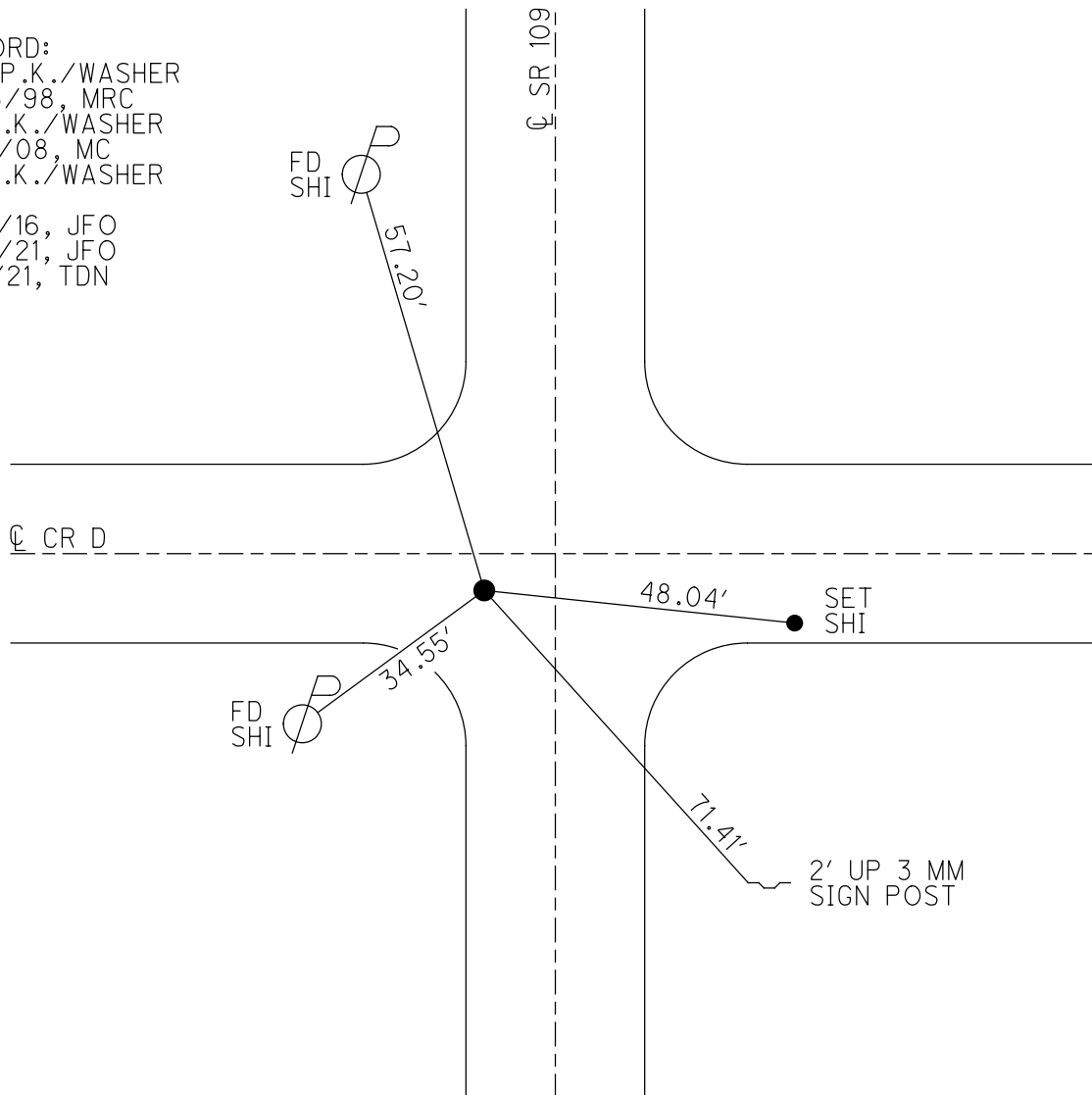
GEOID: NAVD88(2012A)

GRID: NORTHING: 566184.063

EASTING: 1545936.424



RECORD:
 SET P.K./WASHER
 9/23/98, MRC
 FD P.K./WASHER
 5/19/08, MC
 FD P.K./WASHER
 REF 7
 6/17/16, JFO
 5/18/21, JFO
 9/3/21, TDN

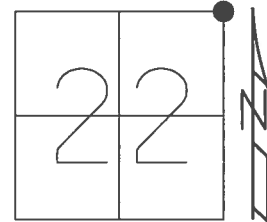


O.D.O.T. DISTRICT 2 SURVEY OFFICE (USE ONLY)

PERSONNEL _____ REFERENCE NO. 7 SHEET 8 OF 26

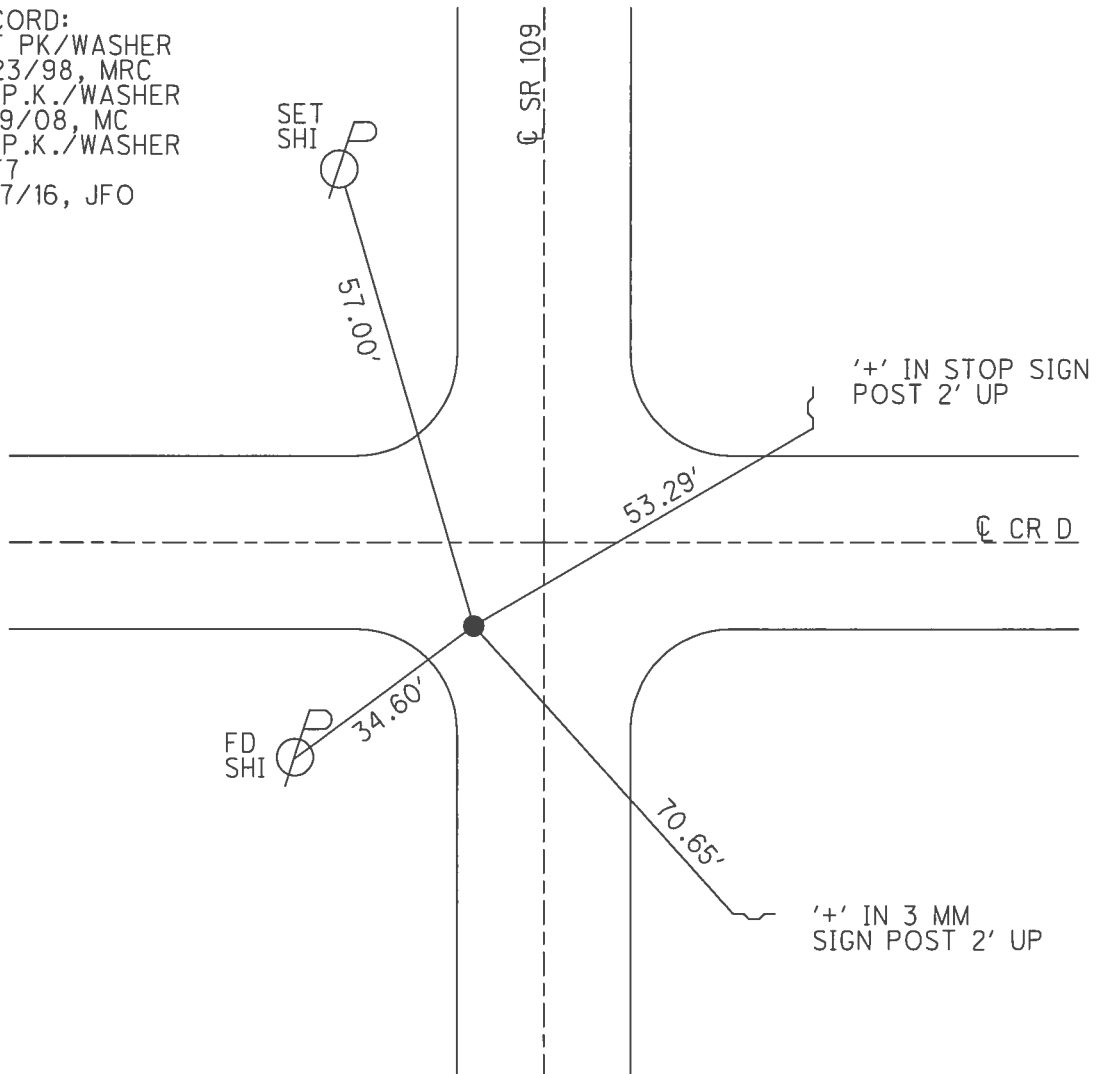
NOTES HUSS DATE 5/19/08 ROUTE SR 109
 H.C. CANTERBURY WEATHER SUNNY COUNTY HENRY
 R.C. HUSS TEMP. 57° TOWNSHIP MARION
 _____ SECTION 22
 _____ T 3 N R 7 E

TYPE MONUMENT P.K./WASHER
 ON SURFACE - ~~BELOW~~ ON _____
 LEFT - ☉ PAV'T - ~~RIGHT~~ 7.7', 3.5' S OF ☉ CR D
 - TO - EDGE PAVEMENT
 S.L.M. 158+97



Grid: Northing: 566184.063 Easting: 1545936.424

RECORD:
 SET PK/WASHER
 9/23/98, MRC
 FD P.K./WASHER
 5/19/08, MC
 FD P.K./WASHER
 REF7
 6/17/16, JFO



O.D.O.T. DISTRICT 2 SURVEY OFFICE

PERSONNEL _____

REFERENCE NO. 7

SHEET 7 OF 21

NOTES Canterbury

H.C. Canterbury

R.C. Rousar

DATE 5-7-98

WEATHER OVERCAST

TEMP. 65°

ROUTE 109

COUNTY HENRY

TOWNSHIP MARION

SECTION 22

T. 3 N R. 7 E

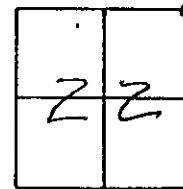
TYPE MONUMENT SM RR SPIKE

ON SURFACE BELOW Yes

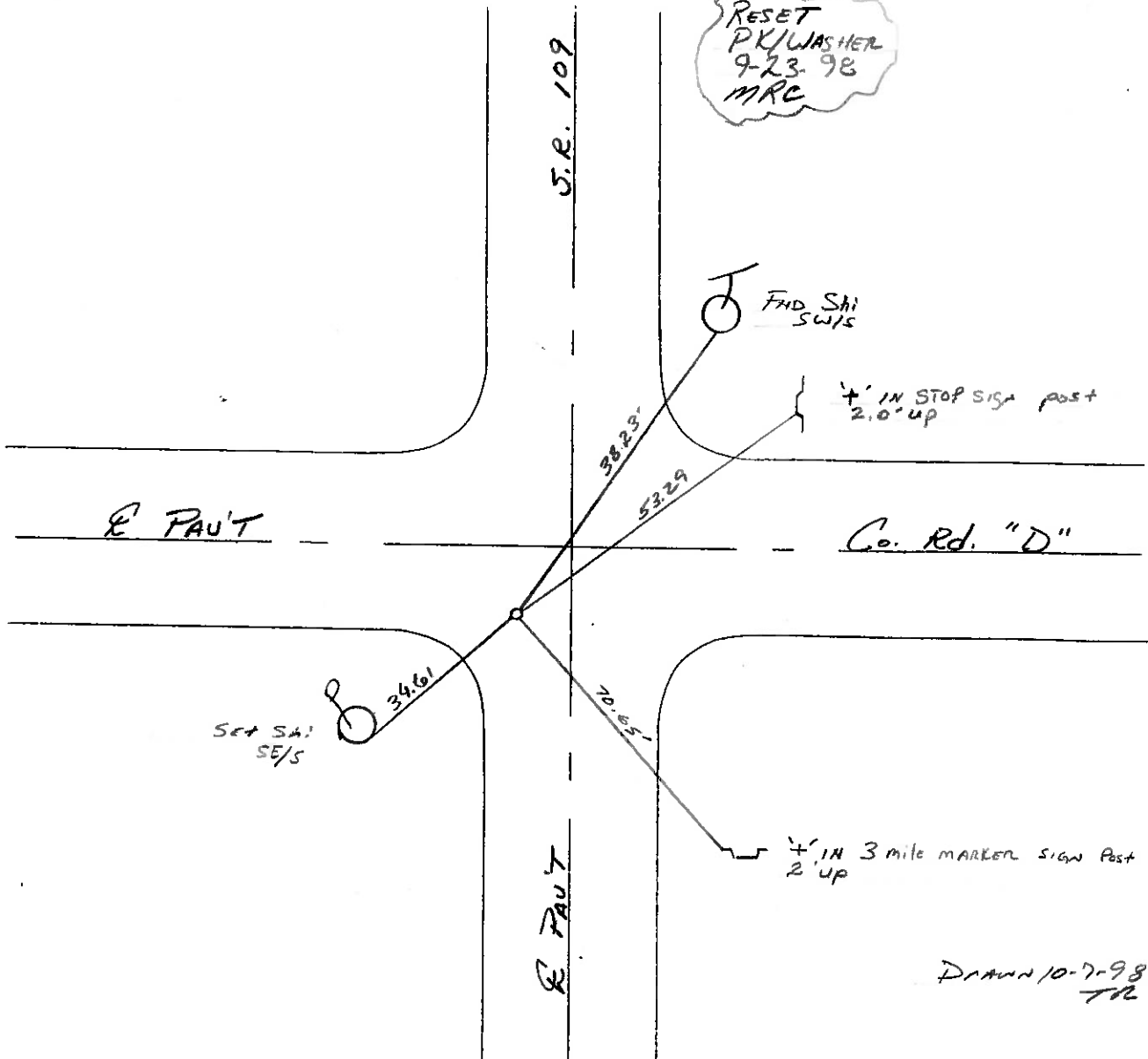
LEFT-☐ PAV'T. = RIGHT 8.1 Lt

TO EDGE PAVEMENT 2.0' S of ☐ Co. Rd. 'D' West

S.L.M. 4 + 864.63 slk (158199)



RESET
PK/WASHER
9-23-98
MRC



Drawn 10-7-98
TR

O.D.O.T. DISTRICT 2 SURVEY OFFICE

PERSONNEL

NOTES BARNHISEL

H.C. " "

R.G. HOFFMAN

REFERENCE NO. 7

SHEET 7 OF

DATE 3-29-89

WEATHER cloudy - Windy

TEMP. +44°

ROUTE 109

COUNTY HENRY

TOWNSHIP MARION

SECTION 22

T 3 N R 7 E

TYPE MONUMENT Sm. R.R. Spk.

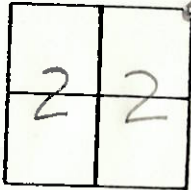
ON SURFACE - BELOW YES

LEFT- & PAV'T. - RIGHT 8.1

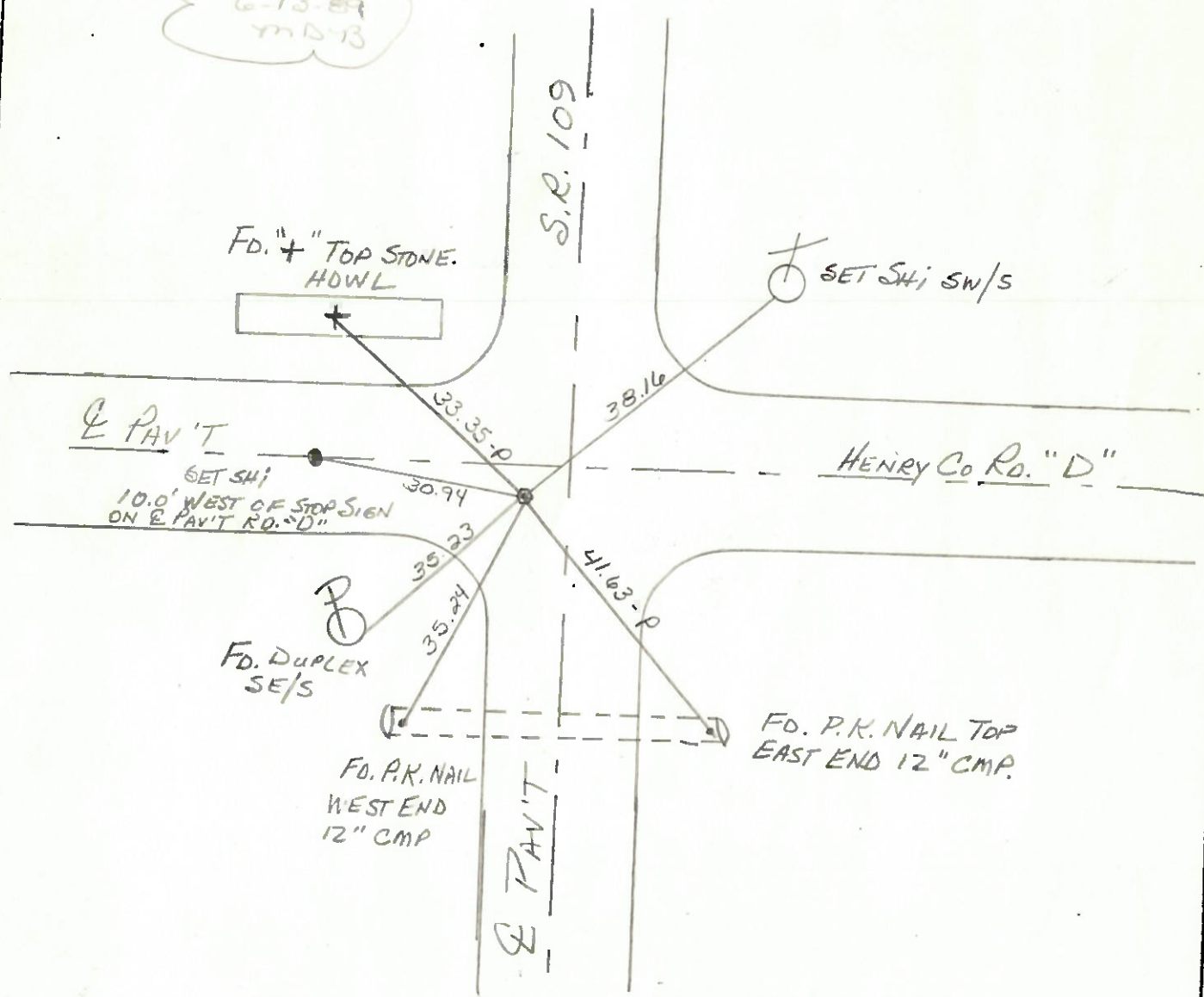
TO EDGE PAVEMENT 2.0' S of & PAV'T CARO.

S.L.M. 158+97

2.0' S of & PAV'T CARO.
"D" to the WEST



Set Sm RR Spk
6-13-89
m D-13



Q.D.O.T. DISTRICT 2 SURVEY OFFICE

SHEET _____ OF _____

County HENRY S.R. 109

Township MARION

Section 22

T3N, R7E

Personnel HOFFMAN

LOERKE

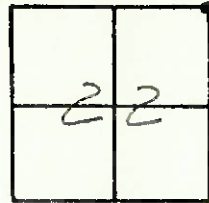
HOUSEHOLDER

BARHISEL

Date MARCH 10, 83

Weather P. CLEAR

Temp. +35°



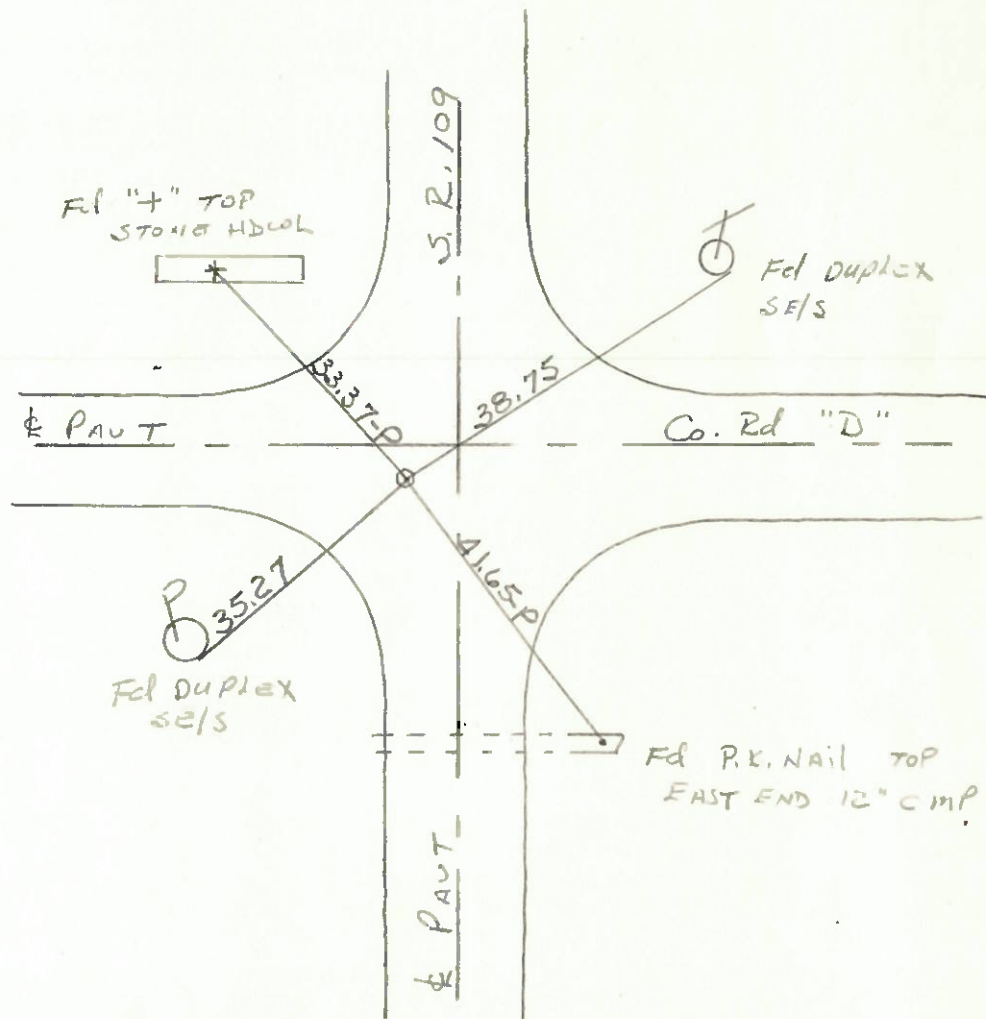
7

Fd SMALL R.R. SPK @ SURFACE

S.L.M. 158+97

8.0' LT. & PART S.R. 109

3.0' SOUTH & PART Co. Rd "D"



County HENRY S.R. 109

Date 5-22-79

Township MARION

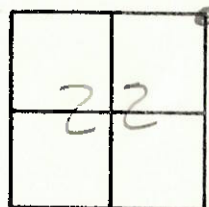
Weather CLEAR

Section N.E. COR. SEC. 22

Temp. +53°

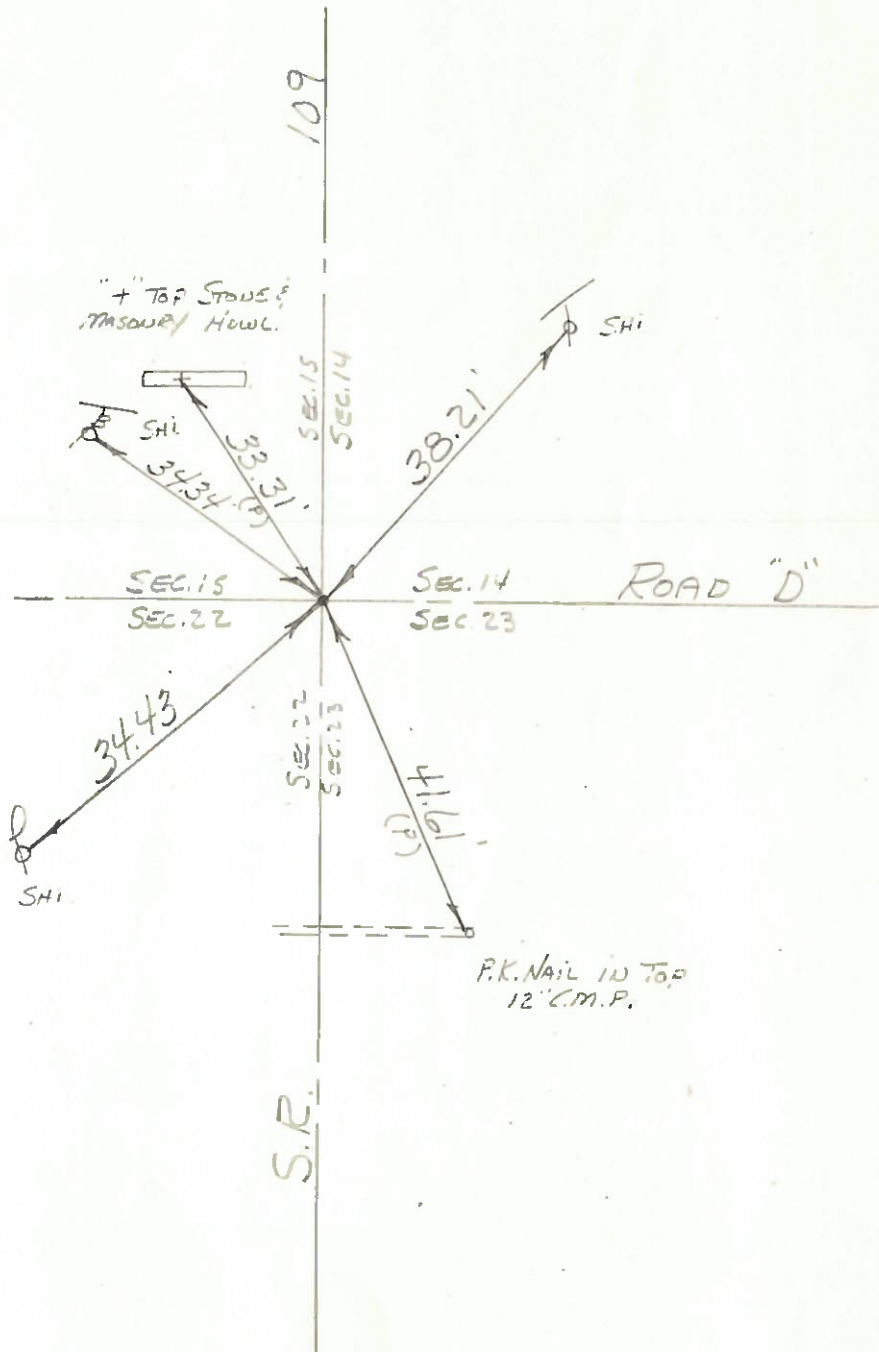
T3N, R7E

Personnel BURNSIDE



SMITH
KNAPE
MEAD

7



HENRY Co.

ROAD "D"

SEC. 15
SEC. 22

SEC. 14
SEC. 23

109

S.R.

34.43

41.17

34.34 (9)

"TOP STONE & MASONRY HOWL."

P.K. NAIL IN TOP 12" C.M.P.

SL.M. STA 158+97
FD. SMALL R.R. Spk.
1" DEEP & 2" E. OF
W. EDGE & PAVE. S.R. 109

PERSONNEL	TITLE	PERSONNEL	TITLE	COUNTY	HEALY	DATE	JUL 30 1973
Trause				S. R.	109	WEATHER	
Nasser				SEC.	MARION TWP	TEMP.	
Ernst							
Vogel							

