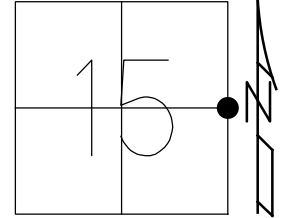


O.D.O.T. DISTRICT 2 SURVEY OFFICE (USE ONLY)

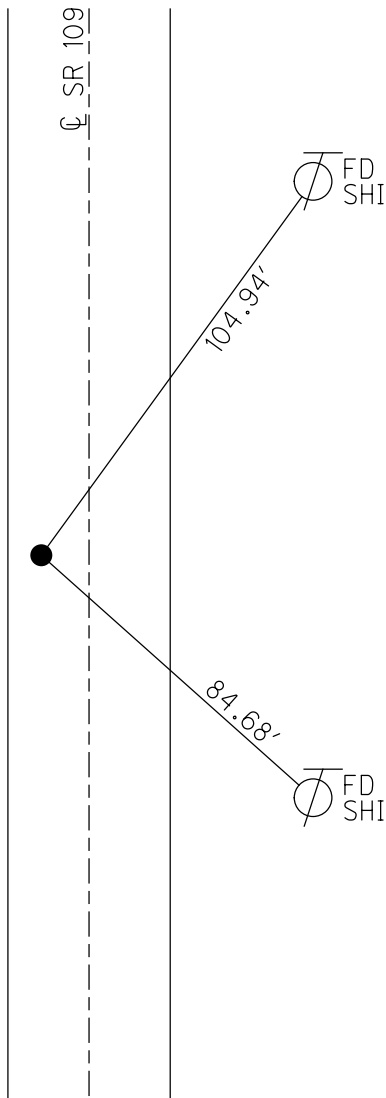
PERSONNEL _____ REFERENCE NO. 8 SHEET 9 OF 25
 NOTES AUBLE DATE 5/18/21 ROUTE SR 109
 H.C. NIESE WEATHER SUNNY COUNTY HENRY
 R.C. O'DONNELL TEMP. 74° TOWNSHIP MARION
 SECTION 15
 DWG BY NIESE PID PAVETRAIN T 3 N R 7 E

TYPE MONUMENT P.K./WASHER
 ON SURFACE - ~~BELOW~~ ON
 OFFSET ☐ PAVEMENT 7.4' LT : ~~RT~~
2.3' TO LT EDGE PAVEMENT
 STATION: 185+46



HORZ.DATUM: NAD83(2011) GEOID: NAVD88(2012A)
 GRID: NORTHING: 568829.858 EASTING: 1545957.459

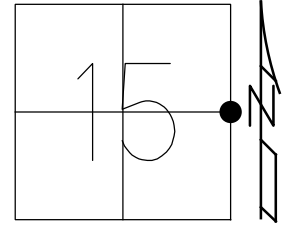
RECORD:
 SET P.K./WASHER
 9/23/98, MRC
 FD P.K./WASHER
 5/19/08, MC
 FD P.K./WASHER
 REF8
 6/17/16, JFO
 5/18/21, JFO
 9/3/21, TDN
 1/11/23, JMR



O.D.O.T. DISTRICT 2 SURVEY OFFICE (USE ONLY)

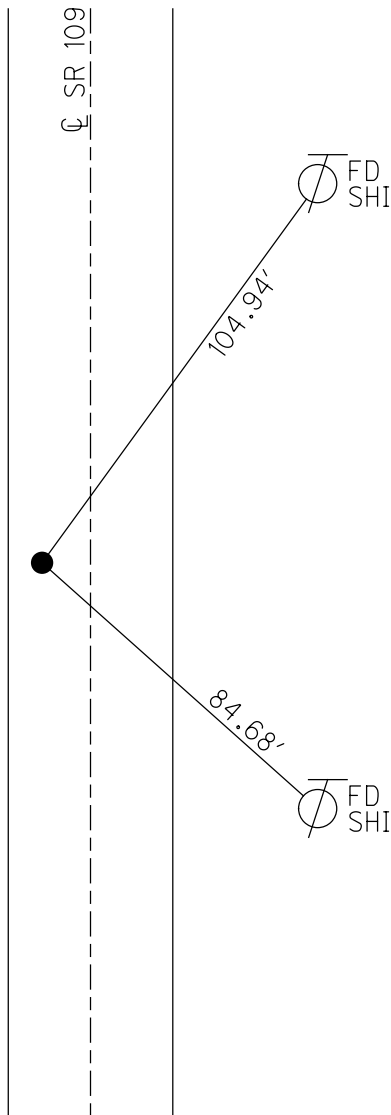
PERSONNEL _____ REFERENCE NO. 8 SHEET 9 OF 25
NOTES AUBLE DATE 5/18/21 ROUTE SR 109
H.C. NIESE WEATHER SUNNY COUNTY HENRY
R.C. O'DONNELL TEMP. 74° TOWNSHIP MARION
DWG BY NIESE PID PAVETRAN SECTION 15
T 3 N R 7 E

TYPE MONUMENT P.K./WASHER
ON SURFACE - ~~BELOW~~ ON
OFFSET \varnothing PAVEMENT 7.4' LT : ~~RT~~
2.3' TO LT EDGE PAVEMENT
STATION: 185+46



HORIZ.DATUM: NAD83(2011) GEOID: NAVD88(2012A)
GRID: NORTHING: 568829.858 EASTING: 1545957.459

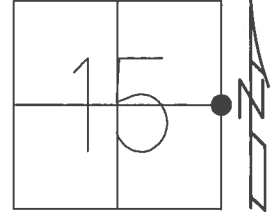
RECORD:
SET P.K./WASHER
9/23/98, MRC
FD P.K./WASHER
5/19/08, MC
FD P.K./WASHER
REF8
6/17/16, JFO
5/18/21, JFO
9/3/21, TDN



O.D.O.T. DISTRICT 2 SURVEY OFFICE (USE ONLY)

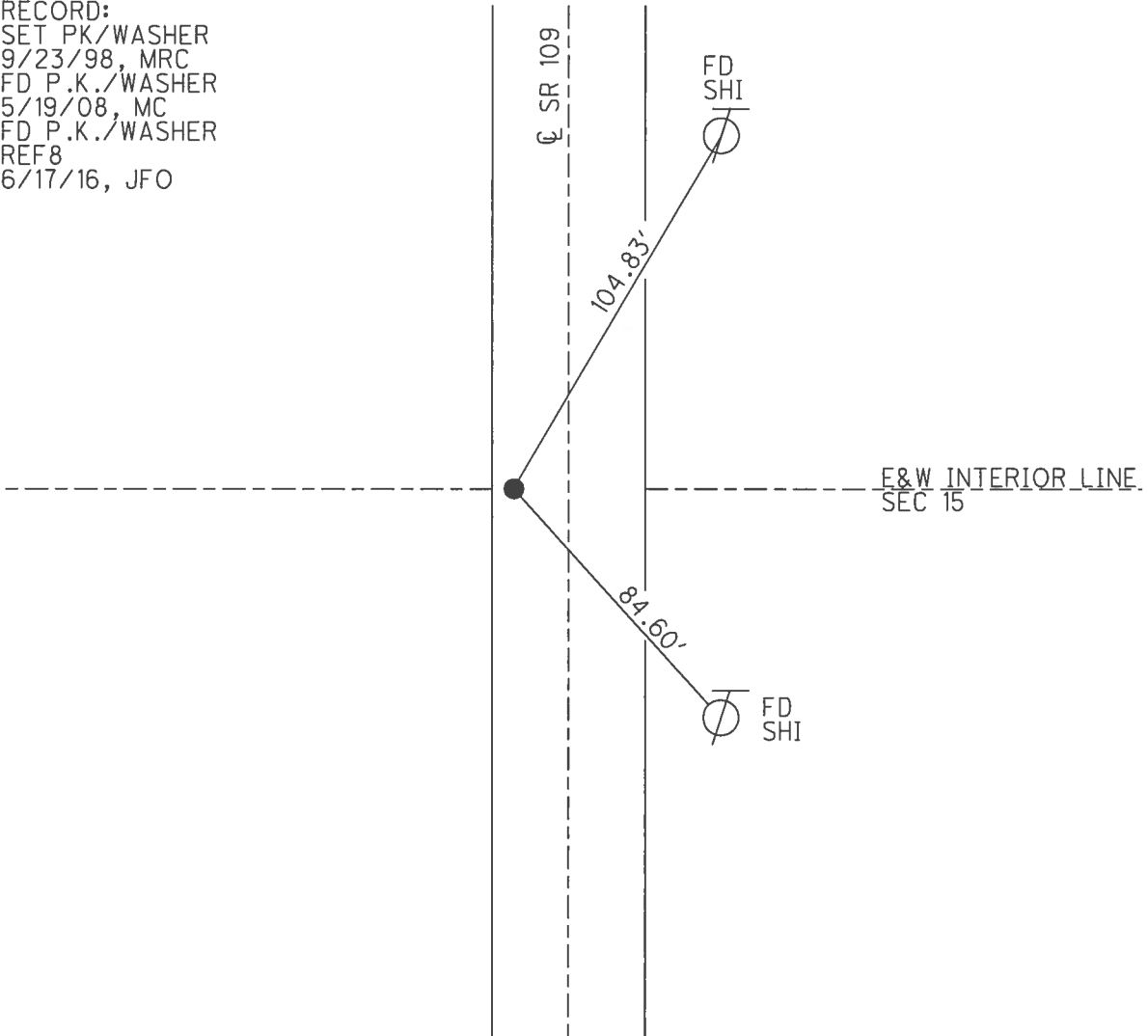
PERSONNEL	REFERENCE NO.	<u>8</u>	SHEET	<u>9</u>	OF	<u>26</u>
NOTES	HUSS	DATE	<u>5/19/08</u>	ROUTE	<u>SR 109</u>	
H.C.	<u>CANTERBURY</u>	WEATHER	<u>SUNNY</u>	COUNTY	<u>HENRY</u>	
R.C.	<u>HUSS</u>	TEMP.	<u>57°</u>	TOWNSHIP	<u>MARION</u>	
				SECTION	<u>15</u>	
				T	<u>3</u>	R
				E	<u>7</u>	<u>E</u>

TYPE MONUMENT P.K./WASHER
 ON SURFACE - ~~BELOW~~ ON _____
 LEFT - ☉ PAV'T - ~~RIGHT~~ 7.4'
2.3' TO LT EDGE PAVEMENT
 S.L.M. 185+46



Grid: Northing: 568829.858 Easting: 1545957.459

RECORD:
 SET PK/WASHER
 9/23/98, MRC
 FD P.K./WASHER
 5/19/08, MC
 FD P.K./WASHER
 REF8
 6/17/16, JFO



O.D.O.T. DISTRICT 2 SURVEY OFFICE

PERSONNEL

REFERENCE NO. 8

SHEET 8 OF 21

NOTES Canterbury

H.C. Canterbury

R.C. Rousas

DATE 5-7-98

WEATHER OVERCAST

TEMP. 65°

ROUTE 109

COUNTY HENRY

TOWNSHIP MARION

SECTION 15

T3 N R 7 E

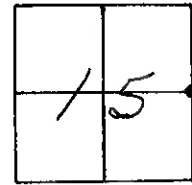
TYPE MONUMENT P.K. NAIL

~~ON SURFACE~~ - BELOW 2" Below

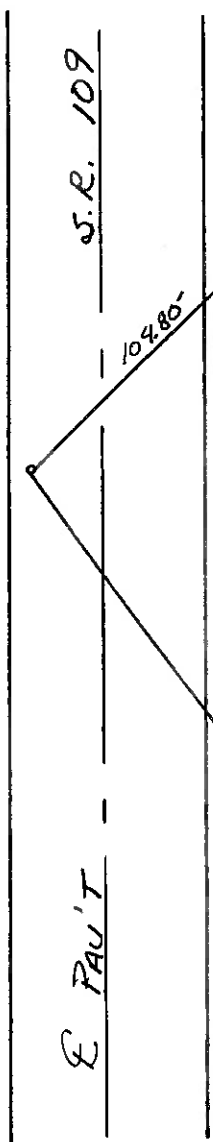
LEFT - ~~C PAV'T.~~ - RIGHT TO LT

LS TO LT EDGE PAVEMENT

S.L.M. S+674.38 SLK (185+96)



RESET
PK/WASHER
9-23-98
MRC



E&W INTERIOR LINE
SEC 15

SET S&W
SW/S

104.80'

84.62'
FIND. S&W
NW/S

E&W INTERIOR LINE

DRAWN 10-7-98
TR

O.D.O.T. DISTRICT 2 SURVEY OFFICE

PERSONNEL

REFERENCE NO. 8

SHEET 8 OF

NOTES BARHISEL

H.C. " "

R.C. HOFFMAN

DATE 3-29-89

WEATHER cloudy-windy

TEMP. +44°

ROUTE 109

COUNTY HENRY

TOWNSHIP MARION

SECTION 15

T 3 N R 7 E

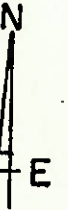
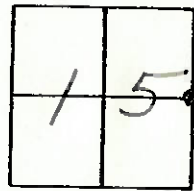
TYPE MONUMENT P.K. NAIL

ON SURFACE - BELOW YES

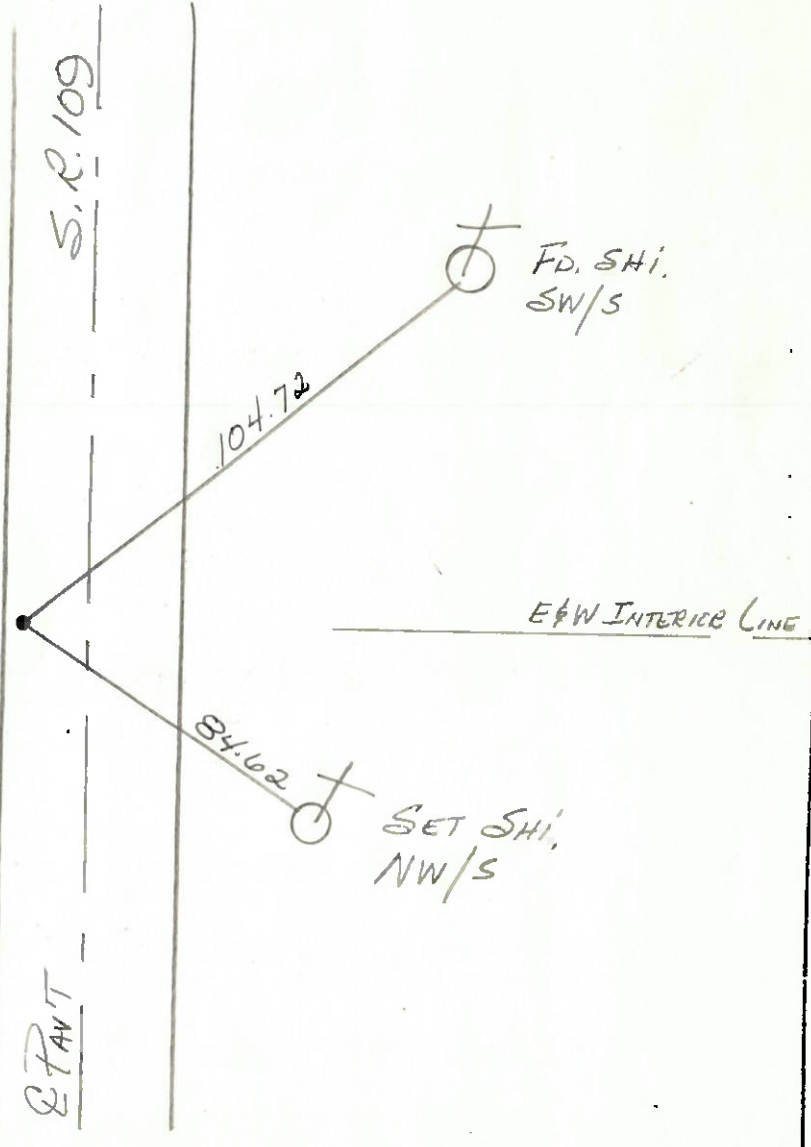
LEFT-☉ PAV'T. - RIGHT 7.9

1.☉ TO LT. EDGE PAVEMENT

S.L.M. 105+46



Set Sm RR Spk
6-13-89
MD-13



Q.D.O.T. DISTRICT 2 SURVEY OFFICE

Sht. 7 of 8

County HENRY S.R. 109

Township MARION

Section E 1/4 Post Sec. 15

T3N, R7E

Personnel BURNSIDE

SMITH

KNAPE

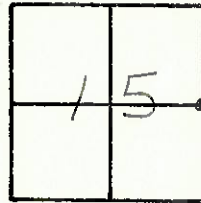
MEAD

Date 5-22-79

OK
4/19/83
SMH

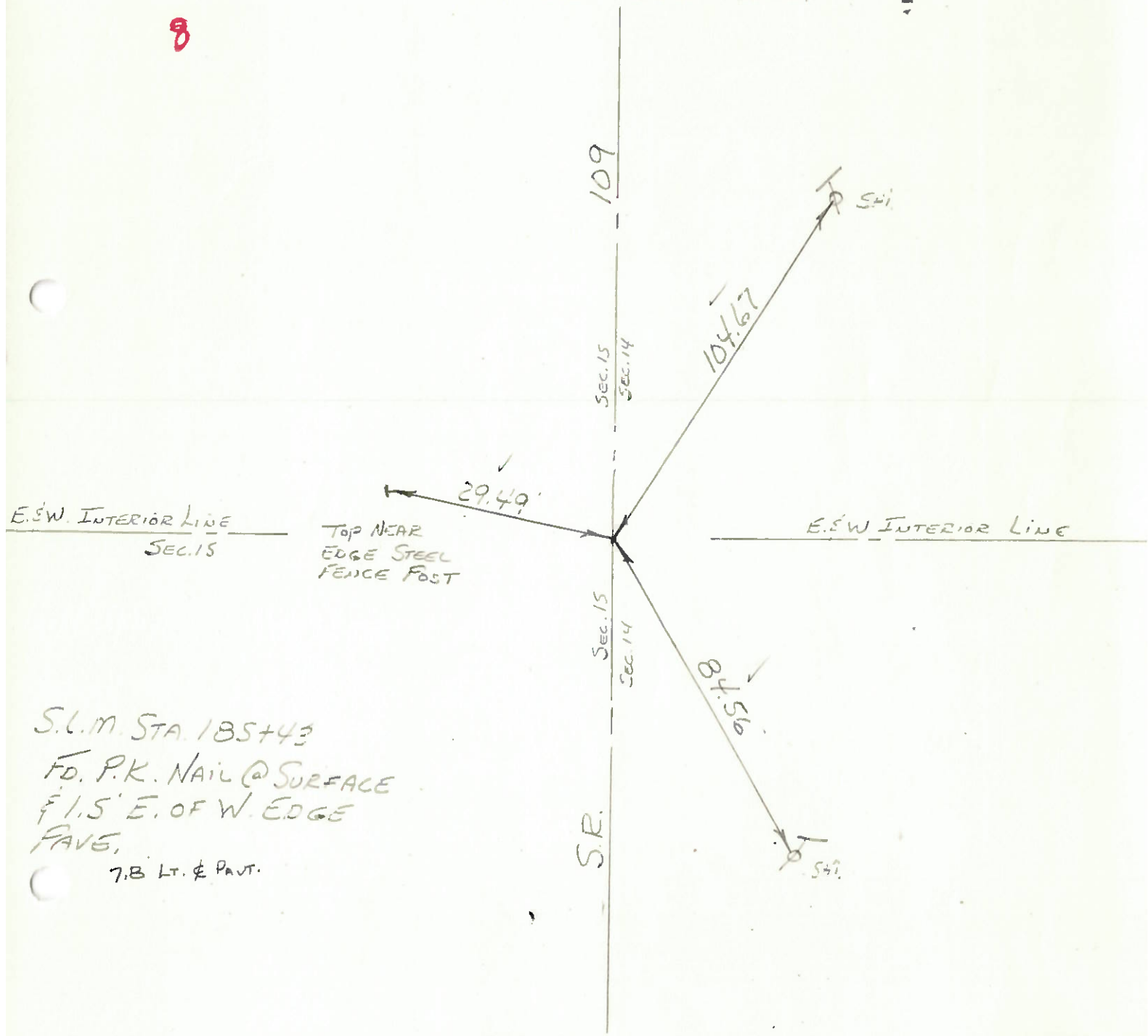
Weather CLEAR

Temp. +53°



END POINT CHECK SR 109

8



S.L.M. STA. 185+43
FD. P.K. NAIL @ SURFACE
1.5' E. OF W. EDGE
FAVE.
7.8 LT. & PAVT.