

O.D.O.T. DISTRICT 2 SURVEY OFFICE (USE ONLY)

PERSONNEL _____ REFERENCE NO. 9 A SHEET 11 OF 26
 NOTES CANTERBURY DATE 05-07-1998 ROUTE SR 109
 H.C. CANTERBURY WEATHER OVERCAST COUNTY HENRY
 R.C. ROUSOS TEMP. 65° TOWNSHIP MARION
 _____ SECTION 10
 _____ T 3 N R 7 E

TYPE MONUMENT PK

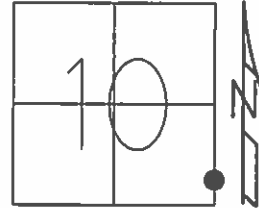
ON SURFACE - BELOW ON

~~LEFT~~ - ☉ PAV'T - ~~RIGHT~~ ON, 34' S OF PVM'T OF COWEN ST.

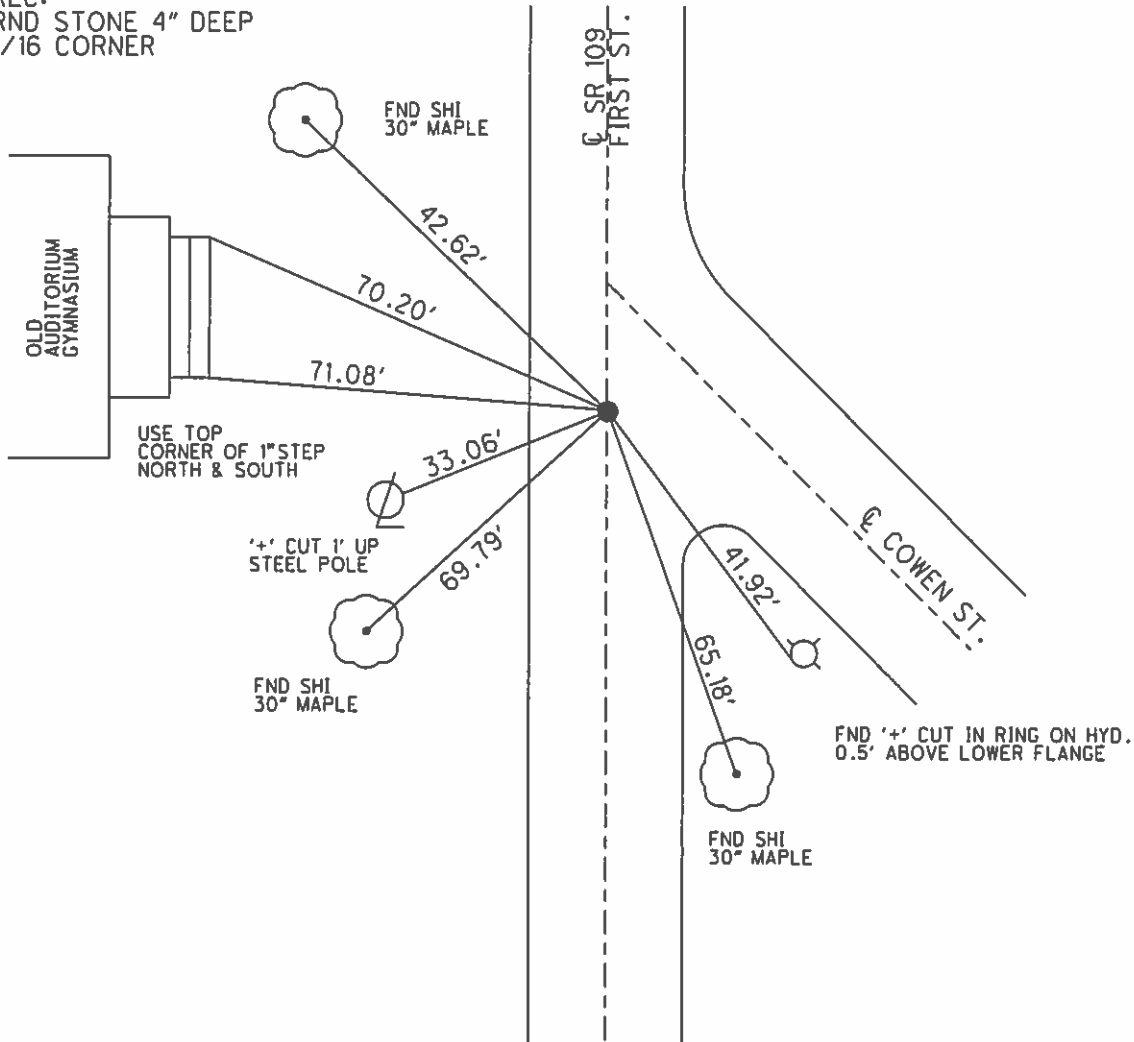
16.7' TO LT FACE OF CURB

S.L.M. 225+15

Grid: Northing: _____ Easting: _____



REC:
 RND STONE 4" DEEP
 1/16 CORNER



O.D.O.T. DISTRICT 2 SURVEY OFFICE

PERSONNEL _____

REFERENCE NO. 9A

SHEET 10 OF 21

NOTES Canterbury

H.C. Canterbury

R.C. Rousos

DATE 5-7-98

WEATHER OVERCAST

TEMP. 65°

ROUTE 109

COUNTY HENRY

TOWNSHIP Marion

SECTION 10

T3 N R 7 E

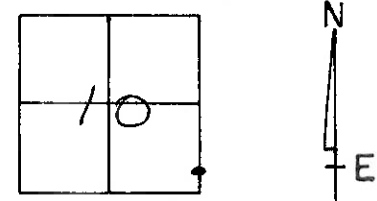
TYPE MONUMENT P.K.

ON SURFACE - ~~BELOW~~ YES

LEFT-~~0~~ PAV'T. - ~~RIGHT~~ ON E 34'S of Pkmt.

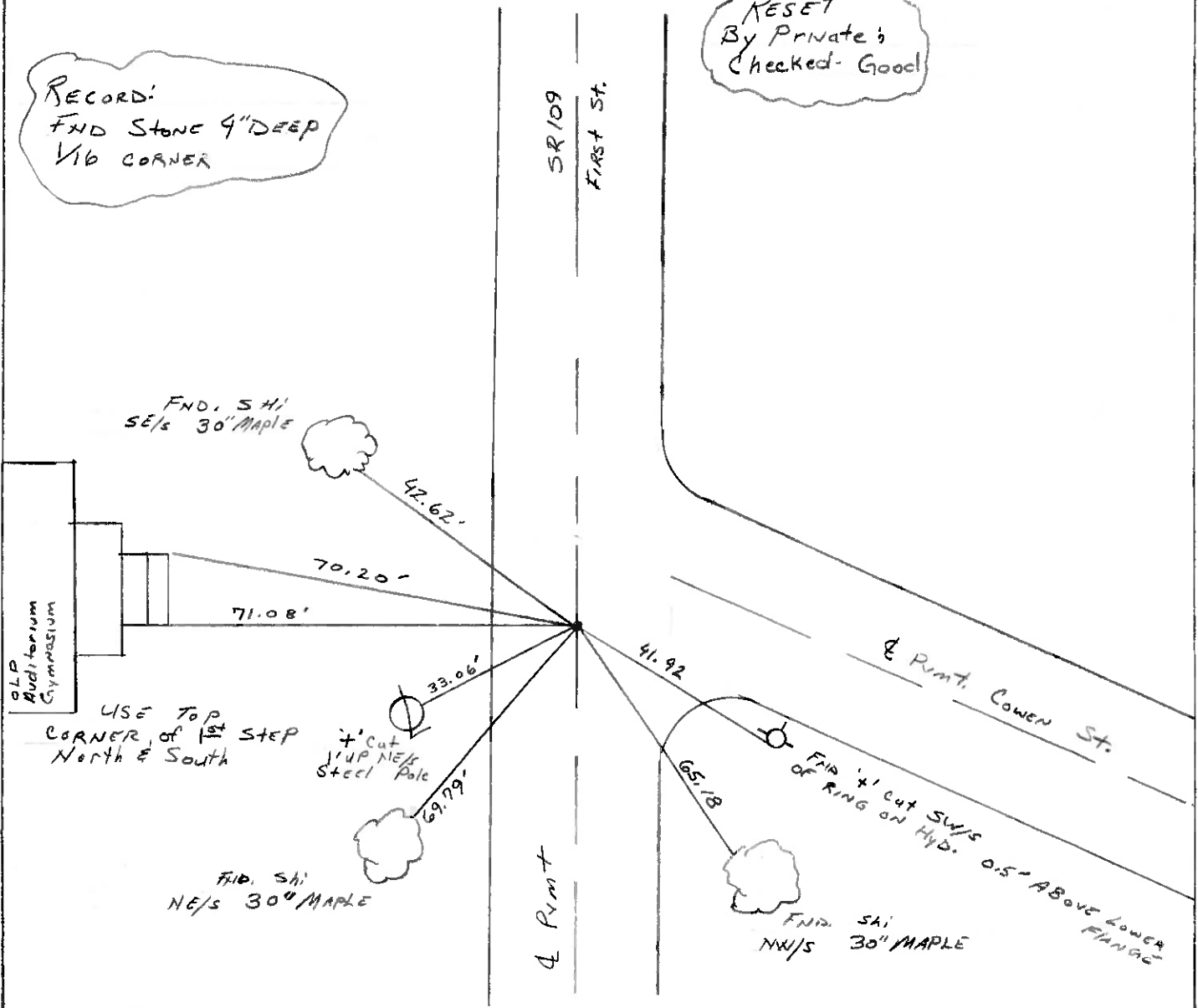
16.7 TO L + EDGE PAVEMENT OF Cowen St.
FACE of CURB

S.L.M. 225+15 SLK (225+15)



RECORD:
FND Stone 4" DEEP
Vib CORNER

RESET
By Private's
Checked - Good



DRAWN BY: TR

O.D.O.T. DISTRICT 2 SURVEY OFFICE

PERSONNEL

NOTES BARNHISEL

H.C. " " "

R.C. HOFFMAN

REFERENCE NO. 9A

SHEET 10 OF

DATE 3-29-89

WEATHER cloudy - windy

TEMP. +44°

ROUTE 109

COUNTY HENRY

TOWNSHIP MARION

SECTION 10

T 3 N R 7 E

TYPE MONUMENT P.K. + WASHER

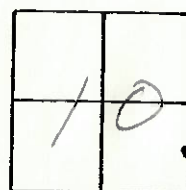
ON SURFACE - BELOW YES

LEFT - Q PAV'T. - RIGHT ON E

15.6 TO LT. EDGE PAVEMENT

S.L.M. 225 + 15

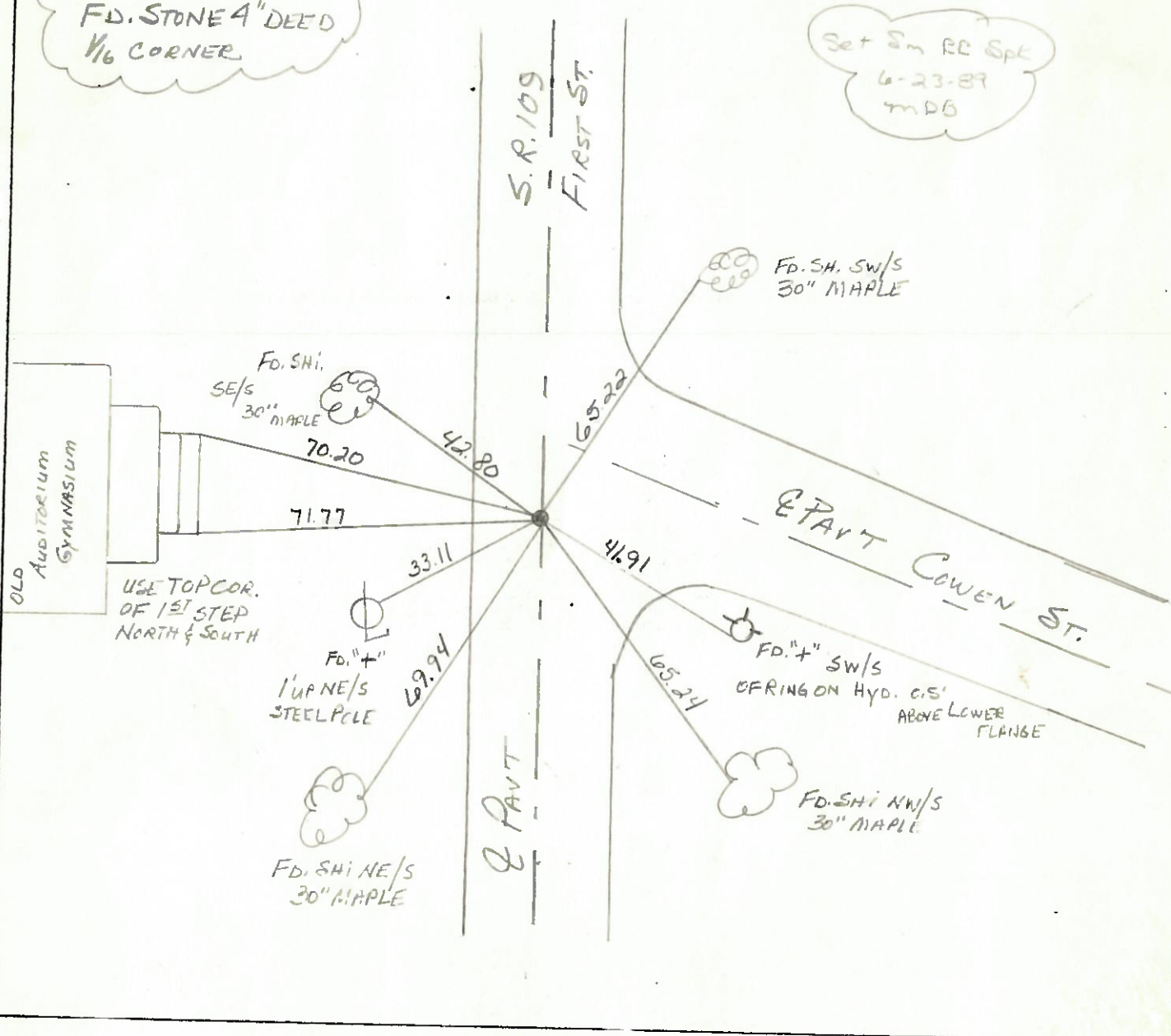
34'S of Q PAV'T
OF COWEN ST.



RECORD:

FD. STONE 4" DEED
1/6 CORNER

Set Sm RE Spk
6-23-89
MDB



Q.D.O.T. DISTRICT 2 SURVEY OFFICE

SHEET _____ OF _____

County HENRY S.R. 109

Date April 19, 83

Township MARION

Weather clear

Section 10 IN HAMLER

Temp. +30°

T3N, R7E

Personnel Hoffman

LOHRKE

BARHISEL

#9-A



Fd SMALL R.R. SPIC @ surface
ON & PAUT SR 109

SLM 224 + 72

34' SOUTH of & PAUT COWEN ST

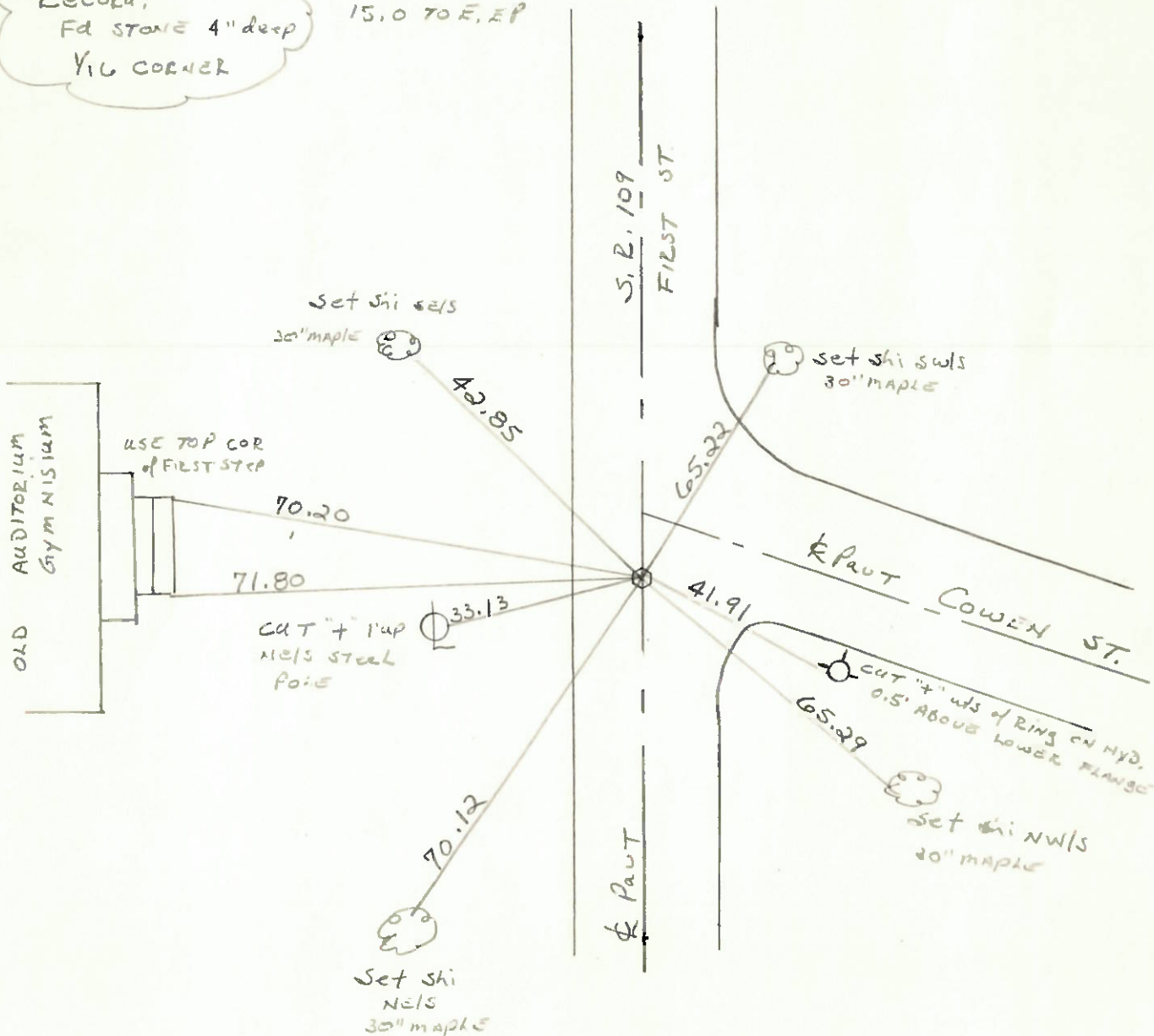
SET P.K./WASHER

15.4 TO W.E.P.

9-19-83 SWH

Record;
Fd STONE 4" deep
YIC CORNER

15.0 TO E.E.P



| PERSONNEL | TITLE | PERSONNEL | TITLE | COUNTY | DATE |
|-----------|-------|-----------|-------|------------------|----------------|
| Stone | | | | Henry | 13 May 74 |
| Michalek | | | | S. R. # 109 110 | WEATHER Cloudy |
| Dunn | | | | SEC. Marion Twp. | TEMP. 55° |
| Curtis | | | | | |

DESCRIPTION Refs. to Control Points JOB NO. 02999(6)

