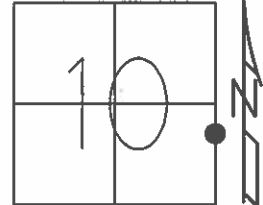


O.D.O.T. DISTRICT 2 SURVEY OFFICE (USE ONLY)

PERSONNEL _____ REFERENCE NO. 9 C SHEET 12 OF 26

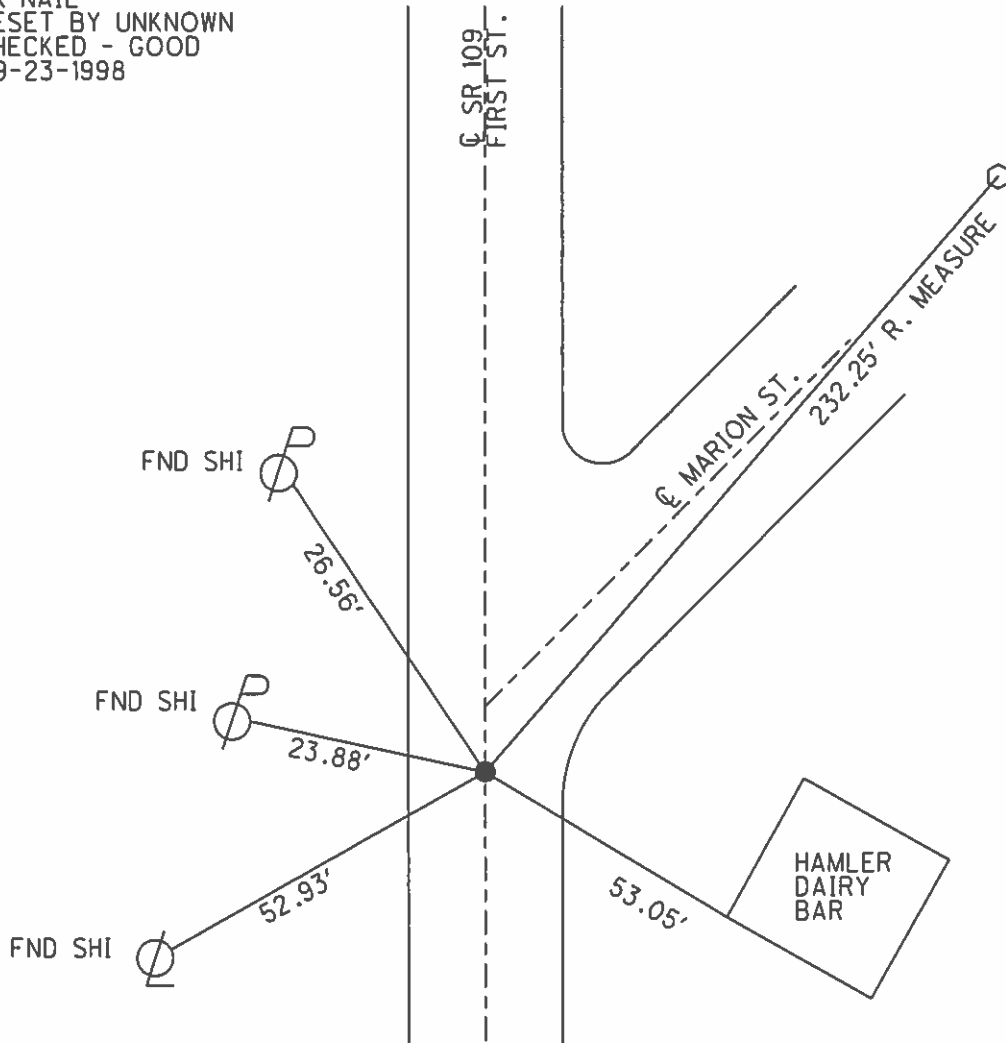
NOTES CANTERBURY DATE 05-07-1998 ROUTE SR 109
 H.C. CANTERBURY WEATHER CLOUDY COUNTY HENRY
 R.C. ROUSOS TEMP. 65° TOWNSHIP MARION
 _____ SECTION 10
 _____ T 3 N R 7 E

TYPE MONUMENT PK
 ON SURFACE - ~~BELOW~~ ON
~~LEFT - C~~ PAV'T - ~~RIGHT~~ ON
16.3 TO LT EDGE OF CURB
 S.L.M. 226+95



Grid: Northing: _____ Easting: _____

PK NAIL
 RESET BY UNKNOWN
 CHECKED - GOOD
 09-23-1998



O.D.O.T. DISTRICT 2 SURVEY OFFICE

PERSONNEL

REFERENCE NO. 9-C

SHEET 11 OF 21

NOTES Canterbury

H.C. Canterbury

R.C. Rousar

DATE 5-7-98

WEATHER Cloudy

TEMP. 65°

ROUTE 109

COUNTY Henry

TOWNSHIP MARION

SECTION 10

T3 N R 7 E

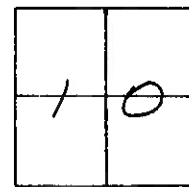
TYPE MONUMENT P.K.

ON SURFACE - ~~BELOW~~ ON SURFACE

LEFT - ☉ PAV'T. - RIGHT

16.3 TO LT. EDGE PAVEMENT EDGE FACE OF CURB

S.L.M. 226.95 SLK (226+95 SLK)

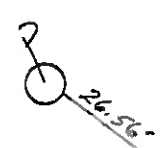


P.K. NAIL
RESET BY UNKNOWN
CHECKED - GOOD
9-23-98

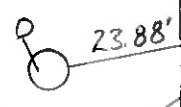
SR 109
First St.

E Rmt MARION ST.
232.25' R-MEAS.

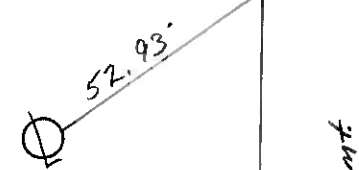
FIND SHI E/S



SET SHI E/S



FIND '4' NE/S
1' UP STEEL POLE



☉ Point



DRAWN BY: TR

O.D.O.T. DISTRICT 2 SURVEY OFFICE

PERSONNEL _____

REFERENCE NO. 9-C

SHEET 11 OF _____

NOTES BARNHISEL

H.C. _____

R.C. HOFFMAN

DATE 3-29-89

WEATHER cloudy-windy

TEMP. +44°

ROUTE 109

COUNTY HENRY

TOWNSHIP MARION

SECTION 10

T 3 N R 7 E

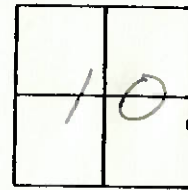
TYPE MONUMENT P.K. & WASHER

ON SURFACE - ~~BELOW~~ YES

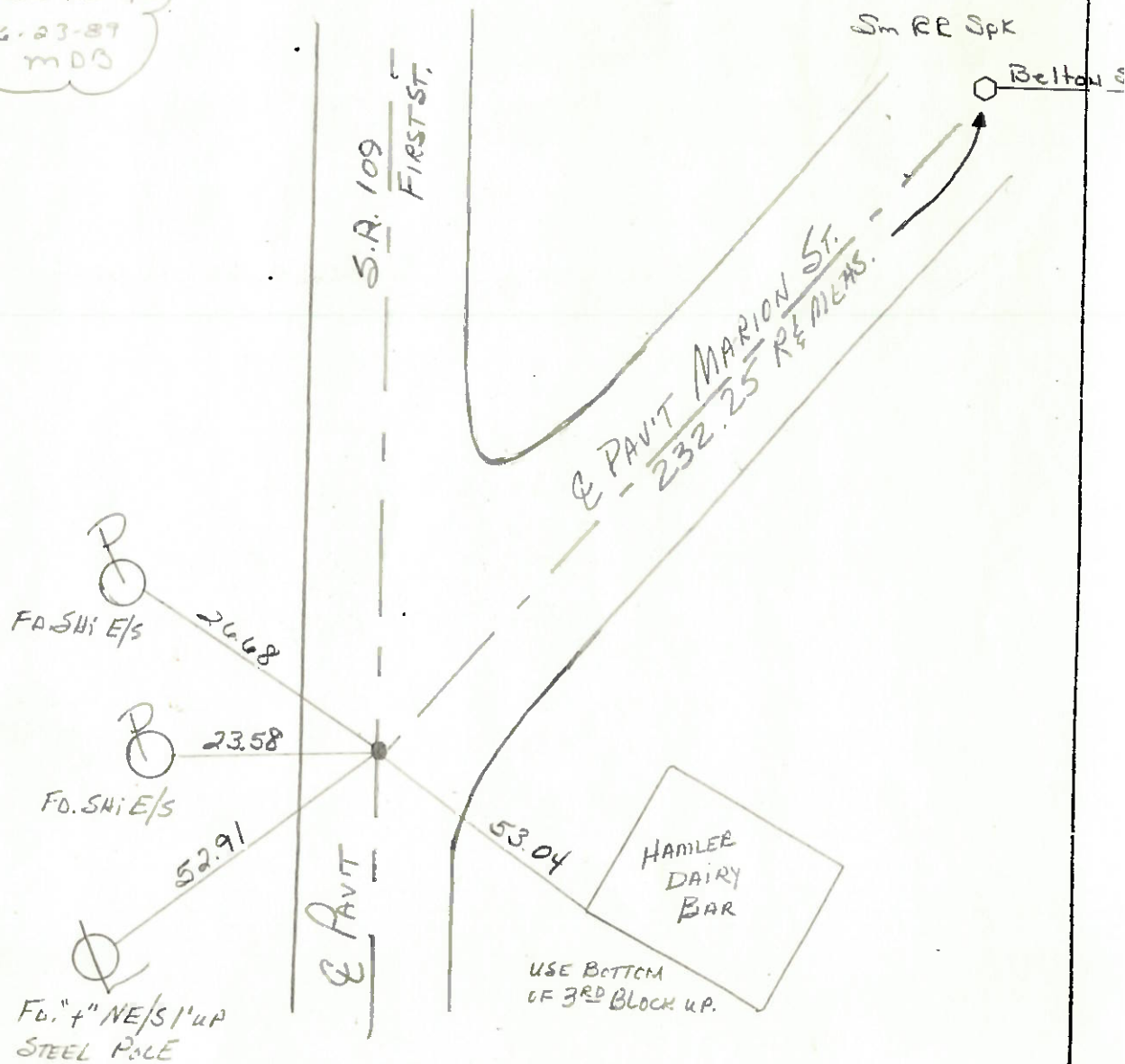
LEFT - Q PAV'T. - RIGHT E PAVIT OF S.R. 109 & MARION ST.

14.7 TO LT. EDGE PAVEMENT

S.L.M. 226+95



Set & Sm RR Spk
6-23-87
MDD



Q.D.O.T. DISTRICT 2 SURVEY OFFICE

SHEET _____ OF _____

County HENRY S.R. 109

Date April 19, 83

Township MARION

Weather CLEAR

Section 10 IN HAMLER

Temp. +30°

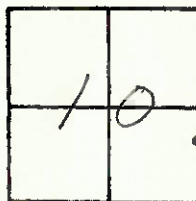
T3N, R7E

Personnel HOFFMAN

LOEHRKE

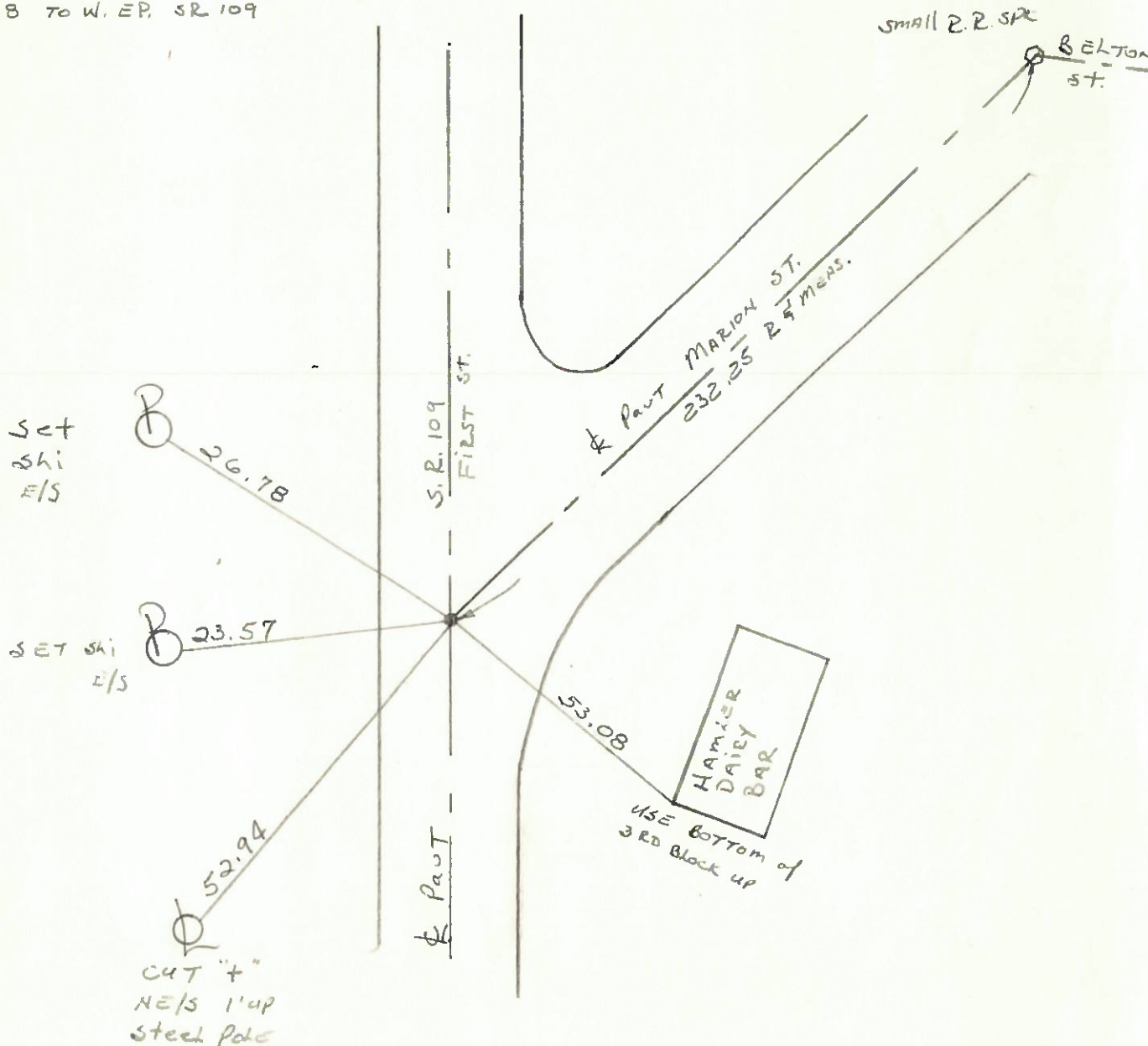
BARNHISEL

#9-C



Fd PK Nail 1" Below Surface
Set By BURNSIDE 11-7-73
ON & PAULTS
14.8 TO W. EP. SR 109

SLM 226 + 52
SET P.K./WASHER
9-19-83 SWH



OD.O.T. DISTRICT 2 SURVEY OFFICE

Sht. 8 of 8

County HENRY

Date 5-22-79

OK
4/19/83
S.W.H.

Township MARION

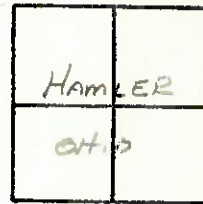
Weather CLEAR

Section HAMLER, OHIO

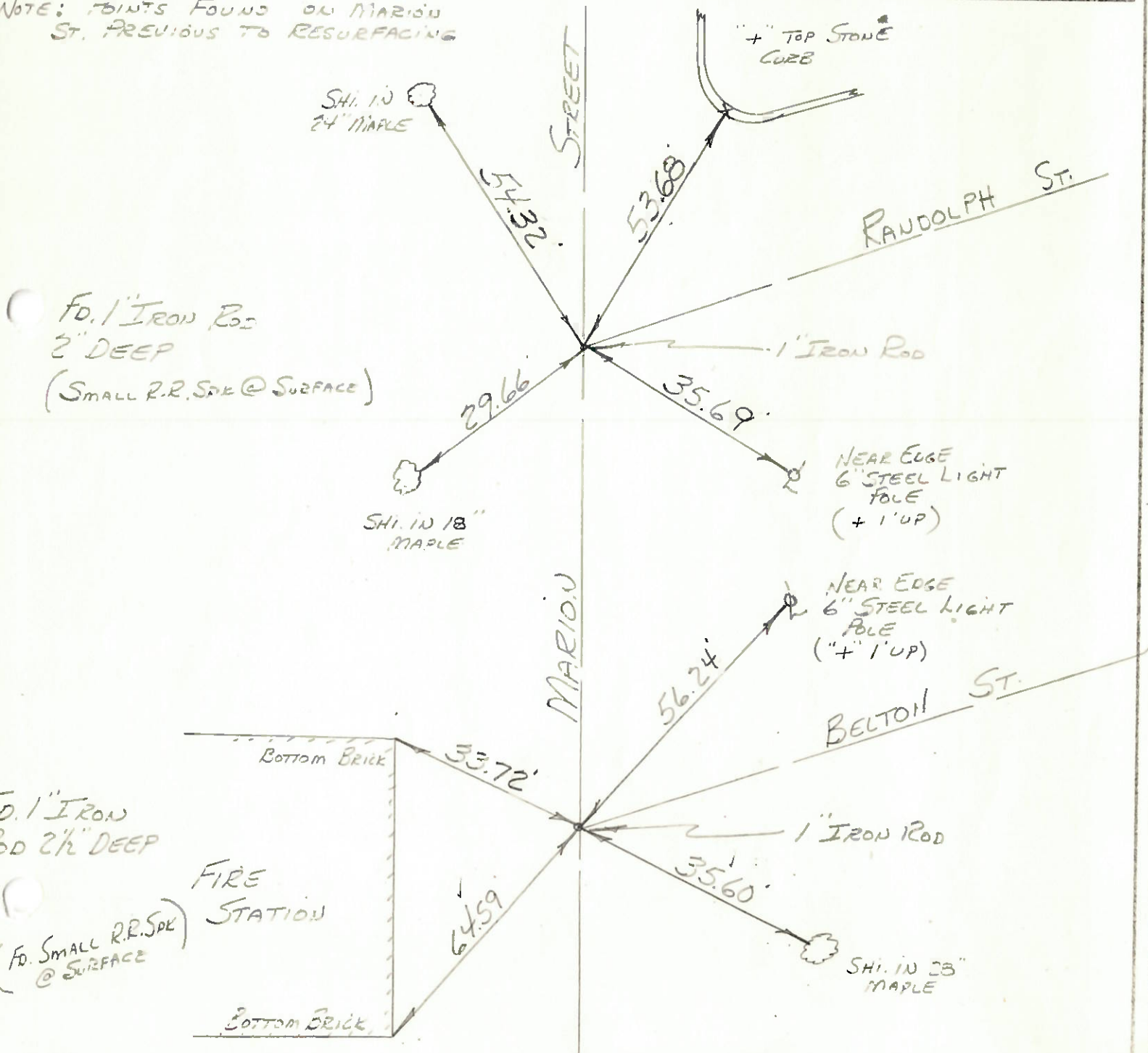
Temp. +54°

T3N, R7E

Personnel BURNSIDE

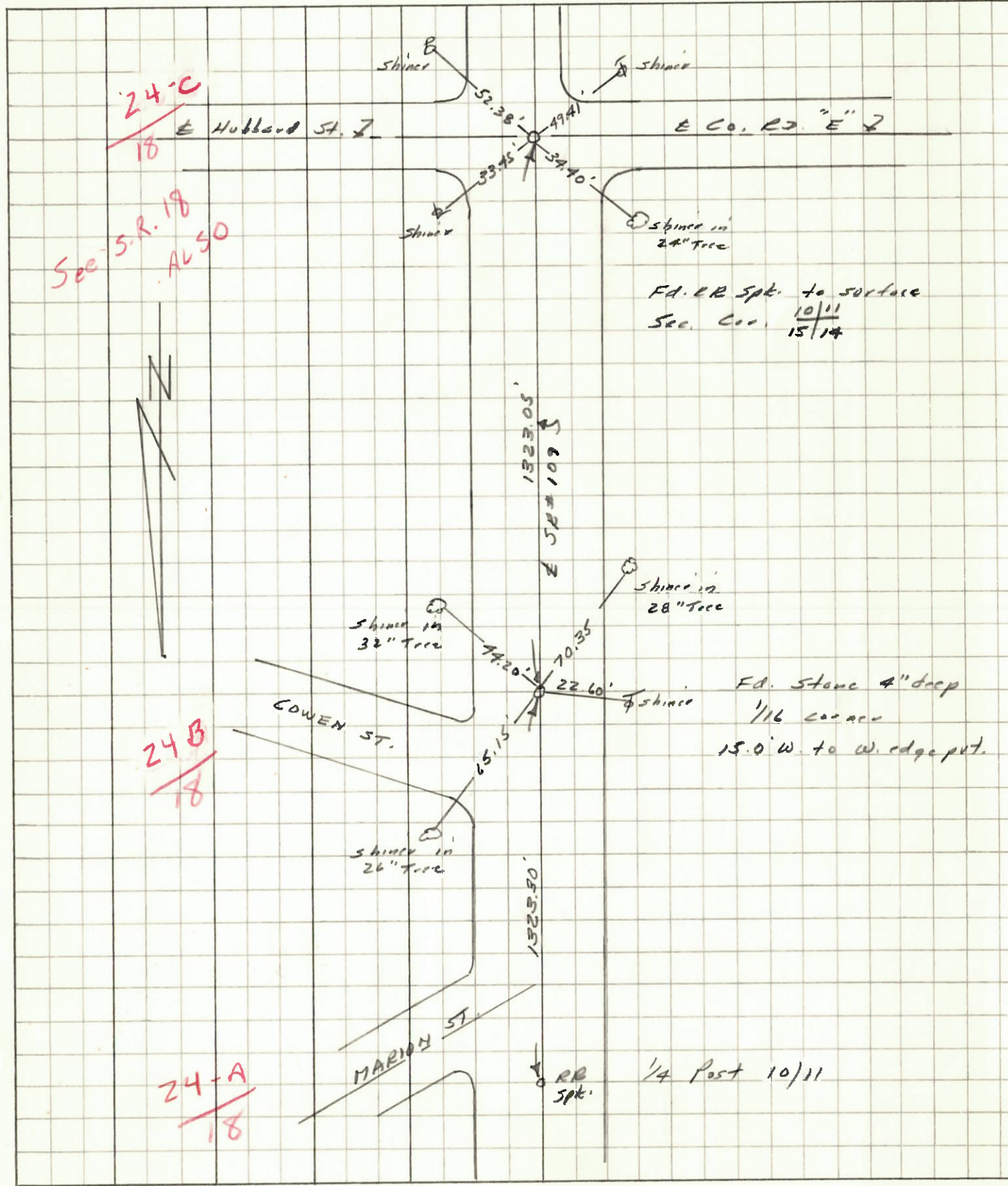


NOTE: FBINTS FOUND ON MARION ST. PREVIOUS TO RESURFACING



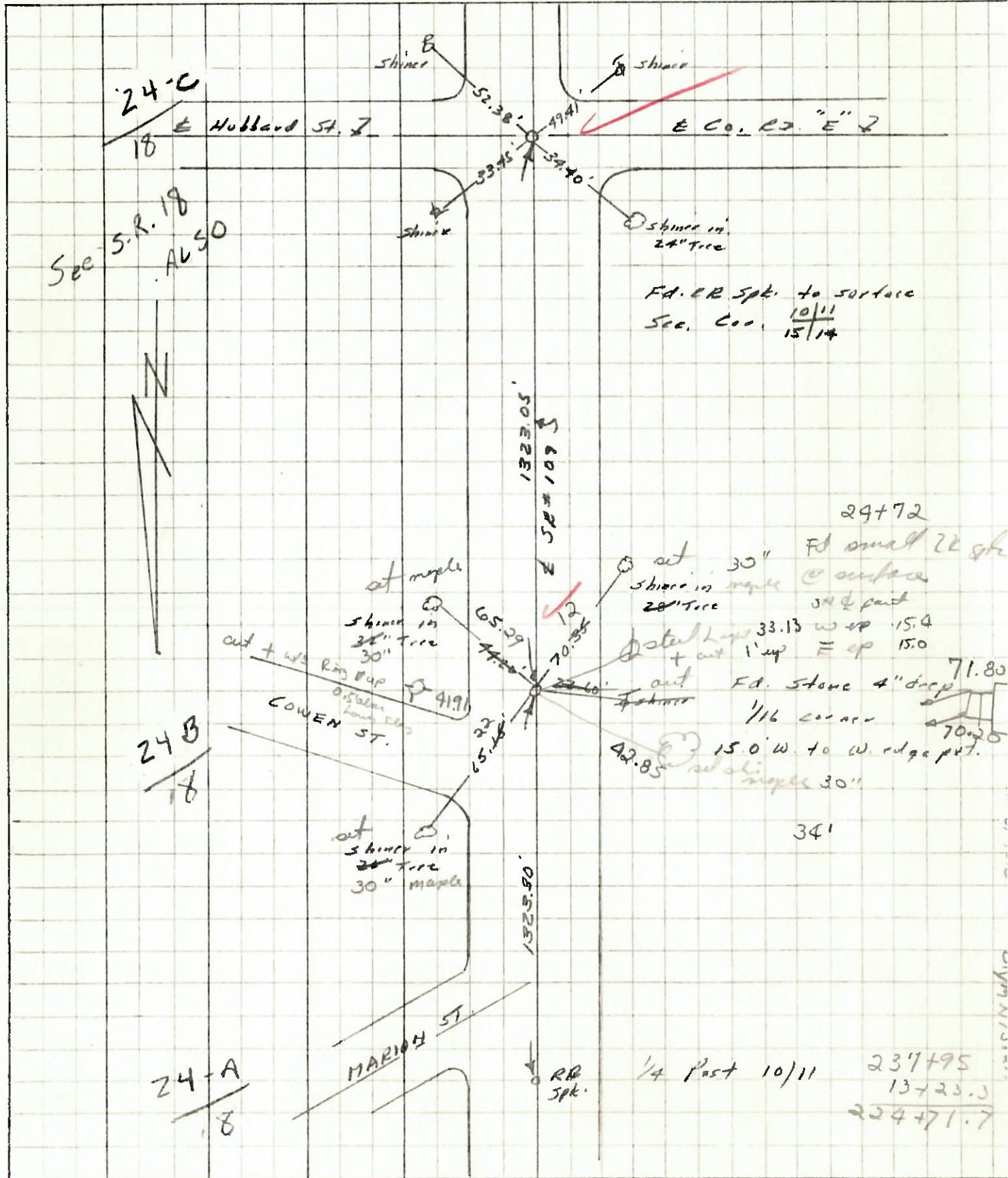
PERSONNEL	TITLE	PERSONNEL	TITLE	COUNTY	DATE
Stone				Henry	13 May 74
Michalek				S. R. # 109 110	WEATHER Cloudy
Dunn				SEC. Marion Twp.	TEMP. 55°
Curtis					

DESCRIPTION Refs. to Control Points LEFT CENTER LINE RIGHT JOB NO. 02999(6)



PERSONNEL	TITLE	PERSONNEL	TITLE	COUNTY	DATE
Steele				Henry	13 May 77
Michalak				S. R. # 109	WEATHER Cloudy
Donno				SEC. Marion Twp.	TEMP. 55°
Curtis					

DESCRIPTION Refs. to Control Points LEFT CENTER LINE RIGHT JOB NO. 029996



LD-5-(25M-2-59)

SHEET NO. _____

PERSONNEL	TITLE	PERSONNEL	TITLE
BURNSIDE			
SMITH			
MEAD			

COUNTY HENRY DATE 11-7-73

S. R. 18 E 109 HAMLER, O. WEATHER CLEAR

SEC. _____ TEMP. +42°

DESCRIPTION ALIGNMENT FOR MARION STREET JOB NO. 028280

