

O.D.O.T. DISTRICT 2 SURVEY OFFICE (USE ONLY)

PERSONNEL _____ REFERENCE NO. 9 D SHEET 15 OF 26

NOTES CANTERBURY DATE 05-05-1998 ROUTE SR 109
H.C. CANTERBURY WEATHER CLOUDY COUNTY HENRY
R.C. ROUSOS TEMP. 65° TOWNSHIP MARION
SECTION 10
T 3 N R 7 E

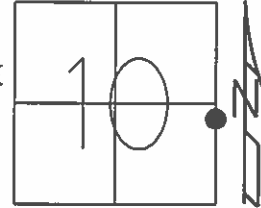
TYPE MONUMENT PK & WASHER

ON SURFACE - ~~BELOW~~ ON _____

~~LEFT~~ - ☉ PAV'T - ~~RIGHT~~ ON ☉ 109 - 20' S OF ☉ BALTIMORE
15.2' TO LT EDGE PAVEMENT

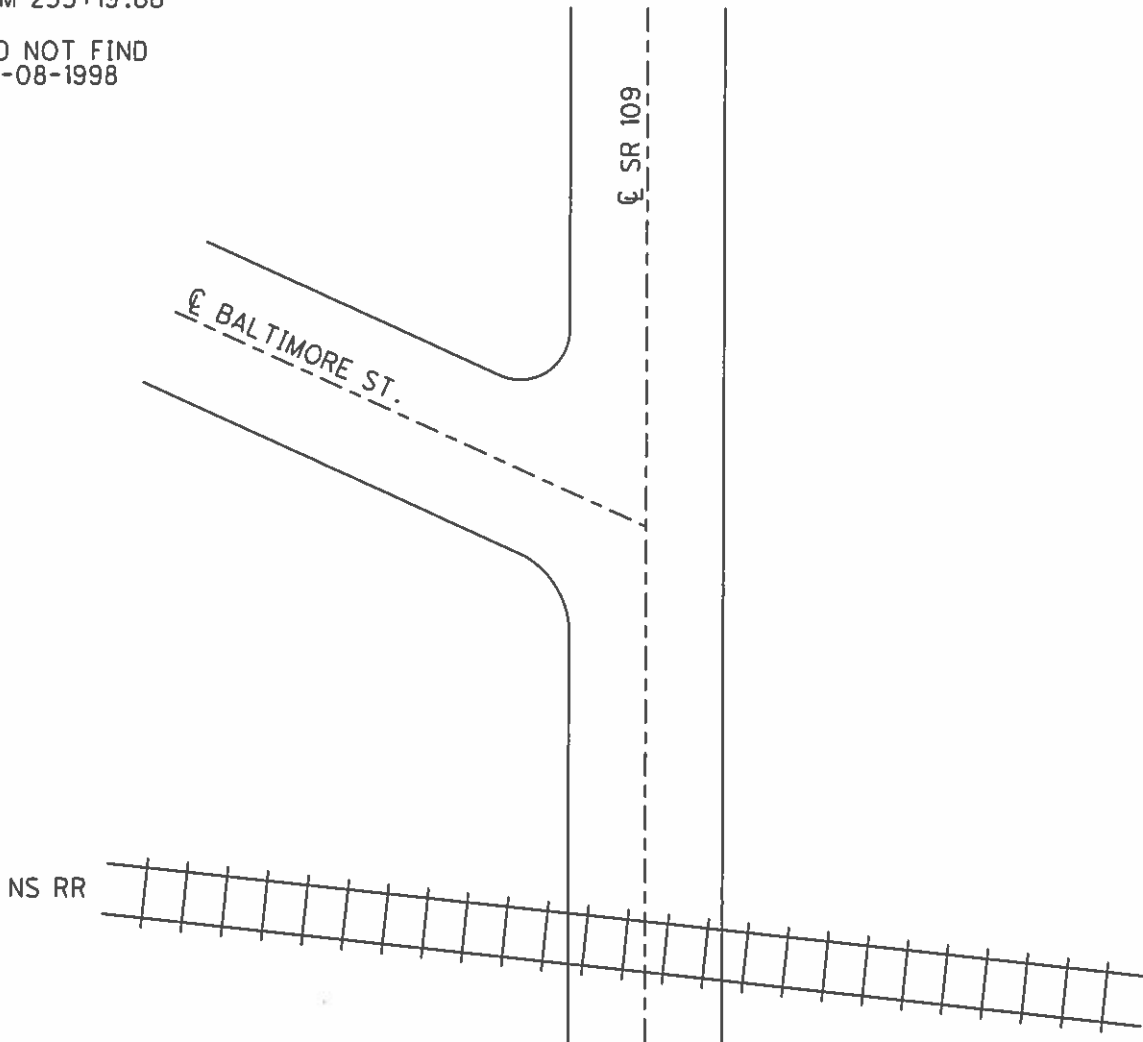
S.L.M. 233+79

Grid: Northing: _____ Easting: _____



REC: P.O.T.
SLM 233+19.66

DID NOT FIND
05-08-1998



O.D.O.T. DISTRICT 2 SURVEY OFFICE

PERSONNEL

REFERENCE NO. 9-D SHEET 12 OF 21

NOTES Canterbury

H.C. Canterbury

R.C. Rouse

DATE 5-8-98

WEATHER cloudy

TEMP. 65'

ROUTE 109

COUNTY HENRY

TOWNSHIP MARION

SECTION 10

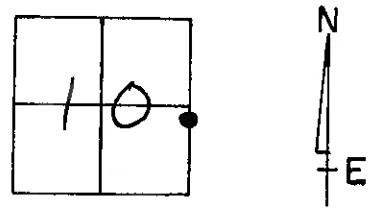
T3 N R 7 E

TYPE MONUMENT PK & WASHER

ON SURFACE - BELOW _____

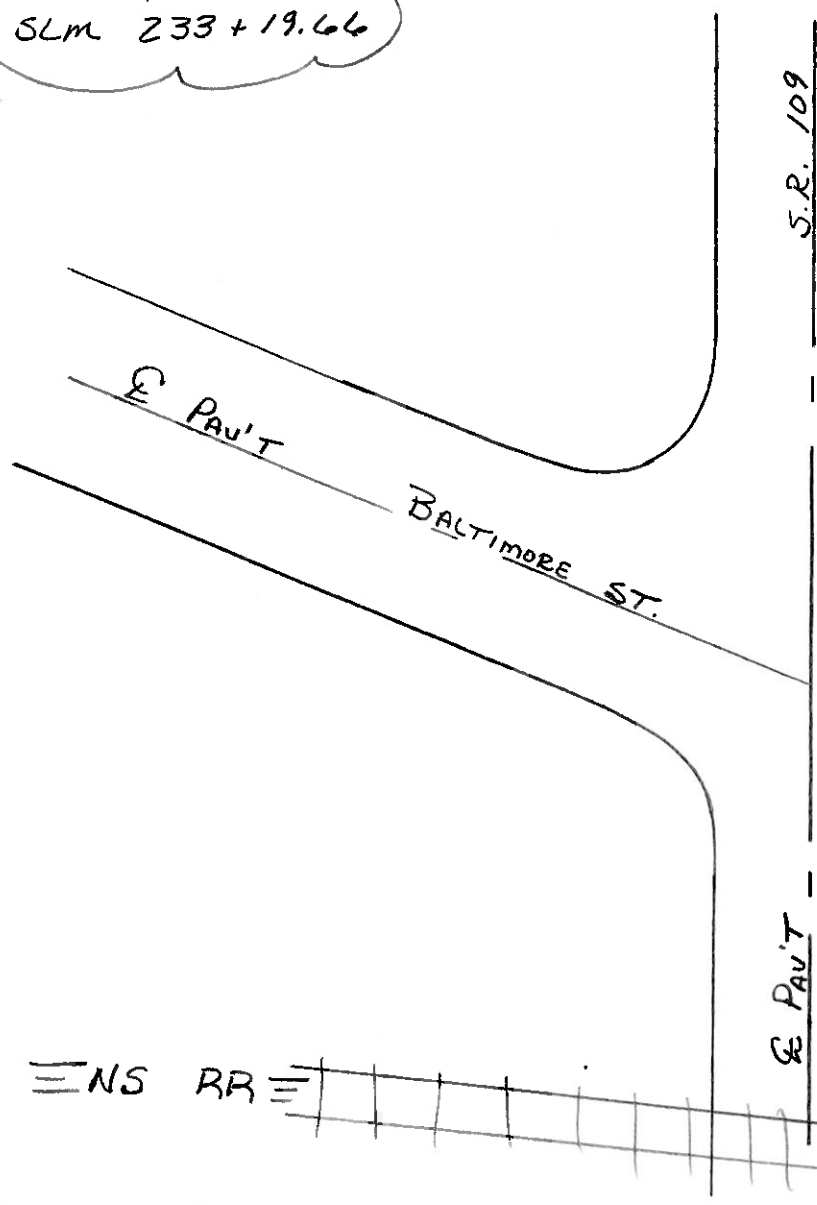
LEFT- & PAV'T. - RIGHT ON & 109 20'S of & part of
15.2 TO LT EDGE PAVEMENT OF PAVED PERM BALTIMORE ST.

S.L.M. 233+79



RECORD: P.O.T.
SLM 233+19.66

Did not find
5-8-98



O.D.O.T. DISTRICT 2 SURVEY OFFICE

PERSONNEL _____

REFERENCE NO. 9-0

SHEET 12 OF _____

NOTES BARLHISEL

H.C. _____

R.C. HOFFMAN

DATE 3-29-89

WEATHER cloudy-windy

TEMP. +44°

ROUTE 109

COUNTY HENRY

TOWNSHIP MARION

SECTION 10

T 3 N R 7 E

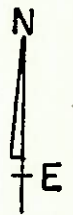
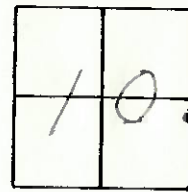
TYPE MONUMENT P.R. & WASHER

ON SURFACE - ~~BELOW~~ _____

LEFT - E PAV'T. - RIGHT ON E 109 20' S OF E PAV'T OF BALTIMORE

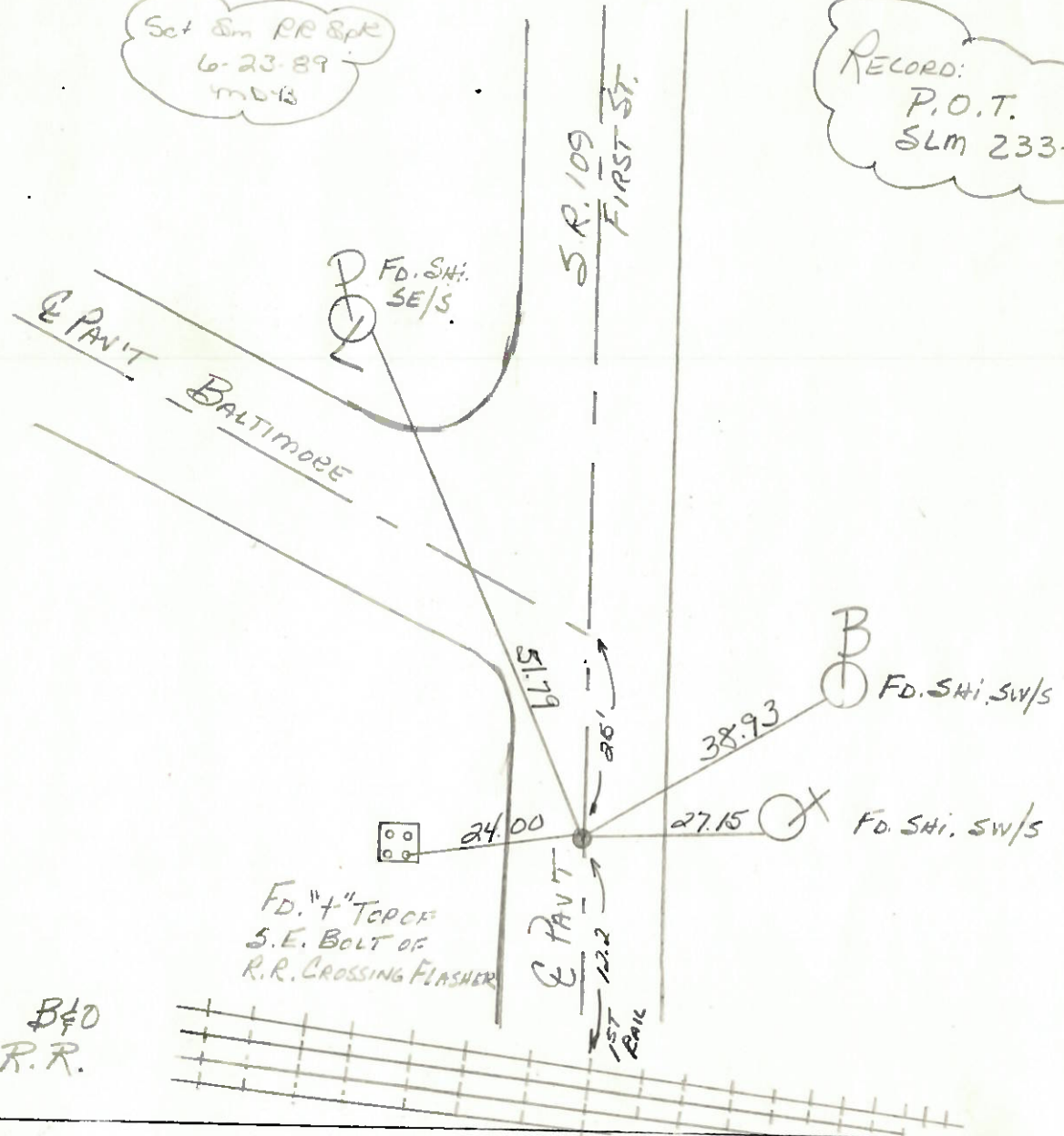
15.2 TO LT. EDGE PAVEMENT OF PAVED BERM

S.L.M. 233+79



Set Sm RR Spk
6-23-89
m.b.13

RECORD:
P.O.T.
SLM 233+19.66



O.D.O.T. DISTRICT 2 SURVEY OFFICE

SHEET _____ OF _____

County HENRY S.R. 109

Date April 19, 83

Township MARION

Weather CLEAR

Section 10 IN HAMLER

Temp. +34°

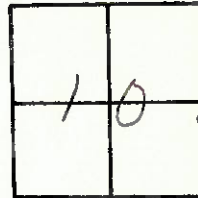
T3N, R7E

Personnel HOSPMAN

LOHRKE

BARNHISEL

#19-D

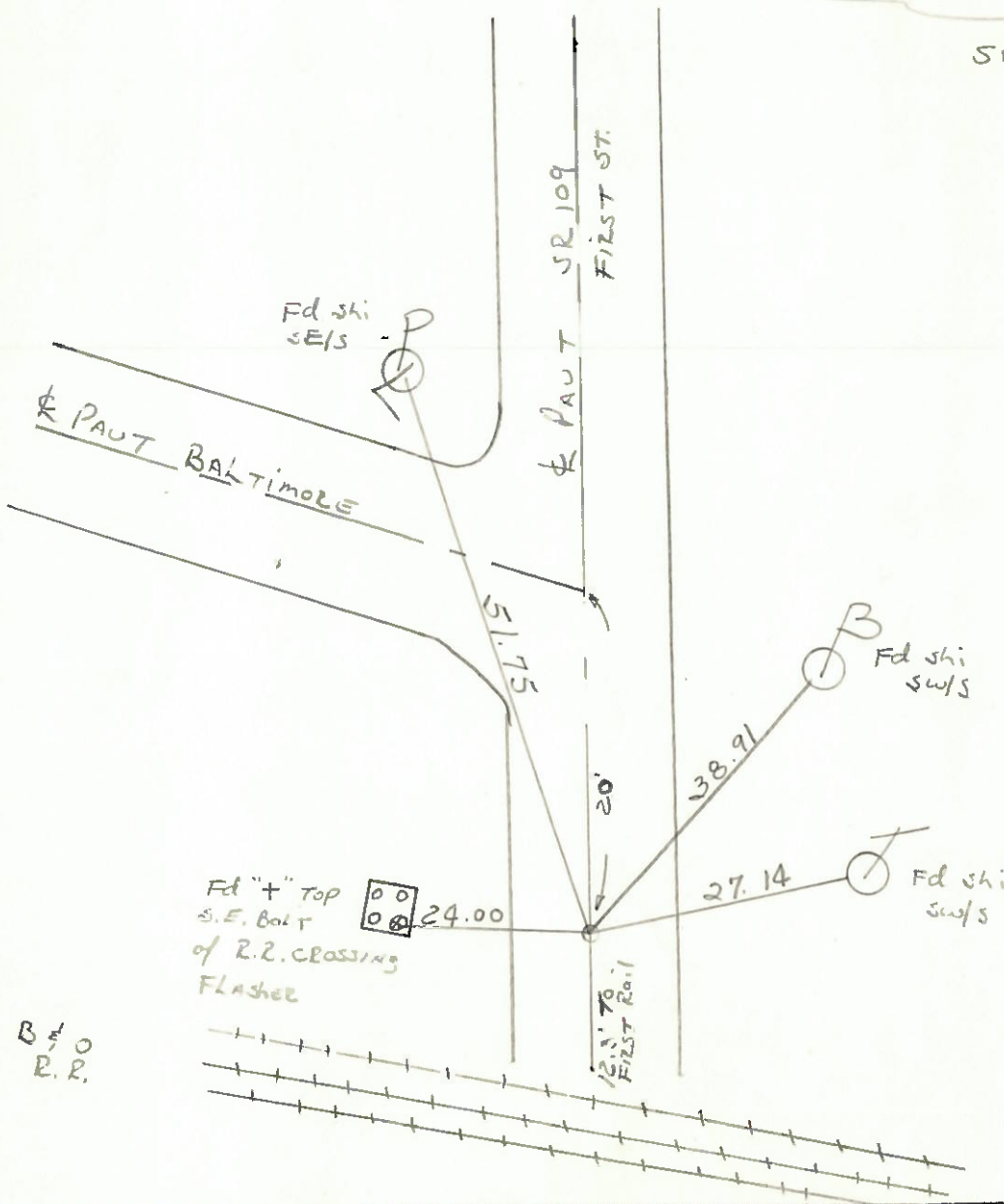


Fd P.K. Nail @ SURFACE
ON & PAUT
18.6' TO W.E.P.
12.6' TO E.E.P.

S.L.M. 233+36

Record:
P.O.T.
SLM 233+19.66

SET P.K./WASHER
9-19-83 SWH

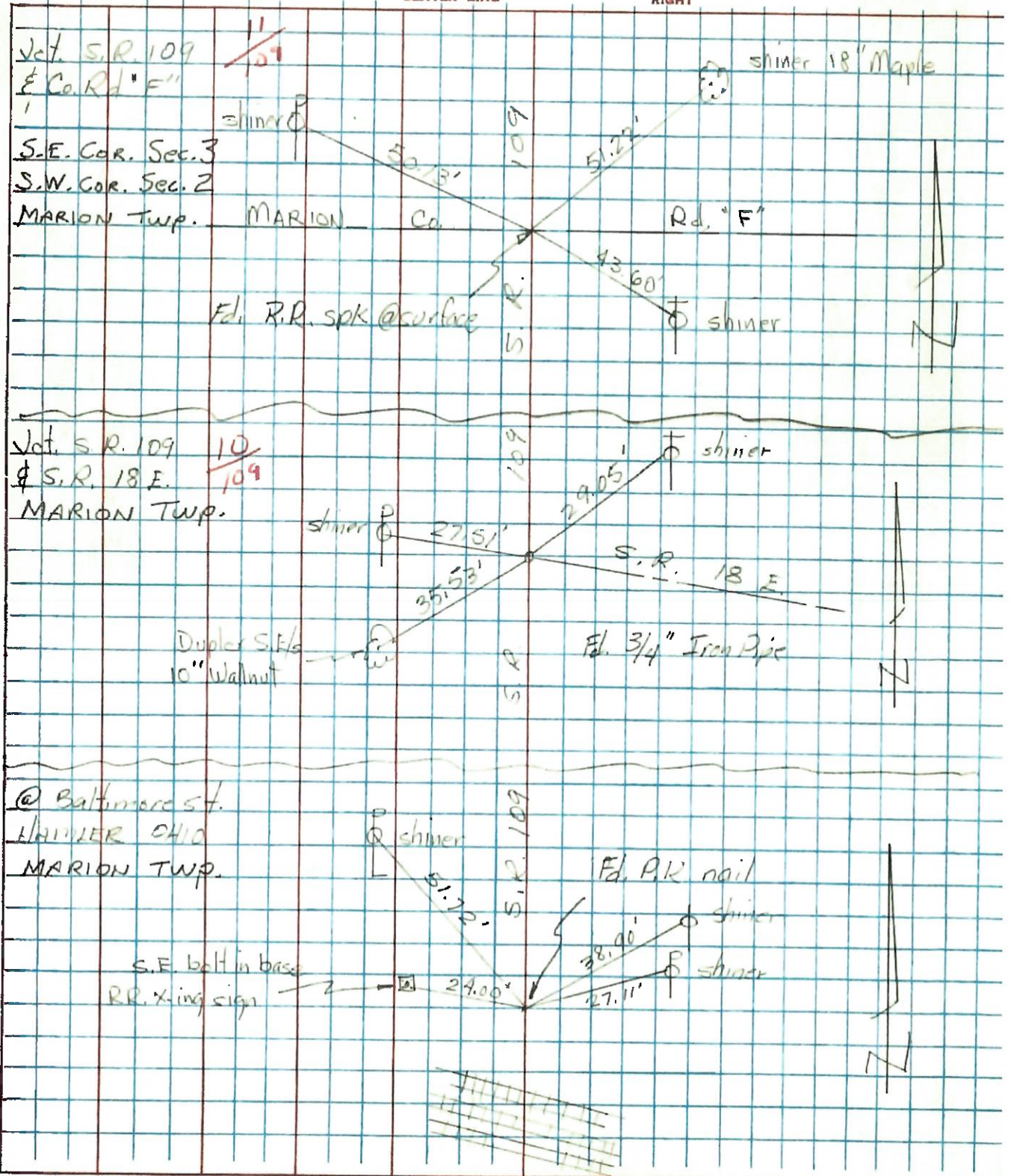


B & O
R.R.

PERSONNEL	TITLE	PERSONNEL	TITLE
Tomsic			
Neuser			
Sanata			
Yanya			

COUNTY HENRY DATE Oct. 31, 1973
 S. R. 109 WEATHER _____
 SEC. MARION TWP. TEMP _____

DESCRIPTION _____ LEFT _____ CENTER LINE _____ RIGHT _____ JOB NO. _____



PERSONNEL TITLE PERSONNEL TITLE

BURNEISE
SMITH
KNOWSKI.

COUNTY HENRY DATE 8-7-72

S. R. 109 WEATHER SHOWERS

SEC. HAMLER TEMP +70°

DESCRIPTION CONTROL TIES LEFT CENTER LINE RIGHT JOB NO. 028780

