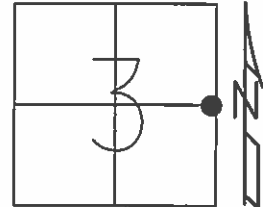


O.D.O.T. DISTRICT 2 SURVEY OFFICE (USE ONLY)

PERSONNEL _____ REFERENCE NO. 12 SHEET 19 OF 26
 NOTES CANTERBURY DATE 08-18-1998 ROUTE SR 109
 H.C. ROUSOS WEATHER PRTLY CLDY COUNTY HENRY
 R.C. BARNHEISEL TEMP. +80°F TOWNSHIP MARION
 _____ SECTION 3
 _____ T 3 N R 7 E

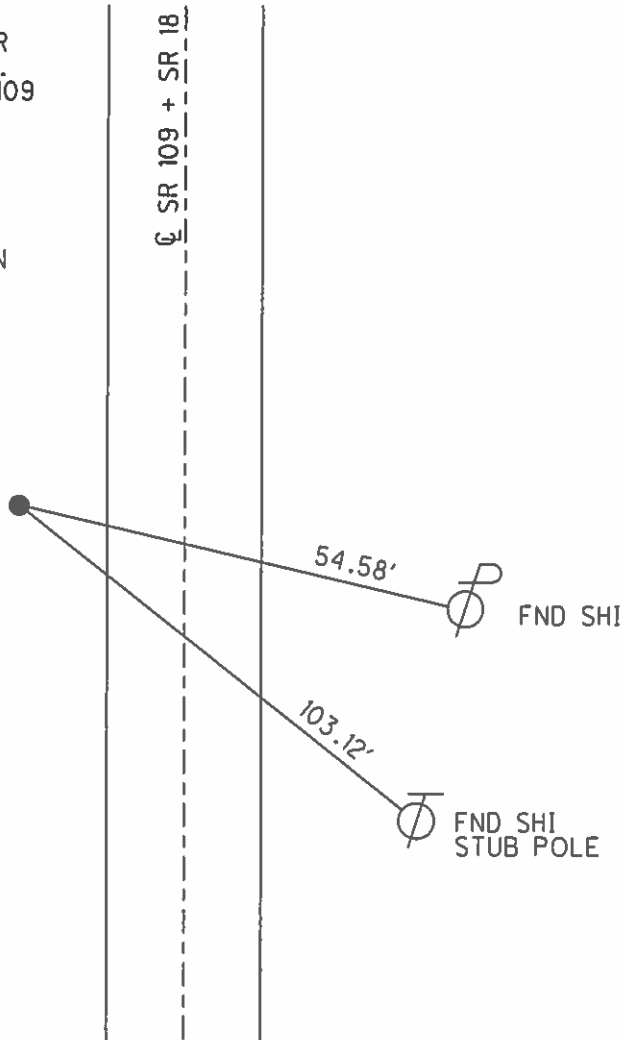
TYPE MONUMENT STONE W/ DEPRESSION @ CTR
 ON SURFACE - ~~BELOW~~ ON _____
 LEFT - ~~C PAVT~~ - ~~RIGHT~~ 20.4'
10.25' TO LT EDGE PAVEMENT
 S.L.M. 551+81



Grid: Northing: _____ Easting: _____

REC:
 FND STONE/DEPRESSION @ CTR
 @ SURFACE 10.25' W OF W E.P.
 20.4' W OF C PVMT. SR 18 & 109
 SLM = HEM 18 - STA 551+80

NOTE:
 FND STONE BUT UNABLE TO
 DETERMINE WHAT WAS USED ON
 STONE, OLD TIES DON'T HELP
 WITH DEFINING A GOOD POINT



O.D.O.T. DISTRICT 2 SURVEY OFFICE

PERSONNEL _____

REFERENCE NO. 12

SHEET 15 OF 21

NOTES CANTERBURY

H.C. Rousar

R.C. BARNISEL

DATE 8-18-98

WEATHER Partly cly.

TEMP. 80°F

ROUTE 109+18

COUNTY Henry

TOWNSHIP Marion

SECTION 3

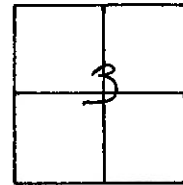
T. 3 N. 7 E.

TYPE MONUMENT Stone w/ Depression @ ctr
 ON SURFACE - BELOW Surface

LEFT - ¢ ~~BAV.T.~~ = RIGHT - 204' L of ¢ Pmt

10.25' L TO L EDGE PAVEMENT

S.L.M. 16+824.90 (MEASURED SS1+81)



290+40/5.50

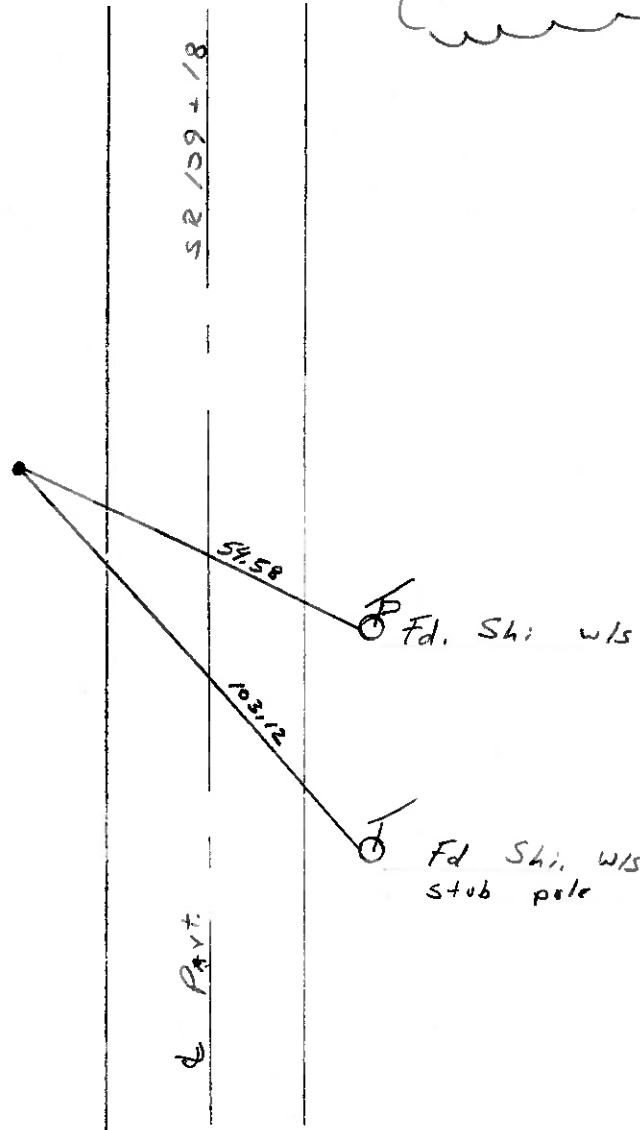
OFF PAVEMENT

RECORD:

FND Stone/DEPRESSION @ CTR
@ SURFACE 10.25' W. of W. P.
20.9' W. of ¢ Pmt. SR 18@109
SLM = HEX 18-STA 551+80

NOTE:

FOUND STONE BUT UNABLE TO
DETERMINE WHAT WAS USED ON
STONE, OLD TIES DON'T HELP WITH
DEFINING A GOOD POINT



Q.D.O.T. DISTRICT 2 SURVEY OFFICE

SHEET _____ OF _____

County HENRY S.R. 18 / 109

Date 4/25/83

Township MARION

Weather CLEAR

Section 3

Temp. +60°

T3N, R7E

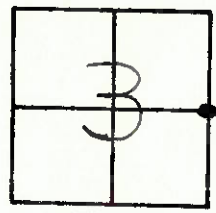
Personnel HOFFMAN

LOEHRKE

HOUSEHOLDER

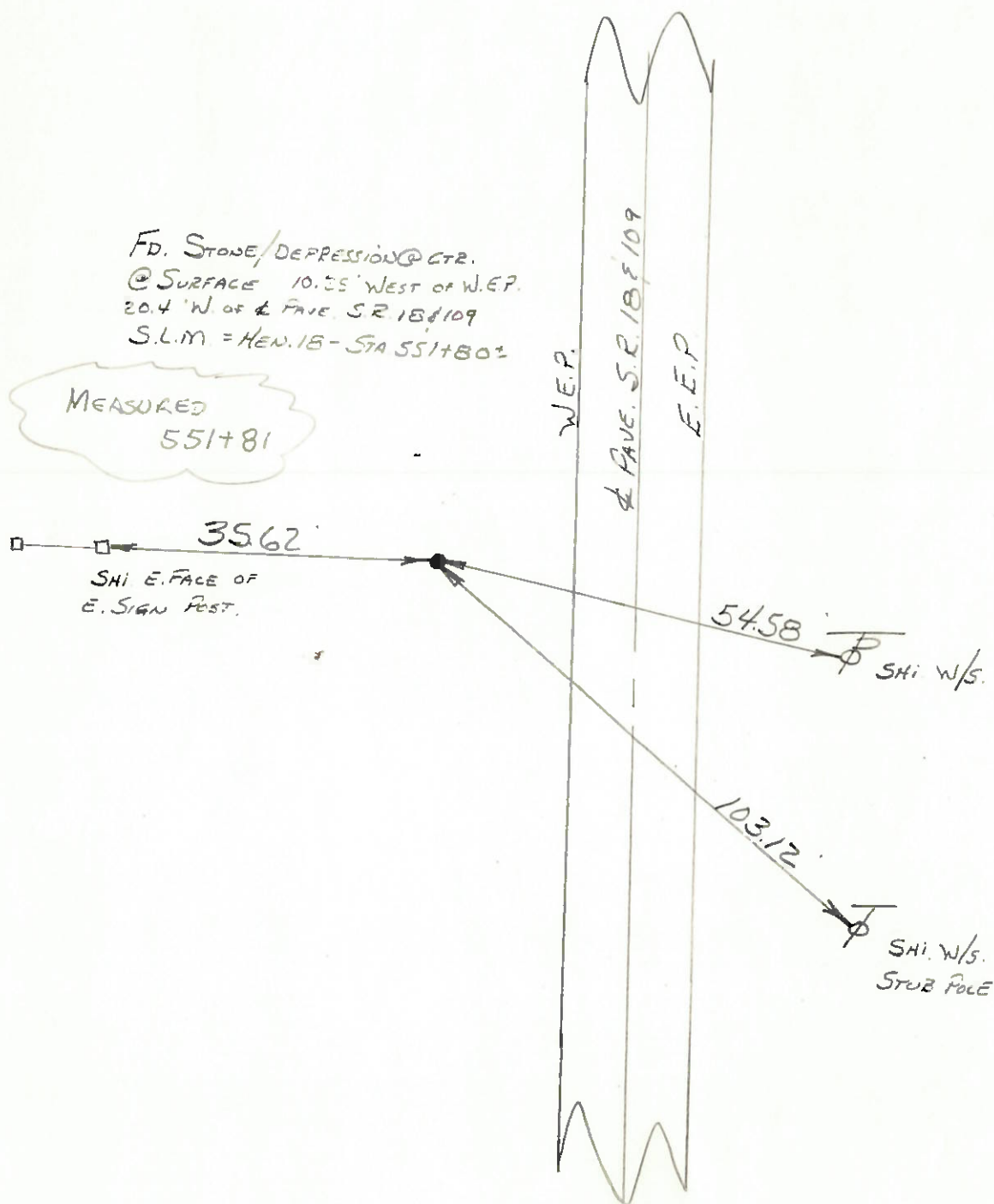
BARNHISEL

#12
SR. 109



Fd. Stone/DEPRESSION @ CTR.
@ SURFACE 10.25' WEST OF W.E.P.
20.4' W. of & FACE. S.R. 18/109
S.L.M. = HEN. 18 - STA 551+80.2

MEASURED
551+81



PERSONNEL TITLE PERSONNEL TITLE

Tomsic _____

Neuser _____

Granata _____

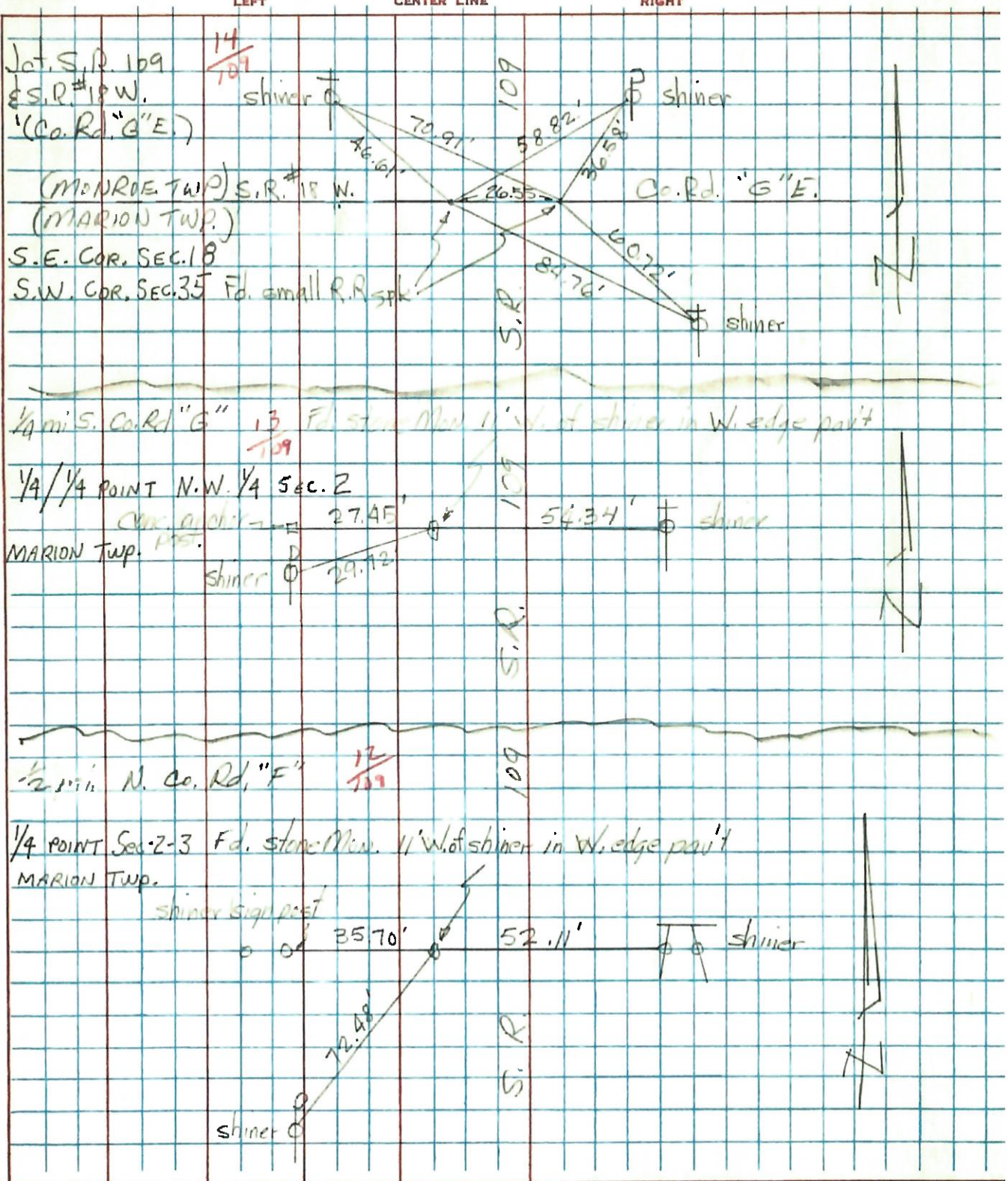
Van ya _____

COUNTY WENDE DATE Oct. 31, 1973

S. R. 109 WEATHER _____

SEC. 17, 18, 19 TEMP _____

DESCRIPTION LEFT CENTER LINE RIGHT JOB NO.



PERSONNEL TITLE PERSONNEL TITLE

BURNSIDE

COUNTY HENRY

DATE 5-11-72

POWERS

S. R. 13E109

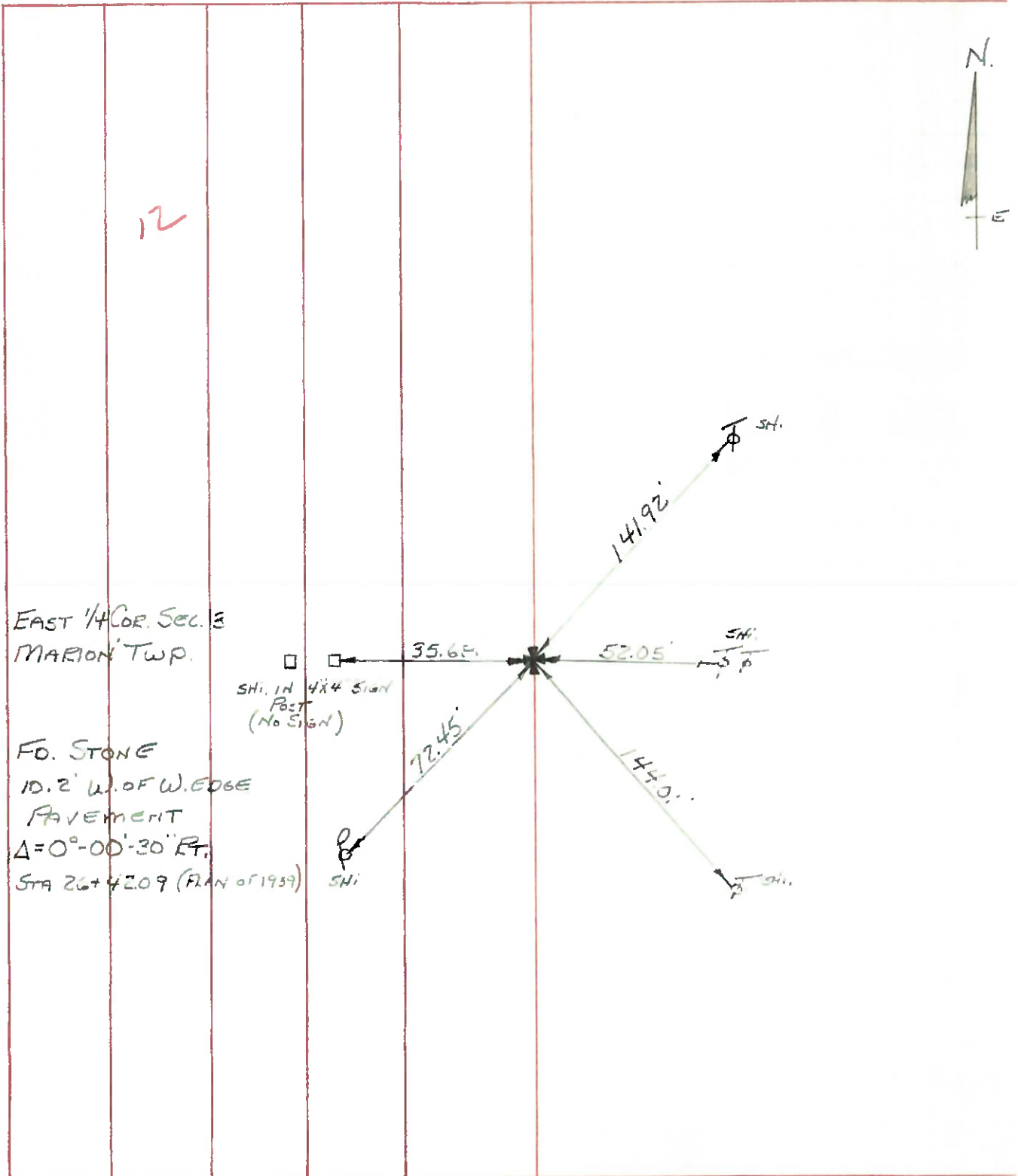
WEATHER CLEAR

SEC. _____

TEMP. +63°

DESCRIPTION CONTROL POINTS N. OF HAMILER

JOB NO. _____



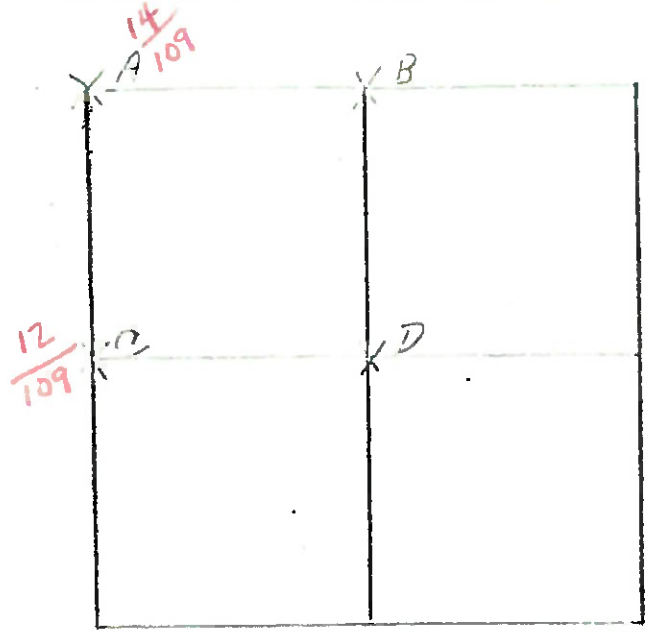
COUNTY HENRY S.R. 109

T-3-N, R-7-E

TOWNSHIP MONROE

SECTION 2

6-11-79
RW, 35, 61



A - FOUND IRON BOLT 0.10' SOUTH AND 0.11' WEST OF HIGH POINT OF STONE (8" X 14" X 1 1/2") 14" BELOW ROAD SURFACE. FOUND WOOD STAKE 1/5 STONE. PLACED CENTER PUNCHED R.R. SPIRE ON SURFACE OVER HIGH POINT OF STONE. P.K.'S 6' NORTH AND WEST.

- 70.88' W.N.W. TO SHINER ^{SE}/₅ BRACE POLE
- 36.44' N.E. TO SHINER ^{SW}/₅ POWER POLE
- 60.65' E.S.E. TO SHINER ^{NW}/₅ TELEPHONE MARKER POLE
- 52.73' W.S.W. TO "4" N.E. CORNER CONC. BRIDGE WALL
- 36.60' W. TO S.W. CORNER SEC. 35, MONROE TWP.
- 6-11-79 RW, JT, 61°

- B - FOUND IRON PIN ANGLED OVER TWO STONES. STONE #1 USED AS A BASE AND IS (10" X 15" X 5") 19" BELOW ROAD SURFACE. CORNER STONE SETS ON BASE STONE AND IS (5" X 8" X 11") 8" BELOW ROAD SURFACE. REMOVED IRON PIN AND PLACED CENTER PUNCHED R.R. SPIRE ON SURFACE 0.49' SOUTH OF HIGH POINT OF STONE ON SOUTH LINE OF SEC. 35; MONROE TWP. P.K.'S 16' N. W. STONE IS 8.9' S. OF N. EDGE OF 18' PAVEMENT
- 43.97' N.W. TO SPIRE ^S/₅ TELEPHONE POLE
 - 39.25' S.S.E. TO DUPLEX ^W/₅ POWER POLE
 - 45.35' S.W. TO IRON PIN ON SOUTH DITCH BACK
 - 34.30' W. TO S 1/4 POST SEC. 35, MONROE TWP.

PERSONNEL TITLE PERSONNEL TITLE

COUNTY Henry

DATE _____

S. R. #109

WEATHER _____

SEC. _____

TEMP. _____

DESCRIPTION

LEFT

CENTER LINE

RIGHT

JOB NO. _____

12

#61 Stone on-fence line
E 1/4 S Sec. #3
Marion, Twp.

54.64 E. Bolt in stump
51.70 E. Spk. in Tele. Pole
28.84 W. Spk. in Cor. Post

13

#62 Stone on-fence line
E 1/4 of N.E. 1/4
Sec. #3 Marion, Twp.

55.65 N.E. 1st Post N. Cor. Post
55.20 E. Spk. Cor. Post
28.84 S.W. Spk. P. Pole

14

NE. Cor. Sec. #3 Marion, Twp.
#63 Iron Bolt in Post
36.87 N.E. to Stake
20.73 S.W. to Stake
20.08 S.E. to Stake
26.53 W. to Bolt in Cor. Post
21.80 S.W. to Stake
28.87 N.E. to Stake

57.40 N.W. to N.E. Cor. of N. Bridge Rail.
52.40 S.W. to N.E. Cor. of S. Bridge Rail.
26.58 Distance between Stones. Monroe Twp.
37.85 N.W. to S.E. cor. of N. Bridge Rail
30.11 S.W. to N.E. Cor. of S. Bridge Rail.