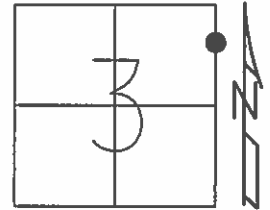


O.D.O.T. DISTRICT 2 SURVEY OFFICE (USE ONLY)

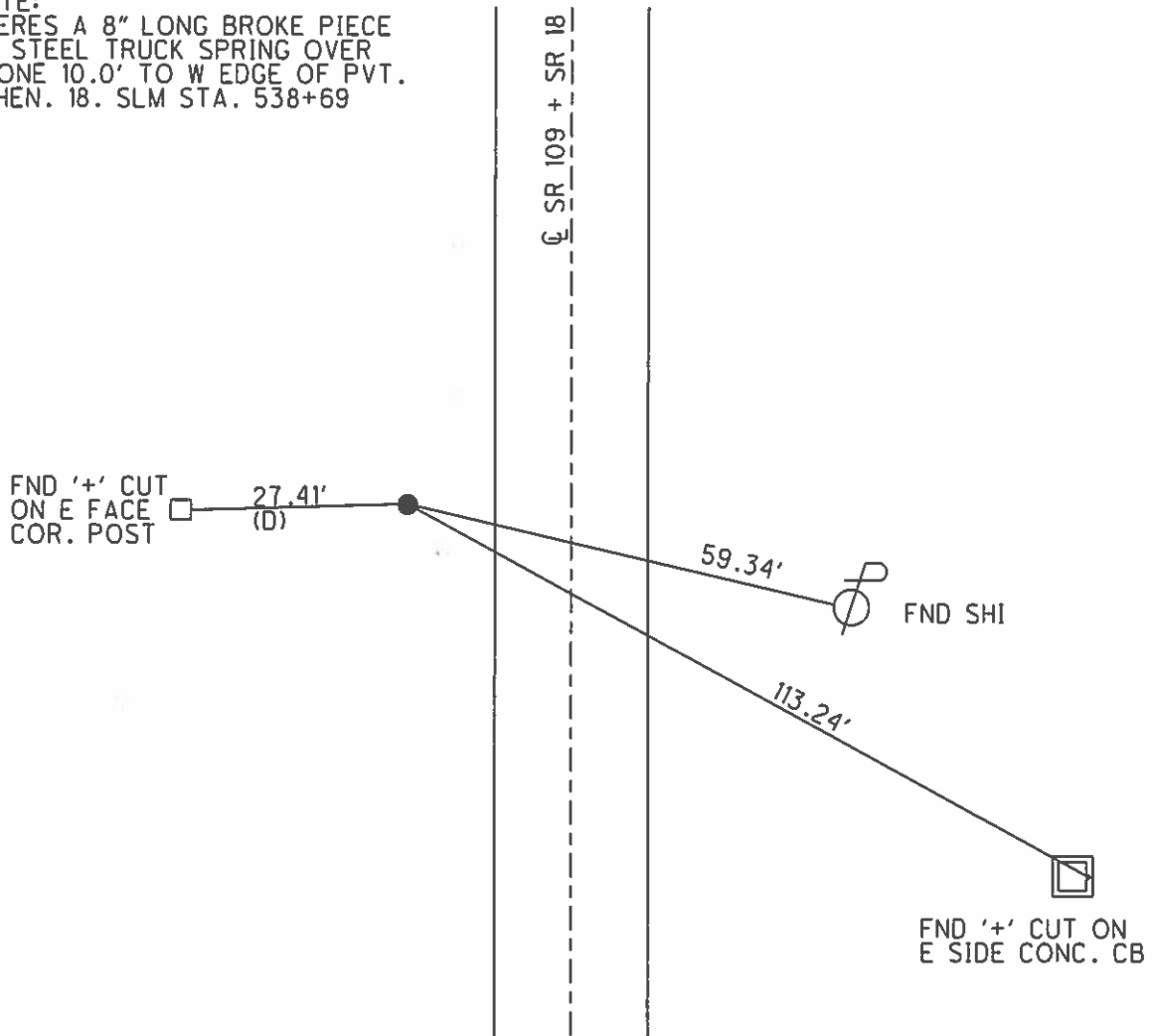
PERSONNEL _____ REFERENCE NO. 13 SHEET 20 OF 26
 NOTES CANTERBURY DATE 08-18-1998 ROUTE SR 109
 H.C. ROUSOS WEATHER PRTLY CLDY COUNTY HENRY
 R.C. BARNHISEL TEMP. +80°F TOWNSHIP MARION
 _____ SECTION 3
 _____ T 3 N R 7 E

TYPE MONUMENT STONE
~~ON SURFACE~~ - BELOW 2"
 LEFT - ~~C PAV'T~~ - RIGHT 19.7'
10.0' TO LT EDGE PAVEMENT
 S.L.M. 538+71



Grid: Northing: _____ Easting: _____

NOTE:
 THERES A 8" LONG BROKE PIECE
 OF STEEL TRUCK SPRING OVER
 STONE 10.0' TO W EDGE OF PVT.
 & HEN. 18. SLM STA. 538+69



O.D.O.T. DISTRICT 2 SURVEY OFFICE

PERSONNEL _____

REFERENCE NO. 13

SHEET 16 OF 21

NOTES Canterbury

H.C. Rousos

R.C. Barnhisel

DATE 8-18-98

WEATHER Pty. Cls

TEMP. +80°F

ROUTE 109+18

COUNTY HENRY

TOWNSHIP Marion

SECTION 3

T3 N R 2 E

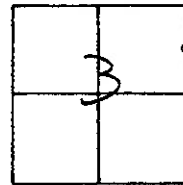
TYPE MONUMENT STONE

ON SURFACE - BELOW 2" Below

LEFT - ~~C~~ PAVT. - RIGHT 19.7' L of E Pmt

10.0' TO L EDGE PAVEMENT

S.L.M. 16+424 SLK (MEASURED Sta 528+71)



Note:

303+66/5.75

There is a 8" long Broke Piece of Steel Truck Spring OVER Stone 10.0' TO W. EDGE OF P.M.T. & 19.7' W. OF E P.M.T. Hen. 18. SLM. Sta. 528+69+

OFF PAVEMENT

FND 4' cut ON E. FACE Cor. Post

□ 27.41' (D)

59.34'

○ FND. SH. 4/8

113.25'

□ Fnd. 4' cut on East side CONC. CB.

L PAVMT.

SR 109+18

DRAWN BY TR

Q.D.O.T. DISTRICT 2 SURVEY OFFICE

SHEET _____ OF _____

County HENRY S.R. 18E109

Township MARION

Section 3

T3N, R7E

Personnel HOFFMAN

LOEHRKE

HOUSEHOLDER

BARNHISEL

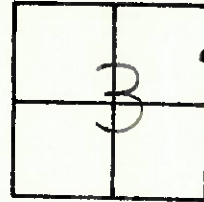
13

SR.109

Date 4/25/83

Weather CLEAR

Temp. +60°



FD. STONE 2' BELOW SURFACE,
PLACED 8" LONG, BROKEN PIECE
OF STEEL TRUCK SPRING
OVER STONE.
10.0' TO WEDGE PAVE. &
19.7' WEST OF & PAVE.
HEN. 18-SL.M STA 538+69±

W.E.P.

& PAVE 52.18E109

E.E.P.

27.41
(D)

" + ON E. FACE CONC.
COR. POST.

59.16

" + SH. W/SIDE

113.77
(D)



" + ON EAST SIDE
CONC. C.B.

MEASURED
STA. 538+71

PERSONNEL TITLE PERSONNEL TITLE

Tomsic _____

Neuser _____

Granata _____

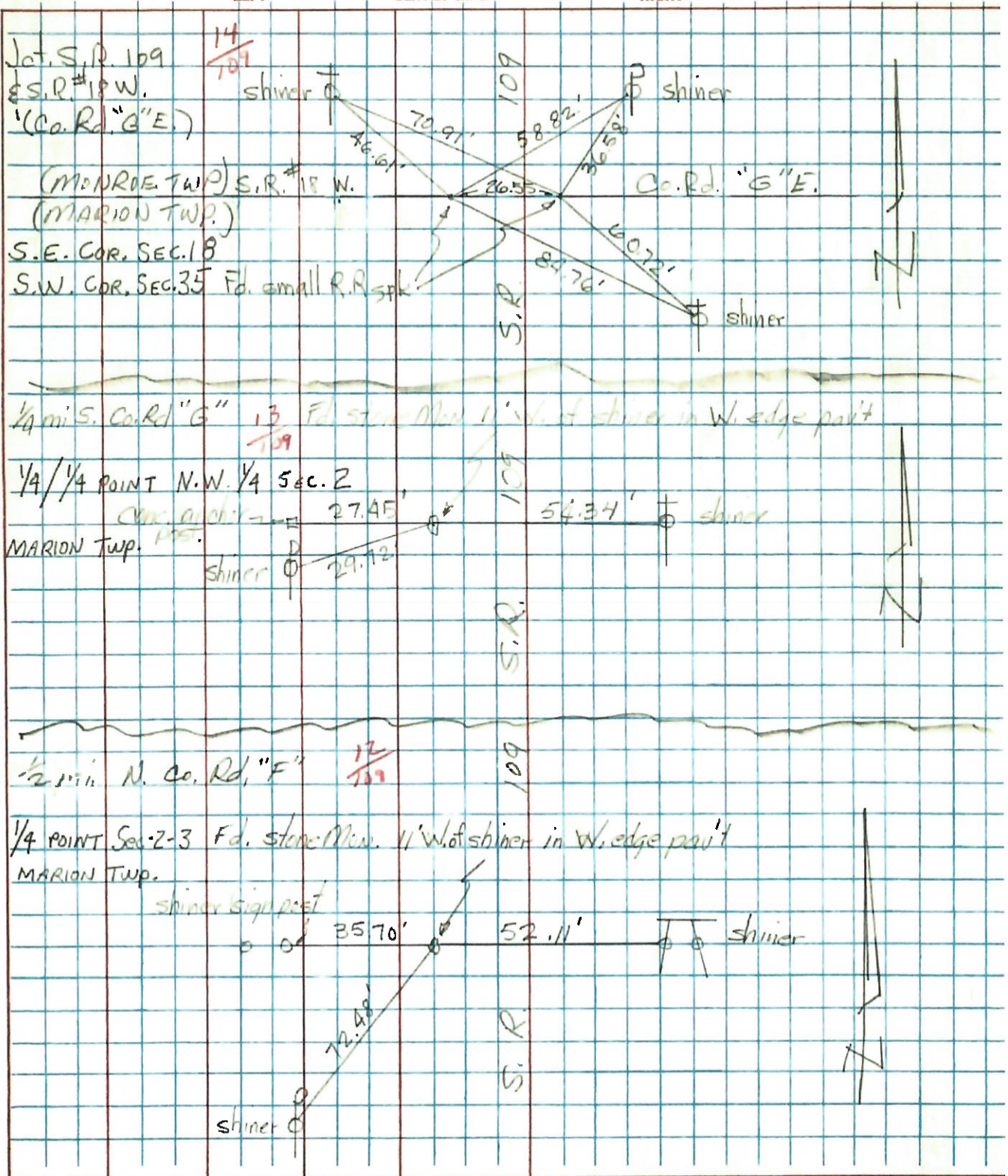
Van ya _____

COUNTY WENDE DATE Oct. 31, 1973

S. R. 109 WEATHER _____

SEC. 17, 18, 19 TEMP _____

DESCRIPTION LEFT CENTER LINE RIGHT JOB NO.



PERSONNEL BURNSIDE TITLE _____ PERSONNEL _____ TITLE _____ COUNTY HENRY DATE 5-11-72

POWERS _____ S. R. 185 109 WEATHER CLEAR

DESCRIPTION CONTROL POINTS NORTH OF HAMLER LEFT CENTER LINE RIGHT JOB NO. _____ SEC. _____ TEMP. _____

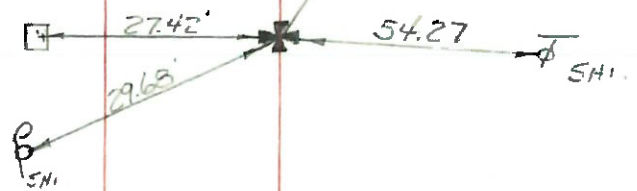
13

13

E 1/4 COR. OF THE N.E. 1/4
SEC. 3
MARION TWP.

FOUND STONE ON
LINE 10' W. OF W
EDGE PAVEMENT
NO ANGLE
STA. 39+52.7 (PLAN OF 1939)

4" EAST SIDE CONC.
COR. PCT



PERSONNEL TITLE PERSONNEL TITLE

COUNTY Henry

DATE _____

S. R. #109

WEATHER _____

SEC. _____

TEMP. _____

DESCRIPTION

LEFT

CENTER LINE

RIGHT

JOB NO. _____

12

#61 Stone on-fence line
E 1/4 S Sec. #3
Marion, Twp.

54.64 E. Bolt in stump ✓
51.70 E. Spk. in Tele. Pole
28.84 W. Spk. in Cor. Post

13

#62 Stone on-fence line
E 1/4 of N.E. 1/4
Sec. #3 Marion, Twp.

55.65 N.E. 1st Post N. Cor. Post ✓
55.20 E. Spk. Cor. Post
28.84 S.W. Spk. P. Pole

14

NE. Cor. Sec. #3 Marion, Twp.
#63 Iron Bolt in Post
36.87 E. to Stake
20.73 S.W. to Stake
20.08 S.E. to Stake
26.53 W. to Bolt in Cor. Post
21.80 S.W. to Stake
28.87 N.E. to Stake

57.40 N.W. to N.E. Cor. of N. Bridge Rail ✓
52.40 S.W. to N.E. Cor. of S Bridge Rail
26.58 Distance between Stones Monroe Twp.
37.85 N.W. to S.E. cor. of N. Bridge Rail
30.11 S.W. to N.E. Cor. of S. Bridge Rail