

O.D.O.T. DISTRICT 2 SURVEY OFFICE (USE ONLY)

PERSONNEL _____ REFERENCE NO. 14 SHEET 21 OF 25
 NOTES NIESE DATE 3/12/21 ROUTE SR 109
 H.C. RHOADES WEATHER SUNNY COUNTY HENRY
 R.C. _____ TEMP. 50° TOWNSHIP MONROE
 DWG BY NIESE PID PAVE TRAIN SECTION 34
 T 4 N R 7 E

TYPE MONUMENT LG.R.R.SPIKE

~~ON SURFACE~~ - BELOW 1"

OFFSET \odot PAVEMENT 20.5' LT : ~~RT~~

- TO - EDGE PAVEMENT

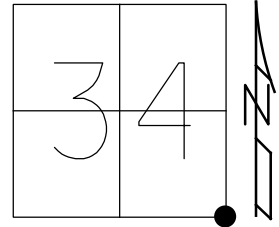
STATION: 317+60

HORIZ.DATUM: NAD83(2011)

GEOID: NAVD88 2012A

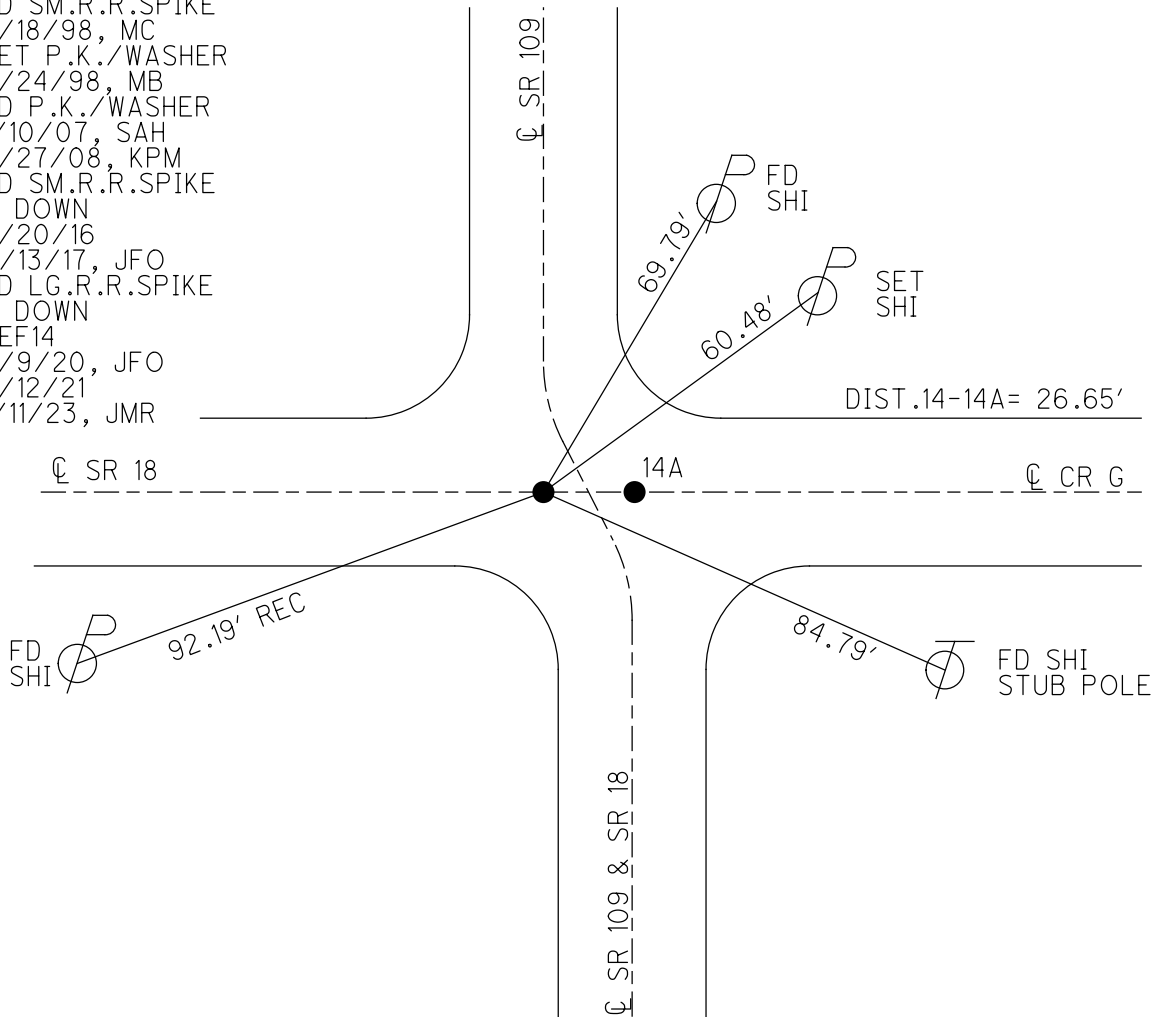
GRID: NORTHING: 582031.179

EASTING: 1546046.403



RECORD:
 FD SM.R.R.SPIKE
 5/18/98, MC
 SET P.K./WASHER
 9/24/98, MB
 FD P.K./WASHER
 1/10/07, SAH
 6/27/08, KPM
 FD SM.R.R.SPIKE
 1" DOWN
 6/20/16
 11/13/17, JFO
 FD LG.R.R.SPIKE
 1" DOWN
 REF14
 6/9/20, JFO
 3/12/21
 1/11/23, JMR

NOTE: REF 20B SR 18



O.D.O.T. DISTRICT 2 SURVEY OFFICE (USE ONLY)

PERSONNEL _____ REFERENCE NO. 14 SHEET 21 OF 25
 NOTES NIESE DATE 3/12/21 ROUTE SR 109
 H.C. RHOADES WEATHER SUNNY COUNTY HENRY
 R.C. _____ TEMP. 50° TOWNSHIP MONROE
 DWG BY NIESE PID PAVE TRAIN SECTION 34
 T 4 N R 7 E

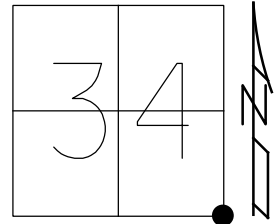
TYPE MONUMENT LG.R.R.SPIKE

~~ON SURFACE~~ - BELOW 1"

OFFSET C PAVEMENT 20.5' LT : ~~RT~~
- TO - EDGE PAVEMENT

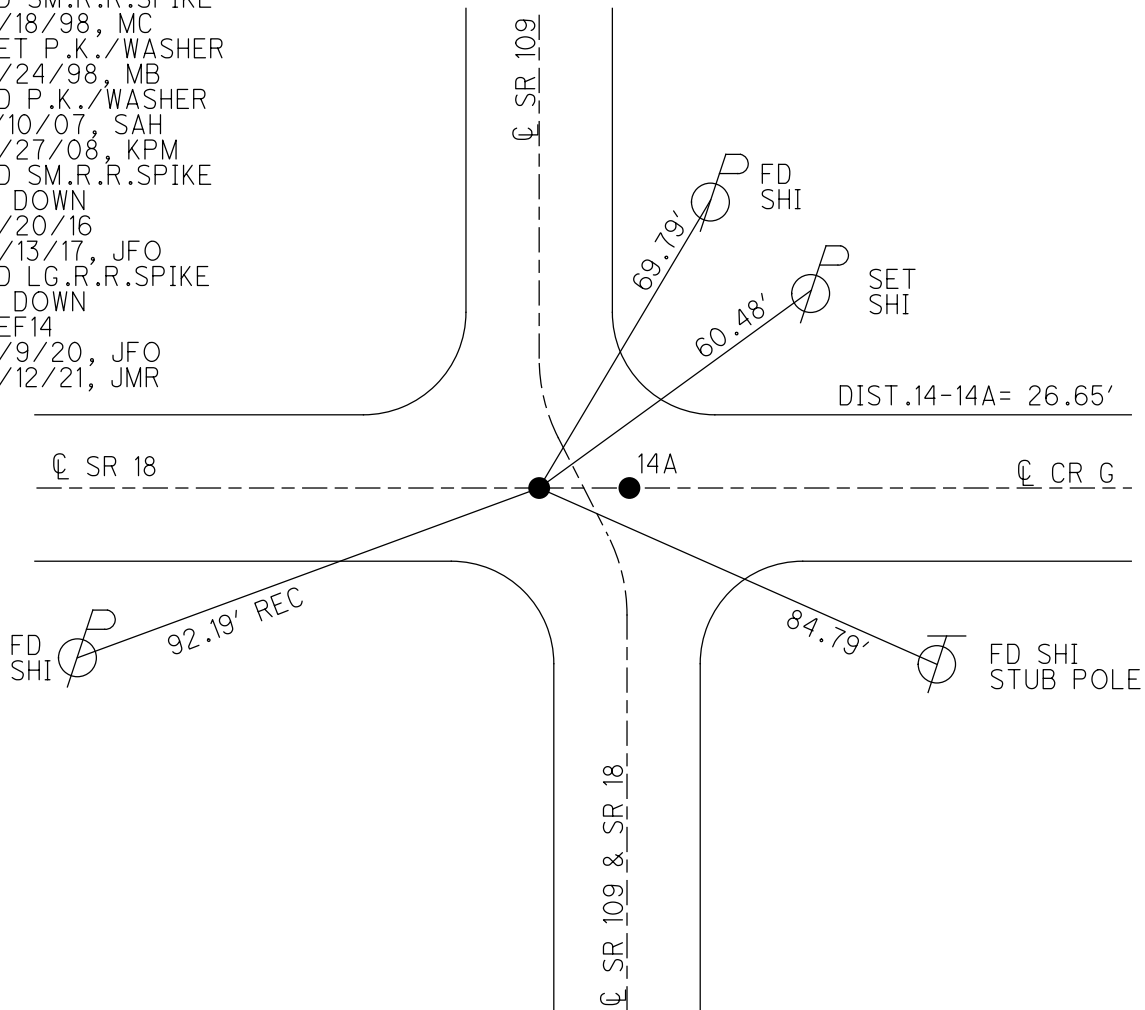
STATION: 317+60

HORIZ.DATUM: NAD83(2011) GEOID: NAVD88 2012A
 GRID: NORTHING: 582031.179 EASTING: 1546046.403



RECORD:
 FD SM.R.R.SPIKE
 5/18/98, MC
 SET P.K./WASHER
 9/24/98, MB
 FD P.K./WASHER
 1/10/07, SAH
 6/27/08, KPM
 FD SM.R.R.SPIKE
 1" DOWN
 6/20/16
 11/13/17, JFO
 FD LG.R.R.SPIKE
 1" DOWN
 REF14
 6/9/20, JFO
 3/12/21, JMR

NOTE: REF 20B SR 18



O.D.O.T. DISTRICT 2 SURVEY OFFICE (USE ONLY)

PERSONNEL _____ REFERENCE NO. 14 SHEET 21 OF 26

NOTES CANTERBURY DATE 05-18-1998 ROUTE SR 109

H.C. ROUSOS WEATHER SUNNY COUNTY HENRY

R.C. HUSS TEMP. 80°F TOWNSHIP MONROE

SECTION 34

T 4 N R 7 E

TYPE MONUMENT SM. RR SPK

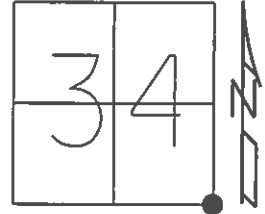
ON SURFACE - ~~BELOW~~ ON _____

LEFT - ℄ PAV'T - ~~RIGHT~~ 20.5'

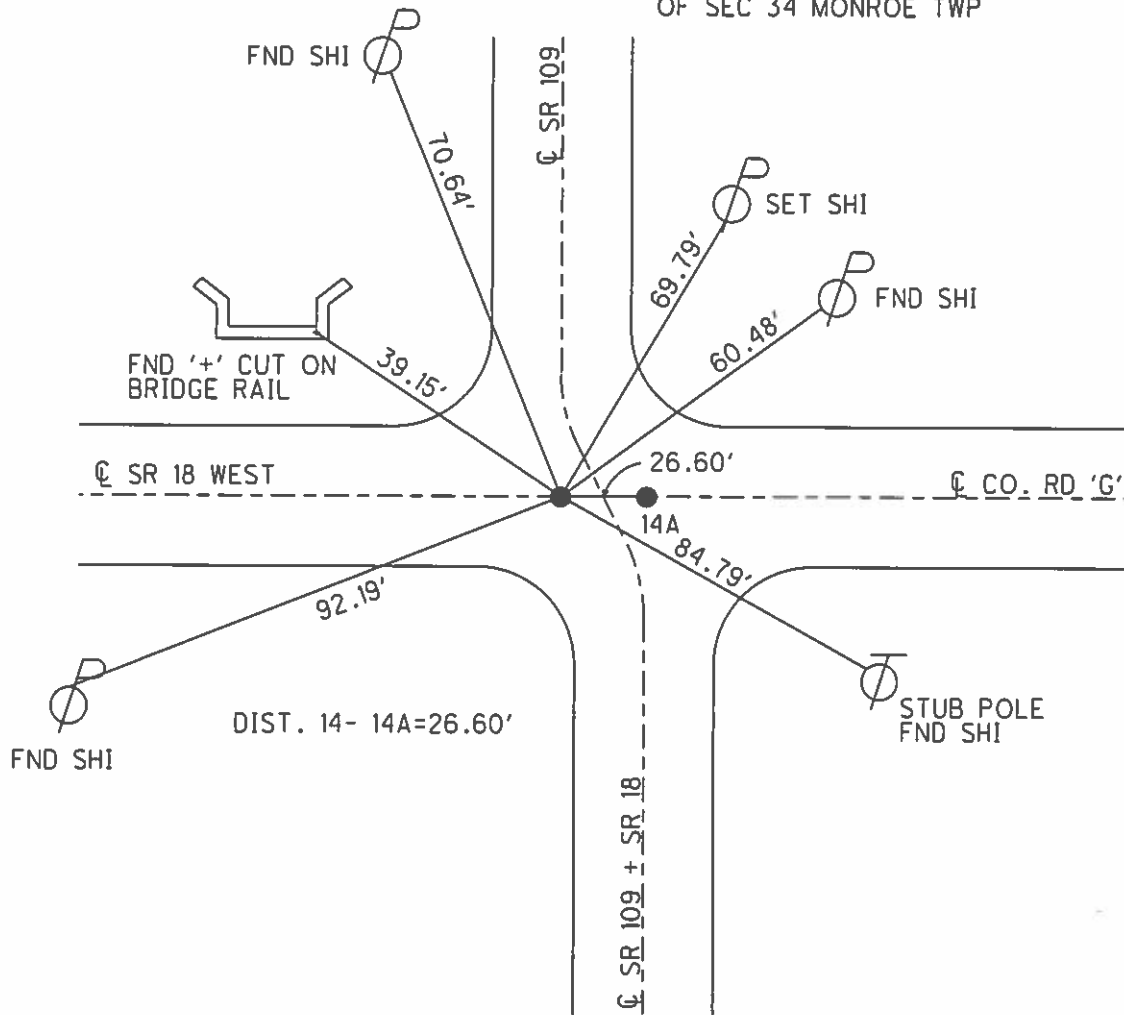
- TO - EDGE PAVEMENT

S.L.M. 299+33.6

Grid: Northing: _____ Easting: _____



FND SMALL RR SPK @ SURFACE
20.1' W OF ℄ PVMT SR109 @ S.E. CORNER
OF SEC 34 MONROE TWP



O.D.O.T. DISTRICT 2 SURVEY OFFICE

PERSONNEL _____

REFERENCE NO. # 14

SHEET 17 OF 21

NOTES Canterbury

H.C. Rados

R.C. Huss

DATE 5-18-98

WEATHER Sunny

TEMP. +80°F

ROUTE SR 109

COUNTY Henry

TOWNSHIP Monroe+Marion

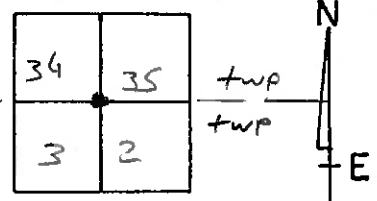
SECTION 34+3

T. R.

TYPE MONUMENT A-Sm. RR spike / B-RR spike
 ON SURFACE BELOW Both on surface

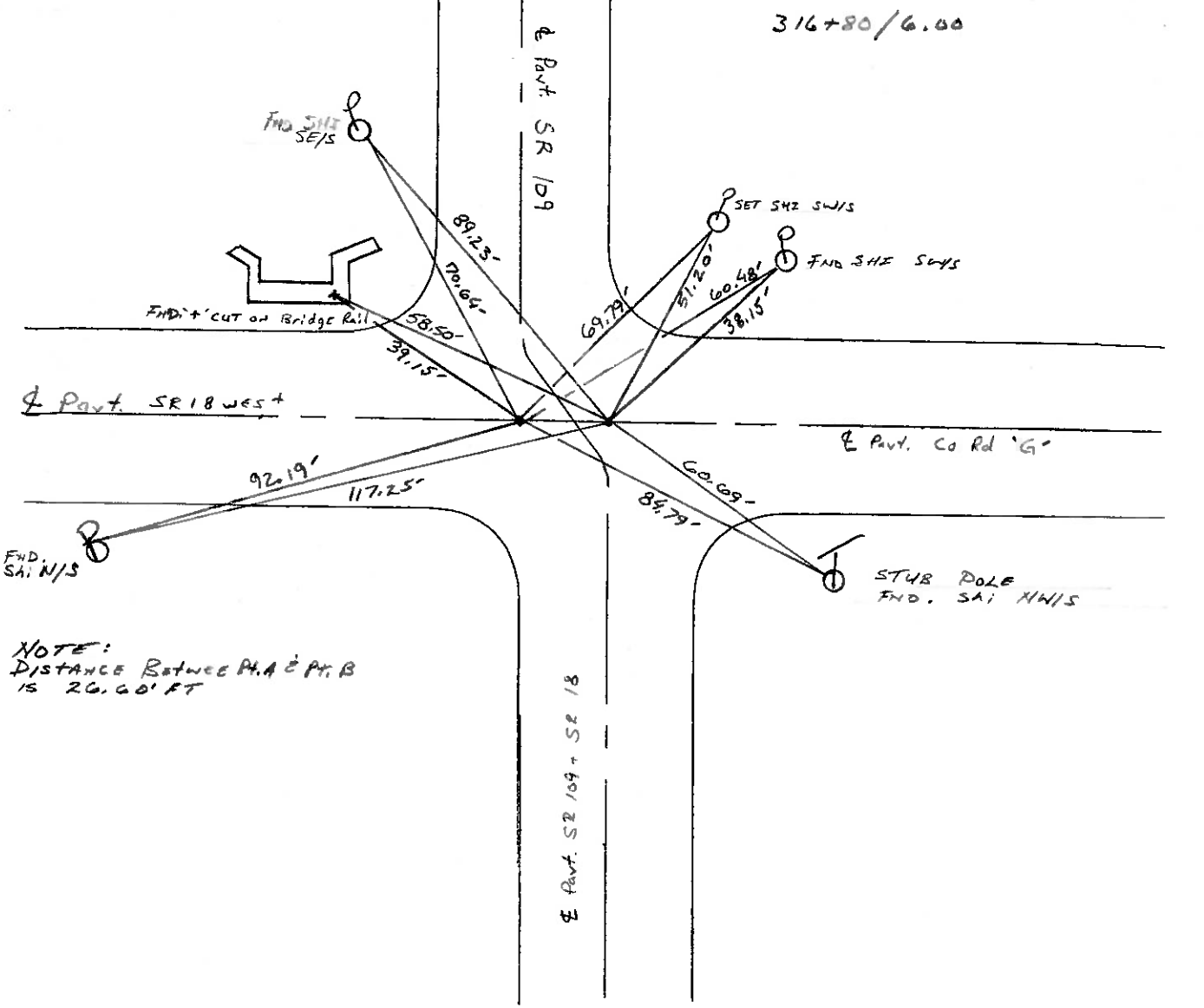
LEFT- C PAV'T. - RIGHT A 20.5' Rt Pav't B 6.5' Rt Pav't
TO EDGE PAVEMENT

S.L.M. SR 109 - 9+656 SLK / SR 18, 16-020 SLK



PT 'A' Fd Small RR spike @ surface
 20.1' W of E Pav't SR 109
 @ S.E. corner of SEC 34 Monroe twp

PT 'B' Fd RR spike at surface
 set by county @ N.E. corner SEC 3, Marion twp
 6.5' E of E Pav't SR 109



NOTE:
 DISTANCE BETWEEN PT. A & PT. B
 IS 20.00 FT

Q.D.O.T. DISTRICT 2 SURVEY OFFICE

SHEET _____ OF _____

County HENRY S.R. 109 & 18

Date April 26, 83

Township MONROE & MARION

Weather CLEAR

Section 34 & 3

Temp. +65°

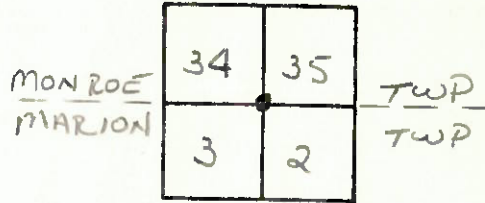
T N, R E

Personnel HOFFMAN

LOHRICE

BARWISSEL

#14
SR 109



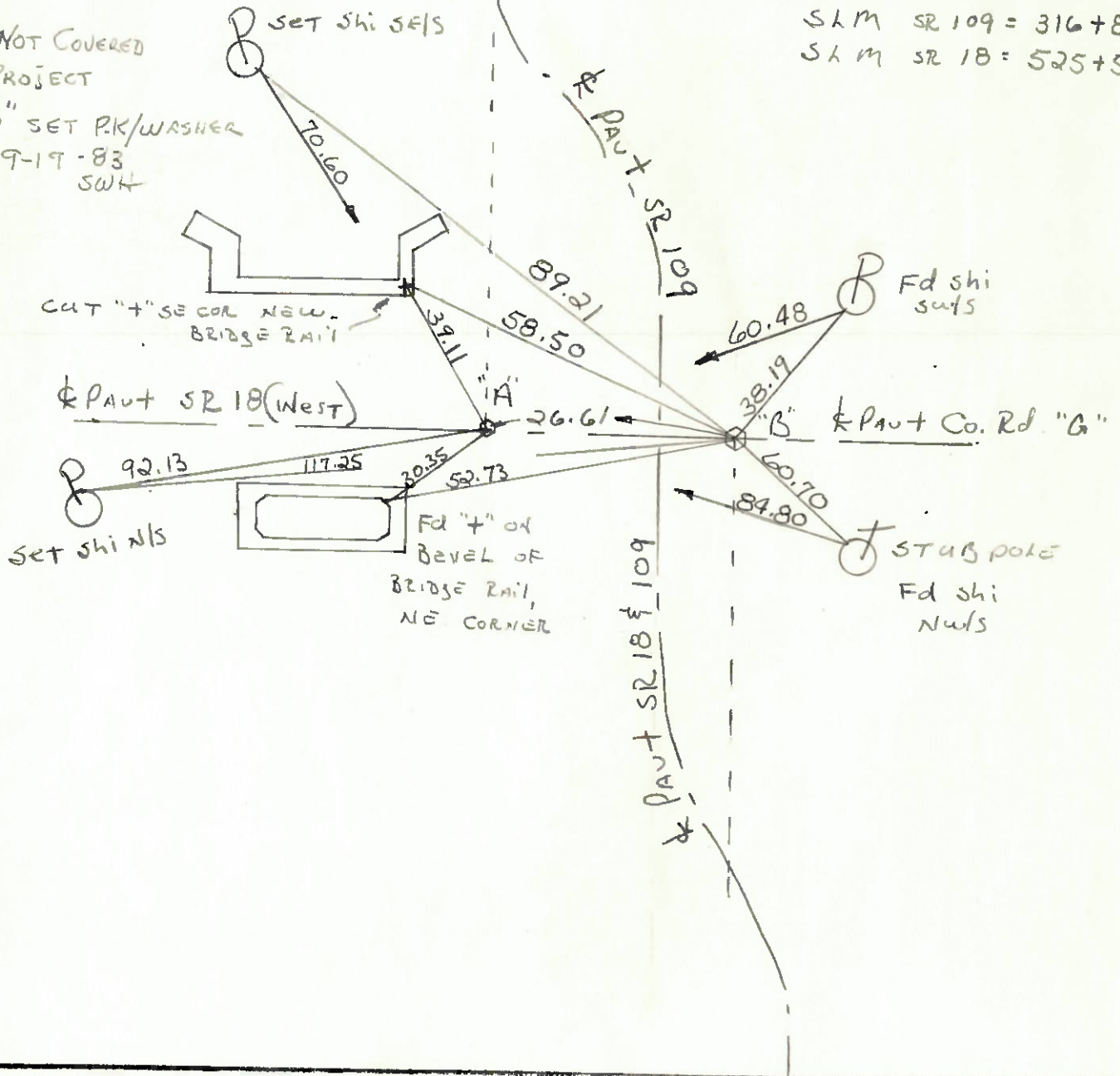
PT "A" Fd small RR spike @ surface
20.1' West of & PAUT SR 109
@ S.E. CORNER SEC. 34, MONROE TWP

PT "B" Fd RR spike @ surface
Set BY COUNTY @ N.E. CORNER
SEC 3, MARION TWP.
6.5' EAST of & PAUT SR 109

SLM SR 109 = 316+80
SLM SR 18 = 525+58

PT. "A" NOT COVERED
THIS PROJECT

P.T. "B" SET P.K./WASHER
9-19-83
SWH



County HENRY S.R. 18-109

Date 5-29-81 8-20-81

Township MARION

Weather cloudy

Section 2

Temp. +60°

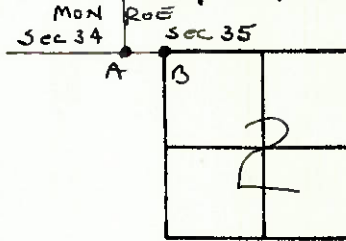
T3N, R7E

Personnel S. Hoffmann

C. Loehrke

L. Householder

21



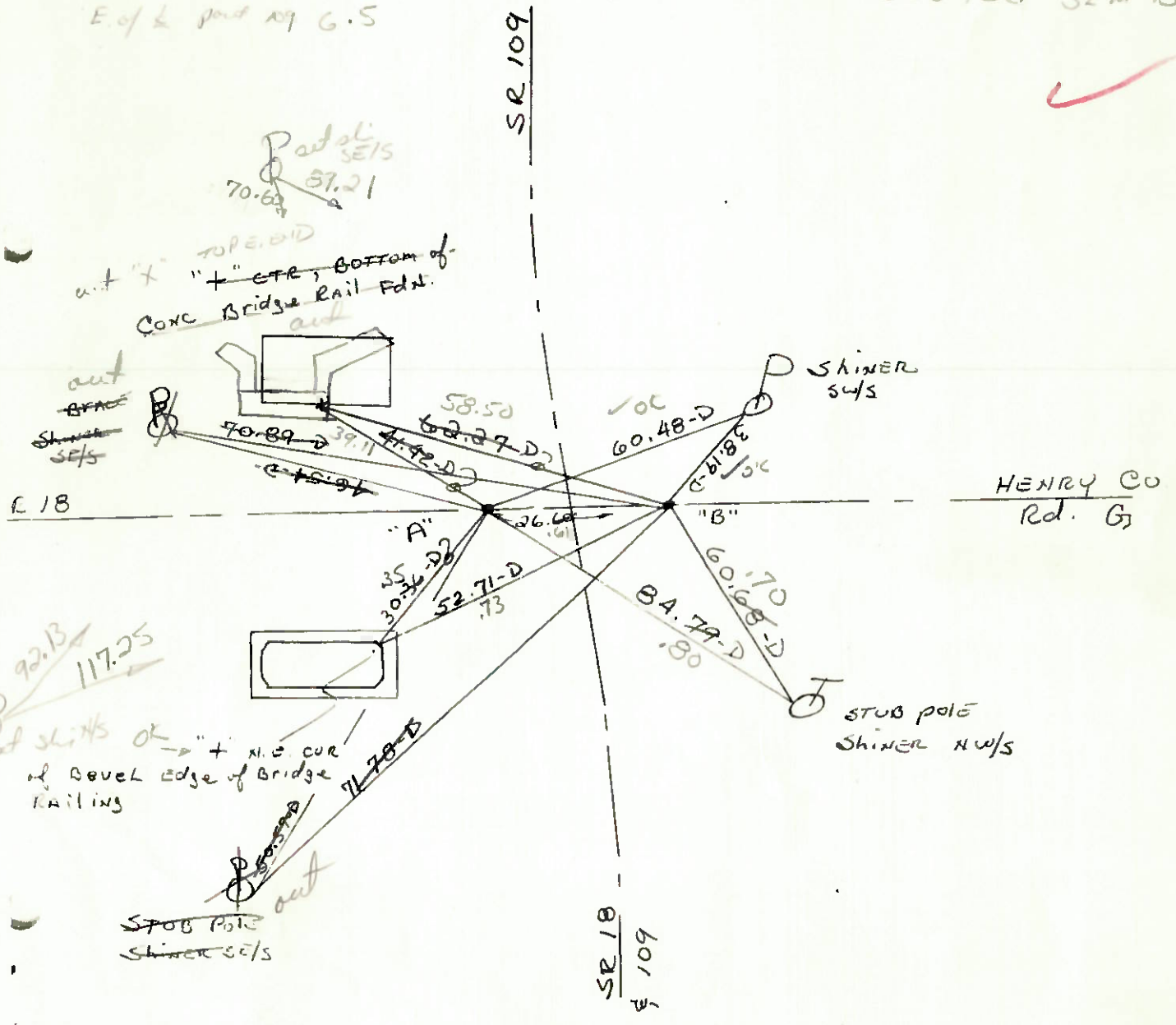
9-26-83
+65°
SWP
C.L.
MB

"A" Fd. R.R. SPK @ SURFACE
FD SET SMALL R.R. SPK.
20.1 West of E part 109

PROJECT STA ± 316+80 SL in 109

"B" Fd. R.R. SPK @ SURFACE
E. of E part 109 G.S

PROJECT STA ± 525+58 SL in 18



ODOT DISTRICT 2 SURVEY OFFICE

SHEET 15 OF

County HENRY S.R. 18-109

Date 5-29-81 8-20-81

Township MARION

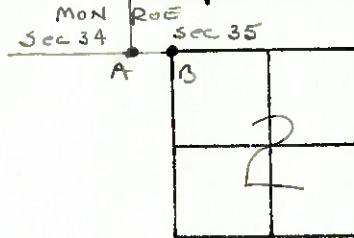
Weather cloudy

Section 2

Temp. +60°

T3N, R7E

Personnel S. Hoffmann



C. Loehrke

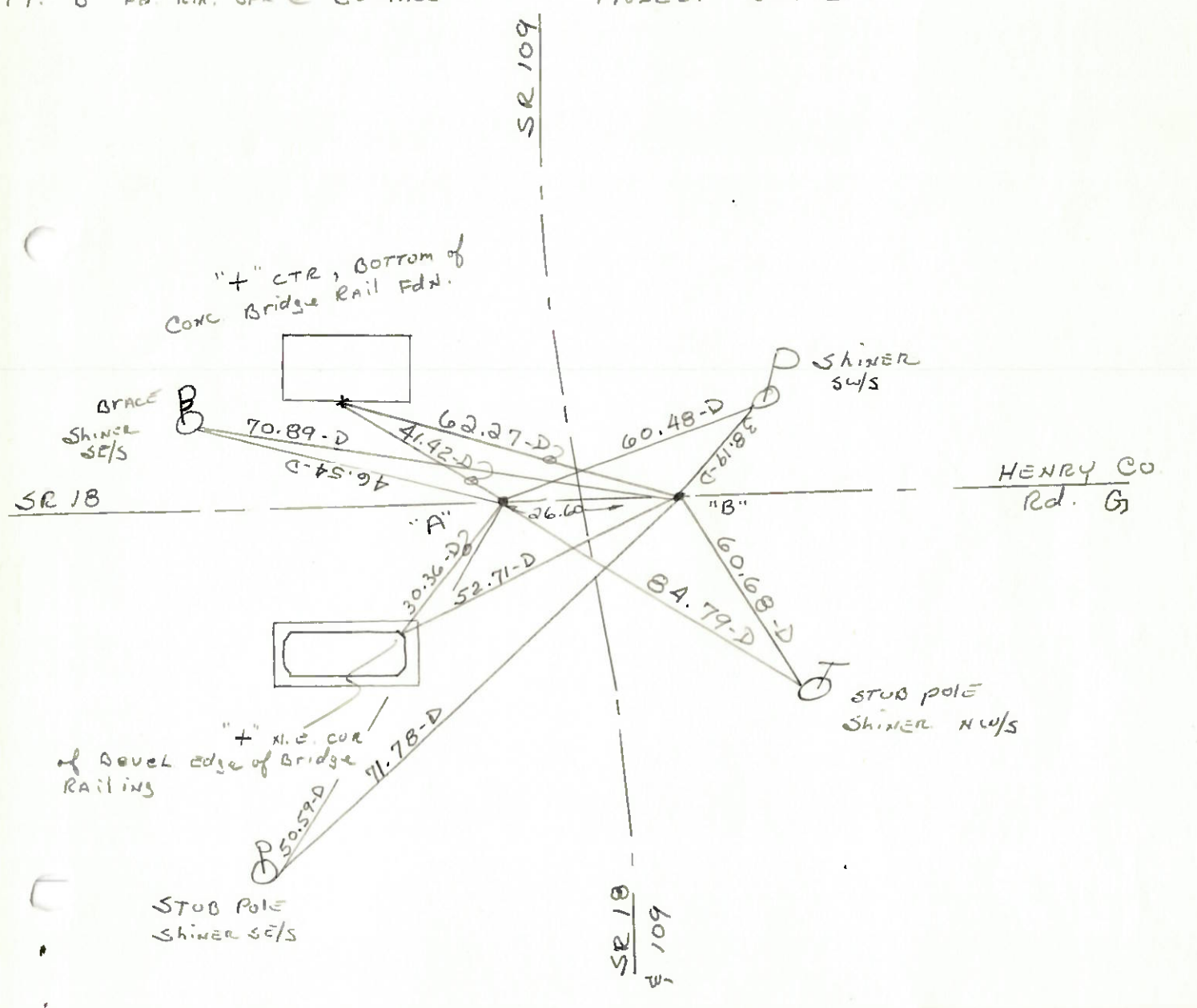
#21 L. Householder

PT. "A" Fd. R.R. SPK @ SURFACE
SET SMALL R.R. SPK.

PROJECT STA ±

PT. "B" Fd. R.R. SPK @ SURFACE

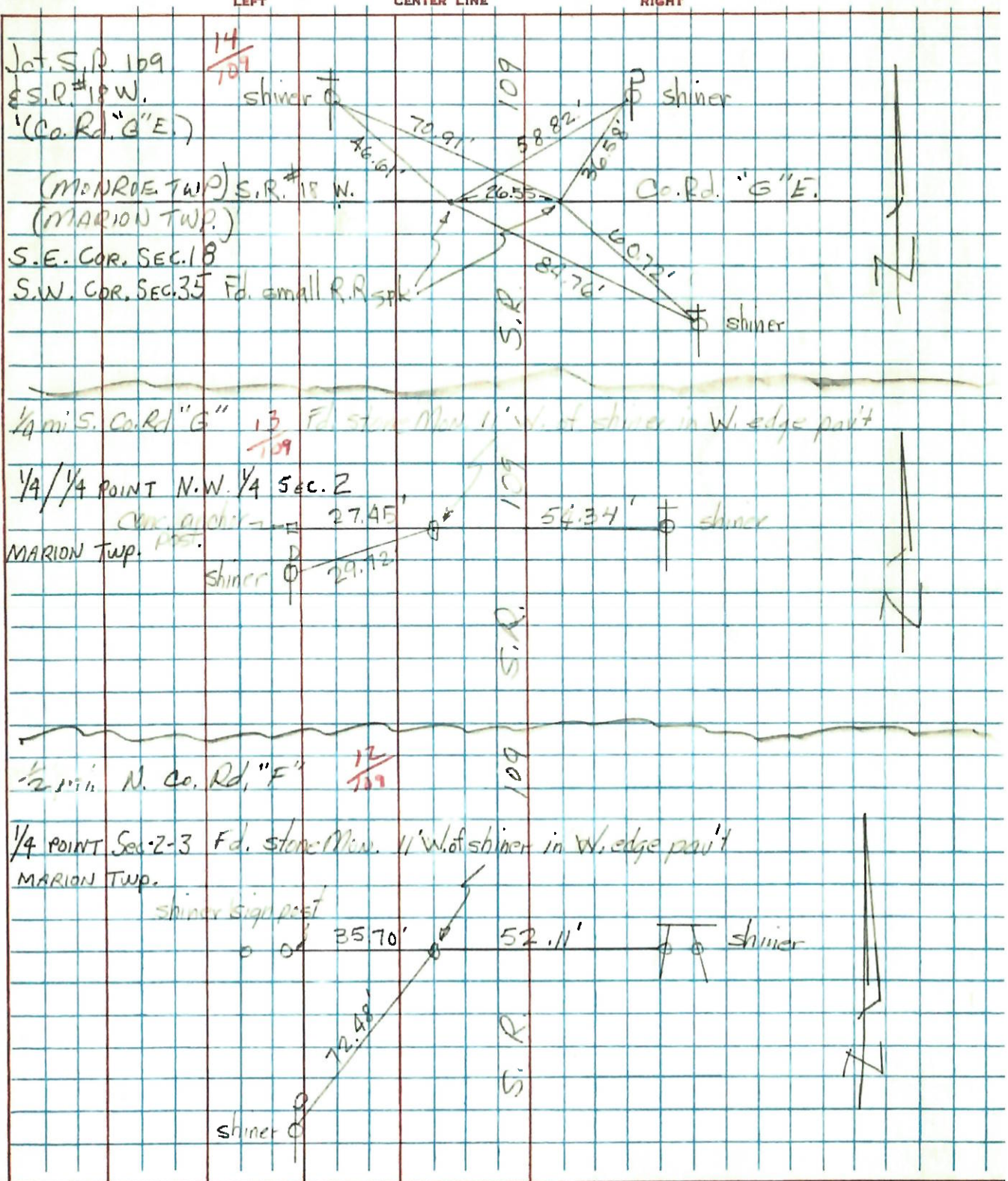
PROJECT STA ±



PERSONNEL TITLE PERSONNEL TITLE
 Tomcio _____
 Neuser _____
 Granata _____
 Vanja _____

COUNTY WENDE DATE Oct. 31, 1973
 S. R. 109 WEATHER _____
 SEC. 17, 18, 19 TEMP _____

DESCRIPTION LEFT CENTER LINE RIGHT JOB NO.



SHEET NO. 4

PERSONNEL TITLE PERSONNEL TITLE

BURNSIDE
BOWERS

COUNTY HENRY

DATE 5-11-72

S. R. 18 & 109

WEATHER CLEAR

SEC. _____ TEMP +63°

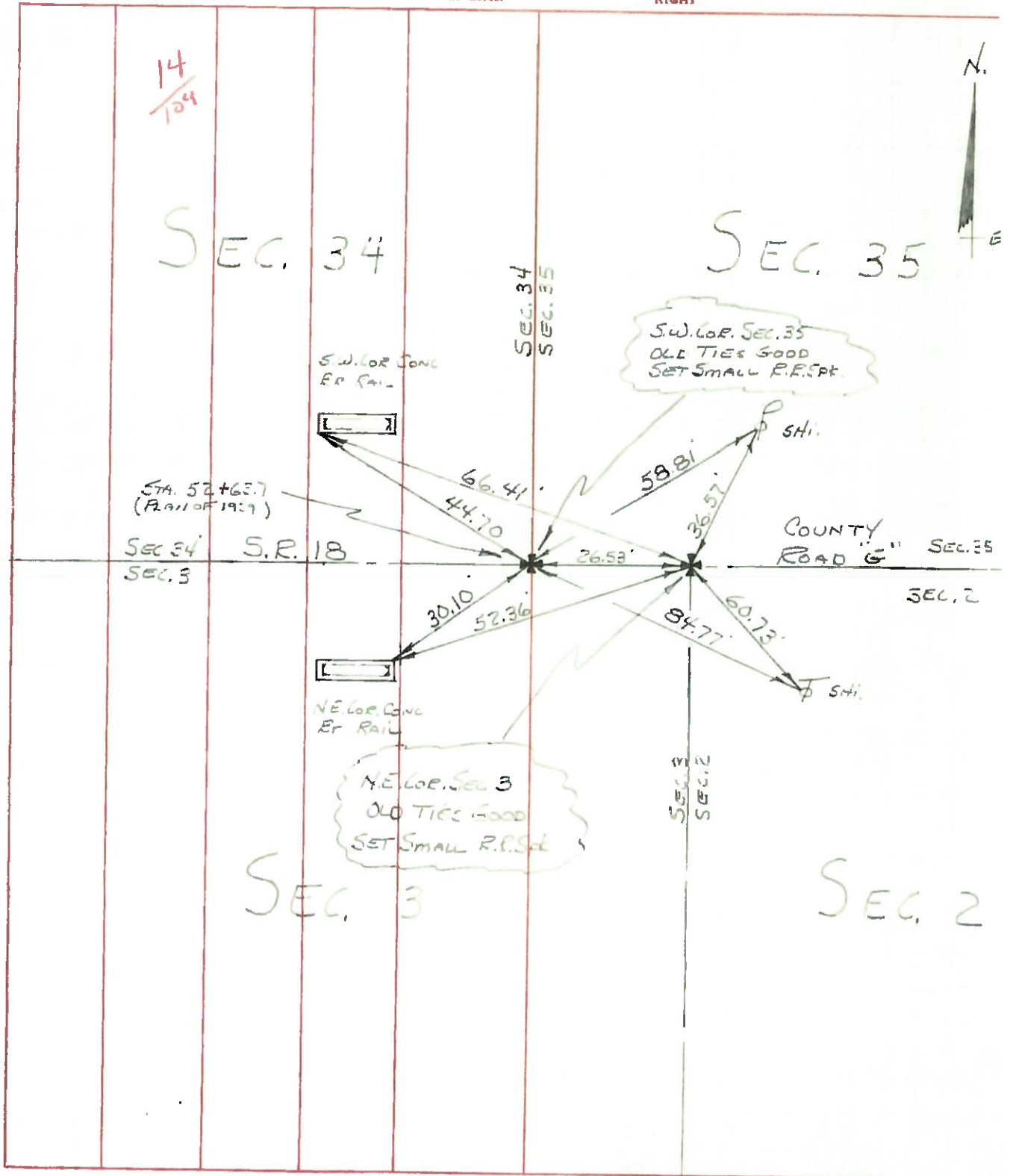
DESCRIPTION CONTROL TIES NORTH OF HAMLER

JOB NO. _____

LEFT CENTER LINE RIGHT

14

14 A



14
104

SEC. 34

SEC. 35

SEC. 34
SEC. 35

S.W. COR. SEC. 35
OLD TIES GOOD
SET SMALL P.R. SET

S.W. COR. CONC.
RR. RAIL

STA. 52+65.7
(PLAN OF 1939)

SEC. 34
SEC. 3
S.R. 18

COUNTY
ROAD "G" SEC. 35

SEC. 2

N.E. COR. CONC.
RR. RAIL

N.E. COR. SEC. 3
OLD TIES GOOD
SET SMALL P.R. SET

SEC. 3

SEC. 3
SEC. 2

SEC. 2

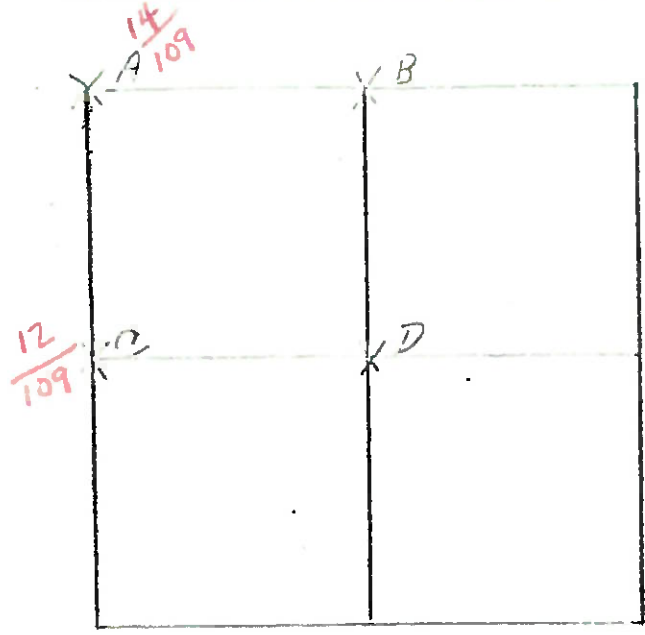
COUNTY HENRY S.R. 109

T-3-N, R-7-E

TOWNSHIP MONROE

SECTION 2

6-11-79
RW, 35, 61



A - FOUND IRON BOLT 0.10' SOUTH AND 0.11' WEST OF HIGH POINT OF STONE (8" X 14" X 1 1/2") 14" BELOW ROAD SURFACE. FOUND WOOD STAKE 1/5 STONE. PLACED CENTER PUNCHED R.R. SPIRE ON SURFACE OVER HIGH POINT OF STONE. P.K.'S 6' NORTH AND WEST.

- 70.88' W.N.W. TO SHINER SE 1/5 BRACE POLE
- 36.44' N.E. TO SHINER SW 1/5 POWER POLE
- 60.65' E.S.E. TO SHINER NW 1/5 TELEPHONE MARKER POLE
- 52.73' W.S.W. TO "4" N.E. CORNER CONC. BRIDGE WALL
- 36.60' W. TO S.W. CORNER SEC. 35, MONROE TWP.
- 6-11-79 RW, JT, 61'

- B - FOUND IRON PIN ANGLED OVER TWO STONES. STONE #1 USED AS A BASE AND IS (10" X 15" X 5") 19" BELOW ROAD SURFACE. CORNER STONE SETS ON BASE STONE AND IS (5" X 8" X 11") 8" BELOW ROAD SURFACE. REMOVED IRON PIN AND PLACED CENTER PUNCHED R.R. SPIRE ON SURFACE 0.49' SOUTH OF HIGH POINT OF STONE ON SOUTH LINE OF SEC. 35; MONROE TWP. P.K.'S 16' N. W. STONE IS 8.9' S. OF N. EDGE OF 18' PAVEMENT
- 43.97' N.W. TO SPIRE S 1/5 TELEPHONE POLE
 - 39.25' S.S.E. TO DUPLEX W 1/5 POWER POLE
 - 45.35' S.W. TO IRON PIN ON SOUTH DITCH BACK
 - 34.30' W. TO S 1/4 POST SEC. 35; MONROE TWP.

PERSONNEL TITLE PERSONNEL TITLE

COUNTY Henry

DATE _____

S. R. #109

WEATHER _____

SEC. _____

TEMP. _____

DESCRIPTION

LEFT

CENTER LINE

RIGHT

JOB NO. _____

12

#61 Stone on-fence line
E 1/4 S Sec. #3
Marion, Twp.

54.64 E. Bolt in stump ✓
51.70 E. Spk. in Tele. Pole
28.84 W. Spk. in Cor. Post

13

#62 Stone on-fence line
E 1/4 of N.E. 1/4
Sec. #3 Marion, Twp.

55.65 N.E. 1st Post N. Cor. Post ✓
55.20 E. Spk. Cor. Post
28.84 S.W. Spk. P. Pole

14

NE. Cor. Sec. #3 Marion, Twp.
#63 Iron Bolt in Post
36.87 E. to Stake
20.73 S.W. to Stake
20.08 S.E. to Stake
26.53 W. to Bolt in Cor. Post
21.80 S.W. to Stake
28.87 N.E. to Stake

57.40 N.W. to N.E. Cor. of N. Bridge Rail ✓
52.40 S.W. to N.E. Cor. of S Bridge Rail
26.58 Distance between Stones Monroe Twp.
37.85 N.W. to S.E. cor. of N. Bridge Rail
30.11 S.W. to N.E. Cor. of S. Bridge Rail