

O.D.O.T. DISTRICT 2 SURVEY OFFICE (USE ONLY)

PERSONNEL

REFERENCE NO. 14 A

SHEET 22 OF 25

NOTES NIESE

DATE 3/12/21

ROUTE SR 109

H.C. RHOADES

WEATHER SUNNY

COUNTY HENRY

R.C. _____

TEMP. 50°

TOWNSHIP MONROE

SECTION 34

DWG BY NIESE

PID PAVE TRAIN

T 4 N R 7 E

TYPE MONUMENT LG.R.R.SPIKE

~~ON SURFACE~~ - BELOW 2 1/2"

OFFSET \odot PAVEMENT 6.5' $\overline{\text{L}}\overline{\text{T}}$: RT

- TO - EDGE PAVEMENT

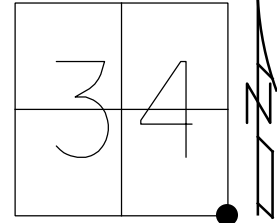
STATION: 317+60

HORZ.DATUM: NAD83(2011)

GEOID: NAVD88 2012A

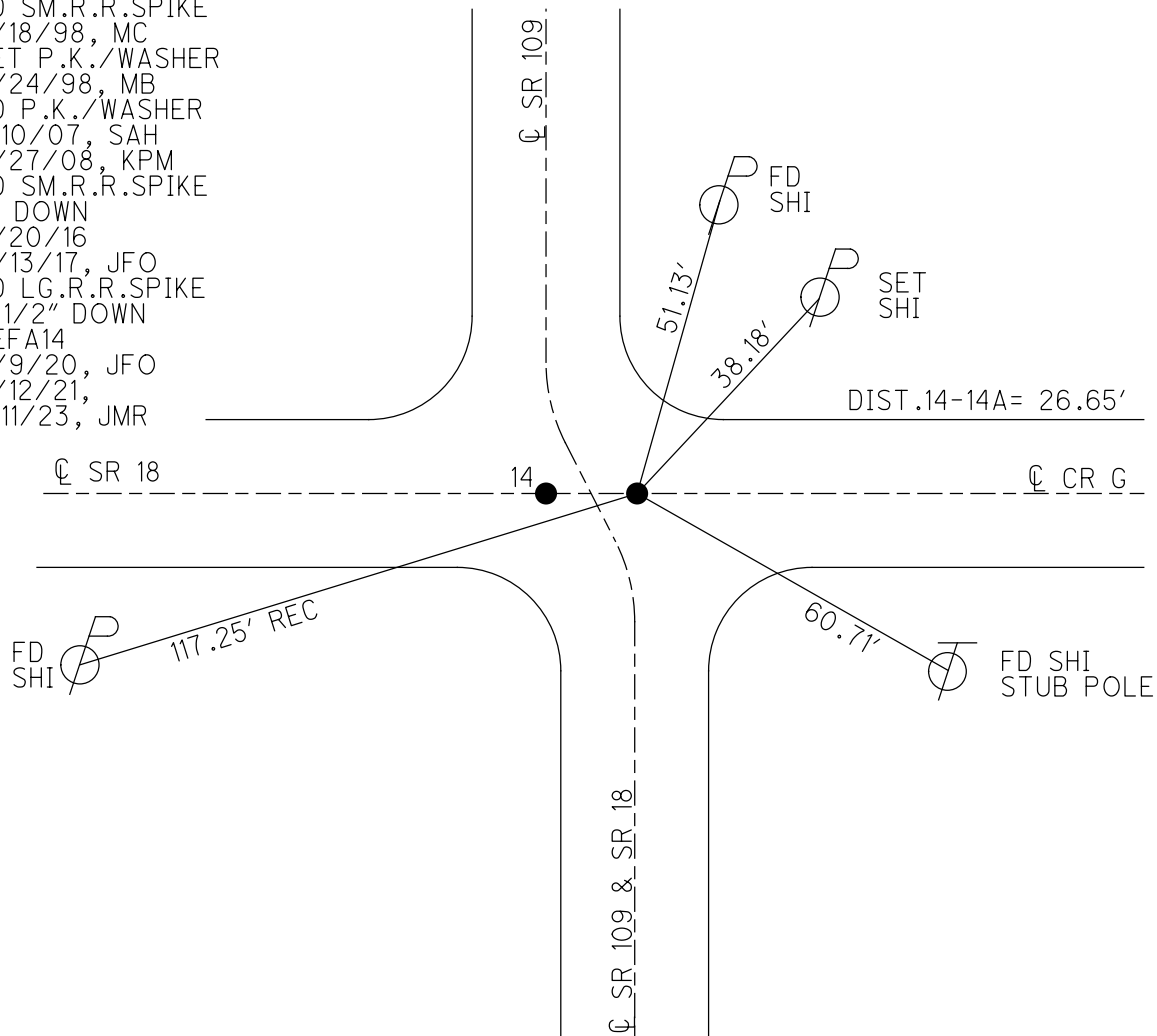
GRID: NORTHING: 582030.833

EASTING: 1546073.032



RECORD:
 FD SM.R.R.SPIKE
 5/18/98, MC
 SET P.K./WASHER
 9/24/98, MB
 FD P.K./WASHER
 1/10/07, SAH
 6/27/08, KPM
 FD SM.R.R.SPIKE
 2" DOWN
 6/20/16
 11/13/17, JFO
 FD LG.R.R.SPIKE
 2 1/2" DOWN
 REFA14
 6/9/20, JFO
 3/12/21,
 1/11/23, JMR

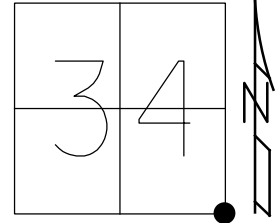
NOTE: REF 21 SR 18



O.D.O.T. DISTRICT 2 SURVEY OFFICE (USE ONLY)

PERSONNEL _____ REFERENCE NO. 14 A SHEET 22 OF 25
 NOTES NIESE DATE 3/12/21 ROUTE SR 109
 H.C. RHOADES WEATHER SUNNY COUNTY HENRY
 R.C. _____ TEMP. 50° TOWNSHIP MONROE
 DWG BY NIESE PID PAVE TRAIN SECTION 34
 T 4 N R 7 E

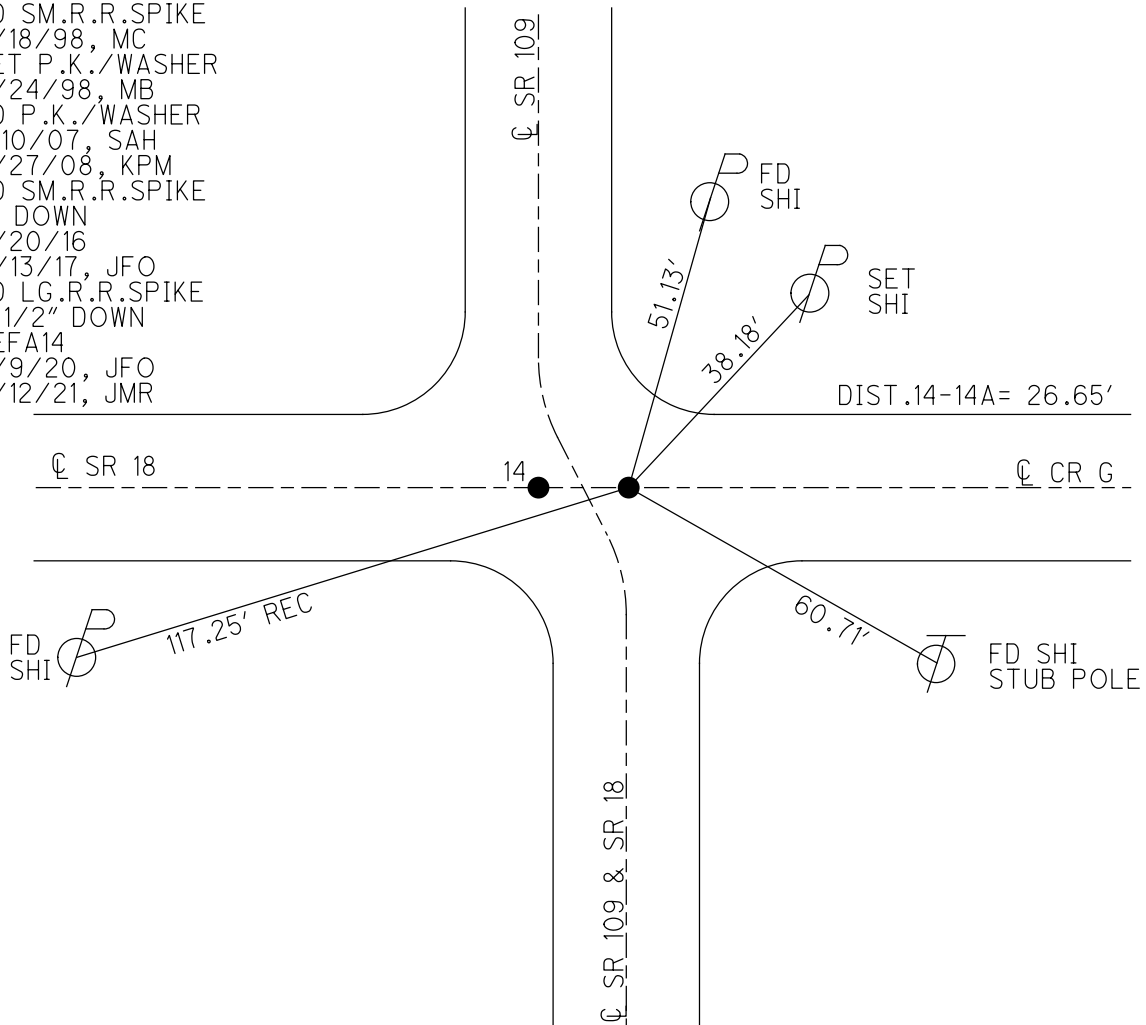
TYPE MONUMENT LG.R.R.SPIKE
~~ON SURFACE~~ - BELOW 2 1/2"
 OFFSET ϕ PAVEMENT 6.5' ~~LT~~ : RT
 - TO - EDGE PAVEMENT
 STATION: 317+60



HORZ.DATUM: NAD83(2011) GEOID: NAVD88 2012A
 GRID: NORTHING: 582030.833 EASTING: 1546073.032

RECORD:
 FD SM.R.R.SPIKE
 5/18/98, MC
 SET P.K./WASHER
 9/24/98, MB
 FD P.K./WASHER
 1/10/07, SAH
 6/27/08, KPM
 FD SM.R.R.SPIKE
 2" DOWN
 6/20/16
 11/13/17, JFO
 FD LG.R.R.SPIKE
 2 1/2" DOWN
 REFA14
 6/9/20, JFO
 3/12/21, JMR

NOTE: REF 21 SR 18



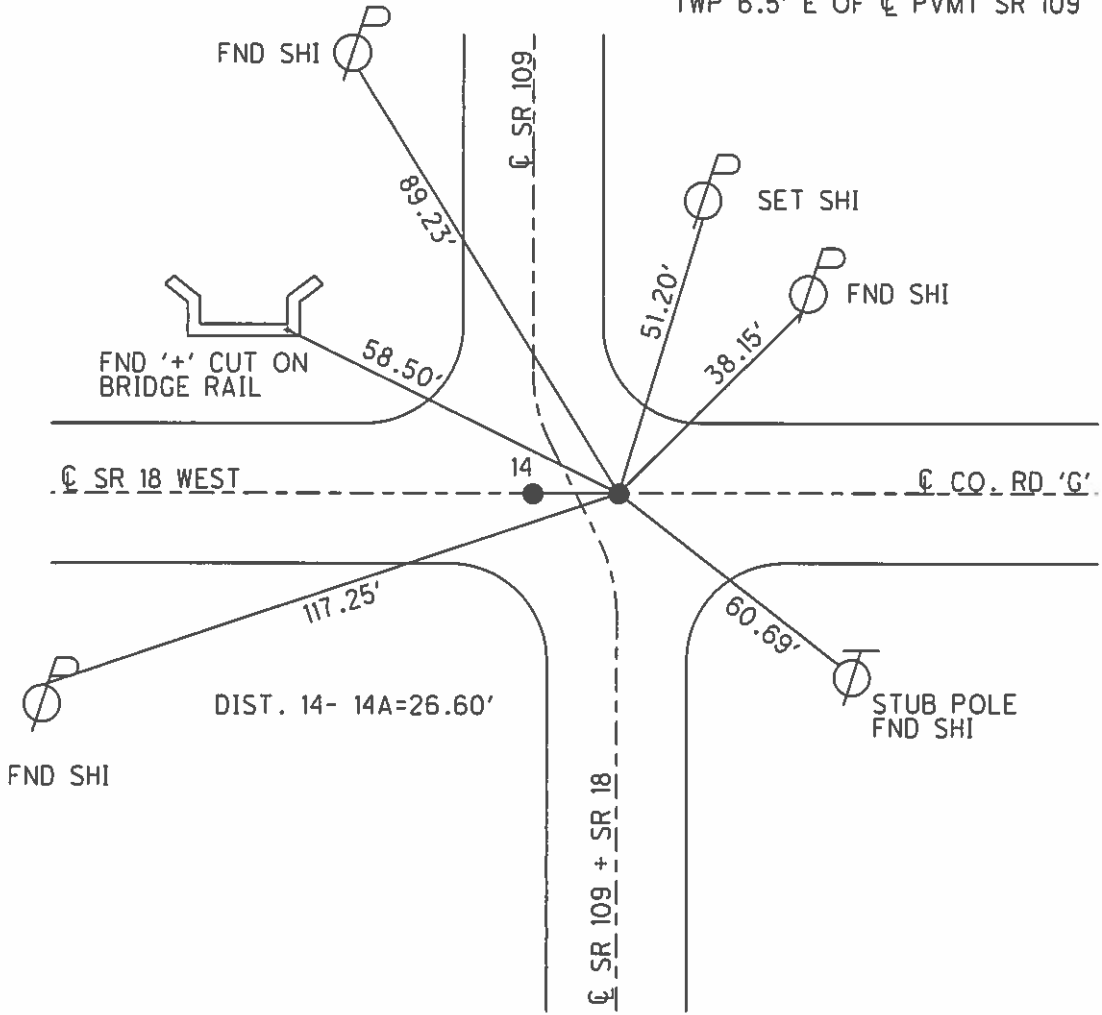
O.D.O.T. DISTRICT 2 SURVEY OFFICE (USE ONLY)

PERSONNEL _____ REFERENCE NO. 14 A SHEET 22 OF 26
 NOTES CANTERBURY DATE 05-18-1998 ROUTE SR 109
 H.C. ROUSOS WEATHER SUNNY COUNTY HENRY
 R.C. HUSS TEMP. 80°F TOWNSHIP MONROE
 _____ SECTION 34
 _____ T 4 N R 7 E

TYPE MONUMENT RR SPK
 ON SURFACE - ~~BELOW~~ ON
~~LEFT~~ - ☉ PAV'T - RIGHT 6.5'
- TO - EDGE PAVEMENT
 S.L.M. 299+33.6
 Grid: Northing: _____ Easting: _____

| | |
|----|----|
| 34 | 35 |
| 3 | 2 |

FND RR SPK @ SURFACE SET BY
 COUNTY @ N.E. CORNER SEC 3. MARION
 TWP 6.5' E OF ☉ PVMT SR 109



O.D.O.T. DISTRICT 2 SURVEY OFFICE

PERSONNEL _____

REFERENCE NO. # 14

SHEET 17 OF 21

NOTES Canterbury

H.C. Rados

R.C. Huss

DATE 5-18-98

WEATHER Sunny

TEMP. +80°F

ROUTE SR 109

COUNTY Henry

TOWNSHIP Monroe + Marion

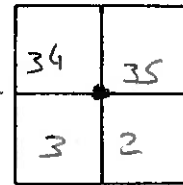
SECTION 34 + 3

T. R.

TYPE MONUMENT A - Sm. RR spike / B - RR spike
 ON SURFACE BELOW Both on surface

LEFT - C PAV'T. - RIGHT A 20.5' Rt + Pav't. R. 6.5' Rt + Pav't.
TO EDGE PAVEMENT

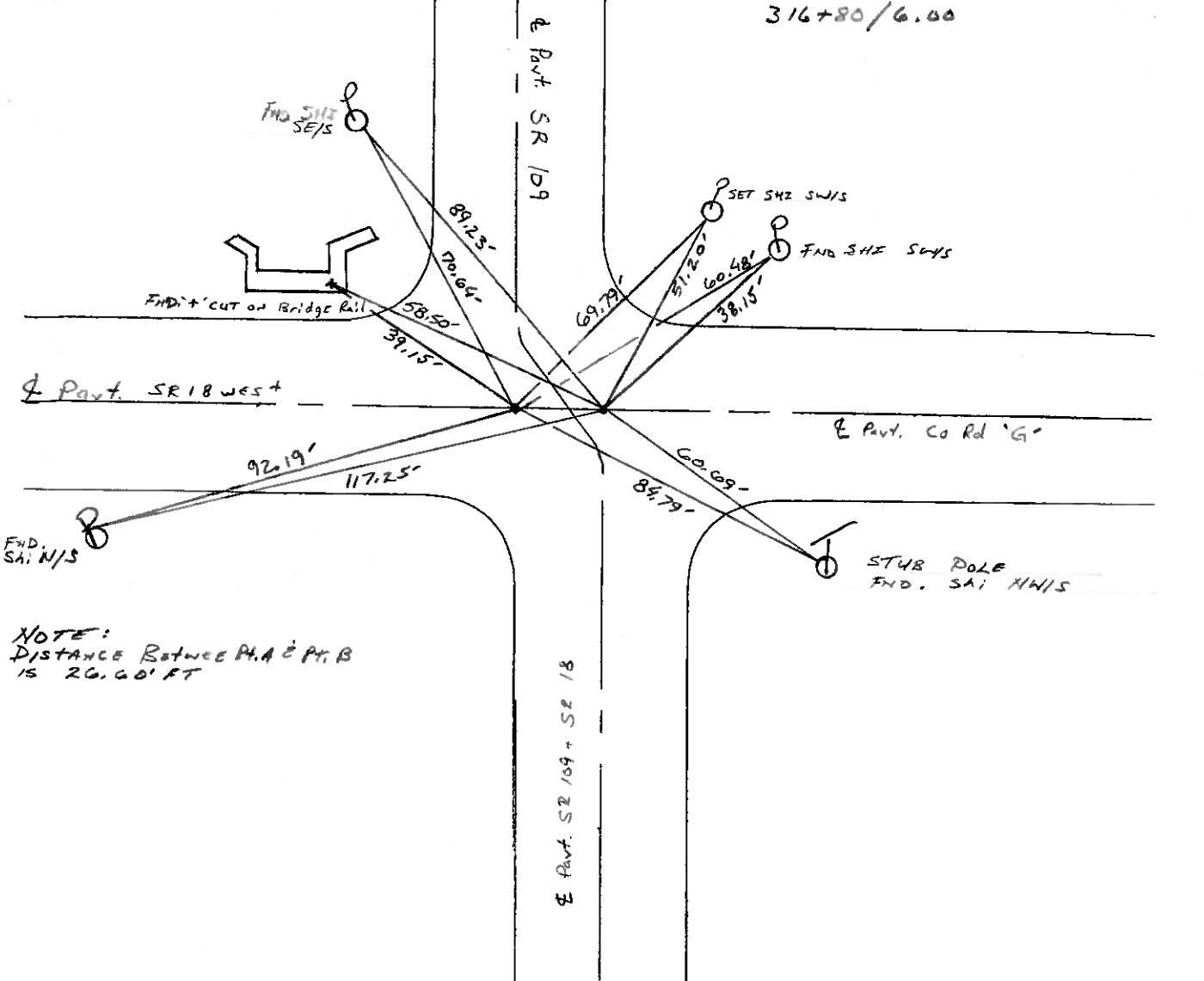
S.L.M. SR 109 - 9+656 SLK / SR 18, 16-020 SLK



PT 'A' Fd Small RR spike @ surface
 20.1' W of E Pav't SR 109
 @ S.E. CORNER of SEC 34 MONROE twp

PT 'B' Fd RR spike at surface
 SET by county @ N.E. CORNER SEC 3, MARION twp
 6.5' E of E Pav't SR 109

316+80 / 6.00



NOTE:
 DISTANCE BETWEEN PT. A & PT. B
 IS 20.60' FT

Q.D.O.T. DISTRICT 2 SURVEY OFFICE

SHEET _____ OF _____

County HENRY S.R. 109 & 18

Date April 26, 83

Township MONROE & MARION

Weather CLEAR

Section 34 & 3

Temp. +65°

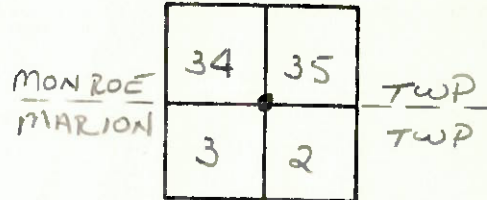
T N, R E

Personnel HOFFMAN

LOHRICE

BARWISSEL

#14
SR 109



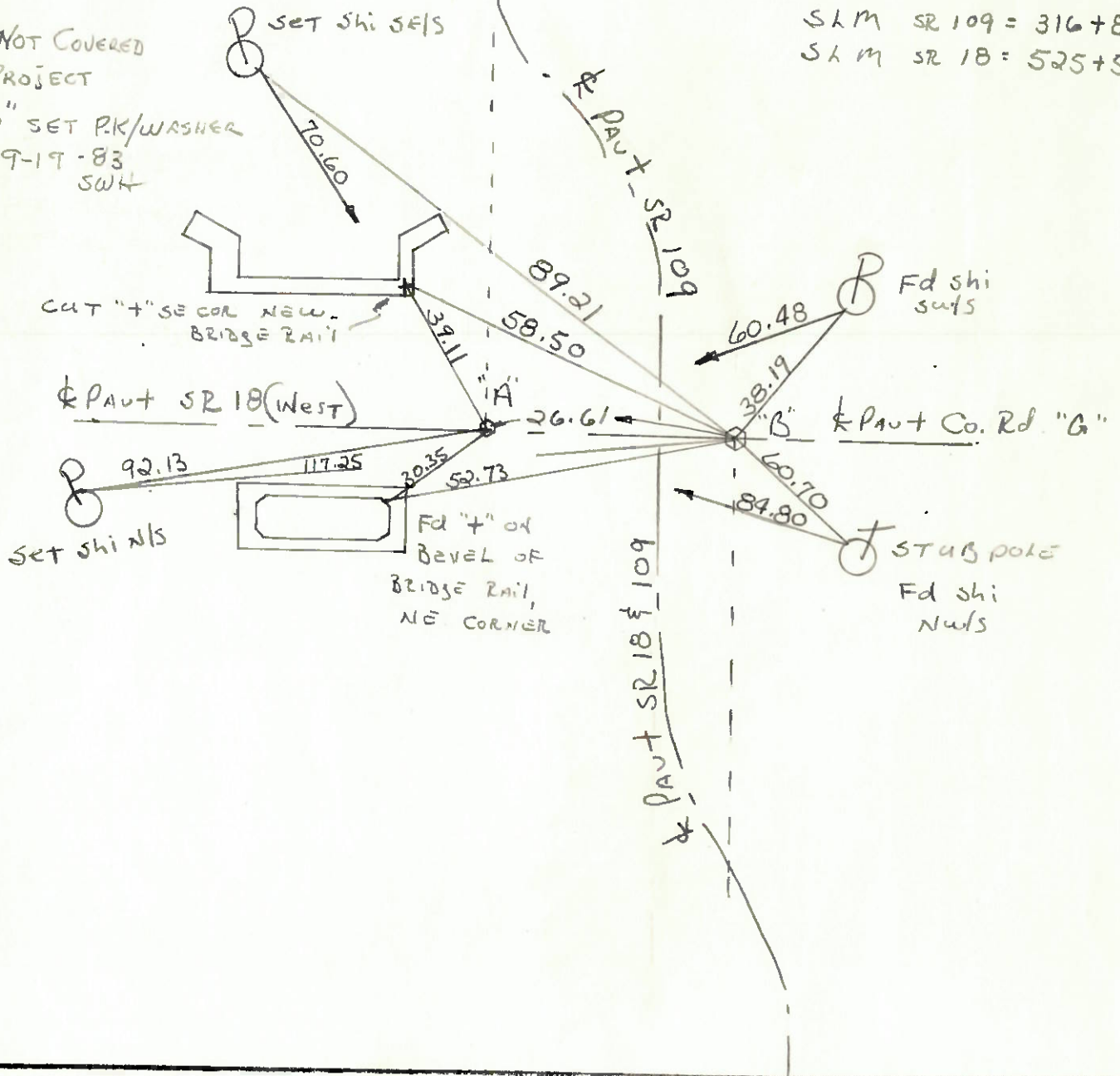
PT "A" Fd small RR spike @ surface
20.1' West of & PAUT SR 109
@ S.E. CORNER SEC. 34, MONROE TWP

PT "B" Fd RR spike @ surface
Set BY COUNTY @ N.E. CORNER
SEC 3, MARION TWP.
6.5' EAST of & PAUT SR 109

SLM SR 109 = 316+80
SLM SR 18 = 525+58

PT. "A" NOT COVERED
THIS PROJECT

P.T. "B" SET P.K./WASHER
9-19-83
SWH



County HENRY S.R. 18-109

Date 5-29-81 8-20-81

Township MARION

Weather cloudy

Section 2

Temp. +60°

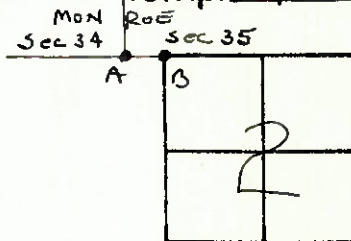
T3N, R7E

Personnel S. Hoffman

21

C. Loehrke

L. Householder



9-26-83

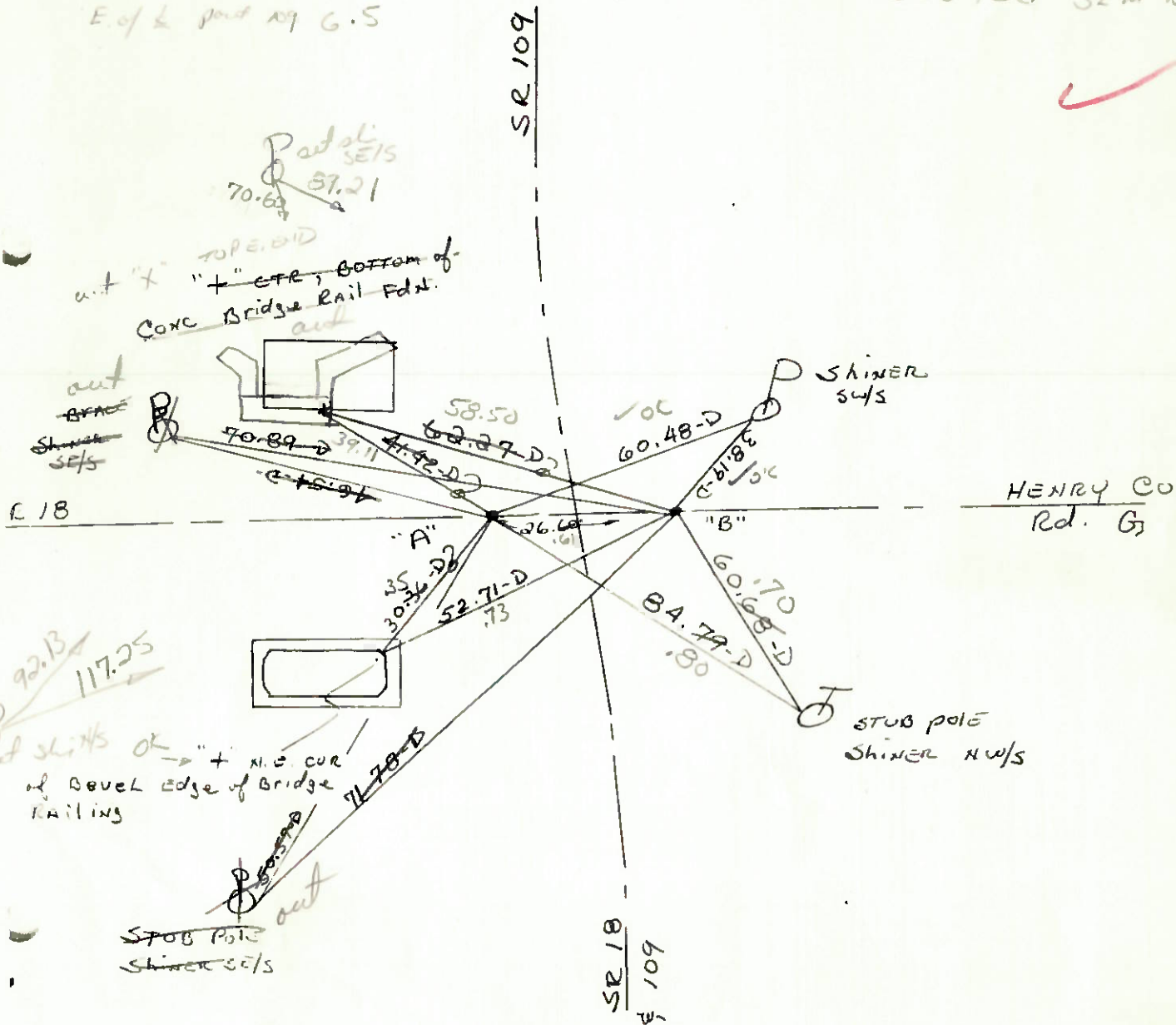
+65°
SWP
C.L.
MB

T "A" Fd. R.R. SPK @ SURFACE
FD SET SMALL R.R. SPK.
20.1 West of E Part 109
Both ends 18 West

PROJECT STA ± 316+80 SL in 109

T "B" Fd. R.R. SPK @ SURFACE
E. of E part 109 G.S

PROJECT STA ± 525+58 SL in 18



ODOT DISTRICT 2 SURVEY OFFICE

SHEET 15 OF

County HENRY S.R. 18-109

Date 5-29-81 8-20-81

Township MARION

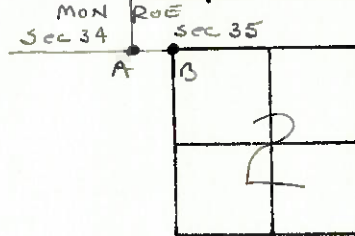
Weather cloudy

Section 2

Temp. +60°

T3N, R7E

Personnel S. Hoffmann



C. Loehrke

L. Householder

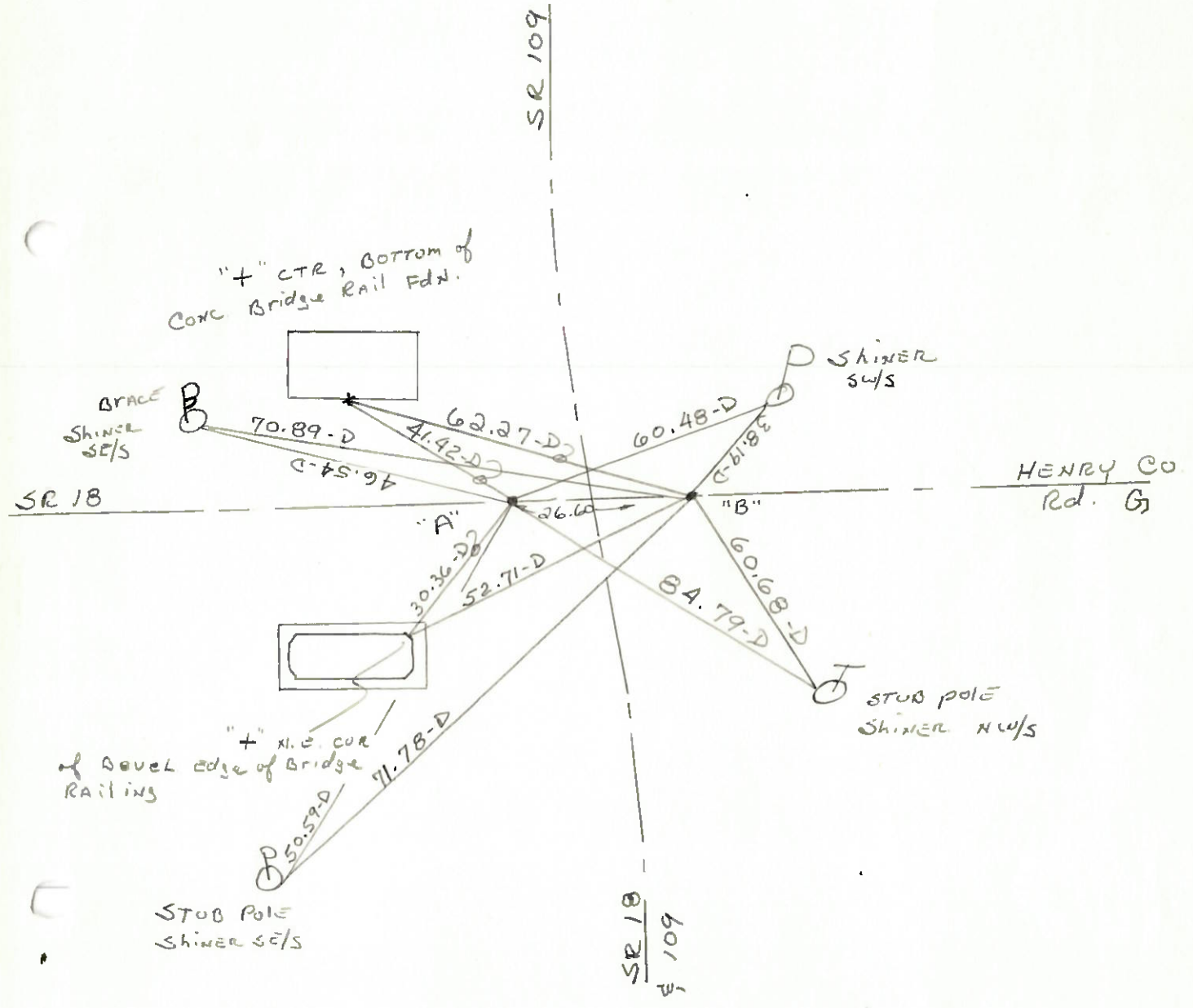
21

PT. "A" Fd. R.R. SPK @ SURFACE
SET SMALL R.R. SPK.

PROJECT STA ±

PT. "B" Fd. R.R. SPK @ SURFACE

PROJECT STA ±



PERSONNEL TITLE PERSONNEL TITLE

COUNTY WENDE DATE Oct. 31, 1973

Tomsic

S. R. 109 WEATHER _____

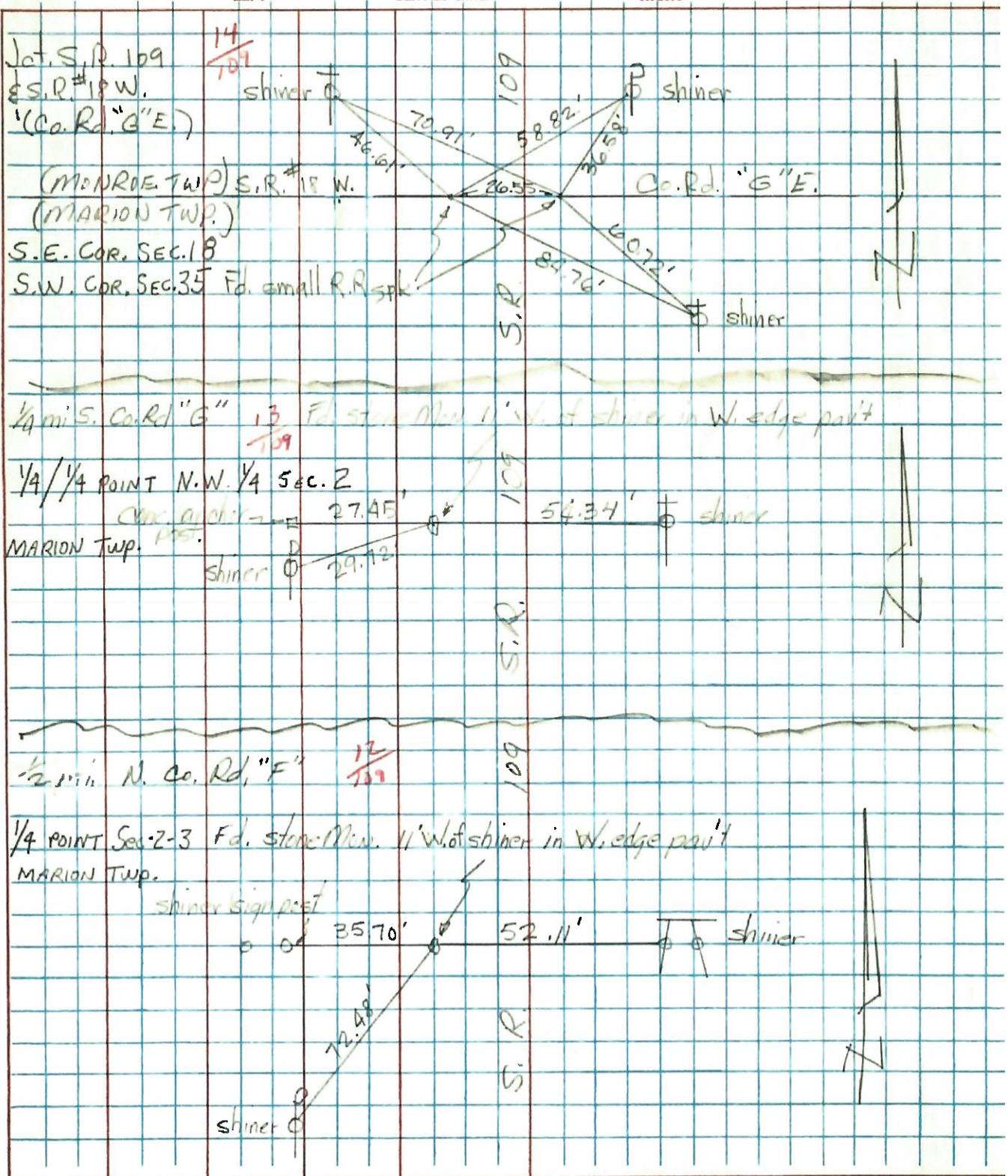
Neuser

Granata

SEC. 17, 18, 19 TEMP _____

Van ya

DESCRIPTION LEFT CENTER LINE RIGHT JOB NO.



SHEET NO. 4

PERSONNEL TITLE PERSONNEL TITLE

BURNSIDE

COUNTY HENRY

DATE 5-11-72

BOWERS

S. R. 18 & 109

WEATHER CLEAR

SEC. _____ TEMP +63°

DESCRIPTION CONTROL TIES NORTH OF HAMLER

JOB NO. _____

LEFT CENTER LINE RIGHT

14

14 A

