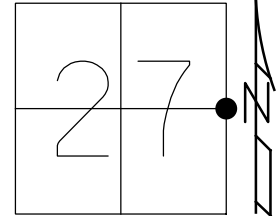


O.D.O.T. DISTRICT 2 SURVEY OFFICE (USE ONLY)

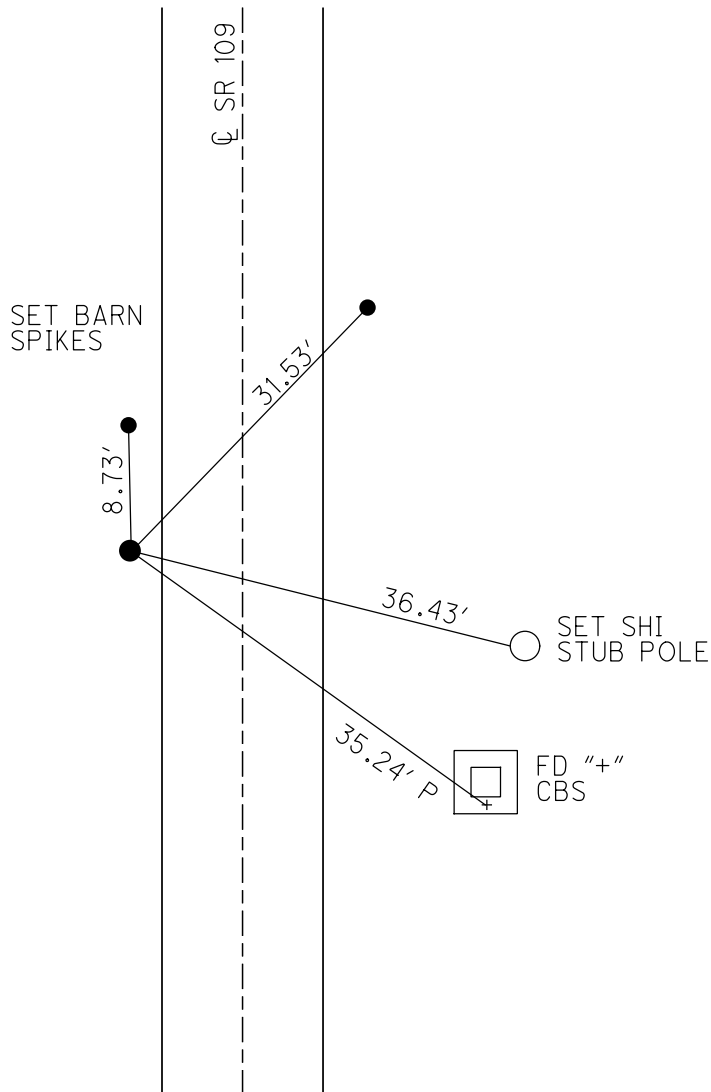
PERSONNEL _____ REFERENCE NO. 17 SHEET 25 OF 25
 NOTES NIESE DATE 3/12/21 ROUTE SR 109
 H.C. RHOADES WEATHER SUNNY COUNTY HENRY
 R.C. _____ TEMP. 50° TOWNSHIP MONROE
 DWG BY RHOADES PID PAVE TRAIN SECTION 34
 T 4 N R 7 E

TYPE MONUMENT SM.R.R.SPIKE
~~ON SURFACE~~ - BELOW 3.5'
 OFFSET \varnothing PAVEMENT 10.7' LT : ~~RT~~
1.0' TO LT EDGE PAVEMENT
 STATION: 397+06



HORZ.DATUM: NAD83(2011) GEOID: NAVD88 2012A
 GRID: NORTHING: 589982.874 EASTING: 1546089.769

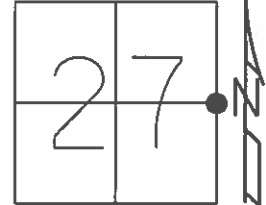
RECORD:
 FD SM.R.R.SPIKE
 1" DOWN
 6/23/89, MDB
 FD P.K./WASHER
 5/18/98, MC
 SET P.K./WASHER
 9/28/98, MB
 FD SM.R.R.SPIKE
 4" DOWN
 2-25-19, JLL
 3 1/2" DOWN
 REF17
 6/9/20, JFO
 3/12/21, JMR



O.D.O.T. DISTRICT 2 SURVEY OFFICE (USE ONLY)

PERSONNEL _____ REFERENCE NO. 17 SHEET 25 OF 26
 NOTES CANTERBURY DATE 05-18-1998 ROUTE SR 109
 H.C. ROUSOS WEATHER SUNNY COUNTY HENRY
 R.C. HUSS TEMP. 80°F TOWNSHIP MONROE
 _____ SECTION 27
 _____ T 4 N R 7 E

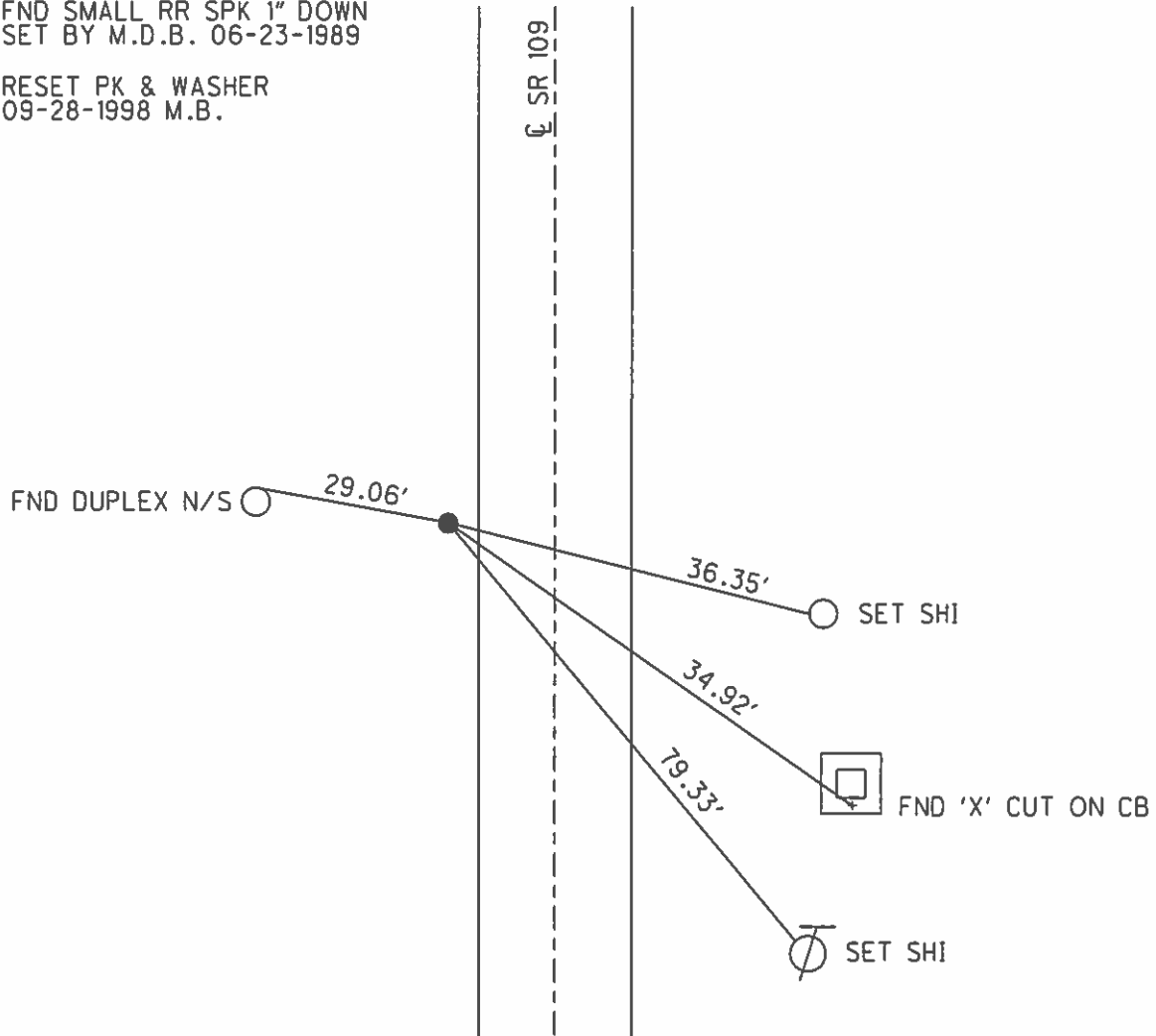
TYPE MONUMENT PK & WASHER
 ON SURFACE - ~~BELOW~~ ON
 LEFT - ☉ PAV'T - ~~RIGHT~~ 10.7'
1.0' TO LT EDGE PAVEMENT
 S.L.M. 397+06



Grid: Northing: _____ Easting: _____

FND SMALL RR SPK 1" DOWN
 SET BY M.D.B. 06-23-1989

RESET PK & WASHER
 09-28-1998 M.B.



O.D.O.T. DISTRICT 2 SURVEY OFFICE

PERSONNEL _____

REFERENCE NO. 17

SHEET 20 OF 21

NOTES Carterbury

H.C. Rousos

R.C. Hess

DATE 5-18-98

WEATHER Sunny

TEMP. +80°F

ROUTE 109

COUNTY Henry

TOWNSHIP Monroe

SECTION 27

T 4 N R 7 E

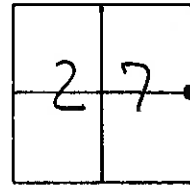
TYPE MONUMENT PK & Washer

ON SURFACE - ~~BELOW~~ ON SURFACE

LEFT - & PAV'T. - RIGHT 10.7 Lt.

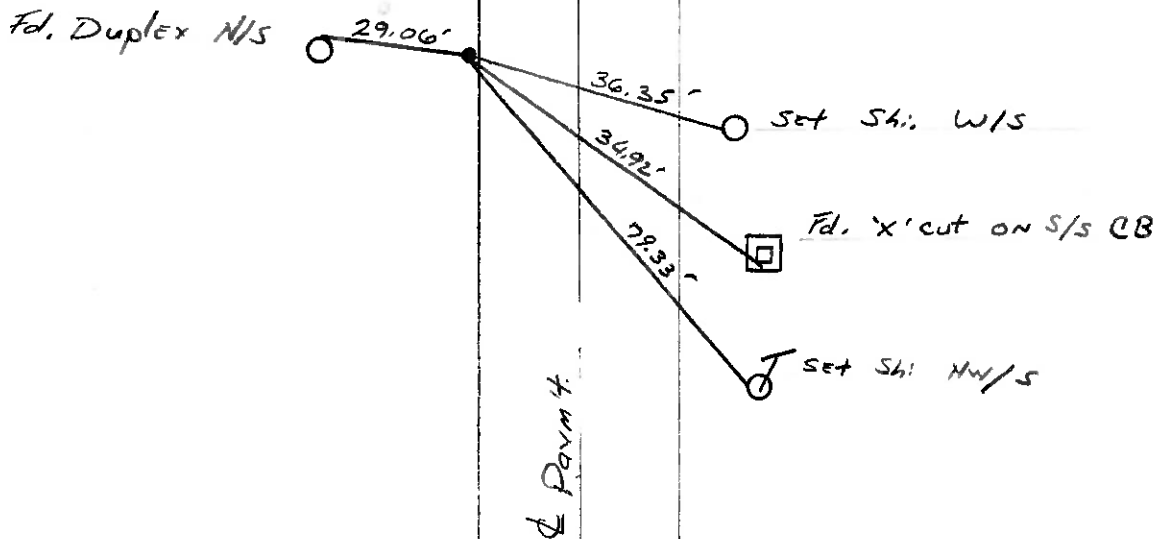
1.0' Lt TO Lt EDGE PAVEMENT

S.L.M. 12+088.42 slk (sta 399+06 slk)



Fnd. Small RR spike 1" Down
SET BY MDB 6-23-89

RESET PK & WASHER
9-28-98
MR



DRAWN BY: JR

O.D.O.T. DISTRICT 2 SURVEY OFFICE

PERSONNEL _____

REFERENCE NO. 17

SHEET 20 OF _____

NOTES BARRHISEL

H.C. " "

R.C. Locheke

DATE 3-30-89

WEATHER RAIN

TEMP. +40°

ROUTE 109

COUNTY HENRY

TOWNSHIP MONROE

SECTION 27

T A N R T E

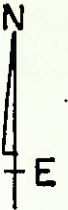
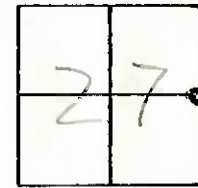
TYPE MONUMENT PK & WASHER

ON SURFACE - BELOW YES

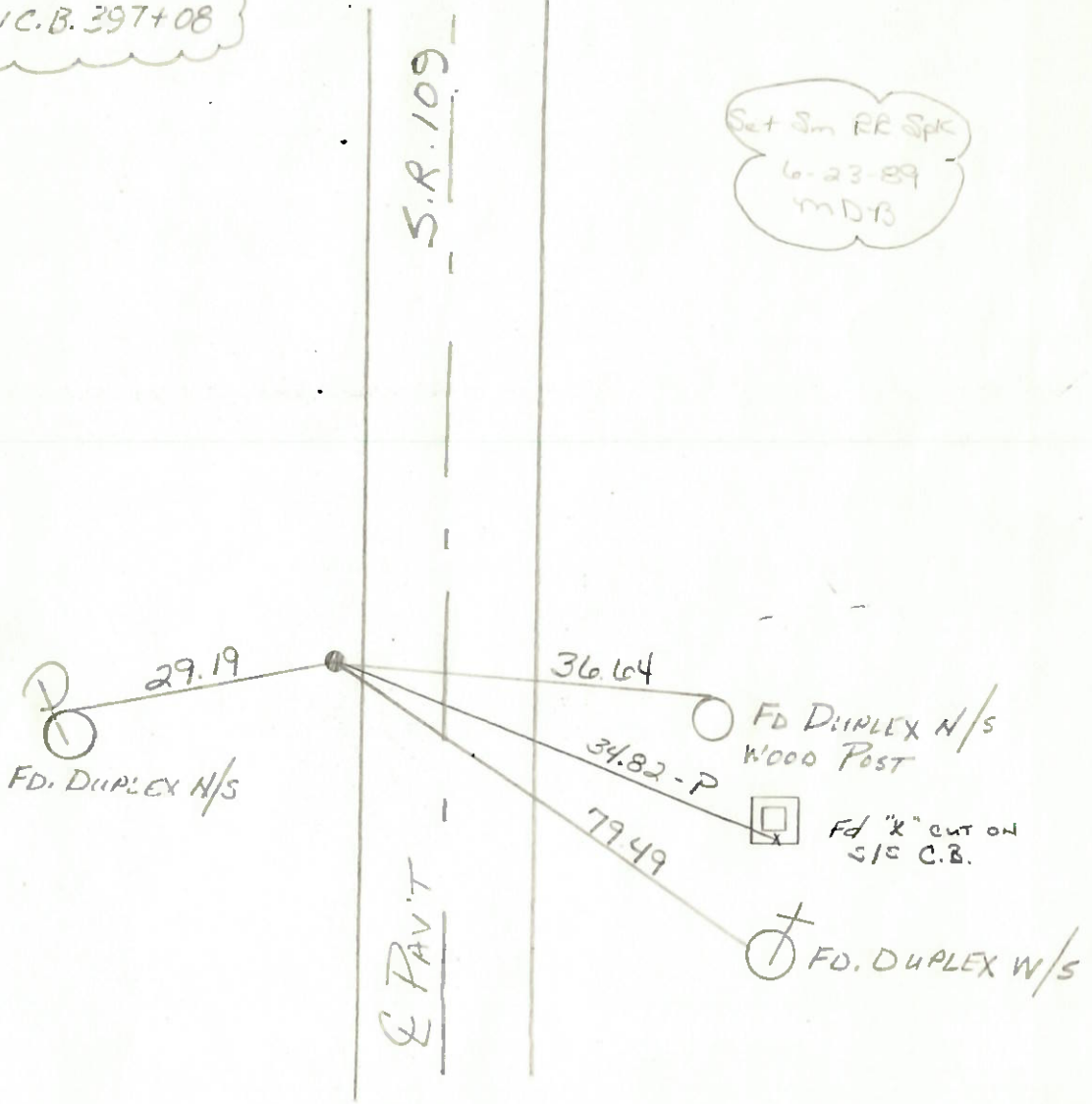
LEFT - & PAV'T. - RIGHT 10.7

TO EDGE PAVEMENT 1.0' EAST OF WEST. E.P.

S.L.M. 397+06



NOTE: NEW C.B. 397+08



ODOT. DISTRICT 2 SURVEY OFFICE

SHEET _____ OF _____

County HENRY S.R. 109

Date April 26, 83

Township MONROE

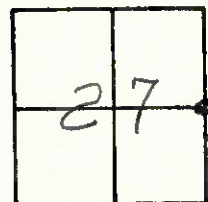
Weather CLEAR

Section 27

Temp. +65°

T4N, R7E

Personnel HOFFMAN



LOEHRKE

#17

BARNHISEL

Fd R.R. spike @ surface, SET BY COUNTY

SLM 396+34

10.7 Lt of & Post

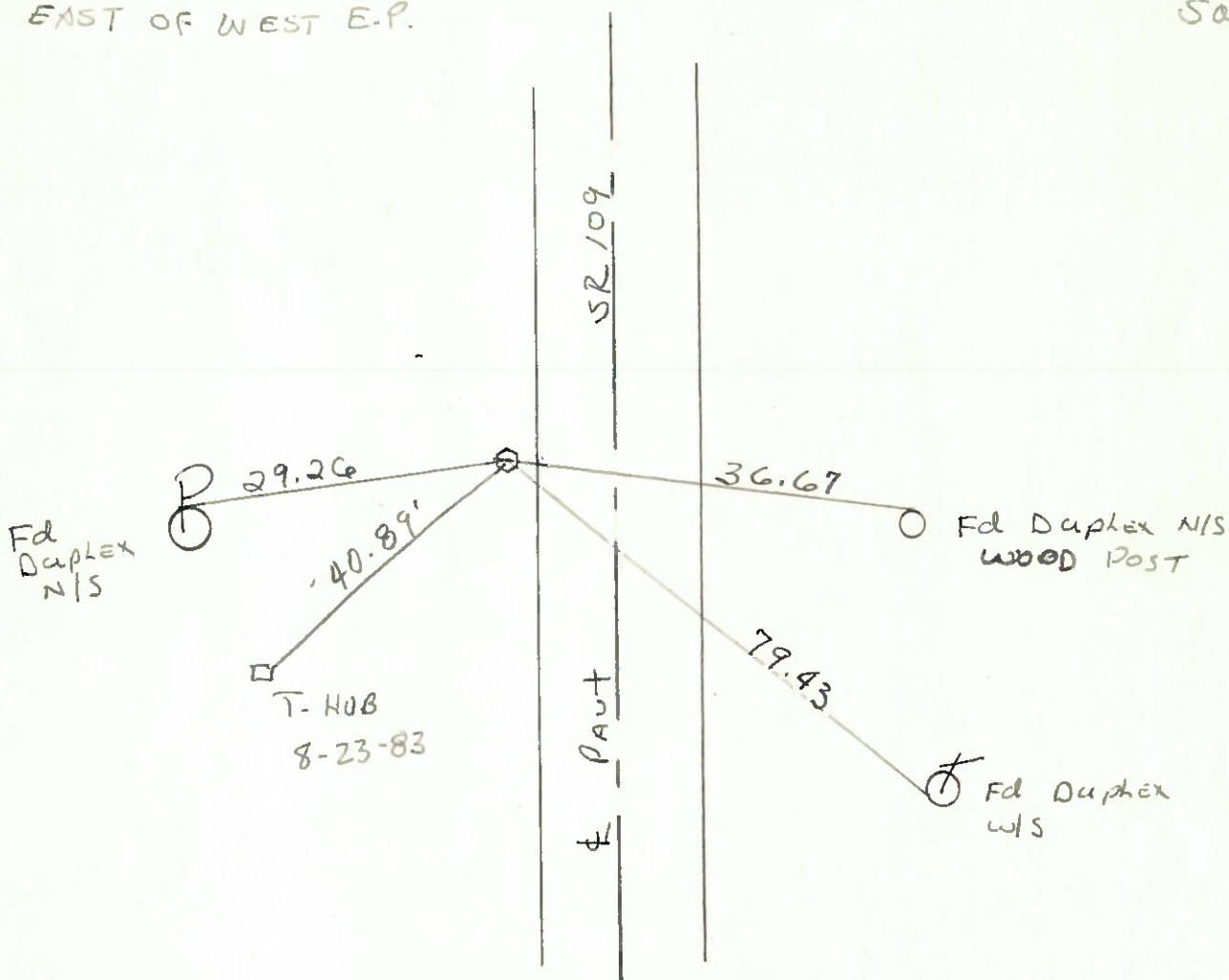
~~1.4' West of W.E.P.~~

SET P.K./WASHER

9-19-83

1' EAST OF WEST E.P.

SWH



PERSONNEL TITLE PERSONNEL TITLE
 TOMSIC _____
 NEWSI _____
 SPANZI _____

COUNTY Henry DATE Nov. 1, 1973
 S. R. 109 WEATHER _____
 SEC. MONROE TWP. TEMP _____

DESCRIPTION LEFT CENTER LINE RIGHT JOB NO.

