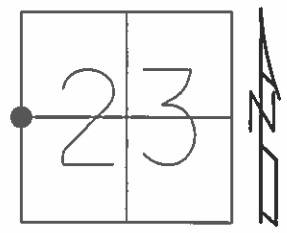


O.D.O.T. DISTRICT 2 SURVEY OFFICE (USE ONLY)

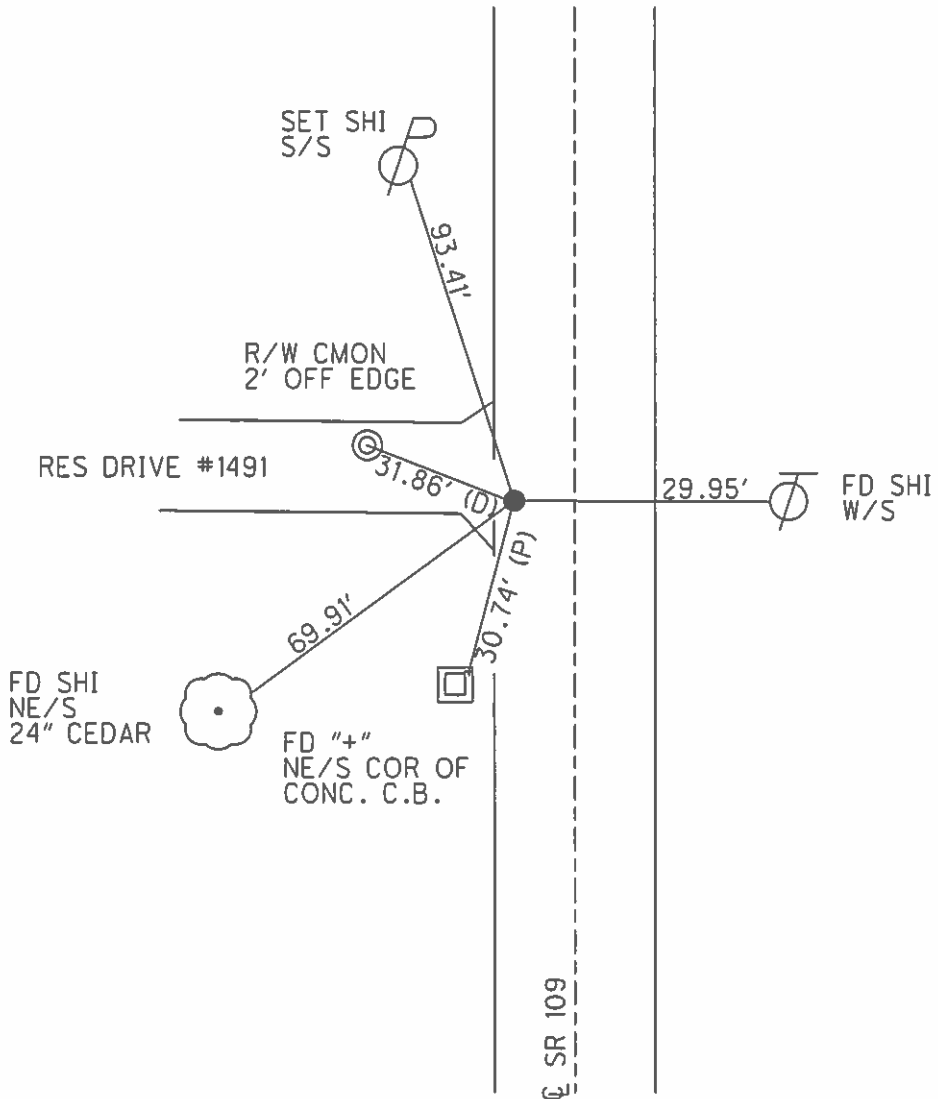
PERSONNEL \_\_\_\_\_ REFERENCE NO. 19 SHEET 2 OF 38

NOTES RHOADES DATE 9-2-15 ROUTE SR 109  
 H.C. O'DONNELL WEATHER SUNNY COUNTY HENRY  
 R.C. RHOADES TEMP. 72°F TOWNSHIP MONROE  
 \_\_\_\_\_ SECTION 23  
 \_\_\_\_\_ T 4 N R 7 E

TYPE MONUMENT MAG/WASHER  
 ON SURFACE - ~~BELOW~~ ON  
 LEFT - CL PAV'T - ~~RIGHT~~ 6.9'  
2.3' TO LT EDGE PAVEMENT  
 S.L.M. 450+07  
 Grid: Northing: 595285.4033 Easting: 1546113.6478



RECORD:  
 SET MAG/WASHER  
 10-28-04, MC  
 FD MAG/WASHER  
 GPS, REG18  
 9-2-15, JFO  
 NOT COVERED  
 8-3-16 JMR



O.D.O.T. DISTRICT 2 SURVEY OFFICE

PERSONNEL

REFERENCE NO. 19

SHEET 1 OF 23

NOTES CANTERBURY

H.C. BARNHISEL

DATE 8/30/04

ROUTE 109

R.C. HOOVER

WEATHER SUN

COUNTY HENRY

TEMP. +70

TOWNSHIP MONROE

SECTION 23

T 4 N R 7 E

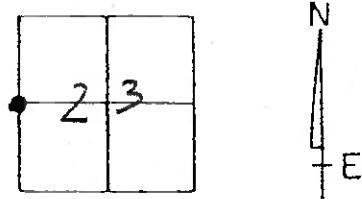
TYPE MONUMENT P.K. / WASHER

ON SURFACE - ~~BELOW~~ YES

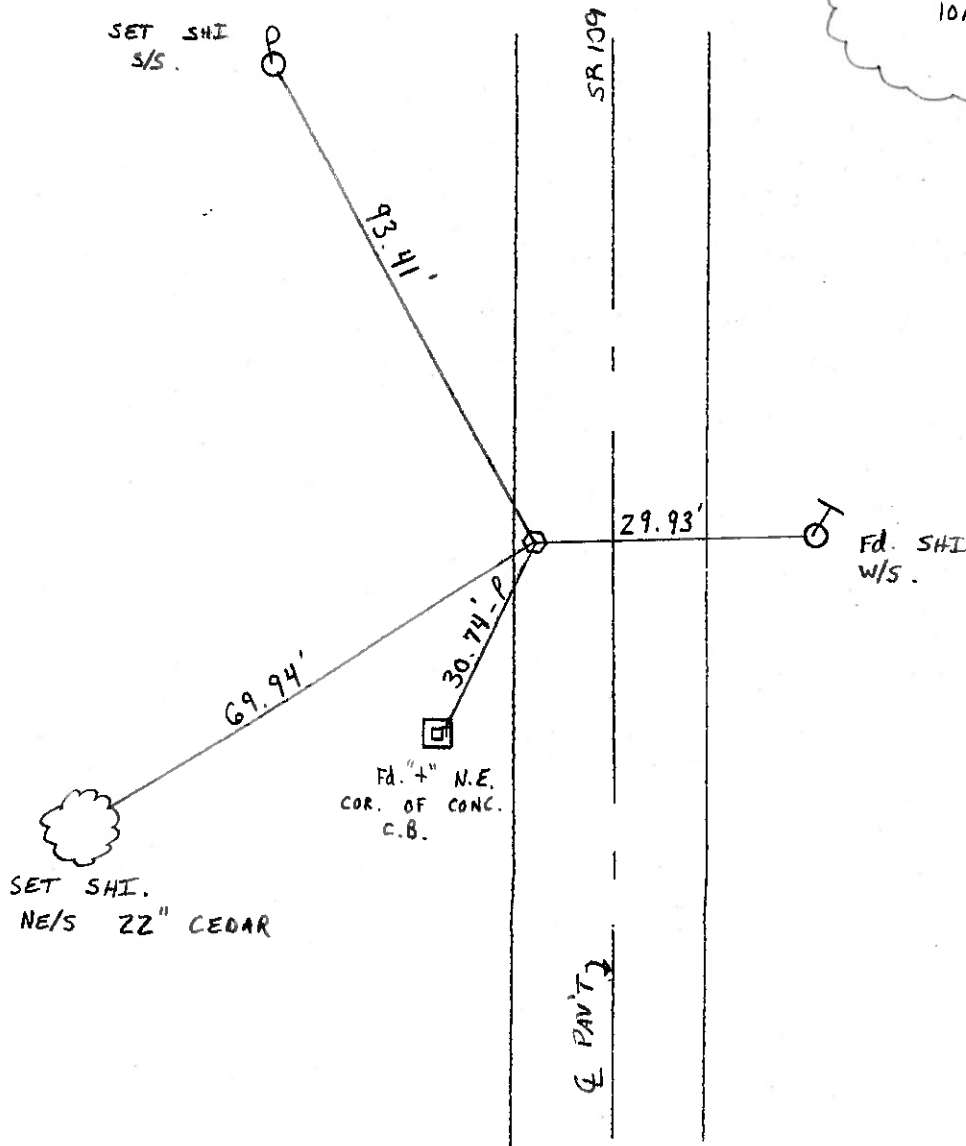
LEFT - ☉ PAV'T. - ~~RIGHT~~ 6.9' LT ☉

2.3' TO LT. EDGE PAVEMENT

S.L.M. 450+07



RESET MAG/WASHER  
10/28/04  
M.C.



Resurveyed 2004

### O.D.O.T. DISTRICT 2 SURVEY OFFICE

PERSONNEL

REFERENCE NO. 19

SHEET      OF     

NOTES BARNHISEL

H.C. KUSZ

R.C. BARNHISEL

OTTO A

DATE 8-5-93

WEATHER SUNNY

TEMP. + 25° F

ROUTE 109

COUNTY HENRY

TOWNSHIP MONROE

SECTION 23

T4 N R     

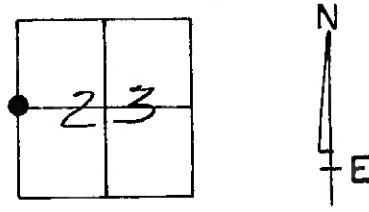
TYPE MONUMENT LARGE R.R. SPK.

ON SURFACE - ~~BELOW~~ YES

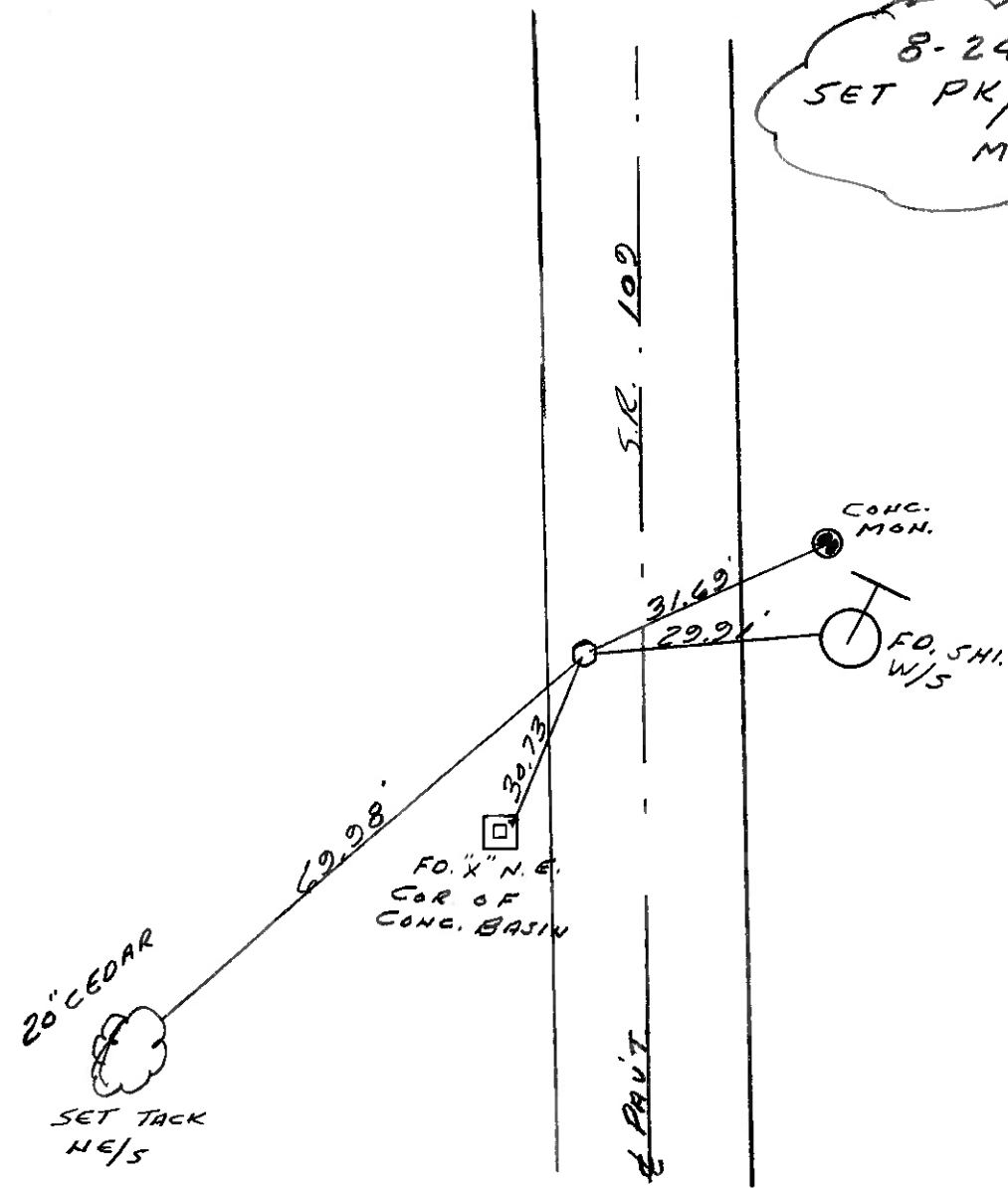
LEFT-~~E~~ PAV'T. - RIGHT 6.8

3.0 TO 17 EDGE PAVEMENT

S.L.M. 450 + 07



8-24-93  
 SET PK/WASHER  
 MB



Resurfaced 1993

### O.D.O.T. DISTRICT 2 SURVEY OFFICE

PERSONNEL

REFERENCE NO. 19

SHEET      OF     

NOTES Barnhiser

H.C. Hoffman

R.C. Loehrke

DATE 4-8-85

WEATHER clear

TEMP. +35°

ROUTE 109

COUNTY Henry

TOWNSHIP Monroe

SECTION 2

T 4 N R 7 E

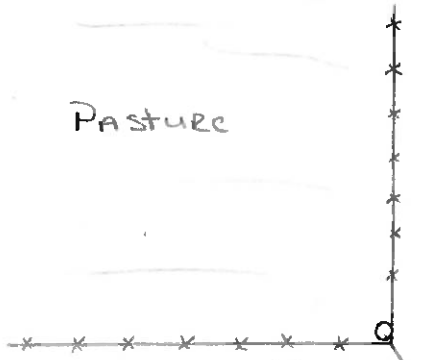
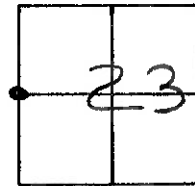
TYPE MONUMENT Lg RR / spk

ON SURFACE - ~~BELOW~~ ✓

LEFT- & PAV'T. - ~~RIGHT~~ 6.7

2.5 TO 4+ EDGE PAVEMENT

S.L.M. 449+42



PASTURE

cut "x" on  
corner fence post,  
in conc.

55.22

S.R. 109

Set PK/WASHER  
5-8-85  
MDB

31.69



Conc Mon.

29.54



Set SHI  
W/S

32.59

Set SHI  
E/S



70.06



30.76

Fd "x" NE Cor of

Conc. Basin

18" CEDAR

Set SHI  
NE/S



E PAV'T