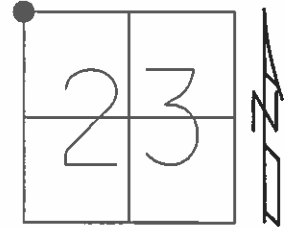


O.D.O.T. DISTRICT 2 SURVEY OFFICE (USE ONLY)

PERSONNEL _____ REFERENCE NO. 20 SHEET 3 OF 38
 NOTES BAENHISEL DATE 4-8-85 ROUTE SR 109
 H.C. HOFFMAN WEATHER CLEAR COUNTY HENRY
 R.C. LOEHRKE TEMP. 35°F TOWNSHIP MONROE
 _____ SECTION 23
 _____ T 4 N R 7 E

TYPE MONUMENT BOAT SPIKE
 ON SURFACE - ~~BELOW~~ ON _____
 LEFT - ☉ PAV'T - ~~RIGHT~~ 267'
7.0' TO RT EDGE PAVEMENT
 S.L.M. 476+40

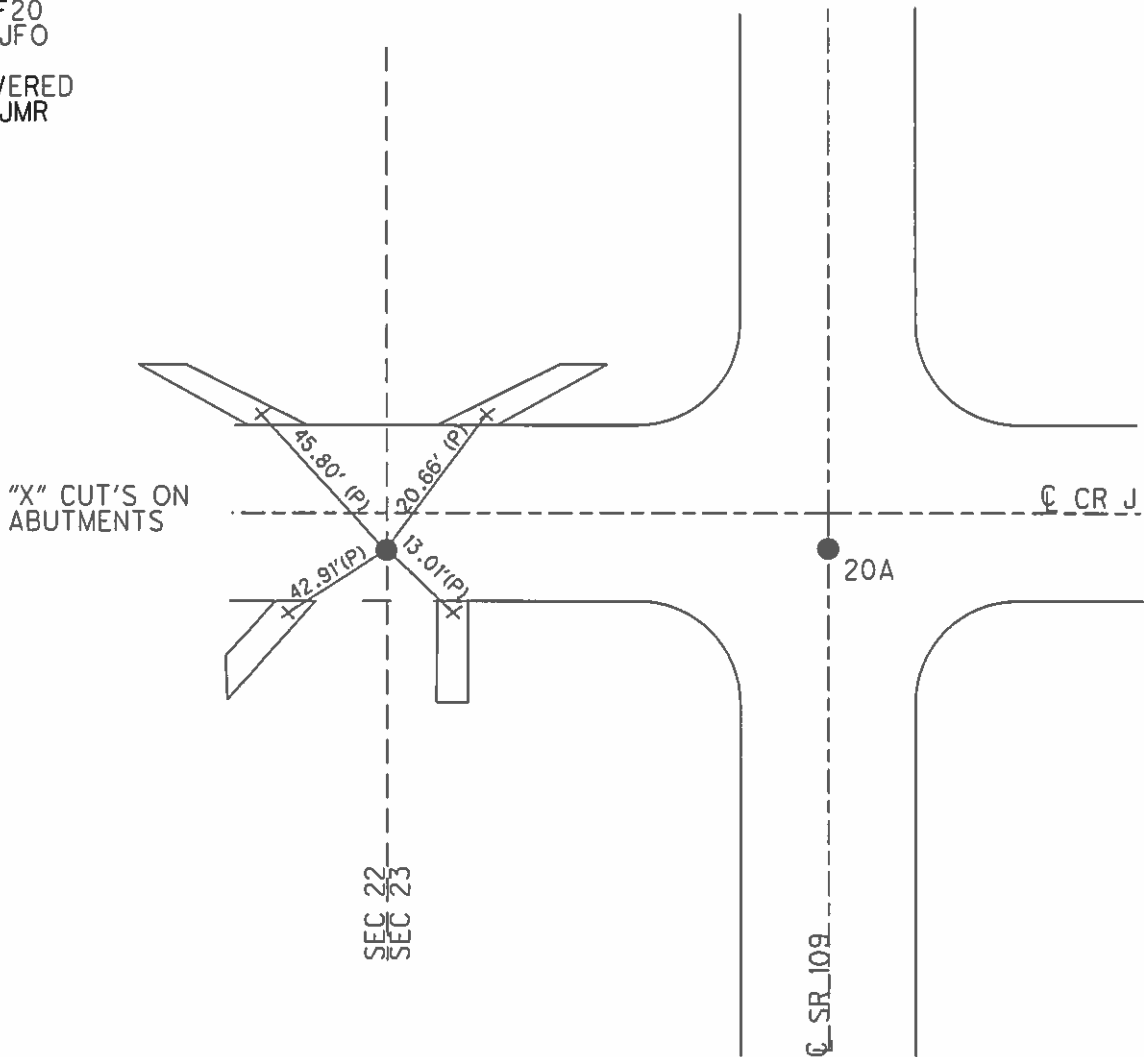


Grid: Northing: 597935.23 Easting: 1546141.0708

RECORD:
 FD MAG/WASHER
 GPS, REF20
 9-2-15, JFO

DIST. 20-20A= 267'

NOT COVERED
 8-3-16, JMR



O.D.O.T. DISTRICT 2 SURVEY OFFICE

PERSONNEL

REFERENCE NO. 20

SHEET OF

NOTES Baenzel

H.C. Hoffman

R.C. Loehrke

DATE 4-8-85

WEATHER clear

TEMP. +35°

ROUTE 109

COUNTY Henry

TOWNSHIP Monroe

SECTION 23

T 4 N R 7 E

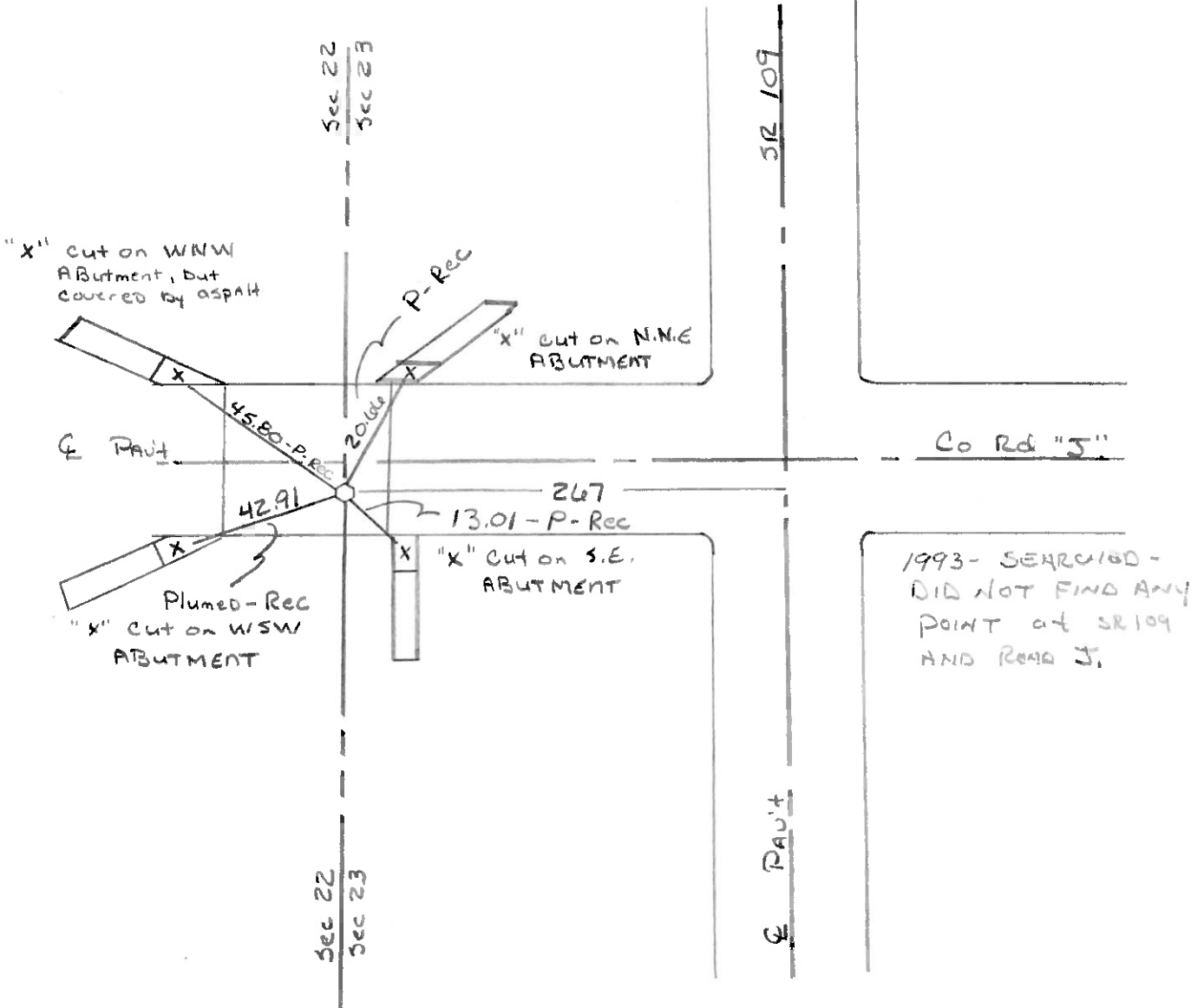
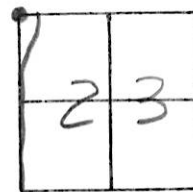
TYPE MONUMENT Boat SPIKE

~~ON~~ SURFACE - BELOW

~~LEFT~~ - ~~Q~~ PAV'T. - RIGHT 5.3

70 TO Rt EDGE PAVEMENT

S.L.M. 476+40 "to" -

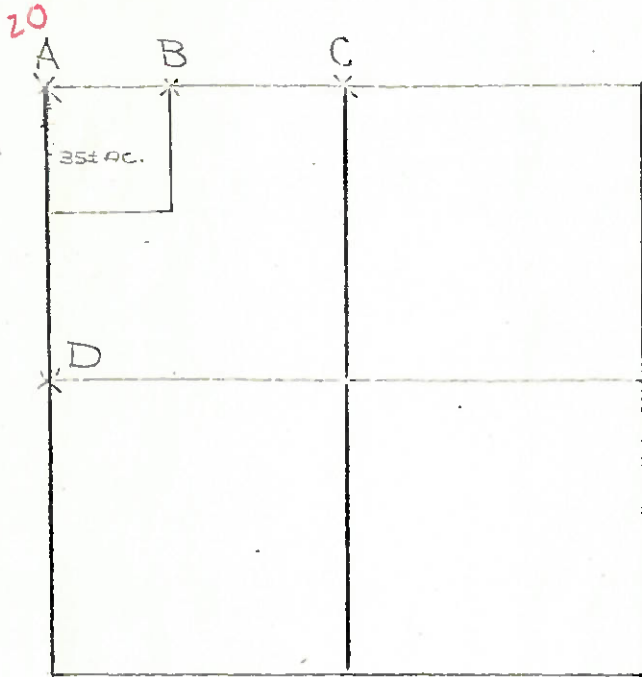


COUNTY HENRY

TOWNSHIP MONROE

SECTION 23

T 4 N . R 7 E



4-27-79 R.W, J.J.

C - FOUND STONE (6" x 13' x 11") 26"
BELOW ROAD SURFACE. ALSO FOUND
SMALLER STONE AND BRICK BATS ON
TOP OF STONE. REMOVED SMALL
STONE & BRICK BATS AND PLACED
CENTER PUNCHED R.R. SPIKE ON
SURFACE OVER HIGH POINT OF STONE.

P.K.'s 6' N. & W. STONE IS 4.0' NORTH OF SOUTH EDGE OF 18' PAVEMENT
14.11' S.E. TO IRON PIN ON DITCH BANK (PLUMBED)
14.84 S.W. TO IRON PIN ON DITCH BANK (PLUMBED)

7-10-79 R.W, J.J, G.M.

D - FOUND RAILROAD SPIKE 0.16' NORTH AND 0.08' EAST OF
HIGH POINT OF STONE (9" x 12" x 10") 18" BELOW ROAD SURFACE
REMOVED RAILROAD SPIKE AND PLACED CENTER PUNCHED
RAILROAD SPIKE ON SURFACE OVER HIGH POINT OF STONE.

P.K.'s 6' N. & E.

STONE IS 2.8' EAST OF WEST EDGE OF 18' PAVEMENT
31.78' W. N. W. TO STATE R/W MONUMENT (PLUMBED)
31.67' E. N. E. TO STATE R/W MONUMENT (PLUMBED)
30.70' W. S. W. TO "T" N.E. COR. CONC. CATCH BASIN (PLUMBED)