

O.D.O.T. DISTRICT 2 SURVEY OFFICE (USE ONLY)

PERSONNEL _____ REFERENCE NO. 21 SHEET 5 OF 38

NOTES RHOADES DATE 9-2-15 ROUTE SR 109
 H.C. O'DONNELL WEATHER SUNNY COUNTY HENRY
 R.C. RHOADES TEMP. 72°F TOWNSHIP MONROE
 _____ SECTION 14
 _____ T 4 N R 7 E

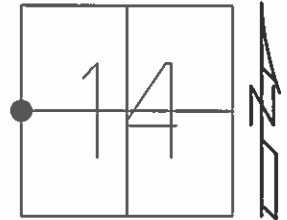
TYPE MONUMENT MAG/WASHER

ON SURFACE - ~~BELOW~~ ON _____

LEFT - ☉ PAV'T - ~~RIGHT~~ 4.0', 10' ☉ CR J-2
5.7' TO LT EDGE PAVEMENT

S.L.M. 504+10

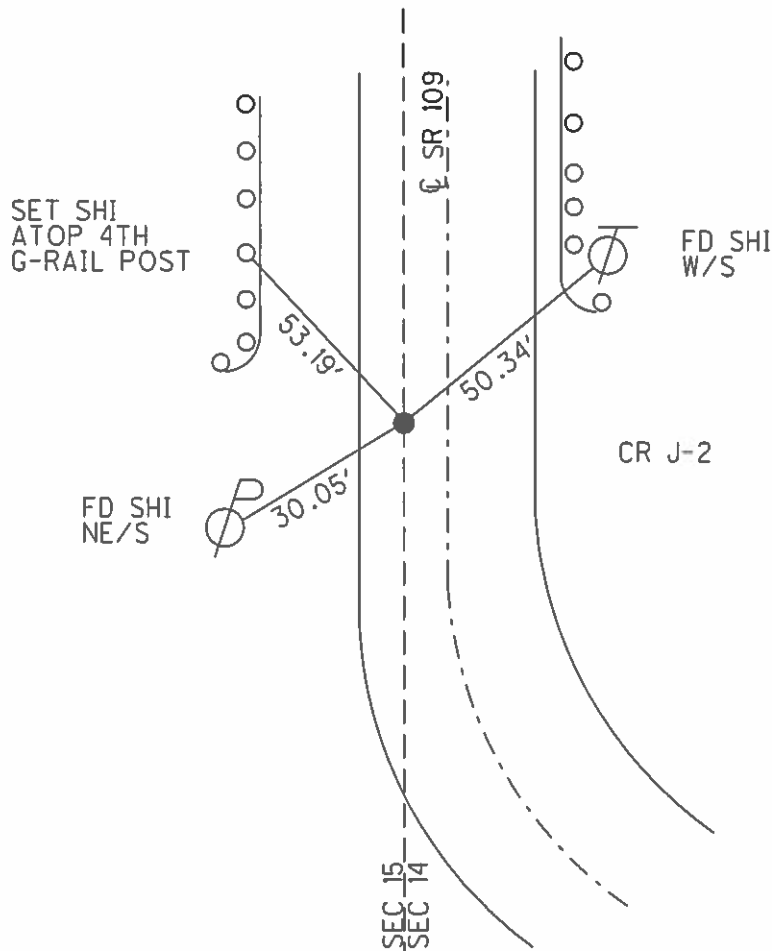
Grid: Northing: 600585.8686 Easting: 1546137.6276



RECORD:
 SET MAG/WASHER
 10-28-04, MC

FD MAG NAIL
 GPS, REF21
 9-2-15, JFO

UNCOVERED
 8-3-16, JMR



O.D.O.T. DISTRICT 2 SURVEY OFFICE

PERSONNEL

REFERENCE NO. 21

SHEET 4 OF 23

NOTES CANTERBURY

H.C. BARNHISEL

R.C. HOOVER

DATE 9/30/04

WEATHER SUN

TEMP. +75

ROUTE 109

COUNTY HENRY

TOWNSHIP MONROE

SECTION 14

T 4 N R 7 E

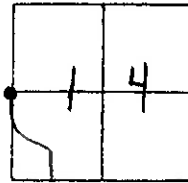
TYPE MONUMENT P.K / WASHER

ON SURFACE - ~~BELOW~~ SURFACE

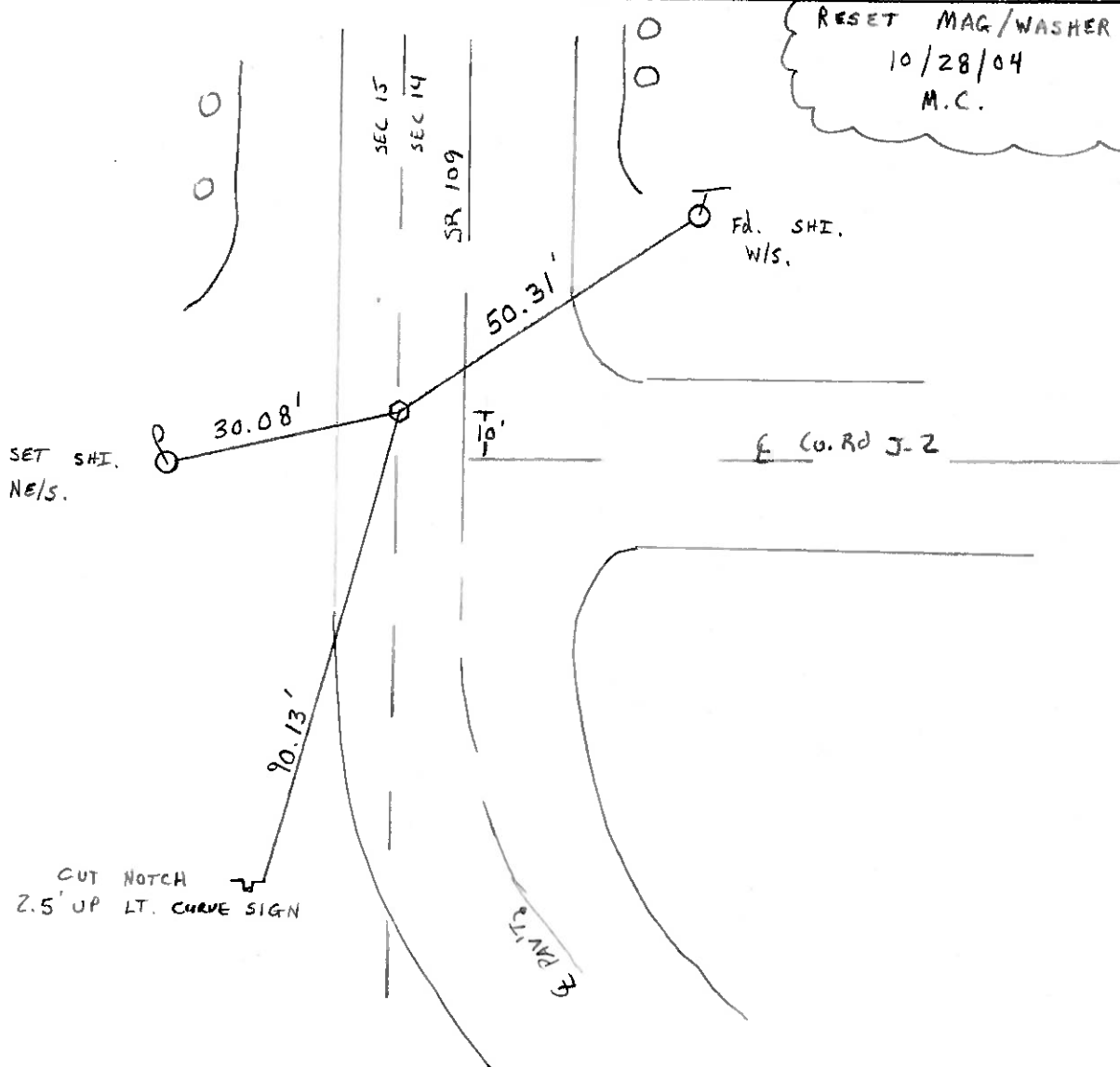
LEFT - ~~Q~~ PAV'T. - RIGHT 4.0' LT E

5.7' TO LT. EDGE PAVEMENT

S.L.M. 504 + 10



RESET MAG/WASHER
10/28/04
M.C.



O.D.O.T. DISTRICT 2 SURVEY OFFICE

PERSONNEL

REFERENCE NO. 21

SHEET OF

NOTES BARNHISEL

H.C. KUSZ

DATE 8-5-93

ROUTE 109

R.C. BARNHISEL

WEATHER SUNNY

COUNTY HENRY

OTTO A

TEMP. +75° F

TOWNSHIP MONROE

SECTION 14

T4 NR 7 E

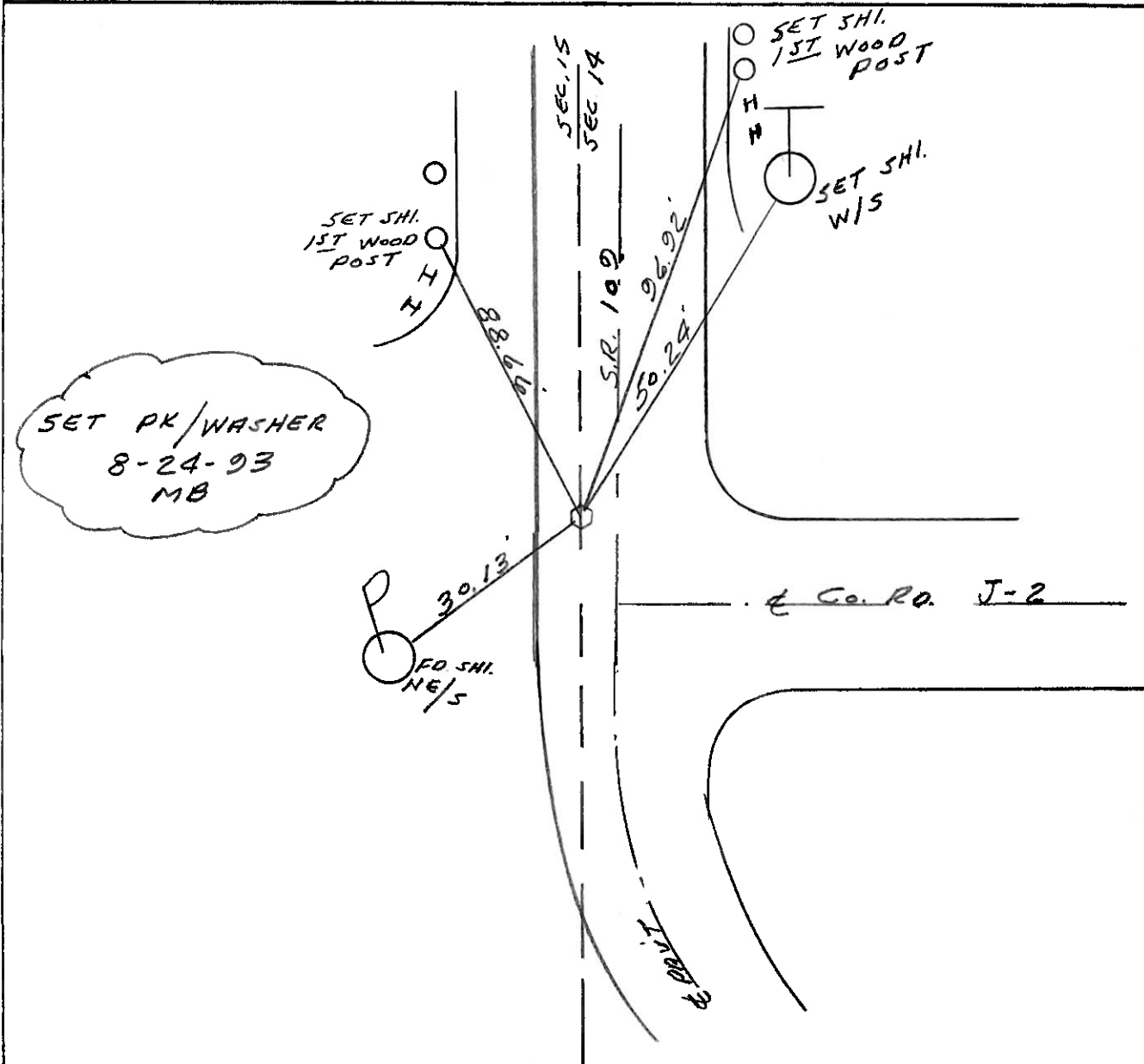
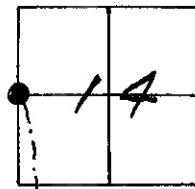
TYPE MONUMENT LARGE RR. SPK. "PUNCH HOLE"

ON SURFACE - BELOW YES

LEFT-☉ PAV'T. - RIGHT 3.4

6.4 TO LT. EDGE PAVEMENT

S.L.M. 504 + 10



O.D.O.T. DISTRICT 2 SURVEY OFFICE

PERSONNEL _____

REFERENCE NO. 21

SHEET _____ OF _____

NOTES Barnhisel

H.C. Hoffman

DATE 4-8-85

ROUTE 109

R.C. Loehrke

WEATHER clear

COUNTY Henry

TEMP. +35.0

TOWNSHIP Monroe

SECTION 14

T 4 N R 7 E

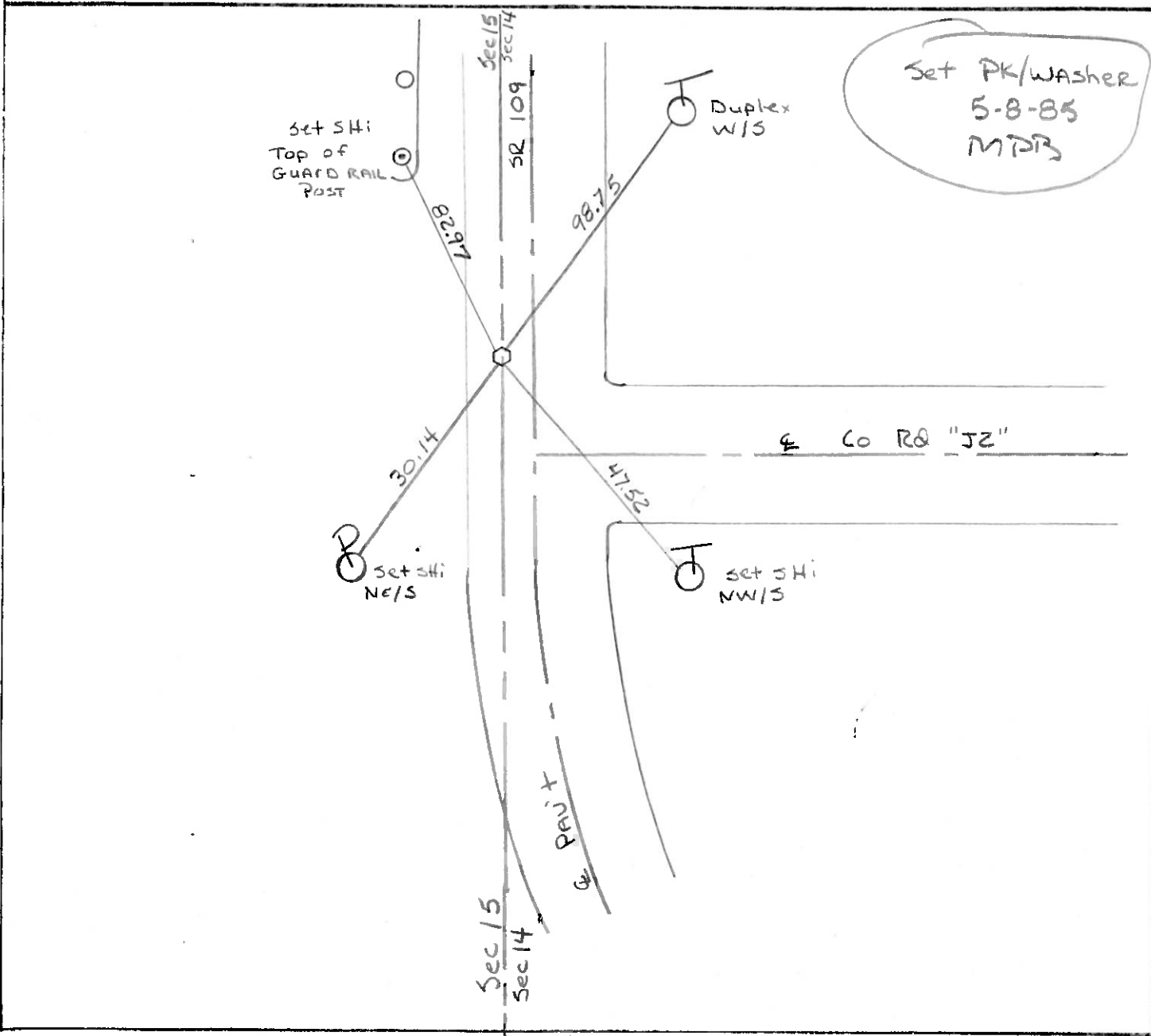
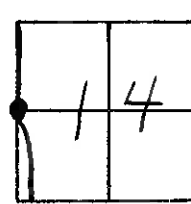
TYPE MONUMENT Lg RR/spk Punch Hole

ON SURFACE - ~~BELOW~~ ✓

LEFT-~~☉~~ PAV'T. - ~~RIGHT~~ 3.3

5.6 TO Lt EDGE PAVEMENT

S.L.M. 503+52

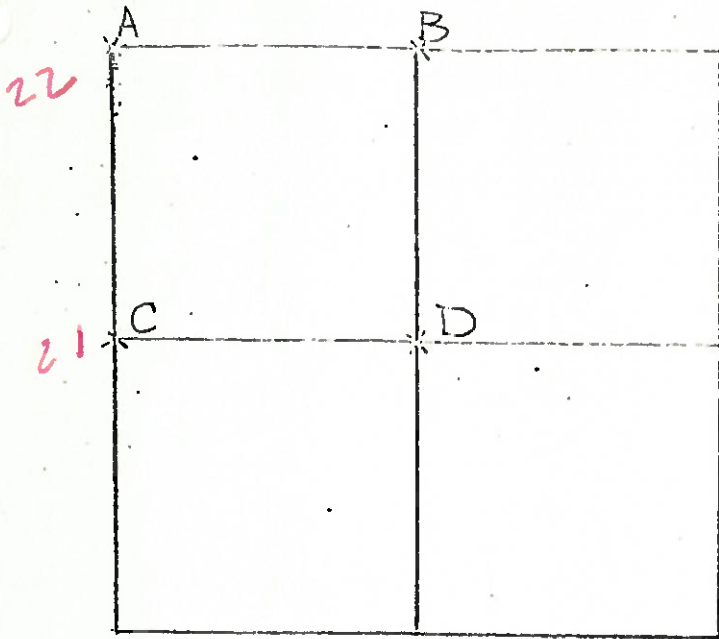


COUNTY HENRY

T 1 N , R 7 E

TOWNSHIP MONROE S.R. 109

SECTION 14



7-13-79 P.M. J.J. G.M.
 C - FOUND STONE (6" x 7" x 8")
 20" BELOW ROAD SURFACE
 PLACED CENTER PUNCHED
 R.R. SPIKE ON SURFACE
 OVER HIGH POINT OF STONE
 P.K.'S SET 6' N. & E
 98.53' N.N.E. TO DUPLEX ^{W/S} ₀
 47.76' S.E. TO DUPLEX ^{W/S} ₆
 30.44' S.W. TO DUPLEX ^{SE/S} ₀

5-1-79 R.W, J.J.

D - FOUND IRON PIPE AND STONE LEANING TO THE SOUTH. PLACED STONE
 IN VERTICAL POSITION FROM RECORDED WITNESS TIES. PLACED IRON
 PIPE ON ^{W/S} OF STONE ANGLED OVER HIGH POINT OF STONE. TOP OF
 PIPE OVER HIGH POINT. STONE IS 12" BELOW GROUND LEVEL.
 21.65' E.S.E. TO "+" IN NORTH END OF EAST HEADWALL (PLUMBED)
 9.73' S.E. TO "+" IN NORTH END OF WEST HEADWALL (PLUMBED)
 14.82' S.S.E. TO "+" IN SOUTH END OF WEST HEADWALL (PLUMBED)