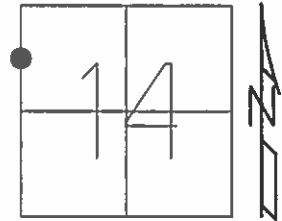


O.D.O.T. DISTRICT 2 SURVEY OFFICE (USE ONLY)

PERSONNEL _____ REFERENCE NO. 21 A SHEET 6 OF 38
 NOTES RHOADES DATE 9-2-15 ROUTE SR 109
 H.C. O'DONNELL WEATHER SUNNY COUNTY HENRY
 R.C. RHOADES TEMP. 72°F TOWNSHIP MONROE
 _____ SECTION 14
 _____ T 4 N R 7 E

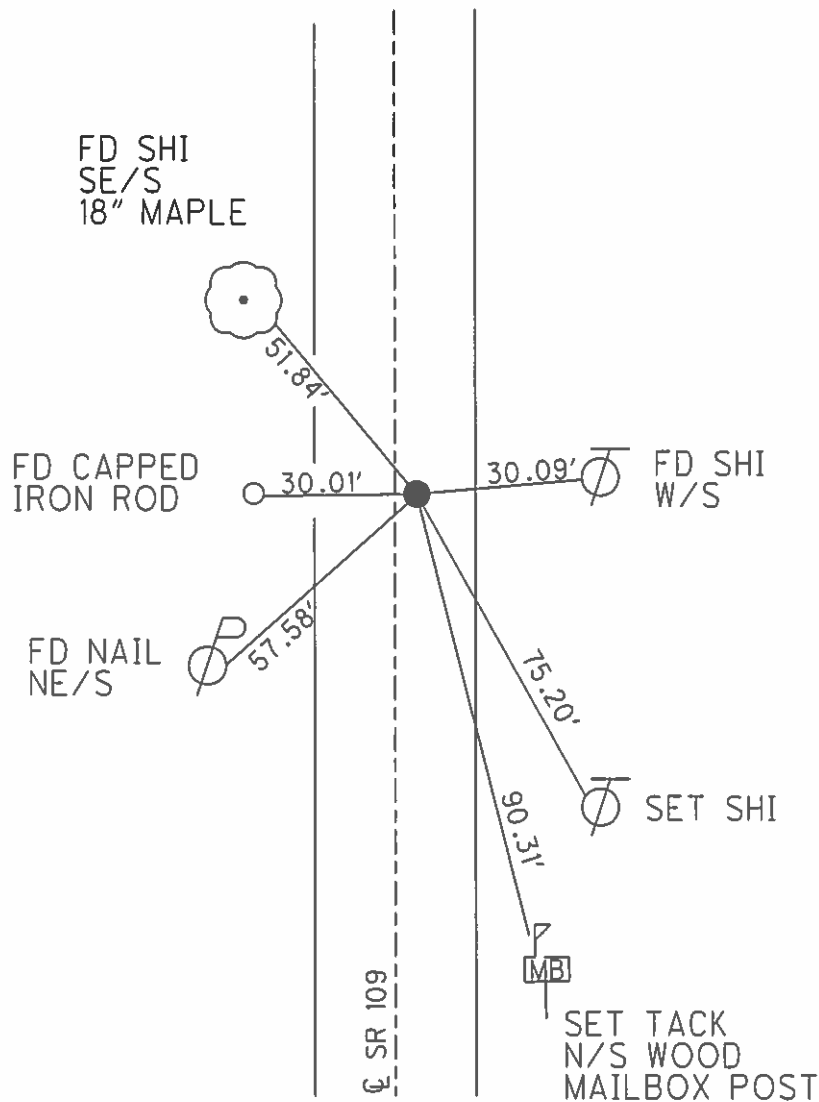
TYPE MONUMENT MAG/WASHER
 ON SURFACE - ~~BELOW~~ ON _____
~~LEFT~~ - Q PAV'T - RIGHT 0.5'
9.1' TO RT EDGE PAVEMENT
 S.L.M. 517+32
 Grid: Northing: 601909.2996 Easting: 1546144.5022



RECORD:
 SET MAG/WASHER
 10-28-04, MC

FD MAG NAIL
 GPS, REF21
 9-2-15, JFO

UNCOVERED
 8-3-16, JMR



O.D.O.T. DISTRICT 2 SURVEY OFFICE

PERSONNEL _____

REFERENCE NO. 21-A

SHEET 5 OF 23

NOTES CANTERBURY

H.C. BARNHISEL

DATE 8/31/04

ROUTE 109

R.C. HOOVER

WEATHER SUN

COUNTY HENRY

TEMP. +65°

TOWNSHIP MONROE

SECTION 14

T 4 N R 7 E

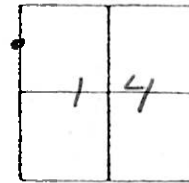
TYPE MONUMENT P.K. / WASHER

ON SURFACE - ~~BELOW~~ SURFACE

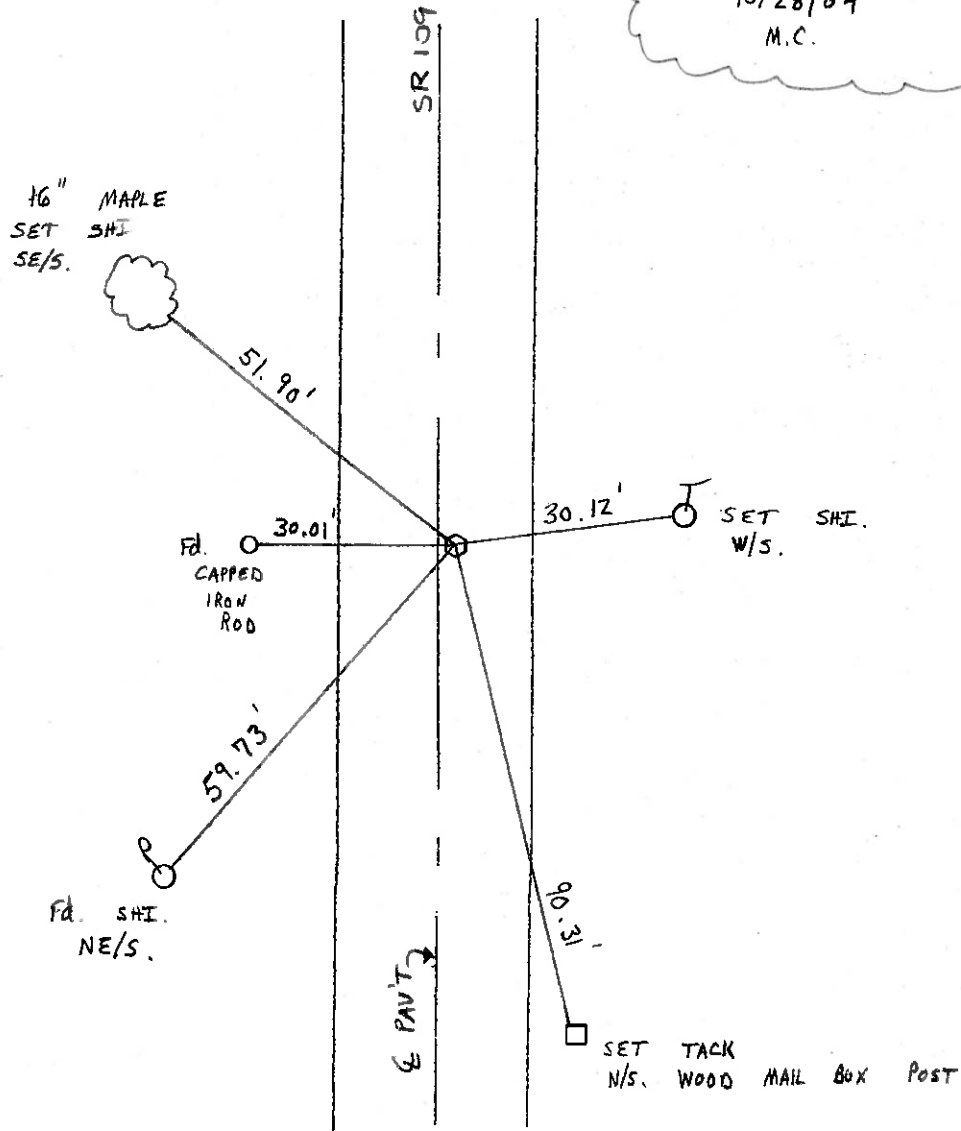
~~LEFT - & PAV'T.~~ - RIGHT 0.5' RT &

9.1' TO RT. EDGE PAVEMENT

S.L.M. 517 +32



RESET MAG/WASHER
 10/28/04
 M.C.



O.D.O.T. DISTRICT 2 SURVEY OFFICE

PERSONNEL

REFERENCE NO. 21-A

SHEET OF

NOTES BARNHISEL

H.C. KUSZ

DATE 8-5-93

ROUTE 109

R.C. BARNHISEL

WEATHER SUNNY

COUNTY HENRY

OTTO

TEMP. +75°F

TOWNSHIP MONROE

SECTION 14

T4 NR 7 E

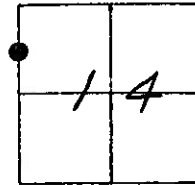
TYPE MONUMENT LARGE R.R. SPK.

ON SURFACE - ~~BELW~~ YES

~~LEFT~~ - 0.5 PAV'T. - RIGHT 0.5

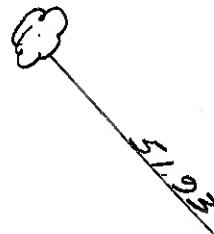
10.3 TO 12.7 EDGE PAVEMENT

S.L.M. 517+32



SET PK/WASHER
 8-24-93
 MB

12" MAPLE
SET TACK
SE/S



IRON
PIN

SET SHI.
NE/S

SET TACK
N/S MAIL BOX
POST

S.R. 109

PAV'T.

O.D.O.T. DISTRICT 2 SURVEY OFFICE

PERSONNEL _____

REFERENCE NO. 21-A

SHEET _____ OF _____

NOTES BARNHISEL

H.C. Hoffman

R.C. Loehrke

DATE 4-8-85

WEATHER clear

TEMP. +35°

ROUTE 109

COUNTY Henry

TOWNSHIP Monroe

SECTION 14

T. 4 N. R. 7 E.

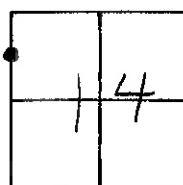
TYPE MONUMENT Lg RR / spk

ON SURFACE - ~~BELOW~~ ✓

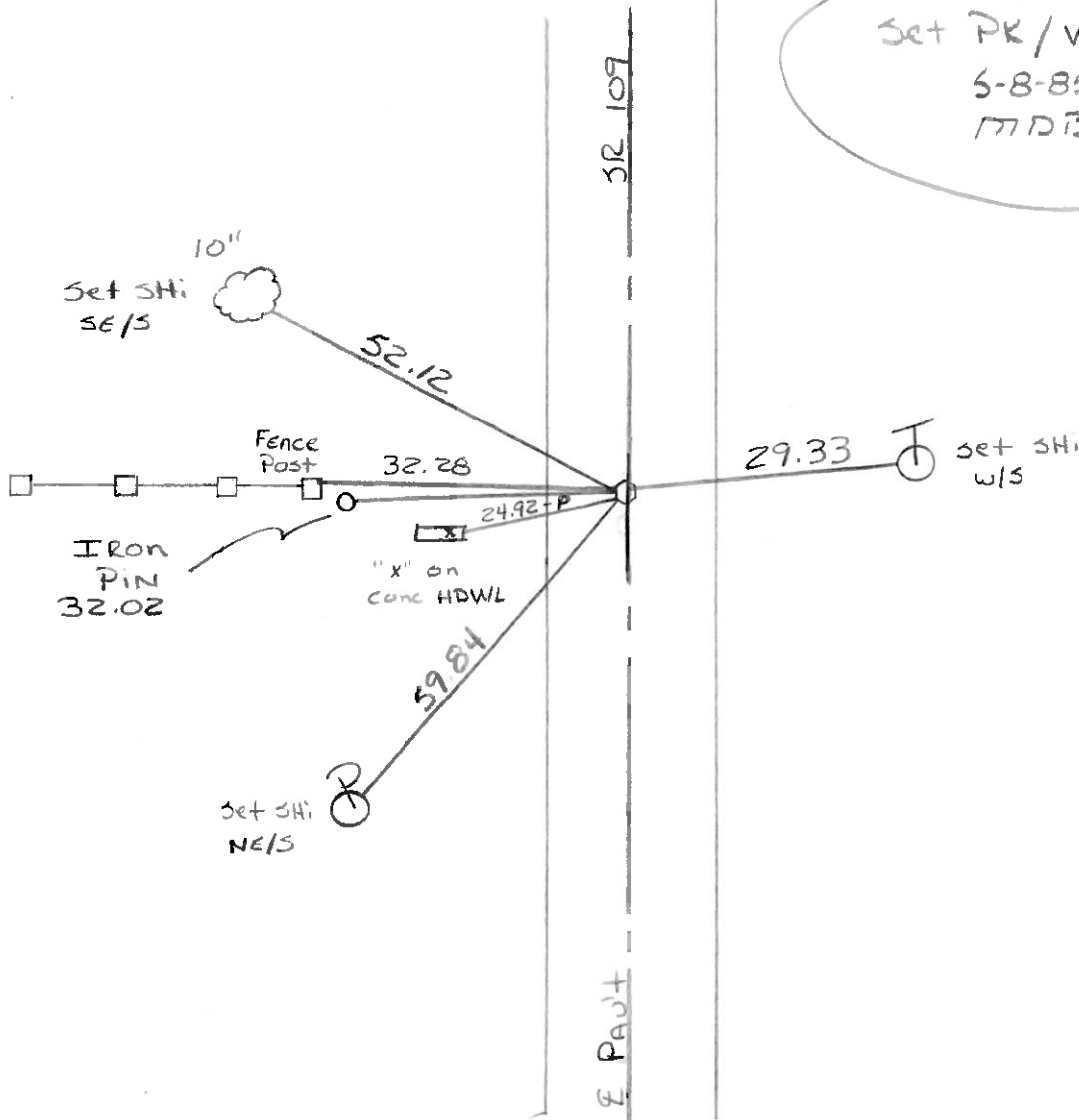
LEFT - ~~PAV'T.~~ - RIGHT 0.5

0.4 TO RT EDGE PAVEMENT

S.L.M. 516+75



Set PK / Washer
 6-8-85
 MJD B



OD.O.T. DISTRICT 2 SURVEY OFFICE

SHEET 16 OF

County HENRY S.R. 18-109

Township MARION

Section 3

T3N, R7E

Personnel S. Hoffmann

C. Doehrke

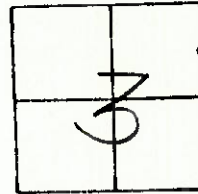
J. Householder

21-A

Date 5-29-81

Weather PARTLY CLOUDY

Temp. +75°



4-25-83
Clear
+600
SINK
+
CROW

Hex 18 SLM =
538 +69

YES Fd. STONE 2" Below surface
10.0' west of W.F.P.
19.7 West of & Part SR 18/109

PLACED 8" long BRONZE
PIECE OF STEEL TRACK
SPRING OVER STONE

