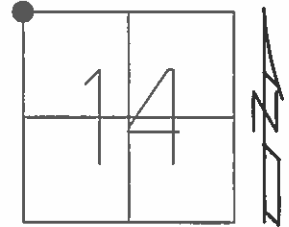


O.D.O.T. DISTRICT 2 SURVEY OFFICE (USE ONLY)

PERSONNEL \_\_\_\_\_ REFERENCE NO. 22 SHEET 7 OF 38  
 NOTES RHOADES DATE 9-2-15 ROUTE SR 109  
 H.C. O'DONNELL WEATHER SUNNY COUNTY HENRY  
 R.C. RHOADES TEMP. 72°F TOWNSHIP MONROE  
 \_\_\_\_\_ SECTION 14  
 \_\_\_\_\_ T 4 N R 7 E

TYPE MONUMENT MAG/WASHER  
 ON SURFACE - ~~BELOW~~ ON \_\_\_\_\_  
 LEFT - ☉ PAV'T - ~~RIGHT~~ 1.0'  
8.9' TO LT EDGE PAVEMENT  
 S.L.M. 530+56

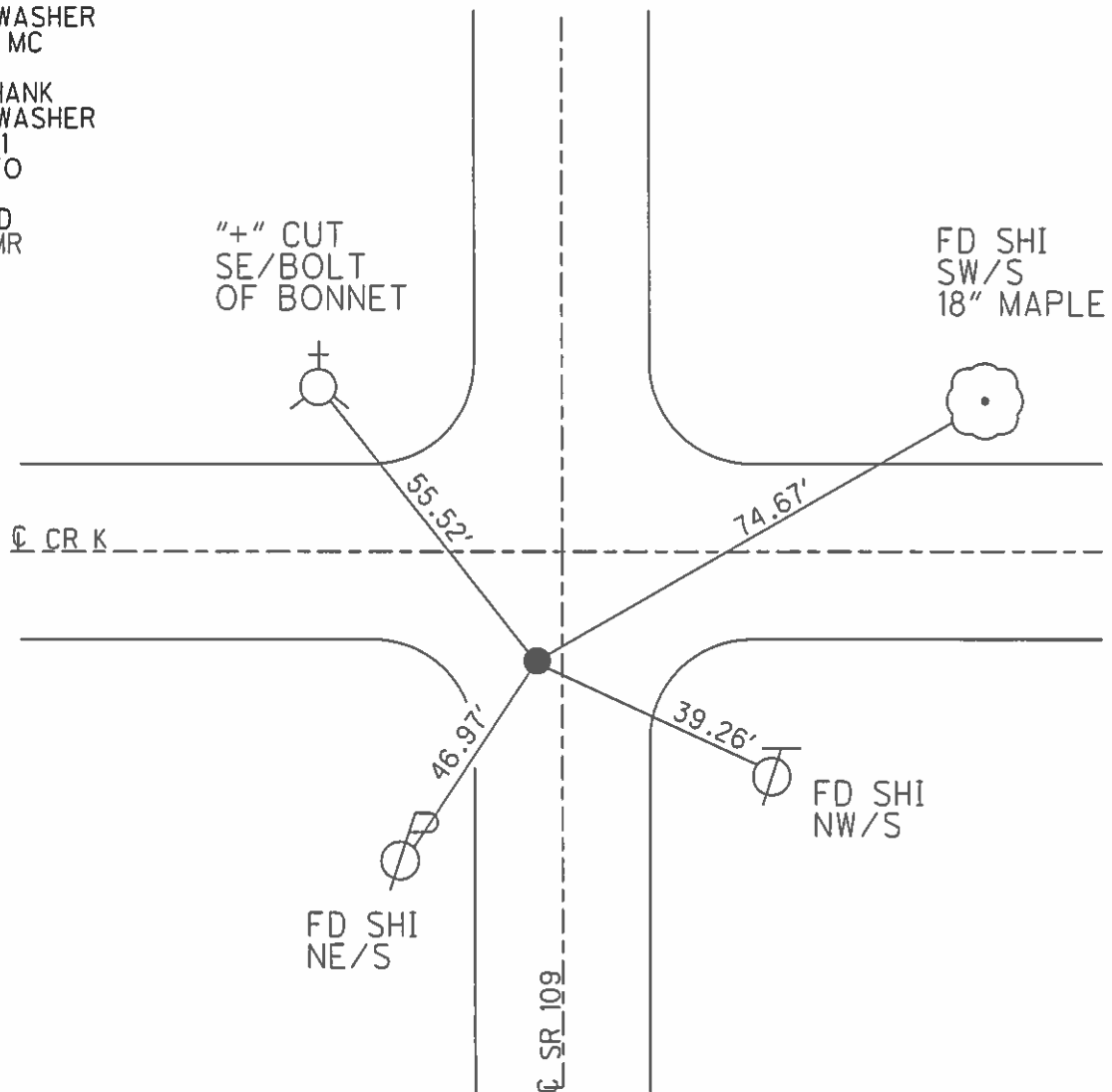


Grid: Northing: 603233.0863 Easting: 1546151.3797

RECORD:  
 SET MAG/WASHER  
 10-28-04, MC

FD MAG SHANK  
 SET MAG/WASHER  
 GPS, REF21  
 9-2-15, JFO

UNCOVERED  
 8-3-16, JMR



# O.D.O.T. DISTRICT 2 SURVEY OFFICE

PERSONNEL

REFERENCE NO. 22

SHEET 6 OF 23

NOTES CANTERBURY

H.C. BARNHISEL

DATE 8/31/04

ROUTE 109

R.C. HOOVER

WEATHER SUN

COUNTY HENRY

TEMP. +65°

TOWNSHIP MONROE

SECTION 14

T4 N R 7 E

TYPE MONUMENT P.K. / WASHER

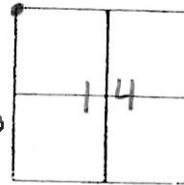
ON SURFACE - ~~BELOW~~ SURFACE

LEFT - PAV'T. - ~~RIGHT~~ 1.0' LT &

8.9' TO LT EDGE PAVEMENT ON S. EDGE OF PAVT. EXTENDED

S.L.M. 530 + 56

CO. RD. "K" EAST



RESET MAG/WASHER

10/28/04

M.C.

S.R. 109

TOP CENTER  
BOLT FIRE HYDRANT

SET SHI.  
14" MAPLE  
SW/S

← E PAV'T

74.70'

CO. RD "K"

55.82'

47.00'

SET SHI  
NE/S

39.29'

SET SHI  
NW/S

← E PAV'T

O.D.O.T. DISTRICT 2 SURVEY OFFICE

PERSONNEL

REFERENCE NO. 22

SHEET      OF     

NOTES BARNHISEL

H.C. VAN DUJEN

DATE 8-17-93

ROUTE 109

R.C. KUSZ

WEATHER Fog

COUNTY HENRY

TEMP. +81°F

TOWNSHIP MONROE

SECTION 14

T 4 N R 2 E

TYPE MONUMENT LARGE RR SPK. PUNCH HOLE

ON SURFACE - BELOW YES

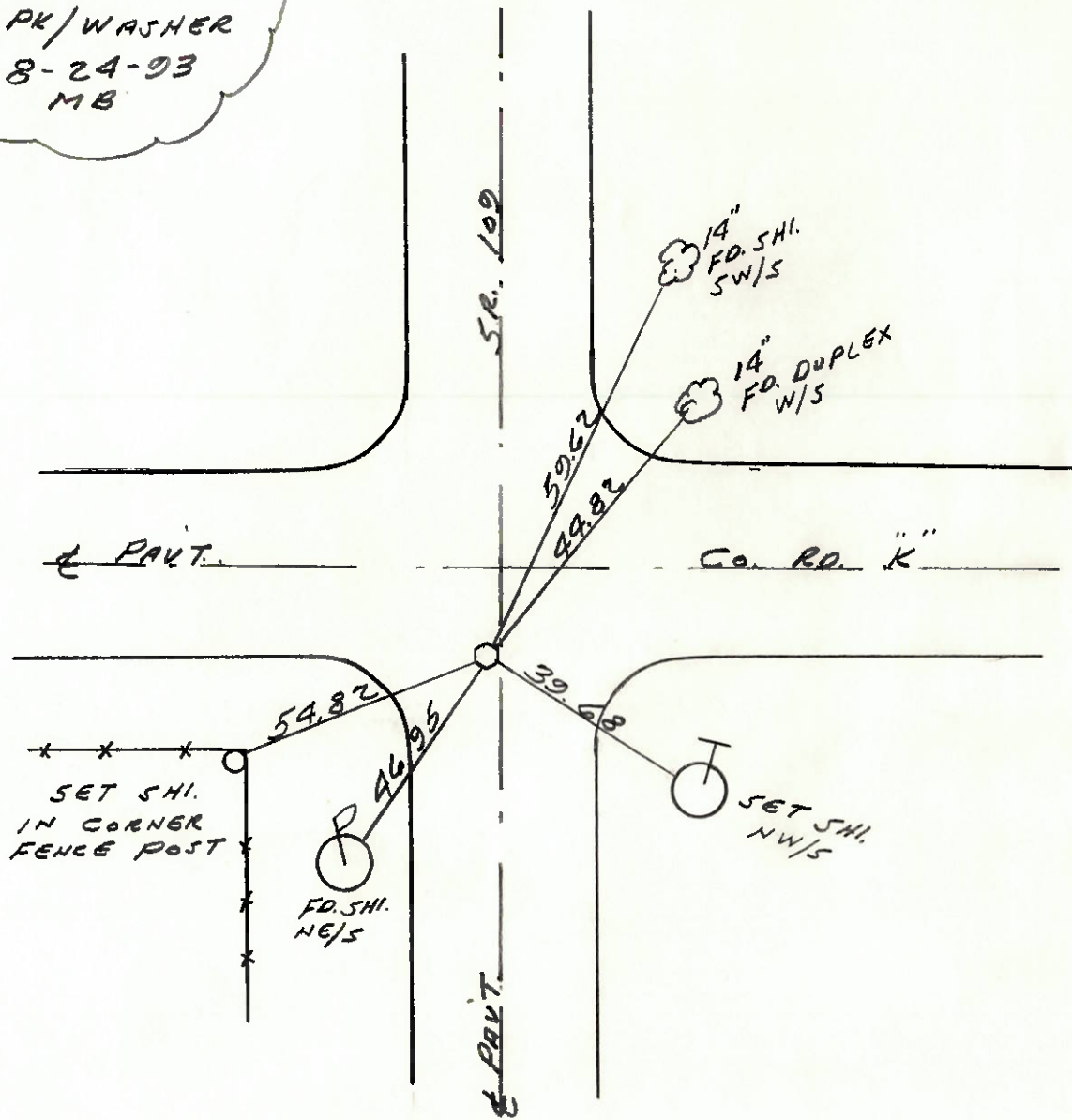
LEFT-   PART. - RIGHT 1.4

8.8 TO LT EDGE PAVEMENT ON S. EDGE PART. OF ROAD TO EAST

S.L.M. 530+56



SET PK/WASHER  
8-24-93  
MB



# O.D.O.T. DISTRICT 2 SURVEY OFFICE

PERSONNEL

REFERENCE NO. 22

SHEET      OF     

NOTES Barnhiser

H.C. Hoffman

DATE 4-8-85

ROUTE 109

R.C. Loehrke

WEATHER clear

COUNTY Henry

TEMP. +35°

TOWNSHIP Monroe

SECTION 14

T 4 N R 7 E

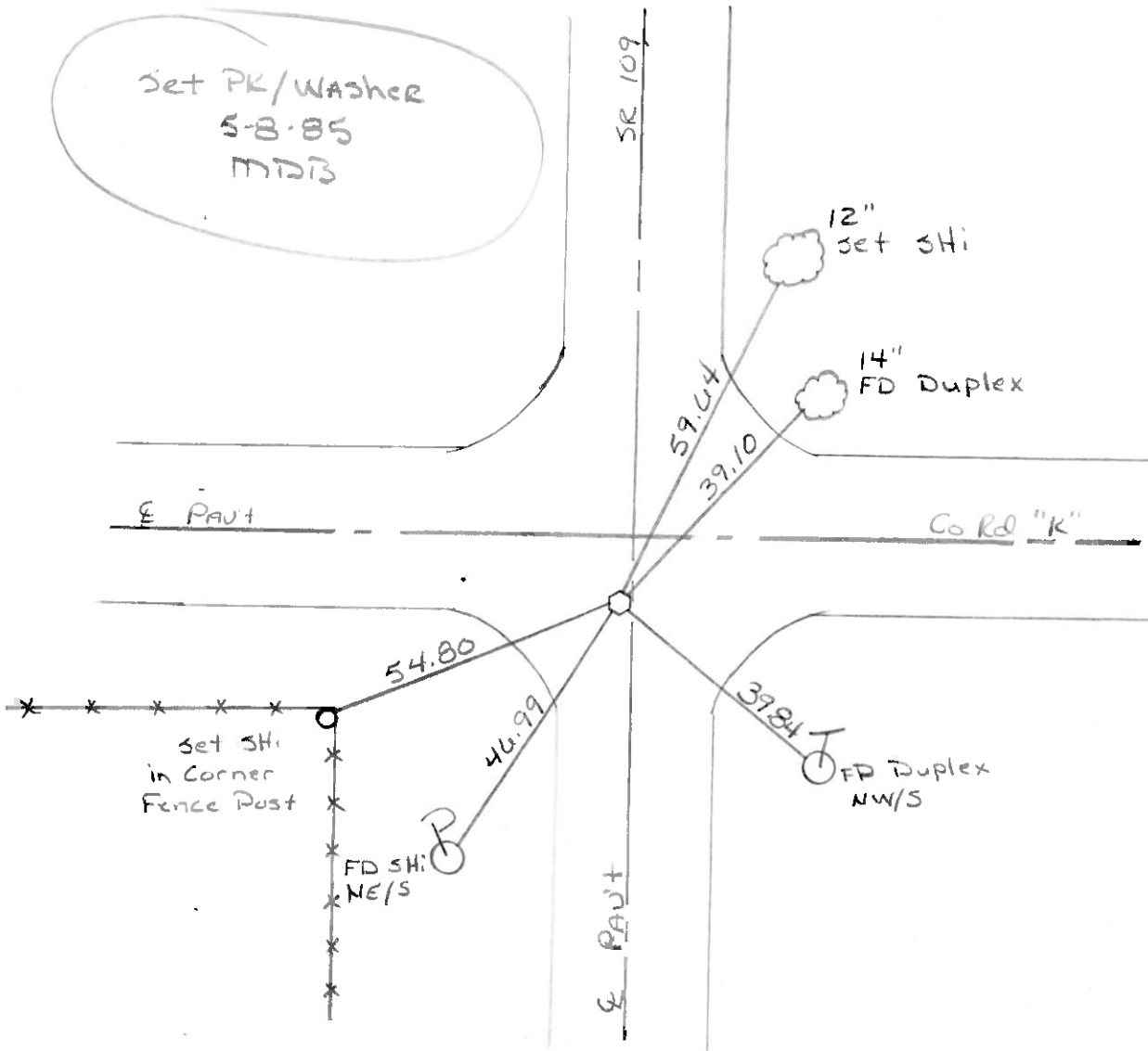
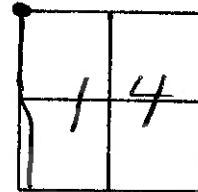
TYPE MONUMENT Lg RR/spk Punch hole

ON SURFACE - ~~BELOW~~ ✓

LEFT-0 PAV'T. - ~~RIGHT~~ 0.8

— TO — EDGE PAVEMENT 6' 30" E 20" K"

S.L.M. 529+99

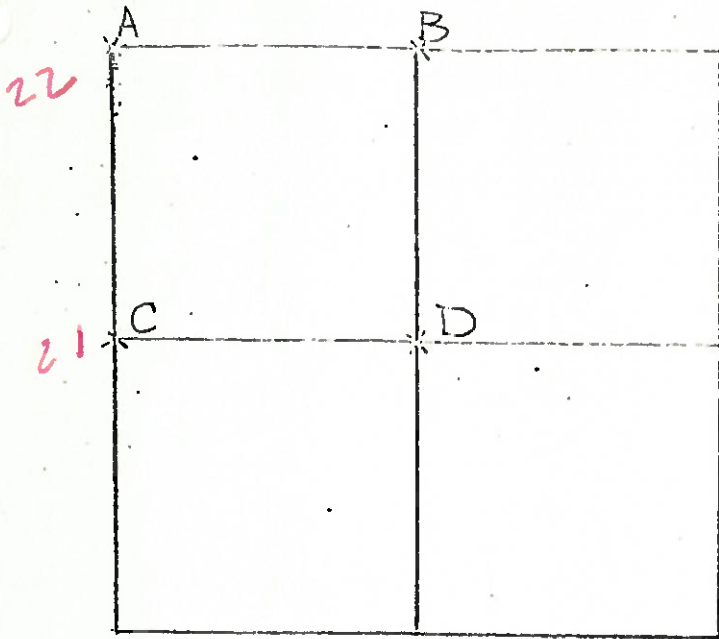


COUNTY HENRY

T 4 N , R 7 E

TOWNSHIP MONROE S.R. 109

SECTION 14



7-13-79 P.M. J.J. G.M.  
 C - FOUND STONE (6" x 7" x 8")  
 20" BELOW ROAD SURFACE  
 PLACED CENTER PUNCHED  
 R.R. SPIKE ON SURFACE  
 OVER HIGH POINT OF STONE  
 P.K.'S SET 6' N. & E  
 98.53' N.N.E. TO DUPLEX <sup>W/S</sup> <sub>6</sub>  
 47.76' S.E. TO DUPLEX <sup>W/S</sup> <sub>6</sub>  
 30.44' S.W. TO DUPLEX <sup>SE/S</sup> <sub>6</sub>

5-1-79 R.W, J.J.

D - FOUND IRON PIPE AND STONE LEANING TO THE SOUTH. PLACED STONE  
 IN VERTICAL POSITION FROM RECORDED WITNESS TIES. PLACED IRON  
 PIPE ON <sup>W/S</sup> OF STONE ANGLED OVER HIGH POINT OF STONE. TOP OF  
 PIPE OVER HIGH POINT. STONE IS 12" BELOW GROUND LEVEL.  
 21.65' E.S.E. TO "+" IN NORTH END OF EAST HEADWALL (PLUMBED)  
 9.73' S.E. TO "+" IN NORTH END OF WEST HEADWALL (PLUMBED)  
 14.82' S.S.E. TO "+" IN SOUTH END OF WEST HEADWALL (PLUMBED)

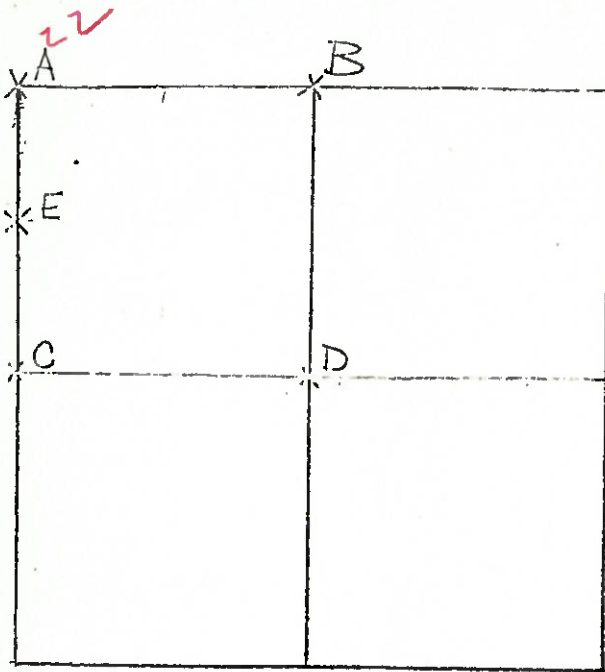
COUNTY HENRY SR109

T 4 N , R 7 E

TOWNSHIP MONROE

SECTION 14

7-9-79  
R.W., J.J., G.M.



A - FOUND RR SPIKE OVER IRON ROD SET IN CONCRETE PAVEMENT. COULD NOT LOCATE SPIKE. RECOVERED IRON ROD AND SET 1" DIA. x 30" RE-BAR 7" BELOW ROAD SURFACE. PLACED CENTER PUNCHER RR SPIKE ON SURFACE. P.K.'S SOUTH & WEST SPIKE IS 9.4' EAST OF WEST EDGE OF

20' PAVEMENT.

39.06' N.E. TO DUPLEX <sup>W/S</sup> 12"

39.74' S.E. TO DUPLEX <sup>W/S</sup> TELEPHONE

46.98' S.W. TO NAIL & SHINER <sup>NE/S</sup> POWER POLE

4-12-79 R.W., J.J.

B - FOUND RECORDED IRON PIN ALONG SIDE OF STONE (4" x 8" x 12")

13" BELOW EDGE OF PAVEMENT. PLACED NEW IRON PIN (12" LONG)

OVER CENTER OF STONE. P.K.'S 6' N.W. & N.E.

STONE IS 6" SOUTH OF SOUTH EDGE OF PAVEMENT.

NO TIES AVAILABLE

7-13-79 R.W., J.J., G.M.

E - FOUND HINGE NAIL 2.1' WEST AND 1.5' NORTH OF HIGH POINT OF STONE

(10" x 12" x 18") 14" BELOW ROAD SURFACE. REMOVED HINGE NAIL AND PLACED

CENTER PUNCHER RR SPIKE ON SURFACE OF HIGH POINT OF STONE. STONE

LOCATED 10' EAST OF WEST EDGE OF 10' PAVEMENT. P.K.'S SET 6' S & W

SPIKE 31.02' W. TO IRON PIN

HINGE NAIL 29.98'

24.93' - W. TO "+" EAST END CONC. HDNAIL - 22.99' (REMOVED)

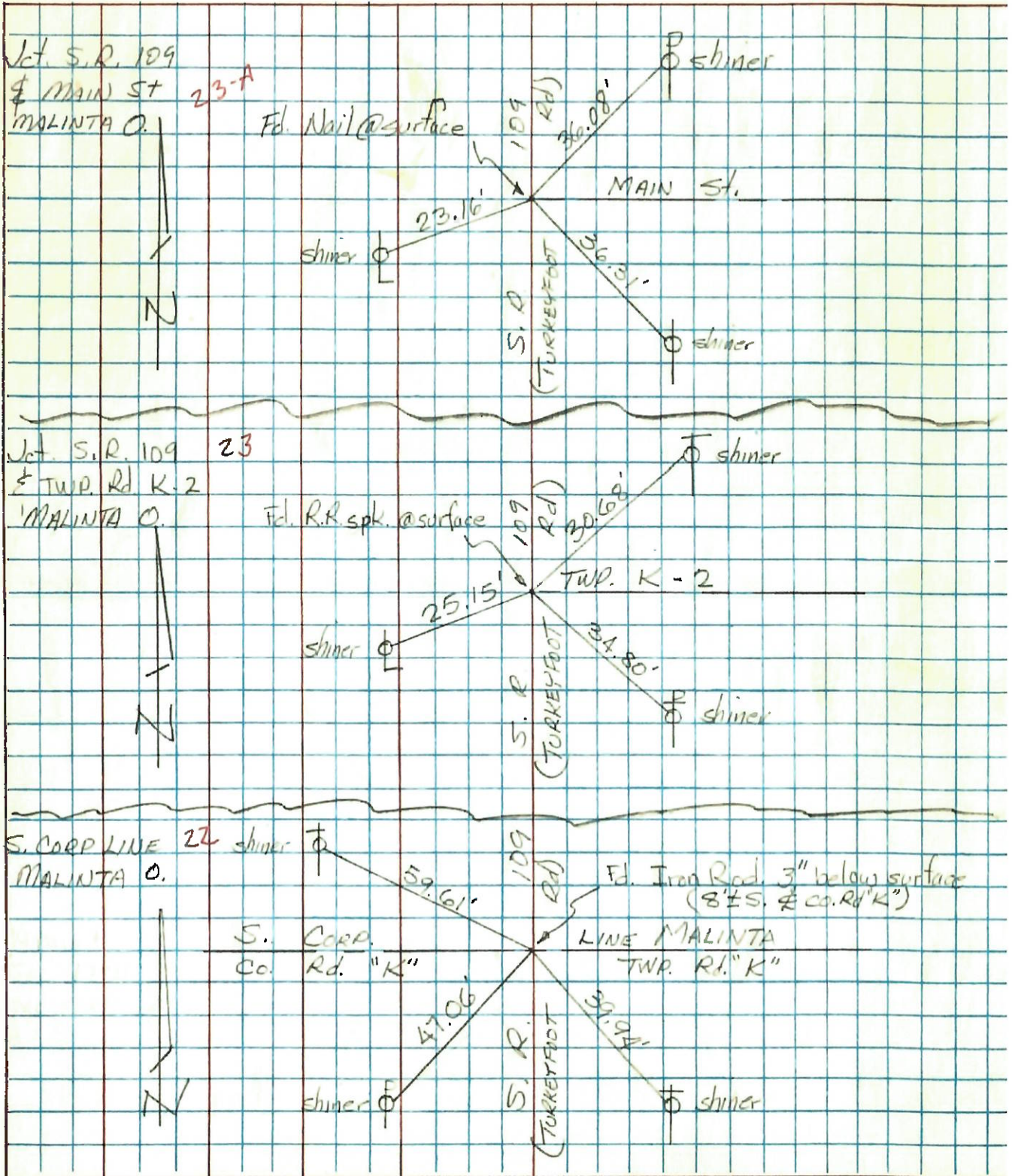
33.80' - E.N.E. TO DUPLEX <sup>N.W/S</sup> TOP - 34.12'

59.96' - S.S.W. TO DUPLEX <sup>S.W/S</sup> TOP - 60.34'

PERSONNEL	TITLE	PERSONNEL	TITLE
Tomsic			
Nolzer			
Granata			
Vanyo			

COUNTY HENRY DATE Nov. 1, 1973  
 S. R. 109 WEATHER \_\_\_\_\_  
 SEC. MONROE TWP. TEMP. \_\_\_\_\_

DESCRIPTION \_\_\_\_\_ LEFT \_\_\_\_\_ CENTER LINE \_\_\_\_\_ RIGHT \_\_\_\_\_ JOB NO. \_\_\_\_\_



PERSONNEL	TITLE	PERSONNEL	TITLE	COUNTY	DATE
				Henry	2-6-58
				S. R. #109	WEATHER
				SEC.	TEMP.
DESCRIPTION	Malinta				JOB NO.
	LEFT	CENTER LINE	RIGHT		

Control Points checked by Jameson 3-6-58

22	#72 Iron Pin	60.80	#1.07' N.W. To Shi. P. Pole
✓	South Corp Line Sta 530+16.2	OK 2/6/58	39.20 ✓ 21.65' S.W. To SHINER <del>to</del> W. P Pole
			41.35 ✓ <del>21.55'</del> S.E. To SHINER T Pole
			27
			51.60 ✓ NW TO CONC FOUNDATION 1' FROM GRND
			43.0 ✓ NE TO SHINER IN MAPLE TREES
23	#73 IRON PIN. OK 2/6/58		<del>16.83'</del> N.E. To NEAR side pipe in
✓	Sta 556+44.15 Twp. Rd. K. 2		SHINER N.W. CONC.
	Angle 00°-17' H. Curd.		<del>33.28'</del> S.E. To SHINER S.W. Side,
			38.30 ✓ T Pole
			60.39" S.W. To N.E. Cor. Tile Block Garage.
24	#74 Iron Pipe OK 2/6/58		.26
✓	North Corp Line Co. Rd. 1		80.41 N.W. To S.E. Cor. Walk To
	Sta 583+22.38		Porch
			.29 35
			40.45 N.E. To X on Hdw.
			41.30 E.N.E. " " " "