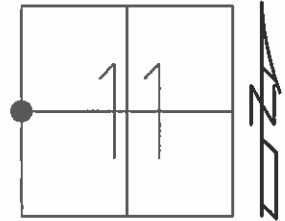


O.D.O.T. DISTRICT 2 SURVEY OFFICE (USE ONLY)

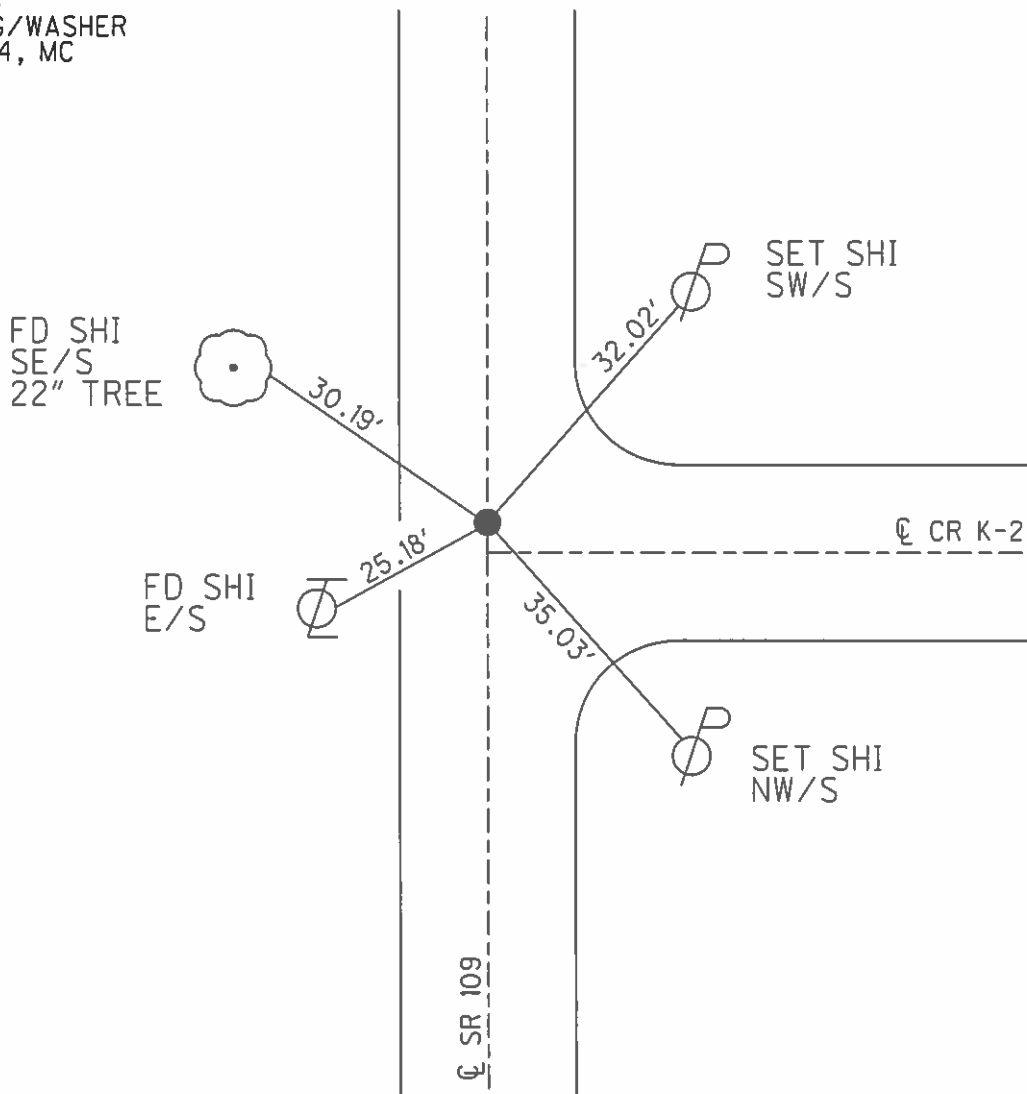
PERSONNEL _____ REFERENCE NO. 23 SHEET 8 OF 38
 NOTES CANTERBURY DATE 8-31-04 ROUTE SR 109
 H.C. BARNHISEL WEATHER SUNNY COUNTY HENRY
 R.C. HOOVER TEMP. 70°F TOWNSHIP MONROE
 _____ SECTION 11
 _____ T 4 N R 7 E

TYPE MONUMENT PK/WASHER
 ON SURFACE - ~~BELOW~~ ON
 LEFT - ☉ PAV'T - RIGHT ON
10.1' TO LT EDGE PAVEMENT
 S.L.M. 556+89



Grid: Northing: 640314.4041 Easting: 157193.2239

RECORD:
 SET MAG/WASHER
 10-28-04, MC



O.D.O.T. DISTRICT 2 SURVEY OFFICE

PERSONNEL _____

REFERENCE NO. 23

SHEET 7 OF 23

NOTES CANTERBURY

H.C. BARNHISEL

R.C. HOOVER

DATE 8-31-04

WEATHER SUN

TEMP. +70°

ROUTE 109

COUNTY HENRY

TOWNSHIP MONROE

SECTION 11

T4 N R 7 E

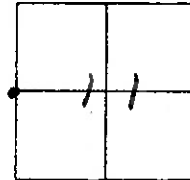
TYPE MONUMENT P.K. / WASHER

ON SURFACE - ~~BELOW~~ SURFACE

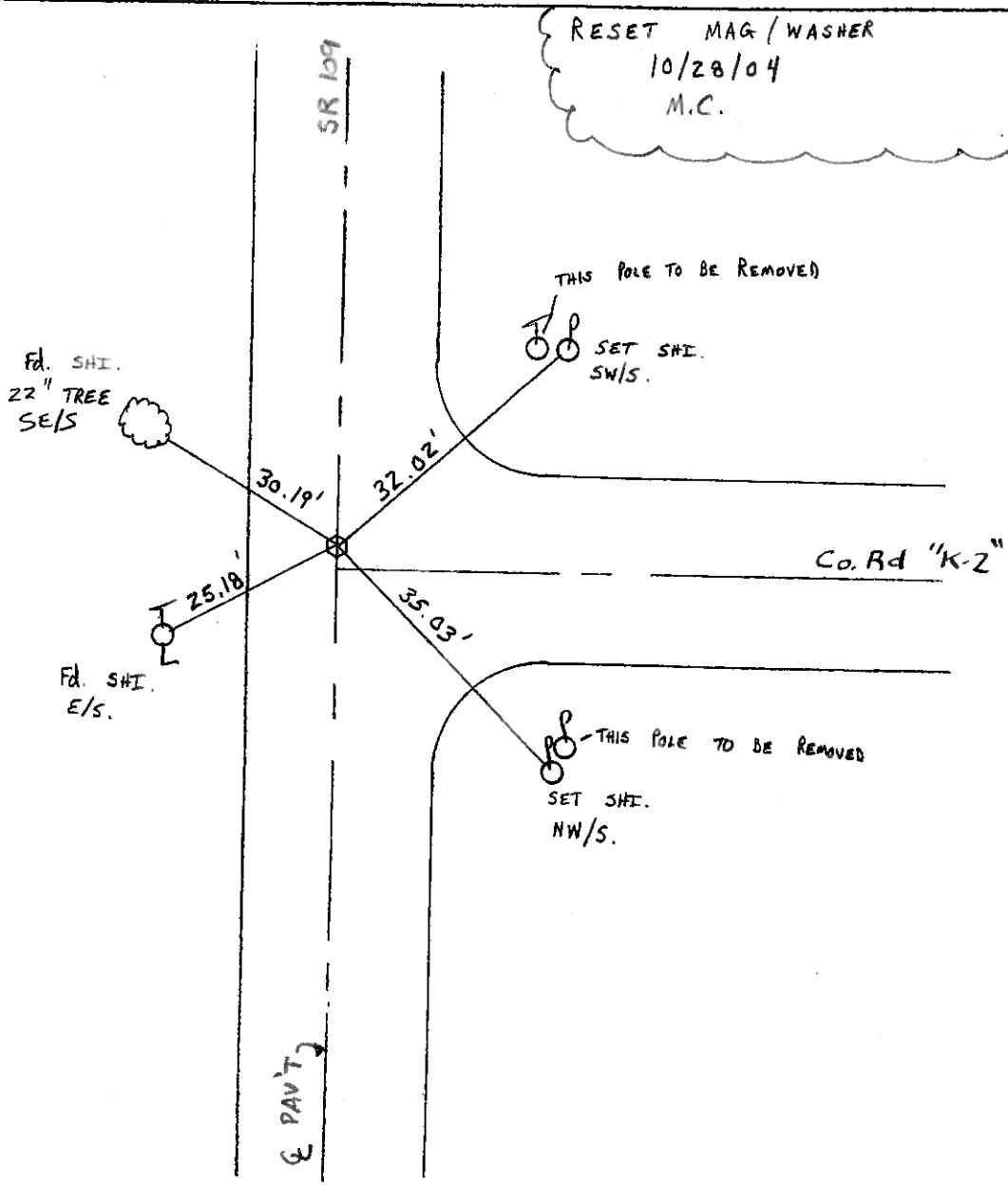
~~LEFT - & PAV'T. - RIGHT~~ ON E

10.1' TO LT EDGE PAVEMENT 2' N. OF E "K-2"

S.L.M. 556 + 89



RESET MAG/WASHER
10/28/04
M.C.



O.D.O.T. DISTRICT 2 SURVEY OFFICE

PERSONNEL _____

REFERENCE NO. 23

SHEET _____ OF _____

NOTES BARNHISEL

H.C. VAN DUSEN

R.C. KUSZ

DATE 8-17-93

WEATHER Fog

TEMP. +81° F.

ROUTE 109

COUNTY HENRY

TOWNSHIP MONROE

SECTION 11

T 4 N R 7 E

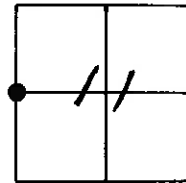
TYPE MONUMENT Lg. RR/SPK. PUNCH

ON SURFACE - BELOW YES

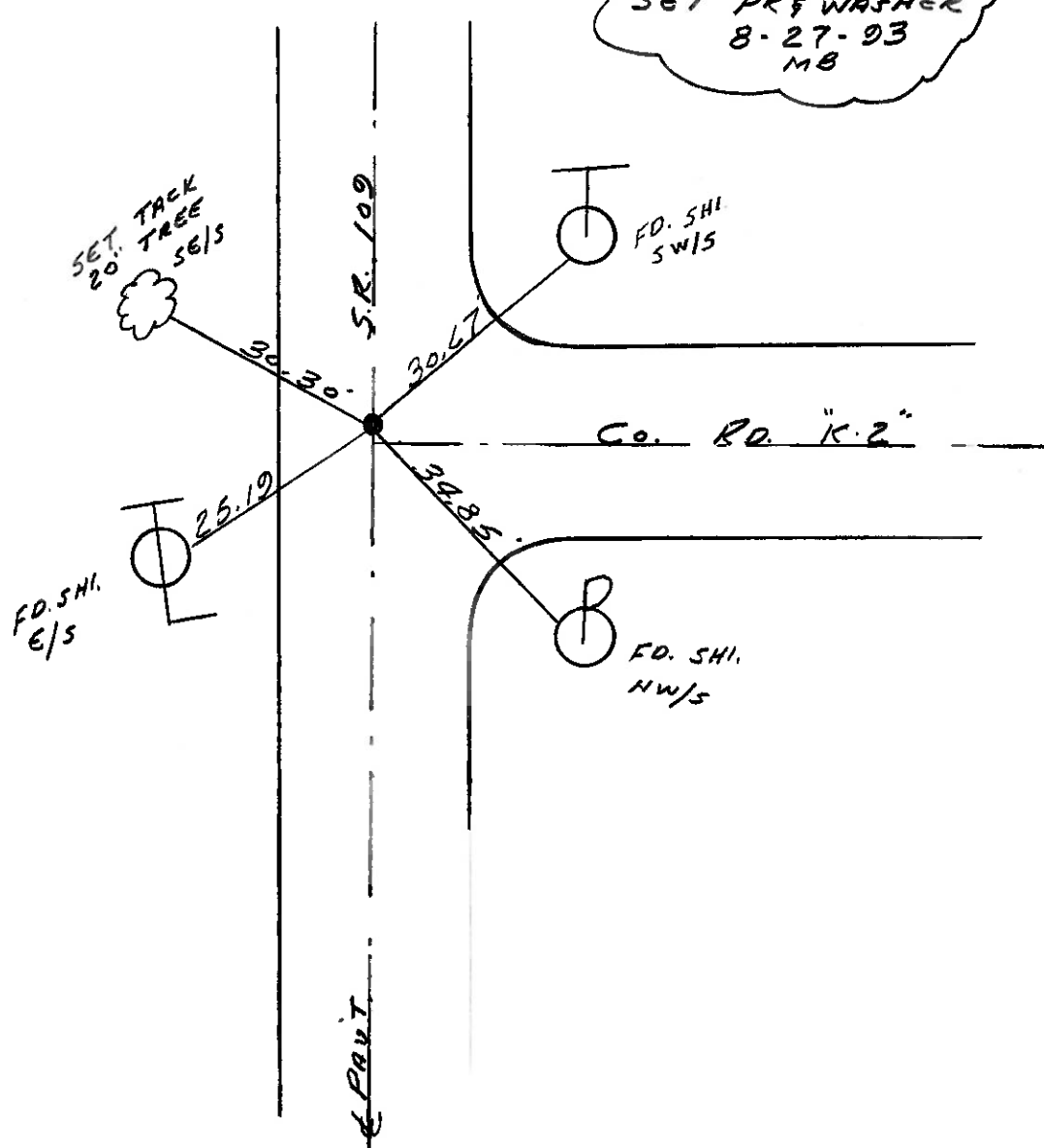
LEFT - C PAV'T. - RIGHT YES

10.5 TO LT. EDGE PAVEMENT 2' N. OF E "K2"

S.L.M. 556+89



SET PK& WASHER
8-27-93
MB



O.D.O.T. DISTRICT 2 SURVEY OFFICE

PERSONNEL

REFERENCE NO. 23

SHEET _____ OF _____

NOTES BARNHISEL

H.C. Hoffman

DATE 4-8-85

ROUTE 109

R.C. Loehrke

WEATHER cloudy

COUNTY Henry

TEMP. +35°

TOWNSHIP Monroe

SECTION 11

T 4 N R 7 E

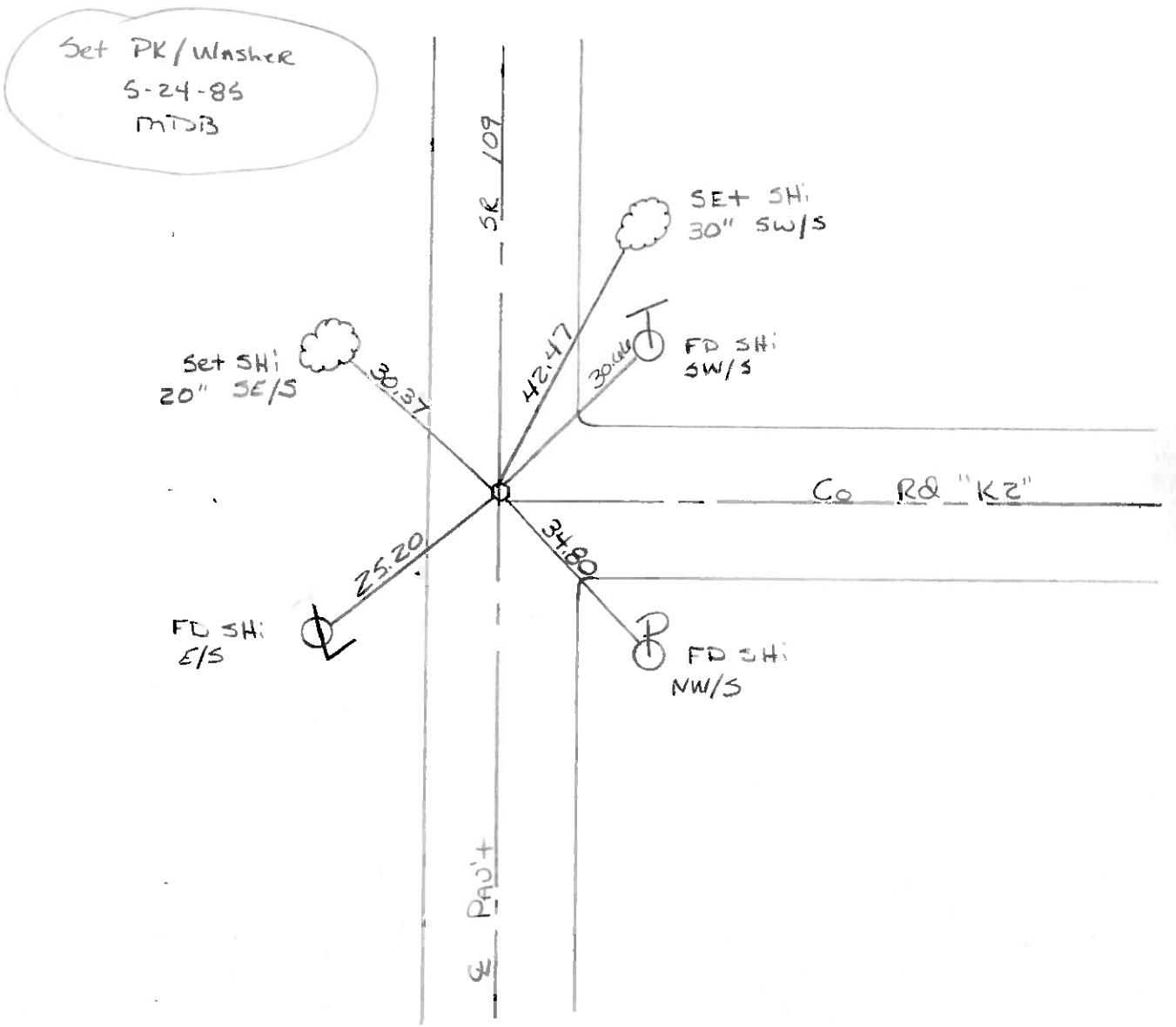
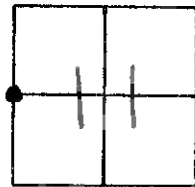
TYPE MONUMENT Lg RR/SPK Punch Hole

ON SURFACE - ~~BELOW~~

~~LEFT - & PAV'T. - RIGHT~~

9.8 TO Lt EDGE PAVEMENT 2' N of E "K2"

S.L.M. 55(6+3)

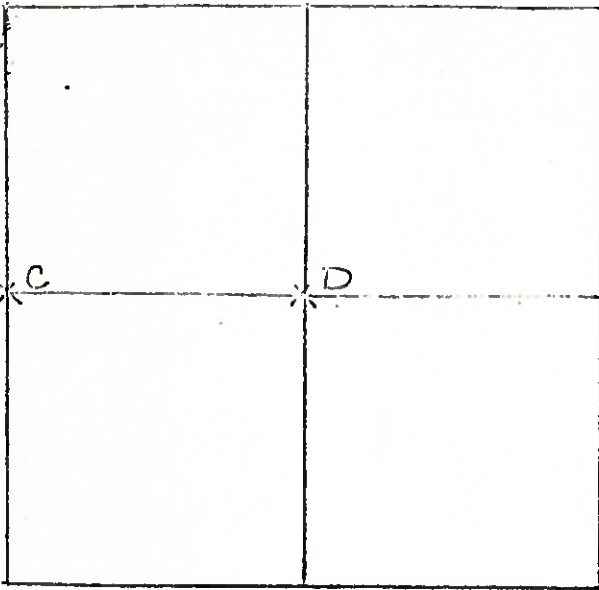


COUNTY HENRY S.R. 109

T 4 N , R 17 E

TOWNSHIP MONROE

SECTION 11



7-5-79 R.W. J.J. G.M.

C - FOUND R.R. SPIKE ON SURFACE. [unclear] FOR [unclear] BUT COULD NOT LOCATE PAVED CENTER PAVED R.R. SPIKE ON SURFACE IN AREA OF [unclear] P.P. ST. IS LOCATED 10.8' FROM WEST END OF 18' PAVEMENT

- P.K.'S SET 6' N & W
- 25.20' W.S.W. TO SHOWER E/S. T
- 30.62 N.E. TO SHOWER S.W/S T
- 34.76 S.E. TO SHOWER N.W/S T

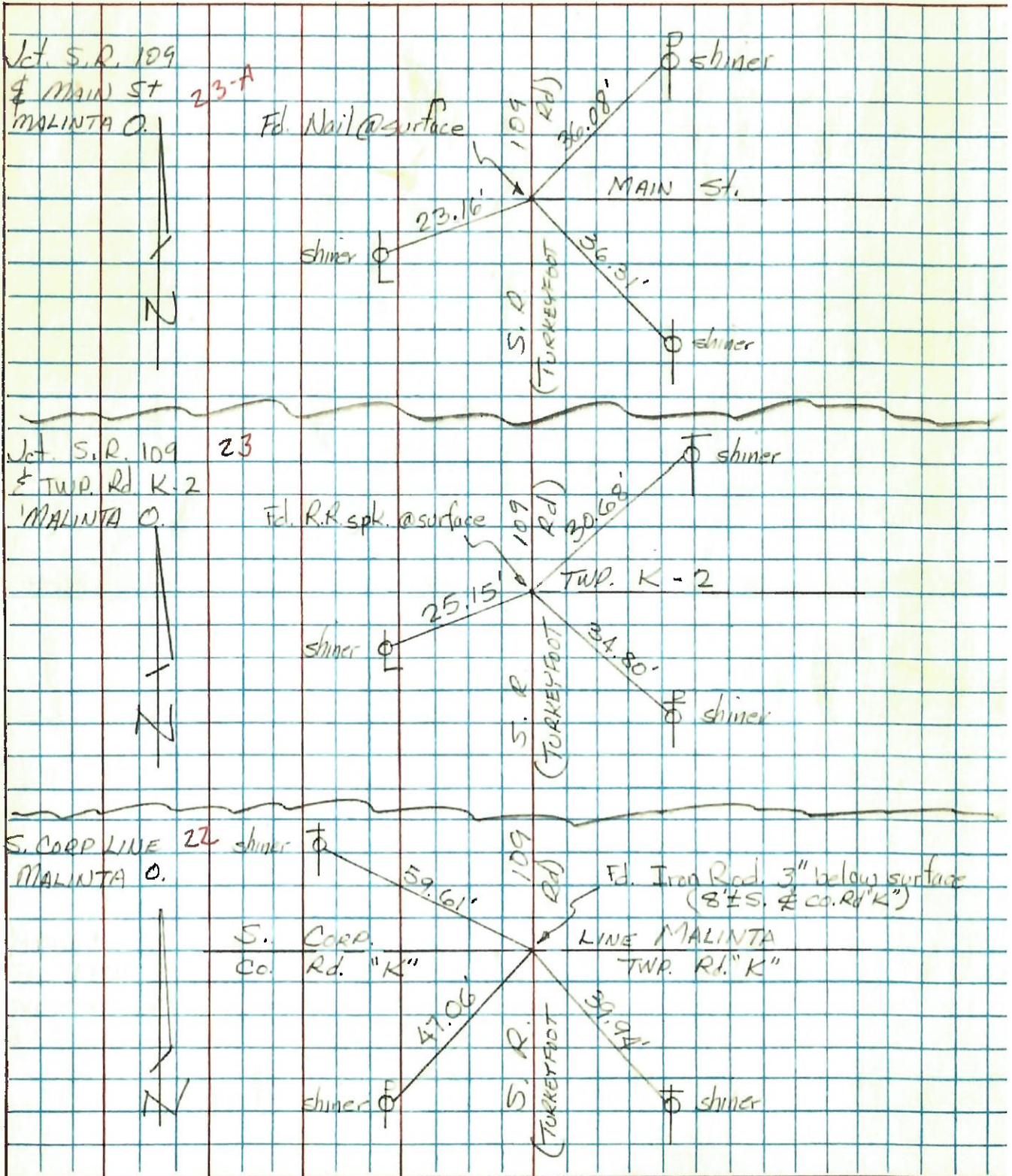
D - FOUND RECORDED IRON PIN (3/4" DIA.) AND BRICK BATS. STONE HAD BEEN REMOVED IN 1961. PLACED P.K.'S 6' NW & N.E.

- 70.25' N.W. TO FACE OF 8" PINE (CHAIN LEVEL)
- 46.29' E.S.E. TO BARGE SPIKE IN CONC. BRIDGE (PLUMBED)

PERSONNEL	TITLE	PERSONNEL	TITLE
Tomsic			
Nolzer			
Granata			
Vanyo			

COUNTY: HENRY DATE: Nov. 1, 1973
 S. R. 109 WEATHER _____
 SEC. MONROE TWP. TEMP. _____

DESCRIPTION _____ LEFT _____ CENTER LINE _____ RIGHT _____ JOB NO. _____



PERSONNEL TITLE PERSONNEL TITLE

COUNTY Henry

DATE 2-6-58

S. R. #109

WEATHER

SEC.

TEMP.

DESCRIPTION

Malinta

JOB NO.

LEFT

CENTER LINE

RIGHT

Control Points checked by Jameson 3-6-58

22 #72 Iron Pin 60.80 ✓ #1.07' N.W. To Shi. ^{T POLE} P. Pole
 ✓ South Corp Line OK 2/6/58 39.20 ✓ ~~21.65~~' S.W. To ^{SHINER} ~~X on~~ ~~101~~ W. P Pole
 Sta 530+16.2 41.35 ✓ ~~21.55~~' S.E. To ^{SHINER} T POLE
 2?

23 #73 IRON PIN. OK 2/6/58
 ✓ Sta 556+44.15 Twp. Rd. K. 2
 Angle 00°-17' H. Ford.
 51.60 ✓ NW TO CONC FOUNDATION 1' FROM GRND
 43.0 ✓ NE TO SHINER IN MAPLE TREES
~~16.83~~' N.E. To NEAR side pipe in
 33.28' S.E. ^{SHINER N.W. CONC.} to ~~S.P.~~ S.W. Side,
 38.30 ✓ T POLE ~~P.P.~~
 60.39" S.W. To N.E. Cor. Tile Block Garage.

24 #74 Iron Pipe OK 2/6/58
 ✓ North Corp Line Co. Rd. L
 Sta 583+22.38
 .26
 80.41 N.W. To S.E. Cor. Walk To
 .29 35
 40.45 N.E. To X on Hdw. Porch
 41.30 E.N.E. " " " "