

O.D.O.T. DISTRICT 2 SURVEY OFFICE (USE ONLY)

PERSONNEL

REFERENCE NO. 23 B

SHEET 10 OF 39

NOTES BALBAUGH

DATE 4/6/20

ROUTE SR 109

H.C. O'DONNELL

WEATHER SUNNY

COUNTY HENRY

R.C. LEU

TEMP. 43°

TOWNSHIP MONROE

SECTION 11

DWG BY GARRETT PID PAVETRAIN

T 4 N R 7 E

TYPE MONUMENT SM.R.R.SPIKE

~~ON SURFACE~~ - BELOW 4"

OFFSET  $\odot$  PAVEMENT ON LT : RT

9.4' TO LT EDGE PAVEMENT

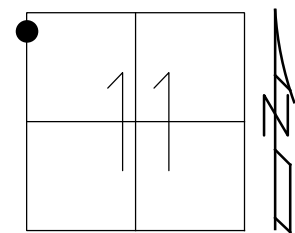
STATION: 578+49

HORZ.DATUM: NAD83 (2011)

GEOID: 2012A

GRID: NORTHING: 640257.309

EASTING: 1572666.359



RECORD:  
 FD P.K.NAIL  
 8/31/04, MB  
 SET MAG/WASHER  
 10-28-04, MC  
 FD SM RR SPIKE  
 4" DOWN  
 REFB23  
 4/6/20, JFO

SET "+" RIM  $\odot$  29.58' P  
 SAN MH

FD SHI  $\odot$  31.08'

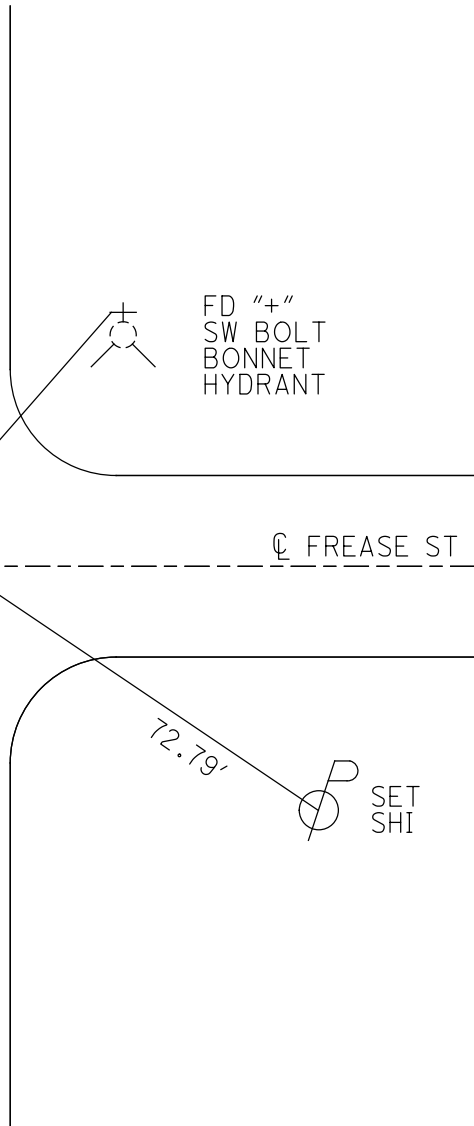
$\odot$  SR 109

FD "+"  
 SW BOLT  
 BONNET  
 HYDRANT

$\odot$  FREASE ST

72.79'  $\odot$  SET SHI

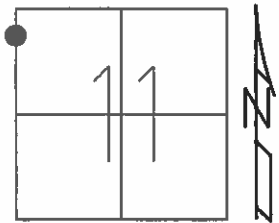
34.12'



O.D.O.T. DISTRICT 2 SURVEY OFFICE (USE ONLY)

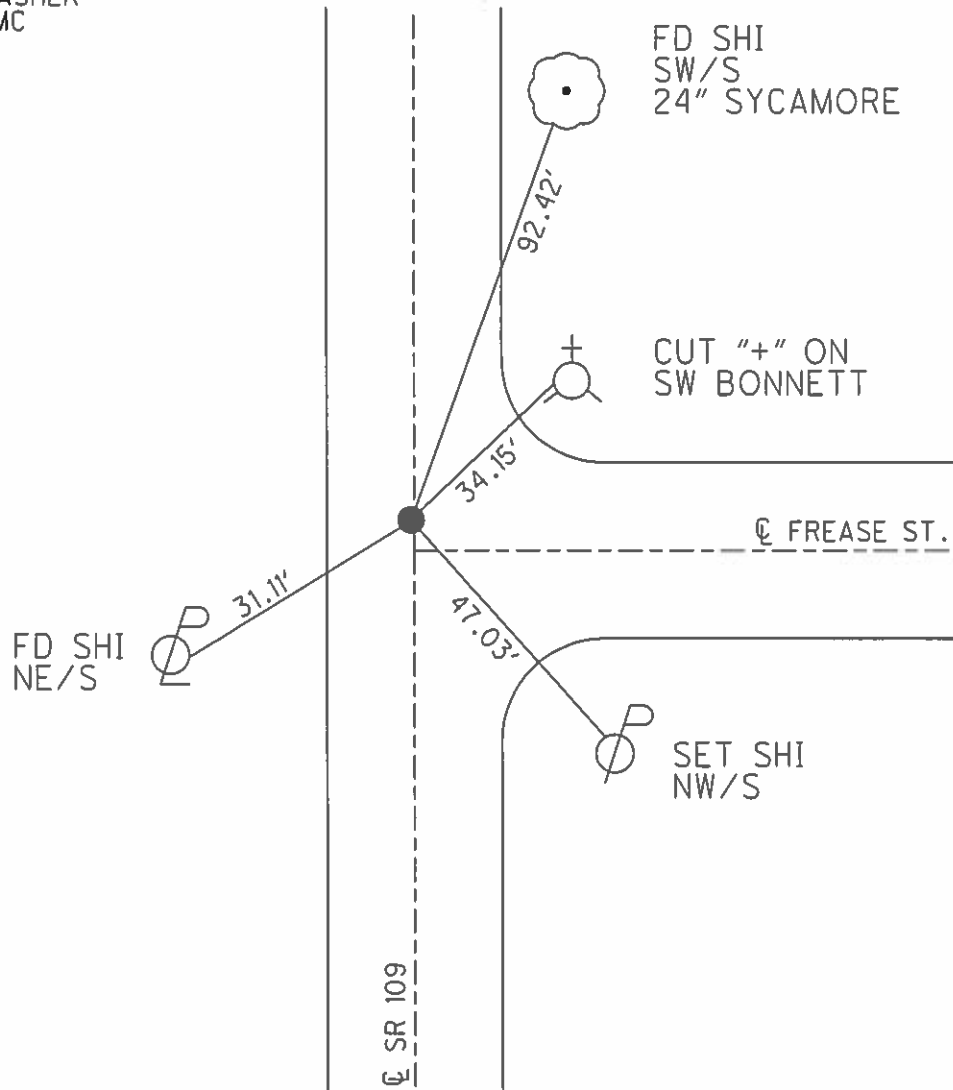
PERSONNEL \_\_\_\_\_ REFERENCE NO. 23 B SHEET 10 OF 38  
 NOTES CANTERBURY DATE 8-31-04 ROUTE SR 109  
 H.C. BARNHISEL WEATHER SUNNY COUNTY HENRY  
 R.C. HOOKER TEMP. 70°F TOWNSHIP MONROE  
 \_\_\_\_\_ SECTION 11  
 \_\_\_\_\_ T 4 N R 7 E

TYPE MONUMENT PK NAIL  
 ON SURFACE - ~~BELOW~~ ON  
 LEFT - ☉ PAV'T - RIGHT ON  
9.4' TO LT EDGE PAVEMENT  
 S.L.M. 578+49



Grid: Northing: 640257.3093 Easting: 1572666.3589

RECORD:  
 SET MAG/WASHER  
 10-28-04, MC



# O.D.O.T. DISTRICT 2 SURVEY OFFICE

PERSONNEL \_\_\_\_\_

REFERENCE NO. 23-B

SHEET 9 OF 23

NOTES CANTERBURY

H.C. BARNHISEL

R.C. HOOGER

DATE 8-31-04

WEATHER SUN

TEMP. +70°

ROUTE 109

COUNTY HENRY

TOWNSHIP MONROE

SECTION 11

T 4 N R 7 E

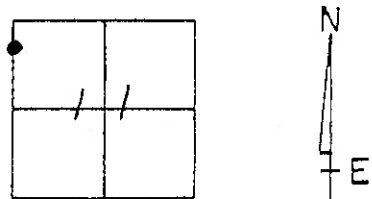
TYPE MONUMENT P.K. NAIL

ON SURFACE - ~~BELOW~~ SURFACE

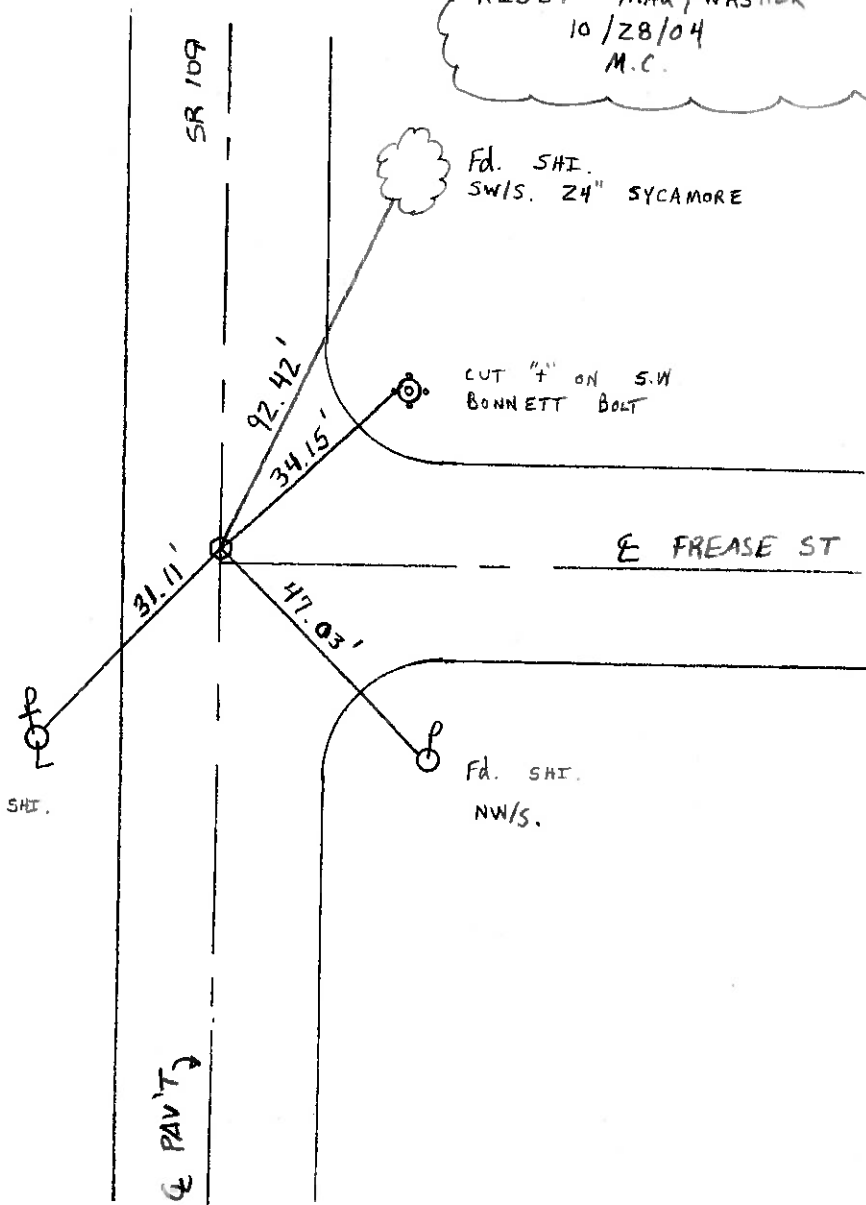
~~LEFT - & PAV'T. - RIGHT~~ ON & PAV'T.

9.4' TO LT. EDGE PAVEMENT 1.0' N. OF & FRESSE ST.

S.L.M. 578 + 49



RESET MAG/WASHER  
10/28/04  
M.C.



Fd. SHI.  
SW/S. 24" SYCAMORE

CUT 4" ON S.W  
BONNETT BOLT

E FRESSE ST

SET SHI.  
NE/S.

Fd. SHI.  
NW/S.

C PAV'T.

O.D.O.T. DISTRICT 2 SURVEY OFFICE

PERSONNEL

REFERENCE NO. 23-B

SHEET \_\_\_\_\_ OF \_\_\_\_\_

NOTES BARNHISEL

H.C. VAN DUJEN

DATE 8-17-93

ROUTE 109

R.C. KUZZ

WEATHER FOG

COUNTY HENRY

TEMP. +81° F

TOWNSHIP MONROE

SECTION 11

T4 NR 7 E

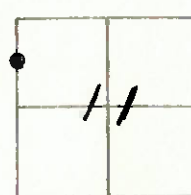
TYPE MONUMENT SM RR/SPK.

ON SURFACE - BELOW YES

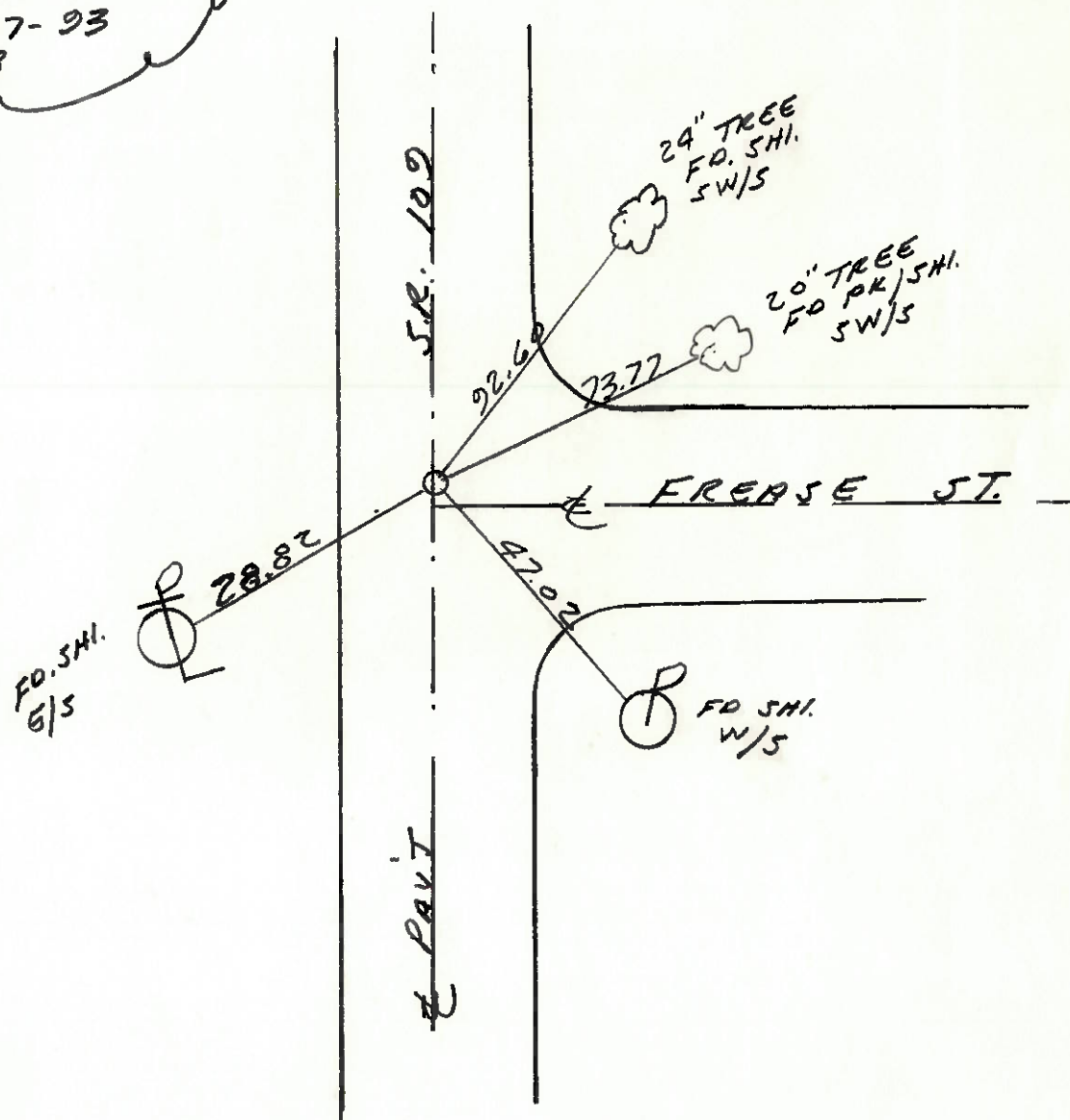
LEFT- & PAV'T. - RIGHT YES

10.0 TO LT. EDGE PAVEMENT

S.L.M. 578+49 1.0 N. OF E FREASE ST.



SET PK & WASHER  
8-27-93  
MB



# O.D.O.T. DISTRICT 2 SURVEY OFFICE

PERSONNEL

REFERENCE NO. 23-B

SHEET      OF     

NOTES BARNHISEL

H.C. Hoffman

DATE 4-8-85

ROUTE 109

R.C. Loehrke

WEATHER cloudy

COUNTY Henry

TEMP. +35°

TOWNSHIP Monroe

SECTION 11

T. 4 N. R. 7 E.

TYPE MONUMENT 5m RR / spk

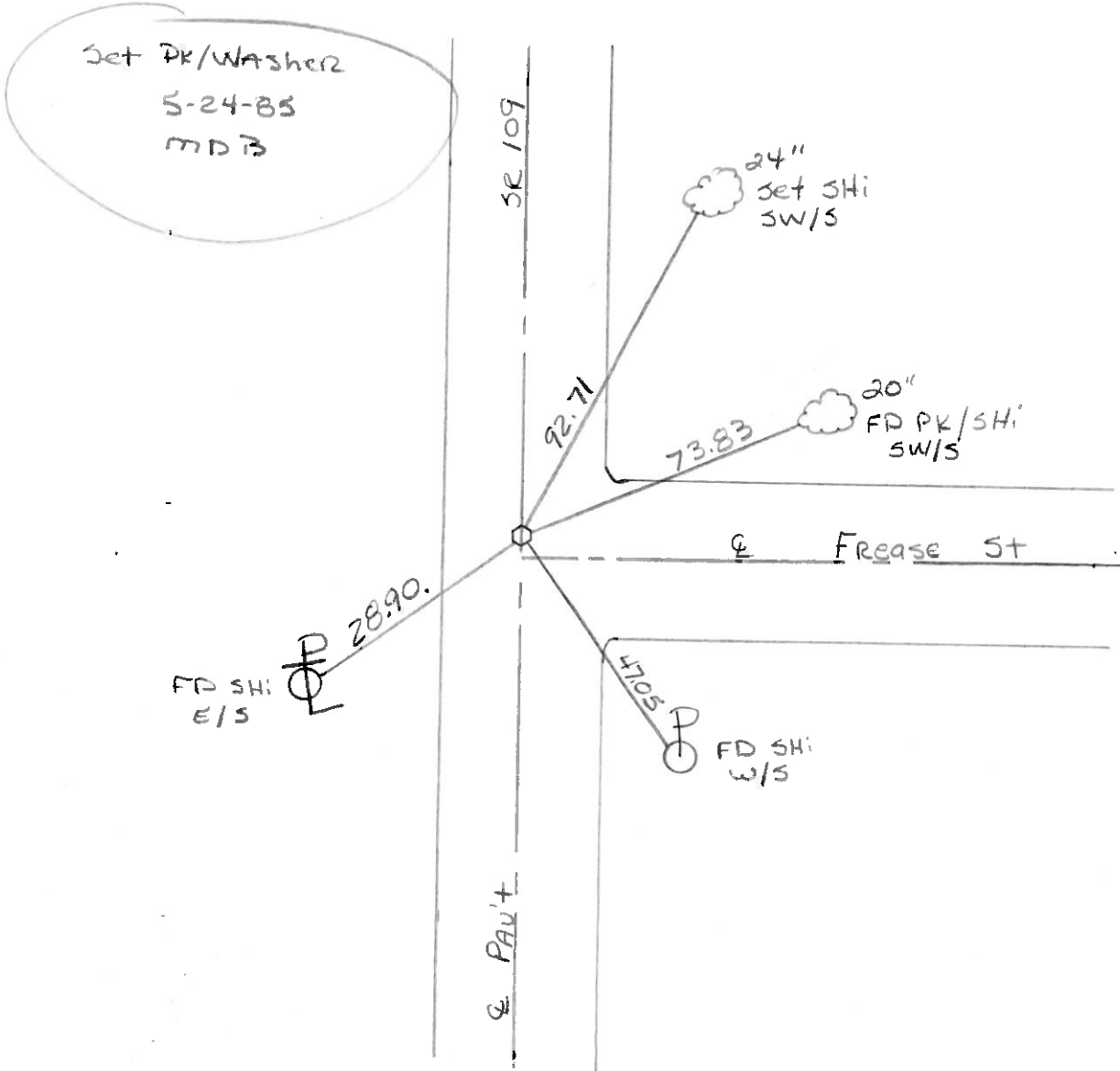
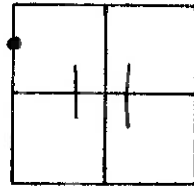
ON SURFACE - BELOW ✓

LEFT - & PAV'T. - RIGHT ✓

9.0 TO LT EDGE PAVEMENT

S.L.M. 577+89

1' N of E Frease St



PERSONNEL	TITLE	PERSONNEL	TITLE
TOMASIK			
Neuser			
inipata			
Vays			

COUNTY HENRY DATE Nov 2, 1973

S. R. 109 WEATHER

SEC. MONROE TWP. TEMP.

DESCRIPTION LEFT CENTER LINE RIGHT JOB NO.

