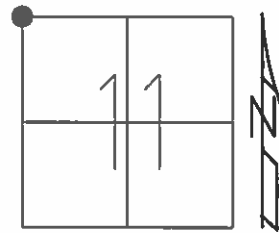


O.D.O.T. DISTRICT 2 SURVEY OFFICE (USE ONLY)

PERSONNEL \_\_\_\_\_ REFERENCE NO. 24 SHEET 11 OF 38  
 NOTES RHOADES DATE 9-3-15 ROUTE SR 109  
 H.C. O'DONNELL WEATHER CLEAR COUNTY HENRY  
 R.C. RHOADES TEMP. 88°F TOWNSHIP MONROE  
 \_\_\_\_\_ SECTION 11  
 \_\_\_\_\_ T 4 N R 7 E

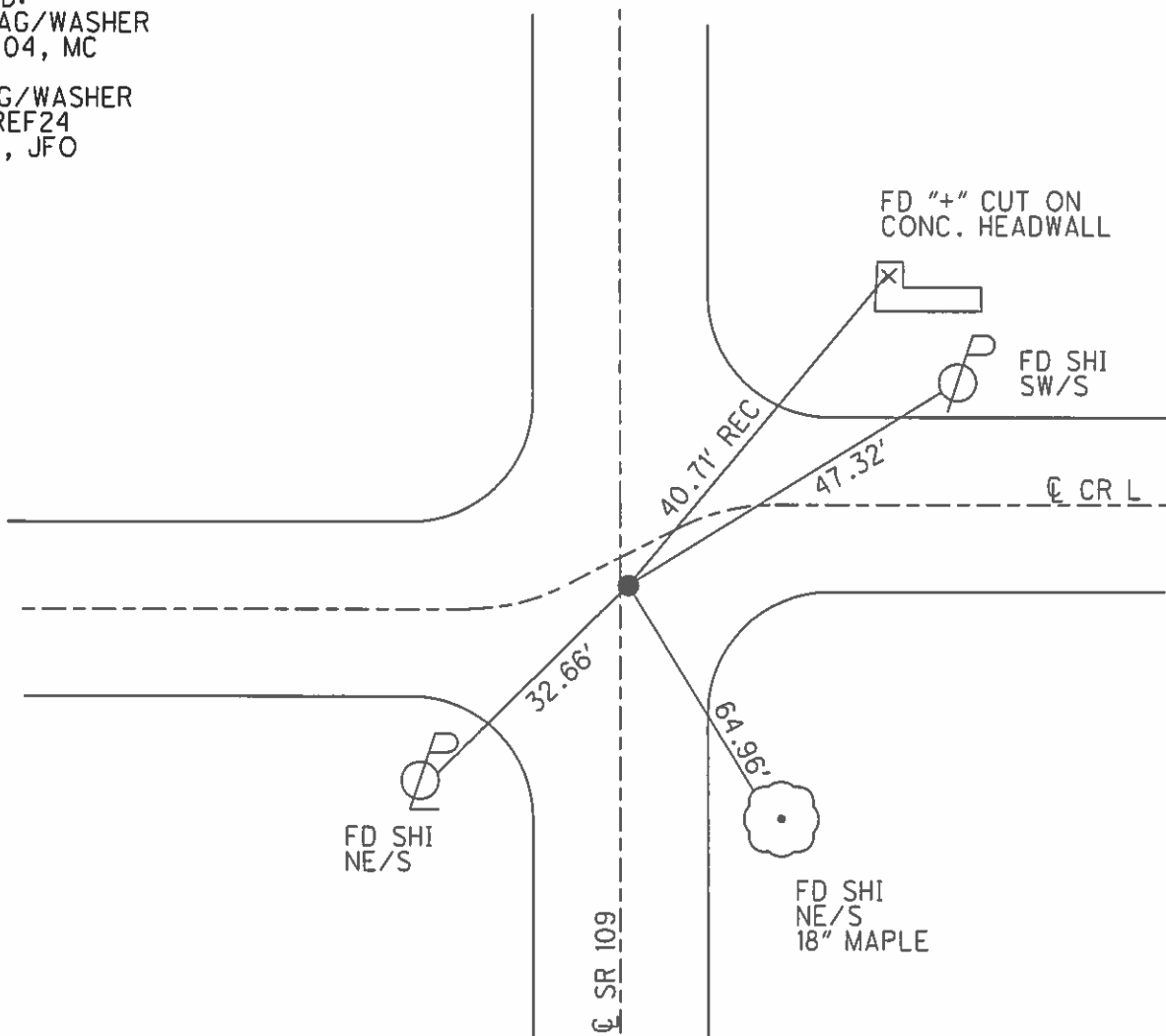
TYPE MONUMENT MAG/WASHER  
 ON SURFACE - ~~BELOW~~ ON  
~~LEFT~~ - CL PAV'T - RIGHT 0.5'  
9.2' TO RT EDGE PAVEMENT  
 S.L.M. 583+69



Grid: Northing: 640241.0807 Easting: 1573133.7245

RECORD:  
 SET MAG/WASHER  
 10-28-04, MC

FD MAG/WASHER  
 GPS, REF24  
 9-2-15, JFO



# O.D.O.T. DISTRICT 2 SURVEY OFFICE

PERSONNEL

REFERENCE NO. 24

SHEET 10 OF 23

NOTES CANTERBURY

H.C. BARNHISEL

R.C. HOOKER

DATE 8/31/04

WEATHER SUN

TEMP. +70°

ROUTE 109

COUNTY HENRY

TOWNSHIP MONROE

SECTION 11

T4 N R 7 E

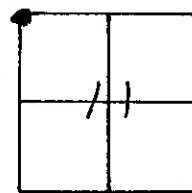
TYPE MONUMENT P.K. SHANK

ON SURFACE - ~~BELOW~~ SURFACE

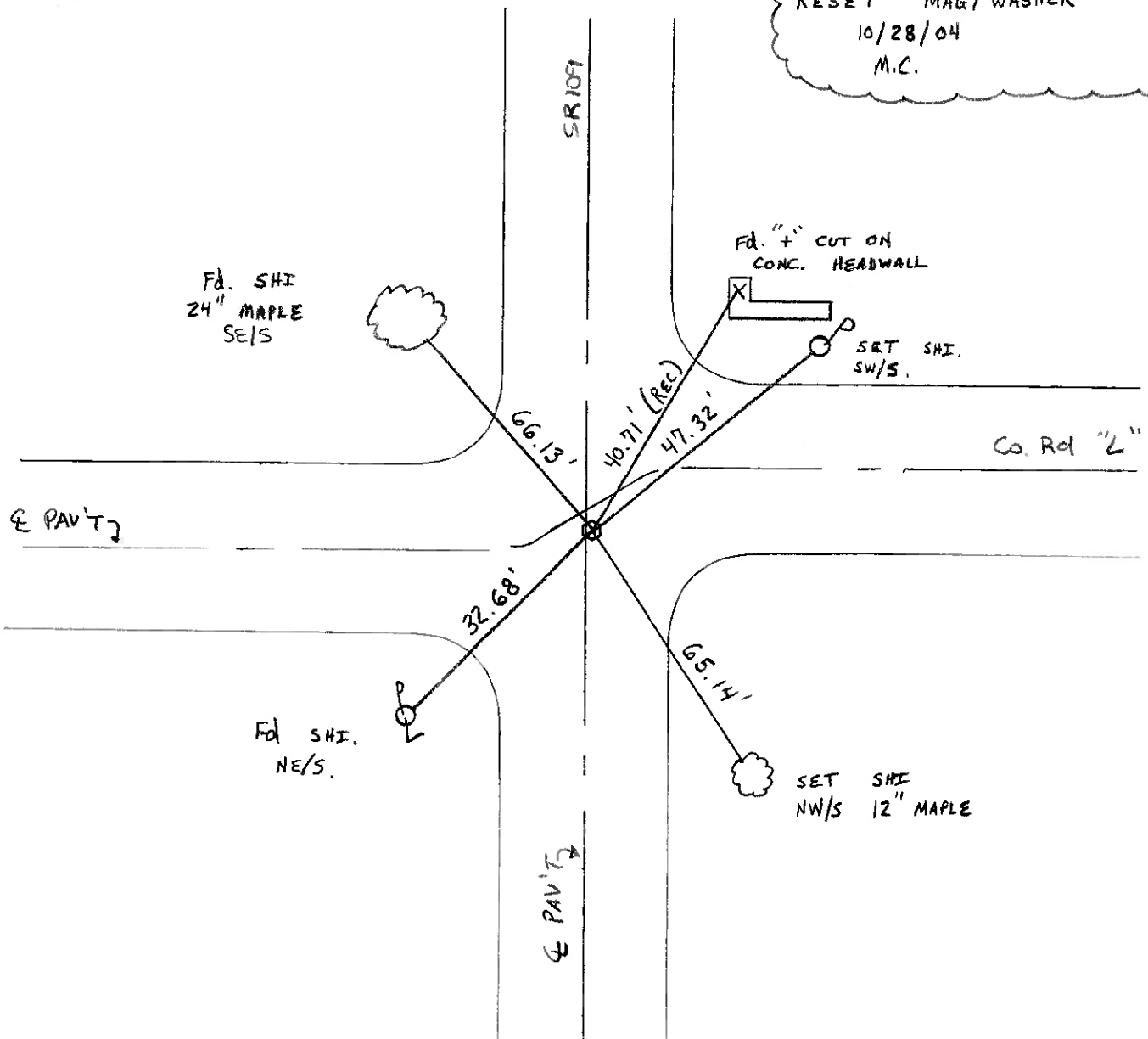
~~LEFT - & PAV'T. - RIGHT~~ 0.5' RT &

9.2' TO RT. EDGE PAVEMENT 3' S. OF & RD. "L" EAST

S.L.M. 583 + 69



RESET MAG/WASHER  
10/28/04  
M.C.



O.D.O.T. DISTRICT 2 SURVEY OFFICE

PERSONNEL \_\_\_\_\_

REFERENCE NO. 24

SHEET \_\_\_\_\_ OF \_\_\_\_\_

NOTES BARNHISEL

H.C. VAN DUSEN

DATE 8-13-93

ROUTE 109

R.C. BARNHISEL

WEATHER JUNNY

COUNTY HENRY

TEMP. +80°F

TOWNSHIP MONROE

SECTION 11

T4 N R 7 E

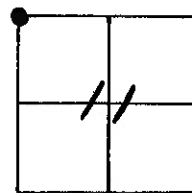
TYPE MONUMENT L.G. RR/SPK.

ON SURFACE - ~~BELOW~~ YES

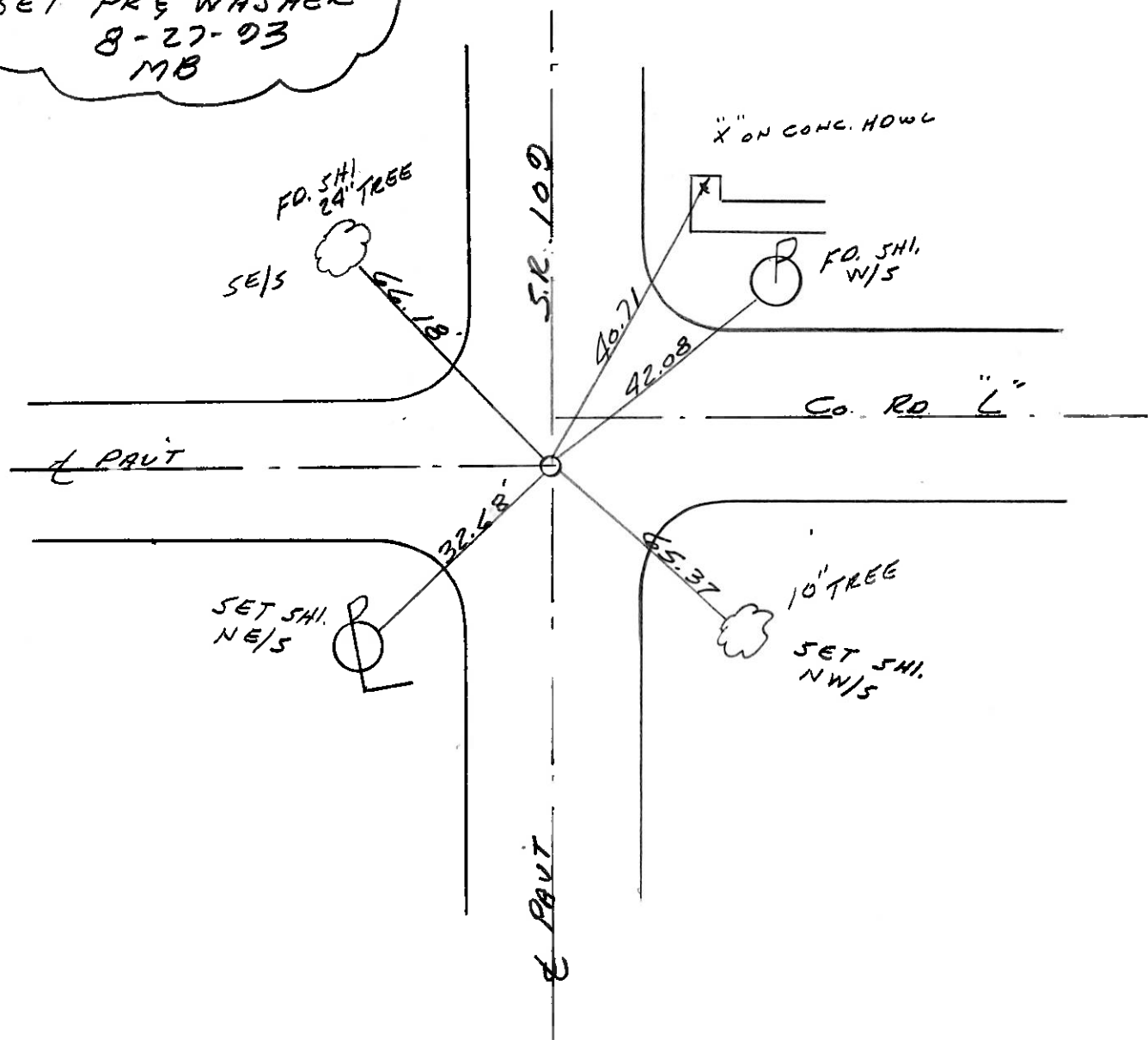
~~LEFT~~ - &lt; PAV'T. - RIGHT 1.0'

TO \_\_\_\_\_ EDGE PAVEMENT 2'S. OF &lt; RR. 2" EAST

S.L.M. 583+69



SET PK&#39; WASHER  
8-27-93  
MB



# O.D.O.T. DISTRICT 2 SURVEY OFFICE

PERSONNEL

REFERENCE NO. 24

SHEET      OF     

NOTES Baerhise

H.C. Hoffman

R.C. Loebcke

DATE 4-8-85

WEATHER cloudy

TEMP. +35°

ROUTE 109

COUNTY Henry

TOWNSHIP Monroe

SECTION 11

T 4 N R 7 E

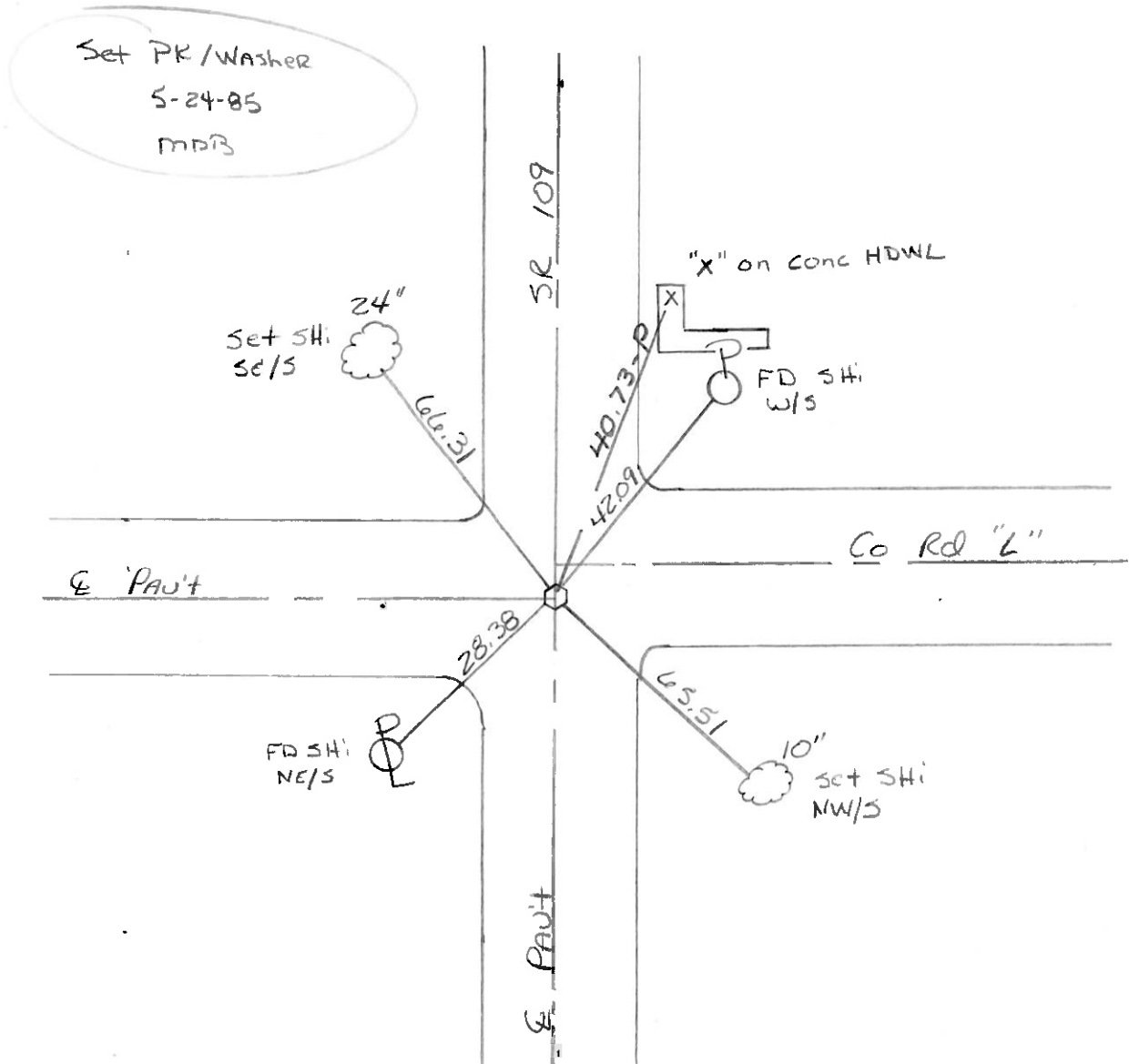
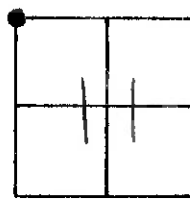
TYPE MONUMENT Lg RR/S PK

ON SURFACE - ~~BELOW~~ ✓

LEFT - ✓ PAV'T. - RIGHT 1.0

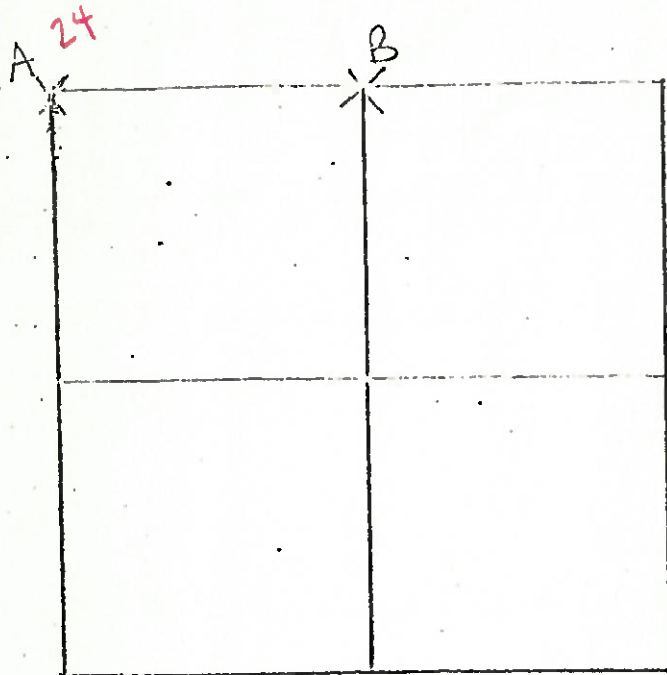
— TO — EDGE PAVEMENT 2' SOF E 28" L" EAST

S.L.M. 583+08



COUNTY HENRY S.R. 109.  
TOWNSHIP MONROE  
SECTION 11

T 1 N 7 E



7-3-79 R.W. G.M. J.J.

A- FOUND ROAT SPIKE 0.63'  
NORTH OF TOP CENTER OF STONE  
(8" x 16" x 11") 23" BELOW ROAD  
SURFACE. REMOVED TOP SPIKE  
AND PLACED CENTER PUNCHED  
R.R. SPIKE ON SURFACE OVER  
TOP CENTER OF STONE  
P.K.'s 6' N. & E.

STONE IS LOCATED 9.2' WEST OF EAST EDGE OF  
18' PAVEMENT

42.06' N.E. TO SHAWER S.W/S P

57.74' S.E. TO DUPLEY S.W/S TREE

28.36' S.W. TO SHAWER N.E/S LIGHT POLE P

67.17' N.N.W. TO DUPLEY E/S MAPLE TREE

7-6-79 R.W. J.J.

B- FOUND RECORDED IRON PIPE 2.75' NORTH AND 0.55' EAST  
OF HIGH POINT OF STONE (8" x 16" x 11") 16" BELOW ROAD SURFACE.

ALSO FOUND SMALL SANDSTONE OVER HIGH POINT. REMOVED IRON  
PIPE AND SMALL SANDSTONE. PLACED CENTER PUNCHED

RAILROAD SPIKE ON SURFACE OVER HIGH POINT OF STONE

P.K.'s 6' S. & W. STONE IS 8' NORTH OF SOUTH EDGE OF 18' PAVEMENT

75.35' E.N.E. TO DUPLEX S.W/S P

80.09' E.S.E. TO 30D SPIKE S.W/S P

27.33' S. TO DUPLEX N.E/S P

PERSONNEL \_\_\_\_\_ TITLE \_\_\_\_\_ PERSONNEL \_\_\_\_\_ TITLE \_\_\_\_\_  
 COUNTY Henry DATE 2-6-58  
 S. R. #109 WEATHER \_\_\_\_\_  
 SEC. \_\_\_\_\_ TEMP. \_\_\_\_\_  
 DESCRIPTION Malinta JOB NO. \_\_\_\_\_

Control Points checked by Jameson 3-6-58

	LEFT	CENTER LINE	RIGHT
22	#72 Iron Pin South Corp Line Sta 530+16.2	60.80 ✓ 39.20 ✓ 41.35 ✓	#1.07' N.W. To Shi. P. Pole <del>21.65</del> ' S.W. To SHINER <del>21.55</del> ' S.E. To SHINER 2? 51.60' NW TO CONC FOUNDATION 1' FROM GRND 43.0' NE TO SHINER IN MAPLE TREES <del>46.83</del> ' N.E. To NEAR side pipe in 33.28' S.E. To SHINER N.W. CONC. 38.30' S.W. Side, T Pole 60.39' S.W. To N.E. Cor. Tile Block Garage
23	#73 IRON PIN. OK 2/6/58 Sta 556+44.15 Twp. Rd. K. 2 Angle 00°-17' H. Ford.		
24	#74 Iron Pipe North Corp Line Co. Rd. L Sta 583+22.38	OK 2/6/58	.26 80.41' N.W. To S.E. Cor. Walk To Porch .29 40.45' N.E. To X on Hdw. 41.30' E.N.E. " " " "