

O.D.O.T. DISTRICT 2 SURVEY OFFICE (USE ONLY)

PERSONNEL \_\_\_\_\_ REFERENCE NO. 26 SHEET 13 OF 36

NOTES RHOADES DATE 6/27/22 ROUTE SR 109

H.C. AUBLE WEATHER SUNNY COUNTY HENRY

R.C. RHOADES TEMP. 67° TOWNSHIP MONROE

DWG BY RHOADES PID PAVETRAIN SECTION 3

T 4 N R 7 E

TYPE MONUMENT SM.R.R.SPIKE

ON SURFACE - ~~BELOW~~ ON \_\_\_\_\_

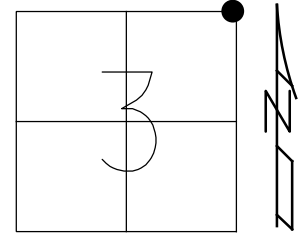
OFFSET Q PAVEMENT 83.1' LT : ~~RT~~

5' TO S EDGE PAVEMENT

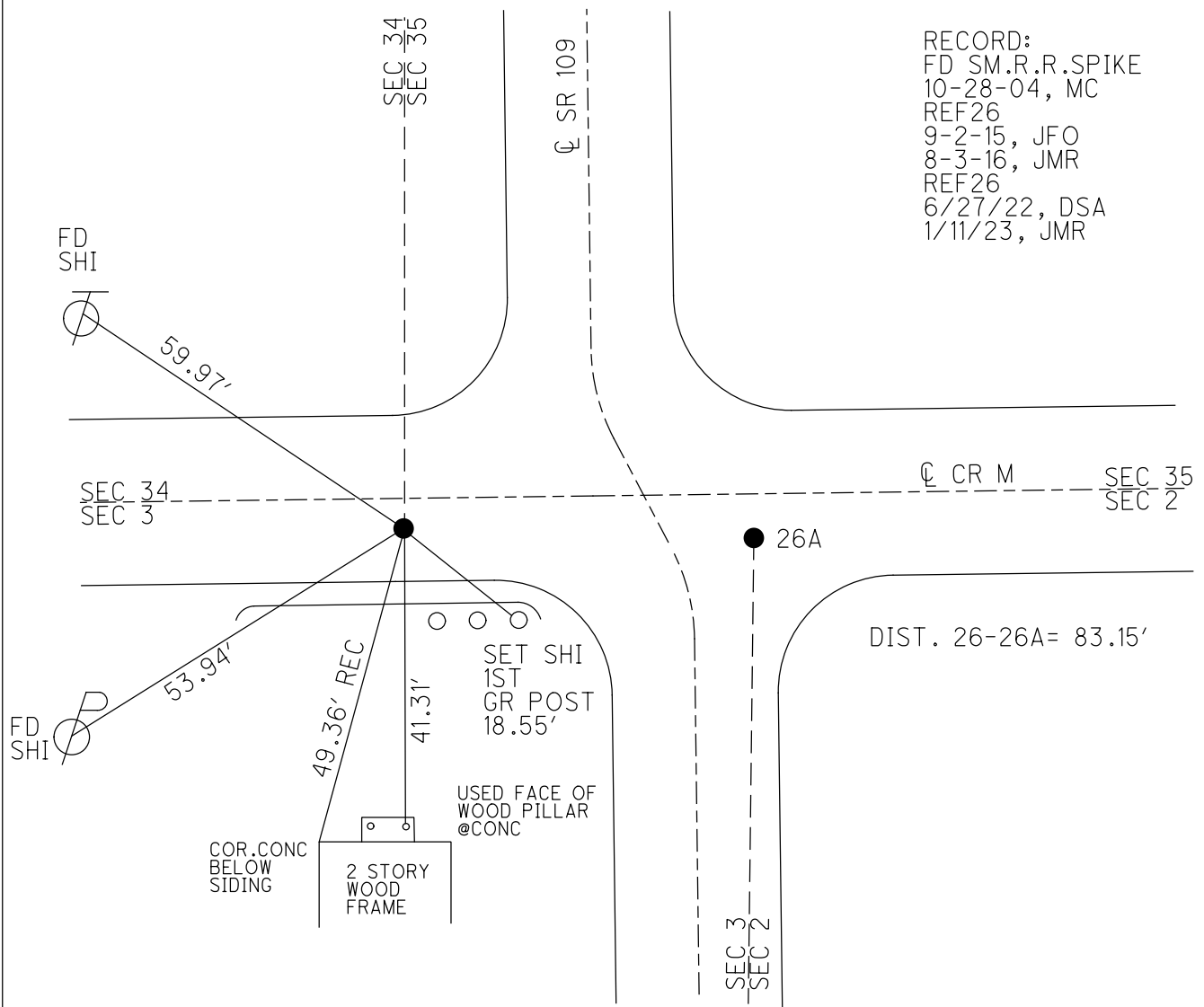
STATION: 637+82

HORZ.DATUM: NAD83 2011 GEOID: NAVD88 2018

GRID: NORTHING: 613990.099 EASTING: 1546109.261



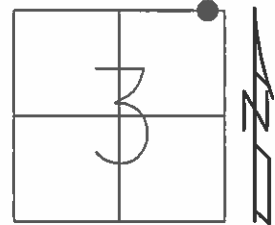
RECORD:  
 FD SM.R.R.SPIKE  
 10-28-04, MC  
 REF26  
 9-2-15, JFO  
 8-3-16, JMR  
 REF26  
 6/27/22, DSA  
 1/11/23, JMR



O.D.O.T. DISTRICT 2 SURVEY OFFICE (USE ONLY)

PERSONNEL \_\_\_\_\_ REFERENCE NO. 26 SHEET 13 OF 38  
 NOTES RHOADES DATE 9-3-15 ROUTE SR 109  
 H.C. O'DONNELL WEATHER CLEAR COUNTY HENRY  
 R.C. RHOADES TEMP. 88°F TOWNSHIP MONROE  
 SECTION 3  
 T 4 N R 7 E

TYPE MONUMENT SM. RR. SPIKE  
~~ON SURFACE - BELOW 2"~~  
 LEFT - ☉ PAV'T - RIGHT 83.1'  
5.0' TO S EDGE PAVEMENT  
 S.L.M. 638+17



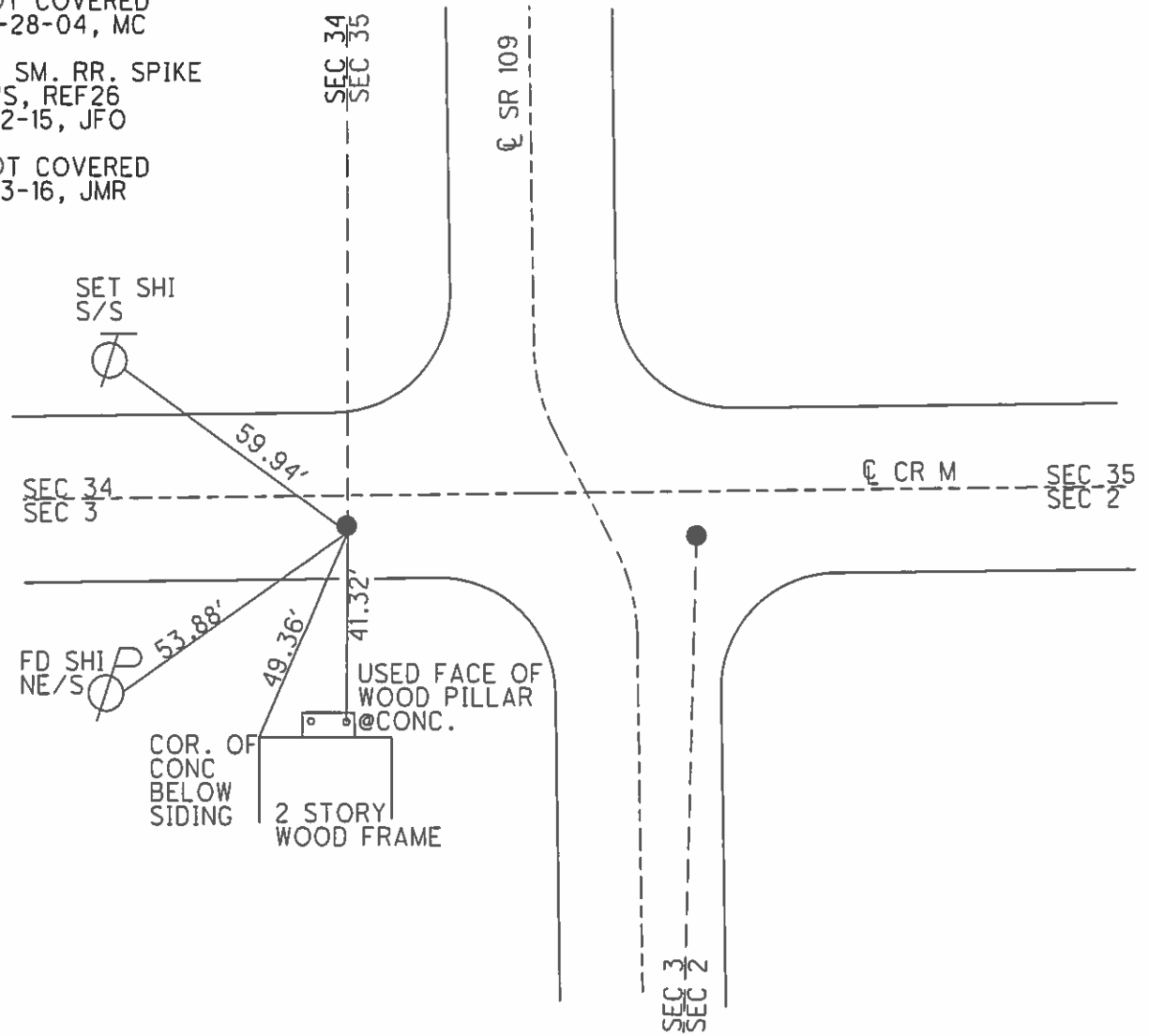
Grid: Northing: 613990.0988 Easting: 1546109.2607

RECORD:  
 NOT COVERED  
 10-28-04, MC

DIST. 26-26A= 83.15'

FD SM. RR. SPIKE  
 GPS, REF 26  
 9-2-15, JFO

NOT COVERED  
 8-3-16, JMR



# O.D.O.T. DISTRICT 2 SURVEY OFFICE

PERSONNEL

REFERENCE NO. 26

SHEET 12 OF 23

NOTES CANTERBURY

H.C. BARNHISEL

R.C. HOOVER

DATE 8/31/04

WEATHER SUN

TEMP. +70°

ROUTE SR 109

COUNTY HENRY

TOWNSHIP MONROE

SECTION 2, 3, 34, 35

T 4 N R 7 E

PT "A"

PT "B"

TYPE MONUMENT LG R.R. SPK.

P.K./WASHER

ON SURFACE - BELOW 2" DOWN

SURFACE

LEFT - ☉ PAV'T. - RIGHT 83.1' LT ☉

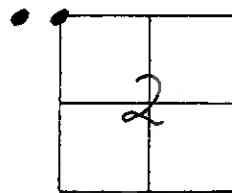
19' RT ☉

PT "A" 5.0' TO S. EDGE PAVEMENT 3.3' S. OF CO. RD.

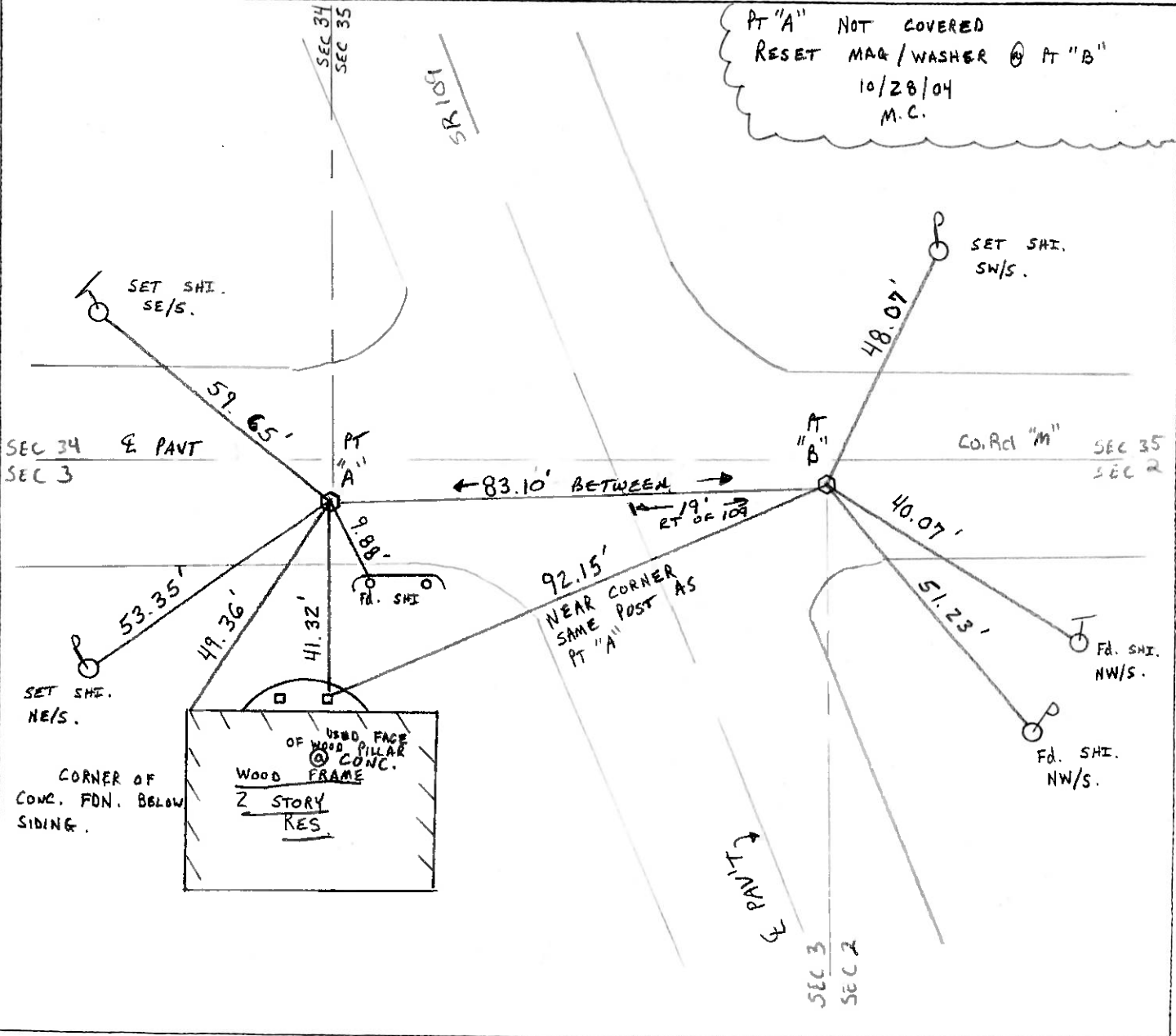
0.5' S. OF CO. RD. "M"

S.L.M. 638+17

638+17



PT "A" NOT COVERED  
 RESET MARK/WASHER @ PT "B"  
 10/28/04  
 M.C.



# O.D.O.T. DISTRICT 2 SURVEY OFFICE

PERSONNEL \_\_\_\_\_

REFERENCE NO. 26

SHEET \_\_\_\_\_ OF \_\_\_\_\_

NOTES BARNHISEL

H.C. VAN DUSEN

DATE 8-13-93

ROUTE SR 109

R.C. BARNHISEL

WEATHER JUNNY

COUNTY HENRY

TEMP. +80° F

TOWNSHIP MONROE

SECTION 2, 3, 34, 35

T 4 N R 7 E

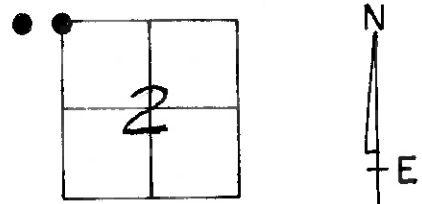
TYPE MONUMENT LG. RR/SPK.

ON SURFACE - ~~BELOW~~ YES

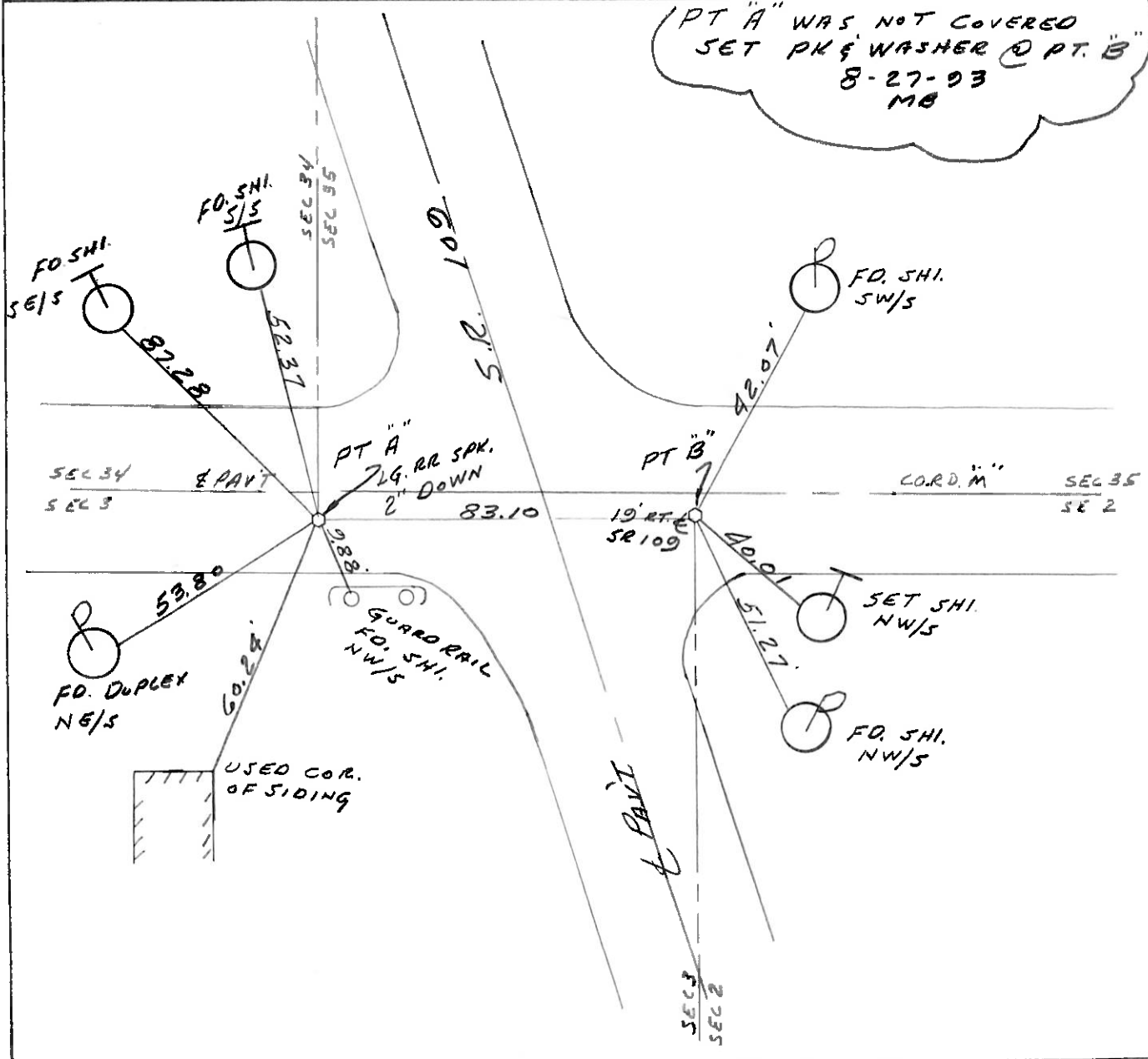
LEFT - 0 PAV'T. - RIGHT PT. A 3.3 PT. B 1.5 Co. RD. "M"

PT. A 5.0 TO RT. EDGE PAVEMENT

S.L.M. 638 + 0 6



PT "A" WAS NOT COVERED  
 SET PK & WASHER @ PT. "B"  
 8-27-93  
 MB



# O.D.O.T. DISTRICT 2 SURVEY OFFICE

PERSONNEL

REFERENCE NO. 26

SHEET      OF     

NOTES Baehisel

H.C. Hoffman

R.C. Loehrke

DATE 4-8-85

WEATHER Cloudy - Flurries

TEMP. +35°

ROUTE 109

COUNTY Henry

TOWNSHIP Monroe

SECTION 2

T 4 N R 7 E

TYPE MONUMENT Lg RR/SPK

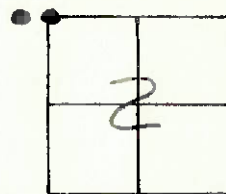
ON SURFACE - BELOW ✓

LEFT - ☉ PAV'T. - RIGHT Pt "A" 3.5 Pt "B" 1.5

S.3 TO R+ EDGE PAVEMENT

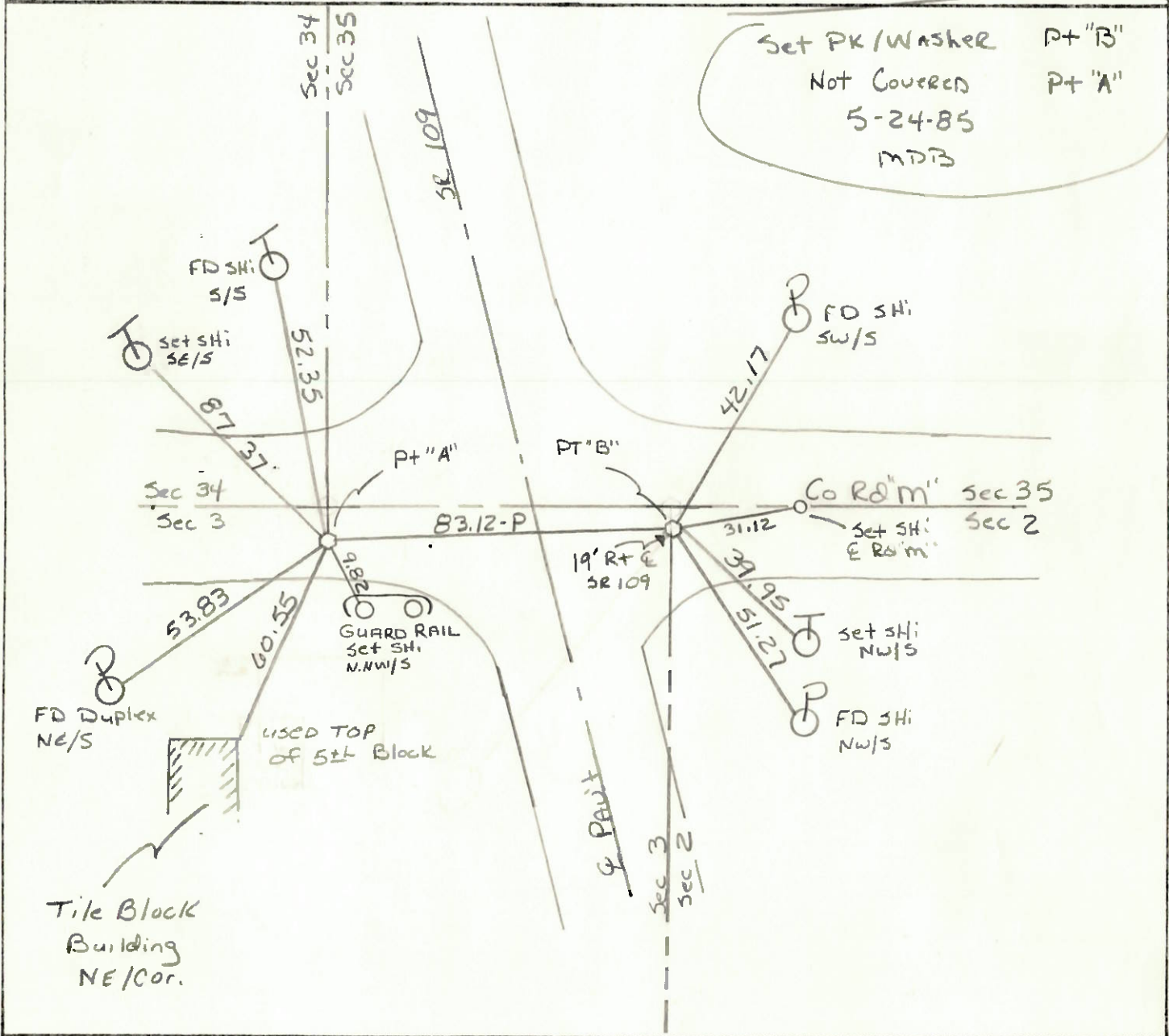
S.L.M. 637+54

Co Rd "M"



Set PK/Washer Pt "B"  
Not Covered Pt "A"  
5-24-85  
MDTB

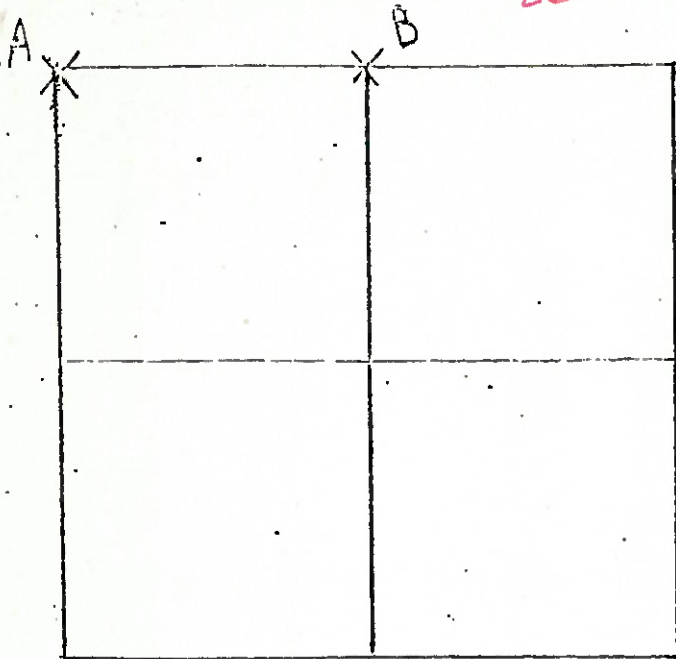
Pt "A"



COUNTY HENRY S.R. 109  
 TOWNSHIP MONROE  
 SECTION 2

SHEET No. 1 of 6  
 T 1 N R 7 E

26



7-3-79 R.W. G.M. J.J.

A - FOUND P.K. NAIL ON SURFACE 1.04' SOUTH OF ROW BOLT OVER SANDSTONE OVER CORNER STONE (8" X 12" X 15") 23" BELOW ROAD SURFACE. REMOVED P.K. FROM BOLT AND SANDSTONE PLACED CENTER PUNCHED P.K. SPIKE ON SURFACE OVER

POINT OF STONE. SET P.K.'S 6' N. & W.

42.17' N.E. TO SHINER S.W/S

51.26' S.E. TO SHINER N.W/S

54.17' W.S.W. TO "+" TOP 24" DIA CONCRETE PIPE

83.09' W. TO S.W. CORNER SECTION 35 HARRISON TWP.

6-29-79 R.W. G.M.

B - CORNER LOST; RE-ESTABLISHED BY SETTING CENTER PUNCHED P.R. SPIKE ON SOUTH LINE OF SEC 35 HARRISON TWP. AT PROPORTED DISTANCE BETWEEN S4 POST & S.E. CORNER SECTION 35 HARRISON TWP. P.K.'S SET 6' S. & W.  
 67.89' W.N.W. TO "+" CONCRETE BASE FOR FENCE POST  
 82.13' E.S.E. TO DUPLEX N/S  
 59.02' W.S.W. TO "+" S.W. WINGWALL

