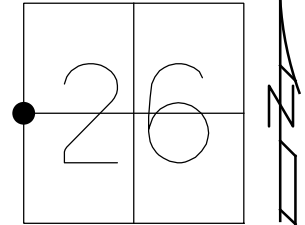


O.D.O.T. DISTRICT 2 SURVEY OFFICE (USE ONLY)

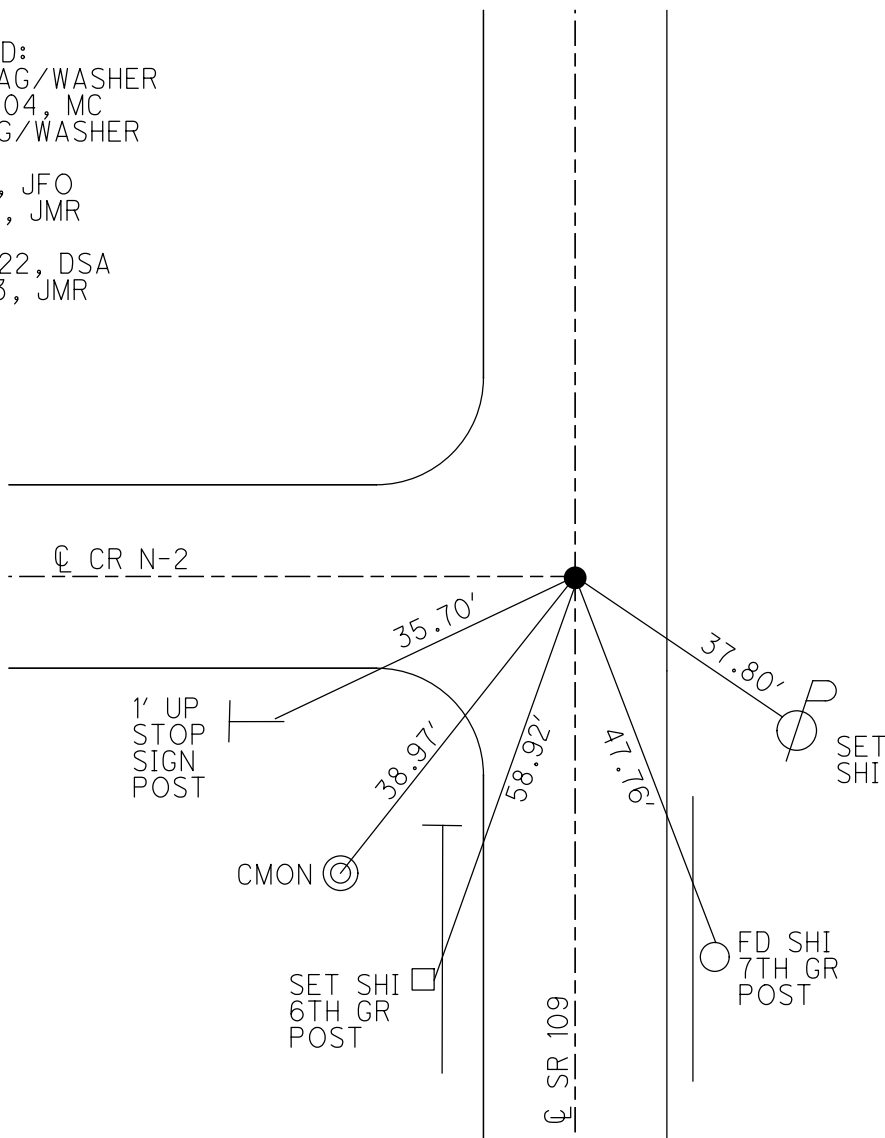
PERSONNEL \_\_\_\_\_ REFERENCE NO. 29 SHEET 17 OF 36  
 NOTES RHOADES DATE 6/27/22 ROUTE SR 109  
 H.C. AUBLE WEATHER SUNNY COUNTY HENRY  
 R.C. RHOADES TEMP. 67° TOWNSHIP HARRISON  
 DWG BY RHOADES PID PAVETRAIN SECTION 35  
 T 5 N R 7 E

TYPE MONUMENT MAG/WASHER  
 ON SURFACE - ~~BELOW~~ ON  
 OFFSET  $\odot$  PAVEMENT ON LT : RT  
9.9' TO RT EDGE PAVEMENT  
 STATION: 717+55.2



HORZ.DATUM: NAD83 2011 GEOID: NAVD88 2018  
 GRID: NORTHING: 621932.633 EASTING: 1546250.299

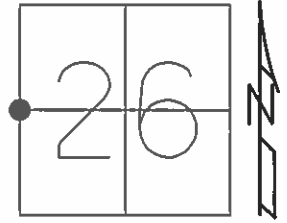
RECORD:  
 SET MAG/WASHER  
 10-28-04, MC  
 FD MAG/WASHER  
 REF29  
 9-1-15, JFO  
 8-3-16, JMR  
 REF29  
 6/27/22, DSA  
 1/11/23, JMR



O.D.O.T. DISTRICT 2 SURVEY OFFICE (USE ONLY)

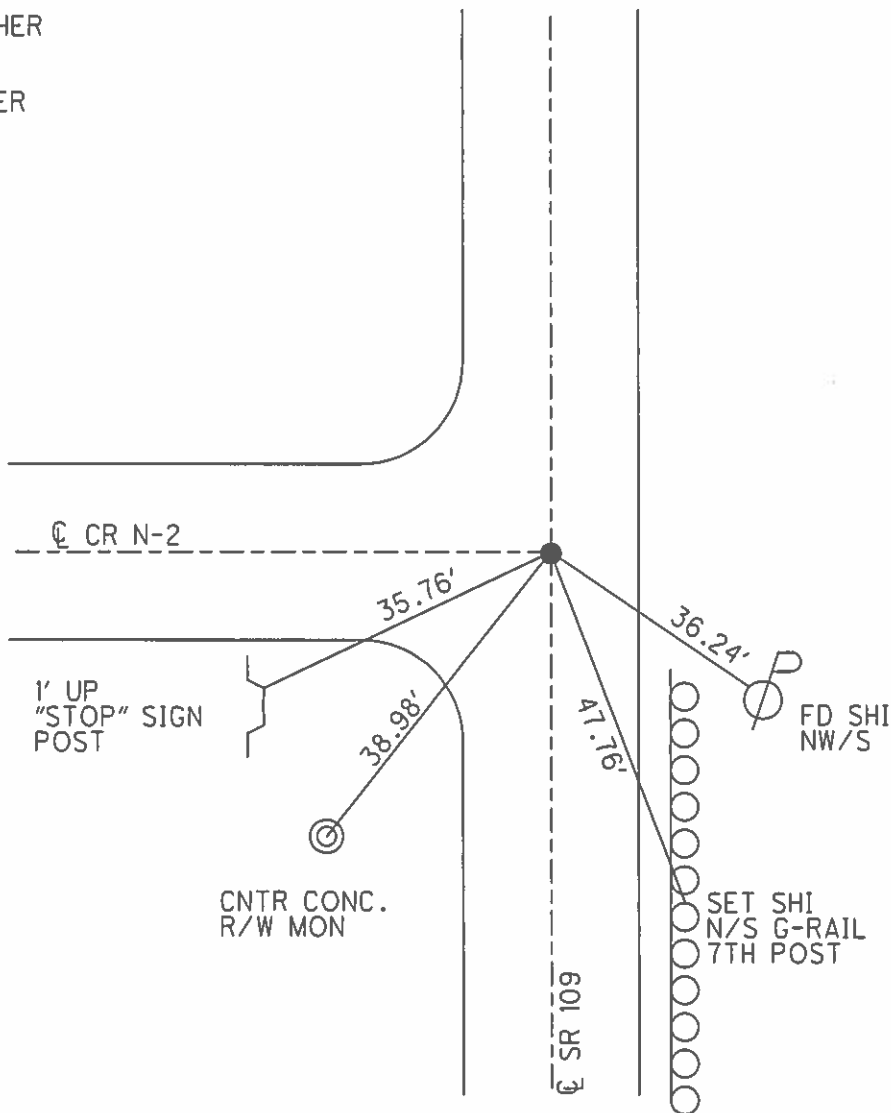
PERSONNEL \_\_\_\_\_ REFERENCE NO. 29 SHEET 17 OF 38  
 NOTES RHOADES DATE 9-3-15 ROUTE SR 109  
 H.C. O'DONNEELL WEATHER CLEAR COUNTY HENRY  
 R.C. RHOADES TEMP. 88°F TOWNSHIP HARRISON  
 \_\_\_\_\_ SECTION 35  
 \_\_\_\_\_ T 5 N R 7 E

TYPE MONUMENT MAG/WASHER  
 ON SURFACE - ~~BELOW~~ ON  
 LEFT - ☉ PAV'T - RIGHT ON  
9.9' TO RT EDGE PAVEMENT  
 S.L.M. 717+44



Grid: Northing: 621932.6331 Easting: 1546250.2991

RECORD:  
 SET MAG/WASHER  
 10-28-04, MC  
 FD MAG/WASHER  
 GPS, REF29  
 9-1-15, JFO  
 NOT COVERED  
 8-3-16, JMR



# O.D.O.T. DISTRICT 2 SURVEY OFFICE

PERSONNEL

REFERENCE NO. 29

SHEET 15 OF 23

NOTES CANTERBURY

H.C. BARNHISEL

R.C. HOOVER

DATE 8-31-04

WEATHER SUN

TEMP. +75°

ROUTE SR 109

COUNTY HENRY

TOWNSHIP HARRISON

SECTION 26

T S N R 7 E

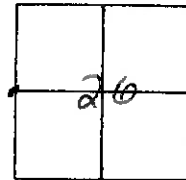
TYPE MONUMENT P.K / WASHER

ON SURFACE - BELOW SURFACE

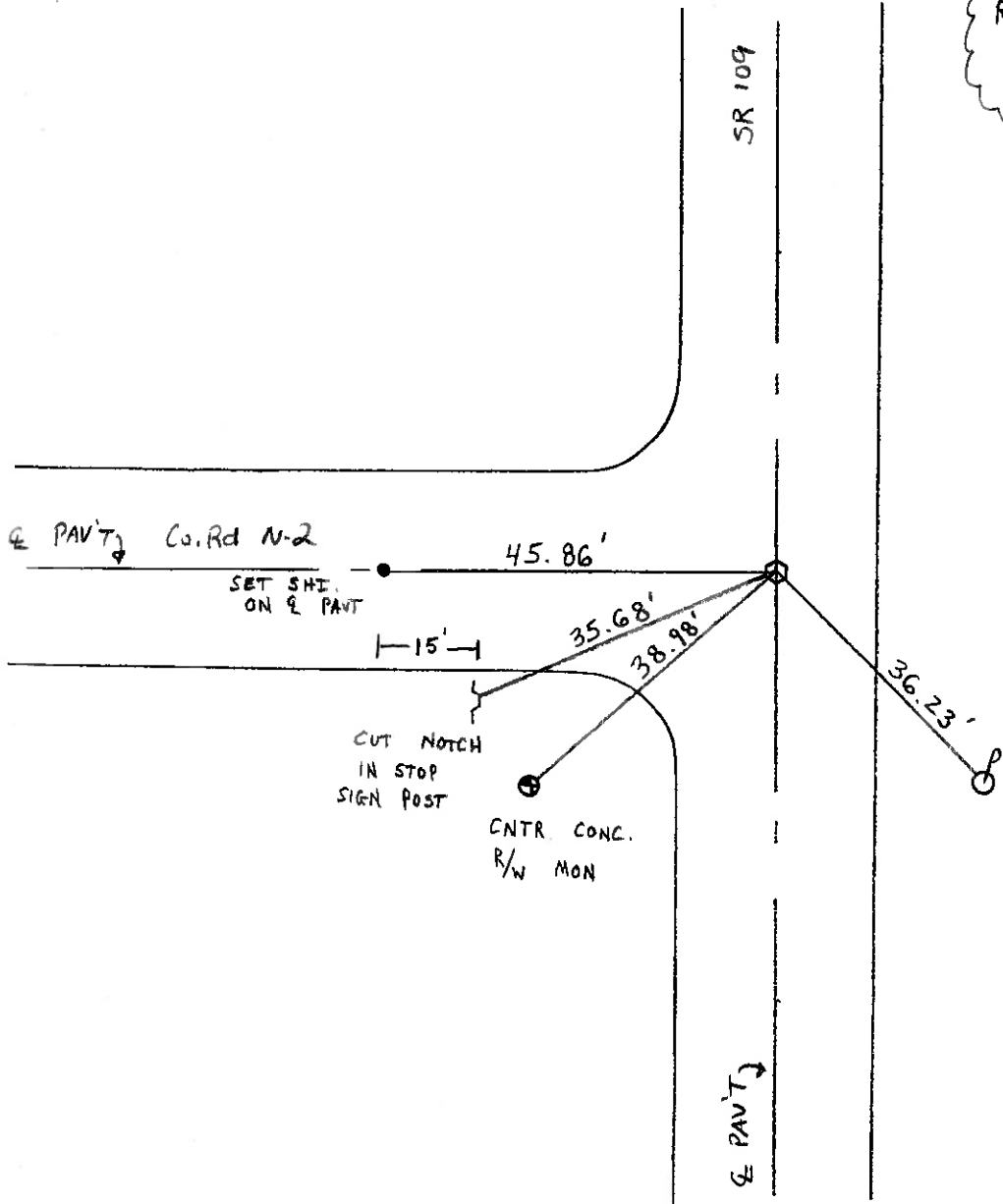
~~LEFT - & PAV'T. - RIGHT~~ ON & BOTH

9.9' TO RT. EDGE PAVEMENT

S.L.M. 717 + 44



RESET MAR/WASHER  
 10/28/04  
 M.C.



# O.D.O.T. DISTRICT 2 SURVEY OFFICE

PERSONNEL \_\_\_\_\_

REFERENCE NO. 29

SHEET \_\_\_\_\_ OF \_\_\_\_\_

NOTES BARNHISEL

H.C. VAN DUSEN

R.C. BARNHISEL

DATE 8-13-93

WEATHER SUNNY

TEMP. +80°F

ROUTE SR 109

COUNTY HENRY

TOWNSHIP HARRISON

SECTION 26

T5 N R 7 E

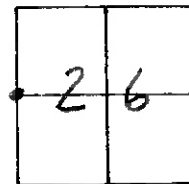
TYPE MONUMENT LG. RR/SPK.

ON SURFACE - BELOW YES

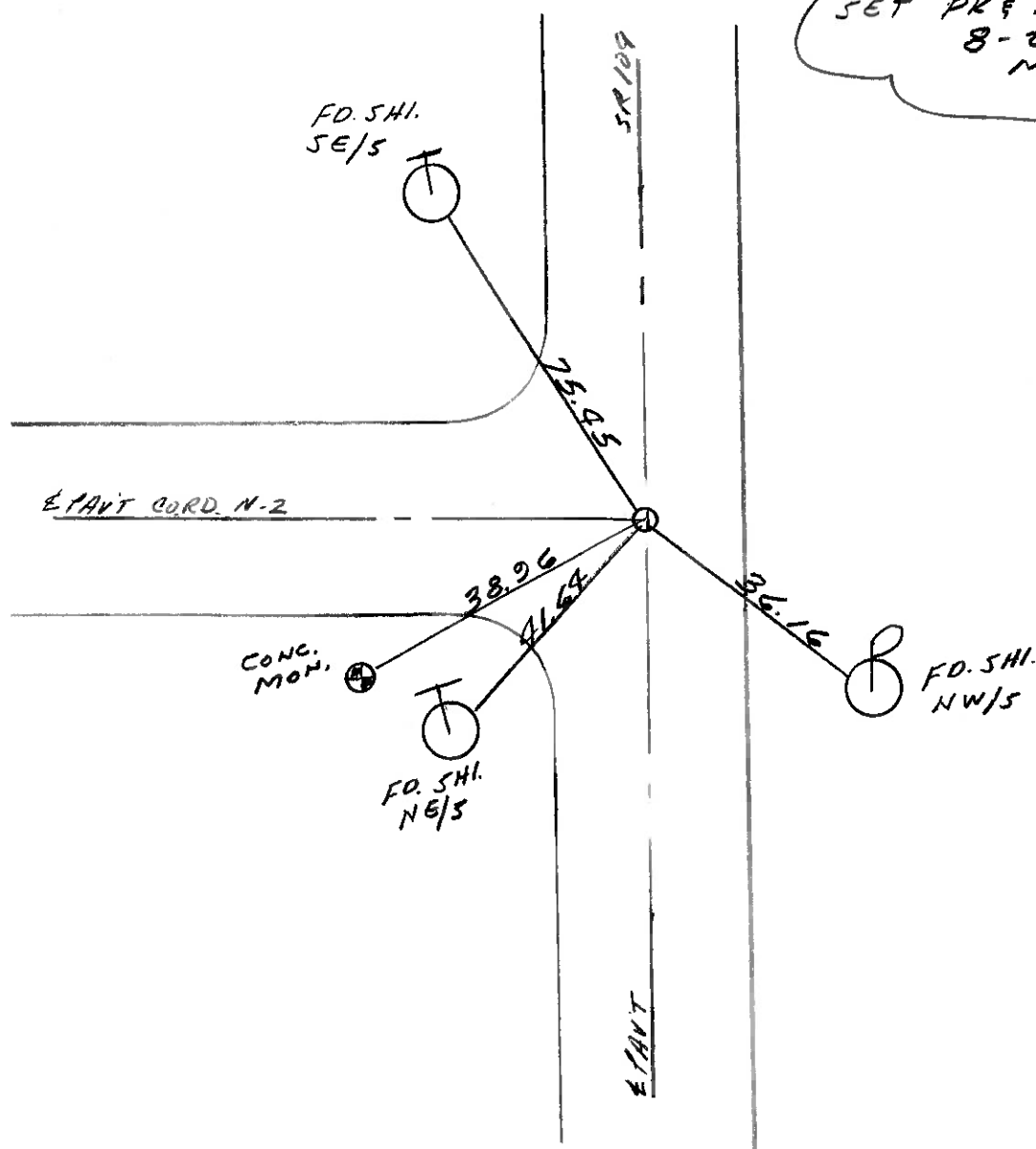
LEFT - PAV'T. - RIGHT YES

10.2 FT. EDGE PAVEMENT

S.L.M. 717+43



SET PK & WASHER  
8-27-93  
MB



# O.D.O.T. DISTRICT 2 SURVEY OFFICE

PERSONNEL \_\_\_\_\_

REFERENCE NO. 29

SHEET \_\_\_\_\_ OF \_\_\_\_\_

NOTES Barnhiser

H.C. Hoffman

DATE 4-8-85

ROUTE 109

R.C. Loehrke

WEATHER cloudy

COUNTY Henry

TEMP. +35°

TOWNSHIP Harrison

SECTION 26

T 5 N 7 E

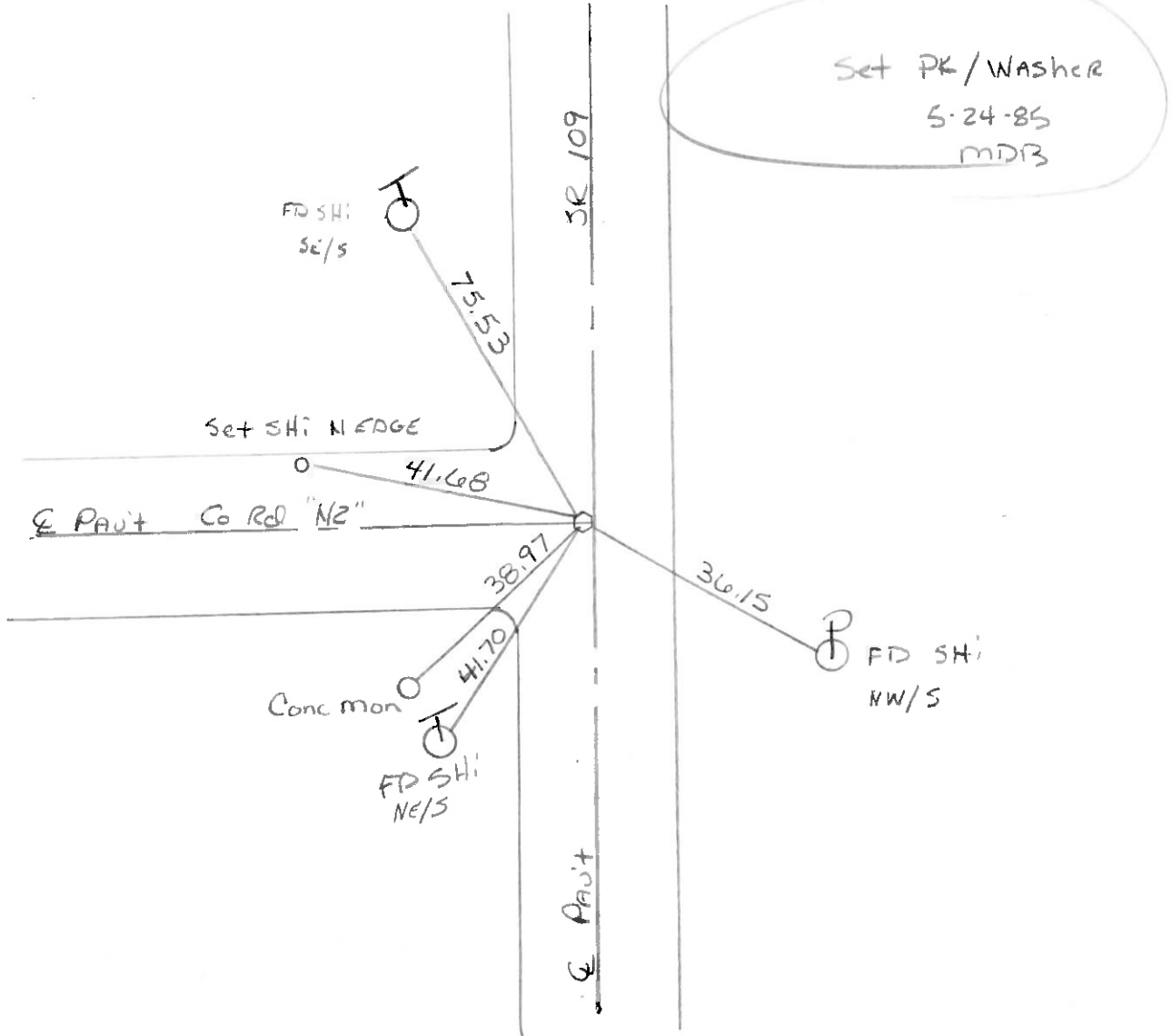
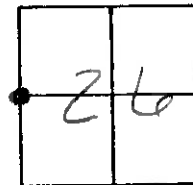
TYPE MONUMENT Lg RR/SPK

ON SURFACE - BELOW ✓

LEFT-☉ PAV'T. - ~~RIGHT~~ 0.6

10. TO Rt EDGE PAVEMENT

S.L.M. 717+06



ODOT. DISTRICT 2 SURVEY OFFICE

SHEET \_\_\_\_\_ OF \_\_\_\_\_

County HENRY S.R. 109

Date 6-1-82

Township Harrison

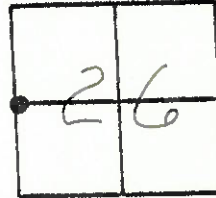
Weather cloudy

Section 26

Temp. +72°

T5N, R7E

Personnel Hoffman



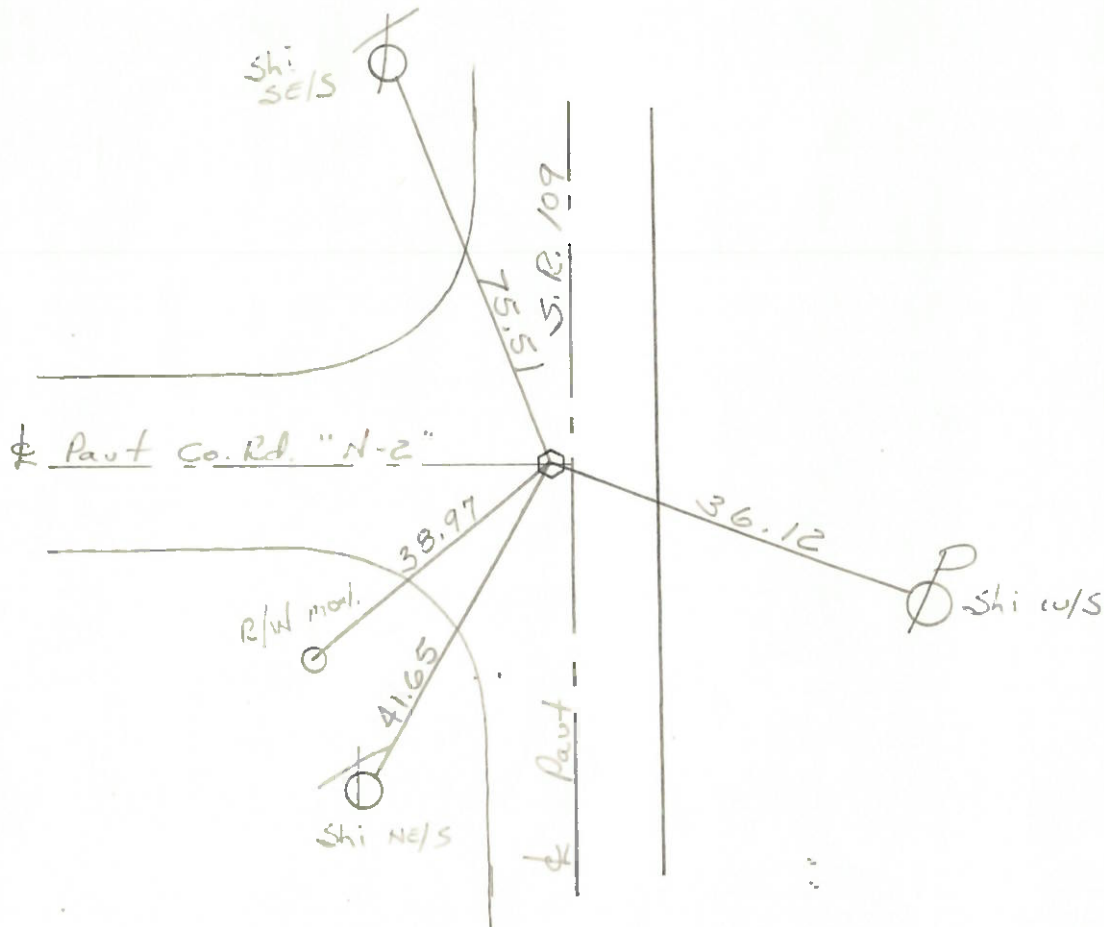
Loehrke

Householder

\_\_\_\_\_

\_\_\_\_\_

Fd. R.R. Spk 1" Below surface; set by County  
0.6' West of  $\phi$  Paut S R 109  
on  $\phi$  Co. Rd "N-2"



PERSONNEL	TITLE	PERSONNEL	TITLE
BURNSIDE			
SMITH			
BOWERS			
MEAD			

COUNTY HENRY DATE 9-17-76  
 S. R. 109 WEATHER CLOUDY  
 SEC. \_\_\_\_\_ TEMP. +65°

DESCRIPTION REF. TO CONTROL POINTS JOB NO. \_\_\_\_\_

