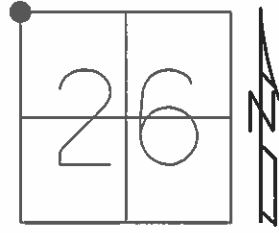


O.D.O.T. DISTRICT 2 SURVEY OFFICE (USE ONLY)

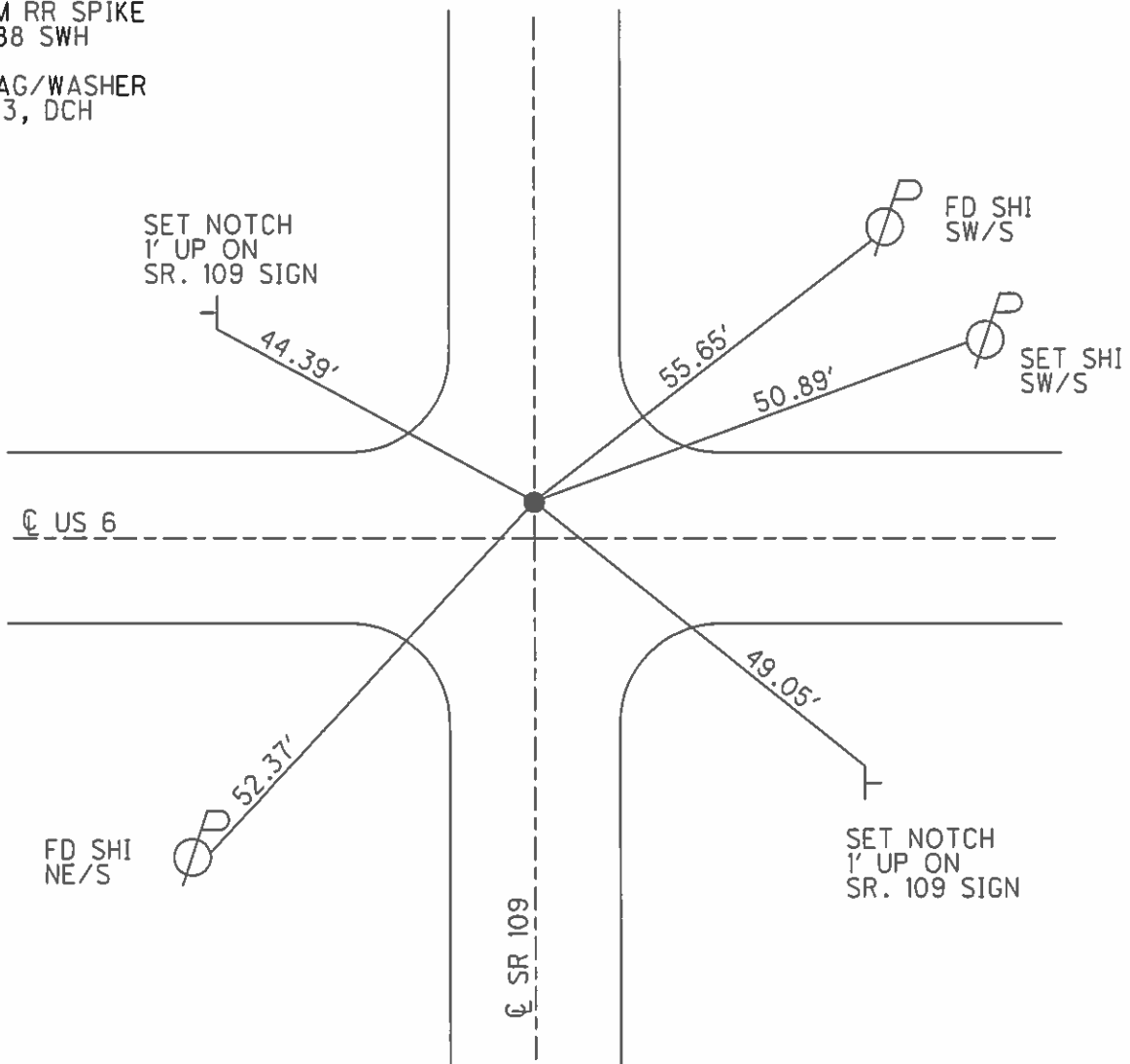
PERSONNEL \_\_\_\_\_ REFERENCE NO. 30 SHEET 18 OF 38

NOTES HOFFMAN DATE 3-19-84 ROUTE SR 109  
 H.C. BARNHISEL WEATHER OVERCAST COUNTY HENRY  
 R.C. HOUSEHOLDER TEMP. 30°F TOWNSHIP HARRISON  
 \_\_\_\_\_ SECTION 26  
 \_\_\_\_\_ T 5 N R 7 E

TYPE MONUMENT PK NAIL  
 ON SURFACE - ~~BELOW~~ ON  
 LEFT - ☉ PAV'T - RIGHT ON  
 \_\_\_\_\_ TO \_\_\_\_\_ EDGE PAVEMENT  
 S.L.M. 743+95  
 Grid: Northing: \_\_\_\_\_ Easting: \_\_\_\_\_



RECORD:  
 SET SM RR SPIKE  
 6-20-88 SWH  
 SET MAG/WASHER  
 4-21-03, DCH



County HENRY S.R. 109 & U.S. 6

Date 3-19-84

Township HARRISON

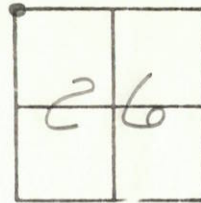
Weather OVERCAST

Section 26

Temp. +30°

TSN, R7E

Personnel HOFFMAN



#30 - SR 109

LOSHBIE

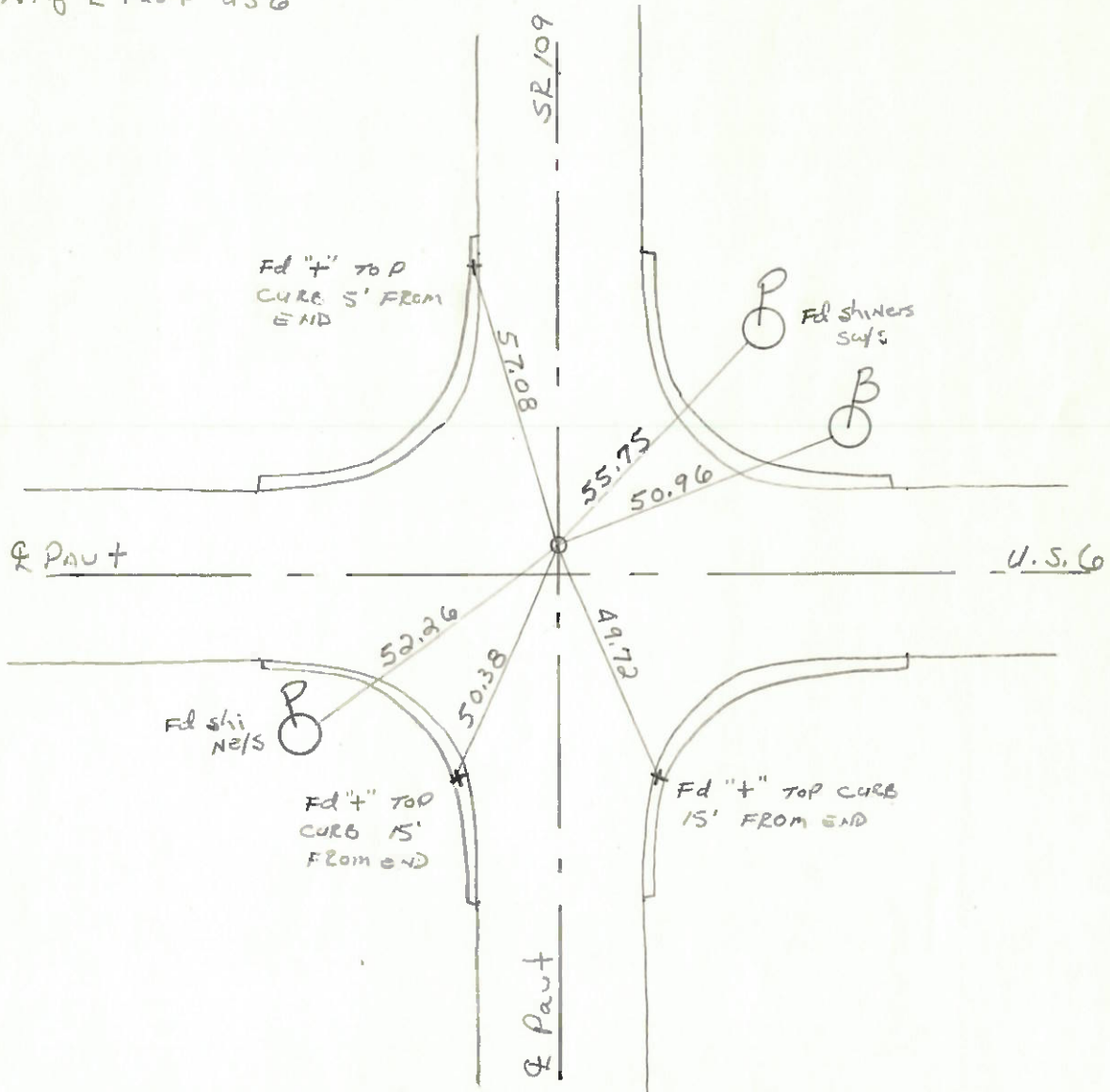
HOUSEHOLDER R.C.

BARNHILL H.C.

#45 - US 6

Fd P.K. Nail @ SURFACE  
ON E PAUT SR 109  
1.0' N. of E PAUT US 6

SR 109 SLM = 743 + 95



Q.D.O.T. DISTRICT 2 SURVEY OFFICE

SHEET \_\_\_\_\_ OF \_\_\_\_\_

County HENRY S.R. 109 E.U.S. 6

Date 6-1-82

Township HARRISON

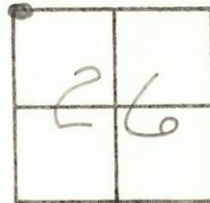
Weather cloudy

Section 26

Temp. +72°

T5, N, R7E

Personnel Hoffman



#45-US6

#30-SR.109

Fd. P.K. on surface  
on & Pavt S.R. 109  
1.0' North of & Pavt U.S. 6

