

O.D.O.T. DISTRICT 2 SURVEY OFFICE (USE ONLY)

PERSONNEL _____

REFERENCE NO. 33

SHEET 23 OF 39

NOTES CORDES

DATE 8/27/04

ROUTE SR 109

H.C. BARNHESEL

WEATHER OVERCAST

COUNTY HENRY

R.C. HOOKE

TEMP. 80°

TOWNSHIP HARRISON

SECTION 14

DWG BY RHOADES

PID PAVTRAIN

T 5 N R 7 E

TYPE MONUMENT MONBOX W/1" IPIN

ON SURFACE - ~~BELOW~~ ON

OFFSET 2.8' TO LT EDGE PAVEMENT

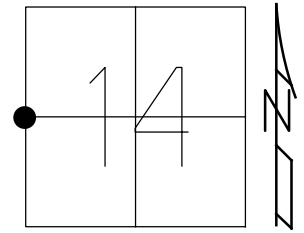
STATION: 823+36

HORIZ.DATUM: NAD83 2011

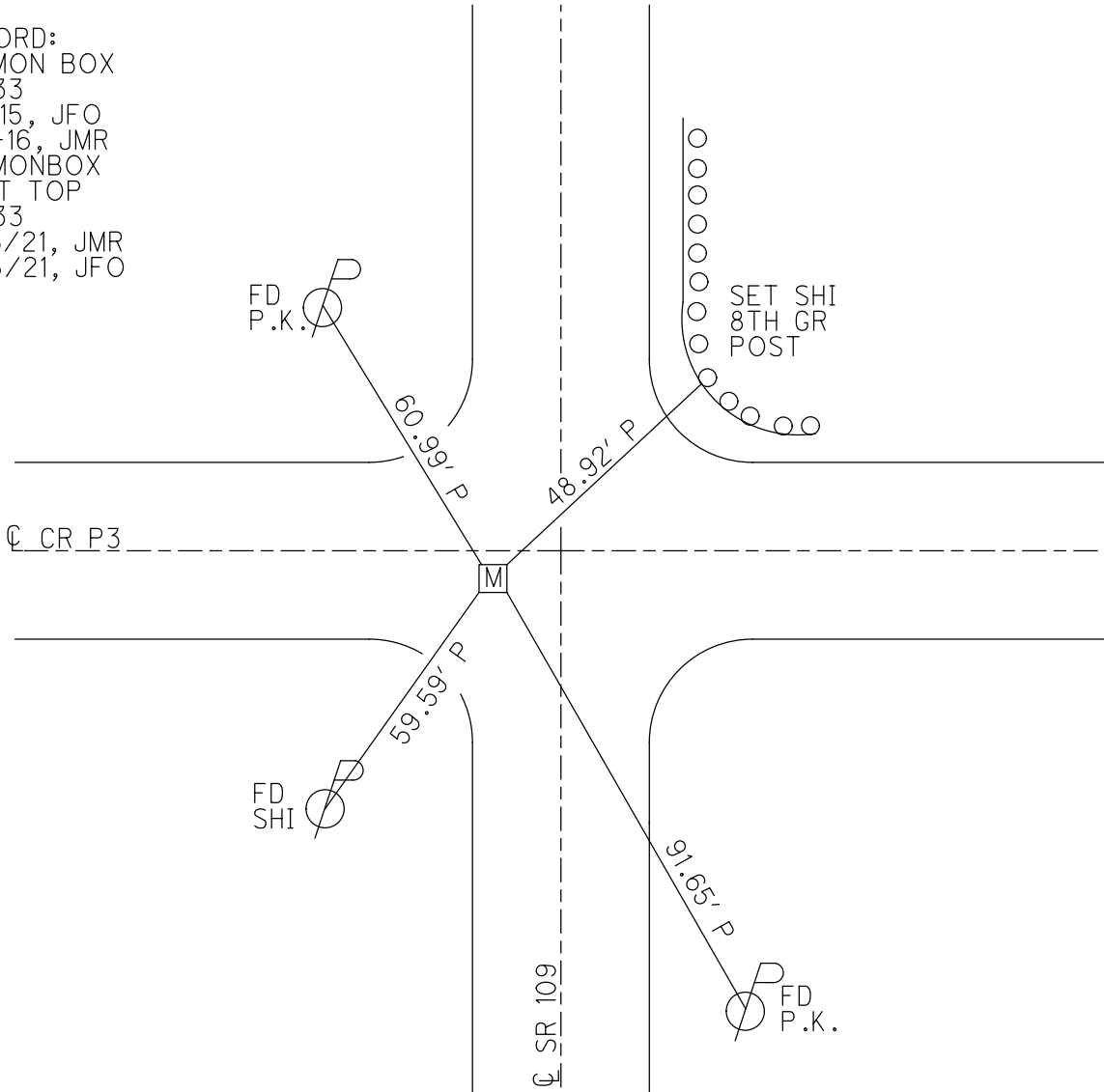
GEOID: NAVD88 2018

GRID: NORTHING: 632521.639

EASTING: 1546479.074



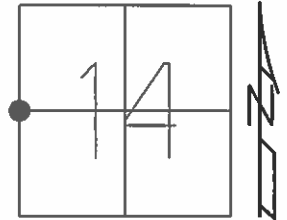
RECORD:
 FD MON BOX
 REF33
 9-1-15, JFO
 8-3-16, JMR
 FD MONBOX
 SHOT TOP
 REF33
 6/16/21, JMR
 10/5/21, JFO



O.D.O.T. DISTRICT 2 SURVEY OFFICE (USE ONLY)

PERSONNEL _____ REFERENCE NO. 33 SHEET 23 OF 38
 NOTES CORDES DATE 8-27-04 ROUTE SR 109
 H.C. BARNHISEL WEATHER OVERCAST COUNTY HENRY
 R.C. HOOKER TEMP. 80°F TOWNSHIP HARRISON
 SECTION 14
 T 5 N R 7 E

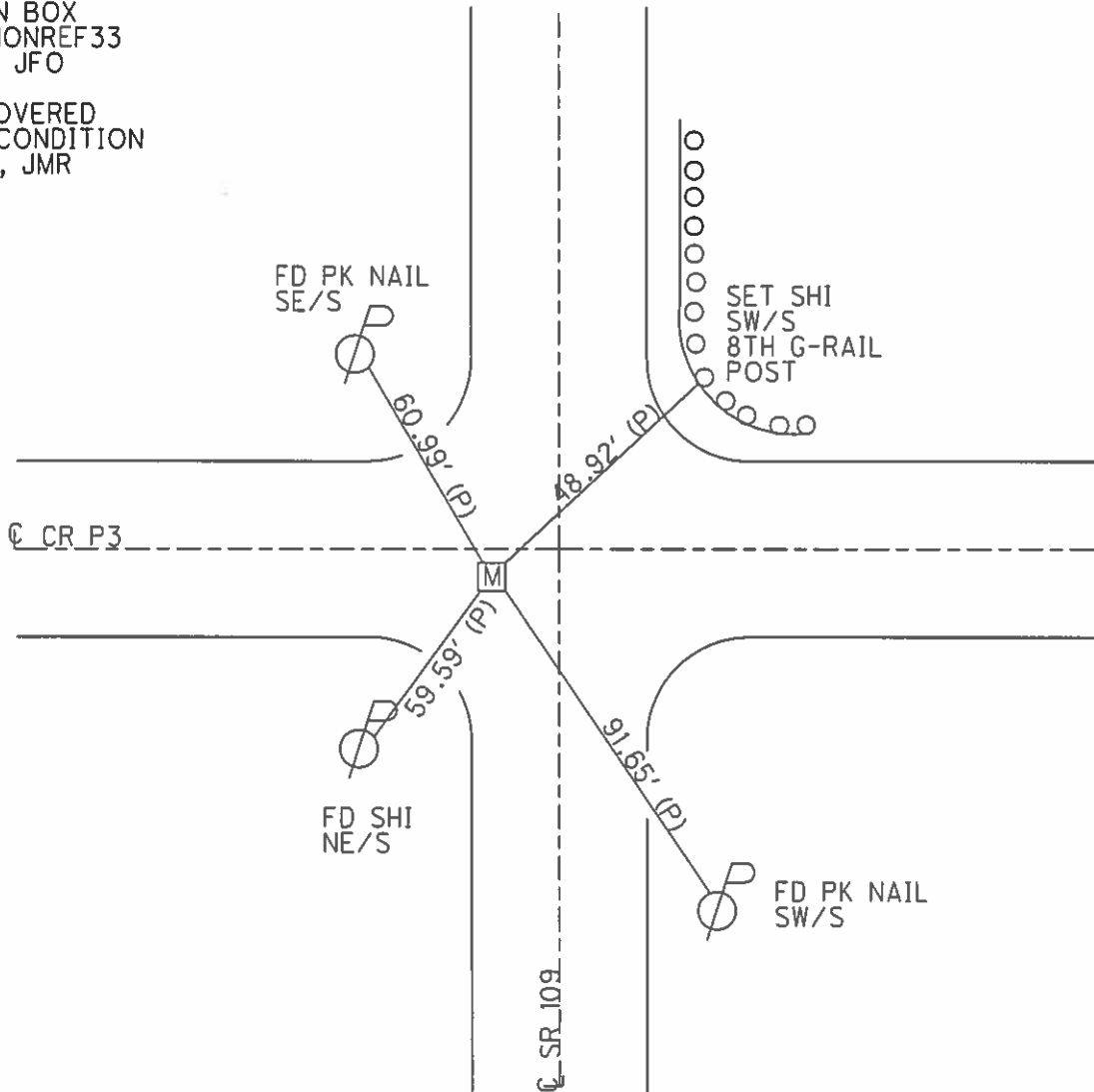
TYPE MONUMENT MON BOX W/ 1 PIN
 ON SURFACE - ~~BELOW~~ ON
 LEFT - ☉ PAV'T - ~~RIGHT~~ 8.0'
2.8' TO LT EDGE PAVEMENT
 S.L.M. 823+36



Grid: Northing: 632521.6532 Easting: 1546479.0929

RECORD:
 FD MON BOX
 GPS, MONREF33
 9-1-15, JFO

NOT COVERED
 POOR CONDITION
 8-3-16, JMR



O.D.O.T. DISTRICT 2 SURVEY OFFICE

PERSONNEL

REFERENCE NO. 33

SHEET 21 OF 23

NOTES CORDES

H.C. BARNHISEL

R.C. HOOVER

DATE 8-27-04

WEATHER OVERCAST

TEMP. + 80°

ROUTE 109

COUNTY HENRY

TOWNSHIP HARRISON

SECTION 14

T 5 N R 7 E

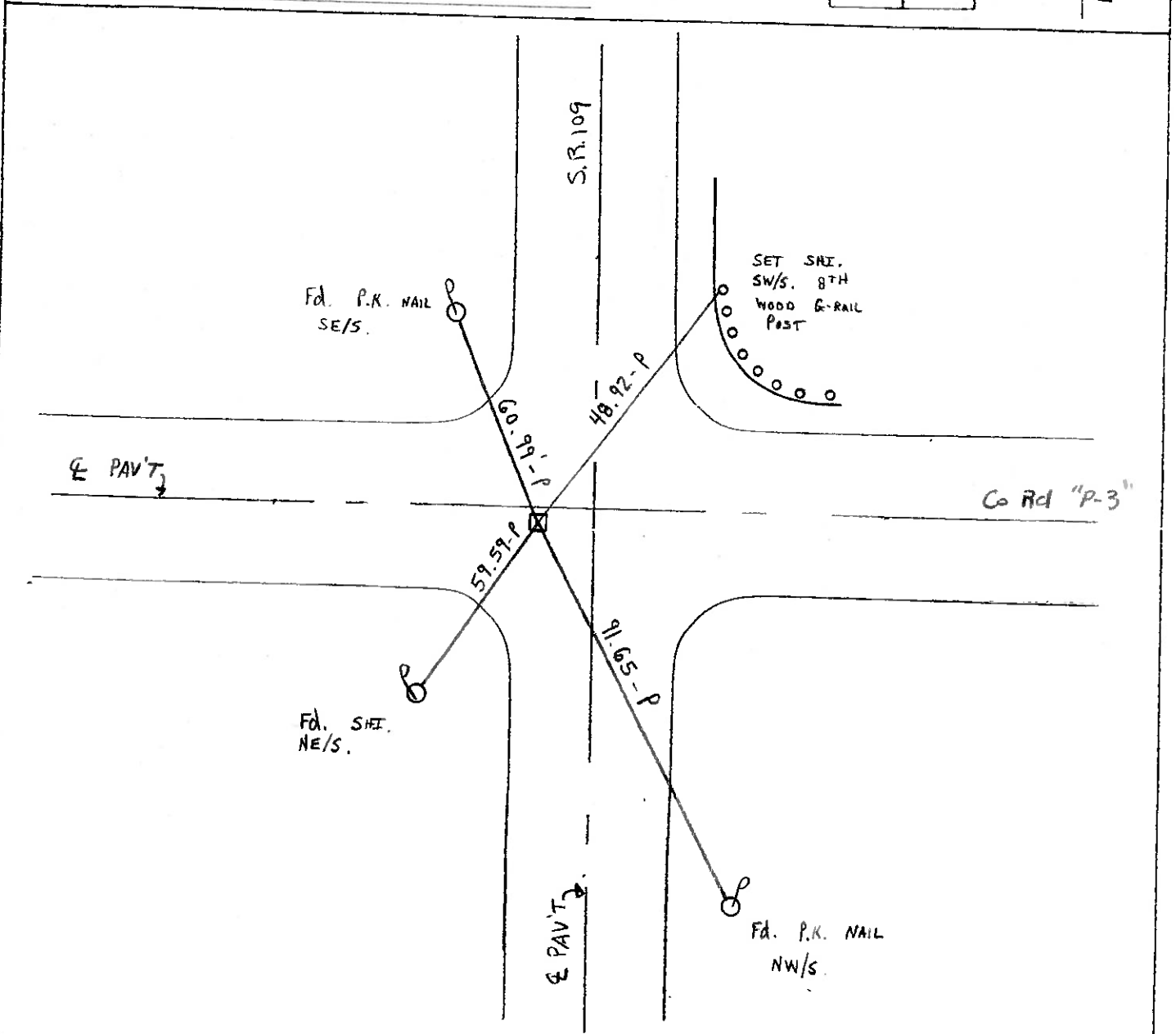
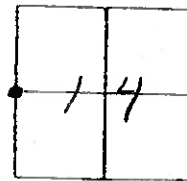
TYPE MONUMENT Mon Box / I PIN

ON SURFACE - BELOW SURFACE

LEFT - ☉ PAV'T. - RIGHT 8.0' LT 4

2.8 TO LT. EDGE PAVEMENT 1.5' S. OF CO. RD "P-3"

S.L.M. 823+36



O.D.O.T. DISTRICT 2 SURVEY OFFICE

PERSONNEL _____

REFERENCE NO. 33

SHEET _____ OF _____

NOTES BARNHISEL

H.C. " "

DATE 9-25-90

ROUTE 109

R.C. HOFFMAN

WEATHER clear - WINDY

COUNTY HENRI

TEMP. +70°

TOWNSHIP HARRISON

SECTION 14

T 5 N R 7 E

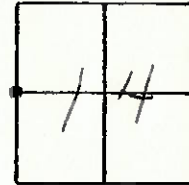
TYPE MONUMENT Mon. Box

ON SURFACE - BELOW yes

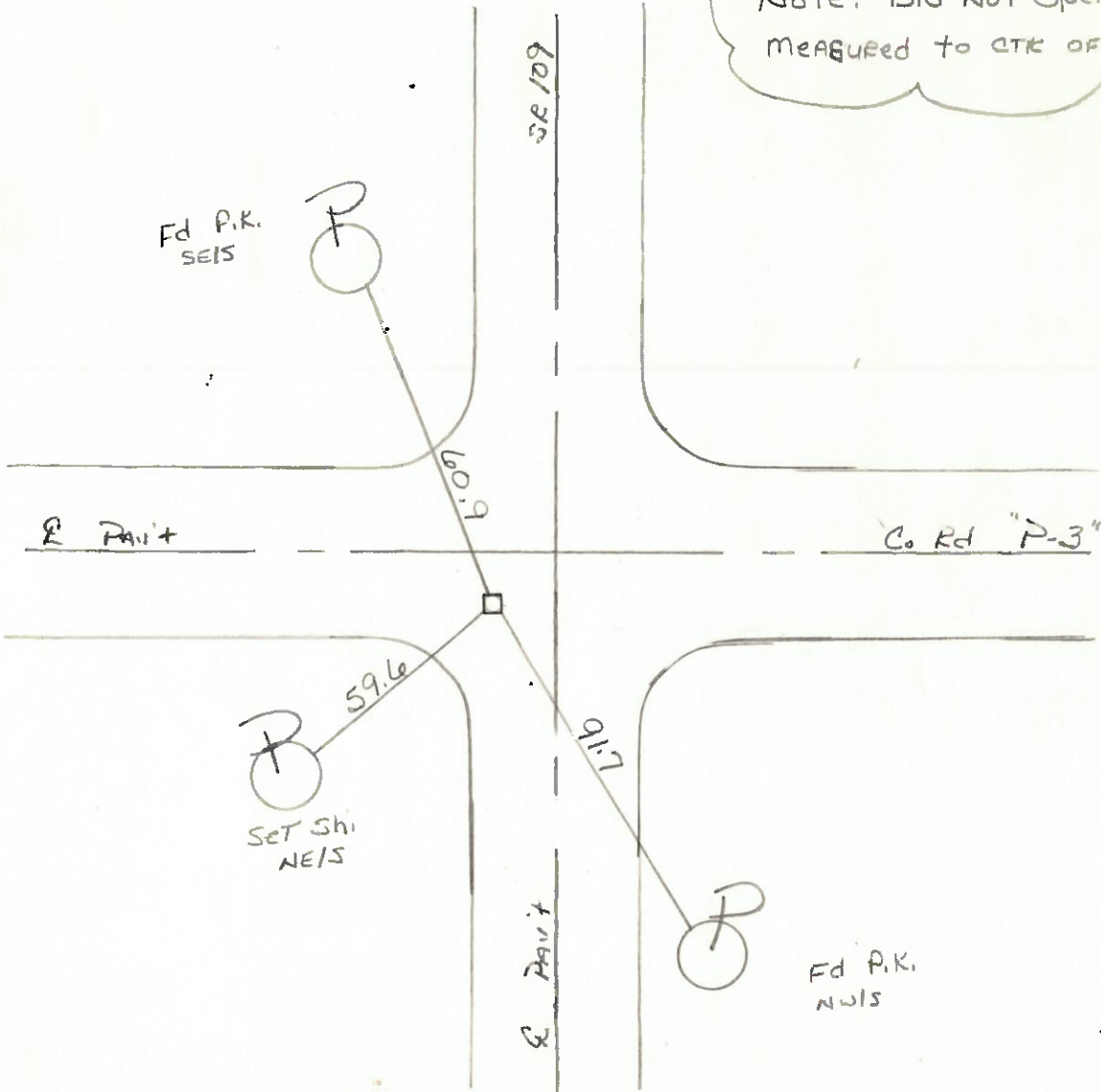
LEFT - ☉ PAV'T. - RIGHT 7.2

- TO - EDGE PAVEMENT 1.5 S. OF E Co. Rd "P-3"
(EAST)

S.L.M. 823+36



NOTE: Did not open Box, measured to center of lid.



QDOT. DISTRICT 2 SURVEY OFFICE

SHEET _____ OF _____

County HENRY S.R. 109

Date 3-19-84

Township HARRISON

Weather OVERCAST

Section 14

Temp. +30°

TSN, RTE

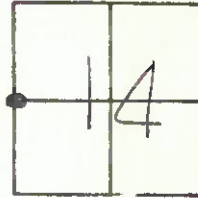
Personnel HOFFMAN

LOSHARKE

HOUSEHOLDER R.C.

BARNHISEL H.C.

33



Fd 1/2" pipe 1" below surface

S.L.M. = 823+43

set by R. Westhouse

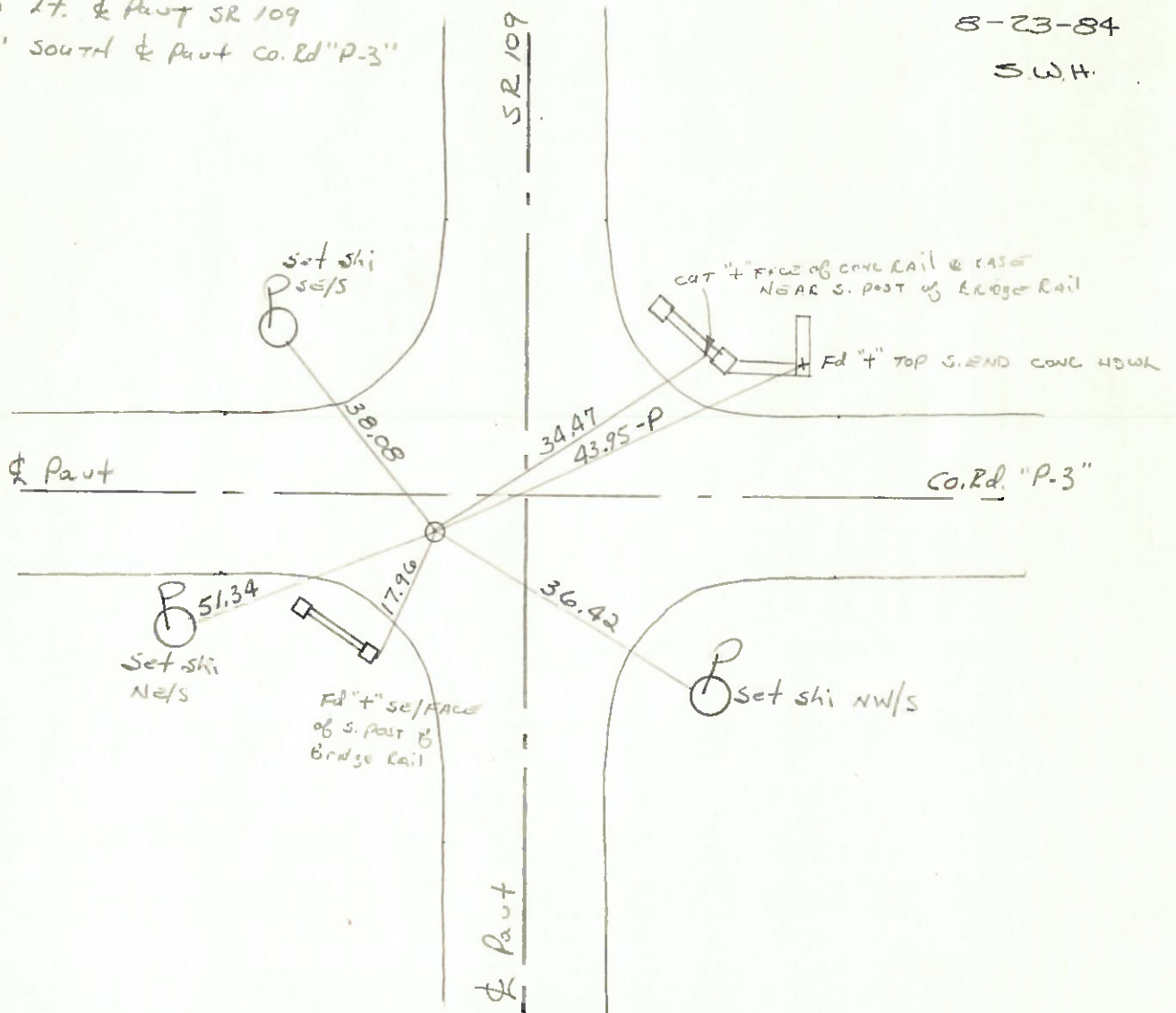
SET PK/WASHER

7.5' Lt. & Part SR 109

8-23-84

3.0' SOUTH & Part Co. Rd "P-3"

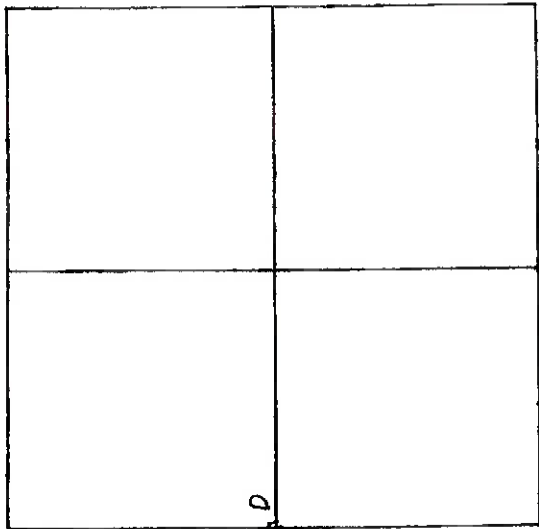
S.W.H.



SHEET # 7-B 33

14 HARRISON TOWNSHIP

Section 14 Town N. Range E.



Sept. 1973 Paul Westover
 Cor. established at Westover
 placed 12" x 3 1/2" Iron Pipe w/ PK on E. side Floor
 17.02 SW 4" x 4" Drill Hole on East end East Post
 Bridge Rail West side S.R. #10
 34.53 ENE to "X" & drill hole SW's southerly corner
 Bridge Rail East side S.R. #109
 38.66 SE to P.K. SW's E
 38.98 NW to P.K. NE's E
 51.61 SW to P.K. SW's E
 P.K's E'S & W

D