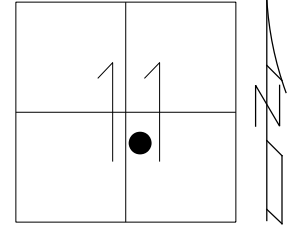


O.D.O.T. DISTRICT 2 SURVEY OFFICE (USE ONLY)

PERSONNEL \_\_\_\_\_ REFERENCE NO. 37 SHEET 32 OF 36  
 NOTES ASTON DATE 5/25/23 ROUTE SR 109  
 H.C. AUBLE WEATHER CLOUDY COUNTY HENRY  
 R.C. MILLER TEMP. 54° TOWNSHIP HARRISON  
 \_\_\_\_\_ SECTION 11  
 DWG BY RHOADES PID PAVETRAIN T 5 N R 7 E

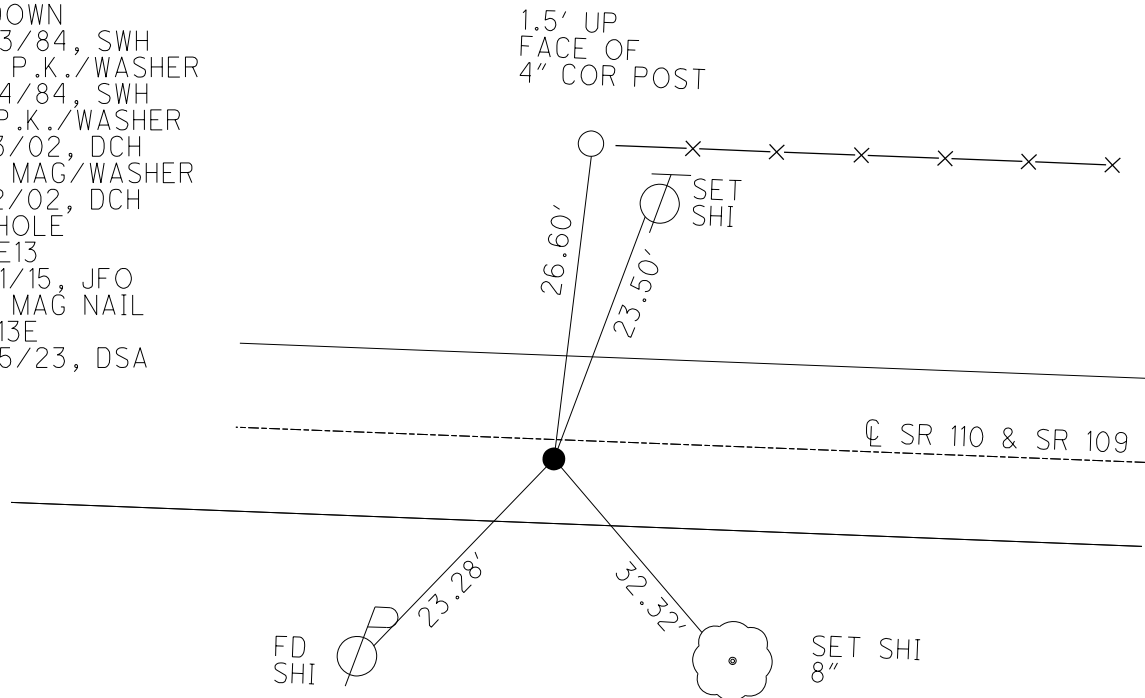
TYPE MONUMENT MAG NAIL  
 ON SURFACE - ~~BELOW~~ ON  
 OFFSET  $\odot$  PAVEMENT 1.7' ± : RT  
9' TO RT EDGE PAVEMENT  
 STATION: 914+09.80



HORZ. DATUM: NAD83 2011 GEOID: NAVD88 2018  
 GRID: NORTHING: 637429.609 EASTING: 1550572.496

NOTE: REF 13E SR 110

RECORD: P.I.  
 STA. 914+09  
 $\Delta = 5^\circ 45'$  LT  
 FD SM.R.R. SPIKE  
 2" DOWN  
 3/23/84, SWH  
 SET P.K./WASHER  
 8/24/84, SWH  
 FD P.K./WASHER  
 8/13/02, DCH  
 SET MAG/WASHER  
 12/2/02, DCH  
 FD HOLE  
 REF13  
 8/31/15, JFO  
 SET MAG NAIL  
 REF13E  
 5/25/23, DSA

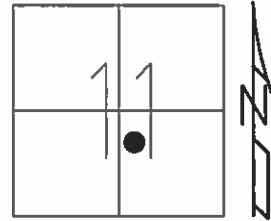


O.D.O.T. DISTRICT 2 SURVEY OFFICE (USE ONLY)

PERSONNEL \_\_\_\_\_ REFERENCE NO. 37 SHEET 33 OF 38

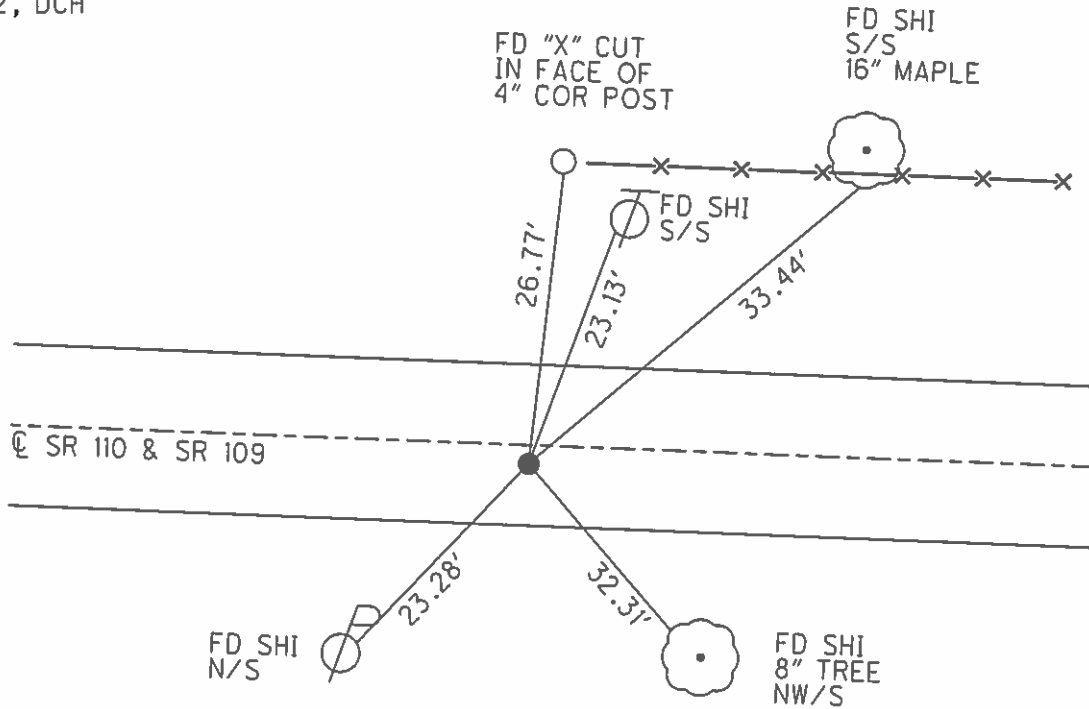
NOTES HOMAN DATE 8-13-02 ROUTE SR 109  
 H.C. ROUSOS WEATHER CLOUDY COUNTY HENRY  
 R.C. BEAUMONT TEMP. 80°F TOWNSHIP HARRISON  
 \_\_\_\_\_ SECTION 11  
 \_\_\_\_\_ T 5 N R 7 E

TYPE MONUMENT PK/WASHER  
 ON SURFACE - ~~BELOW~~ ON \_\_\_\_\_  
~~LEFT~~ - Q PAV'T - RIGHT 1.7'  
9' TO RT EDGE PAVEMENT  
 S.L.M. 913+94  
 Grid: Northing: - \_\_\_\_\_ Easting: - \_\_\_\_\_



RECORD: P.I.  
 $\Delta=5^{\circ}45'00''$ LT

SET MAG/WASHER  
 12-2-02, DCH



O.D.O.T. DISTRICT 2 SURVEY OFFICE

PERSONNEL

REFERENCE NO. 37

SHEET 5 OF 9

NOTES HOMAN

DATE 8-13-02

ROUTE S.R. 109

H.C. ROUSOS

WEATHER CLOUDY

COUNTY HENRY

R.C. BEAUMONT

TEMP. 80

TOWNSHIP HARRISON

SECTION 11

T 5 N R 7 E

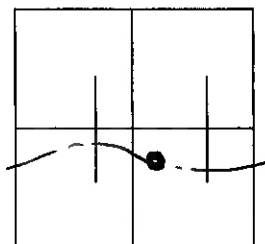
TYPE MONUMENT PK & WASHER

ON SURFACE - ~~BELOW~~ ON

LEFT - ~~C PAVT~~ - RIGHT 1.7'

9' TO RT EDGE PAVEMENT

S.L.M. 913+94



RECORD P.I.

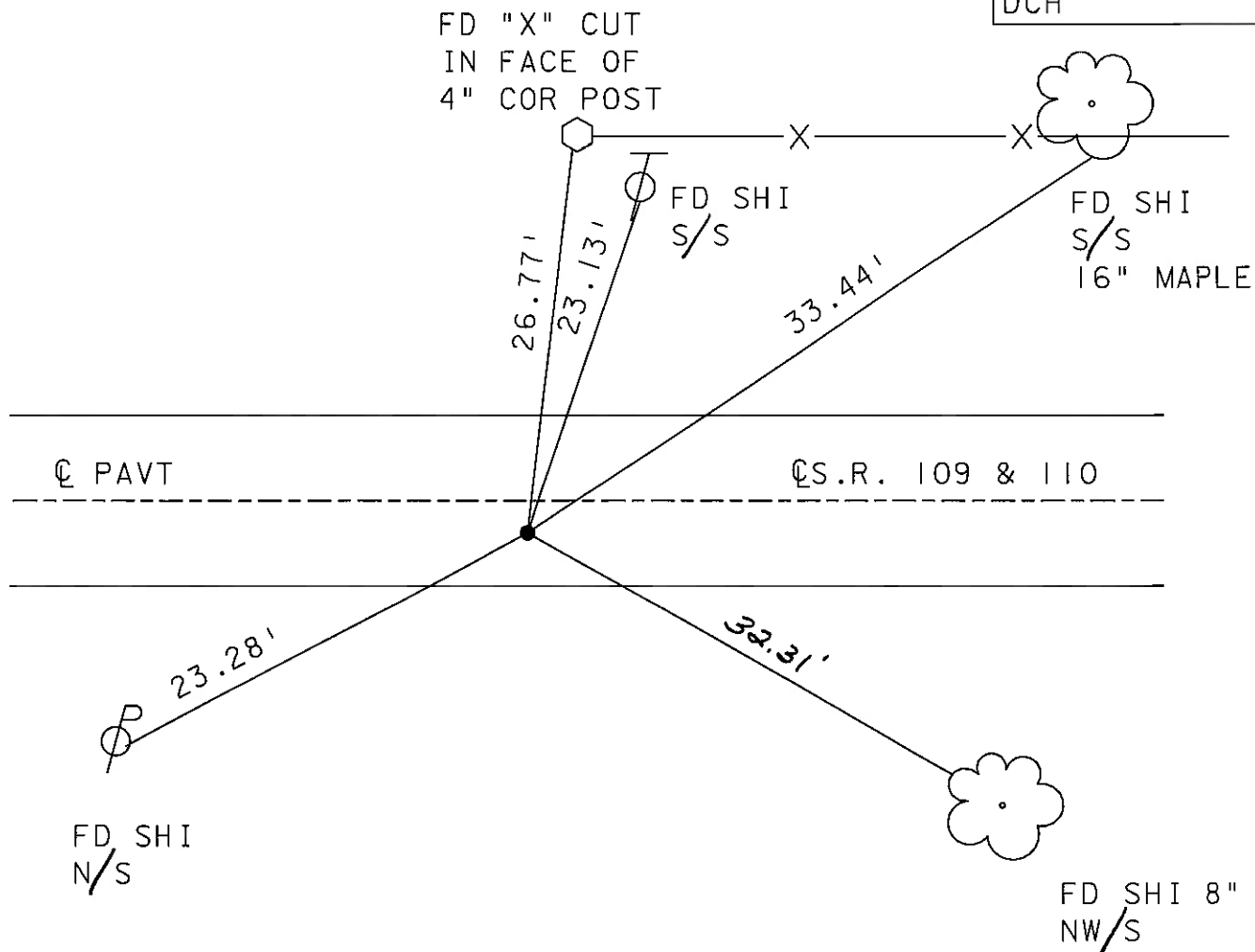
$\Delta = 5^{\circ} 45' 00''$  LT

SET MAG NAIL

& WASHER

12-02-02

DCH



# O.D.O.T. DISTRICT 2 SURVEY OFFICE

PERSONNEL \_\_\_\_\_

REFERENCE NO. \_\_\_\_\_

SHEET \_\_\_\_\_ OF \_\_\_\_\_

NOTES BAENHISEL

H.C. \_\_\_\_\_

DATE 9-28-90

ROUTE 109 1/2 110

R.C. HOFFMAN

WEATHER CLAC

COUNTY HENRY

TEMP. +65°

TOWNSHIP HARRISON

SECTION 11

T 5 N R 7 E

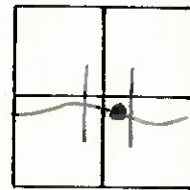
TYPE MONUMENT P.K. & WASHER

ON SURFACE - ~~BELOW~~ yes

~~LEFT - & PAV'T.~~ - RIGHT 1.7

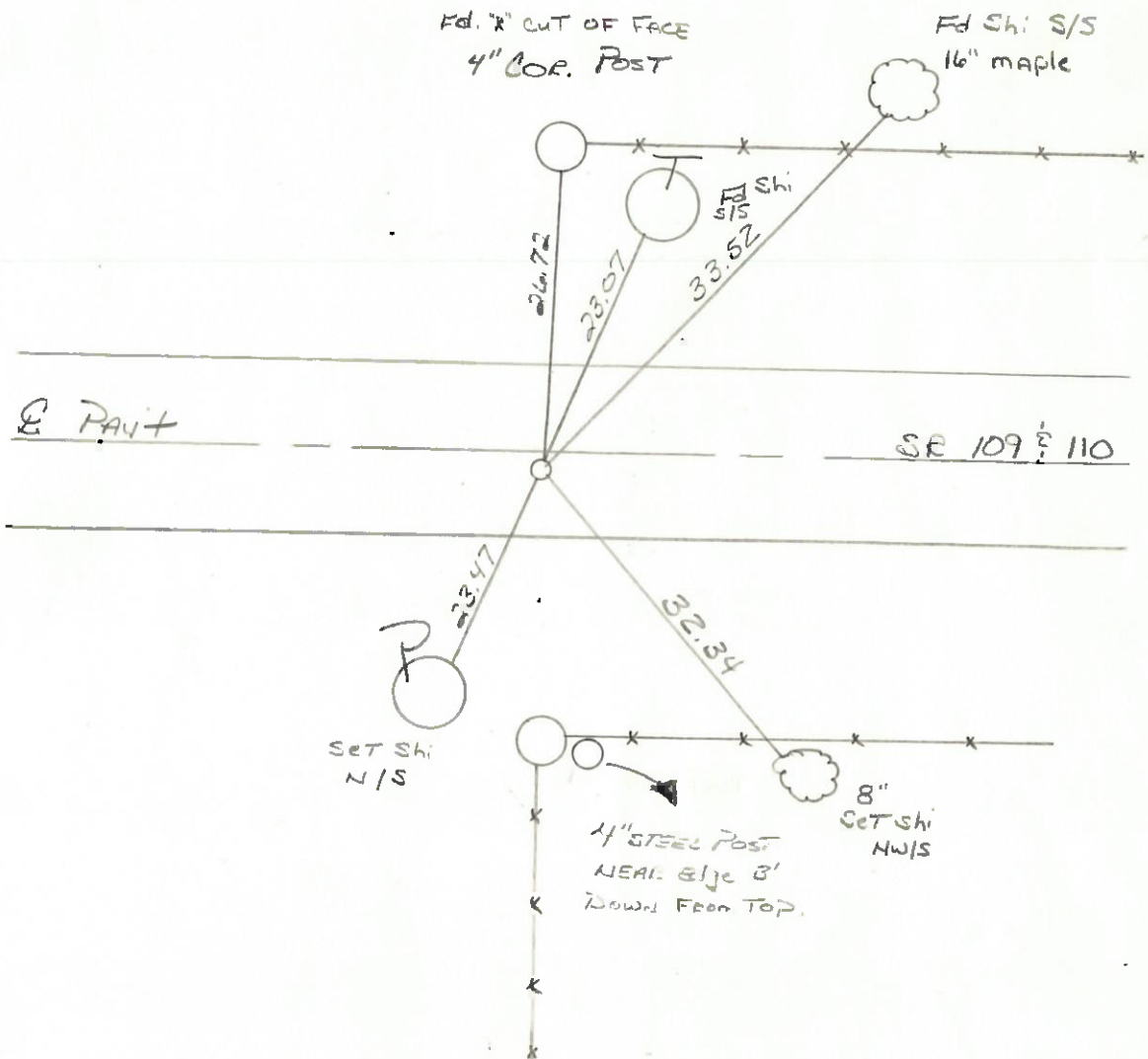
9.0 TO RT EDGE PAVEMENT

S.L.M. 9/3+94



RECORD: P.I.  
 $\Delta = 50-45' \text{ LT}$

SET P.K. & WASHER  
 10-11-90  
 MB



Q.D.O.T. DISTRICT 2 SURVEY OFFICE

SHEET \_\_\_\_\_ OF \_\_\_\_\_

County HENRY S.R. 109 & SR 110

Date 3-23-84

Township HARRISON

Weather Clear

Section 11

Temp. +25°

TSN, RZE

Personnel HOFFMAN

LOERKE

HOUSEHOLDER

BARWISSEL



Fed. small R.R. spike 2" below surface  
 1.7' RT. of ♀ Post  
 7.2' TO RT. EP.  
 11.1' TO LT. EP.

SLM 914+09

Record: P.I.  
 $\Delta = 5^\circ - 45' LT$

SET PK/WASHER  
 8-24-84  
 S.W.H.

