

O.D.O.T. DISTRICT 2 SURVEY OFFICE (USE ONLY)

PERSONNEL \_\_\_\_\_ REFERENCE NO. 38 SHEET 33 OF 36

NOTES ASTON DATE 5/25/23 ROUTE SR 109

H.C. AUBLE WEATHER CLOUDY COUNTY HENRY

R.C. MILLER TEMP. 55° TOWNSHIP HARRISON

SECTION 11

DWG BY RHOADES PID PAVTRAIN T 5 N R 7 E

TYPE MONUMENT MAG/WASHER

ON SURFACE - ~~BELOW~~ ON

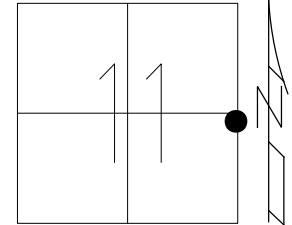
OFFSET  $\bar{C}$  PAVEMENT 4.9' LT : ~~RT~~

4.8' TO LT EDGE PAVEMENT

STATION: 927+22

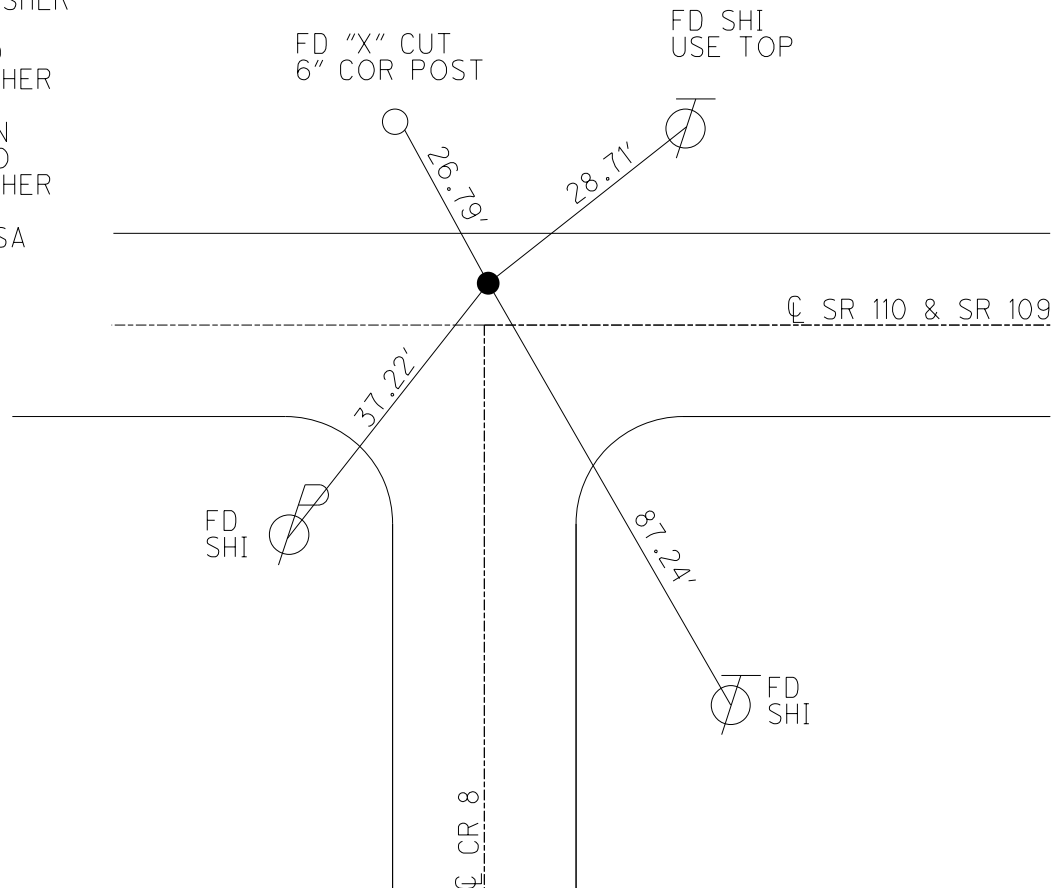
HORZ.DATUM: NAD83 2011 GEOID: NAVD88 2018

GRID: NORTHING: 637385.432 EASTING: 1551901.663



RECORD: P.I.  
 $\Delta = 0^\circ 50' 26''$  RT  
 SET P.K./WASHER  
 10-11-90, MB  
 SET MAG/WASHER  
 12-2-02, DCH  
 SET MAG/WASHER  
 REF14  
 8-31-15, JFO  
 FD MAG/WASHER  
 REF38  
 6/17/21, TDN  
 10/5/21, JFO  
 FD MAG/WASHER  
 REF14  
 12/20/21, DSA

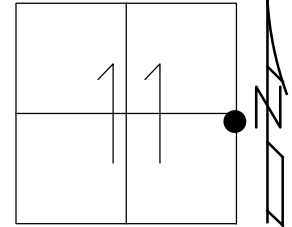
NOTE: REF 14 SR 110



O.D.O.T. DISTRICT 2 SURVEY OFFICE (USE ONLY)

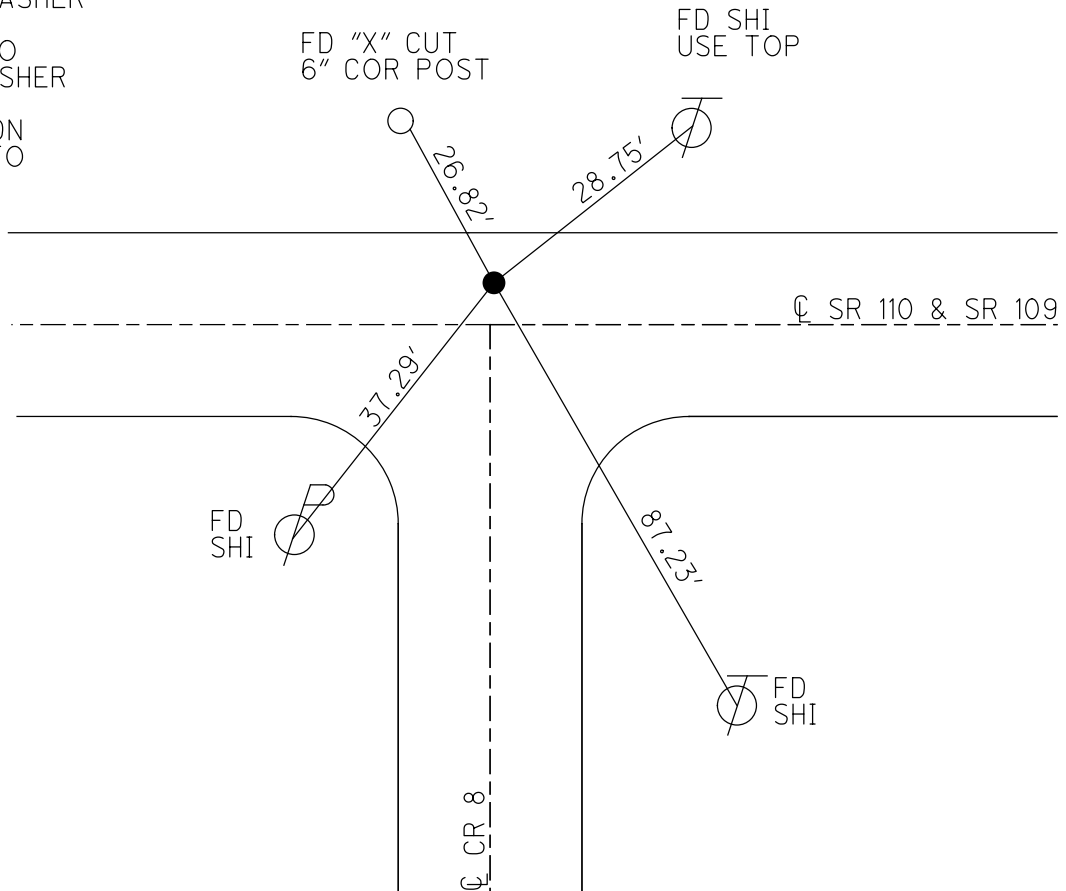
PERSONNEL \_\_\_\_\_ REFERENCE NO. 38 SHEET 34 OF 39  
 NOTES RHOADES DATE 9/3/15 ROUTE SR 109  
 H.C. O'DONNELL WEATHER FAIR COUNTY HENRY  
 R.C. RHOADES TEMP. 74° TOWNSHIP HARRISON  
 DWG BY RHOADES PID PAVTRAIN SECTION 11  
 T 5 N R 7 E

TYPE MONUMENT MAG/WASHER  
 ON SURFACE - ~~BELOW~~ ON \_\_\_\_\_  
 OFFSET  $\odot$  PAVEMENT 4.9' LT : ~~RT~~  
4.8' TO LT EDGE PAVEMENT  
 STATION: 927+22



HORIZ.DATUM: NAD83 2011 GEOID: NAVD88 2018  
 GRID: NORTHING: 637385.432 EASTING: 1551901.663

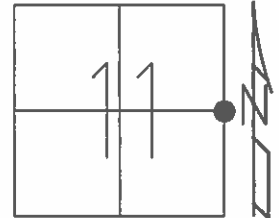
RECORD: P.I.  
 $\Delta = 0^\circ 50' 26''$  RT  
 SET P.K./WASHER  
 10-11-90, MB  
 SET MAG/WASHER  
 12-2-02, DCH  
 SET MAG/WASHER  
 REF14  
 8-31-15, JFO  
 FD MAG/WASHER  
 REF38  
 6/17/21, TDN  
 10/5/21, JFO



O.D.O.T. DISTRICT 2 SURVEY OFFICE (USE ONLY)

PERSONNEL \_\_\_\_\_ REFERENCE NO. 38 SHEET 34 OF 38  
 NOTES RHOADES DATE 9-3-15 ROUTE SR 109  
 H.C. O'DONNELL WEATHER FAIR COUNTY HENRY  
 R.C. RHOADES TEMP. 74°F TOWNSHIP HARRISON  
 SECTION 11  
 T 5 N R 7 E

TYPE MONUMENT MAG/WASHER  
 ON SURFACE - ~~BELOW~~ ON \_\_\_\_\_  
 LEFT - ☉ PAV'T - ~~RIGHT~~ 4.9'  
4.8' TO LT EDGE PAVEMENT  
 S.L.M. 927+22



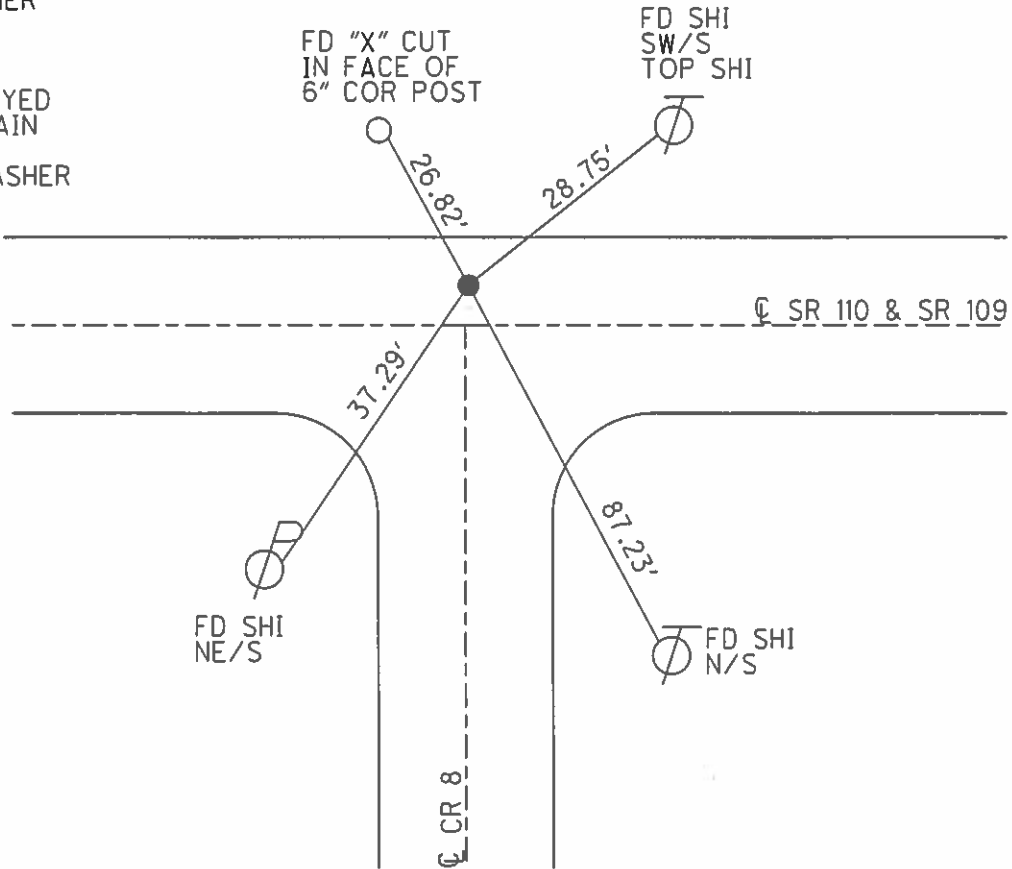
Grid: Northing: 637385.4426 Easting: 1551901.6379

RECORD: P.I.  
 $\Delta = 0^\circ 50' 26'' \text{RT}$

SET PK/WASHER  
 10-11-90, MB

SET MAG/WASHER  
 12-2-02, DCH

NOTE:  
 POINT DESTROYED  
 BY PAVING TRAIN  
 TIES CROSS  
 RESET MAG/WASHER  
 GPS, REF14  
 8-31-15, JFO



O.D.O.T. DISTRICT 2 SURVEY OFFICE

PERSONNEL

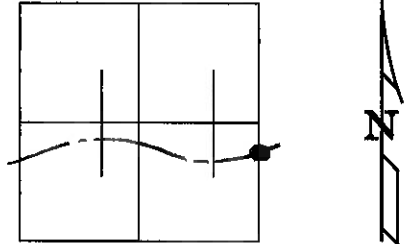
REFERENCE NO. <sup>14 ON SK 110</sup> 38 SHEET 6 OF 9

NOTES HOMAN  
 H.C. ROUSOS  
 R.C. BEAUMONT

DATE 8-13-02  
 WEATHER CLOUDY  
 TEMP. 80

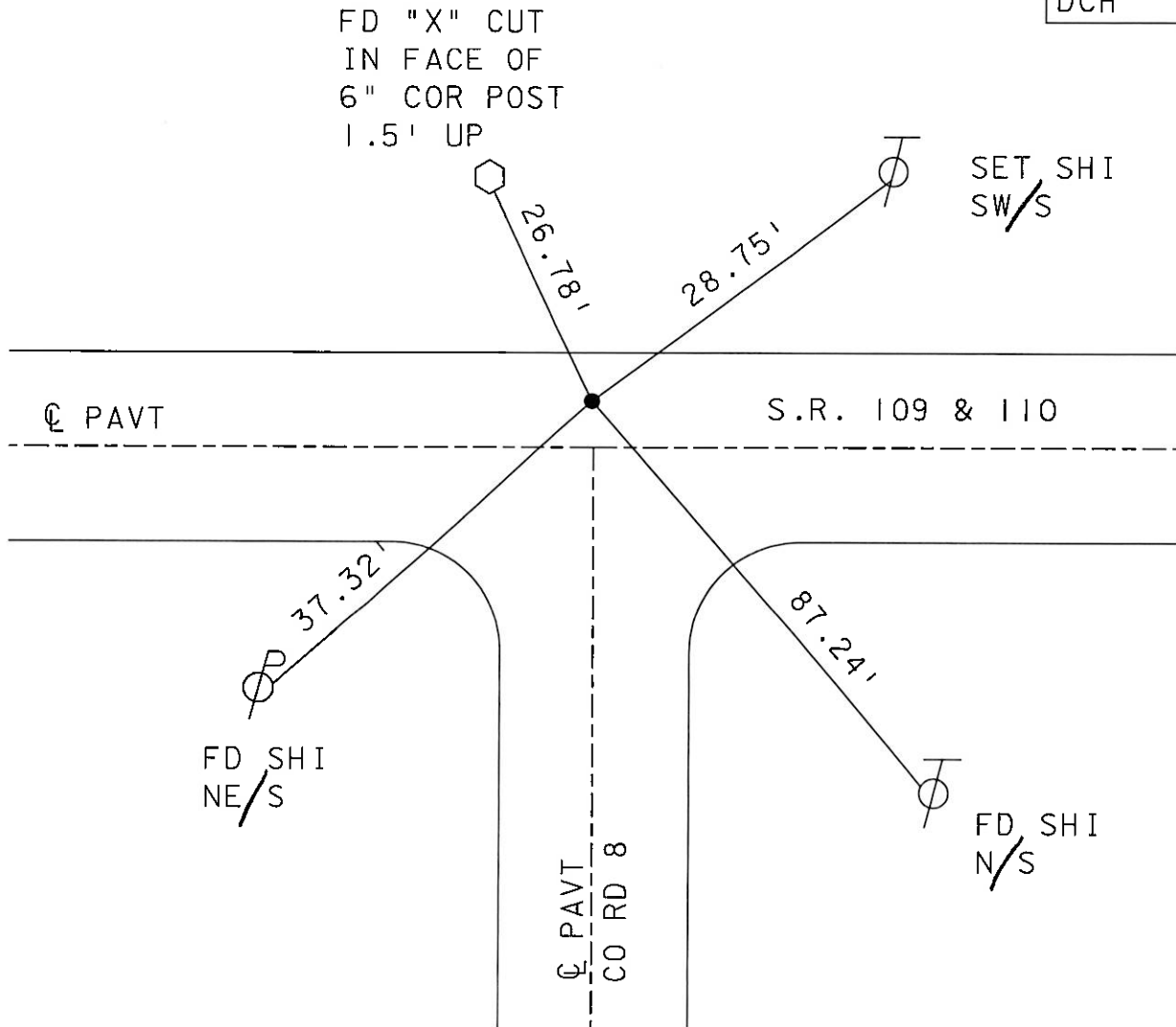
ROUTE S.R. 109  
 COUNTY HENRY  
 TOWNSHIP HARRISSON  
 SECTION 11  
T 5 N R 7 E

TYPE MONUMENT PK & WASHER  
 ON SURFACE - ~~BELOW~~ ON  
 LEFT - ~~Q PAVT~~ - ~~RIGHT~~ 4.9'  
5' TO LT EDGE PAVEMENT  
 S.L.M. 927+22



( $\Delta = 5^{\circ} 26' RT$ )  
 RECORD P.I. ?  
 $\Delta = 5^{\circ} 26' 00'' LT$

SET MAG NAIL  
 & WASHER  
 12-02-02  
 DCH



# O.D.O.T. DISTRICT 2 SURVEY OFFICE

PERSONNEL \_\_\_\_\_

REFERENCE NO. 14/SE 110

SHEET \_\_\_\_\_ OF \_\_\_\_\_

NOTES BARNHISEL

H.C. \_\_\_\_\_

DATE 9-28-90

ROUTE 109 & 110

R.G. HOFFMAN

WEATHER CLEAR

COUNTY HENRY

TEMP. +65°

TOWNSHIP HARRIS

SECTION 11

T. 5 N R. 7 E

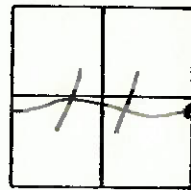
TYPE MONUMENT P.K. & WASHER

ON SURFACE - ~~BELOW~~ YES

LEFT- & PAV'T. - RIGHT 4.9

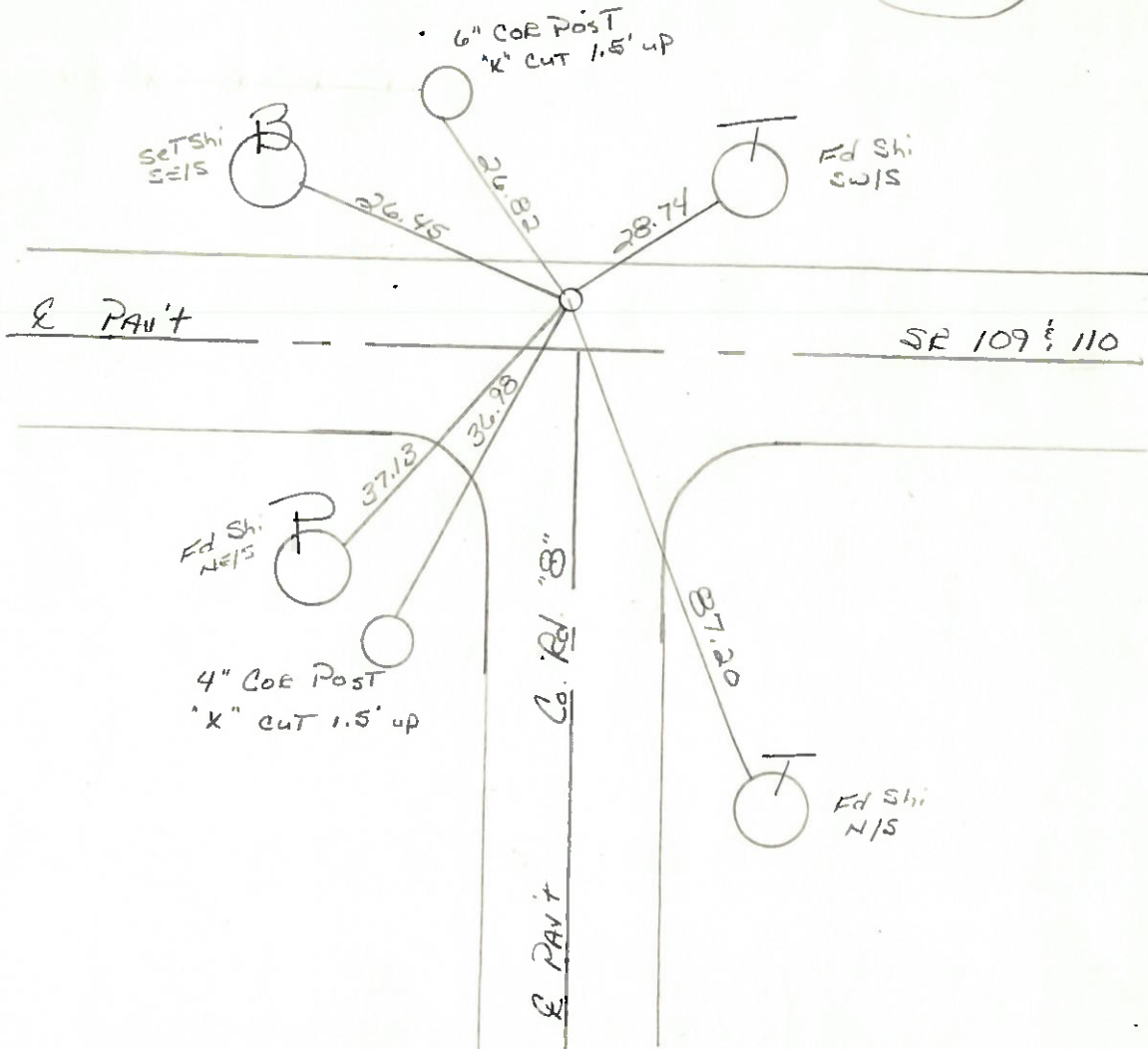
4.8 TO LT. EDGE PAVEMENT

S.L.M. 927+22



RECORD: P.I.  
Δ: 50°-26' Rt

Set P.K. & WASHER  
10-11-90  
MB



ODIOT. DISTRICT 2 SURVEY OFFICE

SHEET \_\_\_\_\_ OF \_\_\_\_\_

County HENRY S.R. 109<sup>5</sup> SR 110

Date 3-23-84

Township HARRISON

Weather clear

Section 11

Temp. +25°

TSN, RILE

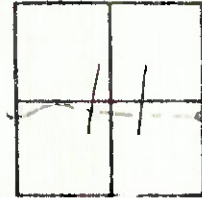
Personnel HOFFMAN

LOEHRKE

# 14 SR 110

HOUSEHOLDER

BARNHISEL



Fd R.R. SPK 1 1/2" below surface  
 4.4' Lt of & part SR 109-110  
 5.0' to Lt EP  
 on & part Co. Rd 8

S 211 927 +38

Record: P.I.  
 $\Delta = 5^\circ - 26' RT.$

SET PK/WASHER  
 8-24-84  
 SWH

