

O.D.O.T. DISTRICT 2 SURVEY OFFICE (USE ONLY)

PERSONNEL

REFERENCE NO. 38 B

SHEET 35 OF 36

NOTES ASTON

DATE 5/25/23

ROUTE SR 109

H.C. AUBLE

WEATHER CLOUDY

COUNTY HENRY

R.C. MILLER

TEMP. 55°

TOWNSHIP HARRISON

SECTION 12

DWG BY RHOADES

PID PAVTRAIN

T 5 N R 7 E

TYPE MONUMENT MAG SHANK

~~ON SURFACE~~ - BELOW 1 1/2"

OFFSET \odot PAVEMENT 0.9' LT : ~~RT~~

8.0' TO LT EDGE PAVEMENT

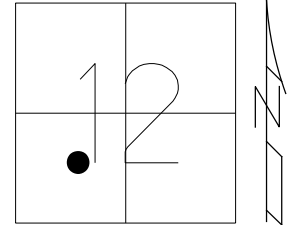
STATION: 944+81

HORIZ.DATUM: NAD83 2011

GEOID: NAVD88 2018

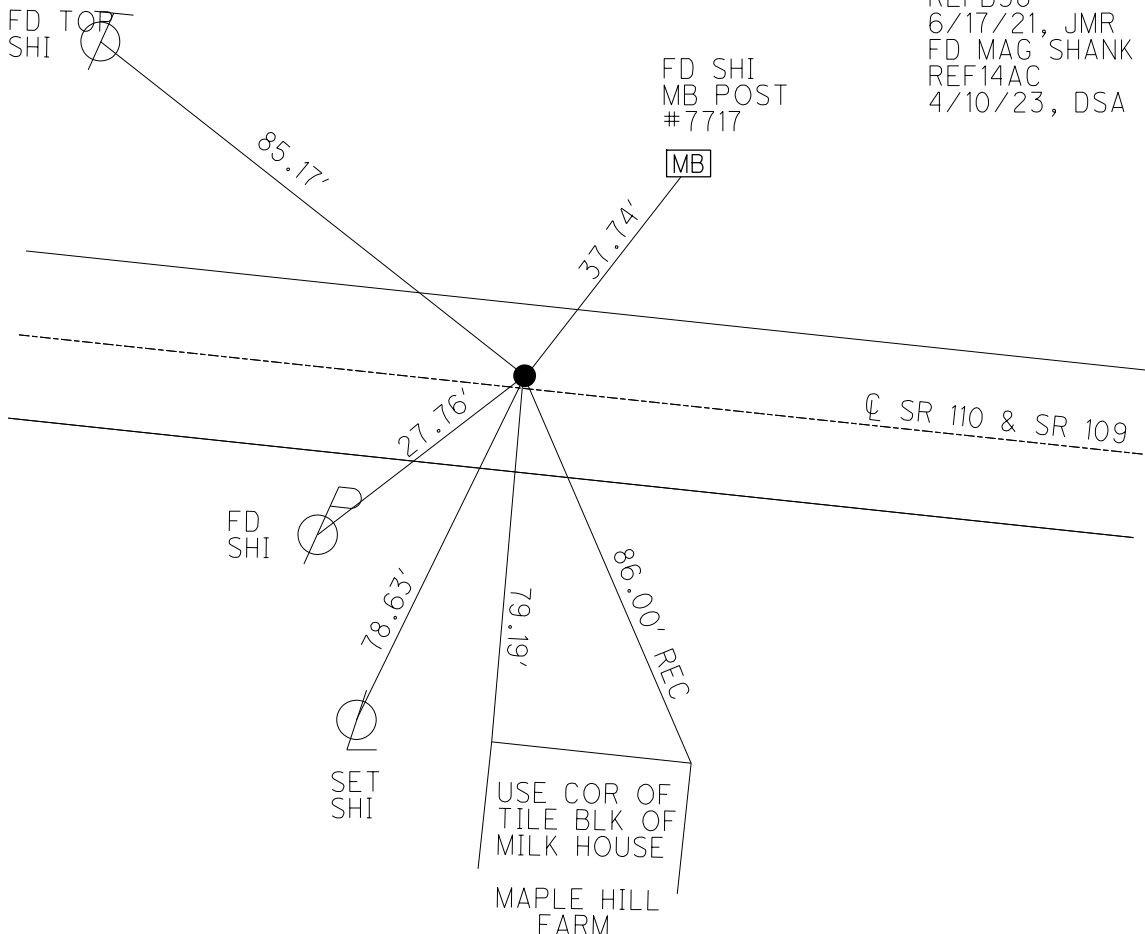
GRID: NORTHING: 637102.896

EASTING: 1553638.160



NOTE: REF 14 AC SR 110

RECORD: P.O.T.
 FD P.K./WASHER
 8/13/02, DCH
 SET MAG/WASHER
 11-29-02, DCH
 SHOT HOLE
 REFB38
 6/17/21, JMR
 FD MAG SHANK
 REF14AC
 4/10/23, DSA



O.D.O.T. DISTRICT 2 SURVEY OFFICE (USE ONLY)

PERSONNEL

REFERENCE NO. 38 B

SHEET 36 OF 38

NOTES HOMAN DATE 8/13/02

ROUTE SR 109

H.C. ROUSOS WEATHER CLOUDY

COUNTY HENRY

R.C. BEAUMONT TEMP. 80°

TOWNSHIP HARRISON

SECTION 12

DWG BY RHOADES PID PAVTRAIN

T 5 N R 7 E

TYPE MONUMENT P.K./WASHER

ON SURFACE - ~~BELOW~~ ON

OFFSET \odot PAVEMENT 0.9' LT : ~~RT~~

8.0' TO LT EDGE PAVEMENT

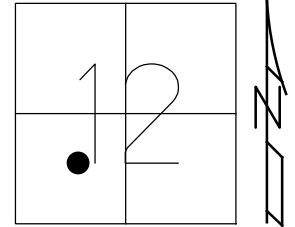
STATION: 944+81

HORZ.DATUM: NAD83 2011

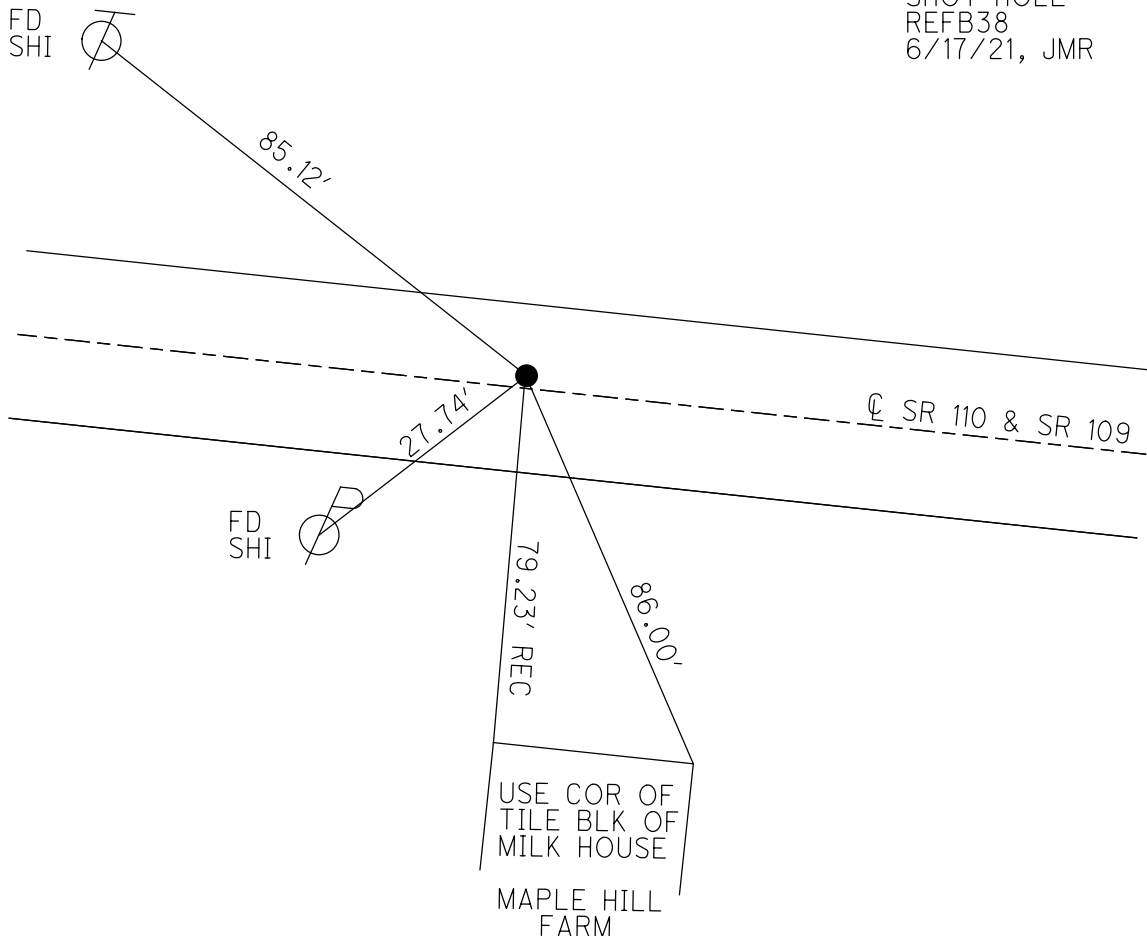
GEOID: NAVD88 2018

GRID: NORTHING: 637102.896

EASTING: 1553638.160



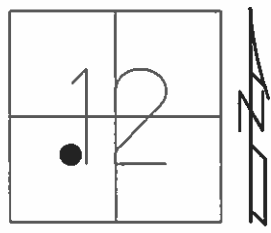
RECORD: P.O.T.
 FD P.K./WASHER
 8/13/02, DCH
 SET MAG/WASHER
 11-29-02, DCH
 SHOT HOLE
 REFB38
 6/17/21, JMR



O.D.O.T. DISTRICT 2 SURVEY OFFICE (USE ONLY)

PERSONNEL _____ REFERENCE NO. 38 B SHEET 36 OF 38
 NOTES HOMAN DATE 8-13-02 ROUTE SR 109
 H.C. ROUSOS WEATHER CLOUDY COUNTY HENRY
 R.C. BEAUMONT TEMP. 80°F TOWNSHIP HARRISON
 _____ SECTION 12
 _____ T 5 N R 7 E

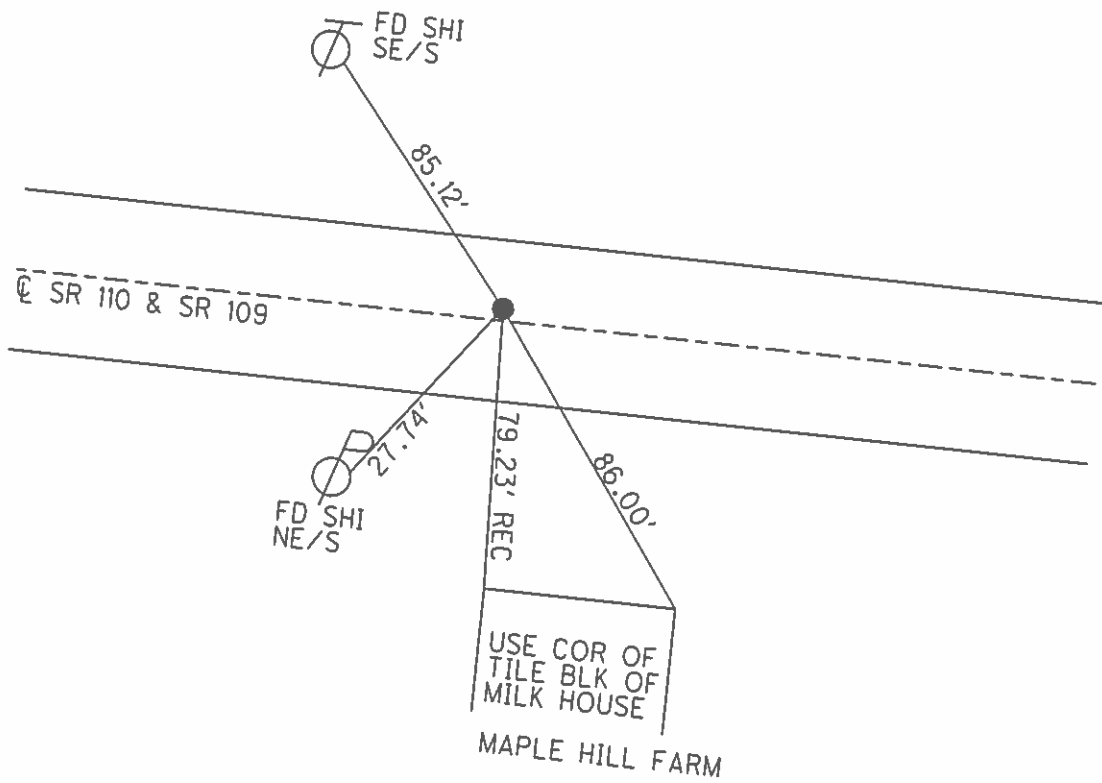
TYPE MONUMENT PK/WASHER
 ON SURFACE - ~~BELOW~~ ON _____
 LEFT - ☉ PAV'T - ~~RIGHT~~ 0.9'
8.0' TO LT EDGE PAVEMENT
 S.L.M. 944+81



Grid: Northing: - _____ Easting: - _____

RECORD: P.O.T.
 SET PK/WASHER

SET MAG/WASHER
 11-29-02, DCH



O.D.O.T. DISTRICT 2 SURVEY OFFICE

PERSONNEL

REFERENCE NO. 388

SHEET 8 OF 9

NOTES HOMAN

DATE 8-13-02

ROUTE S.R. 109

H.C. ROUSOS

WEATHER CLOUDY

COUNTY HENRY

R.C. BEAUMONT

TEMP. 80

TOWNSHIP HARRISON

SECTION 12

T 5 N R 7 E

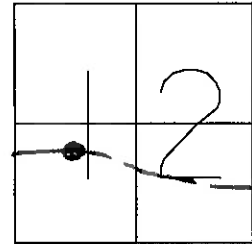
TYPE MONUMENT PK & WASHER

ON SURFACE - ~~BELOW~~ ON

LEFT - ~~Q PAVT~~ - ~~RIGHT~~ 0.9'

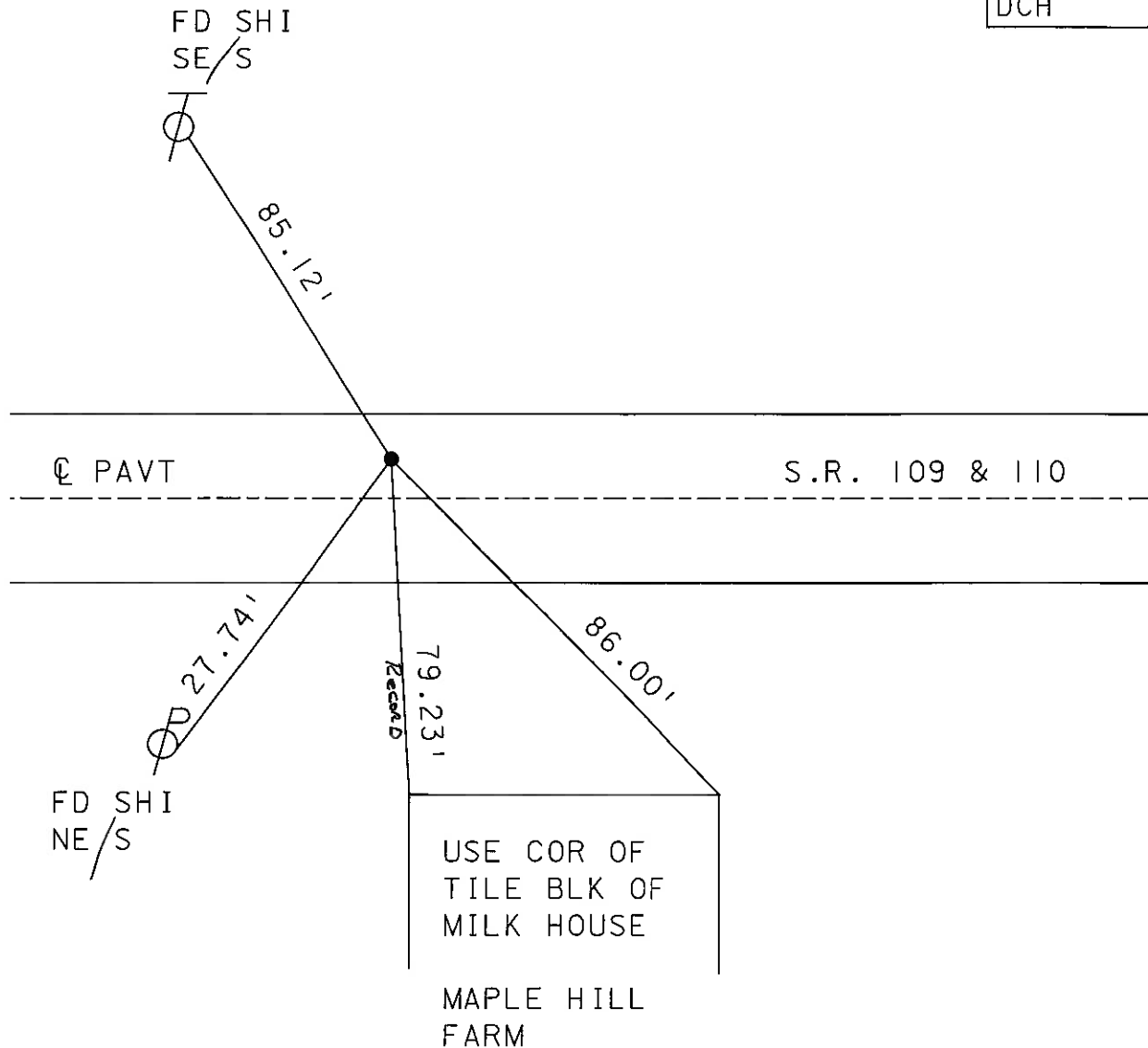
8' TO LT EDGE PAVEMENT

S.L.M. 944+81



RECORD: P.O.T.
Set PK nail

SET MAG NAIL
& WASHER
11-29-02
DCH



O.D.O.T. DISTRICT 2 SURVEY OFFICE

PERSONNEL _____

REFERENCE NO. _____

SHEET _____ OF _____

NOTES BARNHISEL

H.C. " "

R.C. HOFFMAN

DATE 9-28-90

WEATHER clear

TEMP. +65°

ROUTE 109 & 110

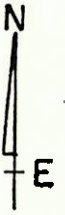
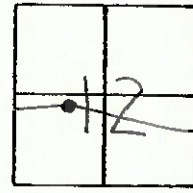
COUNTY HENRY

TOWNSHIP HARRISON

SECTION 12

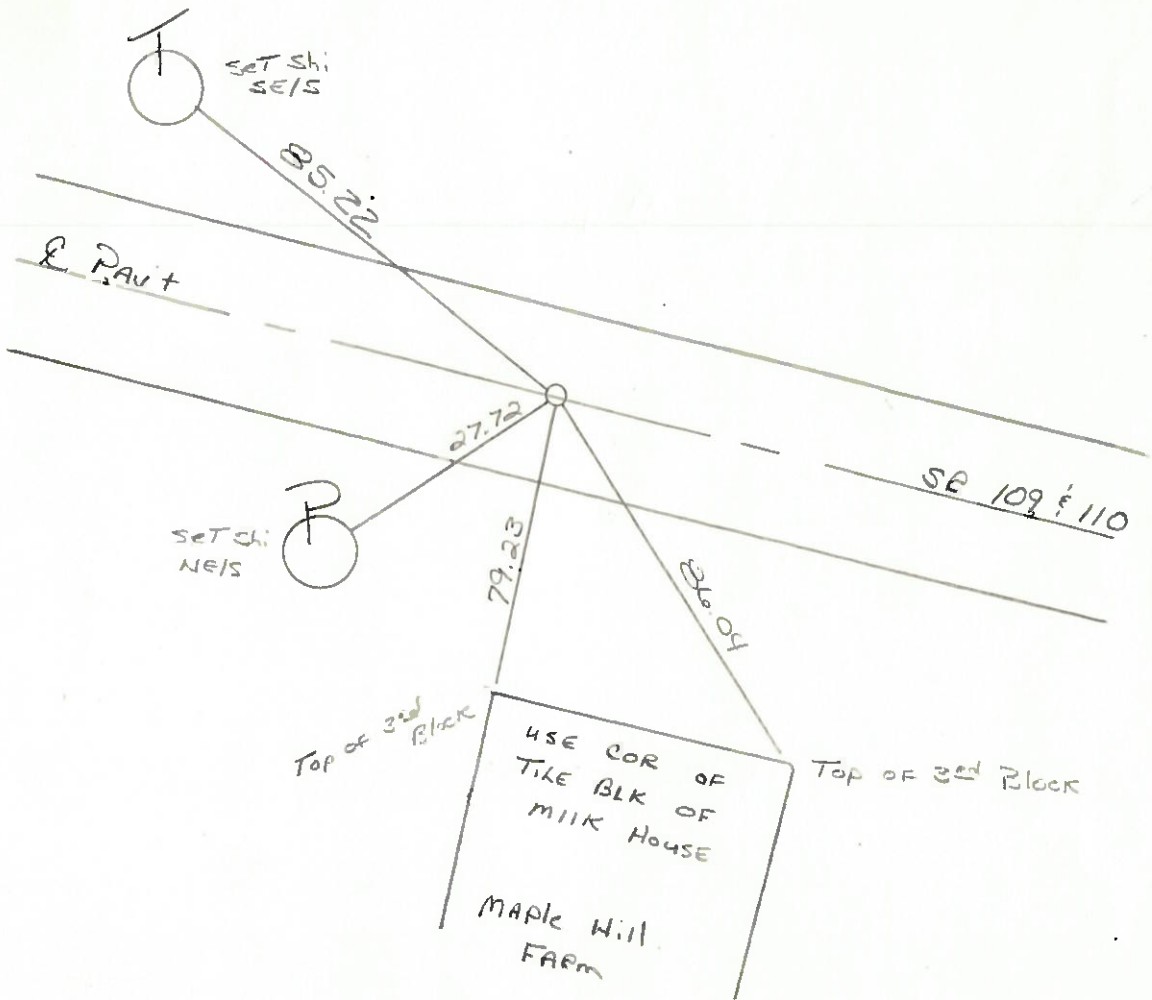
T 5 N R 7 E

TYPE MONUMENT PK & WASHER
 ON SURFACE - BELOW YES
 LEFT - & PAV'T. - RIGHT 0.9
8.7 TO LT EDGE PAVEMENT
 S.L.M. 944+81



Record: P.O.T.
Set P.K. NAIL

Set P.K. & Washer
10-11-90
mB



OD.O.T. DISTRICT 2 SURVEY OFFICE

SHEET _____ OF _____

County HENRY S.R. 109 & SR 110

Date 3-23-84

Township HARRISON

Weather Clear

Section 12

Temp. +25°

T5N, R2E

Personnel HOFFMAN



LEHRKE

Householder R.C.

BARNHSEL H.C.

Record: P.O.T.
Set P.K. Nail

DID NOT FIND POINT

SLM 944+99

SET PK/WASHER

8-24-84
SWH

1.0 Lt of & PAUT

11.0 Lt E.P.

13.0 Rt E.P.

