

O.D.O.T. DISTRICT 2 SURVEY OFFICE (USE ONLY)

PERSONNEL _____ REFERENCE NO. 38 C SHEET 36 OF 36

NOTES ASTON DATE 5/25/23 ROUTE SR 109

H.C. AUBLE WEATHER WINDY COUNTY HENRY

R.C. MILLER TEMP. 56° TOWNSHIP HARRISON

SECTION 12

DWG BY RHOADES PID PAVTRAIN T 5 N R 7 E

TYPE MONUMENT MAG/WASHER

ON SURFACE - ~~BELOW~~ ON

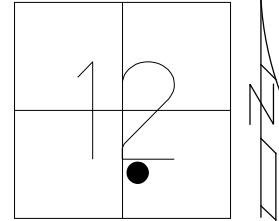
OFFSET \odot PAVEMENT ON LT : RT

8.6' TO RT EDGE PAVEMENT

STATION: 952+25

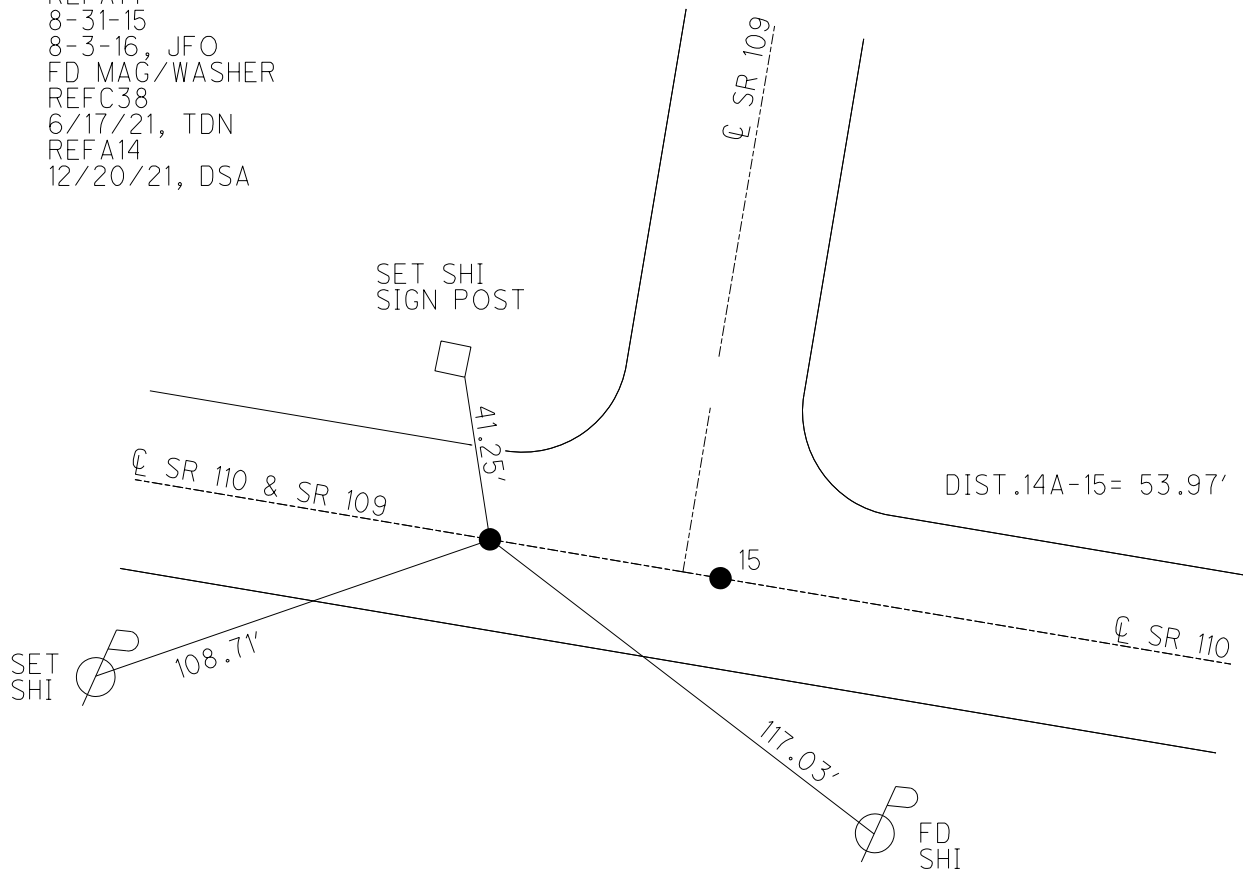
HORZ.DATUM: NAD83 2011 GEOID: NAVD88 2018

GRID: NORTHING: 636940.720 EASTING: 1554366.550



RECORD: P.I.
 $\Delta = 0^{\circ} 08' RT$
 STA. 359+87.00
 SET P.K./WASHER
 10-11-90, MB
 FD P.K./WASHER
 REFA14
 8-31-15
 8-3-16, JFO
 FD MAG/WASHER
 REFC38
 6/17/21, TDN
 REFA14
 12/20/21, DSA

NOTE: REF 14A SR 110



O.D.O.T. DISTRICT 2 SURVEY OFFICE (USE ONLY)

PERSONNEL

REFERENCE NO. 38 C

SHEET 37 OF 39

NOTES RHOADES

DATE 8/31/15

ROUTE SR 109

H.C. O'DONNELL

WEATHER FAIR

COUNTY HENRY

R.C. RHOADES

TEMP. 85°

TOWNSHIP HARRISON

DWG BY RHOADES PID PAVTRAIN

SECTION 12

T 5 N R 7 E

TYPE MONUMENT P.K./WASHER

ON SURFACE - ~~BELOW~~ ON

OFFSET Q PAVEMENT ON LT : RT

8.6' TO RT EDGE PAVEMENT

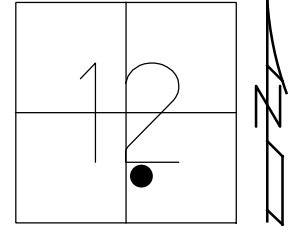
STATION: 952+25

HORZ. DATUM: NAD83 2011

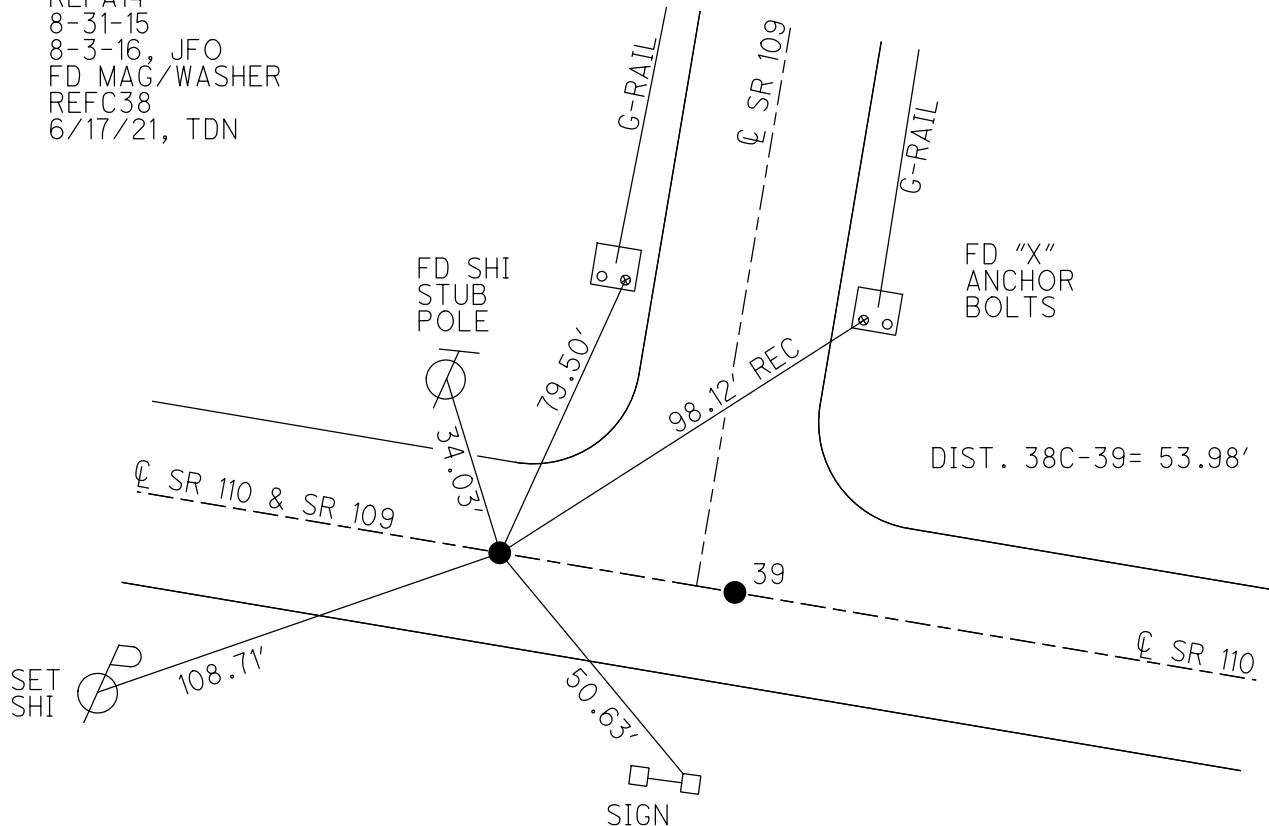
GEOID: NAVD88 2018

GRID: NORTHING: 636940.720

EASTING: 1554366.550



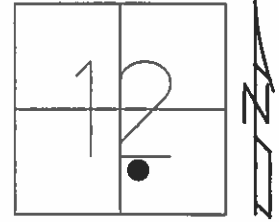
RECORD: P.I.
 $\Delta = 0^\circ 08' RT$
 STA. 359+87.00
 SET P.K./WASHER
 10-11-90, MB
 FD P.K./WASHER
 REFA14
 8-31-15
 8-3-16, JFO
 FD MAG/WASHER
 REFC38
 6/17/21, TDN



O.D.O.T. DISTRICT 2 SURVEY OFFICE (USE ONLY)

PERSONNEL _____ REFERENCE NO. 38 C SHEET 37 OF 38
 NOTES RHOADES DATE 8-31-15 ROUTE SR 109
 H.C. O'DONNELL WEATHER FAIR COUNTY HENRY
 R.C. RHOADES TEMP. 85°F TOWNSHIP HARRISON
 _____ SECTION 12
 _____ T 5 N R 7 E

TYPE MONUMENT PK/WASHER
 ON SURFACE - ~~BELOW~~ ON
 LEFT - Q PAV'T - RIGHT ON
8.6' TO RT EDGE PAVEMENT
 S.L.M. 952+25
 Grid: Northing: 636940.7321 Easting: 1554366.5447



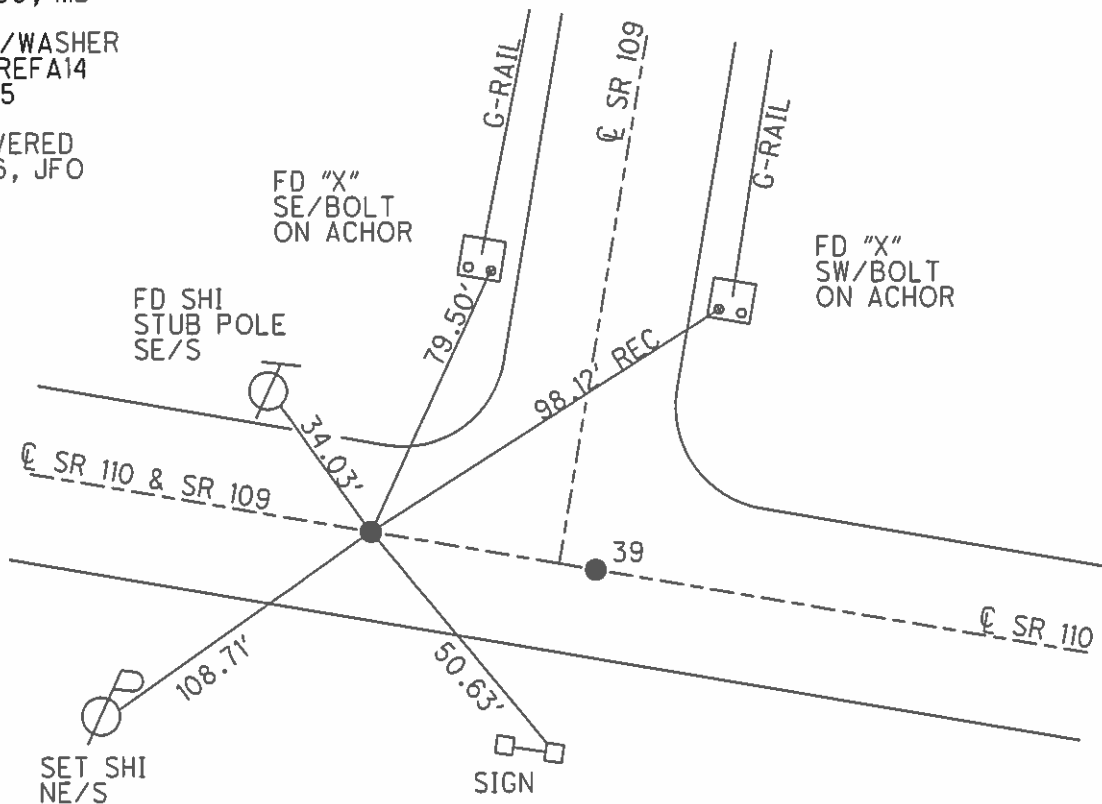
RECORD: P.I.
 $\Delta=0^{\circ}08'RT$
 STA. 359+87.00

DIST. 38C-39= 53.98'

SET PK/WASHER
 10-11-90, MB

FD PK/WASHER
 GPS, REFA14
 8-31-15

UNCOVERED
 8-3-16, JFO



O.D.O.T. DISTRICT 2 SURVEY OFFICE

PERSONNEL

REFERENCE NO. ^{#15 SR10} ~~#39 SR109~~

SHEET 9 OF 9

NOTES HOMAN

DATE 8-13-02

ROUTE S.R. 109

H.C. ROUSOS

WEATHER CLOUDY

COUNTY HENRY

R.C. BEAUMONT

TEMP. 85

TOWNSHIP HARRISON

SECTION 12

T 5 N R 7 E

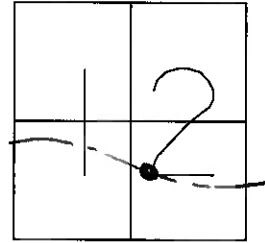
TYPE MONUMENT PK & WASHER

ON SURFACE - BELOW ON

LEFT - Q PAV'T - RIGHT ON

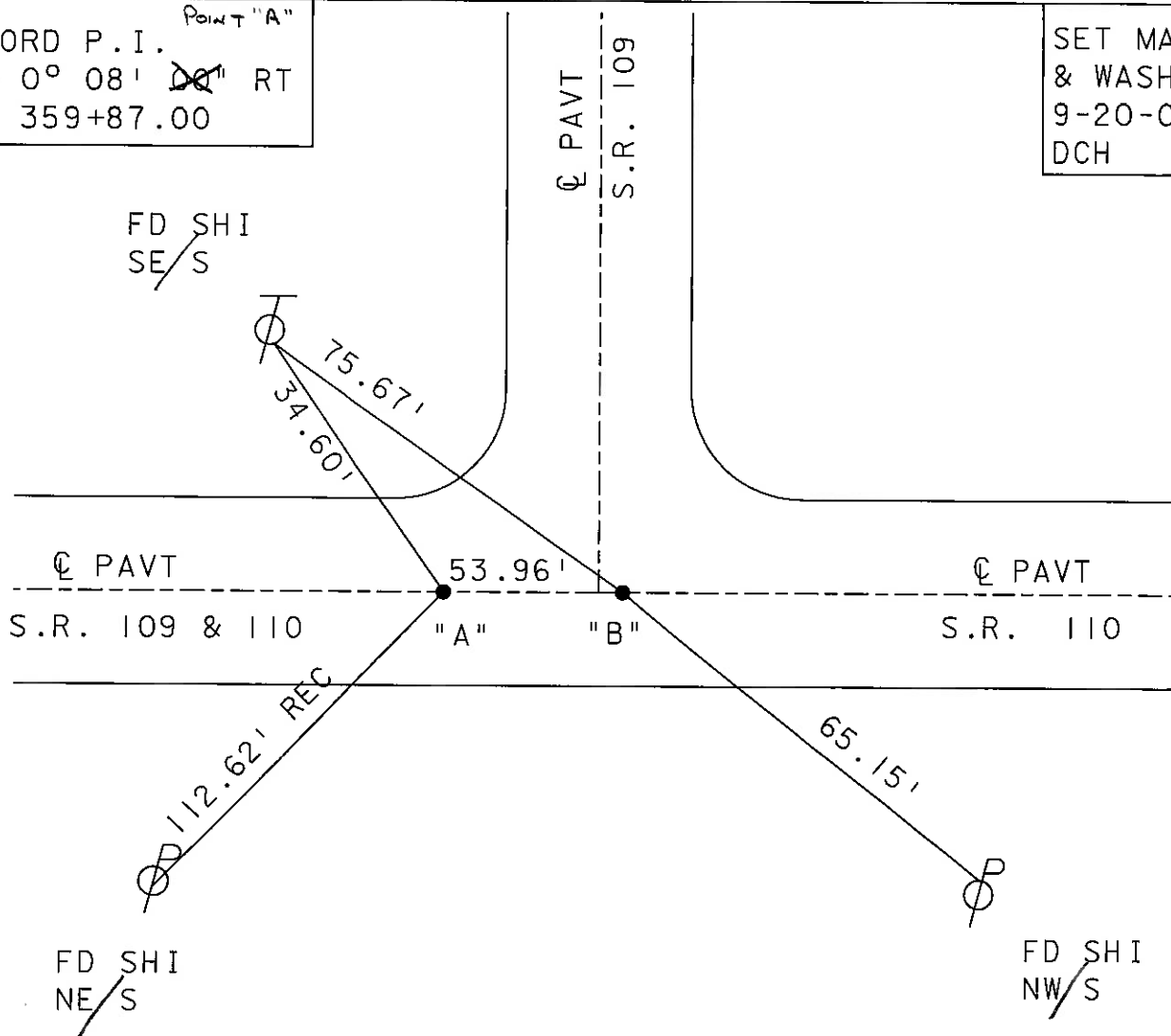
9' TO RT EDGE PAVEMENT

S.L.M. 952+25@PT A



RECORD P.I. ^{Point "A"}
 $\Delta = 0^\circ 08' 00''$ RT
 STA 359+87.00

SET MAG NAIL
 & WASHER
 9-20-02
 DCH



O.D.O.T. DISTRICT 2 SURVEY OFFICE

15 SE 110

PERSONNEL _____

REFERENCE NO. # 39 SR 109 SHEET _____ OF _____

NOTES BARNHISEL

H.C. _____

DATE 9-28-90

ROUTE 109 & 110

R.G. HOFFMAN

WEATHER Clear

COUNTY HENRY

TEMP. +65°

TOWNSHIP HARRISON

SECTION 12

T. 5 N. R 7 E

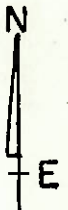
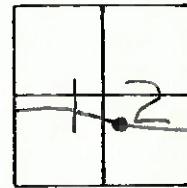
TYPE MONUMENT PK NAILS & Washers

ON SURFACE - BELOW YES YES

LEFT - C PAV'T. - RIGHT YES YES

TO RT EDGE PAVEMENT

S.L.M. "A" 952+25 "B" 952+79

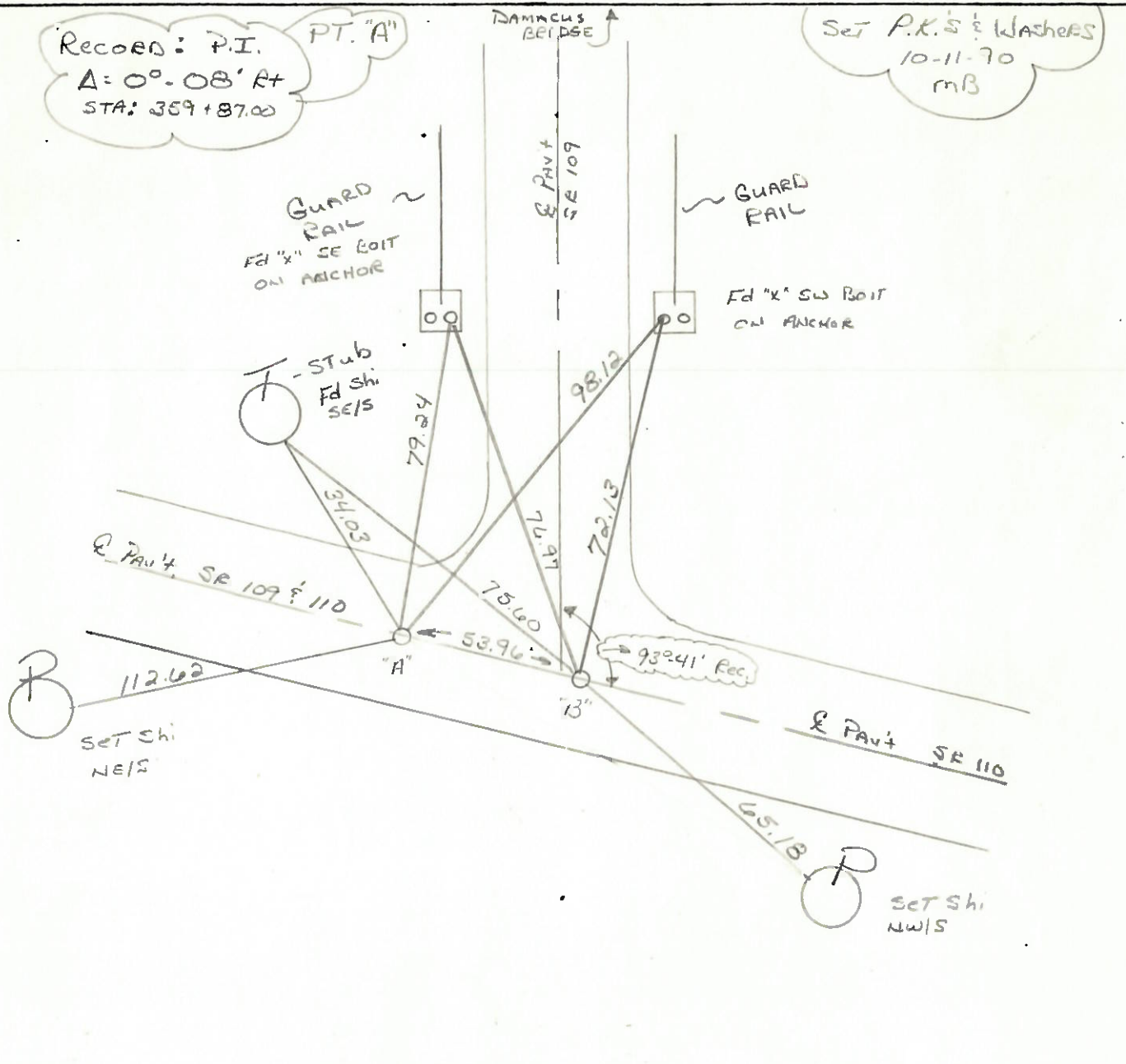


RECORD: P.I.
 $\Delta = 0^\circ - 08' \text{ Rt}$
 STA: 359+87.00

PT. "A"

DAMASCUS BRIDGE

Set P.K.'s & Washers
 10-11-70
 MB



ODDOT DISTRICT 2 SURVEY OFFICE

SHEET _____ OF _____

County HENRY S.R. 109 & SR 110

Date 3-23-84

Township HARRISON

Weather clear

Section 12

Temp. +25°

TSN, RZE

Personnel HOFFMAN



#15 SR 110

LOENRICE

#39 SR 109

HOUSEHOLDER

BARANISH

PT. "A" Fd small R.R. spike 2" below surface
ON E SR 109 & SR 110 POINT
11.0' TO RT EP
15.5' TO LT EP

SLM 952+42

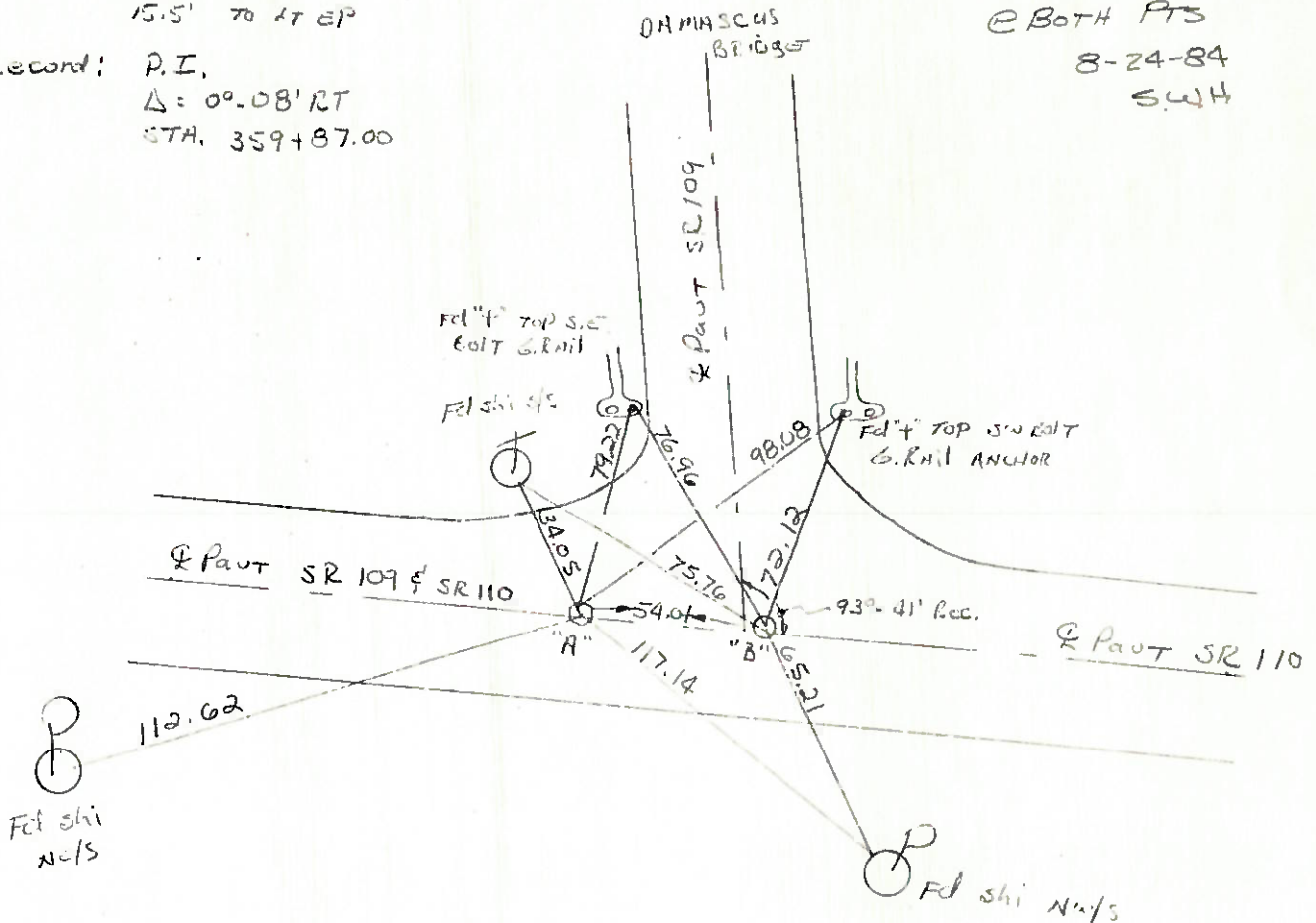
SET PK/WASHER

@ BOTH PTS

8-24-84

SWH

Record: P.I.
Δ = 00° 08' RT
STA. 359+87.00



PT. "B" Fd P.K. NAIL ON SURFACE
of survey SR 110 & 04
of CONST SR 109 NORTH
STA. 360+41.01 SR 110 =
STA. 954+22.50 SR 109

SLM = 952+96

ON the POINT SR 110 EAST

1.0' E. of Point SR 109 NORTH