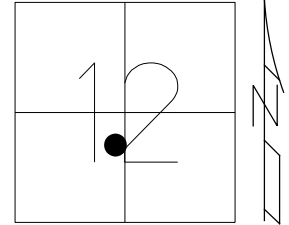


O.D.O.T. DISTRICT 2 SURVEY OFFICE (USE ONLY)

PERSONNEL \_\_\_\_\_ REFERENCE NO. 39 SHEET 1 OF 11  
 NOTES ASTON DATE 5/25/23 ROUTE SR 109  
 H.C. AUBLE WEATHER WINDY COUNTY HENRY  
 R.C. MILLER TEMP. 56° TOWNSHIP HARRISON  
 \_\_\_\_\_ SECTION 12  
 DWG BY RHOADES PID PAVETRAIN T 5 N R 7 E

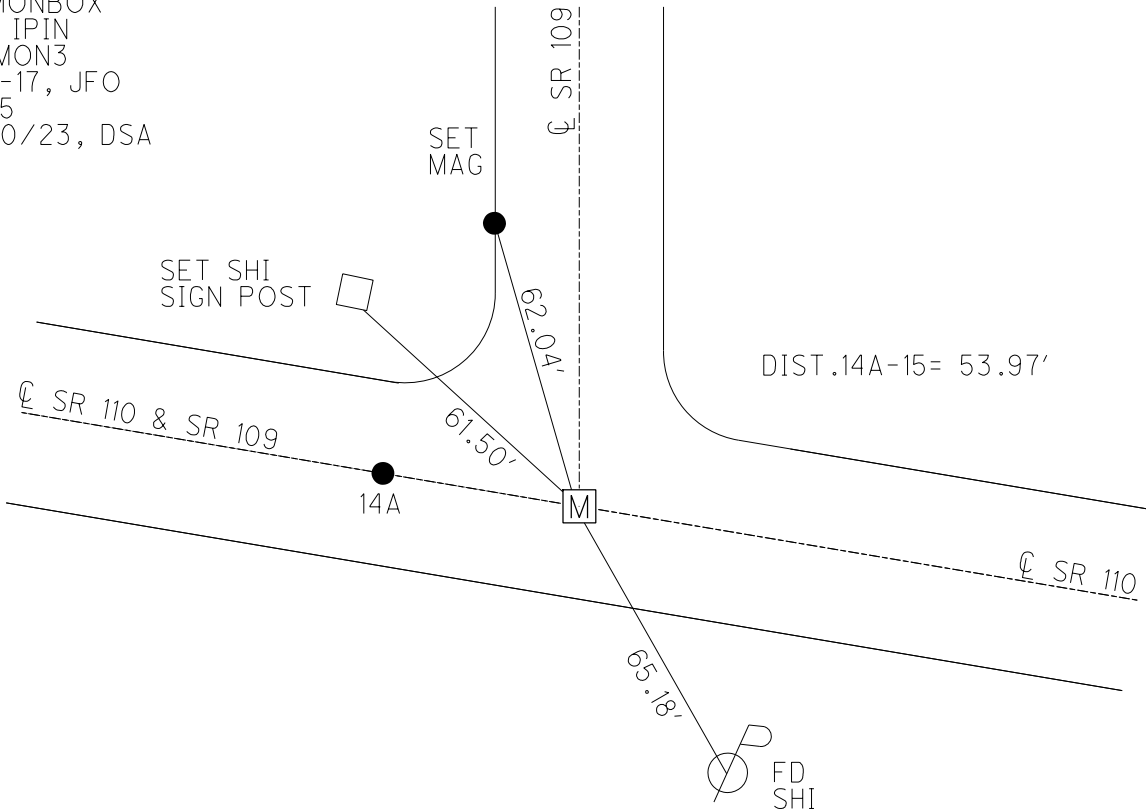
TYPE MONUMENT MONBOX W/1" IPIN  
 ON SURFACE - ~~BELOW~~ ON  
 OFFSET Q PAVEMENT ON LT : RT  
8.4' TO RT EDGE PAVEMENT  
 STATION: 954+22.16



HORZ.DATUM: NAD83 2011 GEOID: NAVD88 2012A  
 GRID: NORTHING: 636928.960 EASTING: 1554419.216

RECORD:  
 SET PK/WASHER  
 10-11-90, MB  
 FD PK/WASHER  
 REF15  
 8-31-15  
 8-3-16, JFO  
 FD MONBOX  
 W/1" IPIN  
 NEWMON3  
 11-17-17, JFO  
 REF15  
 12/20/23, DSA

NOTE: REF 15 SR 110



O.D.O.T. DISTRICT 2 SURVEY OFFICE (USE ONLY)

PERSONNEL

REFERENCE NO. 39

SHEET 1 OF 8

NOTES RHOADES

DATE 8/31/15

ROUTE SR 109

H.C. O'DONNELL

WEATHER FAIR

COUNTY HENRY

R.C. RHOADES

TEMP. 85°

TOWNSHIP HARRISON

DWG BY MILLER PID 90991

SECTION 12

T 5 N R 7 E

TYPE MONUMENT MAG/WASHER

ON SURFACE - ~~BELOW~~ ON

OFFSET 0 PAVEMENT ON LT : RT

8.4' TO RT EDGE PAVEMENT

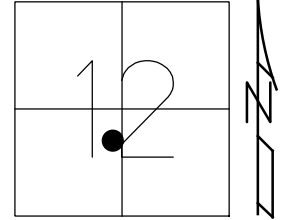
STATION: 954+22.16

HORIZ.DATUM: NAD83 2011

GEOID: NAVD88 2012A

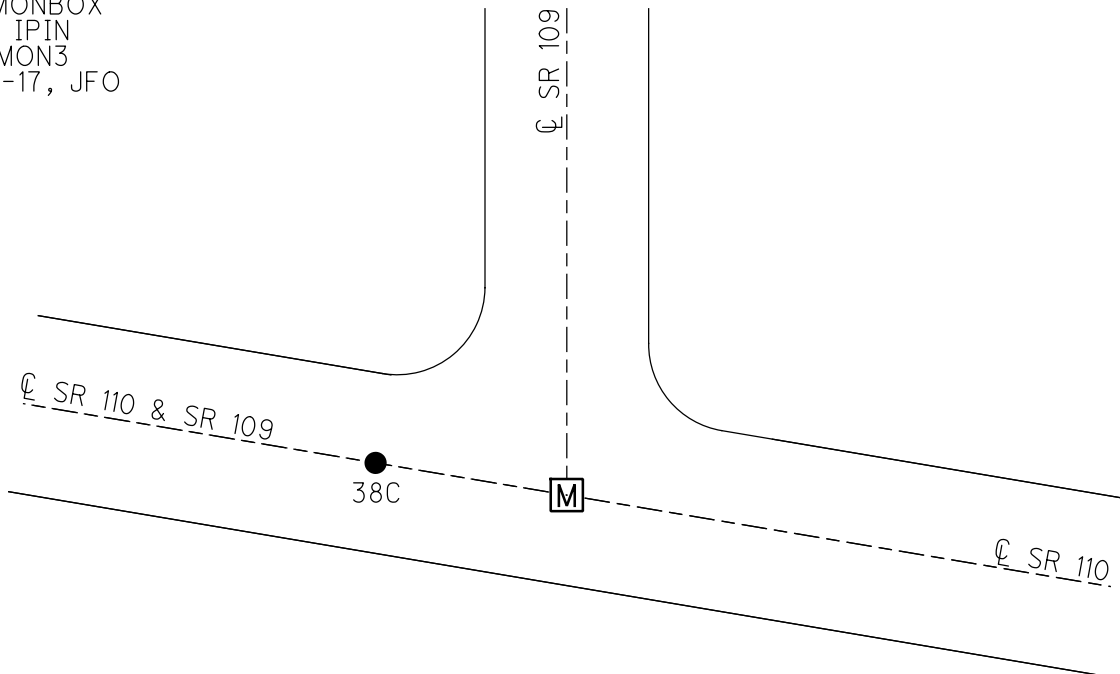
GRID: NORTHING: 636928.960

EASTING: 1554419.216



RECORD:  
SET PK/WASHER  
10-11-90, MB  
FD PK/WASHER  
REF15  
8-31-15  
8-3-16, JFO  
FD MONBOX  
W/1" IPIN  
NEWMON3  
11-17-17, JFO

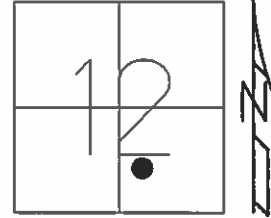
DIST. 38C-39= 53.98'



O.D.O.T. DISTRICT 2 SURVEY OFFICE (USE ONLY)

PERSONNEL \_\_\_\_\_ REFERENCE NO. 39 SHEET 38 OF 38  
 NOTES RHOADES DATE 8-31-15 ROUTE SR 109  
 H.C. O'DONNELL WEATHER FAIR COUNTY HENRY  
 R.C. RHOADES TEMP. 85°F TOWNSHIP HARRISON  
 \_\_\_\_\_ SECTION 12  
 \_\_\_\_\_ T 5 N R 7 E

TYPE MONUMENT MAG/WASHER  
 ON SURFACE - ~~BELOW~~ ON  
 LEFT - Q PAV'T - RIGHT ON  
8.4' TO RT EDGE PAVEMENT  
 S.L.M. 952+79



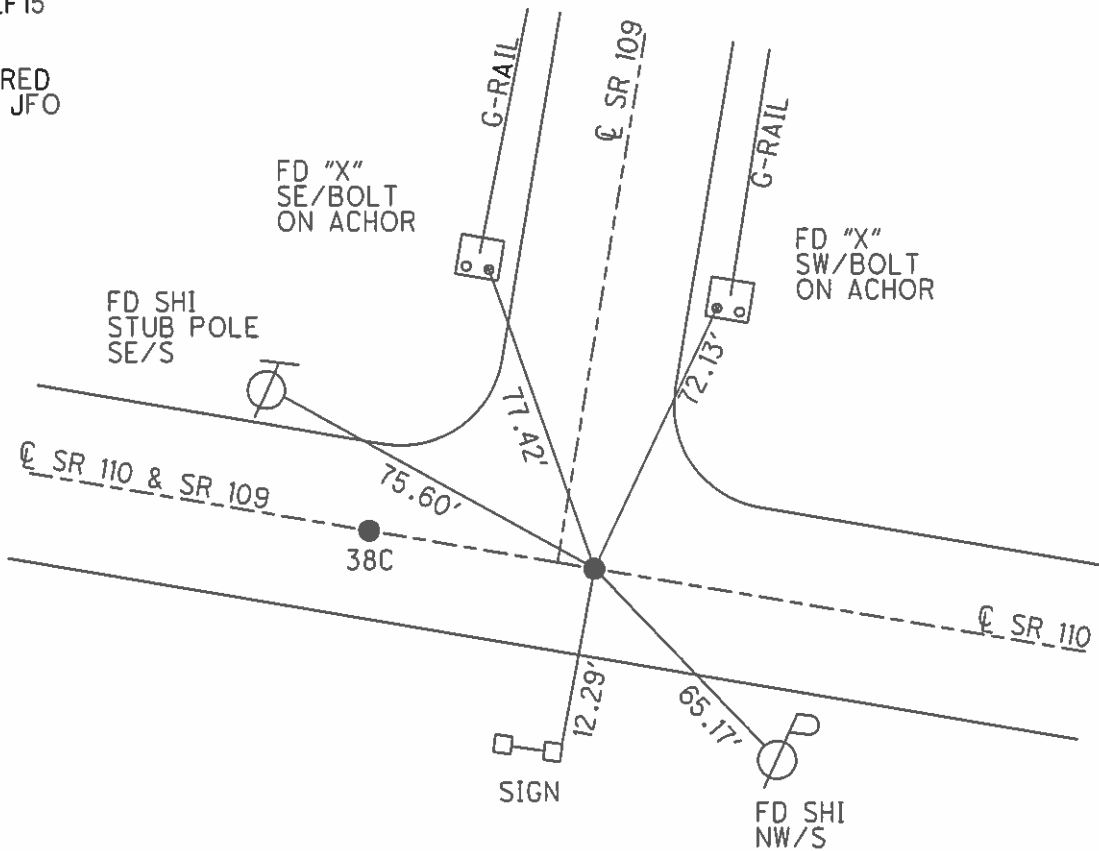
Grid: Northing: 636928.9498 Easting: 1554419.2201

RECORD:  
 SET PK/WASHER  
 10-11-90, MB

DIST. 38C-39= 53.98'

FD PK/WASHER  
 GPS, REF15  
 8-31-15

UNCOVERED  
 8-3-16, JFO



O.D.O.T. DISTRICT 2 SURVEY OFFICE

PERSONNEL

REFERENCE NO. <sup>#15 SR10</sup>  
~~#39 SR109~~

SHEET 9 OF 9

NOTES HOMAN

DATE 8-13-02

ROUTE S.R. 109

H.C. ROUSOS

WEATHER CLOUDY

COUNTY HENRY

R.C. BEAUMONT

TEMP. 85

TOWNSHIP HARRISON

SECTION 12

T 5 N R 7 E

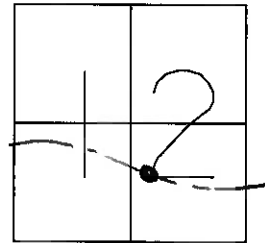
TYPE MONUMENT PK & WASHER

ON SURFACE - BELOW ON

LEFT - Q PAV'T - RIGHT ON

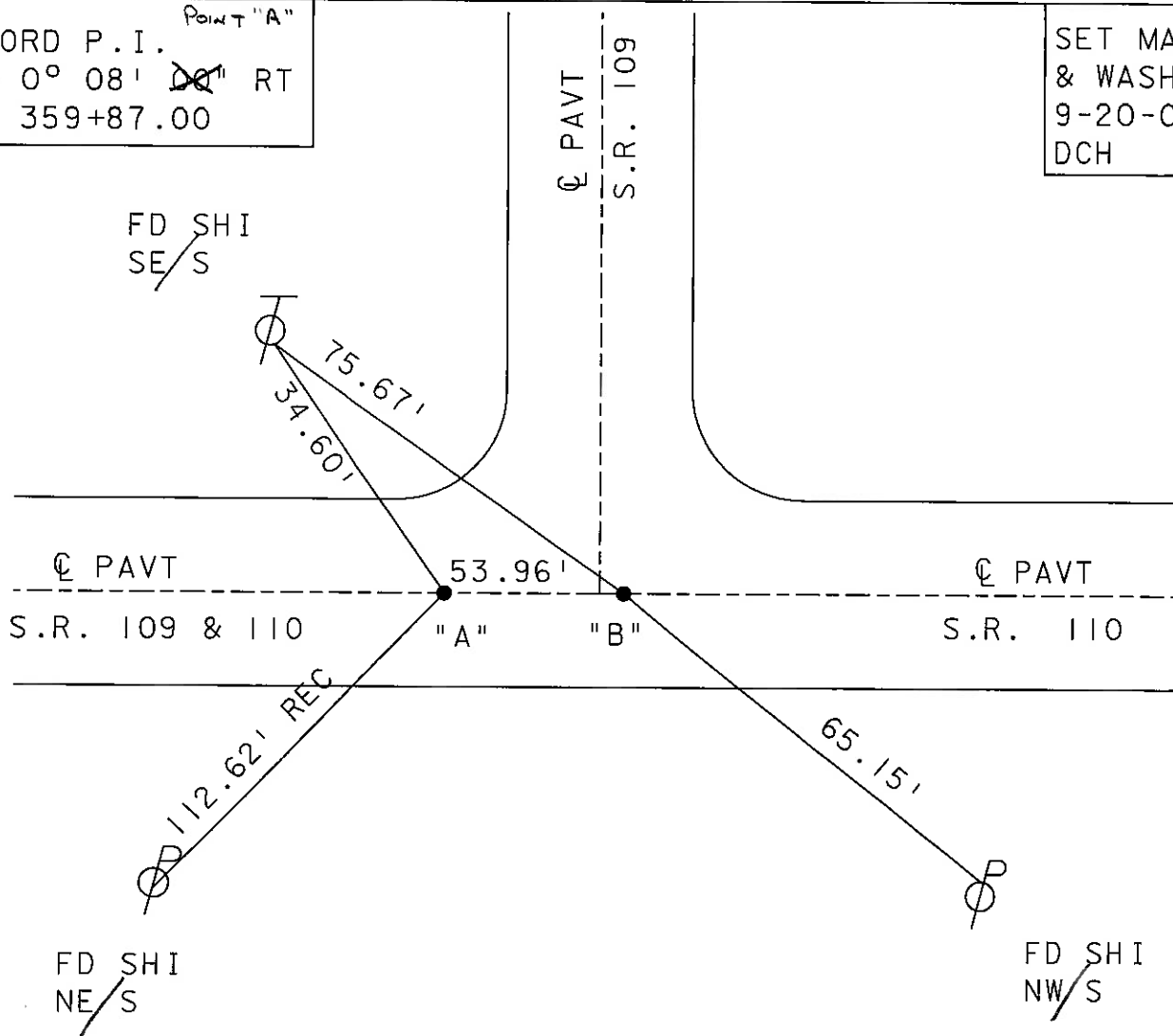
9' TO RT EDGE PAVEMENT

S.L.M. 952+25@PT A



RECORD P.I. <sup>Point "A"</sup>  
 $\Delta = 0^\circ 08' 00''$  RT  
STA 359+87.00

SET MAG NAIL  
& WASHER  
9-20-02  
DCH



# O.D.O.T. DISTRICT 2 SURVEY OFFICE

# 15 SE 110

PERSONNEL \_\_\_\_\_

REFERENCE NO. # 39 SR 109 SHEET \_\_\_\_\_ OF \_\_\_\_\_

NOTES BARNHISEL

H.C. \_\_\_\_\_

DATE 9-28-90

ROUTE 109 & 110

R.G. HOFFMAN

WEATHER Clear

COUNTY HENRY

TEMP. +65°

TOWNSHIP HARRISON

SECTION 12

T5 N R 7 E

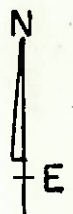
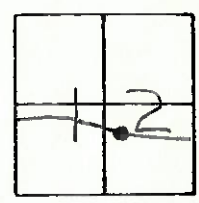
TYPE MONUMENT PK NAILS & Washers

ON SURFACE - BELOW YES YES

LEFT - C PAV'T. - RIGHT YES YES

<sup>A</sup> <sub>B</sub> TO RT EDGE PAVEMENT

S.L.M. "A" 952+25 "B" 952+79

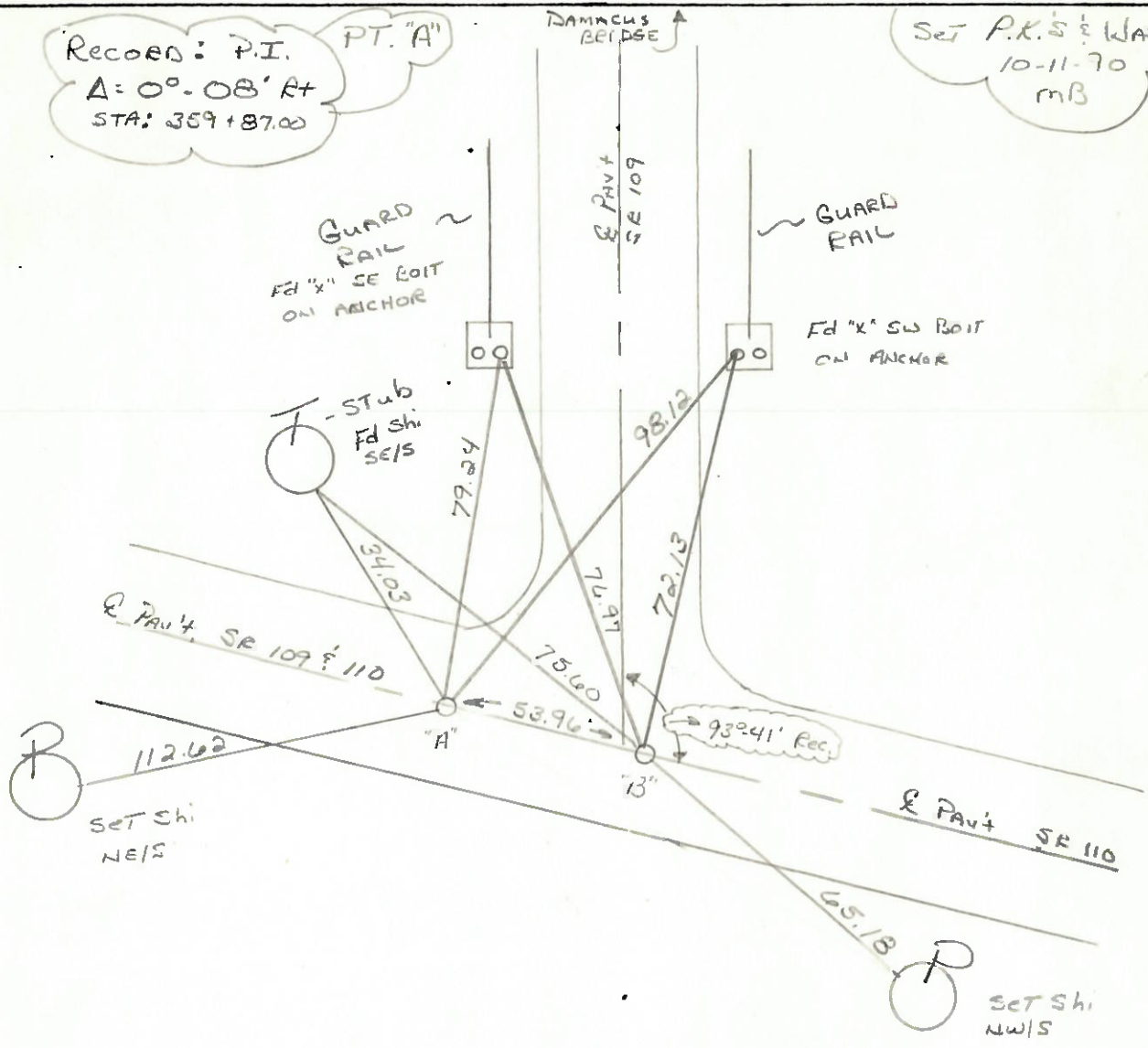


RECORD: P.I.  
 $\Delta = 0^\circ - 08' \text{ Rt}$   
 STA: 359+87.00

PT. "A"

DAMASCUS BRIDGE

Set P.K.'s & Washers  
 10-11-70  
 MB



ODDOT DISTRICT 2 SURVEY OFFICE

SHEET \_\_\_\_\_ OF \_\_\_\_\_

County HENRY S.R. 109 & SR 110

Date 3-23-84

Township HARRISON

Weather clear

Section 12

Temp. +25°

TSN, RZE

Personnel HOFFMAN



#15 SR 110

LOENRICE

#39 SR 109

HOUSEHOLDER

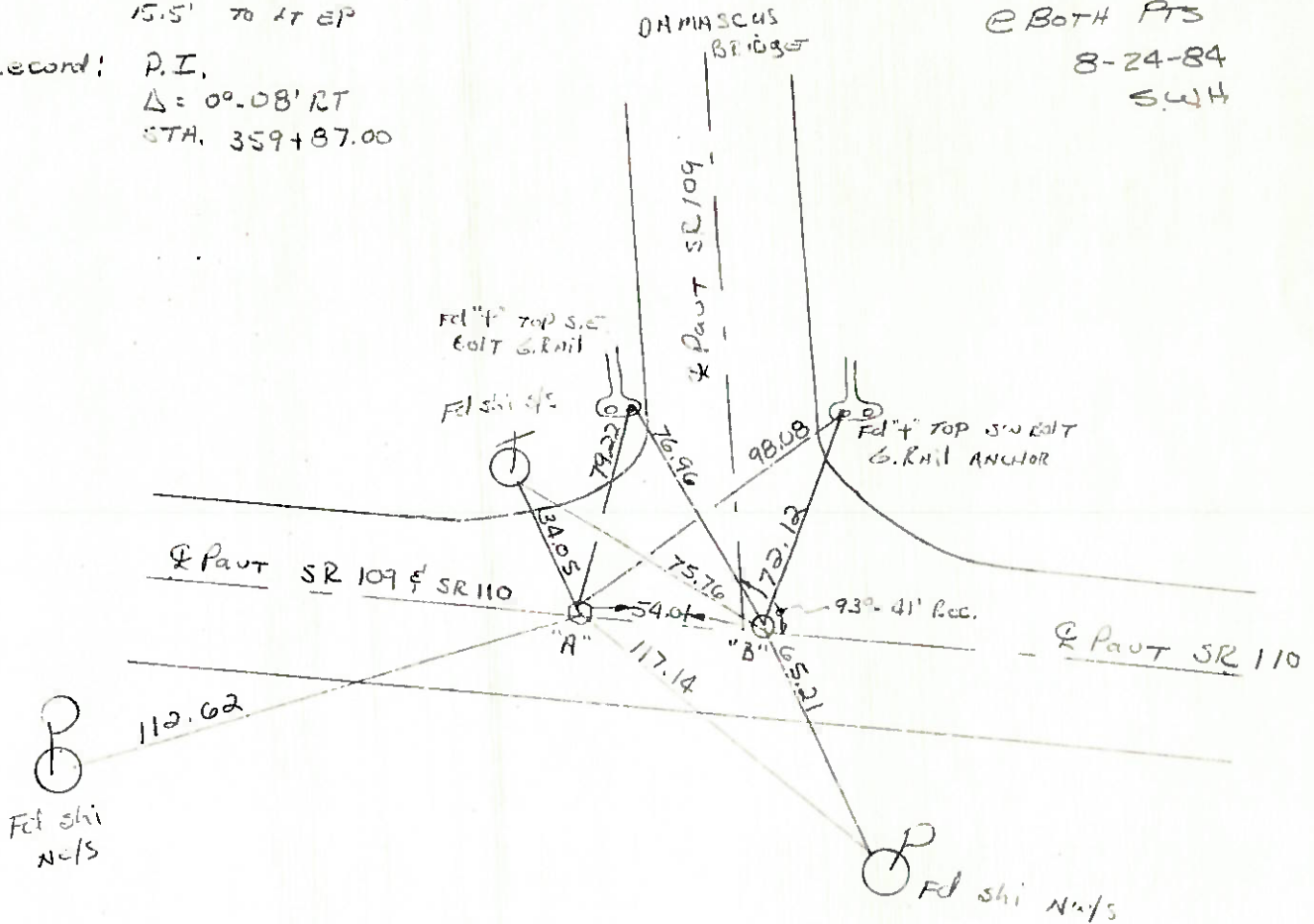
BARANISH

PT. "A" Fd small R.R. spike 2" below surface  
ON E SR 109 & SR 110 POINT  
11.0' TO RT EP  
15.5' TO LT EP

SLM 952+42

SET PK/WASHER  
@ BOTH PTS  
8-24-84  
SWH

Record: P.I.  
Δ = 00° 08' RT  
STA. 359+87.00



PT. "B" Fd P.K. NAIL ON SURFACE  
of survey SR 110 & 04  
of CONST SR 109 NORTH  
STA. 360+41.01 SR 110 =  
STA. 954+22.50 SR 109

SLM = 952+96  
ON the Point SR 110 EAST  
1.0' E. of Point SR 109 NORTH

PERSONNEL TITLE PERSONNEL TITLE  
 BURNSIDE \_\_\_\_\_  
 Tamsic \_\_\_\_\_  
 MEAD \_\_\_\_\_  
 J. KNEPLEY  
 P. ROSSMAN

COUNTY HENRY DATE 7-19-76

S. R. 109 WEATHER CLEAR

SEC. DAMASCUS BRIDGE TEMP. +80

DESCRIPTION LOCATION OF MONUMENT BOXES JOB NO. 028500

