

O.D.O.T. DISTRICT 2 SURVEY OFFICE (USE ONLY)

PERSONNEL

REFERENCE NO. 43 A

SHEET 3 OF 31

NOTES NIESE

DATE 3/5/21

ROUTE SR 109

H.C. RHOADES

WEATHER SUNNY

COUNTY HENRY

R.C. _____

TEMP. 30°

TOWNSHIP LIBERTY

DWG BY NIESE PID PAVE TRAIN

SECTION 1

T 5 N R 7 E

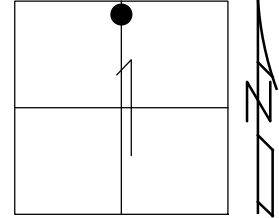
TYPE MONUMENT MONBOX W/1" IPIN

ON SURFACE - ~~BELOW~~ ON

OFFSET ☉ PAVEMENT ON LT : RT

- TO - EDGE PAVEMENT

STATION: 1044+31



HORZ.DATUM: NAD83 2011

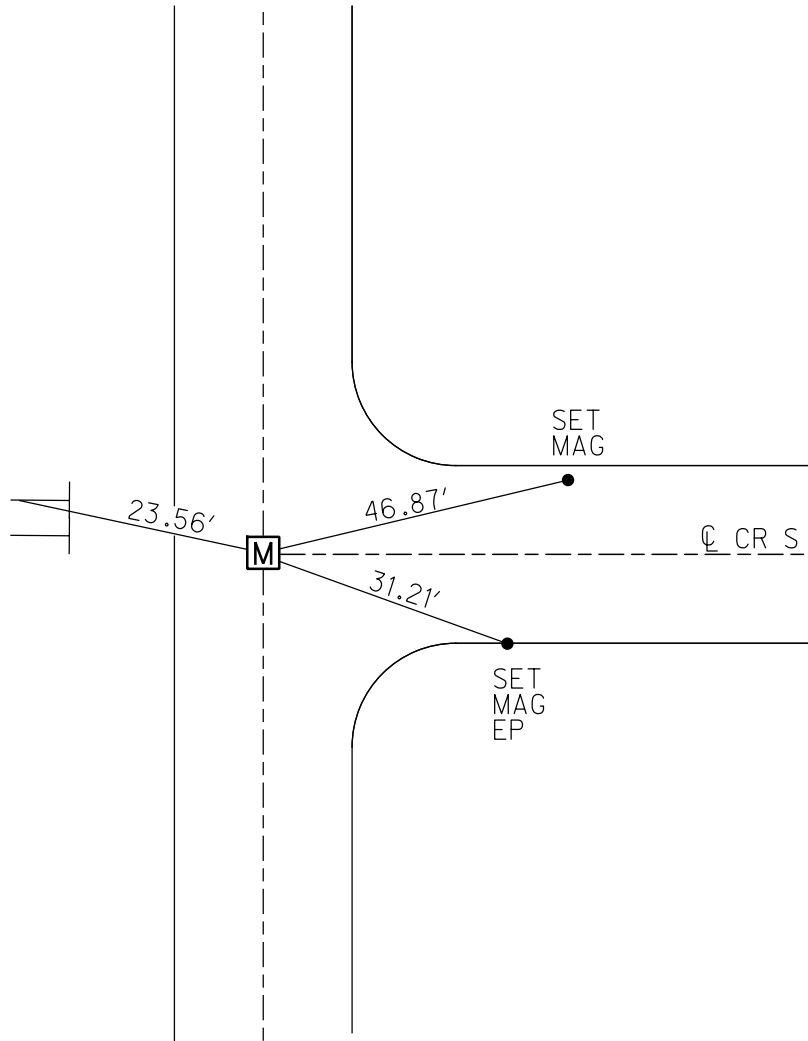
GEOID: NAVD88 2012A

GRID: NORTHING: 644626.512

EASTING: 1554736.851

RECORD:
 FD R.R.SPIKE
 8/13/02, DCH
 SET MAG/WASHER
 12/2/02, DCH
 FD MONBOX
 W/ 1" IPIN
 2/26/19, JLL
 REFA43
 8/6/20, DSA
 3/5/21, JMR

1' UP
 2 WAY ARROW
 SIGN POST



O.D.O.T. DISTRICT 2 SURVEY OFFICE

PERSONNEL

REFERENCE NO. 44

SHEET 7 OF 27

NOTES HOMAN

DATE 8-13-02

ROUTE S.R. 109

H.C. ROUSOS

WEATHER CLOUDY

COUNTY HENRY

R.C. BEAUMONT

TEMP. 90

TOWNSHIP LIBERTY

SECTION 1

T 5 N R 7 E

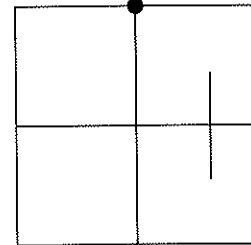
TYPE MONUMENT RR SPIKE

ON SURFACE - BELOW ON

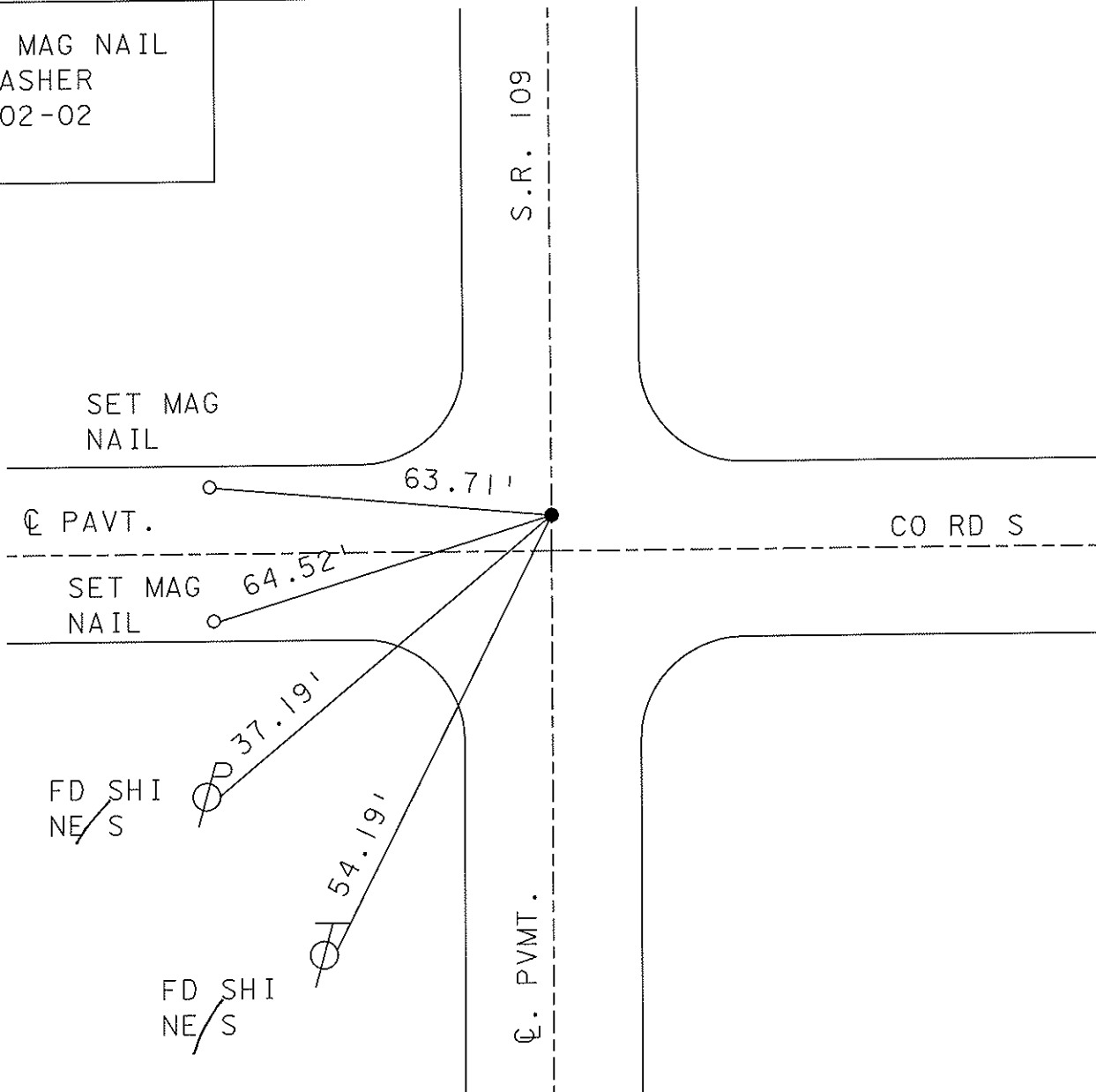
LEFT - \odot PAV'T - RIGHT 0.9'

TO EDGE PAVEMENT 4' N OF \odot
PAVT WEST

S.L.M. 1044+31



SET MAG NAIL
& WASHER
12-02-02
DCH



O.D.O.T. DISTRICT 2 SURVEY OFFICE

PERSONNEL _____

REFERENCE NO. 44

SHEET _____ OF _____

NOTES BAENHISEL

H.C. Loehreke

R.C. _____

DATE 5-13-87

WEATHER SUNNY

TEMP. +75°

ROUTE SR 109

COUNTY HENRY

TOWNSHIP LIBERTY

SECTION 1

T 5 N R 7 E

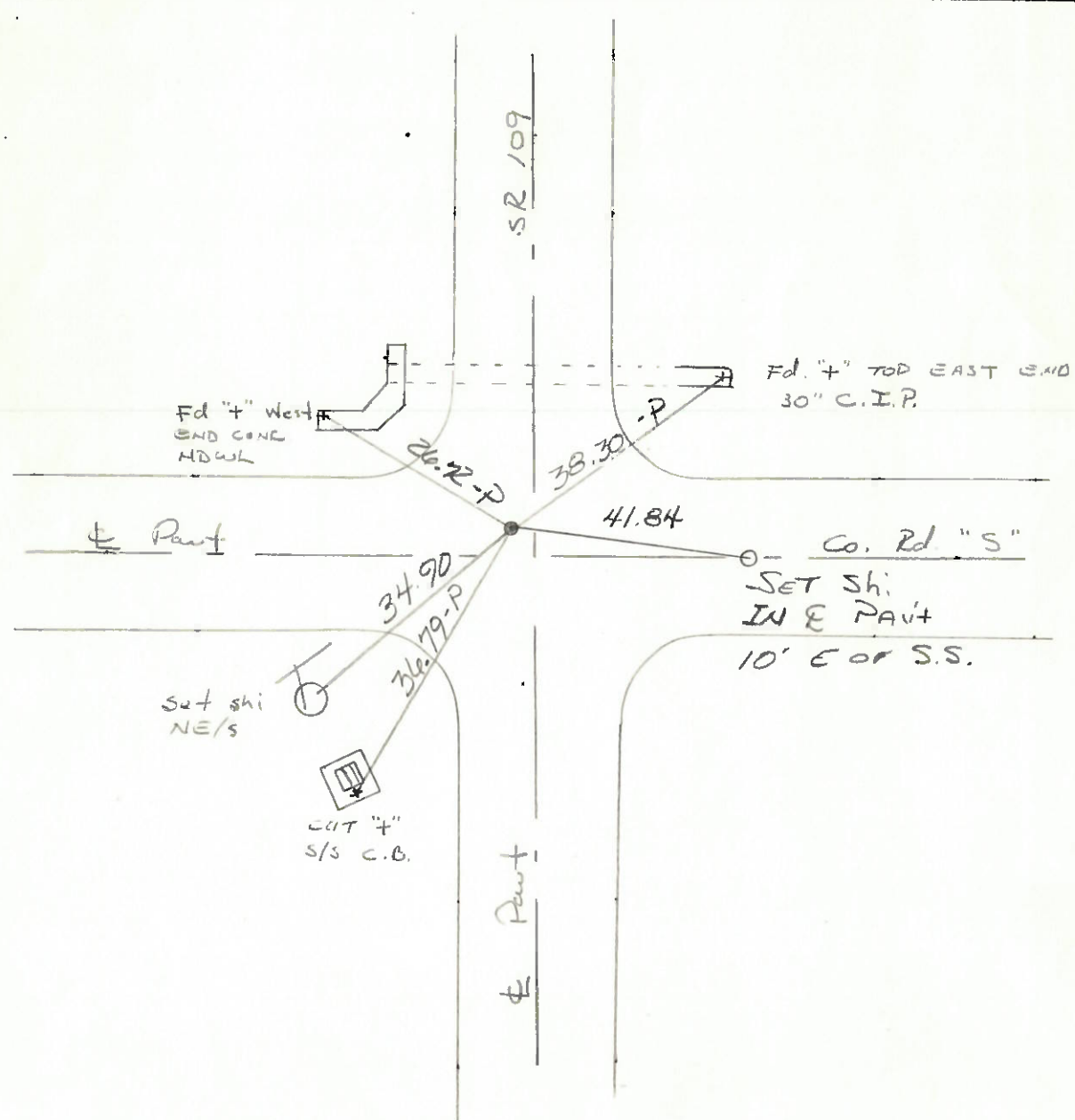
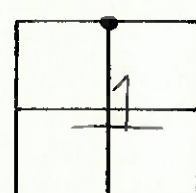
TYPE MONUMENT Nail over stake Set small RL spike 6-16-87 spot

ON SURFACE - BELOW YES

LEFT - PAV'T. - RIGHT 0.9'

TO EDGE PAVEMENT 4' N. of Pavt West

S.L.M. 1044 + 13



PERSONNEL	TITLE	PERSONNEL	TITLE	COUNTY	DATE
Toussic				HENRY	DEC. 17, 1973
Neuser				S. R. 109	WEATHER
Vanyo				SEC. HARRISON TWP.	TEMP.
Granata					

DESCRIPTION	LEFT	CENTER LINE	RIGHT	JOB NO.
-------------	------	-------------	-------	---------

