

O.D.O.T. DISTRICT 2 SURVEY OFFICE (USE ONLY)

PERSONNEL

REFERENCE NO. 46

SHEET 8 OF 31

NOTES RHOADES

DATE 6/27/22

ROUTE SR 109

H.C. AUBLE

WEATHER SUNNY

COUNTY HENRY

R.C. RHOADES

TEMP. 70°

TOWNSHIP LIBERTY

SECTION 25

DWG BY RHOADES PID PAVETRAIN

T 6 N R 7 E

TYPE MONUMENT MAG/WASHER

ON SURFACE - ~~BELOW~~ ON _____

OFFSET \odot PAVEMENT 1' ~~LT~~ : RT

- TO - EDGE PAVEMENT

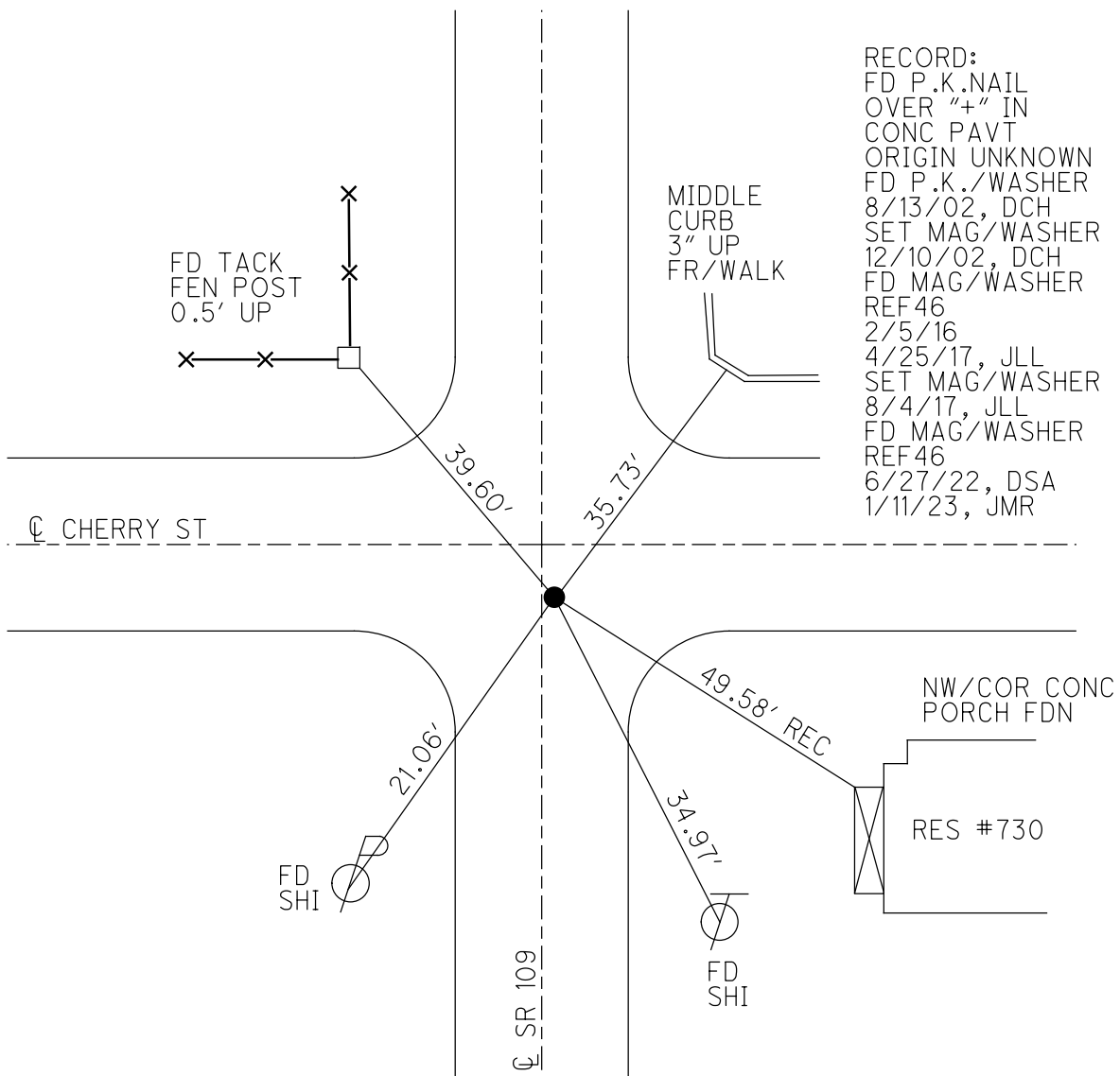
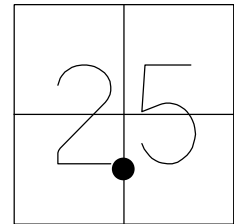
STATION: 1116+19.2

HORZ.DATUM: NAD83 2011

GEOID: NAVD88 2018

GRID: NORTHING: 652105.322

EASTING: 1554887.458

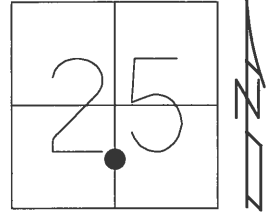


RECORD:
 FD P.K.NAIL
 OVER "+" IN
 CONC PAVT
 ORIGIN UNKNOWN
 FD P.K./WASHER
 8/13/02, DCH
 SET MAG/WASHER
 12/10/02, DCH
 FD MAG/WASHER
 REF46
 2/5/16
 4/25/17, JLL
 SET MAG/WASHER
 8/4/17, JLL
 FD MAG/WASHER
 REF46
 6/27/22, DSA
 1/11/23, JMR

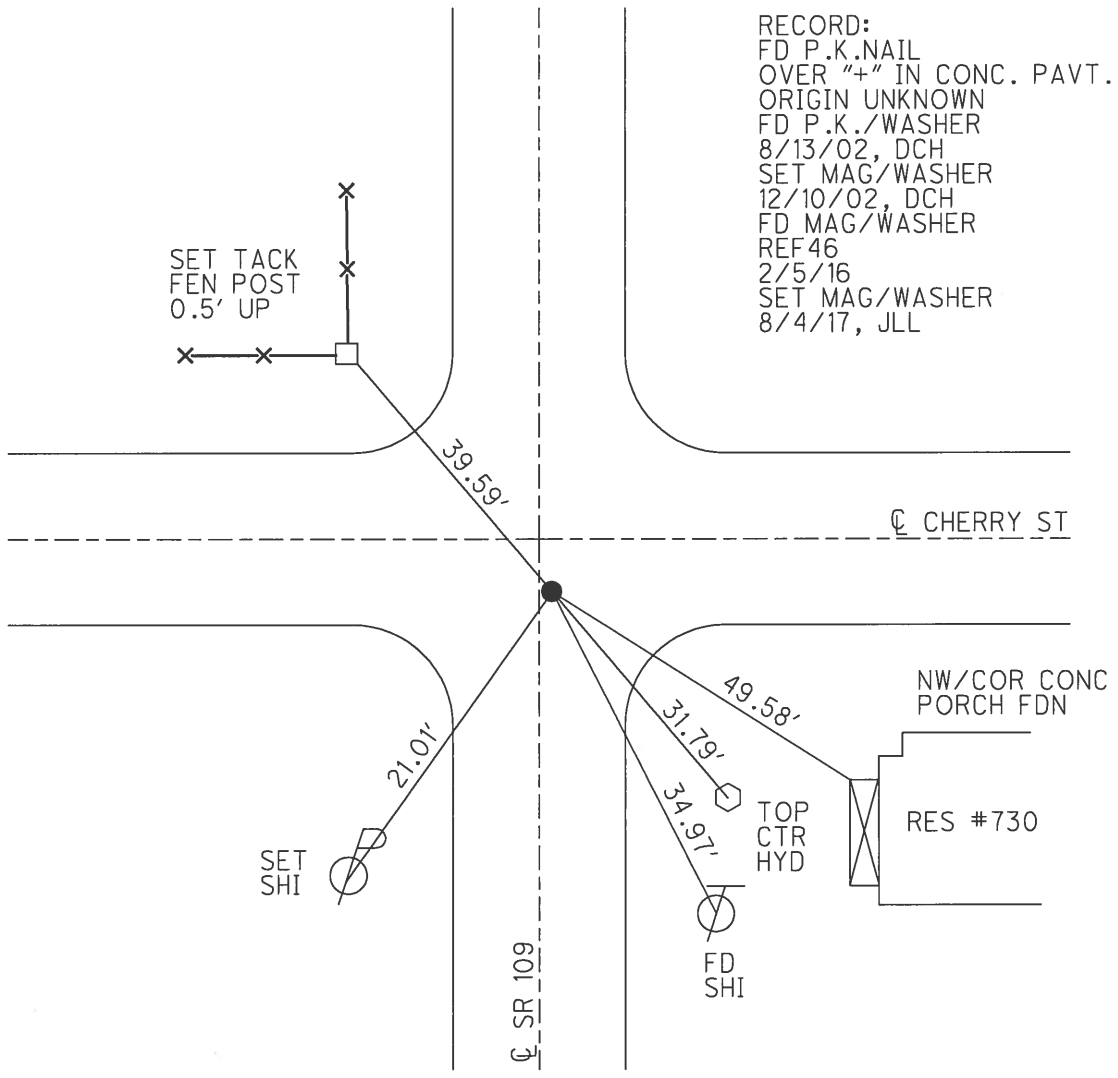
O.D.O.T. DISTRICT 2 SURVEY OFFICE (USE ONLY)

PERSONNEL	REFERENCE NO.	<u>46</u>	SHEET	<u>4</u>	OF	<u>8</u>
NOTES	LEU	DATE	<u>4/25/17</u>	ROUTE	<u>SR 109</u>	
H.C.	LEU	WEATHER	<u>CLOUDY</u>	COUNTY	<u>HENRY</u>	
R.C.	HELDMAN	TEMP.	<u>60°</u>	TOWNSHIP	<u>LIBERTY</u>	
				SECTION	<u>25</u>	
				T	<u>6</u>	N
				R	<u>7</u>	E

TYPE MONUMENT MAG/WASHER
 ON SURFACE - ~~BELOW~~ ON _____
~~LEFT~~ - ☉ PAV'T - RIGHT 1', 3.5' S. OF ☉ W.
 - TO - EDGE PAVEMENT
 S.L.M. 1116+48.70



GRID: NORTHING: 652105.322 EASTING: 1554887.458



RECORD:
 FD P.K.NAIL
 OVER "+" IN CONC. PAVT.
 ORIGIN UNKNOWN
 FD P.K./WASHER
 8/13/02, DCH
 SET MAG/WASHER
 12/10/02, DCH
 FD MAG/WASHER
 REF 46
 2/5/16
 SET MAG/WASHER
 8/4/17, JLL

O.D.O.T. DISTRICT 2 SURVEY OFFICE

PERSONNEL

REFERENCE NO. 46

SHEET 9 OF 27

NOTES HOMAN

DATE 8-13-02

ROUTE S.R. 109

H.C. ROUSOS

WEATHER CLOUDY

COUNTY HENRY

R.C. BEAUMONT

TEMP. 90

TOWNSHIP LIBERTY

SECTION 25

T 6 N R 7 E

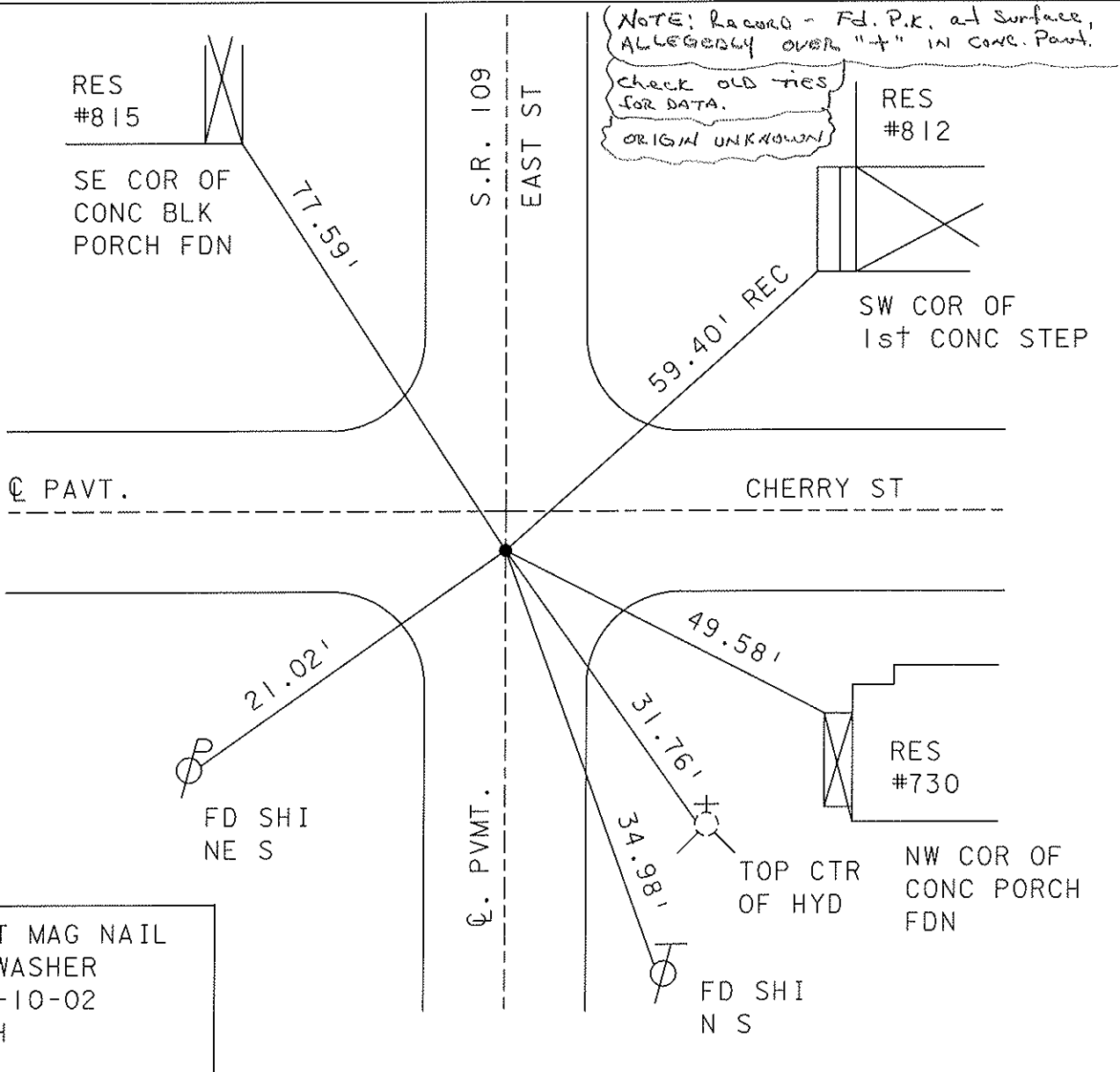
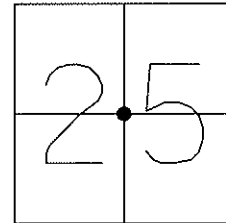
TYPE MONUMENT PK & WASHER

ON SURFACE - BELOW ON

LEFT - Q PAV'T - RIGHT ON

TO EDGE PAVEMENT

S.L.M. 1116+51



SET MAG NAIL & WASHER
12-10-02
DCH

O.D.O.T. DISTRICT 2 SURVEY OFFICE

PERSONNEL _____

REFERENCE NO. 46

SHEET _____ OF _____

NOTES BARNHISEL

H.C. BURNETT

R.C. KUSZ

VAN DUSEN

DATE 7-22-92

WEATHER Cloudy

TEMP. +70°

ROUTE SR 109

COUNTY HENRY

TOWNSHIP LIBERTY

SECTION 25

T 6 N R 7 E

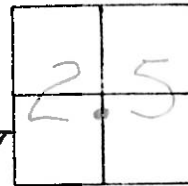
TYPE MONUMENT P.K. SHANK

ON SURFACE - BELOW yes

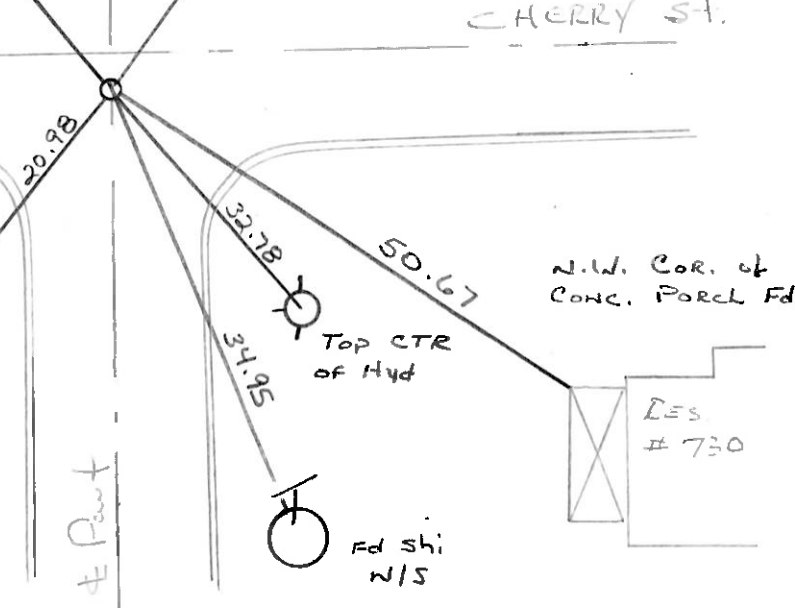
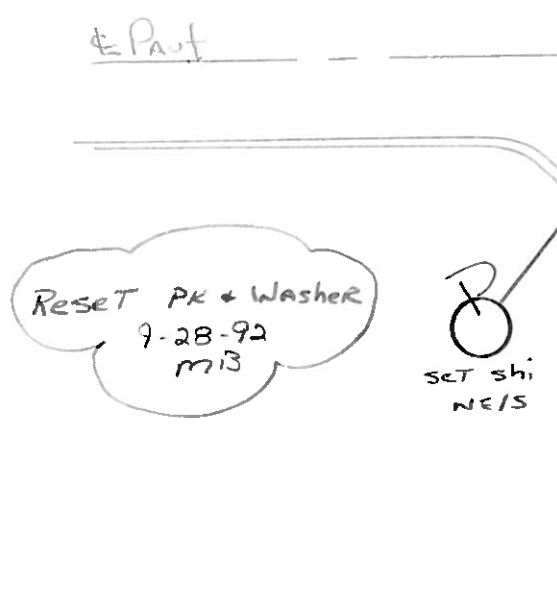
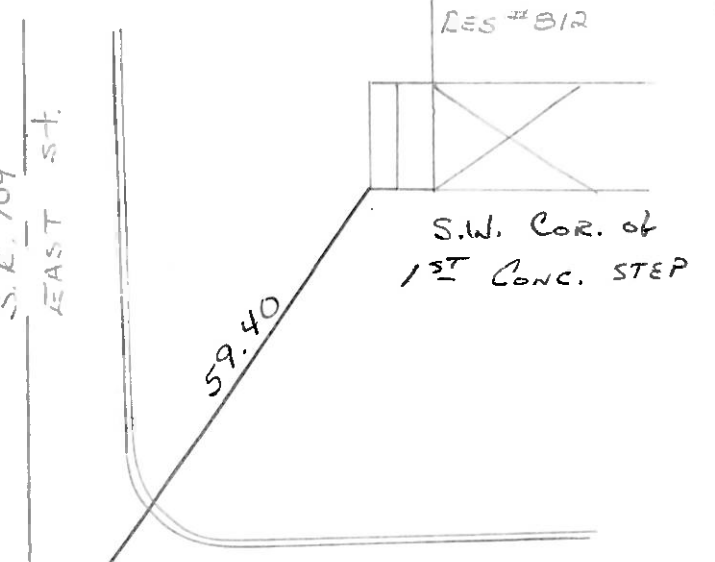
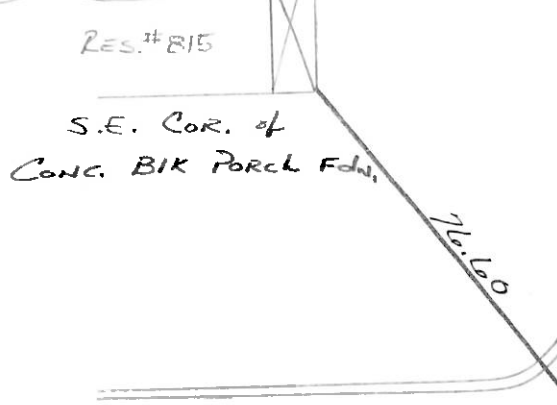
LEFT - & PAV'T. - RIGHT yes

- TO - EDGE PAVEMENT 4.5 S. of & PAV'T WEST

S.L.M. 1116+51



RECORD:
FD. P.K. AT SURFACE
ALLEGEDLY OVER 4'
IN CONC. PAVT.



ODOT. DISTRICT 2 SURVEY OFFICE

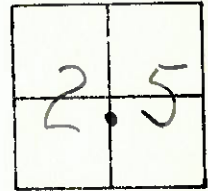
SHEET / OF

County HENRY S.R. 109
Township Liberty - IN LIBERTY
Section 25
T6N, R7E
Personnel S. Hoffmann

Date 6-1-81
Weather clear
Temp. +72°

#46

C. Loehrke
L. Householder



Res # 815

S.E. CORNER
CONC. BLK PORCH FDN.
SHINER
SE/S
18" MAPLE

Fd. P.K. @ SURFACE
(ALLEGEDLY OVER "4" IN CONC)
FAVE.
RE-SET P.K. W/ WASHER B-6-81 SWH.

#812

S.W. COR.
TOP of 1ST
CONC STOP.

76.46-D

59.32-D

54.88-D

"4" CUT
S.W. SIDE
M.H. RIM

22.02-D

Cherry ST.

37.36-D

20.41-D

29.87-D

34.79-D

54.73-D

SHINER
NE/S
18" MAPLE

SHINER
NE/S

N.W. CORNER
CONC. PORCH FDN

TOP CTR
FIRE
HYD

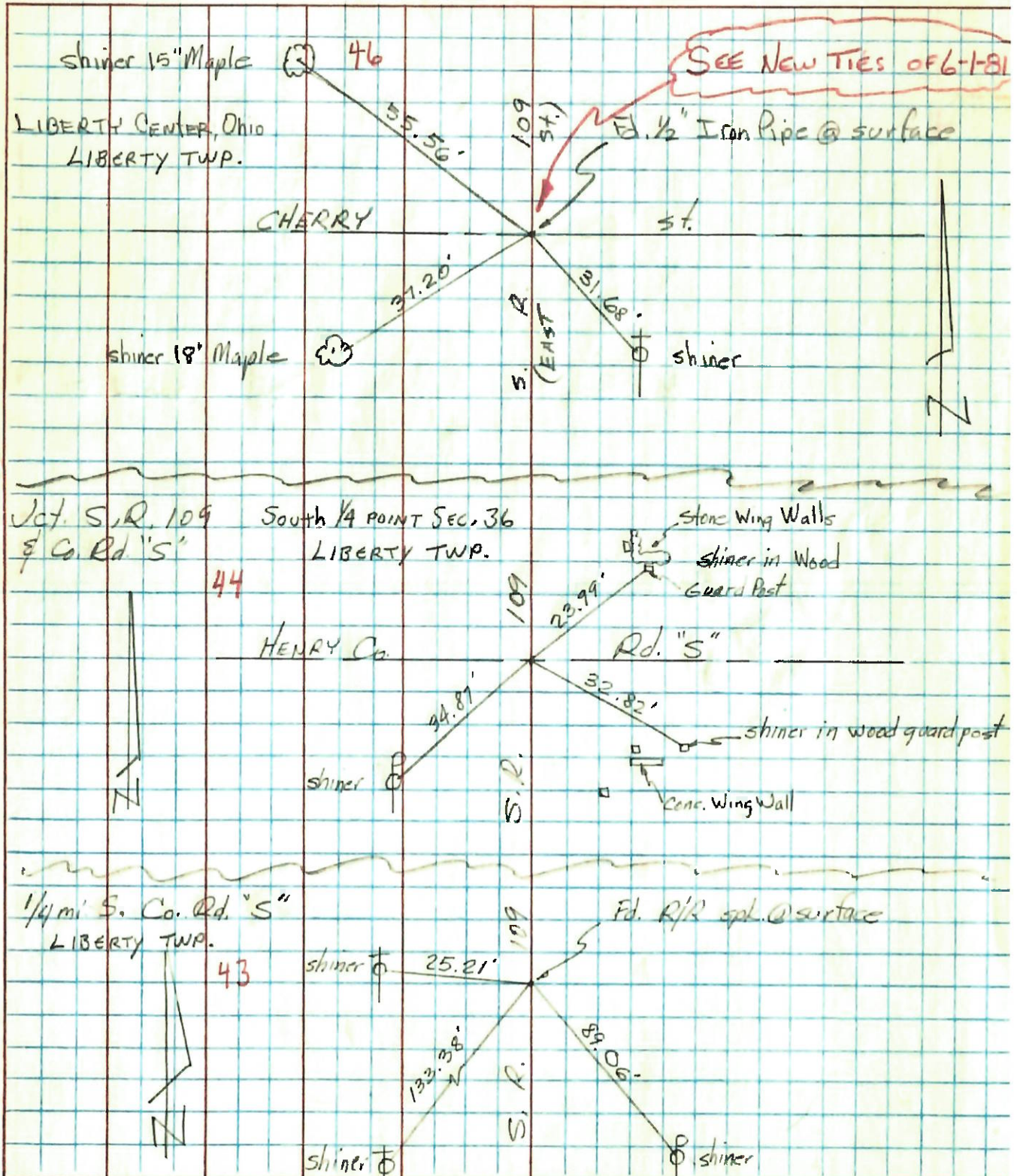
SHINER
N/S

RES.
#730

S.R. 109
(EAST ST.)

PERSONNEL	TITLE	PERSONNEL	TITLE	COUNTY	DATE
Toussic				HENRY	DEC. 17, 1973
Neuser				S. R. 109	WEATHER
Vanyo				SEC. HARRISON TWP.	TEMP.
Granata					

DESCRIPTION	LEFT	CENTER LINE	RIGHT	JOB NO.
-------------	------	-------------	-------	---------



PERSONNEL	TITLE	PERSONNEL	TITLE	COUNTY	DATE
Red Beach				HENRY	June 1970
Newcomb					
Knafe				S. R. 109	WEATHER
Wise				SEC Liberty Center, North	TEMP

CONTROL POINTS

