

O.D.O.T. DISTRICT 2 SURVEY OFFICE (USE ONLY)

PERSONNEL

REFERENCE NO. 48

SHEET 18 OF 31

NOTES NIESE

DATE 3/5/21

ROUTE SR 109

H.C. RHOADES

WEATHER SUNNY

COUNTY HENRY

R.C. _____

TEMP. 30°

TOWNSHIP LIBERTY

DWG BY NIESE

PID PAVE TRAIN

SECTION 24

T 6 N R 7 E

TYPE MONUMENT MAG/WASHER

ON SURFACE - ~~BELOW~~ ON

OFFSET \varnothing PAVEMENT ON LT : RT

- TO - EDGE PAVEMENT

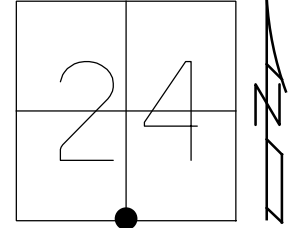
STATION: 1156+18.7

HORZ.DATUM: NAD83 2011

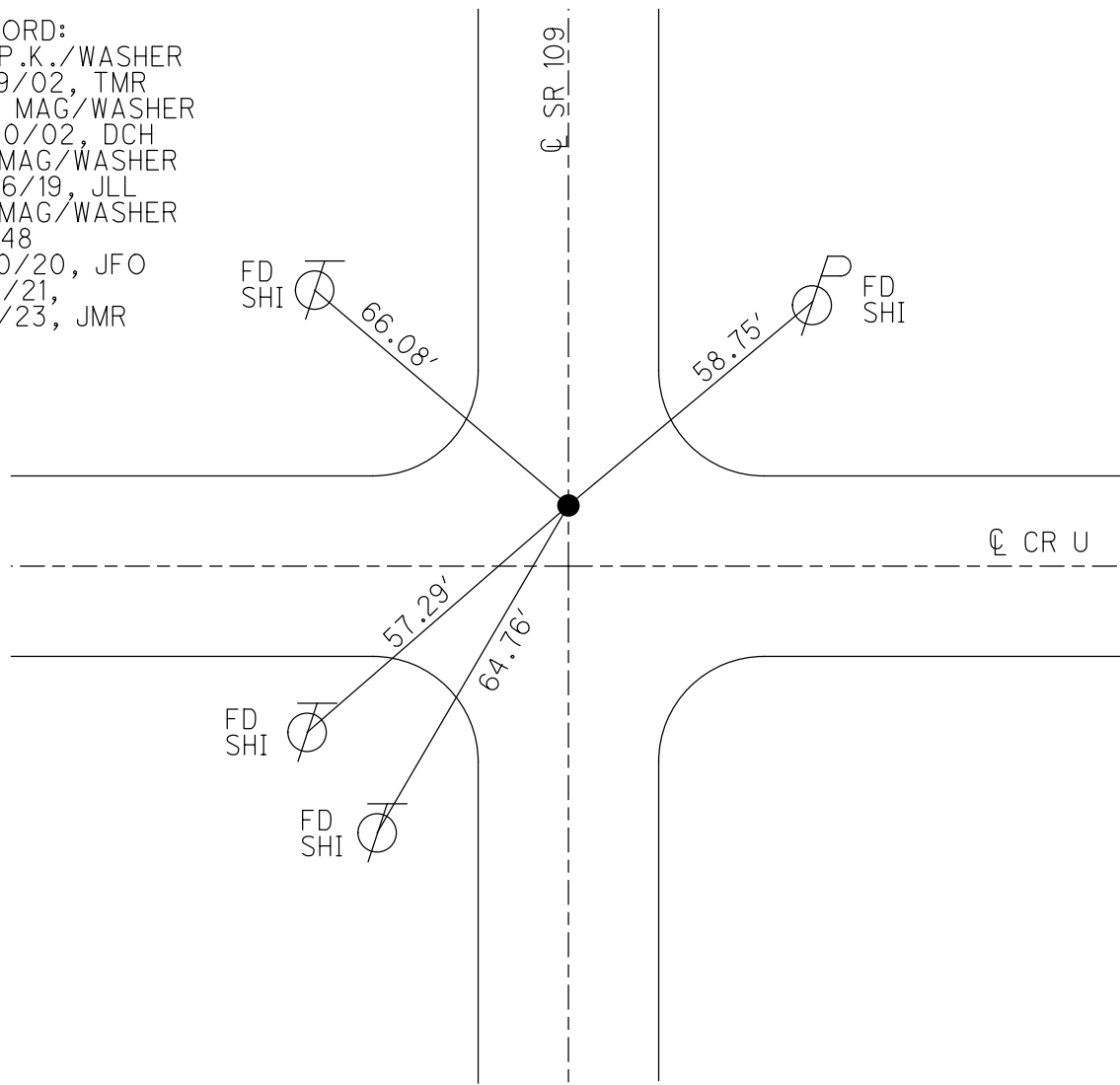
GEOID: NAVD88 2012A

GRID: NORTHING: 656075.273

EASTING: 1554958.631



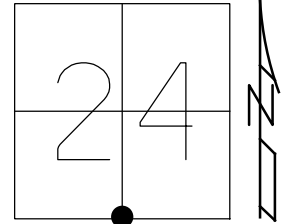
RECORD:
 FD P.K./WASHER
 8/19/02, TMR
 SET MAG/WASHER
 12/10/02, DCH
 FD MAG/WASHER
 2/26/19, JLL
 FD MAG/WASHER
 REF48
 6/10/20, JFO
 3/5/21,
 1/11/23, JMR



O.D.O.T. DISTRICT 2 SURVEY OFFICE (USE ONLY)

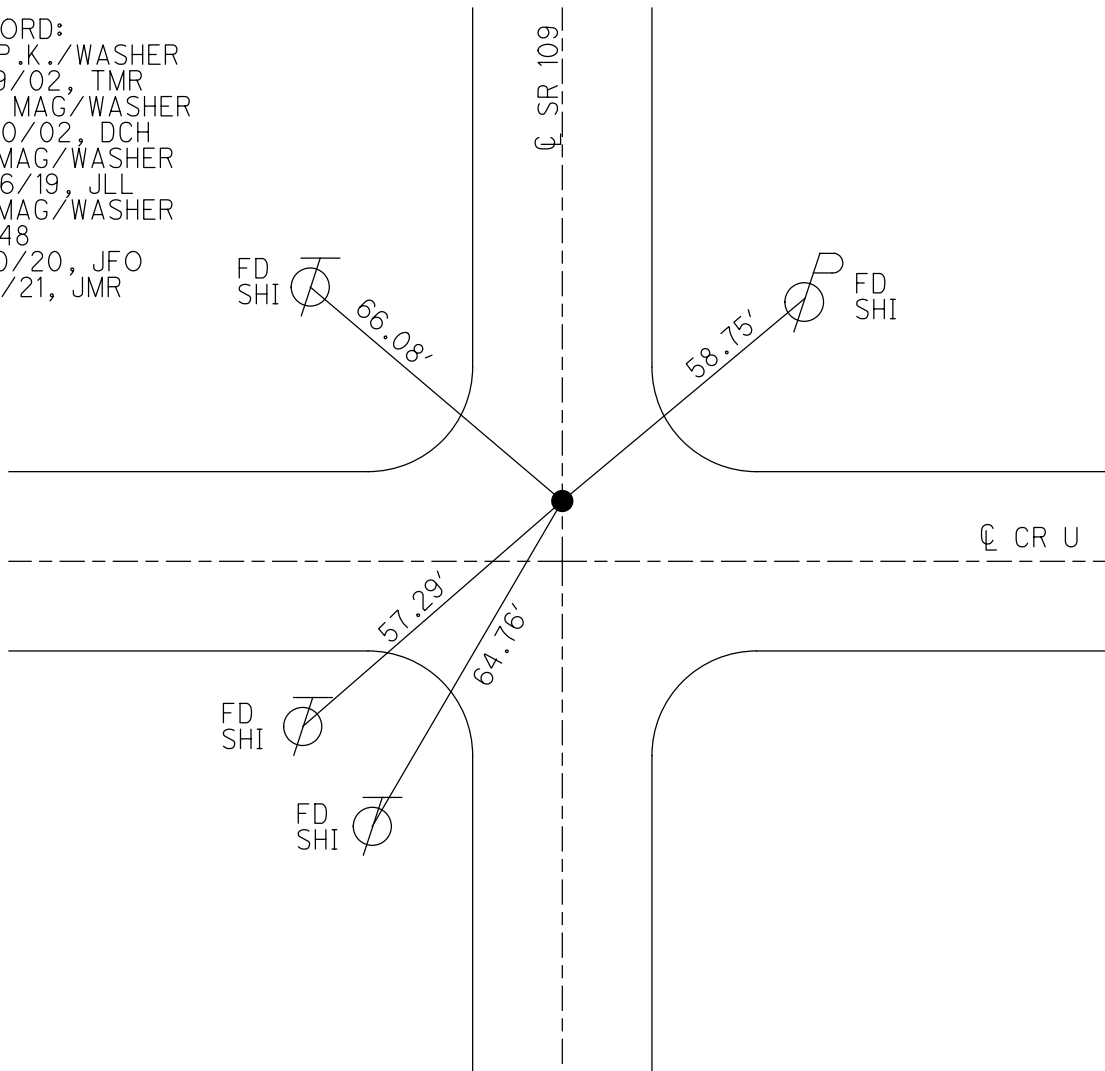
PERSONNEL _____ REFERENCE NO. 48 SHEET 18 OF 31
 NOTES NIESE DATE 3/5/21 ROUTE SR 109
 H.C. RHOADES WEATHER SUNNY COUNTY HENRY
 R.C. _____ TEMP. 30° TOWNSHIP LIBERTY
 _____ SECTION 24
 DWG BY NIESE PID PAVE TRAIN T 6 N R 7 E

TYPE MONUMENT MAG/WASHER
 ON SURFACE - ~~BELOW~~ ON
 OFFSET Q PAVEMENT ON LT : RT
- TO - EDGE PAVEMENT
 STATION: 1156+22



HORIZ.DATUM: NAD83 2011 GEOID: NAVD88 2012A
 GRID: NORTHING: 656075.273 EASTING: 1554958.631

RECORD:
 FD P.K./WASHER
 8/19/02, TMR
 SET MAG/WASHER
 12/10/02, DCH
 FD MAG/WASHER
 2/26/19, JLL
 FD MAG/WASHER
 REF48
 6/10/20, JFO
 3/5/21, JMR



O.D.O.T. DISTRICT 2 SURVEY OFFICE

PERSONNEL

REFERENCE NO. 48

SHEET 16 OF 27

NOTES MICHALAK

DATE 8-19-02

ROUTE S.R. 109

H.C. ROUSOS

WEATHER RAIN

COUNTY HENRY

R.C. BEAUMONT

TEMP. 90

TOWNSHIP LIBERTY

SECTION 24

T 6 N R 7 E

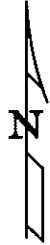
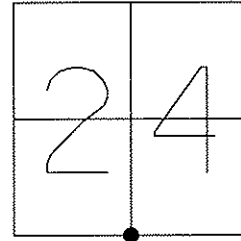
TYPE MONUMENT PK NAIL & WASHER

ON SURFACE - ~~BELOW~~ ON

~~LEFT - Q~~ PAV'T - ~~RIGHT~~ ON

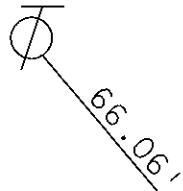
TO EDGE PAVEMENT

S.L.M. 1156+22

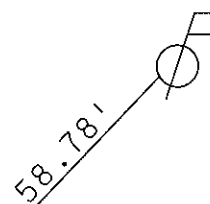


SET MAG NAIL
& WASHER
12-10-02
DCH

SET SHI
SE/S



S.R. 109

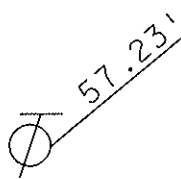


SET SHI
SW/S

Q PAVT.

8' N. of Pavt west

CO RD U



FD SHI
NE/S



Q. PVMT.

SET SHI
N/S

O.D.O.T. DISTRICT 2 SURVEY OFFICE

PERSONNEL _____

REFERENCE NO. 48

SHEET _____ OF _____

NOTES BARNHISEL

H.C. KUSZ

R.C. VAN DUSEN

DATE 8-03-92

WEATHER SUNNY

TEMP. +75°

ROUTE SP 109

COUNTY HENRY

TOWNSHIP LIBERTY

SECTION 24

T6 N R 7 E

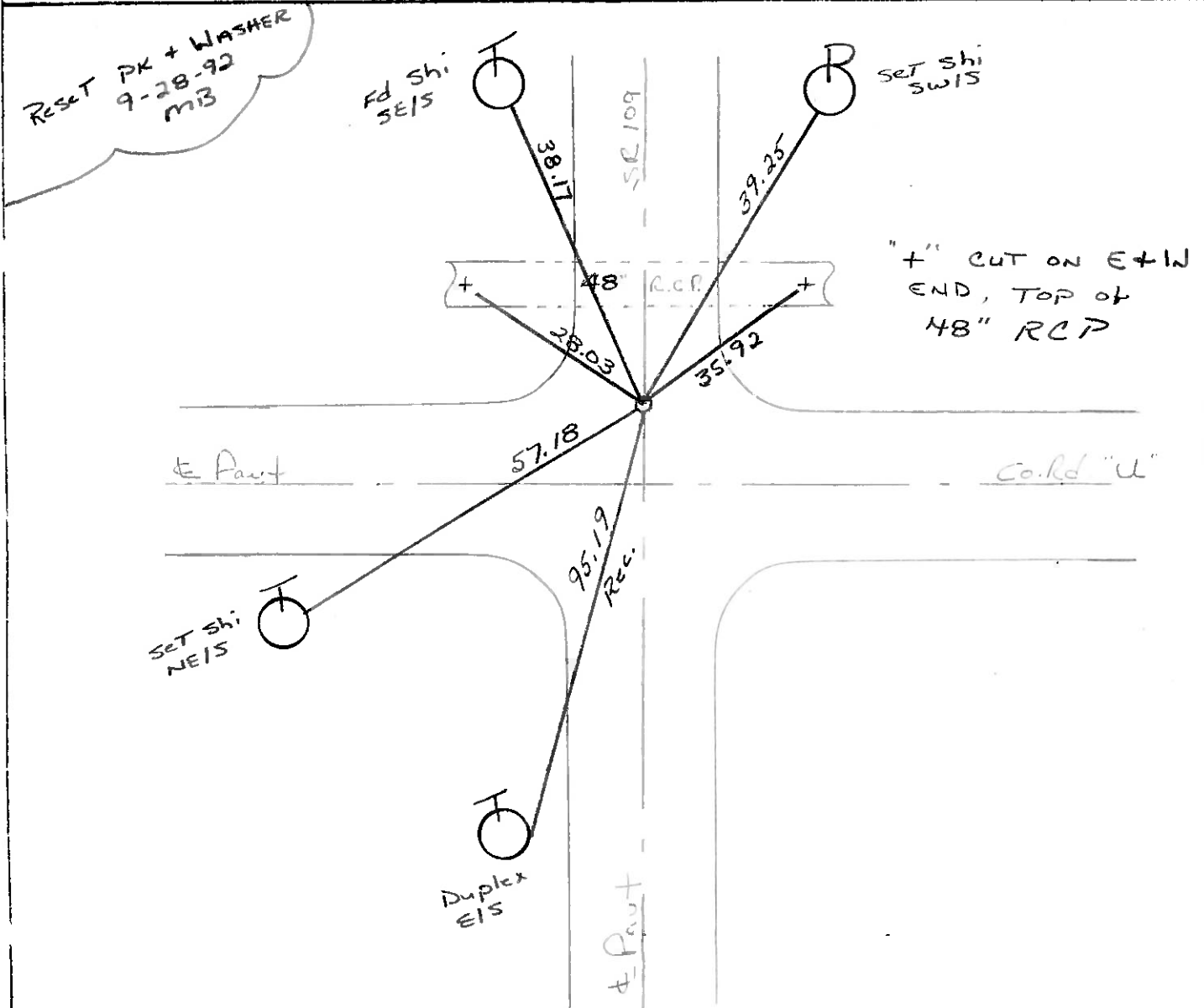
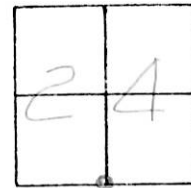
TYPE MONUMENT Sm RR Spk

ON SURFACE - ~~BELOW~~ yes

~~TO~~ - E PAV'T. - RIGHT yes

TO - EDGE PAVEMENT 8.0 N. of E West

S.L.M. 1156+22



Q.D.O.T. DISTRICT 2 SURVEY OFFICE

SHEET _____ OF _____

County Henry S.R. 109

Date 11-12-81

Township Liberty

Weather Clear

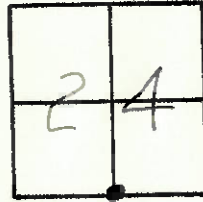
Section 24

Temp. +40°

T6N, R7E

Personnel No F F mad
Householder
Lookike

48

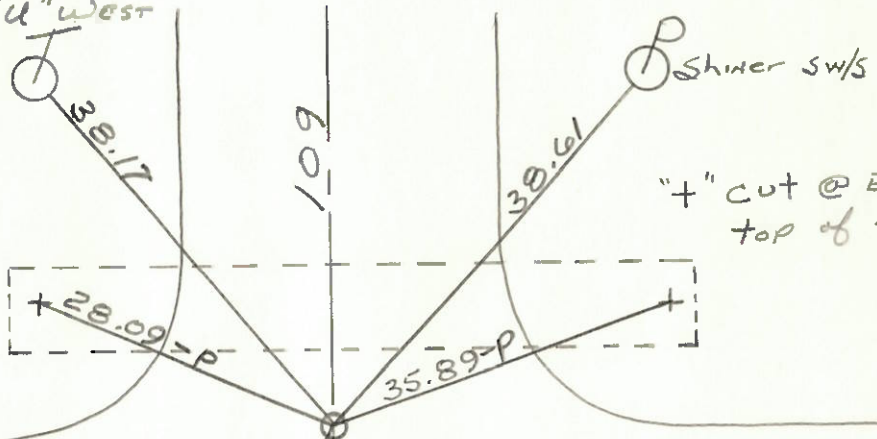


Fd 1" I.D. IRON PIPE, 5" Below Surface

Project STA. ± 1156+42

@ ϕ of PAUT SR 109
± 8' N. of ϕ PAUT Co. Rd. "U" West
@ N. Edge of PAUT,
Co. Rd. "U" EAST Shiner SE/S

RE-SET Small R.R. Spk
5-17-82
SW/H.



Henry Co.
& PAUT

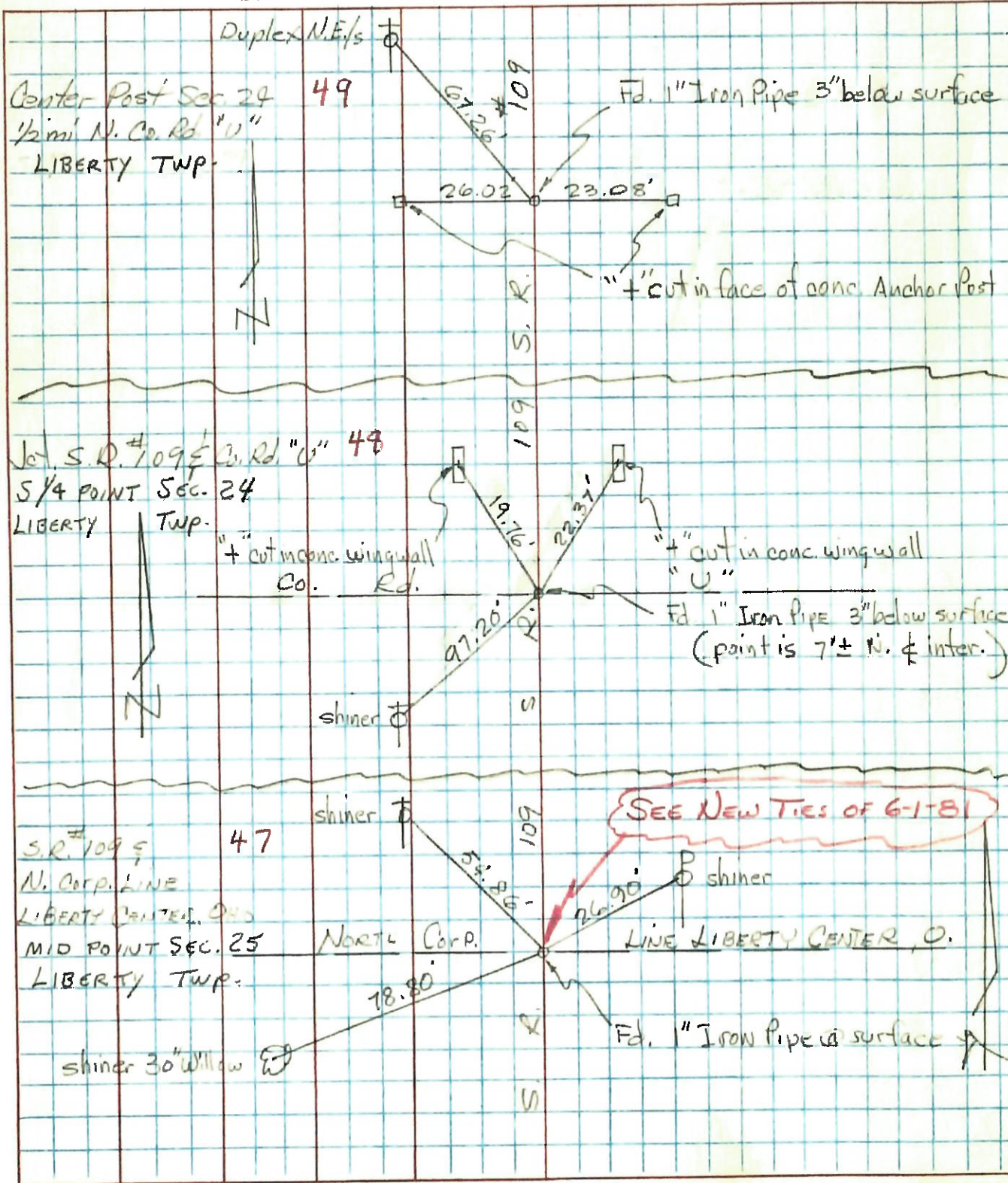
Rd. "U"

95.19
Duplex
E/S

S.R.
& PAUT 3

PERSONNEL	TITLE	PERSONNEL	TITLE	COUNTY	DATE	WEATHER	TEMP.
Tomsic				HENRY	DEC. 17-73		
Neusec				S. R. 109			
Vandy				SEC. LIBERTY TWP.			
Erangta							

DESCRIPTION _____ LEFT _____ CENTER LINE _____ RIGHT _____ JOB NO. _____



PERSONNEL	TITLE	PERSONNEL	TITLE	COUNTY	DATE
Red Beach				HENRY	June 1970
Newcomb					
Knafe				S. R. 109	WEATHER
Wise				SEC. Liberty Center, North	TEMP.

CONTROL POINTS

