

O.D.O.T. DISTRICT 2 SURVEY OFFICE (USE ONLY)

PERSONNEL

REFERENCE NO. 49

SHEET 19 OF 31

NOTES NIESE

DATE 3/5/21

ROUTE SR 109

H.C. RHOADES

WEATHER SUNNY

COUNTY HENRY

R.C. _____

TEMP. 30°

TOWNSHIP LIBERTY

DWG BY NIESE

PID PAVE TRAIN

SECTION 24

T 6 N R 7 E

TYPE MONUMENT R.R.SPIKE

~~ON SURFACE~~ - BELOW 3"

OFFSET \varnothing PAVEMENT ON LT : RT

11' TO LT EDGE PAVEMENT

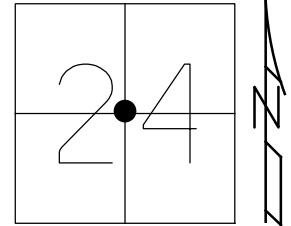
STATION: 1182+70.3

HORZ.DATUM: NAD83 2011

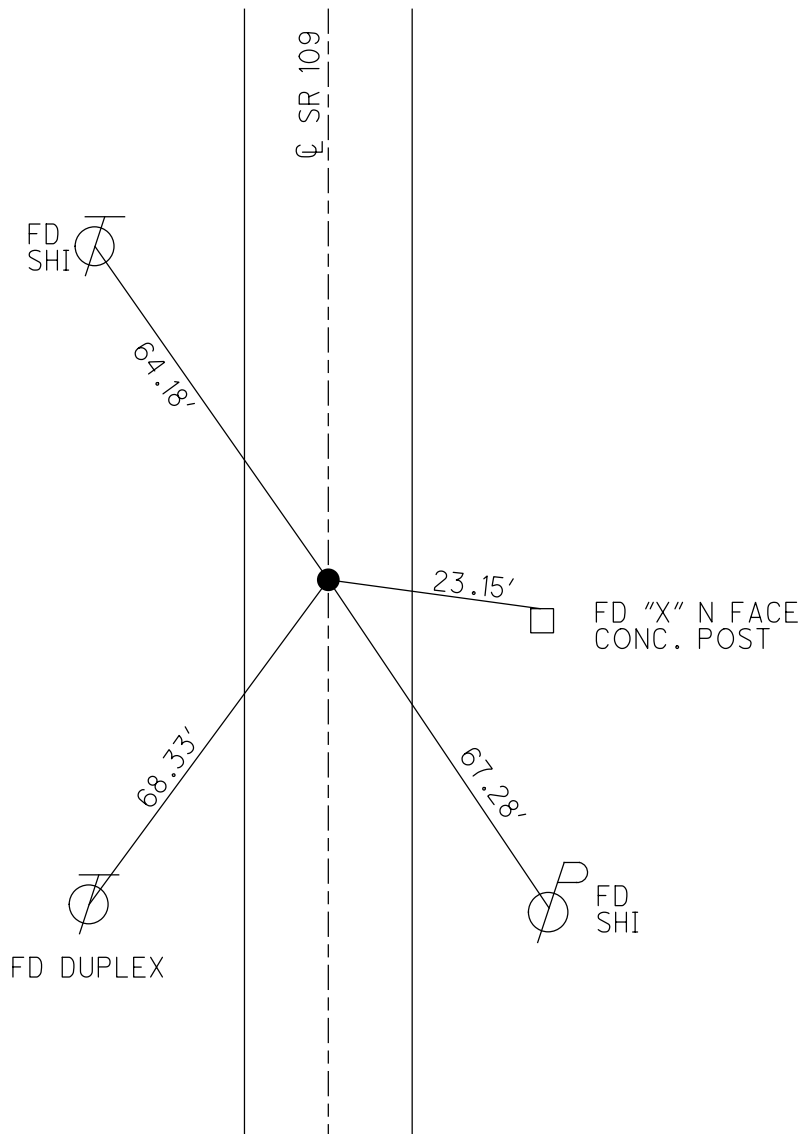
GEOID: NAVD88 2012A

GRID: NORTHING: 658726.916

EASTING: 1555010.762



RECORD:
 FD P.K./WASHER
 8/19/02, TMR
 SET MAG/WASHER
 12/10/02, DCH
 FD SM.R.R.SPIKE
 3.5" DOWN
 2/26/19, JLL
 FD R.R.SPIKE
 3" DOWN
 REF49
 6/10/20, JFO
 3/5/21,
 1/11/23, JMR



O.D.O.T. DISTRICT 2 SURVEY OFFICE (USE ONLY)

PERSONNEL

REFERENCE NO. 49

SHEET 19 OF 31

NOTES NIESE DATE 3/5/21
 H.C. RHOADES WEATHER SUNNY
 R.C. _____ TEMP. 30°

ROUTE SR 109
 COUNTY HENRY
 TOWNSHIP LIBERTY
 SECTION 24
 T 6 N R 7 E

DWG BY NIESE PID PAVE TRAIN

TYPE MONUMENT R.R.SPIKE

~~ON SURFACE~~ - BELOW 3"

OFFSET \varnothing PAVEMENT ON LT : RT

11' TO LT EDGE PAVEMENT

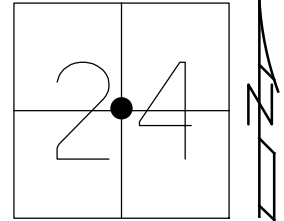
STATION: 1182+73

HORZ.DATUM: NAD83 2011

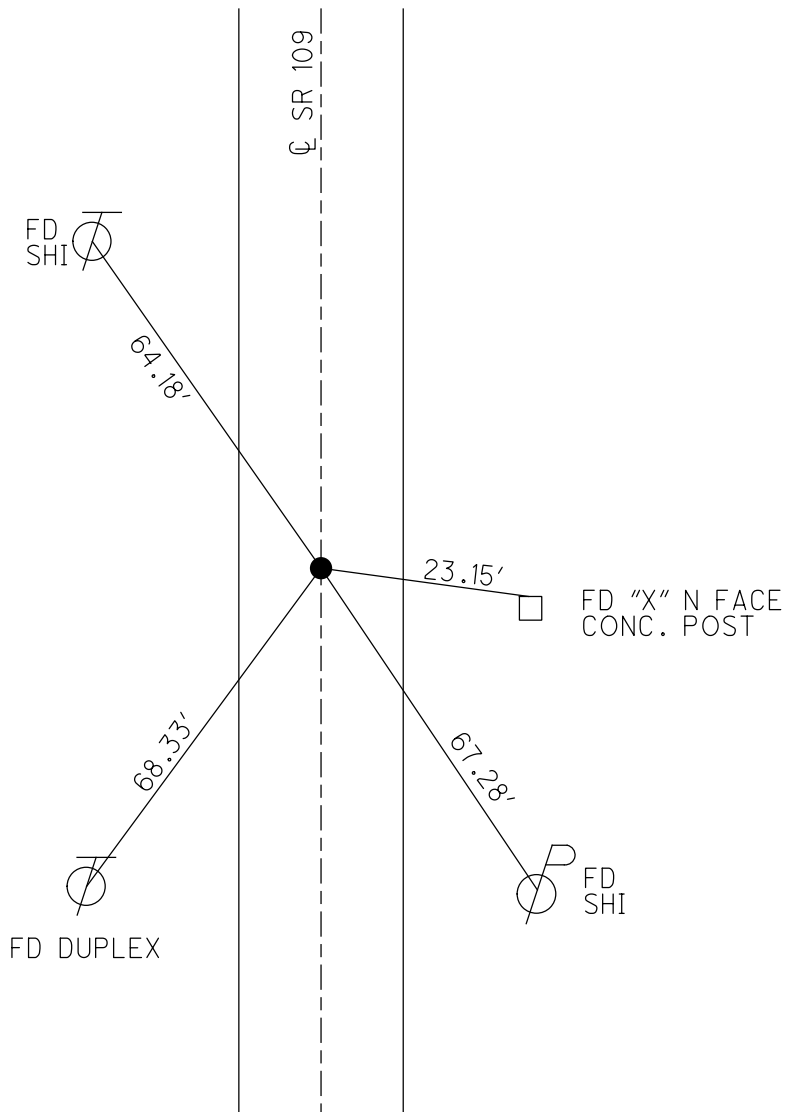
GEOID: NAVD88 2012A

GRID: NORTHING: 658726.916

EASTING: 1555010.762



RECORD:
 FD P.K./WASHER
 8/19/02, TMR
 SET MAG/WASHER
 12/10/02, DCH
 FD SM.R.R.SPIKE
 3.5" DOWN
 2/26/19, JLL
 FD R.R.SPIKE
 3" DOWN
 REF49
 6/10/20, JFO
 3/5/21, JMR



O.D.O.T. DISTRICT 2 SURVEY OFFICE

PERSONNEL

REFERENCE NO. 49

SHEET 17 OF 27

NOTES MICHALAK

DATE 8-19-02

ROUTE S.R. 109

H.C. ROUSOS

WEATHER RAIN

COUNTY HENRY

R.C. BEAUMONT

TEMP. 90

TOWNSHIP LIBERTY

SECTION 24

T 6 N R 7 E

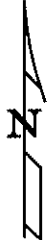
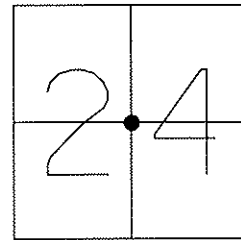
TYPE MONUMENT PK & WASHER

ON SURFACE - ~~BELOW~~ ON

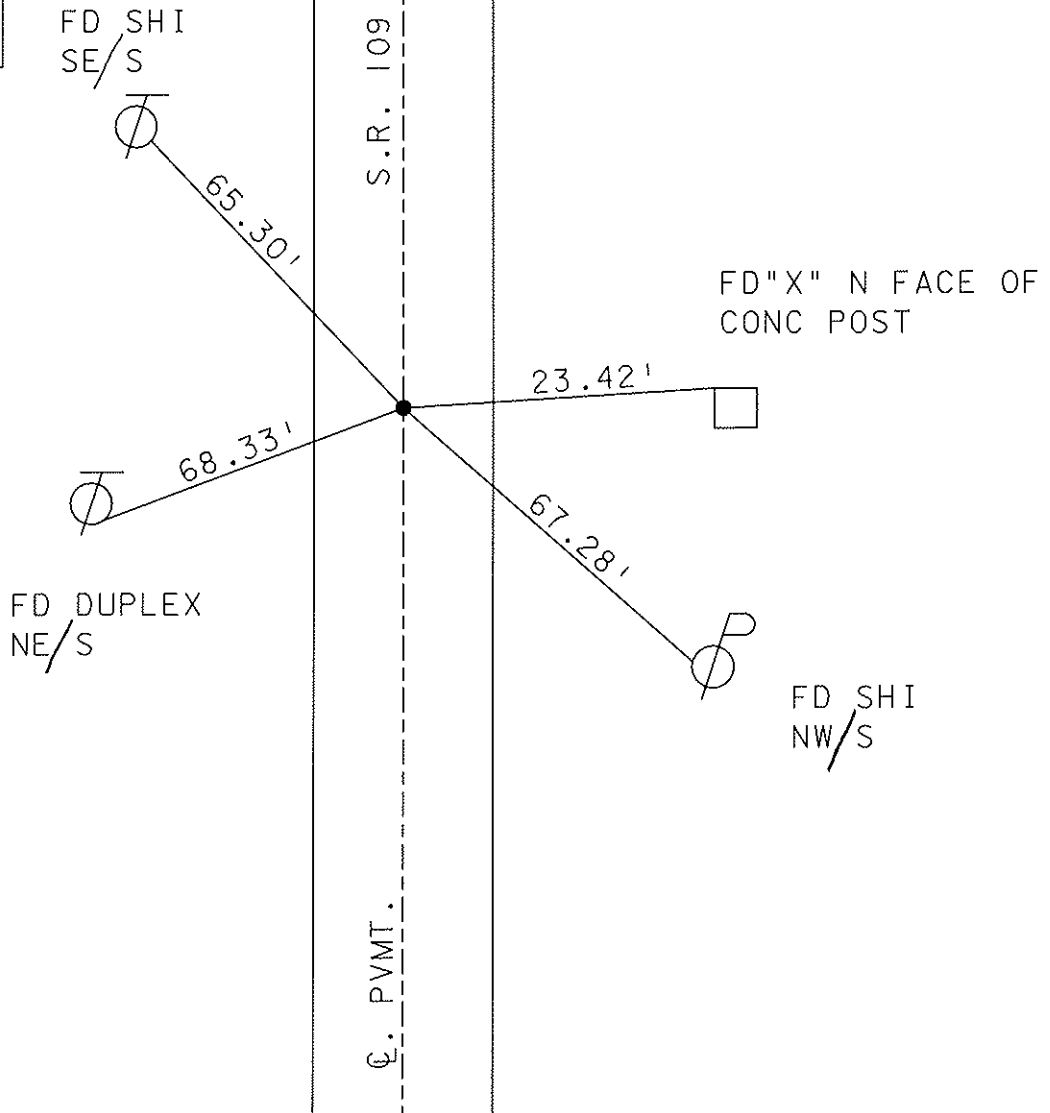
~~LEFT - Q PAV'T - RIGHT~~ ON

111' TO LT EDGE PAVEMENT

S.L.M. 1182+73



SET MAG NAIL
& WASHER
12-10-02
DCH



O.D.O.T. DISTRICT 2 SURVEY OFFICE

PERSONNEL

REFERENCE NO. 49

SHEET _____ OF _____

NOTES VAN DUSEN

H.C. BARNHISEL

DATE 8-12-92

ROUTE S.R. 109

R.C. KUSZ

WEATHER CLEAR

COUNTY HENRY

TEMP. +75° F

TOWNSHIP LIBERTY

SECTION 24

T 6 N R 7 E

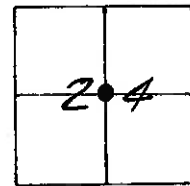
TYPE MONUMENT PK & WASHER

ON SURFACE - ~~BELOW~~ YES

LEFT- & PAV'T. - RIGHT YES

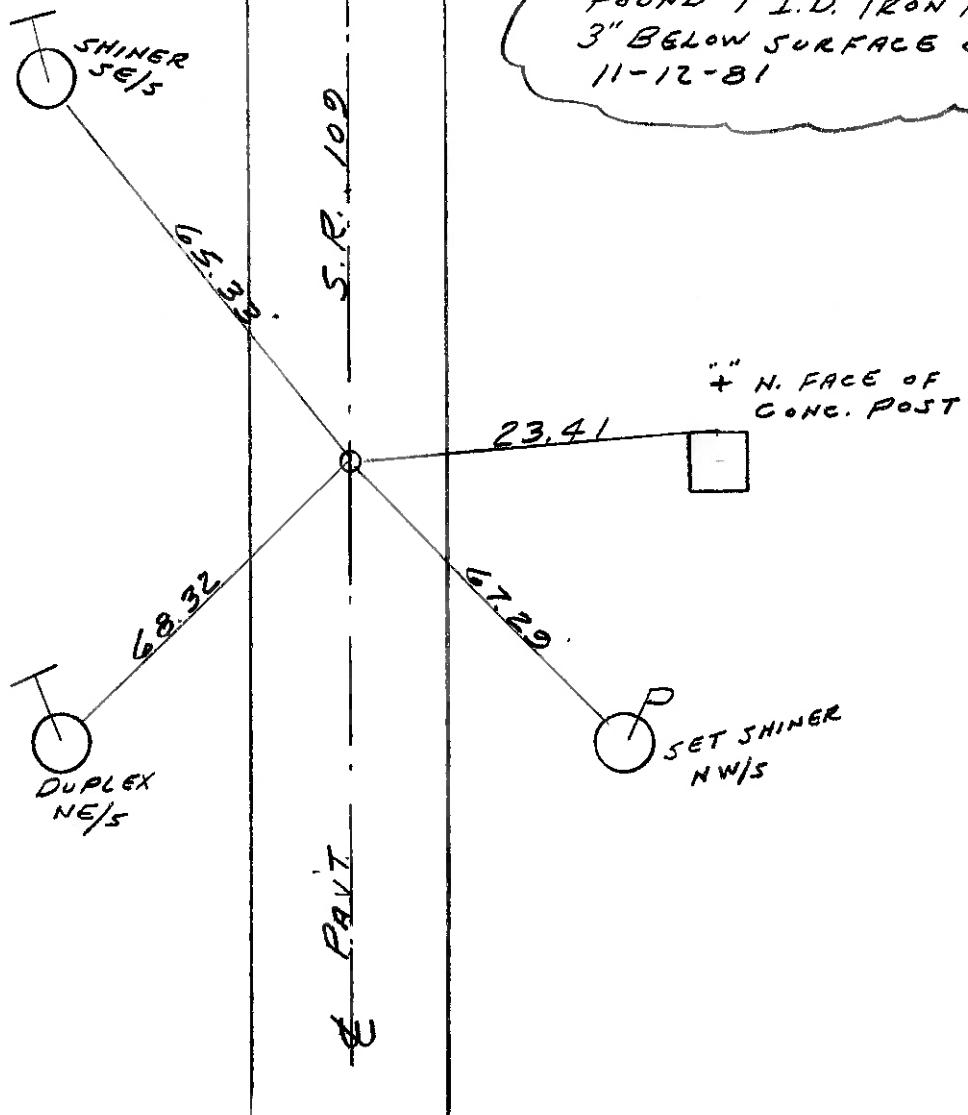
10.6 TO RT. EDGE PAVEMENT

S.L.M. 1182 +73



SET PK & WASHER
9-28-92

RECORD
FOUND 1" I.D. IRON PIPE,
3" BELOW SURFACE ON
11-12-81



County Henry S.R. 109

Date 11-12-81

Township Liberty

Weather Clear

Section 24

Temp. +40°

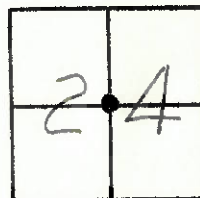
T6N, R7E

Personnel HOFFMAN

Householder

Loehrke

49



Fd. 1" I. D. IRON PIPE, 3" Below Surface

Project Sta ± 1182+93

0.40 E. of & Post

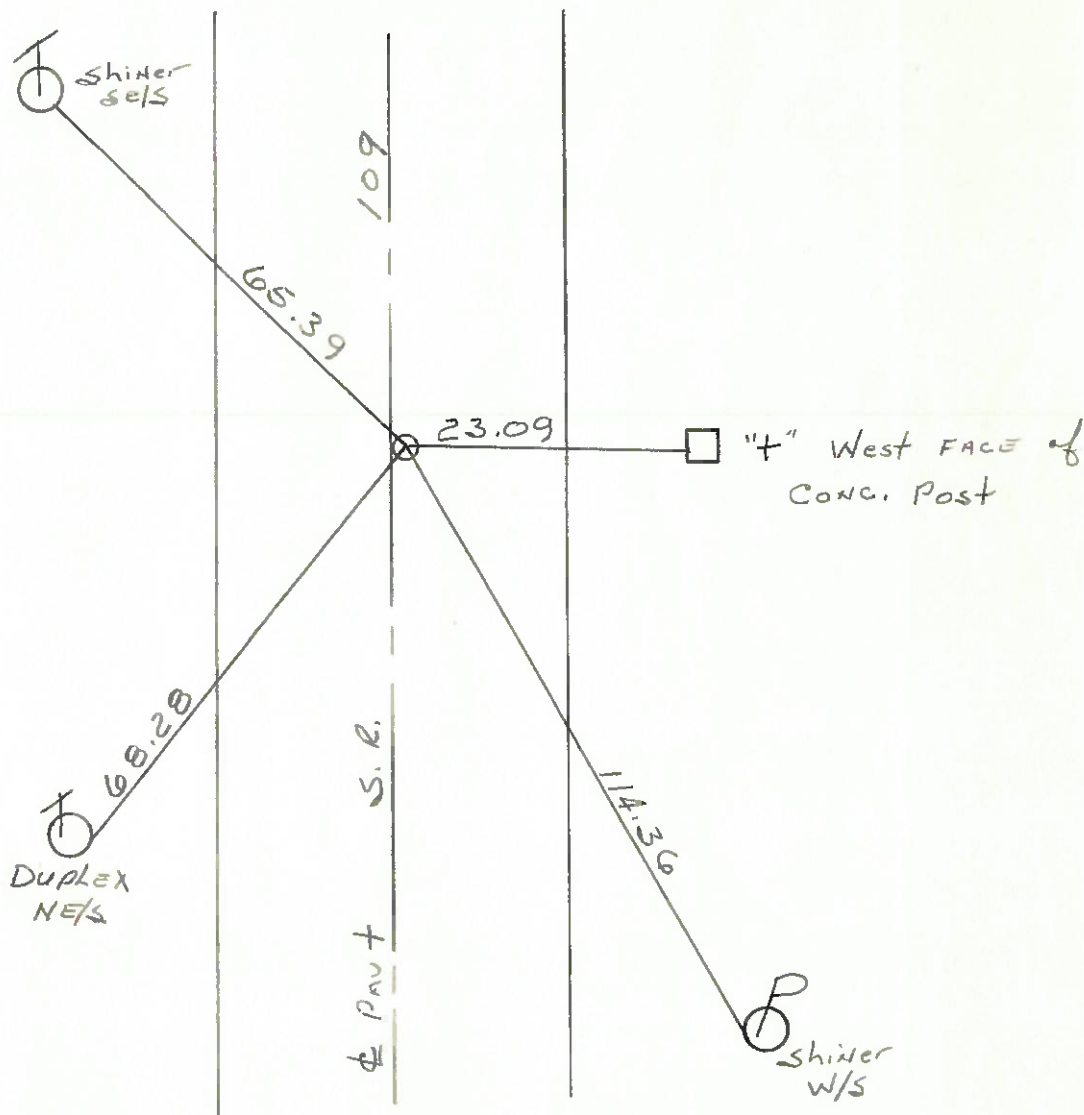
10.0 to W.E.P.

8.5 to E.E.P.

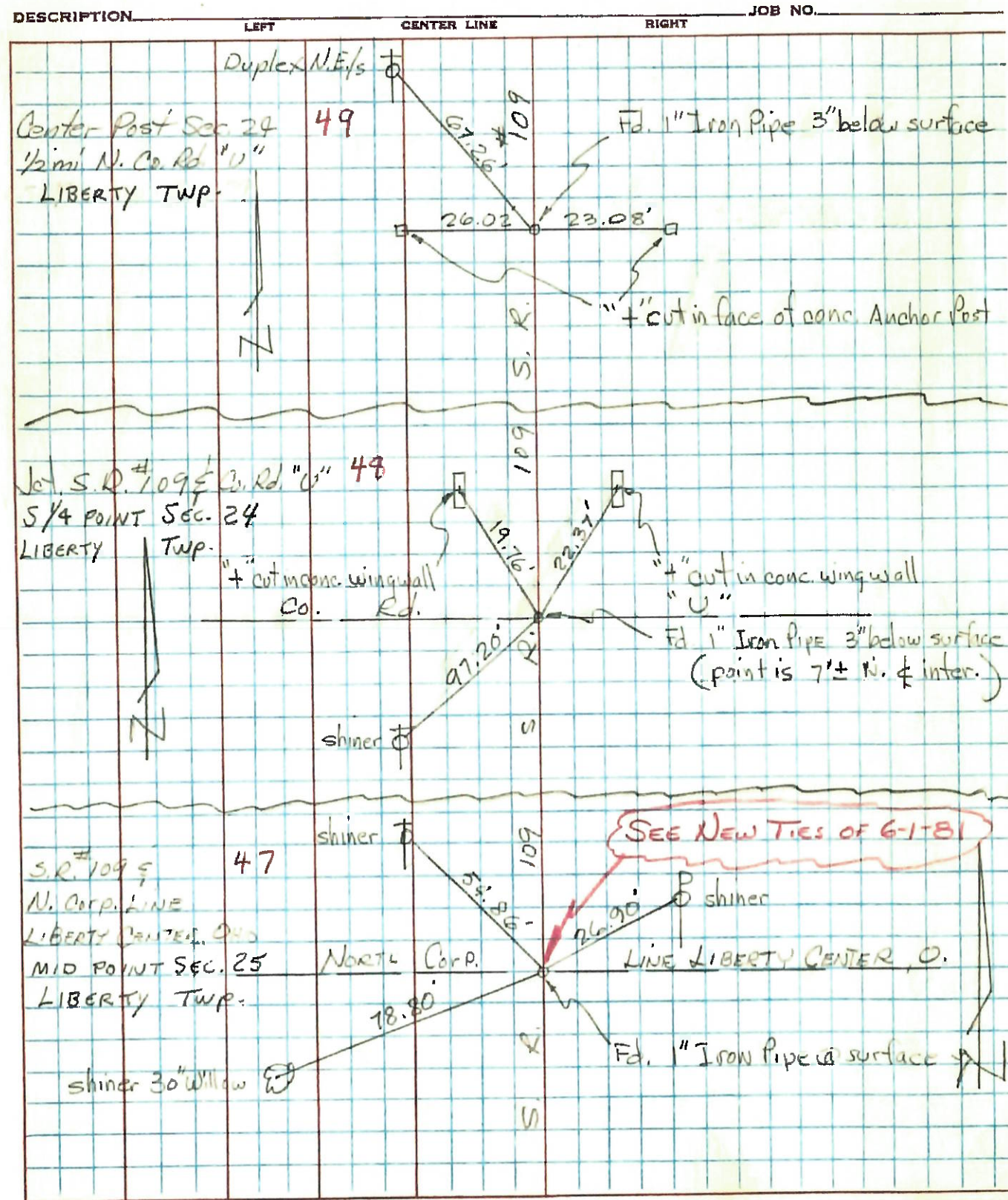
RE-SET SMALL R.R. SPIKE

5.17-82

S.W.H.

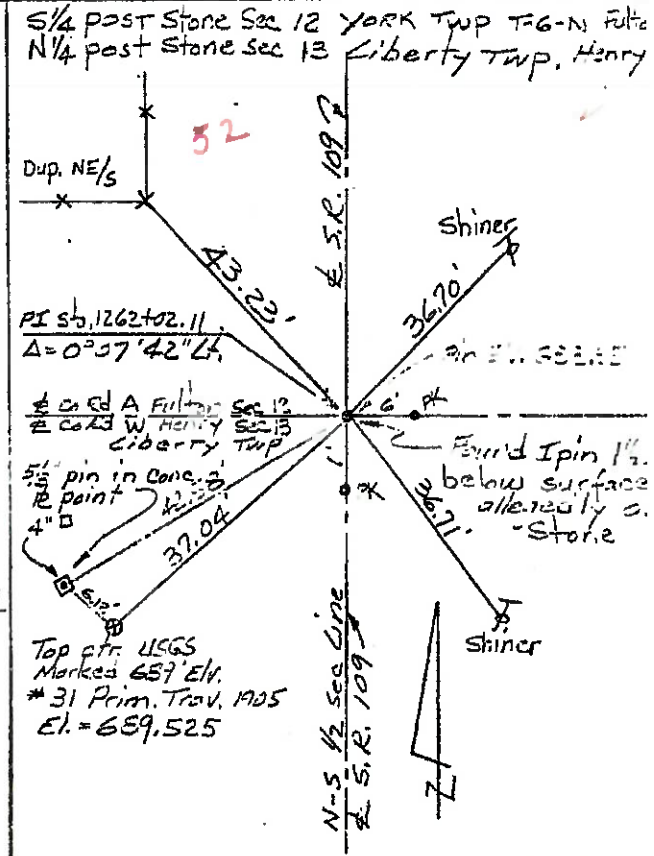
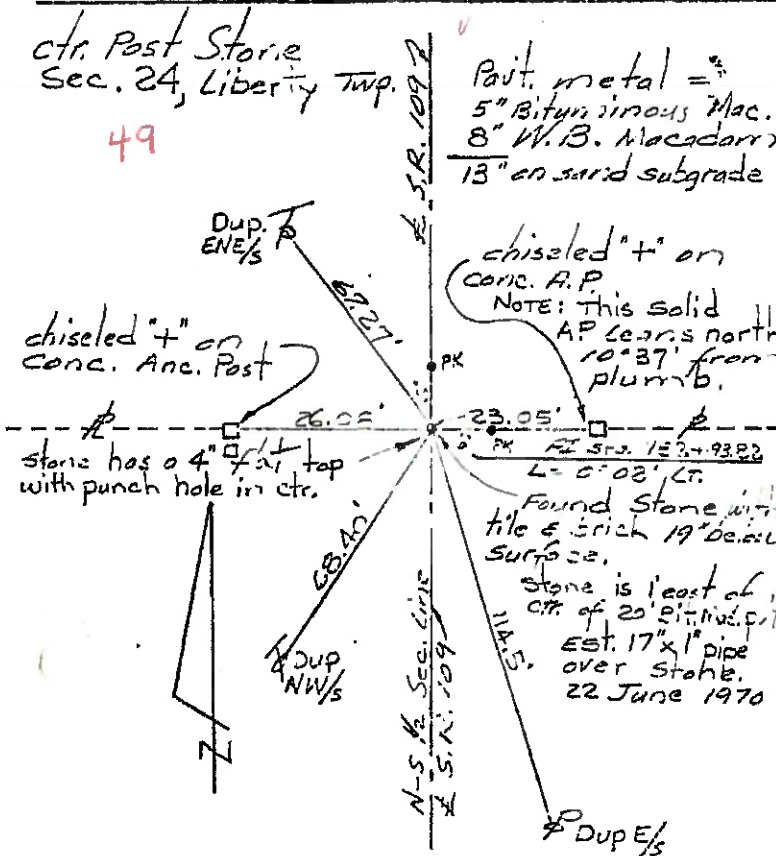
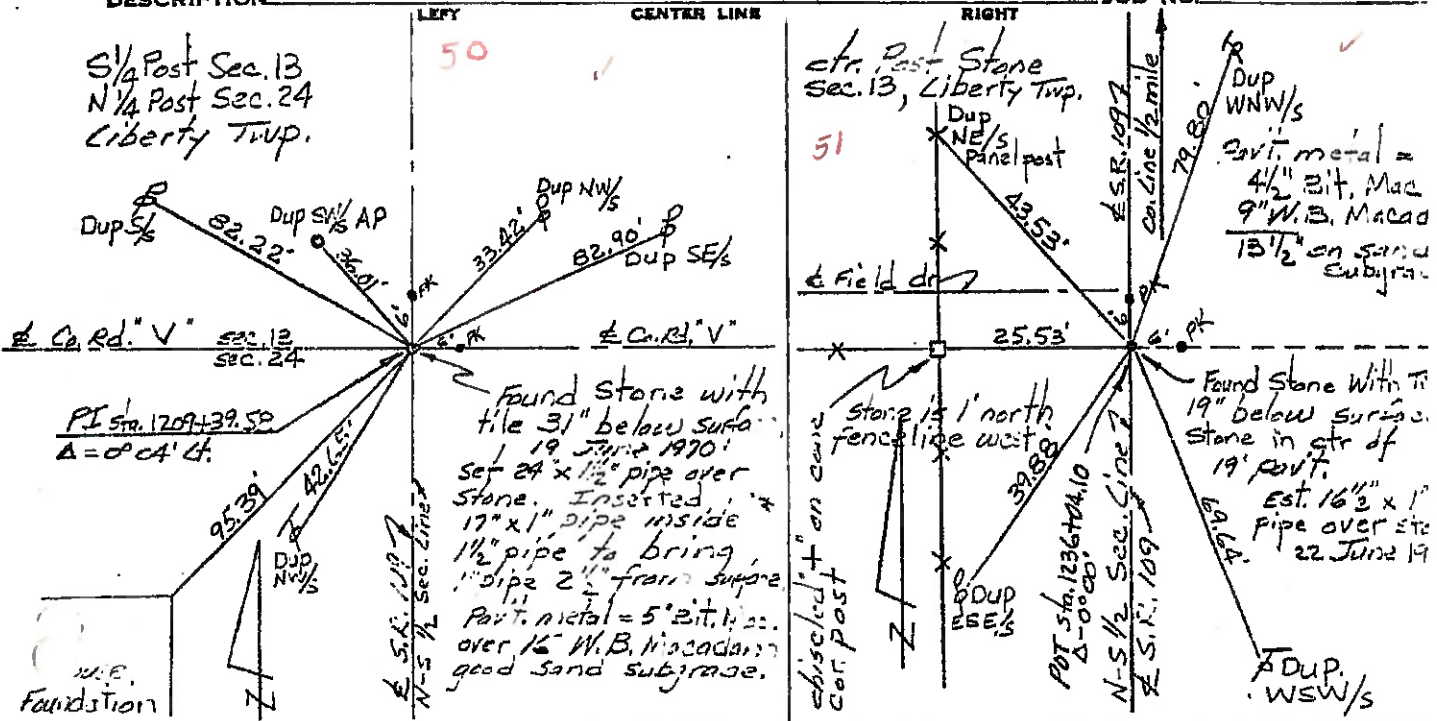


PERSONNEL	TITLE	PERSONNEL	TITLE	COUNTY	DATE	WEATHER	TEMP.
Tomsic				HENRY	DEC. 17-73		
Neusec				S. R. 109			
Vandy				SEC. LIBERTY TWP.			
Granata							



PERSONNEL TITLE PERSONNEL TITLE COUNTY HENRY DATE June 1970
Red Beach _____
Newcomb _____
Knappe _____
Wise _____
 S. R. 109 WEATHER _____
 SEC. Liberty Twp TEMP. _____

CONTROL POINTS



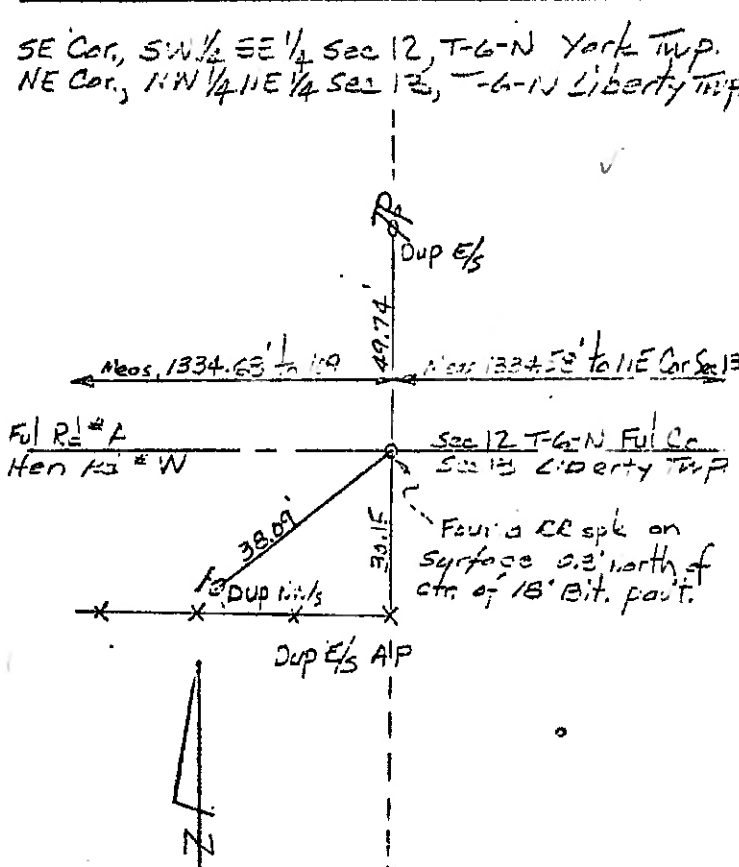
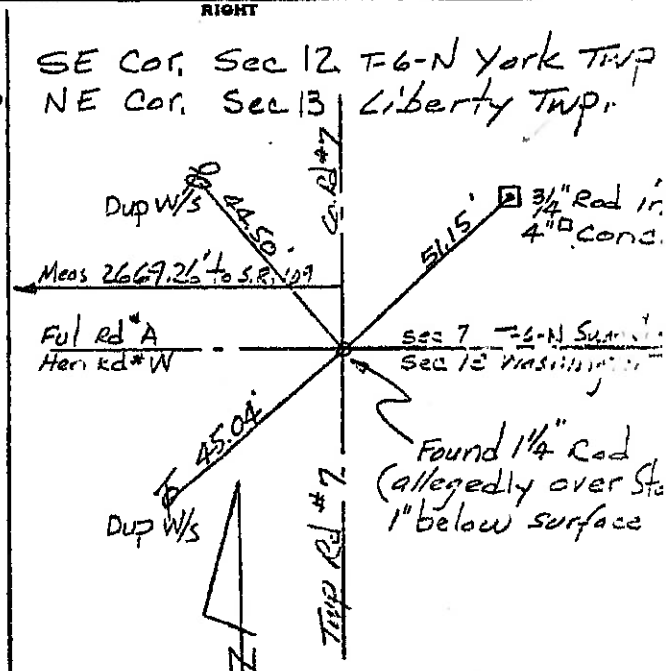
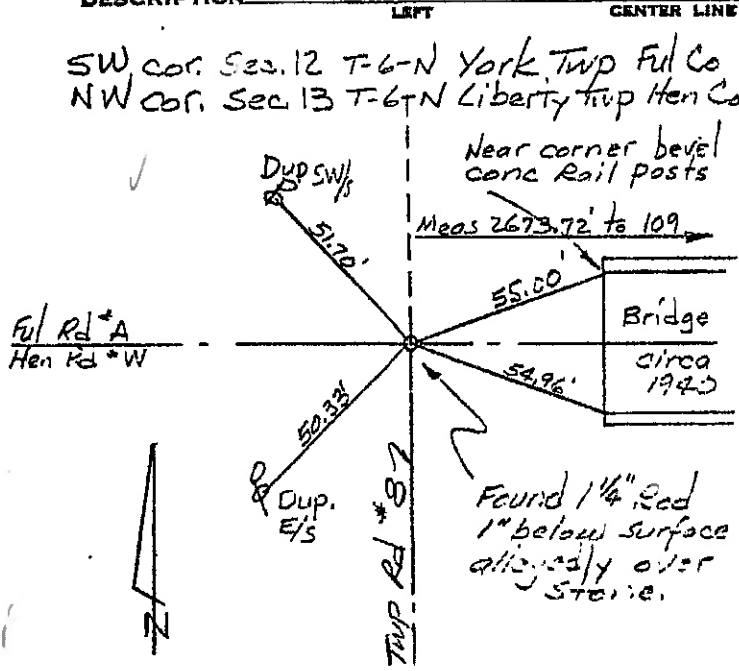
PERSONNEL	TITLE	PERSONNEL	TITLE
Red Beach			
Newcomb			
Knapp			
Lilise			

COUNTY HENRY - FULTON DATE JULY 1970

S. R. 109 WEATHER _____

SEC. 12 & 13 T-6-N TEMP. _____

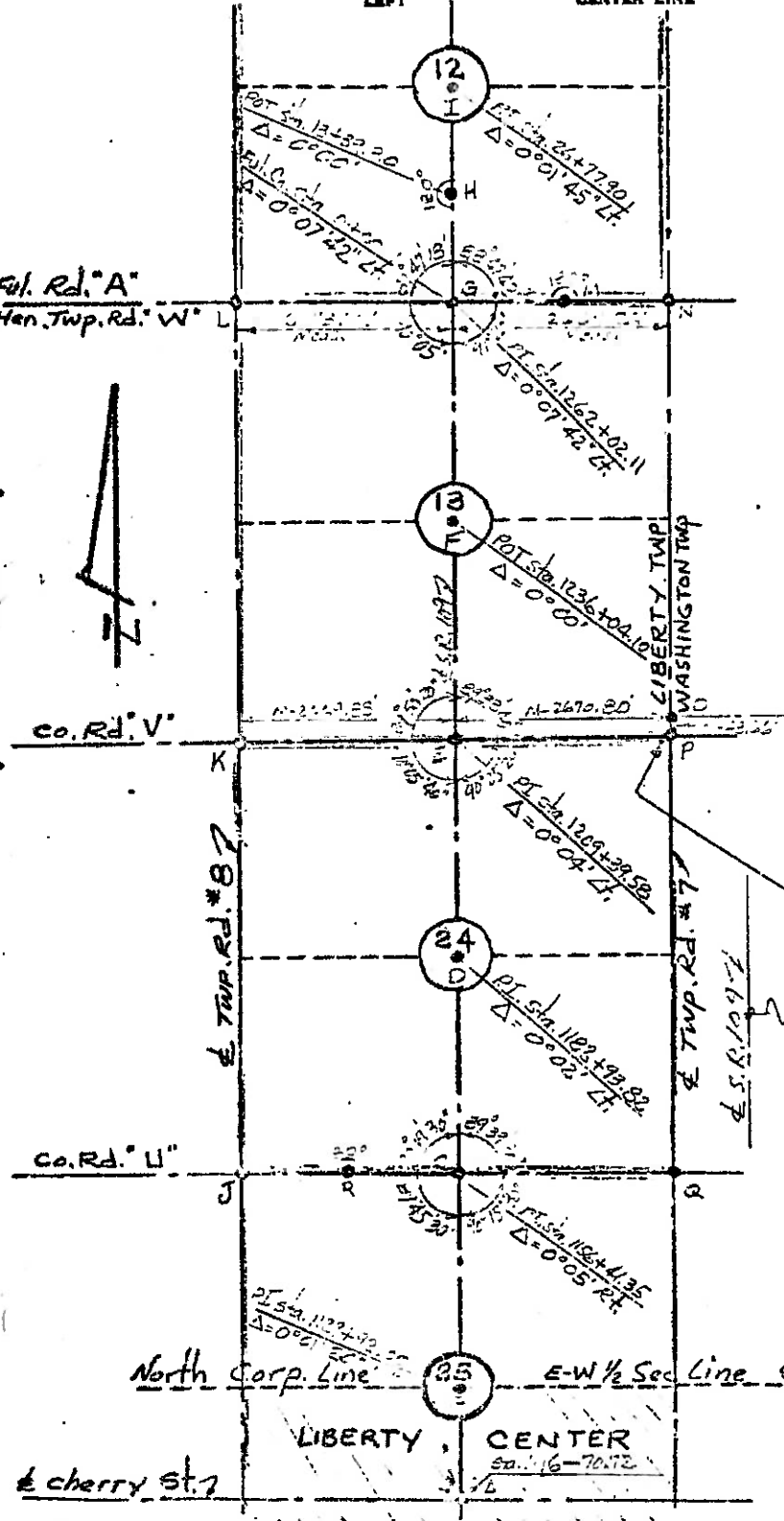
DESCRIPTION CENTRO. POINTS YORK - LIBERTY JOB NO. _____



PERSONNEL	TITLE	PERSONNEL	TITLE	COUNTY	DATE	WEATHER
Red Beach				HENRY	June-July 1977	
Neevcomib				S. R.	109	
Knape				SEC. LIBERTY CENTER NORTH		TEMP.
Wise						

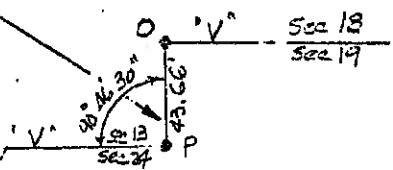
DESCRIPTION _____ ALIGNMENT & CONTROLS _____ JOB NO. _____

52
51
49
47



LEGEND

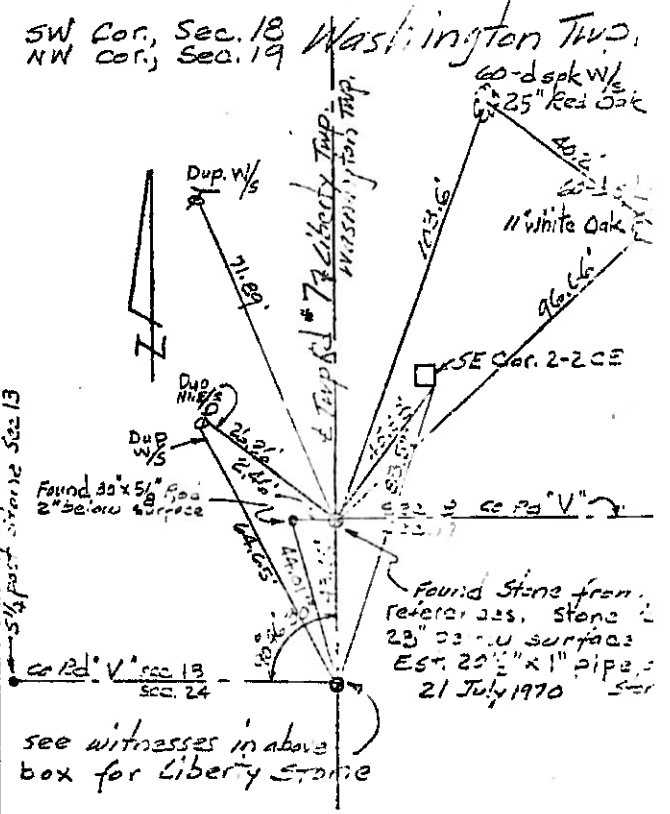
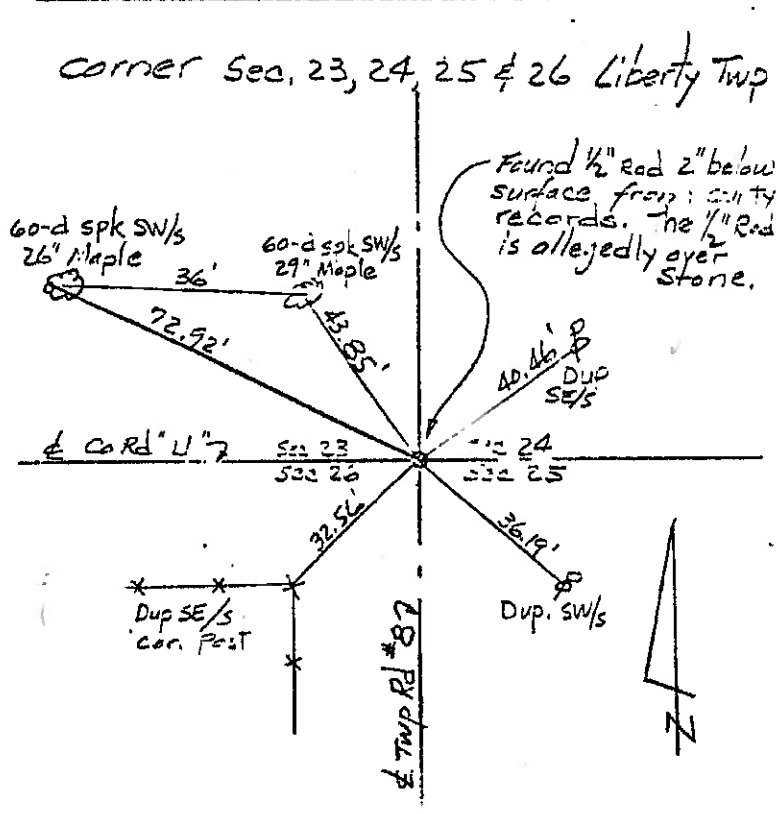
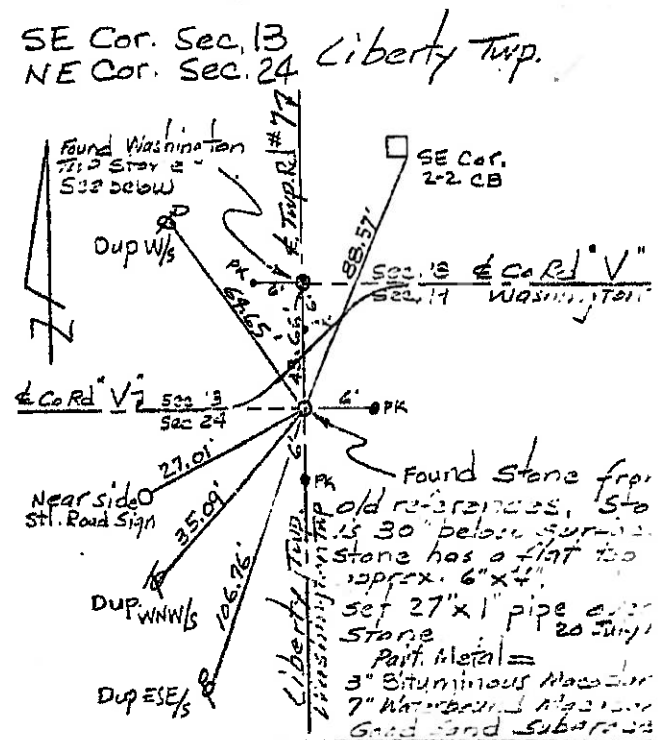
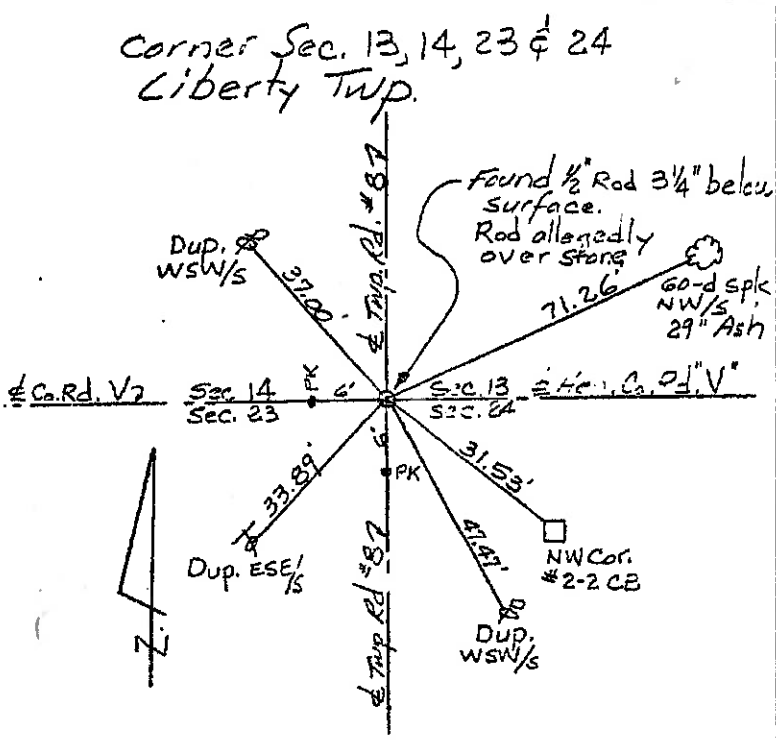
- A - Found recorded "t" in base conc. Est. 1/2" pipe over "t"
- B - Reconstituted CHACKEN'S SAN. Vol. 6/14, 1952 H.S. Co. Engr. Est. 23"x1" pipe
- C, D, E, F, H, I - Found stones from old records. Est. 1" pipes over stones.
- G - Found recorded I Pin. I. Pin allegedly over Stone.
- J, K, L - Found recorded I Rods I Rods allegedly over stones.
- M - Found RR spk on surface from county records. RR spk is 1894, 68 east of the S.R. 109 (Neas.)
- N - Found recorded I Rod I Rod allegedly over Stone.
- O, P - Found stones from old references. Est. 1" pipes over stones.
- Q - Found I Rod from county records. Slipped 1/2" pipe over Rod
- R - Found I pipe on surface I pipe is allegedly over Stone



North Corp Line _____ E-W 1/2 Sec Line SLM 21.40
LIBERTY CENTER
Sta. 16-70.72

PERSONNEL	TITLE	PERSONNEL	TITLE	COUNTY	DATE
Red Beach				HENRY	JULY 1974
Newman				S. R. 109	WEATHER
Knape				SEC. Liberty TWP.	TEMP.
Wise					

DESCRIPTION CONTROL POINTS JOB NO. _____



see witnesses in above box for Liberty Stone