

O.D.O.T. DISTRICT 2 SURVEY OFFICE (USE ONLY)

PERSONNEL

REFERENCE NO. 51

SHEET 22 OF 31

NOTES NIESE DATE 3/5/21

ROUTE SR 109

H.C. RHOADES WEATHER SUNNY

COUNTY HENRY

R.C. _____ TEMP. 30°

TOWNSHIP LIBERTY

SECTION 13

DWG BY NIESE PID PAVE TRAIN

T 6 N R 7 E

TYPE MONUMENT MAG/WASHER

ON SURFACE - ~~BELOW~~ ON

OFFSET \odot PAVEMENT 0.5' LT : RT

11' TO LT EDGE PAVEMENT

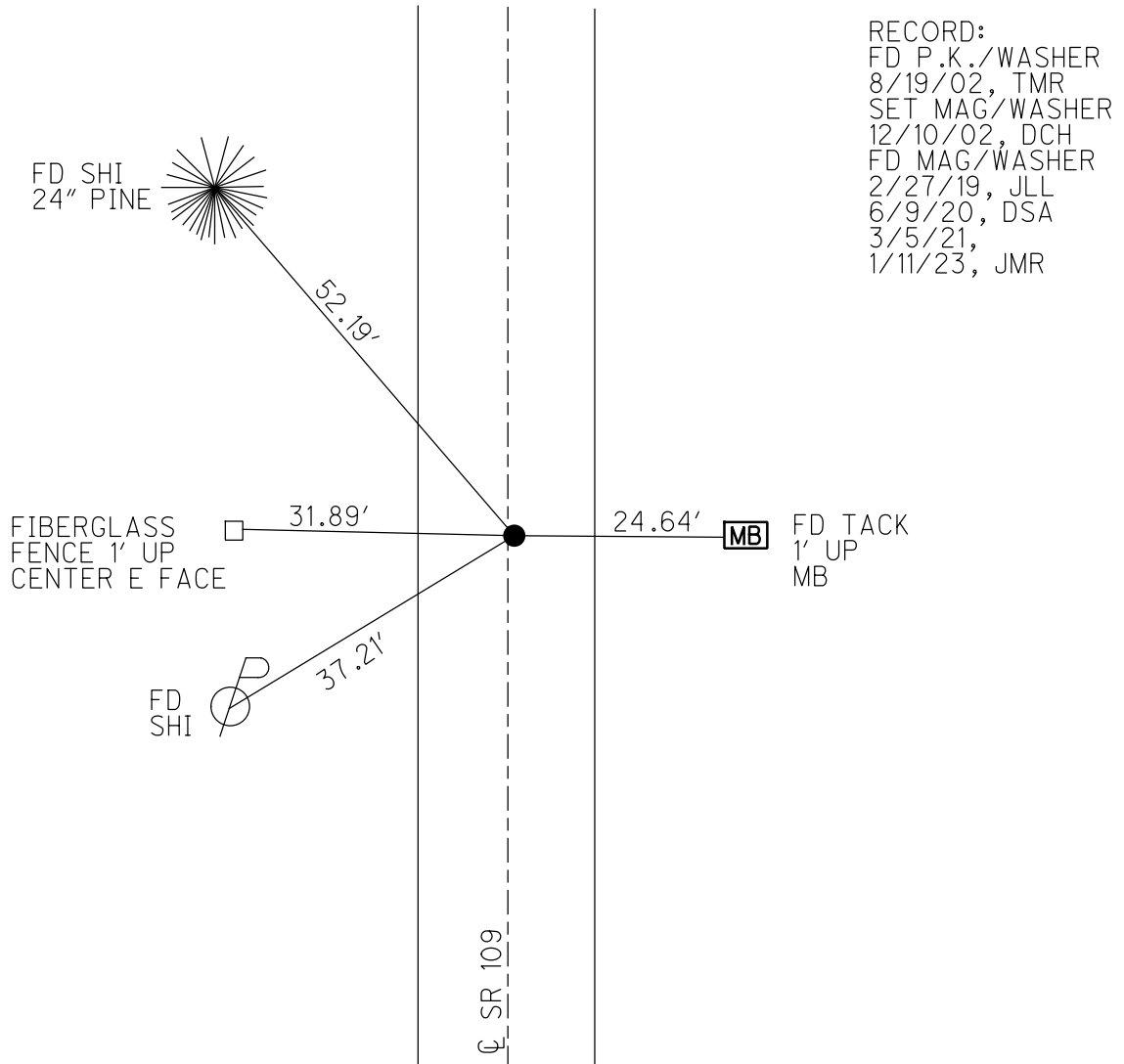
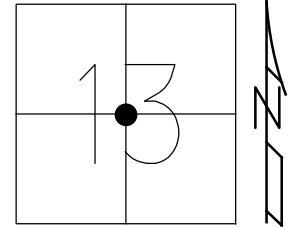
STATION: 1235+79.2

HORZ.DATUM: NAD83 2011

GEOID: NAVD88 2012A

GRID: NORTHING: 664035.789

EASTING: 1555108.443



O.D.O.T. DISTRICT 2 SURVEY OFFICE (USE ONLY)

PERSONNEL

REFERENCE NO. 51

SHEET 22 OF 31

NOTES NIESE

DATE 3/5/21

ROUTE SR 109

H.C. RHOADES

WEATHER SUNNY

COUNTY HENRY

R.C. _____

TEMP. 30°

TOWNSHIP LIBERTY

DWG BY NIESE

PID PAVE TRAIN

SECTION 13

T 6 N R 7 E

TYPE MONUMENT MAG/WASHER

ON SURFACE - ~~BELOW~~ ON

OFFSET 11' Q PAVEMENT 0.5' LT : RT

11' TO LT EDGE PAVEMENT

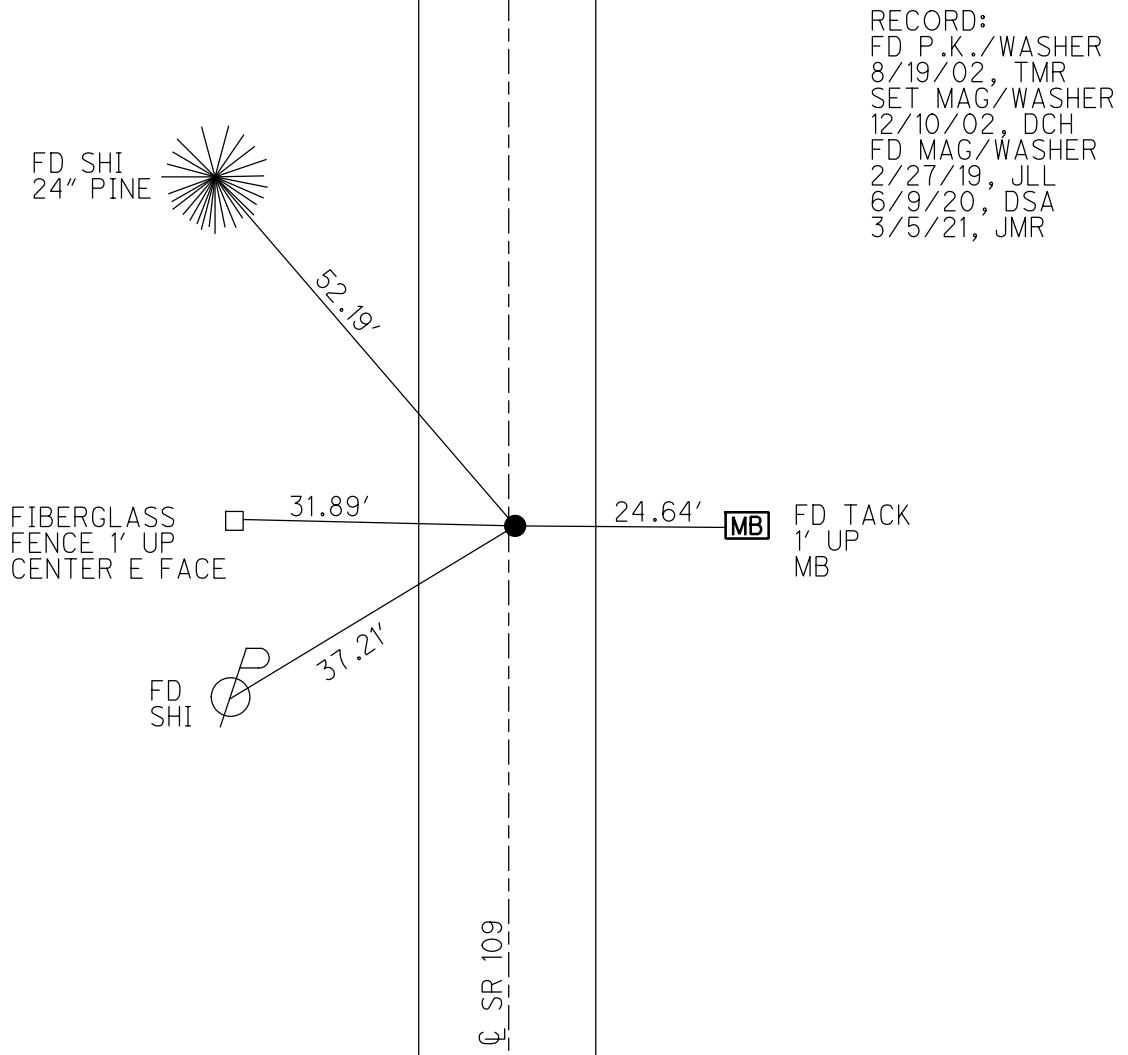
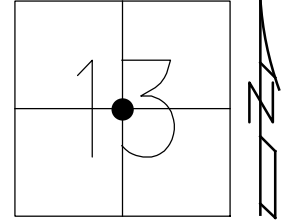
STATION: 1235+82

HORZ.DATUM: NAD83 2011

GEOID: NAVD88 2012A

GRID: NORTHING: 664035.789

EASTING: 1555108.443



O.D.O.T. DISTRICT 2 SURVEY OFFICE

PERSONNEL

REFERENCE NO. 51

SHEET 20 OF 27

NOTES MICHALAK

DATE 8-19-02

ROUTE S.R. 109

H.C. ROUSOS

WEATHER RAIN

COUNTY HENRY

R.C. BEAUMONT

TEMP. 90

TOWNSHIP LIBERTY

SECTION 13

T 6 N R 7 E

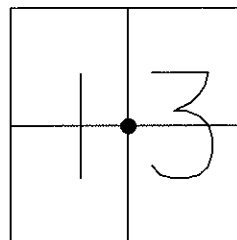
TYPE MONUMENT PK & WASHER

ON SURFACE - ~~BELOW~~ ON

~~LEFT~~ - Q PAV'T - ~~RIGHT~~ ON

11' TO LT EDGE PAVEMENT

S.L.M. 1235+82

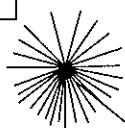


SET MAG NAIL
& WASHER
12-10-02
DCH

SET SHI
PINE

FIBERGLASS
FENCE 1' UP
CENTER E FACE

FD SHI
NE/S



52.70'

31.95'

37.22'

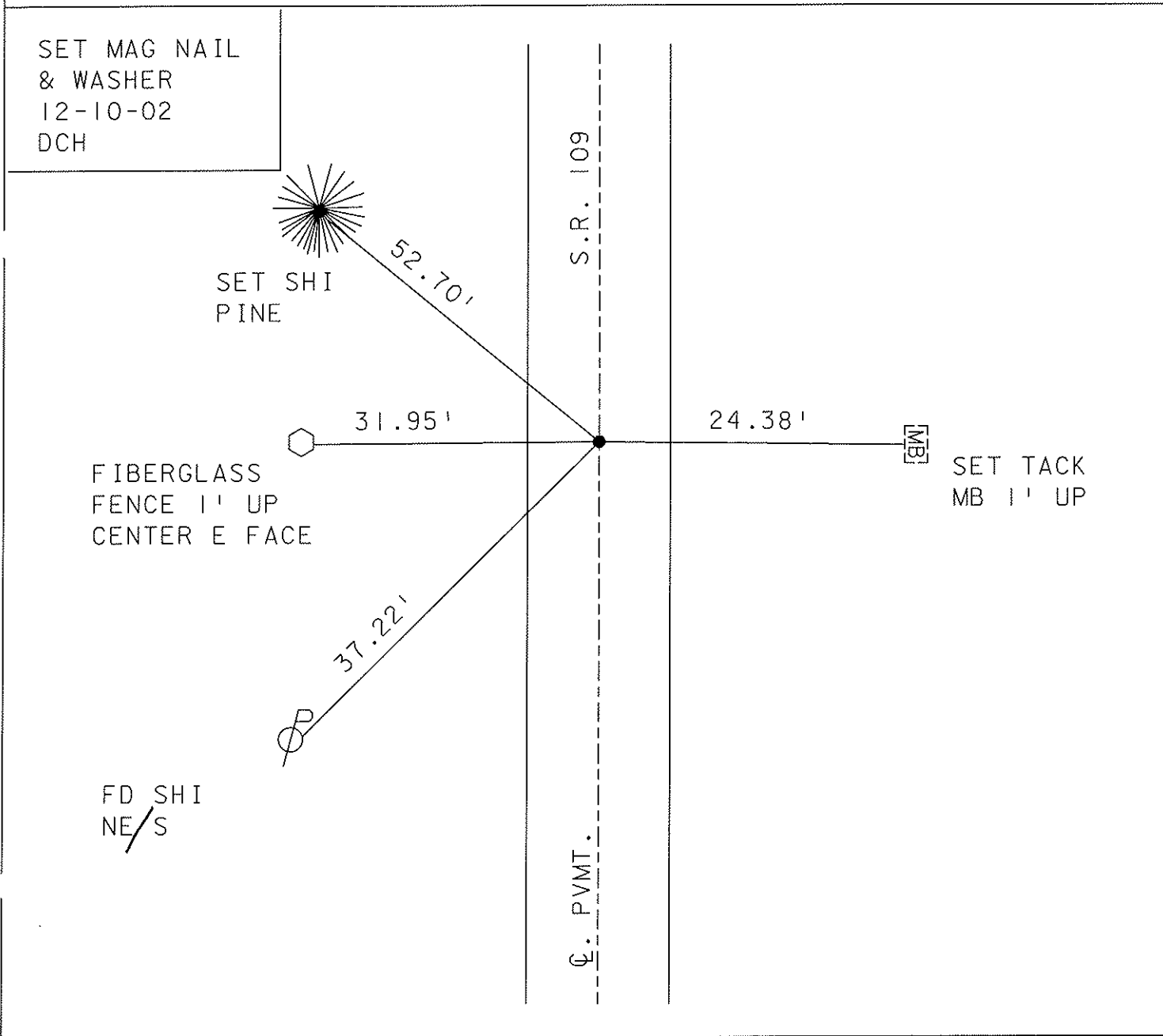
S.R. 109

Q. PVMT.

24.38'



SET TACK
MB 1' UP



O.D.O.T. DISTRICT 2 SURVEY OFFICE

PERSONNEL

REFERENCE NO. 51

SHEET OF

NOTES VAN DUSEN

H.C. BARNHISEL

R.C. KUJZ

DATE 8-12-92

WEATHER CLEAR

TEMP. +75°F

ROUTE S.R. 109

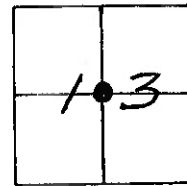
COUNTY HENRY

TOWNSHIP LIBERTY

SECTION 13

T&N R T E

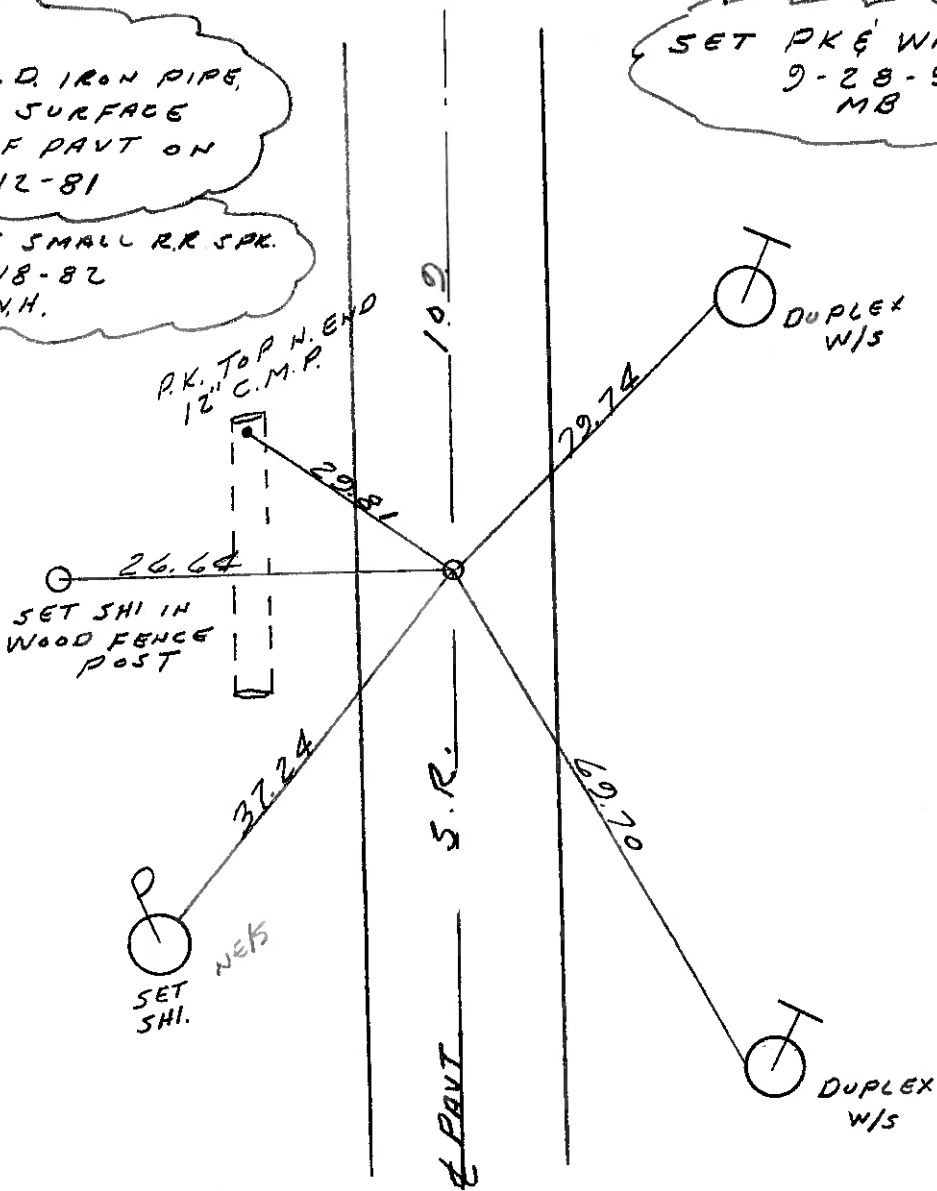
TYPE MONUMENT PK & WASHER
 ON SURFACE - BELOW YES
 LEFT - ☉ PAV'T. - RIGHT YES
10.9 TO LT. EDGE PAVEMENT
 S.L.M. 1235+82



"RECORD"
 FOUND 1" I.D. IRON PIPE,
 2 1/2" BELOW SURFACE
 @ ☉ OF PAVT ON
 11-12-81

RE-SET SMALL R.R. SPK.
 5-18-82
 S.W.H.

SET PK & WASHER
 9-28-92
 MB



Q.D.O.T. DISTRICT 2 SURVEY OFFICE

SHEET _____ OF _____

County Henry S.R. 109

Date 11-12-81

Township Liberty

Weather clear

Section 13

Temp. +48°

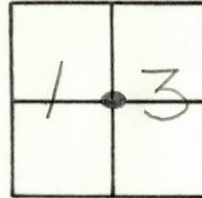
T6N, R7E

Personnel Hoffman

Householder

Loehrke

51



Fd. 1" I.D. IRON PIPE, 2 1/2" Below Surface Project s/a ± 1236 +04

@ & of PAUT.

9.0 to E.E.P.

9.2 to W.E.P.

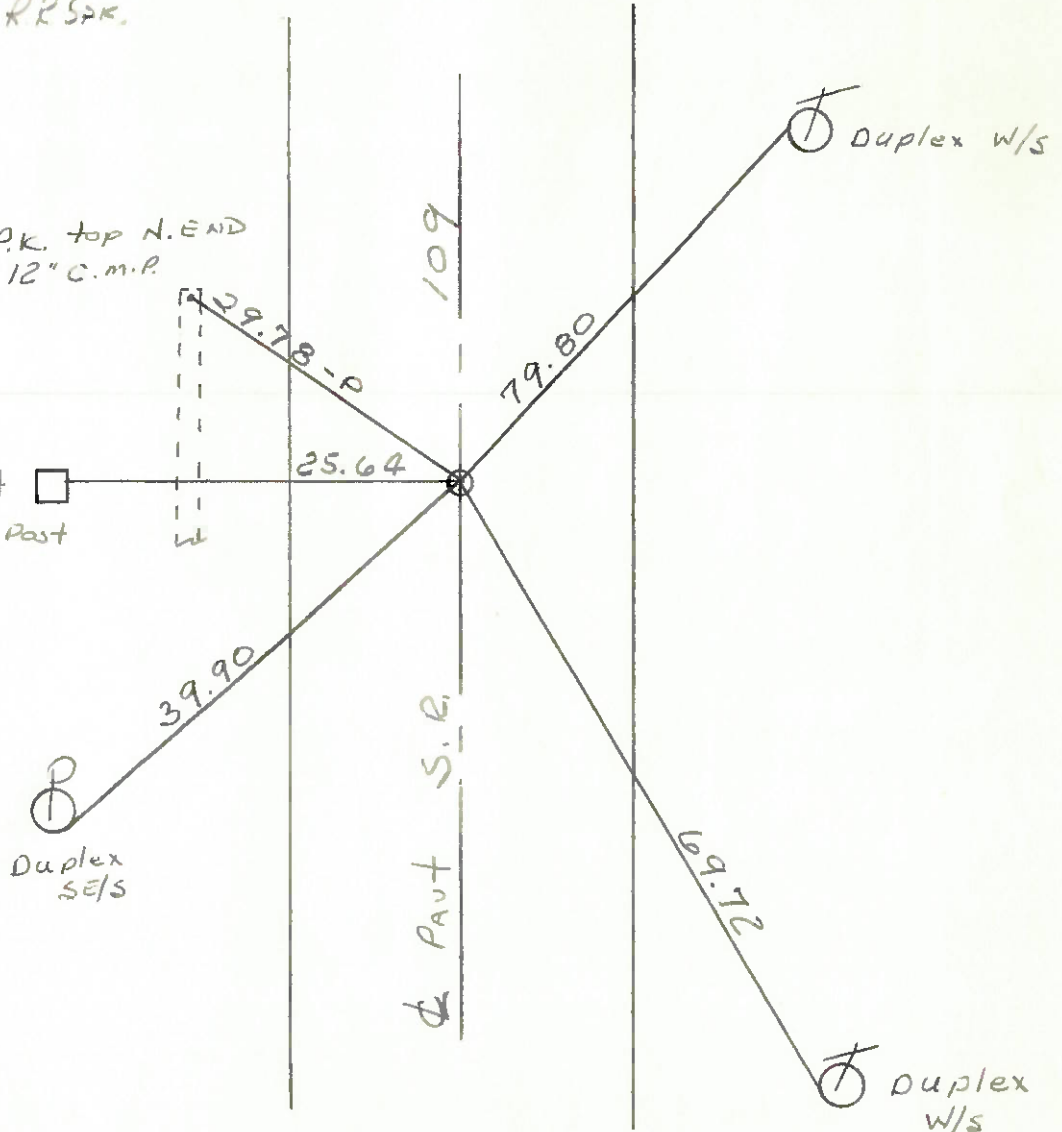
RE-SET SMALL R.R. SPK.

5-18-82

S.W.M.

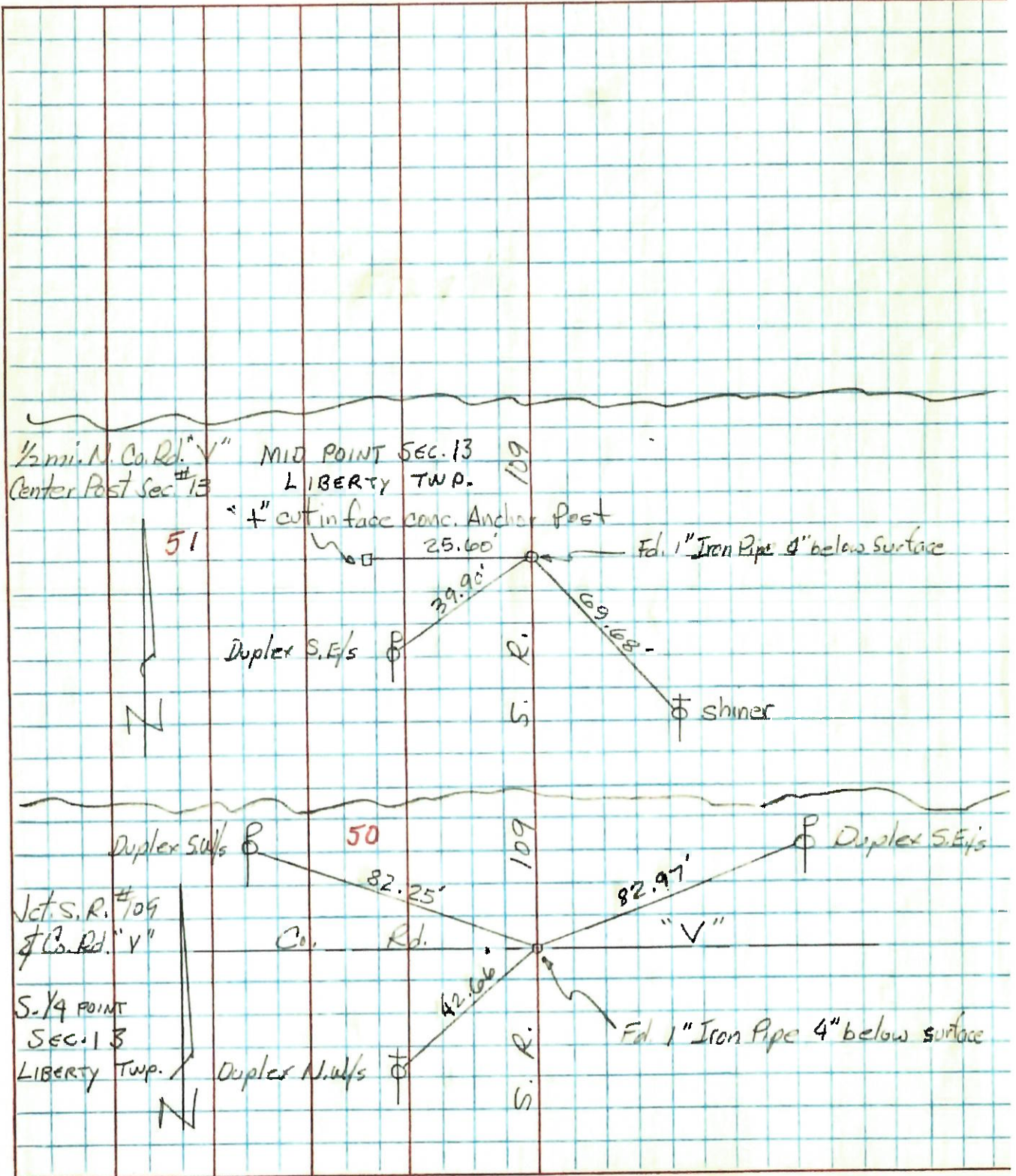
P.K. TOP N. END
12" C.M.P.

4" CUT EAST
FACE CONC. POST



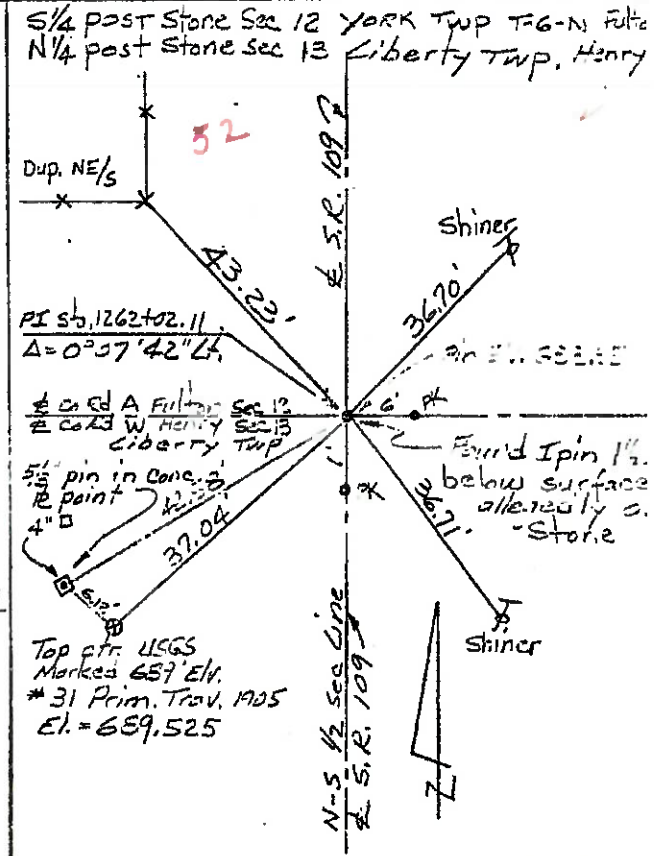
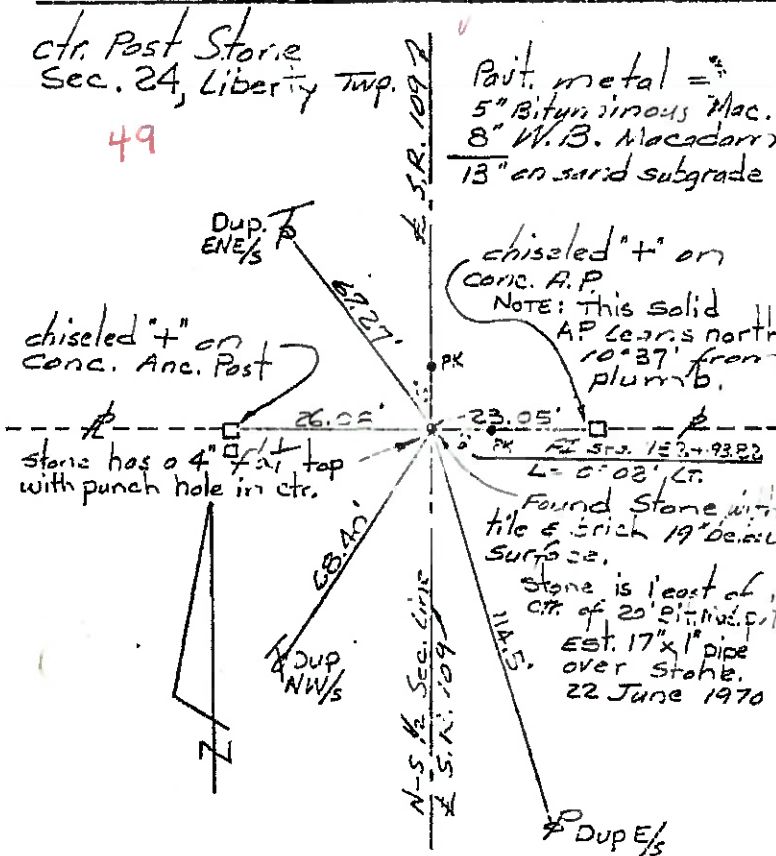
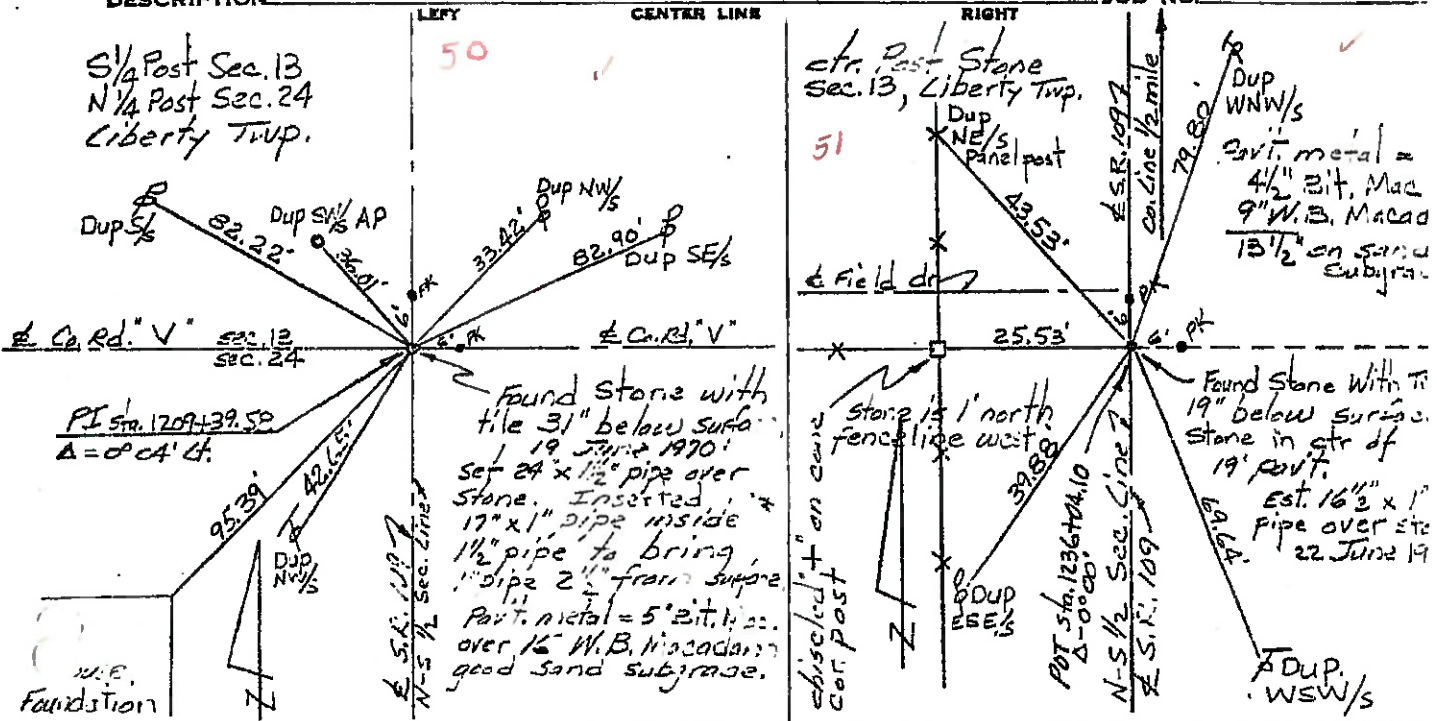
PERSONNEL	TITLE	PERSONNEL	TITLE	COUNTY	DATE
Tomsic				HENRY	DEC. 17, 1973
Weiser				S. R. 109	WEATHER
Vanyo				SEC. LIBERTY TWP	TEMP.
Granata					

DESCRIPTION	LEFT	CENTER LINE	RIGHT	JOB NO.
-------------	------	-------------	-------	---------



PERSONNEL TITLE PERSONNEL TITLE COUNTY HENRY DATE June 1970
Red Beach _____
Newcomb _____
Knappe _____
Wise _____
 S. R. 109 WEATHER _____
 SEC. Liberty Twp TEMP. _____

CONTROL POINTS



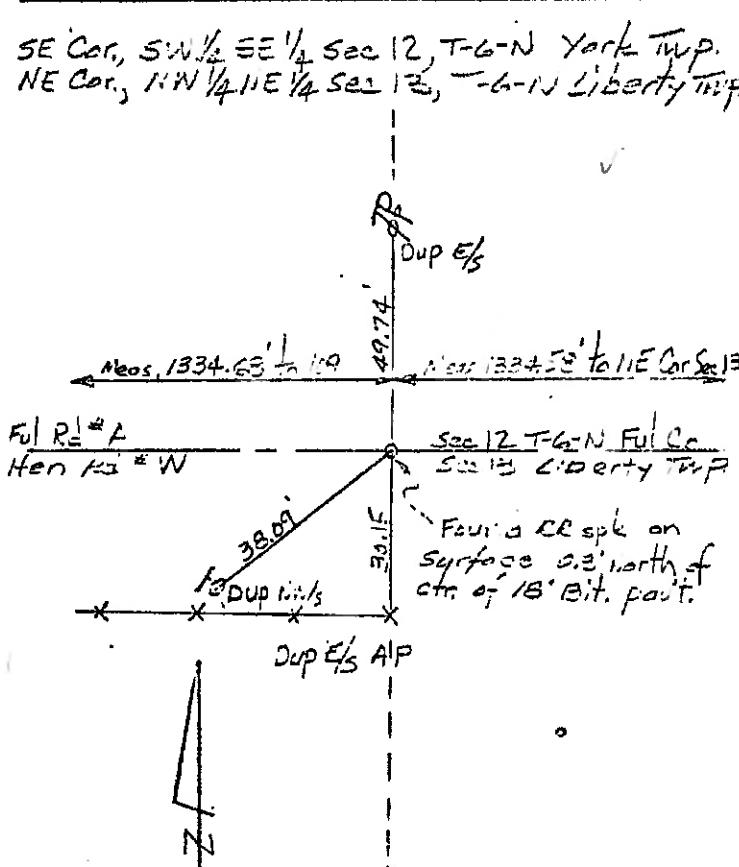
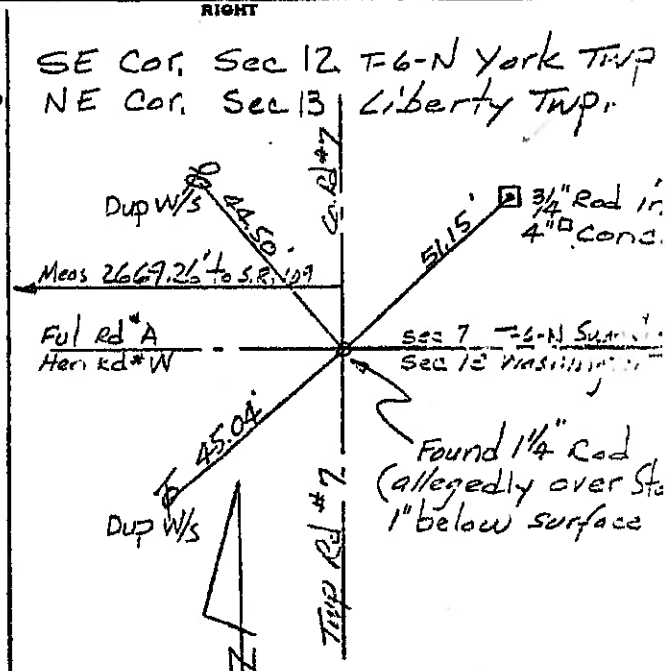
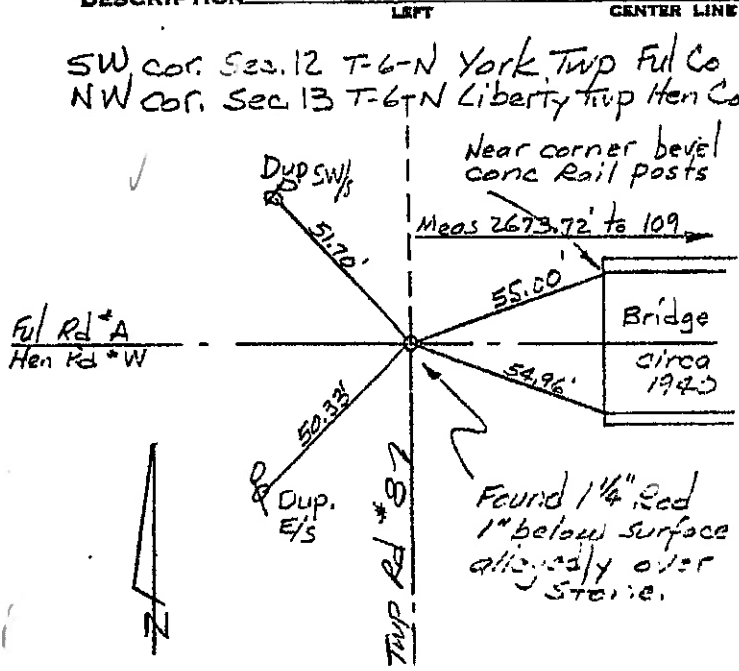
PERSONNEL	TITLE	PERSONNEL	TITLE
Red Beach			
Newcomb			
Knapp			
Lilise			

COUNTY HENRY - FULTON DATE JULY 1970

S. R. 109 WEATHER _____

SEC. 12 & 13 T-6-N TEMP. _____

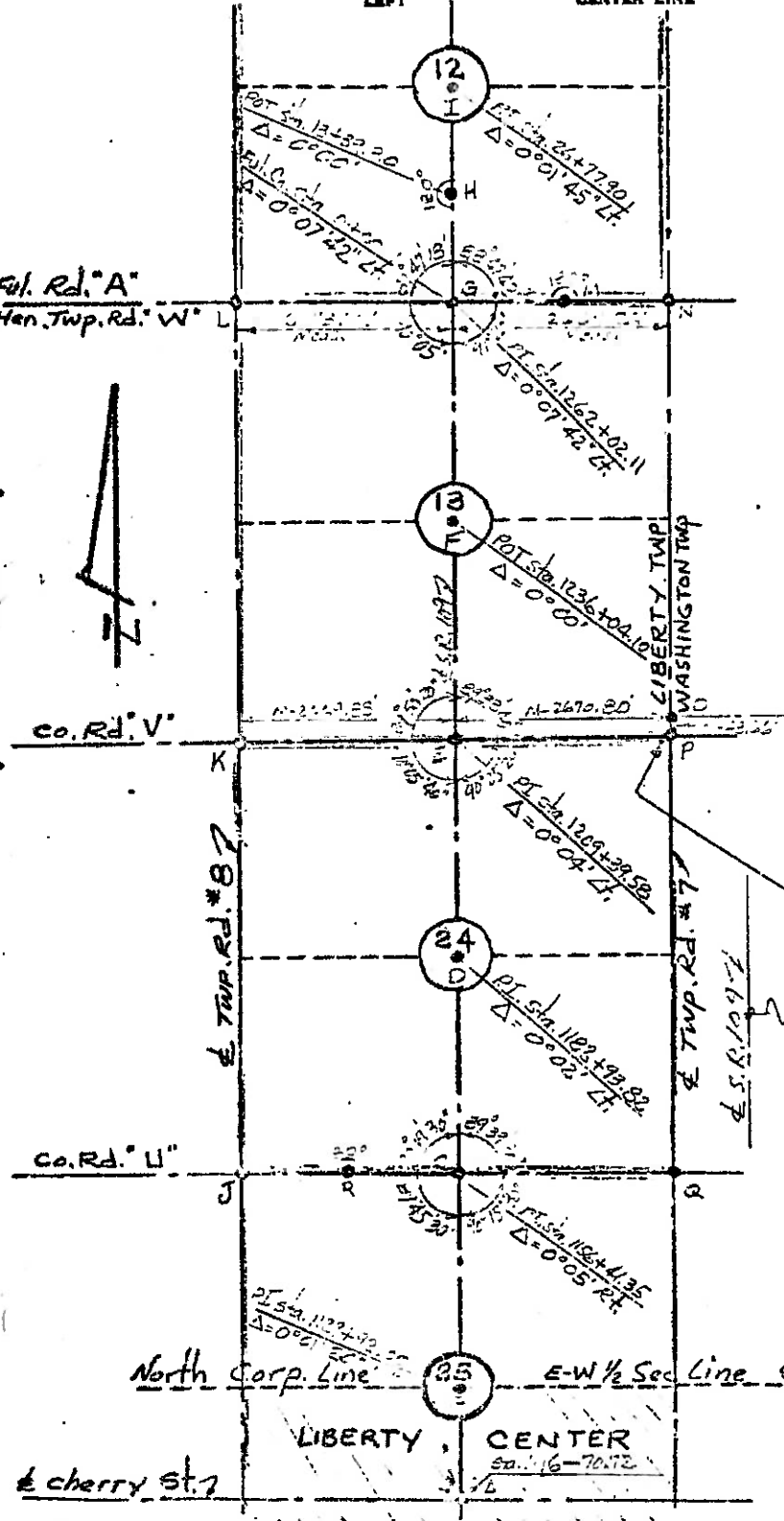
DESCRIPTION CENTRO. POINTS YORK - LIBERTY JOB NO. _____



PERSONNEL	TITLE	PERSONNEL	TITLE	COUNTY	DATE	WEATHER
Red Beach				HENRY	June-July 1977	
Neevcomib				S. R.	109	
Knape				SEC	LIBERTY CENTER NORTH	TEMP.
Wise						

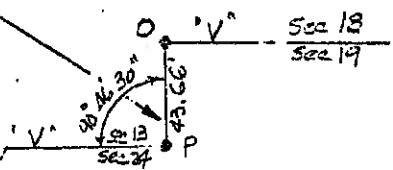
DESCRIPTION _____ ALIGNMENT & CONTROLS _____ JOB NO. _____

52
51
49
47



LEGEND

- A - Found recorded "+" in base conc. Est. 1/2" pipe over "+"
- B - Reconstituted CHACKEN'S SAN. Vol. 6/14, 1952 H.S. Co. Engr. Est. 23"x1" pipe
- C, D, E, F, H, I - Found stones from old records. Est. 1" pipes over stones.
- G - Found recorded I Pin. I. Pin allegedly over Stone.
- J, K, L - Found recorded I Rods I Rods allegedly over stones.
- M - Found RR spk on surface from county records. RR spk is 1894, 68 east of the S.R. 109 (Neas.)
- N - Found recorded I Rod I Rod allegedly over Stone.
- O, P - Found stones from old references. Est. 1" pipes over stones.
- Q - Found I Rod from county records. Slipped 1/2" pipe over Rod
- R - Found I pipe on surface I pipe is allegedly over Stone



North Corp Line _____ E-W 1/2 Sec Line SLM 21.40
LIBERTY CENTER
S. 16-70.72

PERSONNEL TITLE PERSONNEL TITLE COUNTY HENRY DATE JULY 1970
Red Beach _____
Newman _____
Knape _____
Wise _____
 S. R. 109 WEATHER _____
 SEC. Liberty Twp. TEMP. _____

DESCRIPTION CONTROL POINTS JOB NO. _____

