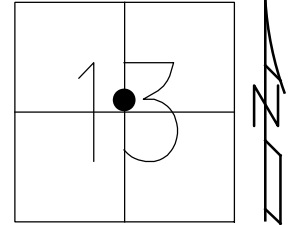


O.D.O.T. DISTRICT 2 SURVEY OFFICE (USE ONLY)

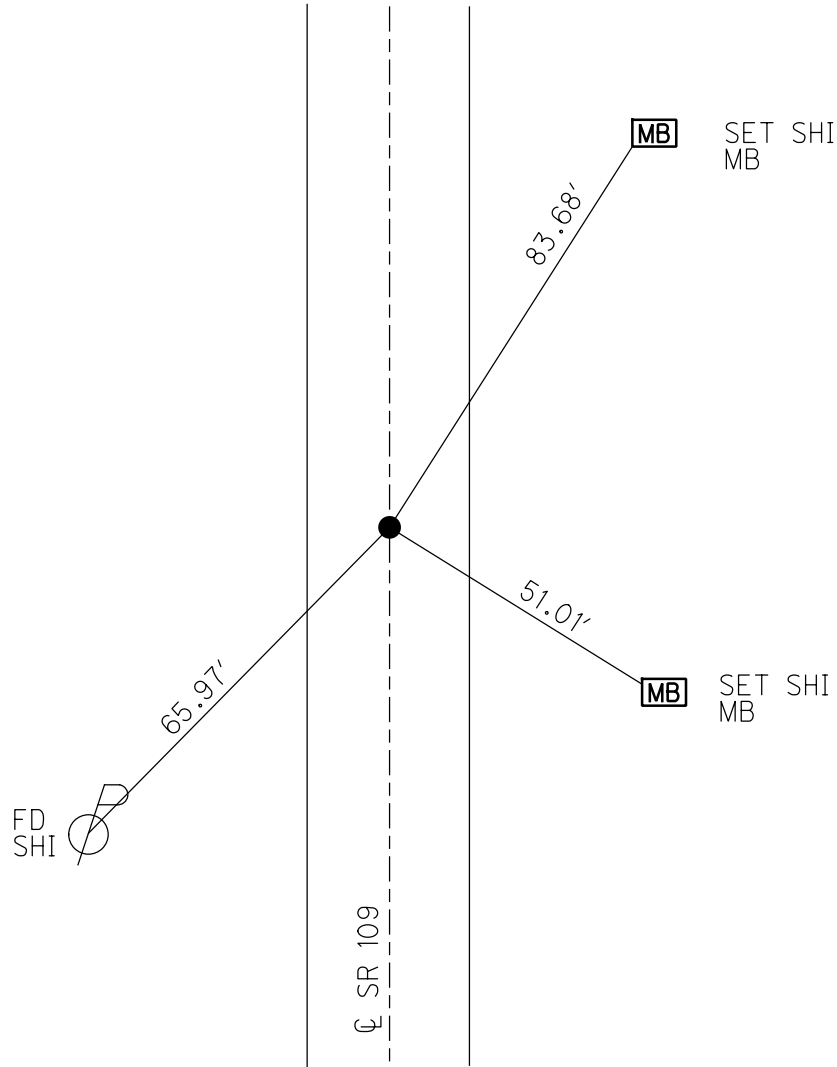
PERSONNEL \_\_\_\_\_ REFERENCE NO. 51 B SHEET 24 OF 31  
 NOTES NIESE DATE 3/5/21 ROUTE SR 109  
 H.C. RHOADES WEATHER SUNNY COUNTY HENRY  
 R.C. \_\_\_\_\_ TEMP. 30° TOWNSHIP LIBERTY  
 DWG BY NIESE PID PAVE TRAIN SECTION 13  
 T 6 N R 7 E

TYPE MONUMENT MAG/WASHER  
 ON SURFACE - ~~BELOW~~ ON  
 OFFSET  $\odot$  PAVEMENT ON LT : RT  
10' TO LT EDGE PAVEMENT  
 STATION: 1238+23.8



HORZ.DATUM: NAD83 2011 GEOID: NAVD88 2012A  
 GRID: NORTHING: 664280.361 EASTING: 1555113.205

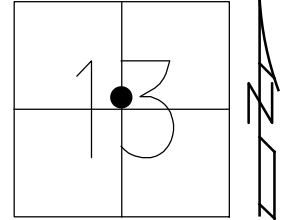
RECORD:  
 SET MAG/WASHER  
 12/10/02, DCH  
 FD MAG/WASHER  
 REFB51  
 2/27/19, JLL  
 6/10/20, JFO  
 3/5/21,  
 1/11/23, JMR



O.D.O.T. DISTRICT 2 SURVEY OFFICE (USE ONLY)

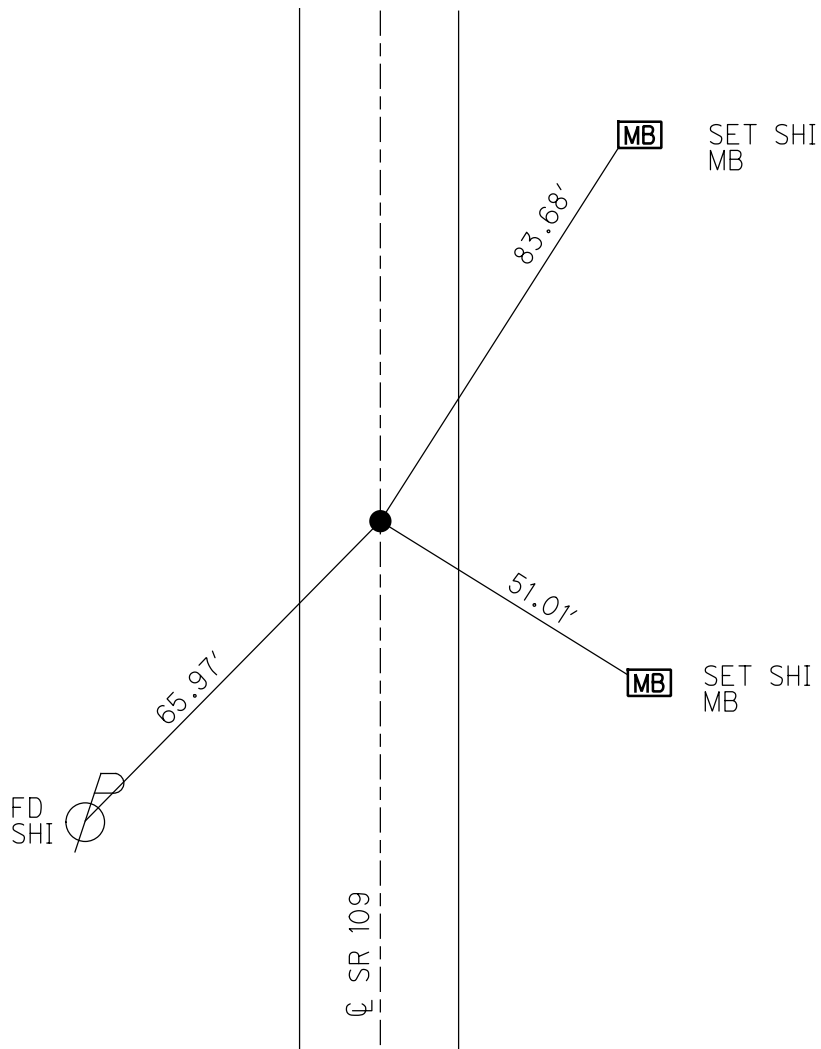
PERSONNEL \_\_\_\_\_ REFERENCE NO. 51 B SHEET 24 OF 31  
 NOTES NIESE DATE 3/5/21 ROUTE SR 109  
 H.C. RHOADES WEATHER SUNNY COUNTY HENRY  
 R.C. \_\_\_\_\_ TEMP. 30° TOWNSHIP LIBERTY  
 DWG BY NIESE PID PAVE TRAIN SECTION 13  
 T 6 N R 7 E

TYPE MONUMENT MAG/WASHER  
 ON SURFACE - ~~BELOW~~ ON  
 OFFSET  $\varnothing$  PAVEMENT ON LT : RT  
10' TO LT EDGE PAVEMENT  
 STATION: 1238+27



HORZ.DATUM: NAD83 2011 GEOID: NAVD88 2012A  
 GRID: NORTHING: 664280.361 EASTING: 1555113.205

RECORD:  
 SET MAG/WASHER  
 12/10/02, DCH  
 FD MAG/WASHER  
 REFB51  
 2/27/19, JLL  
 6/10/20, JFO  
 3/5/21, JMR



O.D.O.T. DISTRICT 2 SURVEY OFFICE

PERSONNEL

REFERENCE NO. 51  
A, B, C

SHEET 21 OF 27

NOTES HOMAN

DATE 9-9-02

ROUTE S.R. 109

H.C. HOMAN

WEATHER SUNNY

COUNTY HENRY

R.C. BROWN

TEMP. 75

TOWNSHIP LIBERTY

SECTION 13

T 6 N R 7 E

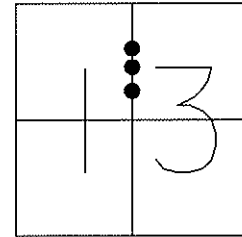
TYPE MONUMENT PK & WASHER

ON SURFACE - ~~BELOW~~ ON

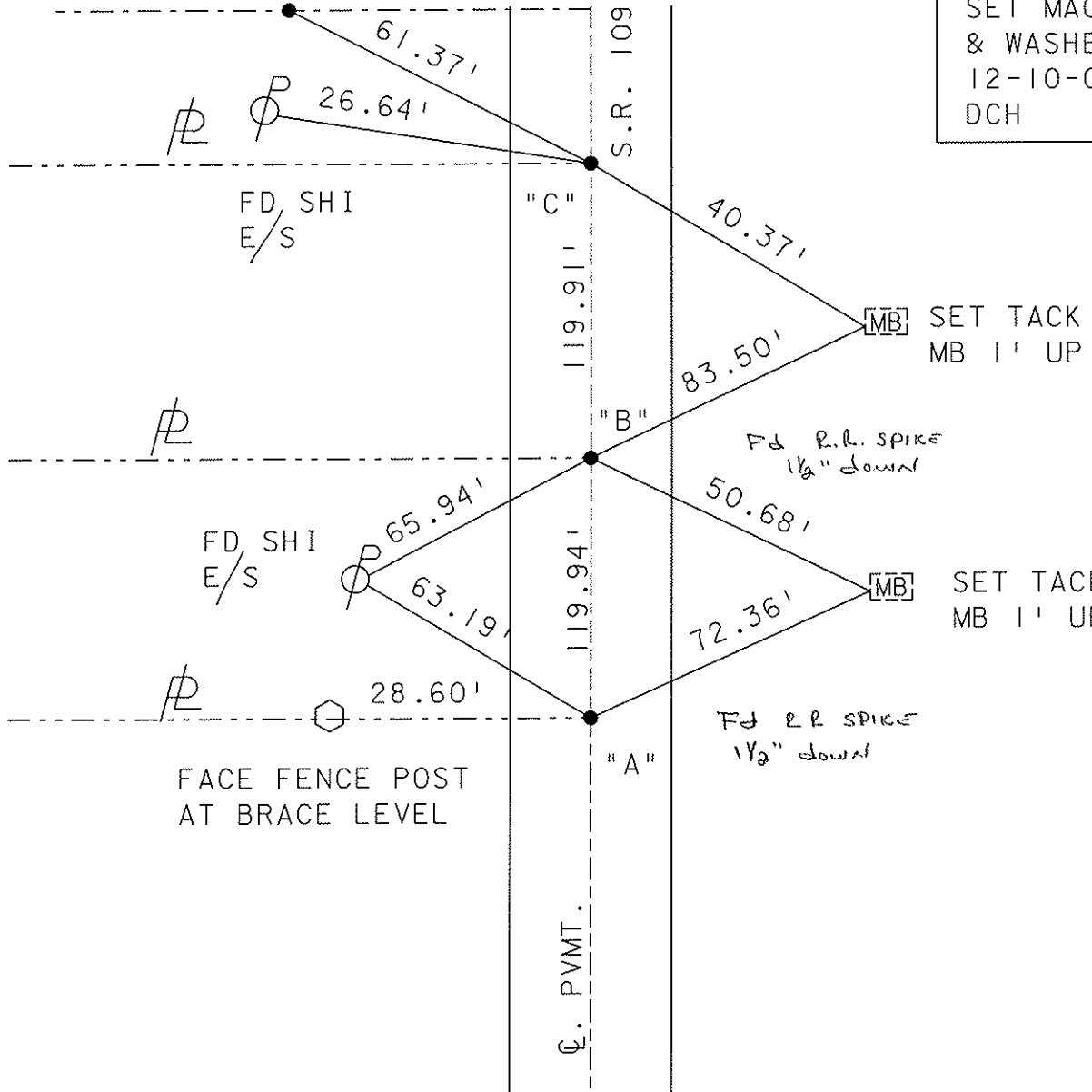
~~LEFT - Q PAV'T - RIGHT~~ ON

10' TO LT EDGE PAVEMENT

S.L.M. 1237+07 PT A



SET MAG NAIL IN Q DRIVE



SET MAG NAIL  
& WASHER  
12-10-02  
DCH

SET TACK  
MB 1' UP

SET TACK  
MB 1' UP

FD R.R. SPIKE  
1/2" down

FACE FENCE POST  
AT BRACE LEVEL

# O.D.O.T. DISTRICT 2 SURVEY OFFICE

PERSONNEL \_\_\_\_\_

REFERENCE NO. 51  
A, B, C

SHEET \_\_\_\_\_ OF \_\_\_\_\_

NOTES VAN DUSEN

H.C. BARNHISEL

R.C. KUSZ

DATE 8-12-92

WEATHER CLEAR

TEMP. + 75° F

ROUTE S.R. 109

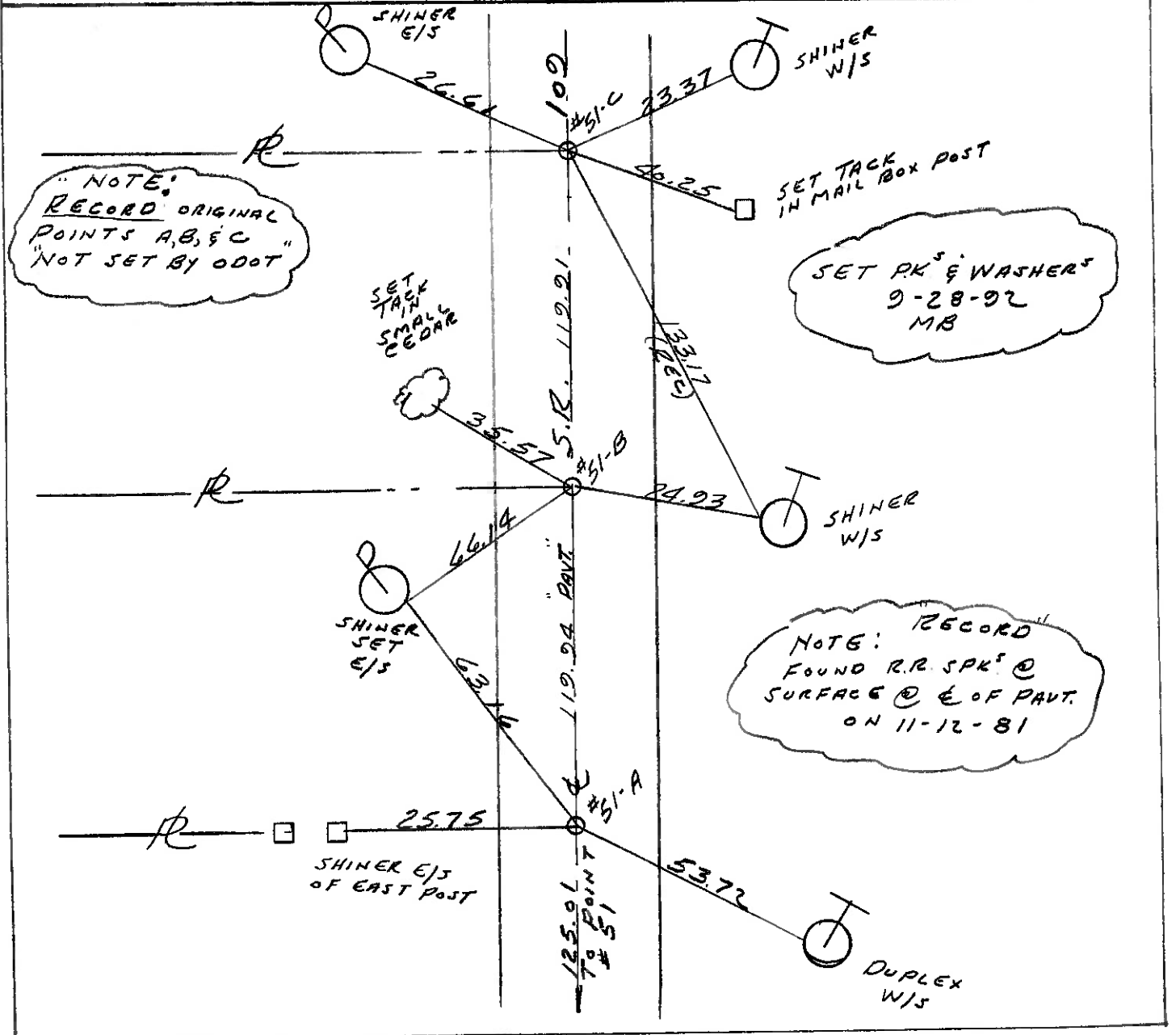
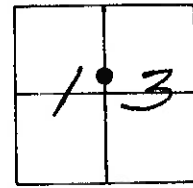
COUNTY HENRY

TOWNSHIP LIBERTY

SECTION 13

T 6 N R 7 E

TYPE MONUMENT P.K.'S & WASHERS  
ON SURFACE - BELOW YES  
LEFT - & PAV'T. - RIGHT YES  
10.4 TO LT. EDGE PAVEMENT  
S.L.M. P.T. A 1237+07



OD.O.T. DISTRICT 2 SURVEY OFFICE

SHEET \_\_\_\_\_ OF \_\_\_\_\_

County Henry S.R. 109

Date 11-12-81

Township Liberty

Weather Clear

Section 13

Temp. +48°

T6N, R7E

Personnel Hoffman

Householder

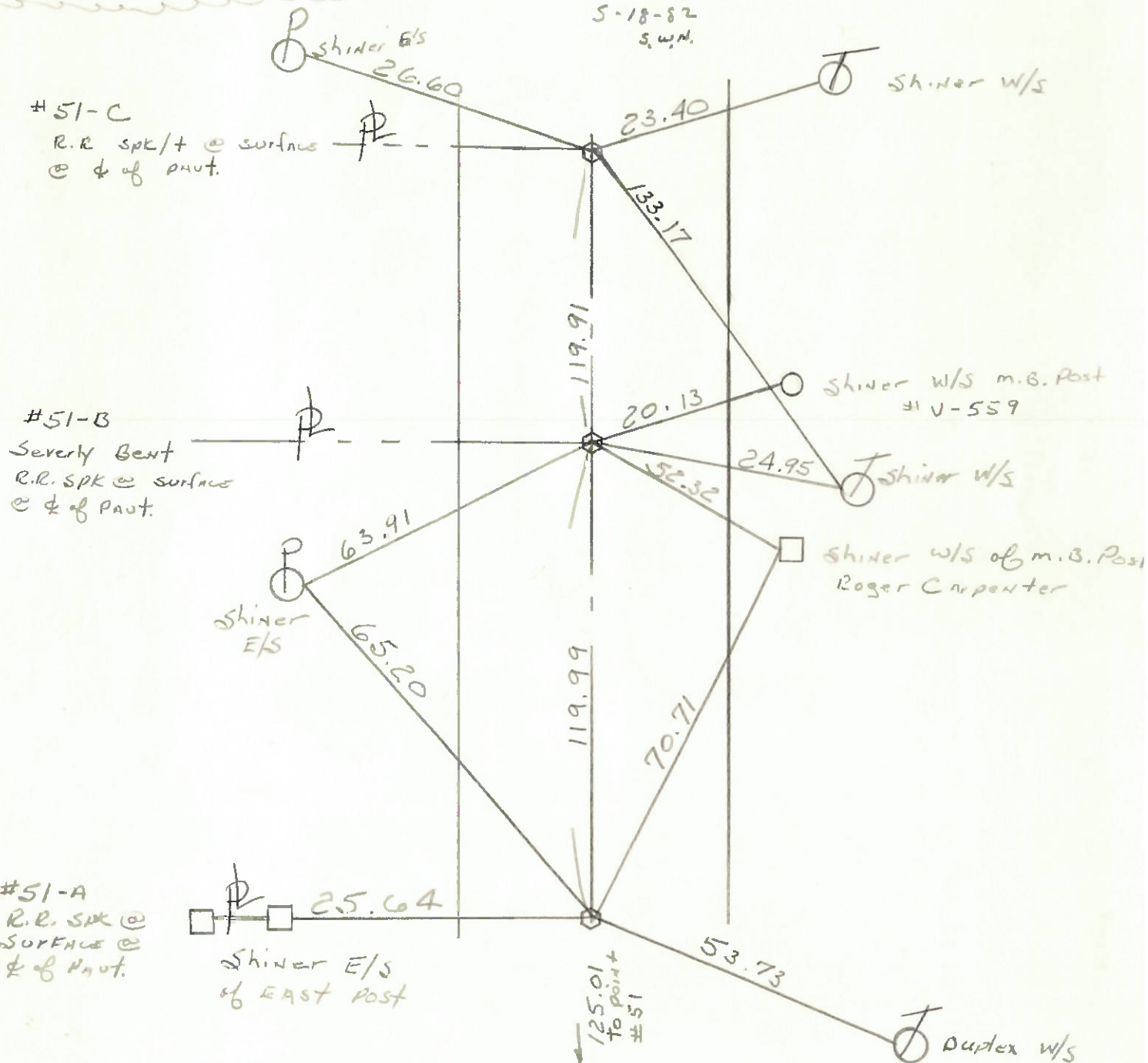
Loehrke



#51-a, b & c Not set by ODOT

RE-SET P.K. & WASHER @ ALL PTS.

5-18-82  
S.W.M.



#51-C

R.R. SPK/T @ surface  
& of PAUT.

#51-B

Severly Bent  
R.R. SPK @ surface  
& of PAUT.

#51-A

R.R. SPK @  
SURFACE @  
& of PAUT.

Shiner E/S  
of EAST Post

125.01  
To point  
#51

Shiner W/S of m.B. Post  
Roger Carpenter

Shiner W/S m.B. Post  
#1 V-559

Shiner W/S

Duplex W/S