

O.D.O.T. DISTRICT 2 SURVEY OFFICE (USE ONLY)

PERSONNEL

REFERENCE NO. 1

SHEET 1 OF 43

NOTES LOEHRKE

DATE 5/27/92

ROUTE SR 110

H.C. CURTIS

WEATHER CLEAR

COUNTY HENRY

R.C. ROMETO

TEMP. 50°

TOWNSHIP NAPOLEON

SECTION 13

DWG BY NIESE

PID _____

T 5 N R 6 E

TYPE MONUMENT SM.R.R.SPIKE

ON SURFACE - ~~BELOW~~ ON

OFFSET \odot PAVEMENT ON LT : RT

- TO - EDGE PAVEMENT

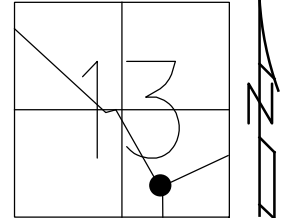
STATION: 15+30

HORIZ.DATUM: _____

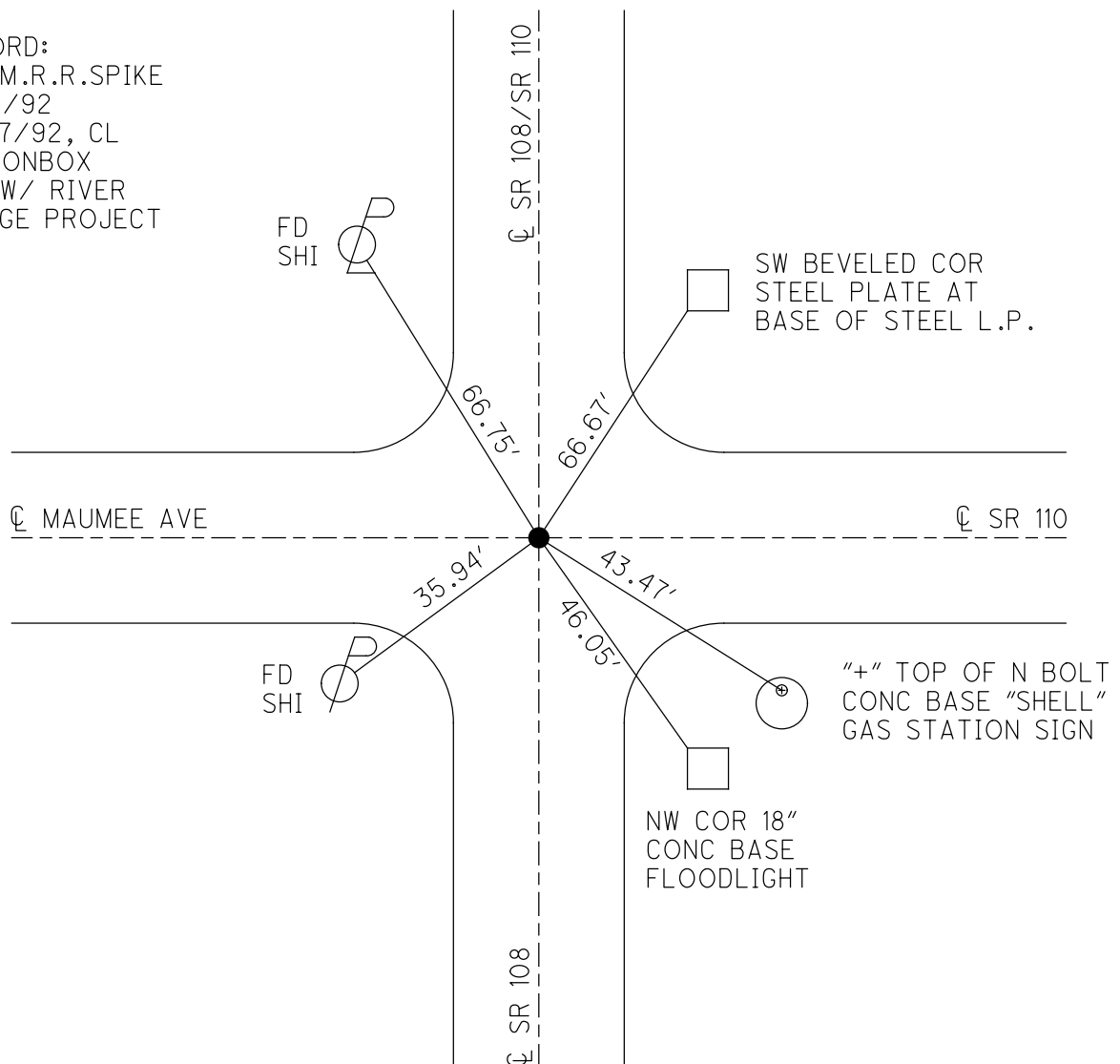
GEOID: _____

GRID: NORTHING: _____

EASTING: _____



RECORD:
FD SM.R.R.SPIKE
5/27/92
10/27/92, CL
FD MONBOX
SET W/ RIVER
BRIDGE PROJECT



O.D.O.T. DISTRICT 2 SURVEY OFFICE

PERSONNEL

REFERENCE NO. 1

SHEET 1 OF 4

NOTES LOEHRKE

H.C. CURTIS

R.C. ROMERO

DATE 5-27-92

WEATHER CLEAR

TEMP. 75.0

ROUTE S.R. 110

COUNTY HENRY

TOWNSHIP NAPOLEAN

SECTION 13

T 5 N R 6 E

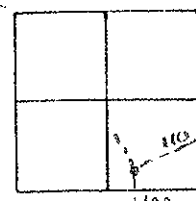
TYPE MONUMENT Sm R.R. Spike OK 10-27-92

ON SURFACE - BELOW Yes

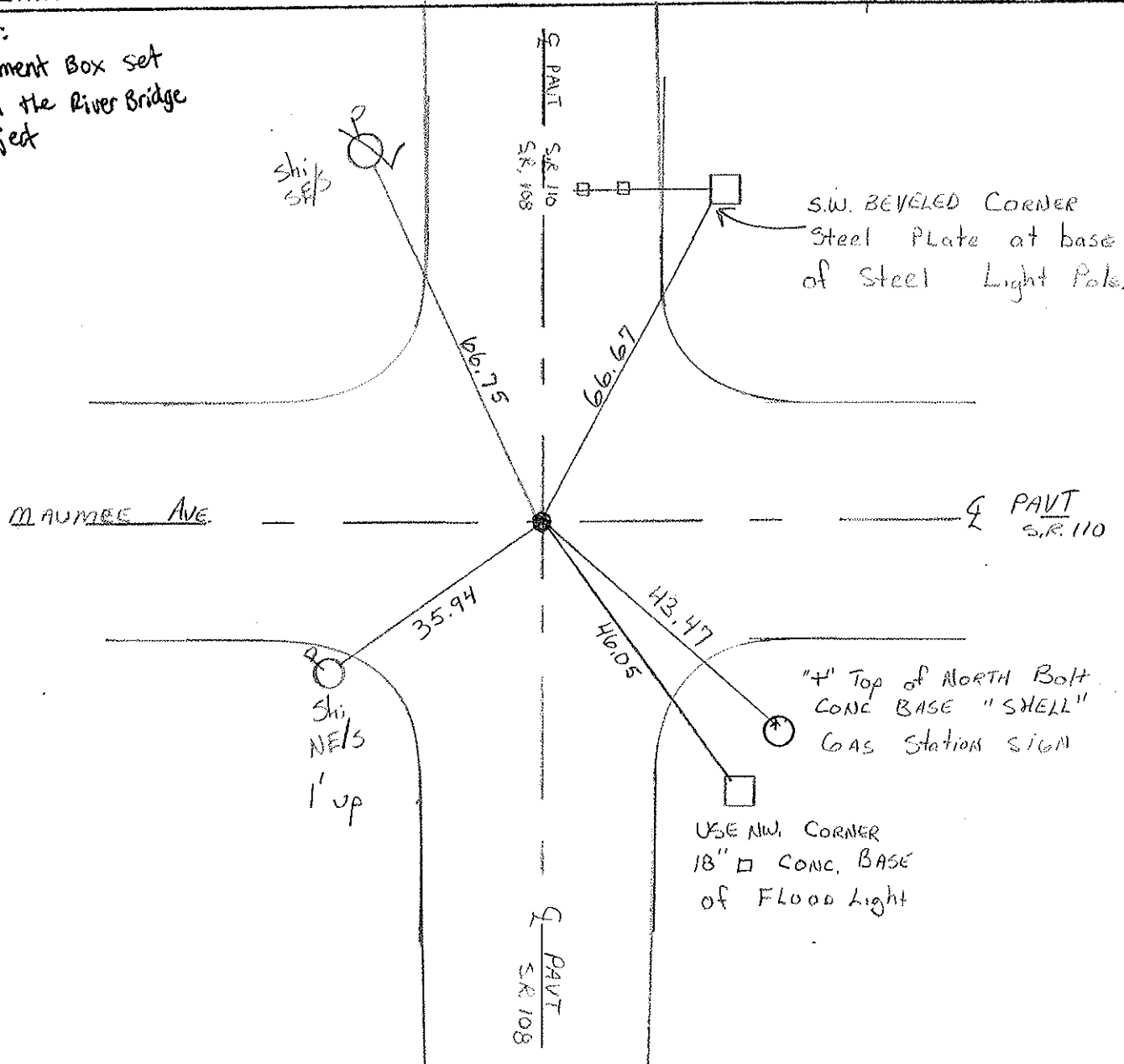
LEFT - & PAV'T. - RIGHT Both

TO EDGE PAVEMENT

S.L.M. 15+30



Note:
Monument Box set
with the River Bridge
Project



"4" Top of NORTH Bolt
CONE BASE "SHELL"
GAS Station SIGN

USE NW CORNER
18" x 18" CONC. BASE
of FLOOD Light

Resurface 2006

O.D.O.T. DISTRICT 2 SURVEY OFFICE

PERSONNEL

REFERENCE NO. 1

SHEET 1 OF 34

NOTES LOEHRKE

H.C. CURTIS

R.C. ROMERO

DATE 5-27-92

WEATHER CLEAR

TEMP. +50

ROUTE S.R. 110

COUNTY HENRY

TOWNSHIP NAPOLEAN

SECTION 13

T 5 N R 6 E

TYPE MONUMENT Sm R.R. Spike

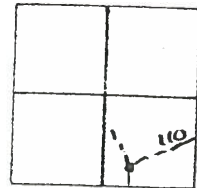
OK 10-27-92

ON SURFACE - BELOW Yes

LEFT - & PAV'T. - RIGHT Both

TO EDGE PAVEMENT

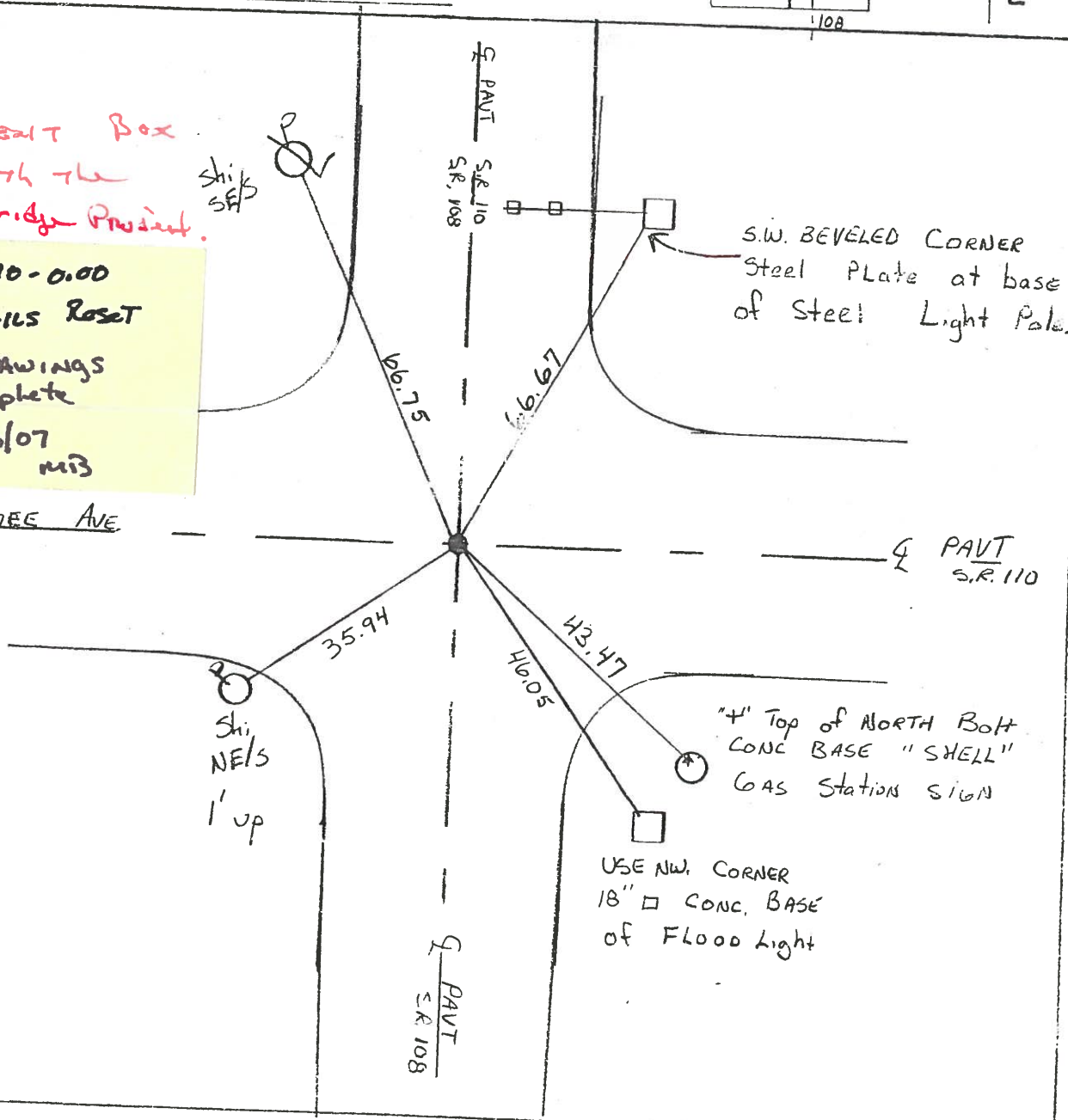
S.L.M. 15+30



NOTES:
MONUMENT BOX
set with the
River Bridge Present.

HEI-110-0.00
NAILS RESET
DRAWINGS
Complete
1/3/07
mib

MAUMEE AVE



Re done
1992

OD.I.T. DISTRICT 2 SURVEY OFFICE

SHEET _____ OF _____

County HENRY S.R. 110

Date 7-12-83

Township NAPOLEON

Weather CLEAR

Section 13 (IN NAPOLEON CORP)

Temp. +90°

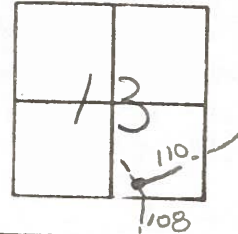
TSN, R4E

Personnel Hoffman

LOEHKE

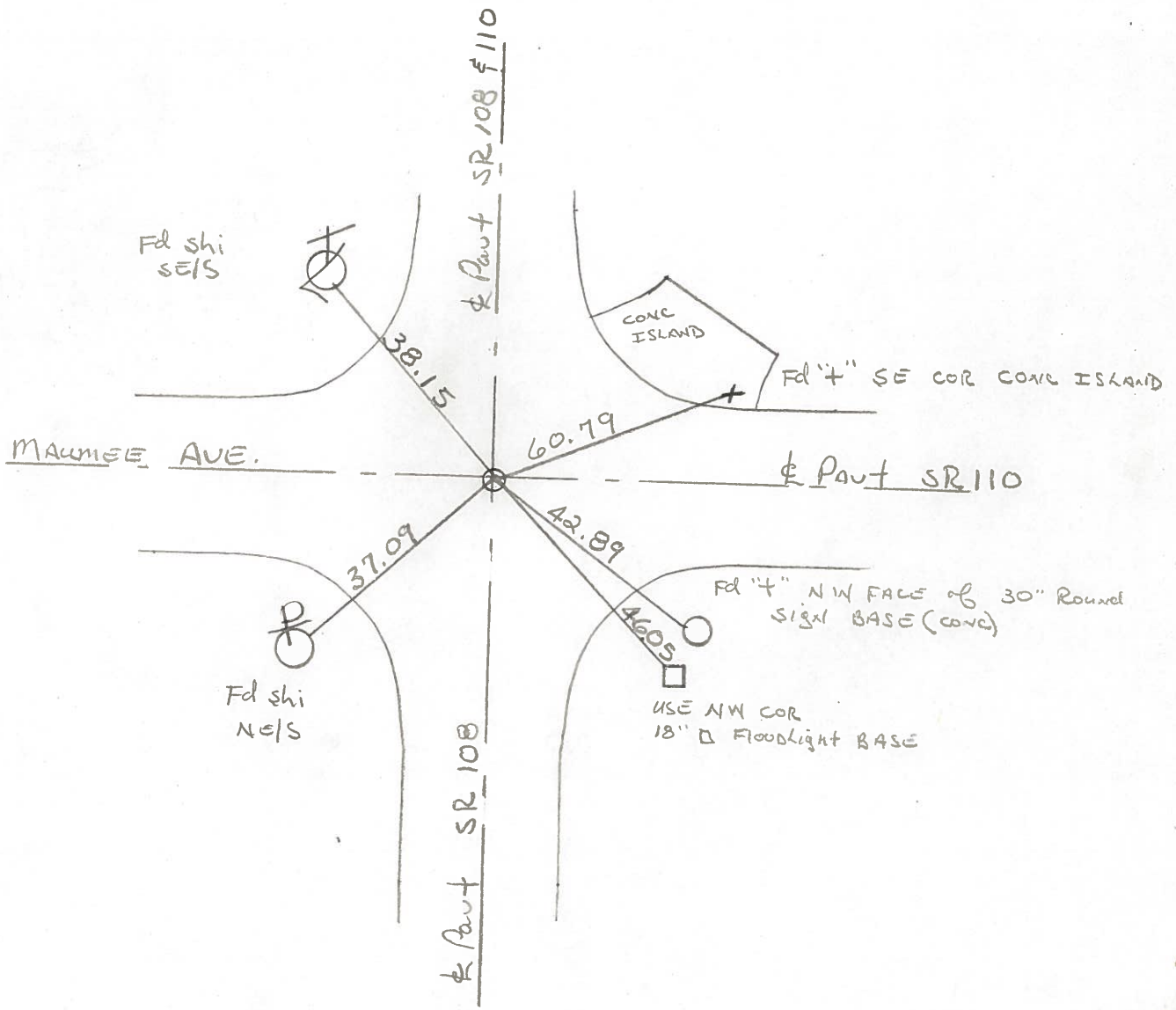
BARNHISEL

#1



Fd 3/4" PIPE 2" Below Surface

SLM = 15 + 30



PERSONNEL TITLE PERSONNEL TITLE

Red Beach
Newcomb
Knappe

COUNTY HENRY DATE Oct. 1972

S. R. 110 WEATHER

SEC. Napoleon TEMP.

DESCRIPTION

CONTROL POINTS

JOB NO.

