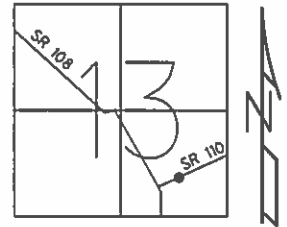


O.D.O.T. DISTRICT 2 SURVEY OFFICE

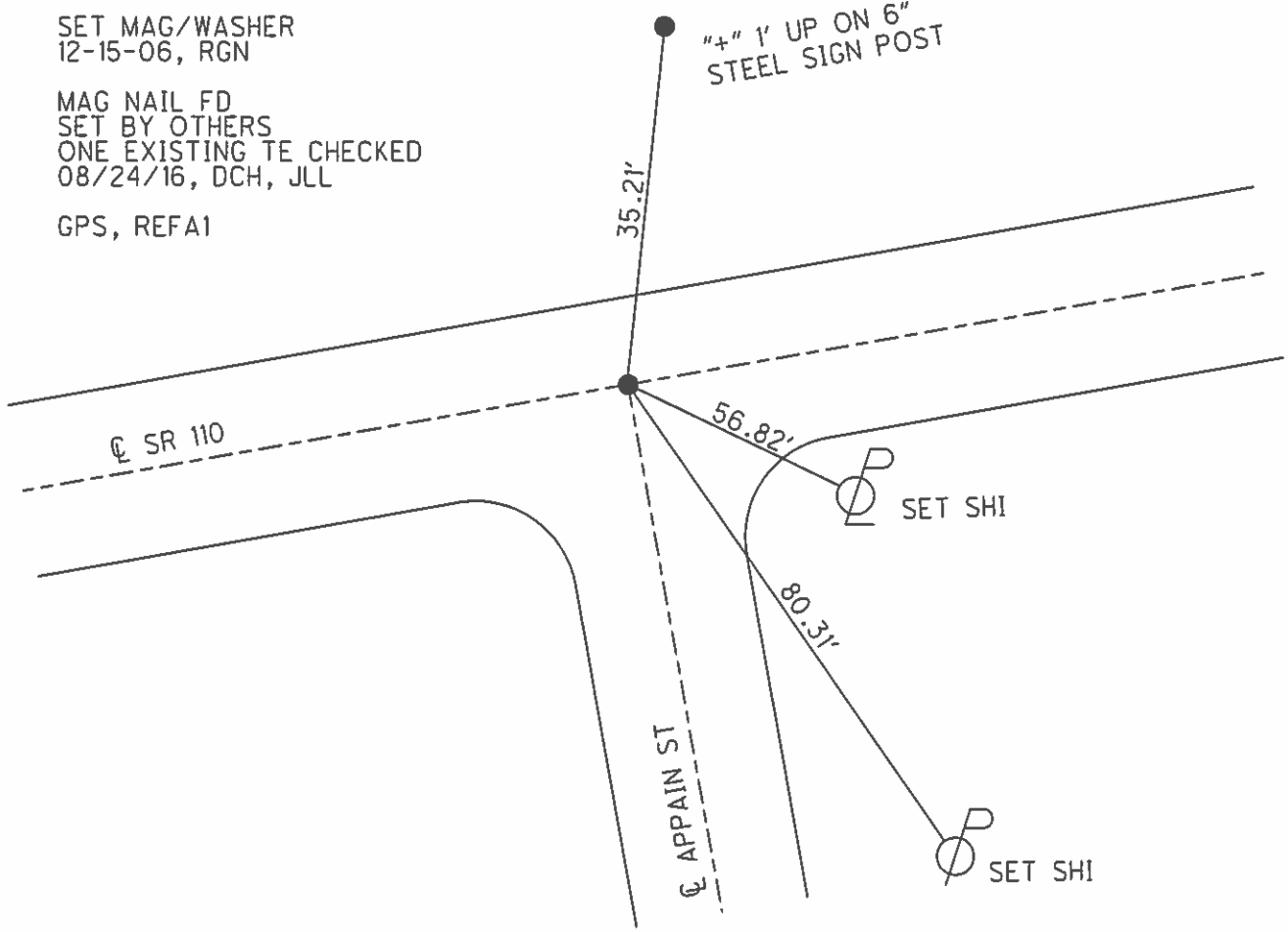
PERSONNEL _____ REFERENCE NO. 1 A SHEET 1 OF 6

NOTES LEU DATE 08/24/16 ROUTE SR 110
 H.C. HOMAN WEATHER CLEAR COUNTY HENRY
 R.C. LEU TEMP. 71° TOWNSHIP NAPOLEON
 SECTION 13
T 5 N R 6 E

TYPE MONUMENT _____ MAG NAIL _____
 ON SURFACE - ~~BELOW~~ _____ ON _____
~~LEFT~~ - Q PAV'T - ~~RIGHT~~ _____ ON _____
22.4 TO LT EDGE PAVEMENT
 S.L.M. _____ 24+91
 GRID: NORTHING: 631020.984 EASTING: 1524443.303



SET MAG/WASHER
 12-15-06, RGN
 MAG NAIL FD
 SET BY OTHERS
 ONE EXISTING TE CHECKED
 08/24/16, DCH, JLL
 GPS, REFA1



O.D.O.T. DISTRICT 2 SURVEY OFFICE

PERSONNEL _____

REFERENCE NO. _____

SHEET 1 OF 7

NOTES BARNHISEL

DATE 9/14/06

ROUTE S.R. 110

H.C. CANTERBURY

WEATHER CLEAR

COUNTY HENRY

R.C. BARNHISEL

TEMP. +75

TOWNSHIP NAPOLEAN

SECTION 13

T 5 N R 6 E

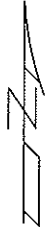
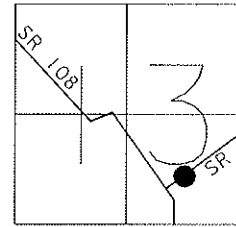
TYPE MONUMENT MAG NAIL

ON SURFACE - ~~BELOW~~ YES

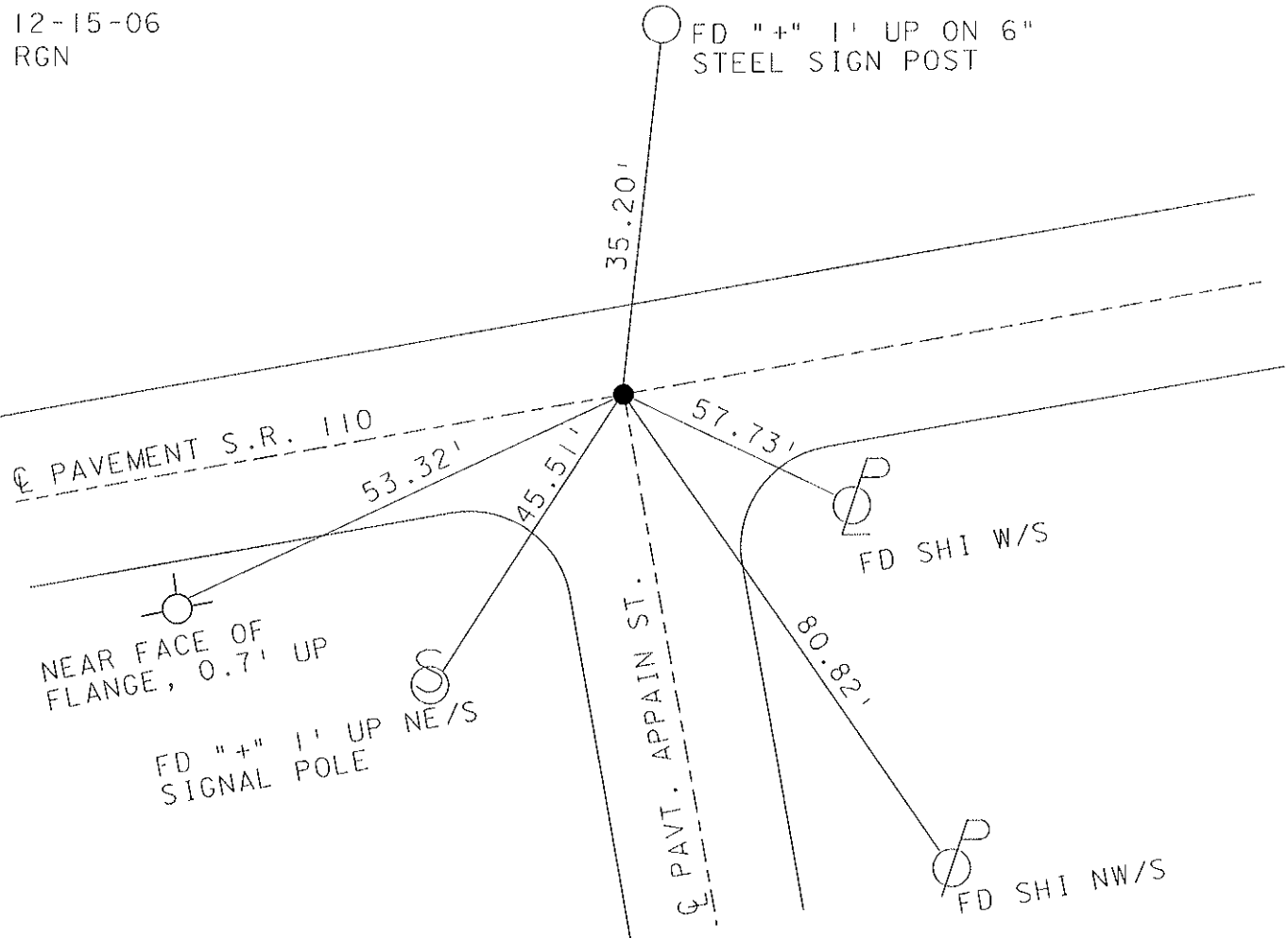
~~LEFT - Q~~ PAV'T - ~~RIGHT~~ YES

22.4 TO LT. EDGE PAVEMENT

S.L.M. 24+91



SET MAG/ WASHER
12-15-06
RGN



O.D.O.T. DISTRICT 2 SURVEY OFFICE

PERSONNEL

REFERENCE NO. 2 IA

SHEET 2 OF 34

NOTES LOEHRKE MB

9/14/04

H.C. CURTIS MC

DATE 5-27-92

ROUTE S.R. 110

R.C. ROMETO MB

WEATHER Clear

COUNTY HENRY

TEMP. +55.75

TOWNSHIP NAPOLEAN

SECTION 13

may Nail/washer Set P.K./WASHER 5 NR 6 E
10-27-92

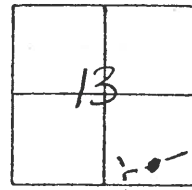
TYPE MONUMENT Sm. R.R. Spike

ON SURFACE - ~~BELOW~~ Yes

LEFT-C PAV'T. - RIGHT Yes

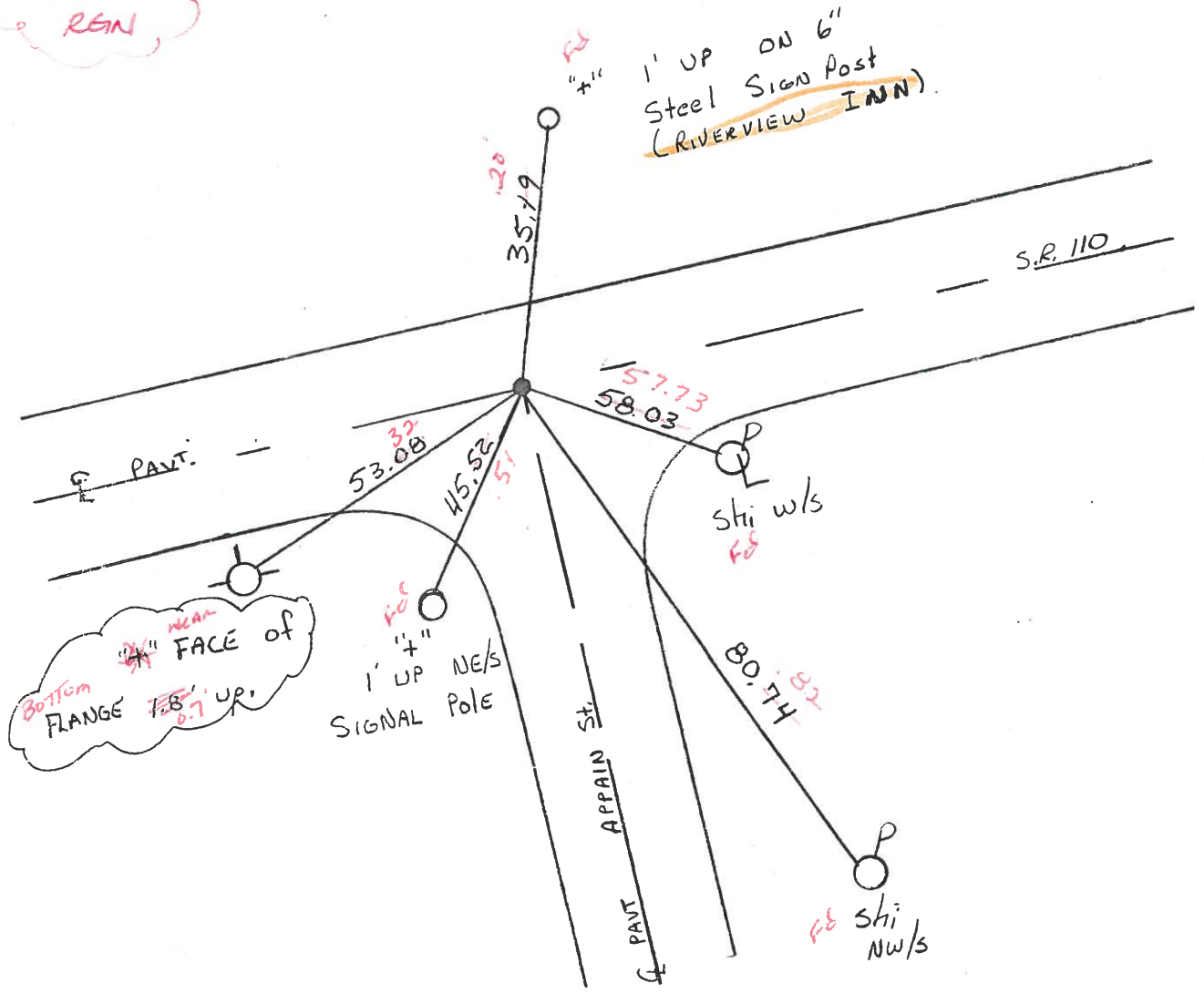
22.4 TO LT EDGE PAVEMENT Yes

S.L.M. 24+91



*Set May/washer
12-15-06
RGN*

*1' UP ON 6"
Steel SIGN Post
(RIVERVIEW INN)*



QD.O.T. DISTRICT 2 SURVEY OFFICE

SHEET _____ OF _____

County HENRY S.R. 110

Date 7-12-83

Township NAPOLEON

Weather CLEAR

Section 13 (IN NAPOLEON CORP)

Temp. +90°

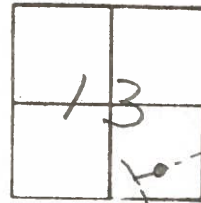
TSN, R6E

Personnel HOFFMAN

LOEHRKE

BARNHISEL

IA

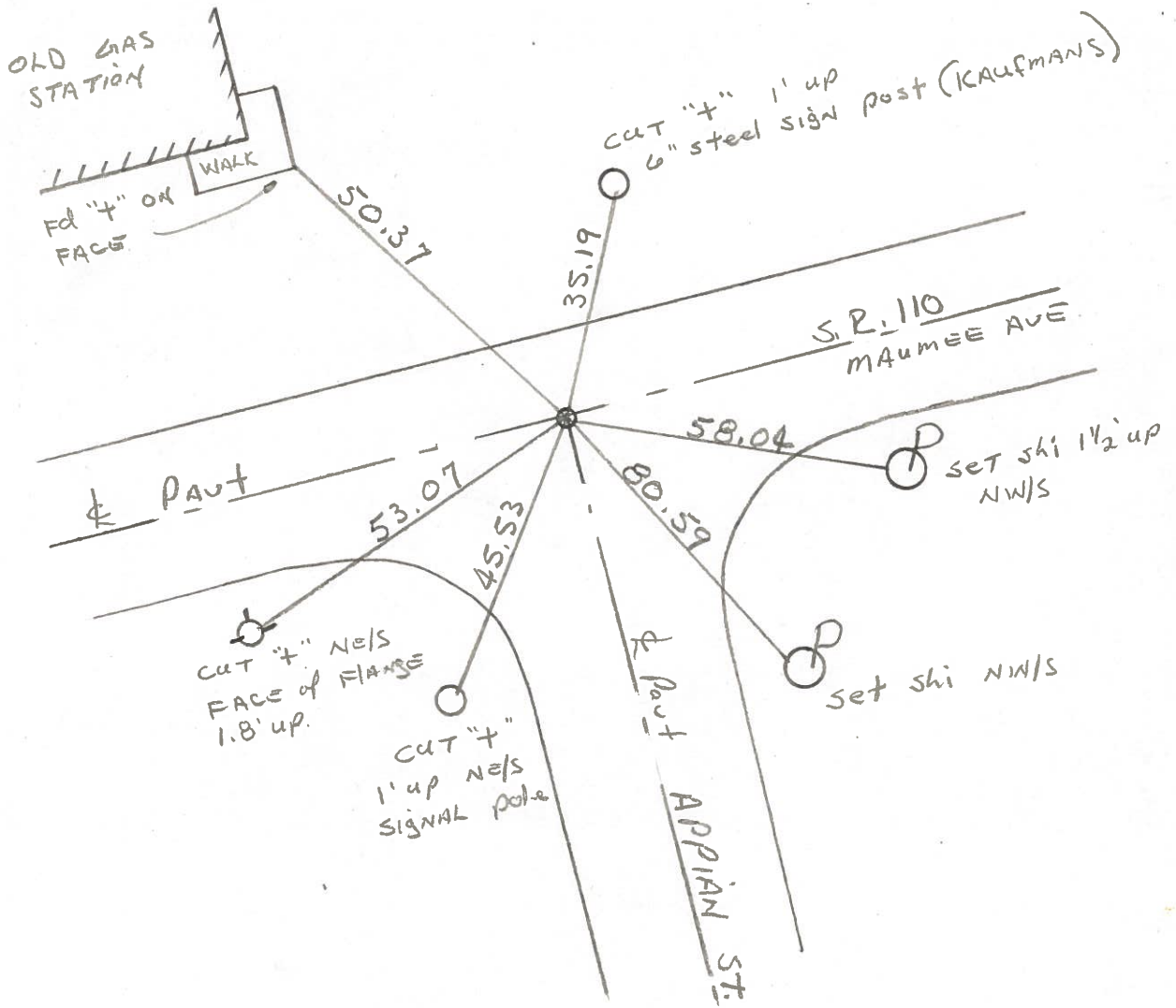


Fd $\frac{3}{4}$ " PIPE 2" BELOW SURFACE

SKM = 24+91

SET SMALL R.R. SPK.

6/13/84 M.B.



O.D.O.T. DISTRICT 2 SURVEY OFFICE

PERSONNEL

REFERENCE NO. 81A SHEET 2 OF 34

NOTES Loehrke

H.C. CURTIS

R.C. ROMETO

DATE 5-27-92

WEATHER Clear

TEMP. +55

ROUTE S.R. 110

COUNTY HENRY

TOWNSHIP NAPOLEAN

SECTION 13

Set P.K./WASHER T 5 N R 6 E
10-27-92

TYPE MONUMENT Sm. R.R. Spike

ON SURFACE - BELOW Yes

LEFT-C PAV'T. - RIGHT Yes

22.4 TO LT EDGE PAVEMENT

S.L.M. 24+91

