

O.D.O.T. DISTRICT 2 SURVEY OFFICE (USE ONLY)

PERSONNEL

REFERENCE NO. 2 A

SHEET 4 OF 51

NOTES MILLER DATE 12/19/23
 H.C. AUBLE WEATHER CLEAR
 R.C. RHOADES TEMP. 27°
ASTON

ROUTE SR 110
 COUNTY HENRY
 TOWNSHIP HARRISON
 SECTION 18
T 5 N R 7 E

DWG BY RHOADES PID 94321

TYPE MONUMENT MAG/WASHER

ON SURFACE - ~~BELOW~~ ON

OFFSET ☉ PAVEMENT ON LT : RT

13.8' TO RT EDGE PAVEMENT

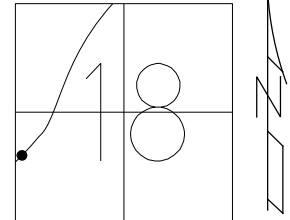
STATION: 39+70

HORIZ.DATUM: NAD83 2011

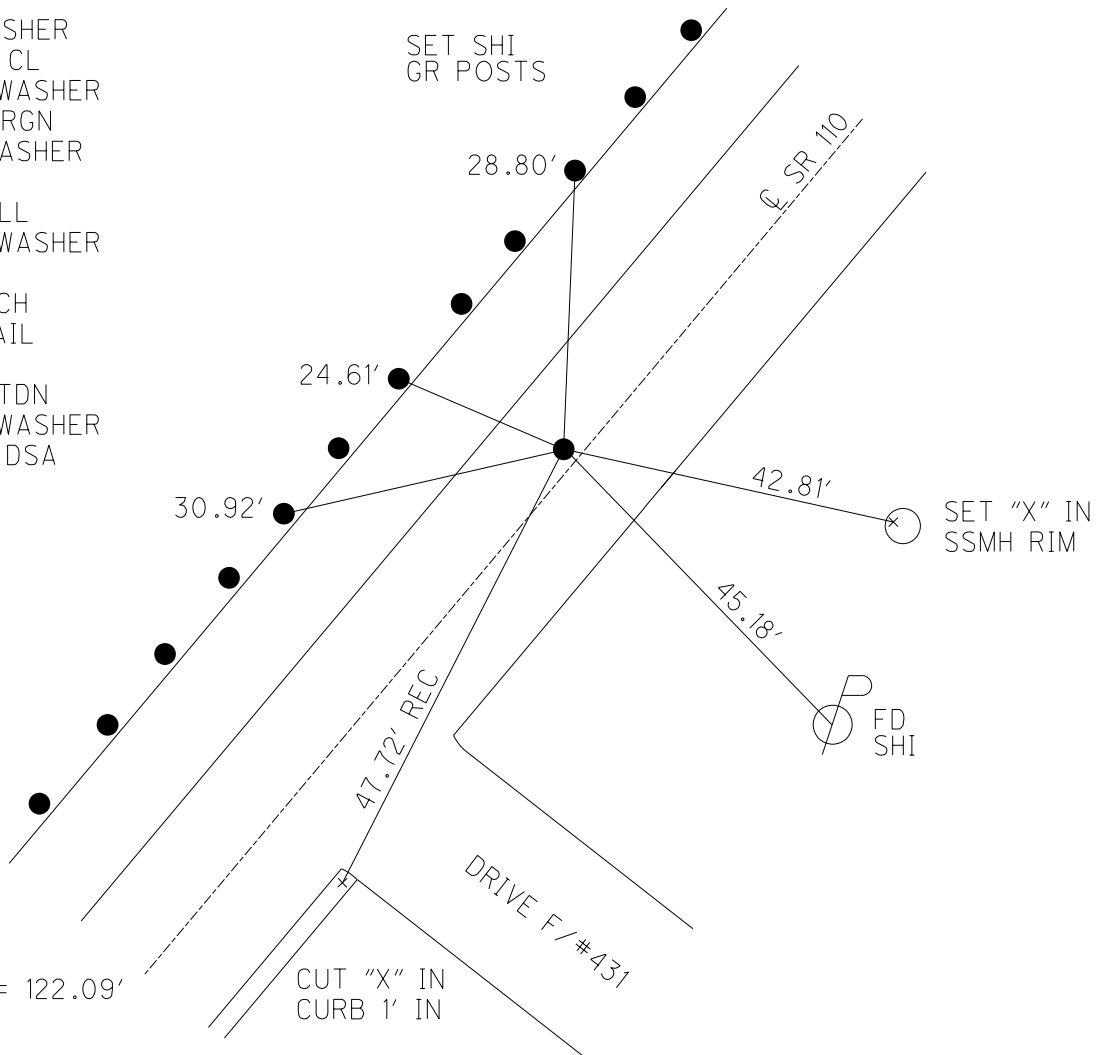
GEOID: NAVD88 2018

GRID: NORTHING: 631984.312

EASTING: 1525571.024



- RECORD:
 FD P.K.WASHER
 10-27-92, CL
 SET MAG/WASHER
 12-15-06, RGN
 FD MAG/WASHER
 REFA2
 1-29-16, JLL
 SET MAG/WASHER
 NEWREFA2
 8-24-16 DCH
 FD MAG NAIL
 REFA2
 8/18/23, TDN
 SET MAG/WASHER
 12/19/23, DSA



O.D.O.T. DISTRICT 2 SURVEY OFFICE (USE ONLY)

PERSONNEL

REFERENCE NO. 2 A

SHEET 4 OF 44

NOTES ASTON
 H.C. NIESE
 R.C. RHOADES
AUBLE

DATE 8/18/23
 WEATHER CLEAR
 TEMP. 75°

ROUTE SR 110
 COUNTY HENRY
 TOWNSHIP HARRISON
 SECTION 18
T 5 N R 7 E

DWG BY RHOADES PID 94321

TYPE MONUMENT MAG NAIL

ON SURFACE - ~~BELOW~~ ON

OFFSET ϕ PAVEMENT ON LT : RT

13.8' TO RT EDGE PAVEMENT

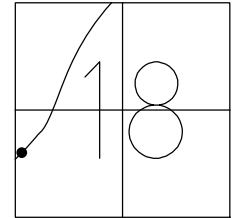
STATION: 39+70

HORZ.DATUM: NAD83 2011

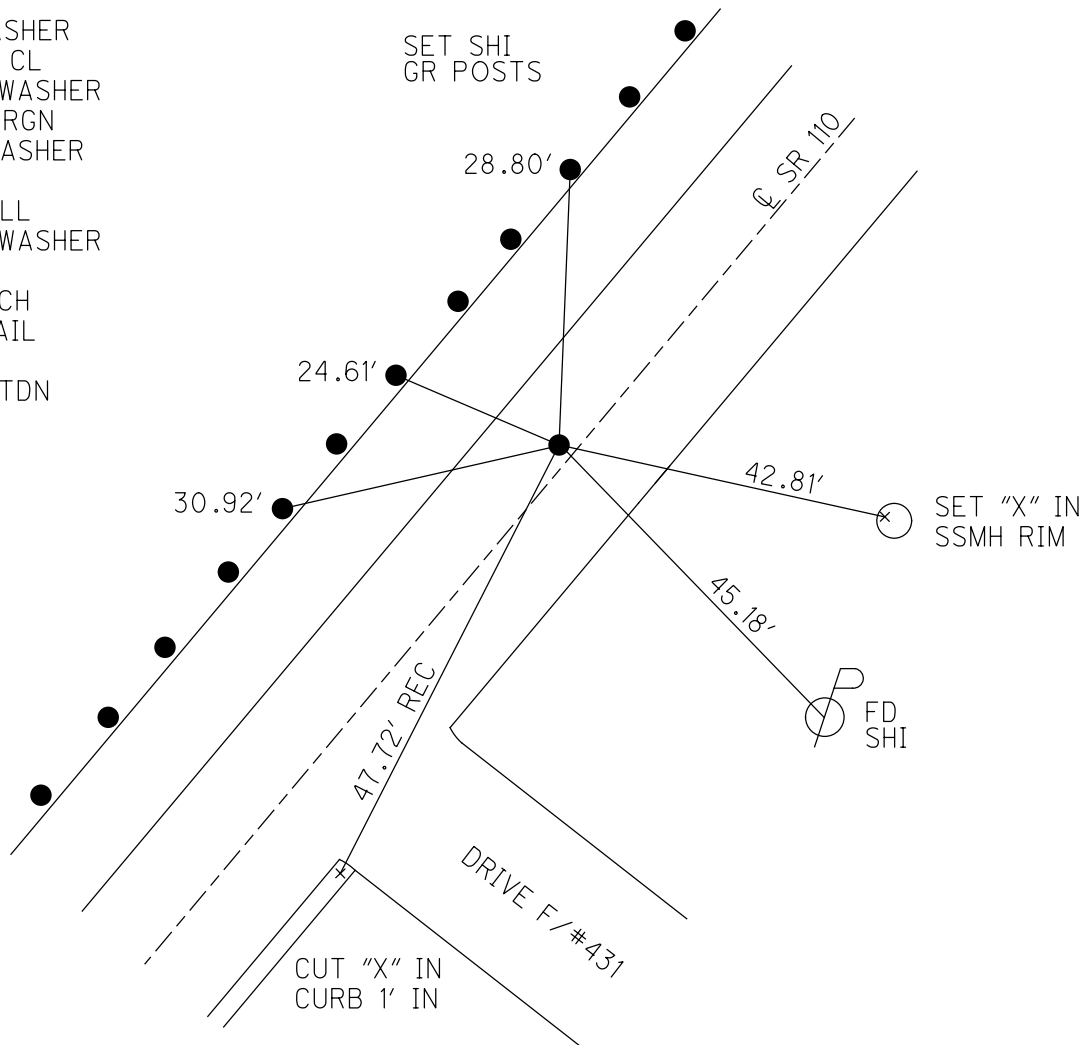
GEOID: NAVD88 2018

GRID: NORTHING: 631984.373

EASTING: 1525571.003



- RECORD:
 FD P.K.WASHER
 10-27-92, CL
 SET MAG/WASHER
 12-15-06, RGN
 FD MAG/WASHER
 REFA2
 1-29-16, JLL
 SET MAG/WASHER
 NEWREFA2
 8-24-16 DCH
 FD MAG NAIL
 REFA2
 8/18/23, TDN



O.D.O.T. DISTRICT 2 SURVEY OFFICE

PERSONNEL _____

REFERENCE NO. _____

SHEET 3 OF 7

NOTES BARNHISEL

DATE 9/14/06

ROUTE S.R. 110

H.C. CANTERBURY

WEATHER CLEAR

COUNTY HENRY

R.C. BARNHISEL

TEMP. +75

TOWNSHIP HARRISON

SECTION 18

T 5 N R 7 E

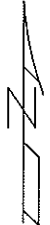
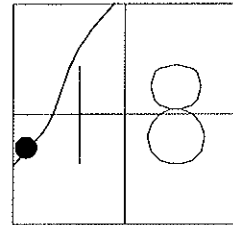
TYPE MONUMENT P.K. NAIL

~~ON SURFACE~~ - BELOW 1"

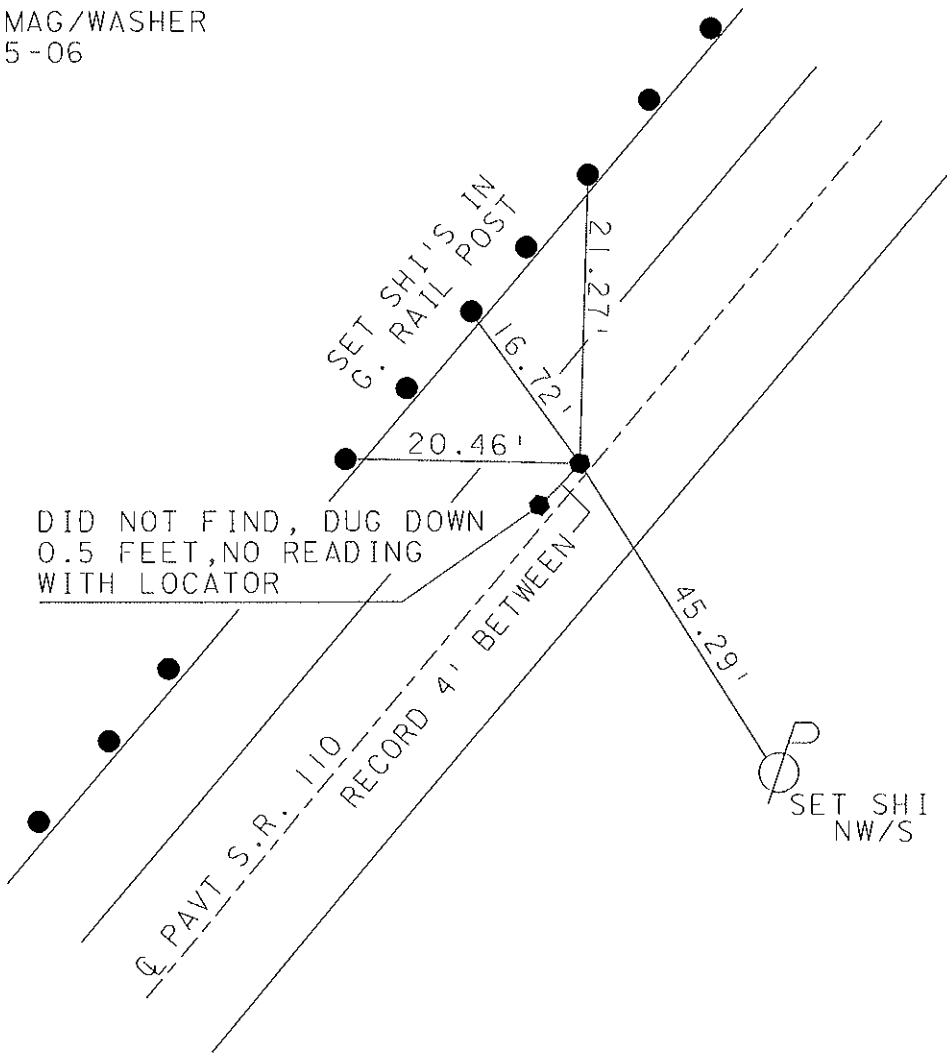
~~LEFT - Q PAV'T - RIGHT~~ YES

13.8 TO RT ~~EDGE PAVEMENT~~ TO CURB

S.L.M. 39+70



SET MAG/WASHER
12-15-06
RGN



O.D.O.T. DISTRICT 2 SURVEY OFFICE

PERSONNEL

REFERENCE NO. 2A

SHEET 4 OF 34

NOTES LOEHRKE MB

9/14/04

H.C. CURTIS MC

DATE 5-27-92

ROUTE S.R. 110

R.C. ROMETO MB

WEATHER CLEAR ✓

COUNTY HENRY

TEMP. +60 +75

TOWNSHIP HARRISON

SECTION 18

T 5 N R 7 E

TYPE MONUMENT P.K. / ~~WASHERS~~

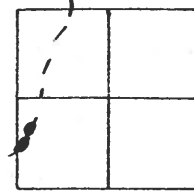
10-27-92

ON SURFACE - BELOW YES 1"

LEFT- & PAV'T - RIGHT Yes ✓

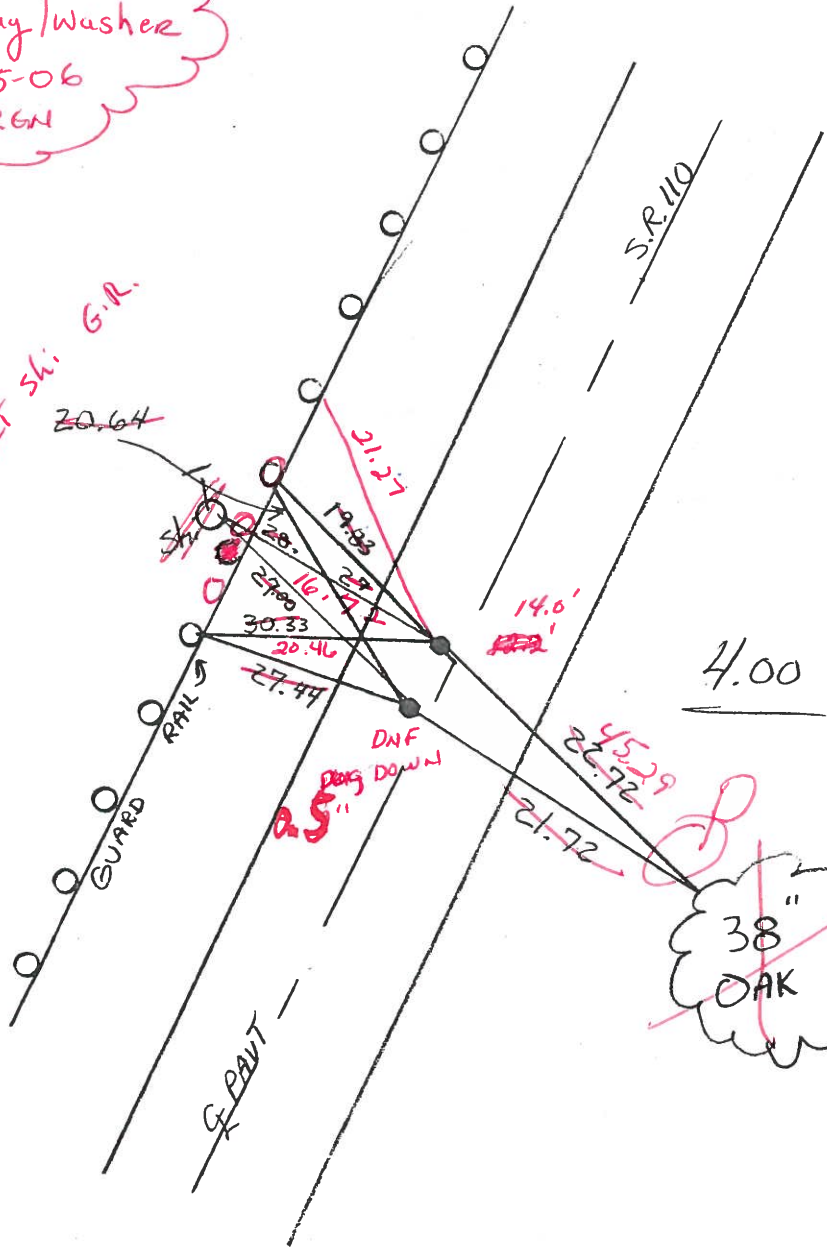
13.9' ~~14.0'~~ TO RT EDGE PAVEMENT

S.L.M. 39+66 39+70



Set May/Washer
12-15-06
e RGN

Set shi. G.R.
20.64



4.00 BETWEEN

38"
OAK

O.D.O.T. DISTRICT 2 SURVEY OFFICE

PERSONNEL

REFERENCE NO. 24

SHEET 4 OF 34

NOTES LOEHRKE

H.C. CURTIS

R.C. ROMETO

DATE 5-27-92

WEATHER CLEAR

TEMP. +60

ROUTE S.R. 110

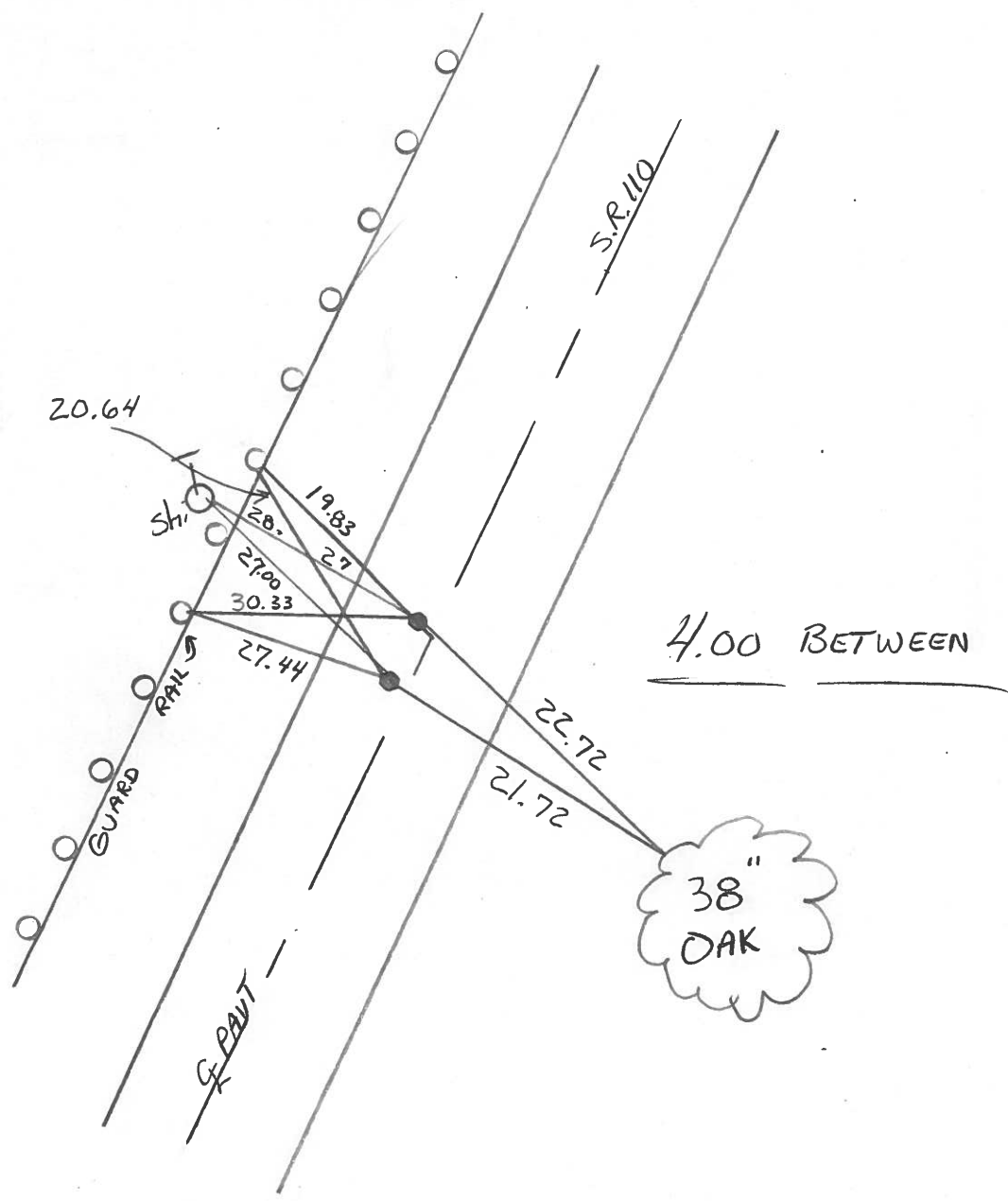
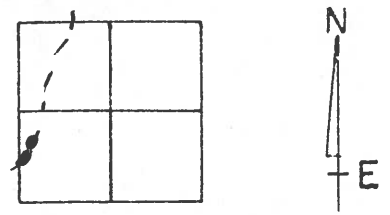
COUNTY HENRY

TOWNSHIP HARRISON

SECTION 18

T 5 N R 7 E

TYPE MONUMENT set P.K. / WASHERS 10-27-92
 ON SURFACE - BELOW Yes
 LEFT - TO PAV'T. - RIGHT Yes
TO EDGE PAVEMENT
 S.L.M. 39+66 39+70



OD.O.T. DISTRICT 2 SURVEY OFFICE

SHEET _____ OF _____

County HENRY S.R. 110

Date 1-5-84

Township HARRISON

Weather CLOUDY, FLURRIES

Section 18

Temp. +33

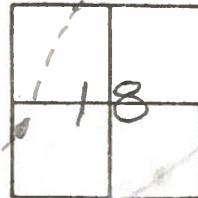
T5N, R7E

Personnel BARWHESEL

HOUSEHOLDER

LOHRKE

2A



Fd PK NAILS @ SURFACE

12.2 to WEP

14.0 to FACE of CURB

ON G

4.00' APART

SET P.K./WASHER

BOTH PTS,

6/13/84

M.P.B.

SLM 39178

+82

