

O.D.O.T. DISTRICT 2 SURVEY OFFICE (USE ONLY)

PERSONNEL

REFERENCE NO. 2 C

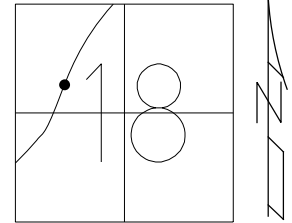
SHEET 6 OF 51

NOTES ASTON DATE 3/4/24
 H.C. NIESE WEATHER CLOUDY
 R.C. ASTON TEMP. 75°

ROUTE SR 110
 COUNTY HENRY
 TOWNSHIP HARRISON
 SECTION 18
 T 5 N R 7 E

DWG BY RHOADES PID 94321

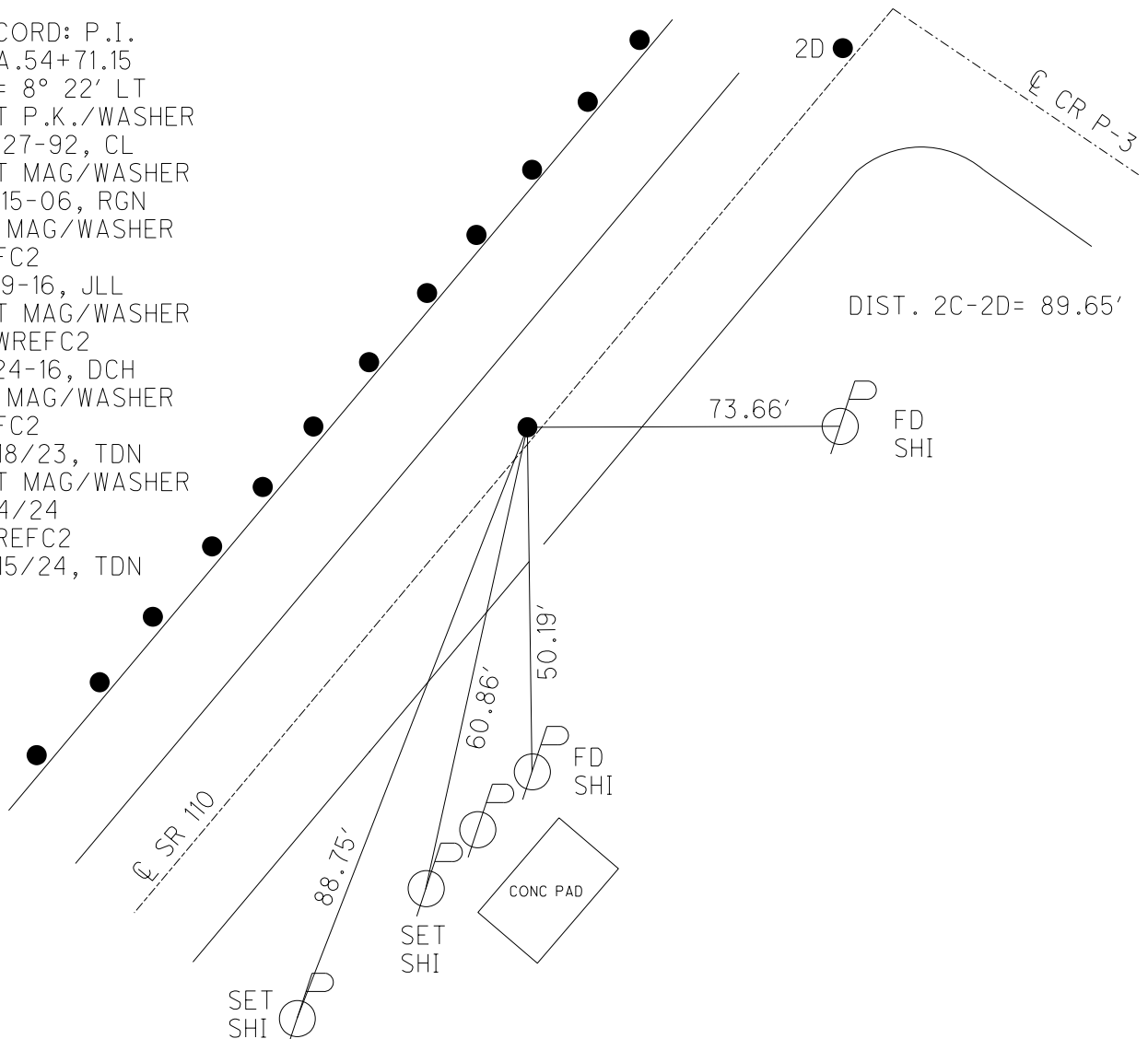
TYPE MONUMENT MAG/WASHER
 ON SURFACE - ~~BELOW~~ ON
 OFFSET \odot PAVEMENT 1.5' LT : ~~RT~~
9.6' TO LT EDGE PAVEMENT
 STATION: 49+44



HORZ. DATUM: NAD83 2011 GEOID: NAVD88 2018

GRID: NORTHING: 632760.852 EASTING: 1526162.326

RECORD: P.I.
 STA. 54+71.15
 $\Delta = 8^\circ 22' \text{ LT}$
 SET P.K./WASHER
 10-27-92, CL
 SET MAG/WASHER
 12-15-06, RGN
 FD MAG/WASHER
 REFC2
 1-29-16, JLL
 SET MAG/WASHER
 NEWREFC2
 8-24-16, DCH
 FD MAG/WASHER
 REFC2
 8/18/23, TDN
 SET MAG/WASHER
 3/4/24
 CKREFC2
 3/15/24, TDN



O.D.O.T. DISTRICT 2 SURVEY OFFICE (USE ONLY)

PERSONNEL

REFERENCE NO. 2 C

SHEET 6 OF 44

NOTES ASTON
 H.C. NIESE
 R.C. RHOADES
AUBLE

DATE 8/18/23
 WEATHER CLEAR
 TEMP. 75°

ROUTE SR 110
 COUNTY HENRY
 TOWNSHIP HARRISON
 SECTION 18
T 5 N R 7 E

DWG BY RHOADES PID 94321

TYPE MONUMENT MAG/WASHER

ON SURFACE - ~~BELOW~~ ON

OFFSET \odot PAVEMENT 1.5' LT : ~~RT~~

9.6' TO LT EDGE PAVEMENT

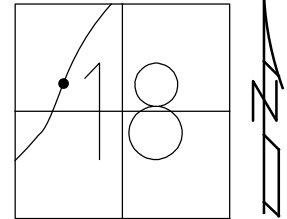
STATION: 49+44

HORZ. DATUM: NAD83 2011

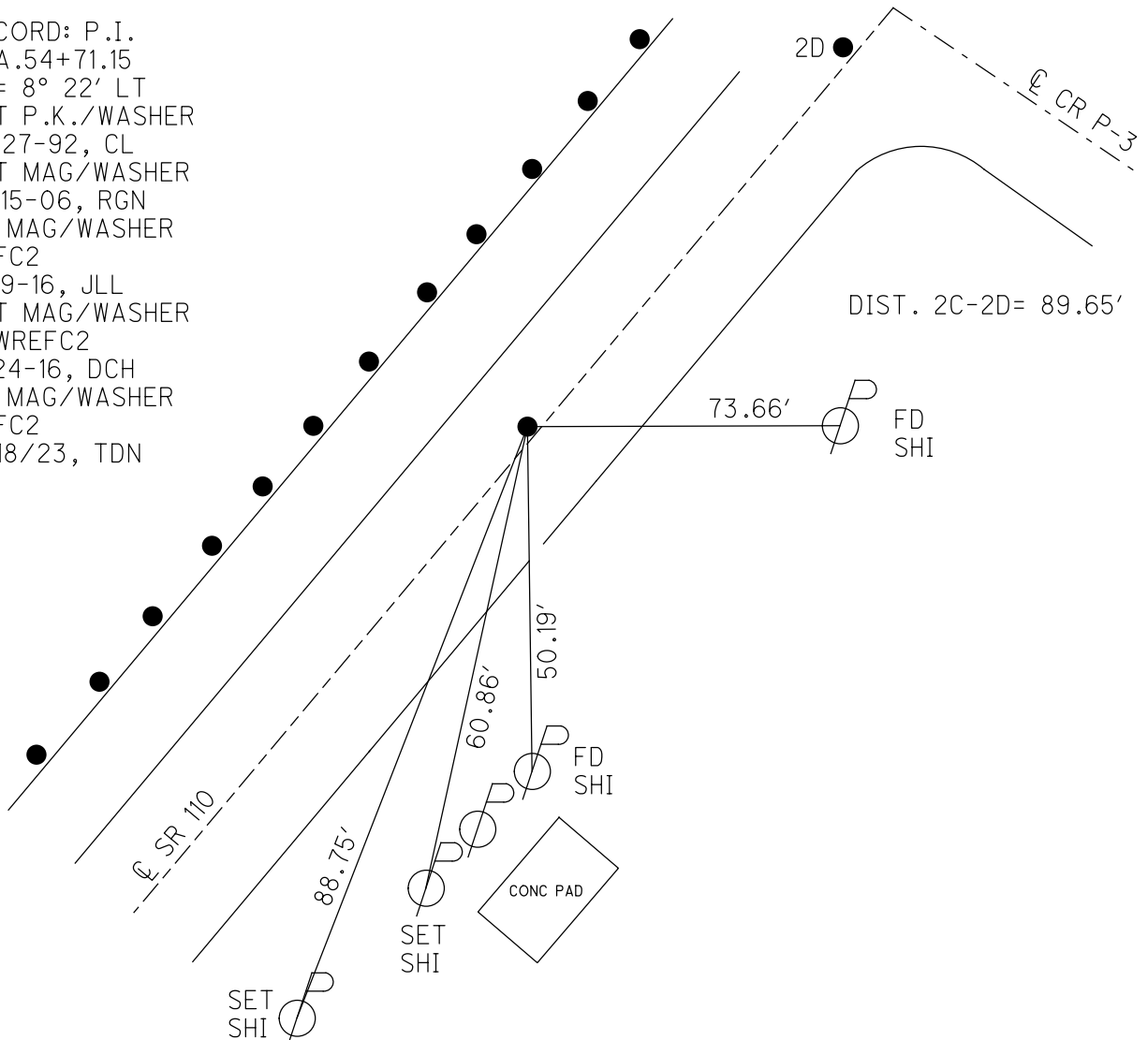
GEOID: NAVD88 2018

GRID: NORTHING: 632760.856

EASTING: 1526162.355



RECORD: P.I.
 STA. 54+71.15
 $\Delta = 8^\circ 22' \text{ LT}$
 SET P.K./WASHER
 10-27-92, CL
 SET MAG/WASHER
 12-15-06, RGN
 FD MAG/WASHER
 REFC2
 1-29-16, JLL
 SET MAG/WASHER
 NEWREFC2
 8-24-16, DCH
 FD MAG/WASHER
 REFC2
 8/18/23, TDN



O.D.O.T. DISTRICT 2 SURVEY OFFICE

PERSONNEL	REFERENCE NO.	2 C	SHEET	5 OF 6	
NOTES	LEU	DATE	08/24/16	ROUTE	SR 110
H.C.	HOMAN	WEATHER	CLEAR	COUNTY	HENRY
R.C.	LEU	TEMP.	71°	TOWNSHIP	HARRISON
				SECTION	18
				T 5 N	R 7 E

TYPE MONUMENT _____ MAG/W _____

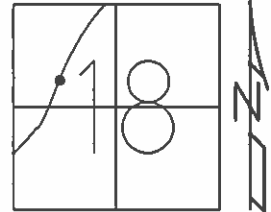
ON SURFACE - ~~BELOW~~ _____ ON _____

LEFT - ~~C PAV'T~~ - RIGHT _____ 1.5'

9.6' TO LT EDGE PAVEMENT

S.L.M. _____ 49+44 _____

GRID: NORTHING: 632760.852 EASTING: 1526162.326

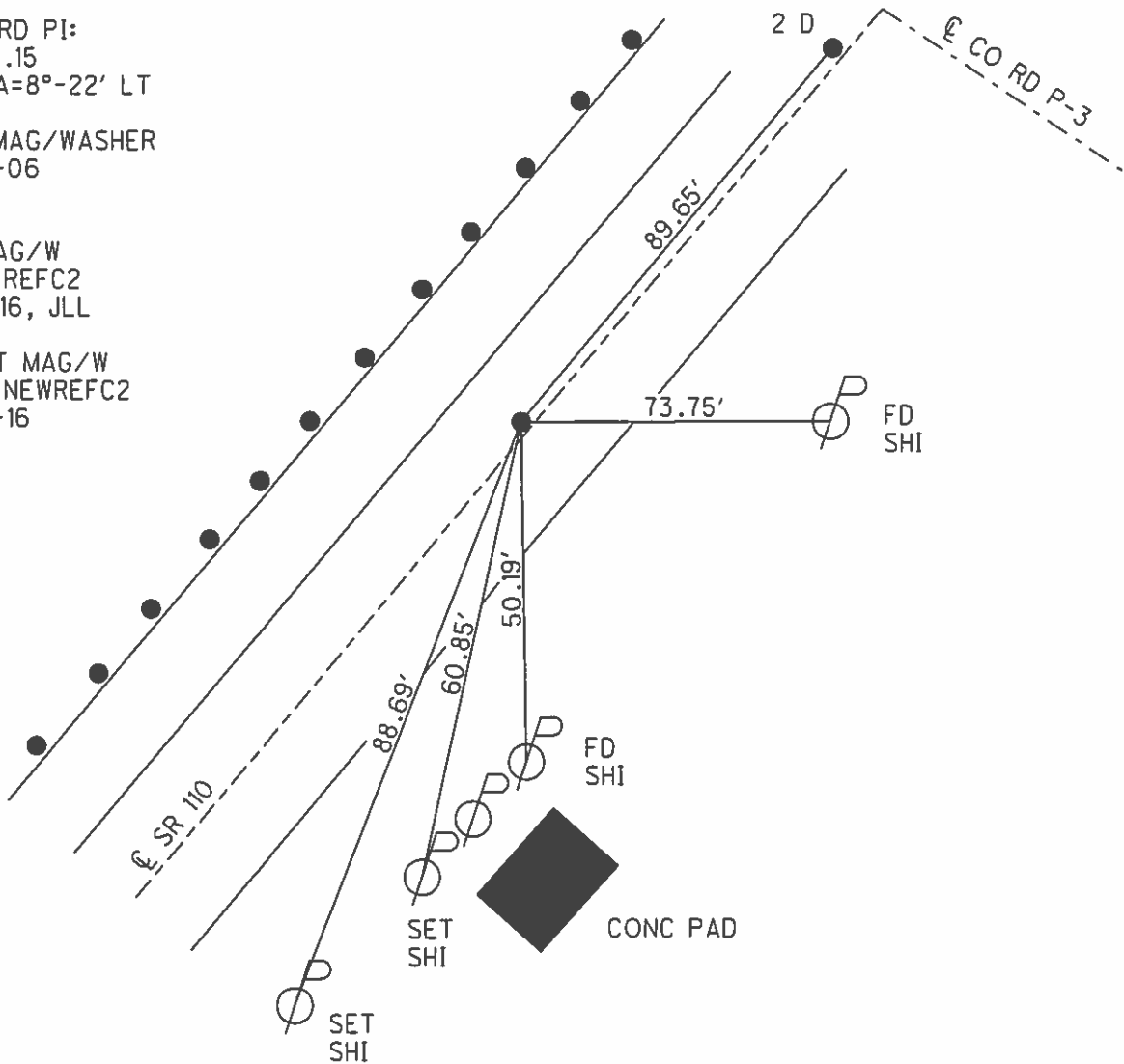


RECORD PI:
54+71.15
DELTA=8°-22' LT

SET MAG/WASHER
12-15-06
RGN

FD MAG/W
GPS, REFC2
1-29-16, JLL

RESET MAG/W
GPS, NEWREFC2
8-24-16



O.D.O.T. DISTRICT 2 SURVEY OFFICE

PERSONNEL _____

REFERENCE NO. _____

SHEET 5 OF 7

NOTES BARNHISEL

DATE 9/14/06

ROUTE S.R. 110

H.C. CANTERBURY

WEATHER CLOUDY

COUNTY HENRY

R.C. BARNHISEL

TEMP. +70

TOWNSHIP HARRISON

SECTION 18

T 5 N R 7 E

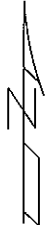
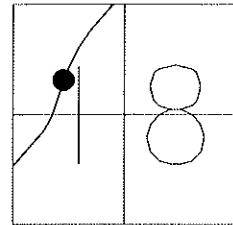
TYPE MONUMENT SM RR SPIKE

~~ON SURFACE~~ - BELOW 2"

LEFT - Q PAV'T - ~~RIGHT~~ 1.5'

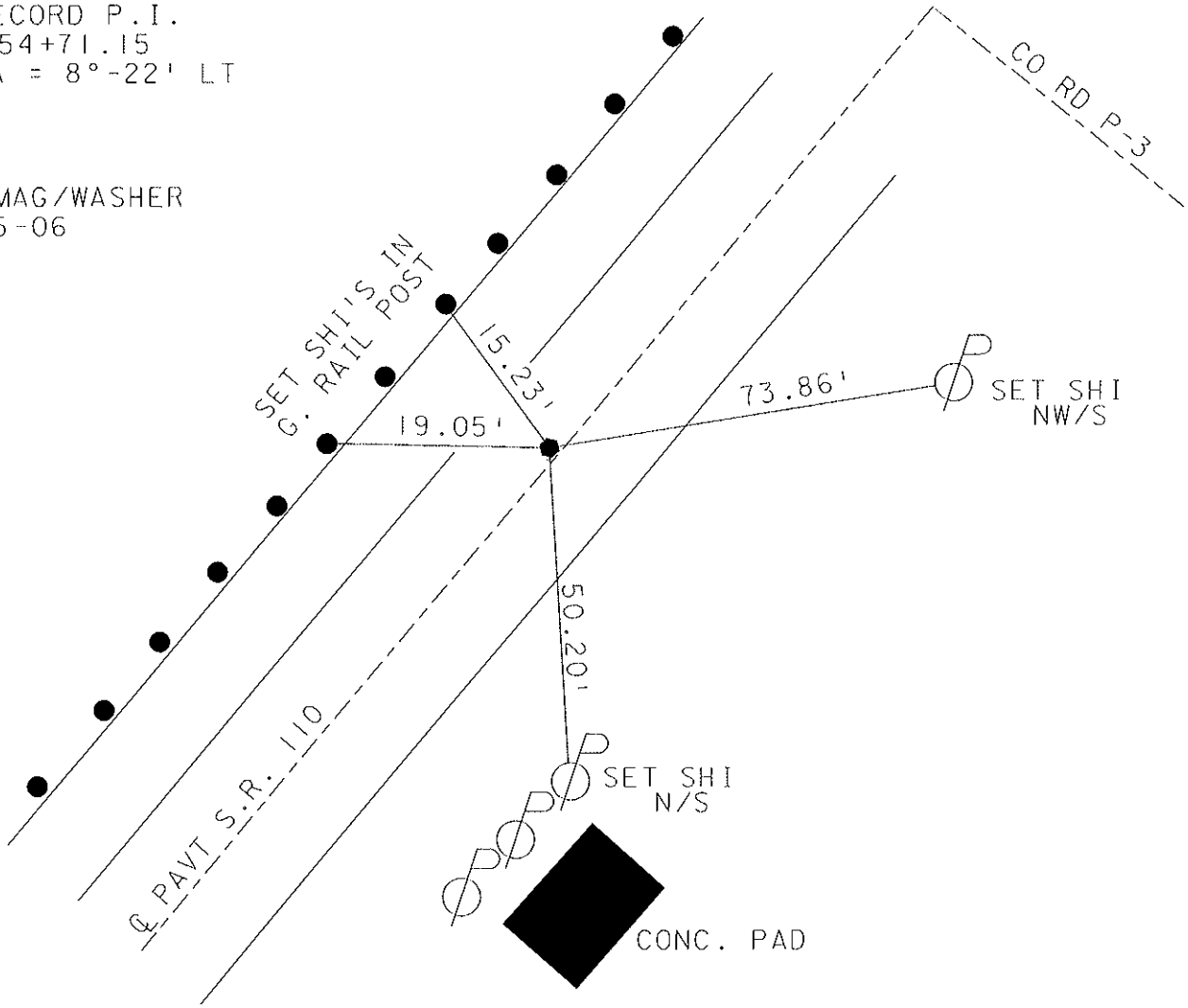
9.6' TO LT EDGE PAVEMENT

S.L.M. 49+44



RECORD P.I.
54+71.15
DELTA = 8°-22' LT

SET MAG/WASHER
12-15-06
RGN



O.D.O.T. DISTRICT 2 SURVEY OFFICE

PERSONNEL

REFERENCE NO. 2C

SHEET 6 OF 34

NOTES LOEHRKE MB

H.C. CURTIS MC

R.C. ROMETO MB

DATE 5-27-92 9/14/06

WEATHER CLEAR cloudy

TEMP. 60 +7

ROUTE S.R. 110

COUNTY HENRY

TOWNSHIP HARRISON

SECTION 18

T5 N R 7 E

TYPE MONUMENT Sm. R.R. Spike

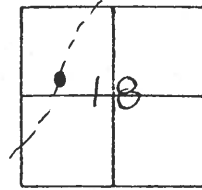
ON SURFACE - BELOW Yes 2"

LEFT - & PAV'T. - RIGHT 1.9 1.5

9.6 TO Lt EDGE PAVEMENT

S.L.M. 49+44

Set P.K.
WASHER
10-27-92

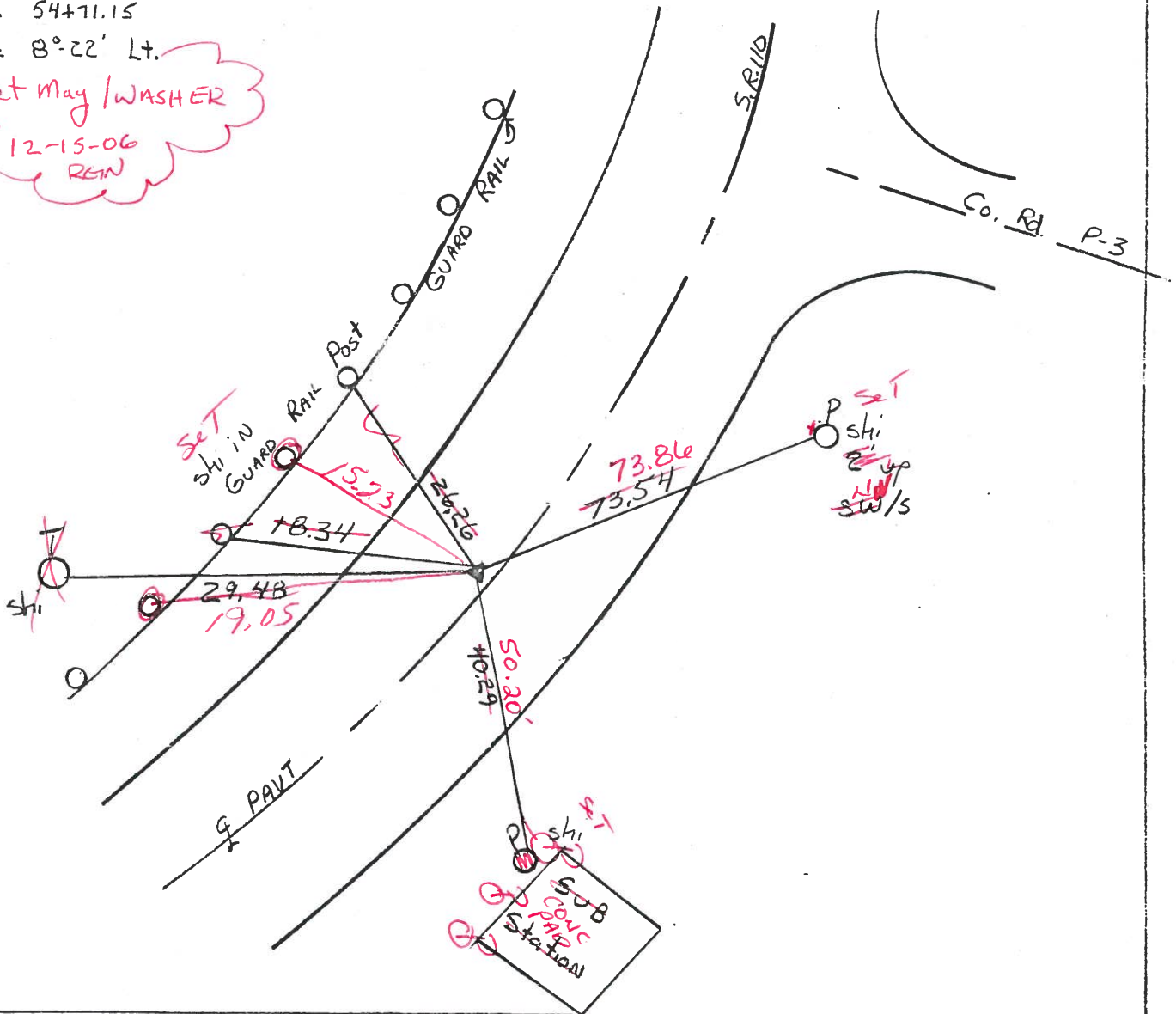


Rec. P.I.

Sta. 54+71.15

$\Delta = 8^{\circ}22' Lt.$

Set May / WASHER
12-15-06
REN



O.D.O.T. DISTRICT 2 SURVEY OFFICE

PERSONNEL _____

REFERENCE NO. 2C

SHEET 6 OF 34

NOTES LOEHRKE

H.C. CURTIS

R.C. ROMETO

DATE 5-27-92

WEATHER CLEAR

TEMP. +60

ROUTE S.R. 110

COUNTY HENRY

TOWNSHIP HARRISON

SECTION 18

T5 N R 7 E

Set P.K.
WASHER
10-27-92

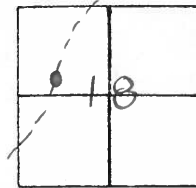
TYPE MONUMENT Sm. R.R. Spike

ON SURFACE - BELOW Yes

LEFT- & PAV'T. - RIGHT 1.9

9.8 TO Lt EDGE PAVEMENT

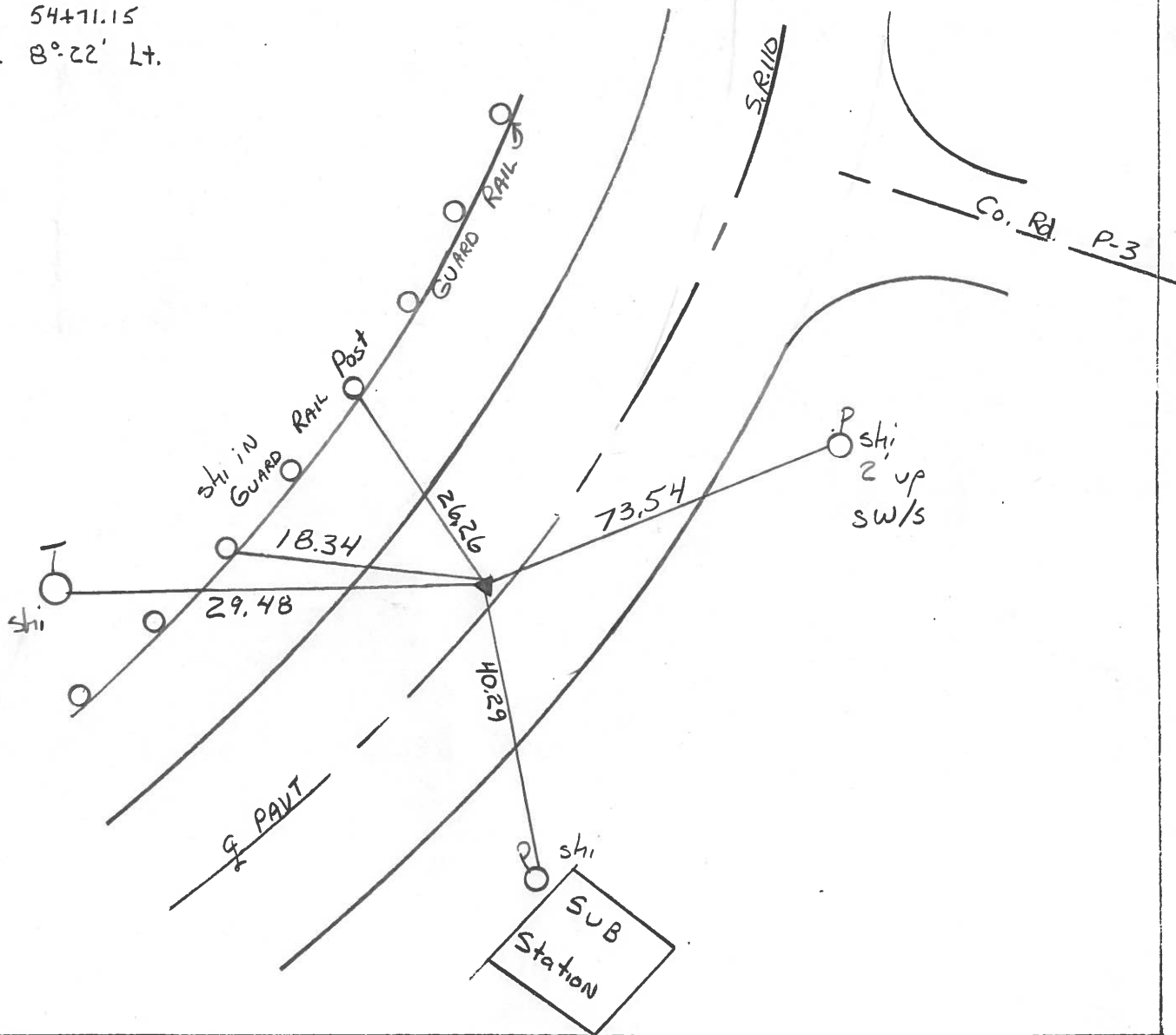
S.L.M. 49+44



Rec. P.I.

Sta. 54+71.15

$\Delta = 8^{\circ}22' \text{ Lt.}$



Q.D.O.T. DISTRICT 2 SURVEY OFFICE

SHEET _____ OF _____

County HENRY S.R. 110

Date 1-5-84

Township HARRISON

Weather CLOUDY

Section 18

Temp. +31

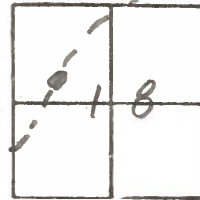
T5N, R7E

Personnel BARNHISEL

HOUSEHOLDER

LOEHRKE

2C



PI STA. 54471.15

SET SMALL R.R. SPK. SLM 49156
6/13/84 M.D.B.

Fd 5/8" Pipe 1" Below SURFACE

9.8' to WEP

13.8 to EEP

1.6 LF of ϕ SR110

$\Delta = 8^{\circ} - 22' - LT (Rec.)$

