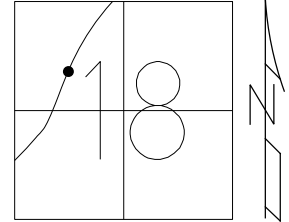


O.D.O.T. DISTRICT 2 SURVEY OFFICE (USE ONLY)

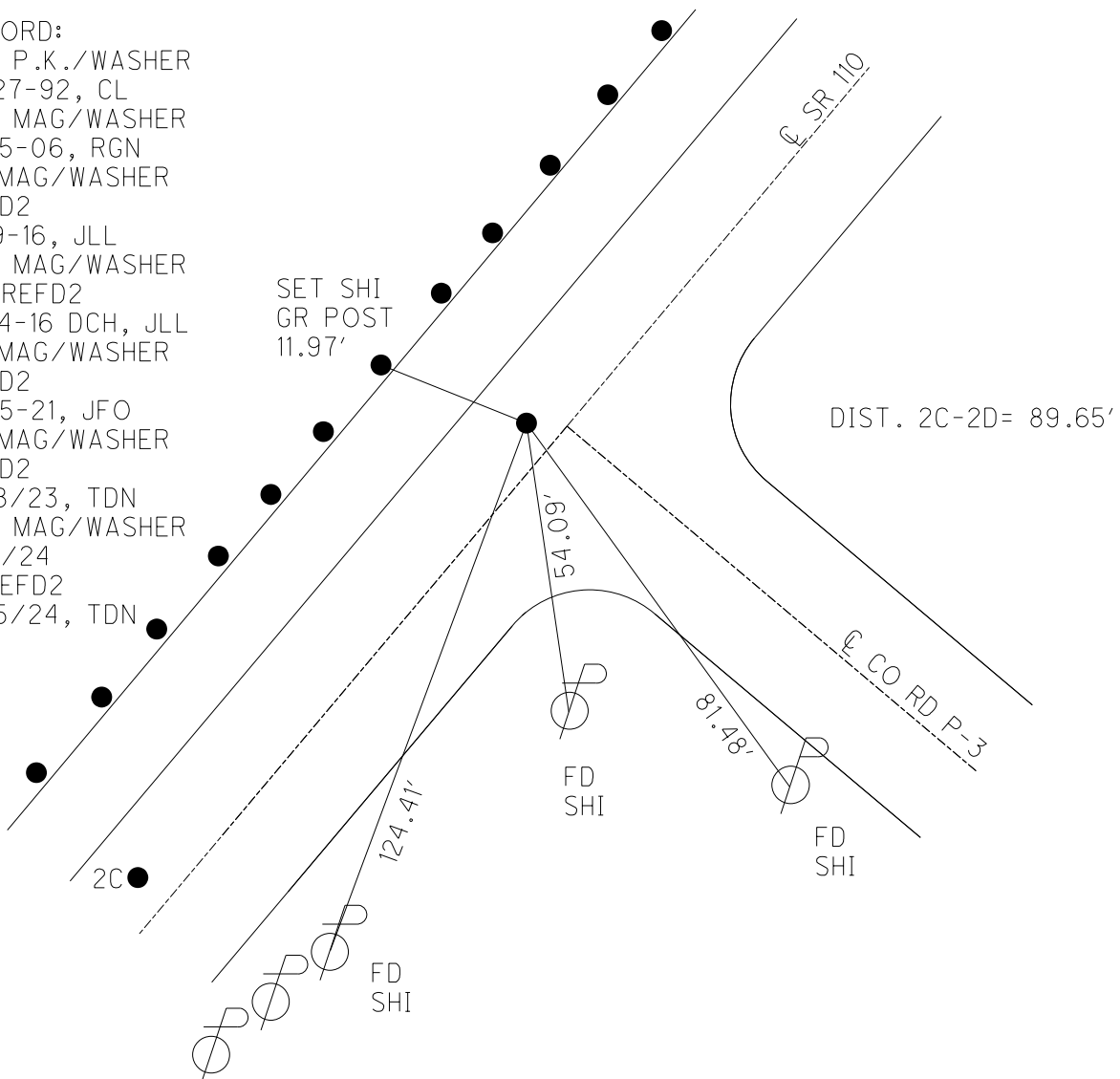
PERSONNEL _____ REFERENCE NO. 2 D SHEET 7 OF 51
 NOTES ASTON DATE 3/4/24 ROUTE SR 110
 H.C. NIESE WEATHER BREEZY COUNTY HENRY
 R.C. ASTON TEMP. 60° TOWNSHIP HARRISON
 SECTION 18
 DWG BY RHOADES PID 94321 T 5 N R 7 E

TYPE MONUMENT MAG/WASHER
 ON SURFACE - ~~BELOW~~ ON
 OFFSET \bar{C} PAVEMENT 5.0' LT : ~~RT~~
5.6' TO LT EDGE PAVEMENT
 S.L.M. 50+49.14



HORIZ.DATUM: NAD83 (2011) GEOID: NAVD88 2018
 GRID: NORTHING: 632840.862 EASTING: 1526202.745

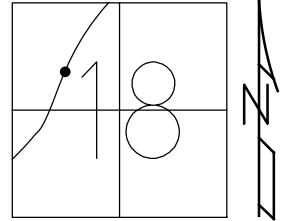
- RECORD:
 SET P.K./WASHER
 10-27-92, CL
 SET MAG/WASHER
 12-15-06, RGN
 FD MAG/WASHER
 REFD2
 1-29-16, JLL
 SET MAG/WASHER
 NEWREFD2
 8-24-16 DCH, JLL
 FD MAG/WASHER
 REFD2
 5-05-21, JFO
 FD MAG/WASHER
 REFD2
 8/18/23, TDN
 SET MAG/WASHER
 3/4/24
 CKREFD2
 3/15/24, TDN



O.D.O.T. DISTRICT 2 SURVEY OFFICE (USE ONLY)

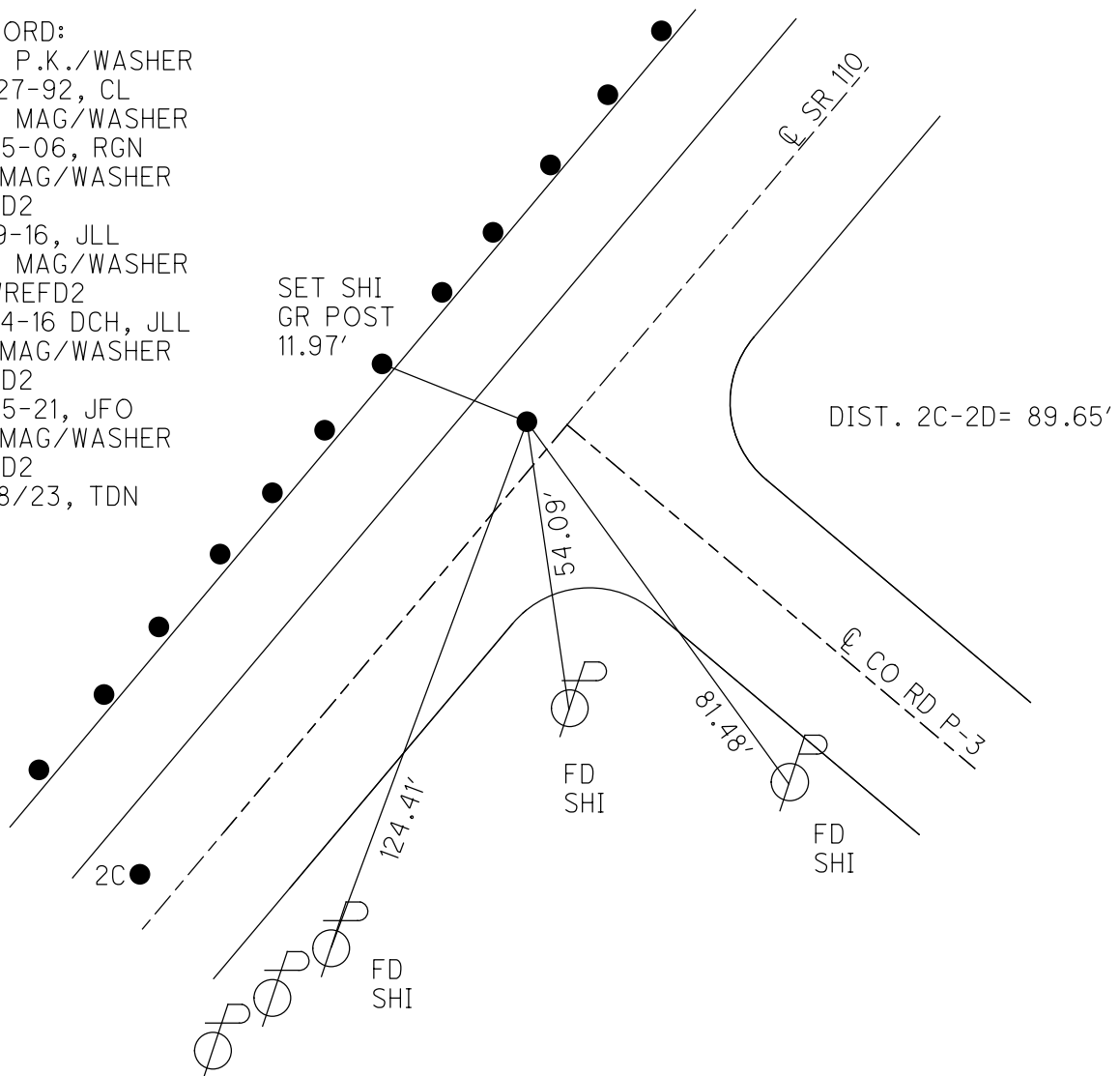
PERSONNEL _____ REFERENCE NO. 2 D SHEET 7 OF 44
 NOTES ASTON DATE 8/18/23 ROUTE SR 110
 H.C. NIESE WEATHER CLEAR COUNTY HENRY
 R.C. RHOADES TEMP. 75° TOWNSHIP HARRISON
AUBLE SECTION 18
 DWG BY RHOADES PID 94321 T 5 N R 7 E

TYPE MONUMENT _____ MAG/WASHER _____
 ON SURFACE - ~~BELOW~~ _____ ON _____
 OFFSET \odot PAVEMENT 5.0' LT : ~~RT~~
5.6' TO LT EDGE PAVEMENT
 S.L.M. 50+49.14



HORZ.DATUM: NAD83 (2011) GEOID: NAVD88 2018
 GRID: NORTHING: 632840.857 EASTING: 1526202.794

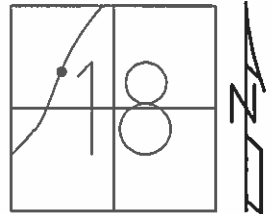
RECORD:
 SET P.K./WASHER
 10-27-92, CL
 SET MAG/WASHER
 12-15-06, RGN
 FD MAG/WASHER
 REFD2
 1-29-16, JLL
 SET MAG/WASHER
 NEWREFD2
 8-24-16 DCH, JLL
 FD MAG/WASHER
 REFD2
 5-05-21, JFO
 FD MAG/WASHER
 REFD2
 8/18/23, TDN



O.D.O.T. DISTRICT 2 SURVEY OFFICE

PERSONNEL	REFERENCE NO.	<u>2 D</u>	SHEET	<u>6</u>	OF	<u>6</u>
NOTES	<u>LEU</u>	DATE	<u>08/24/16</u>	ROUTE	<u>SR 110</u>	
H.C.	<u>HOMAN</u>	WEATHER	<u>CLEAR</u>	COUNTY	<u>HENRY</u>	
R.C.	<u>LEU</u>	TEMP.	<u>71°</u>	TOWNSHIP	<u>HARRISON</u>	
				SECTION	<u>18</u>	
				<u>T 5 N</u>	<u>R 7 E</u>	

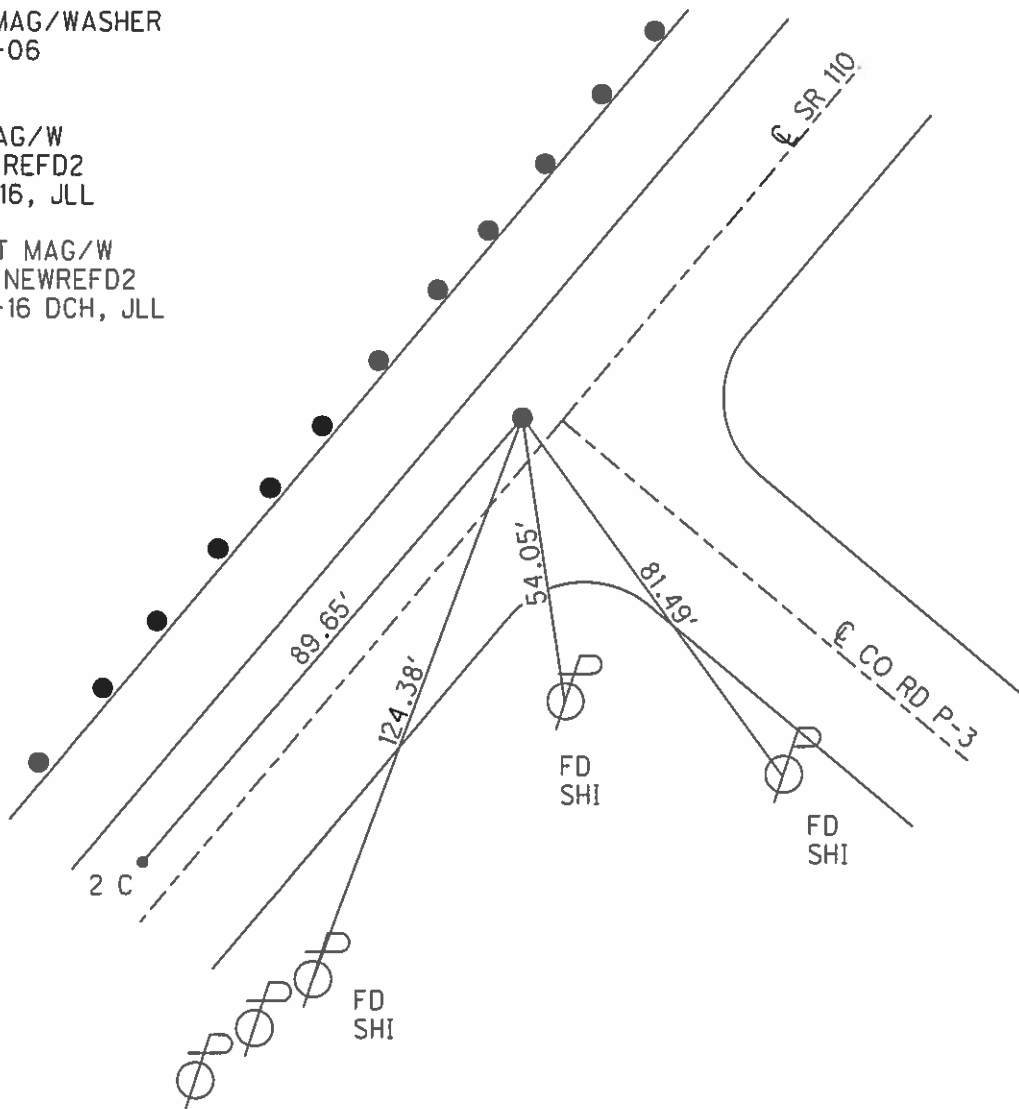
TYPE MONUMENT MAG/W
 ON SURFACE - ~~BELOW~~ ON
 LEFT - ~~C PAV'T~~ - ~~RIGHT~~ 5.0'
5.6' TO LT EDGE PAVEMENT
 S.L.M. 50+34
 GRID: NORTHING: 632840.876 EASTING: 1526202.779



SET MAG/WASHER
 12-15-06
 RGN

FD MAG/W
 GPS, REFD2
 1-29-16, JLL

RESET MAG/W
 GPS, NEWREFD2
 8-24-16 DCH, JLL



O.D.O.T. DISTRICT 2 SURVEY OFFICE

PERSONNEL

REFERENCE NO. _____

SHEET 6 OF 7

NOTES BARNHISEL

DATE 9/14/06

ROUTE S.R. 110

H.C. CANTERBURY

WEATHER CLOUDY

COUNTY HENRY

R.C. BARNHISEL

TEMP. +70

TOWNSHIP HARRISON

SECTION 18

T 5 N R 7 E

TYPE MONUMENT SM RR SPIKE

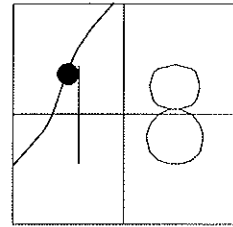
~~ON SURFACE~~ - BELOW 2"

LEFT - Q PAV'T - ~~RIGHT~~ 5.0'

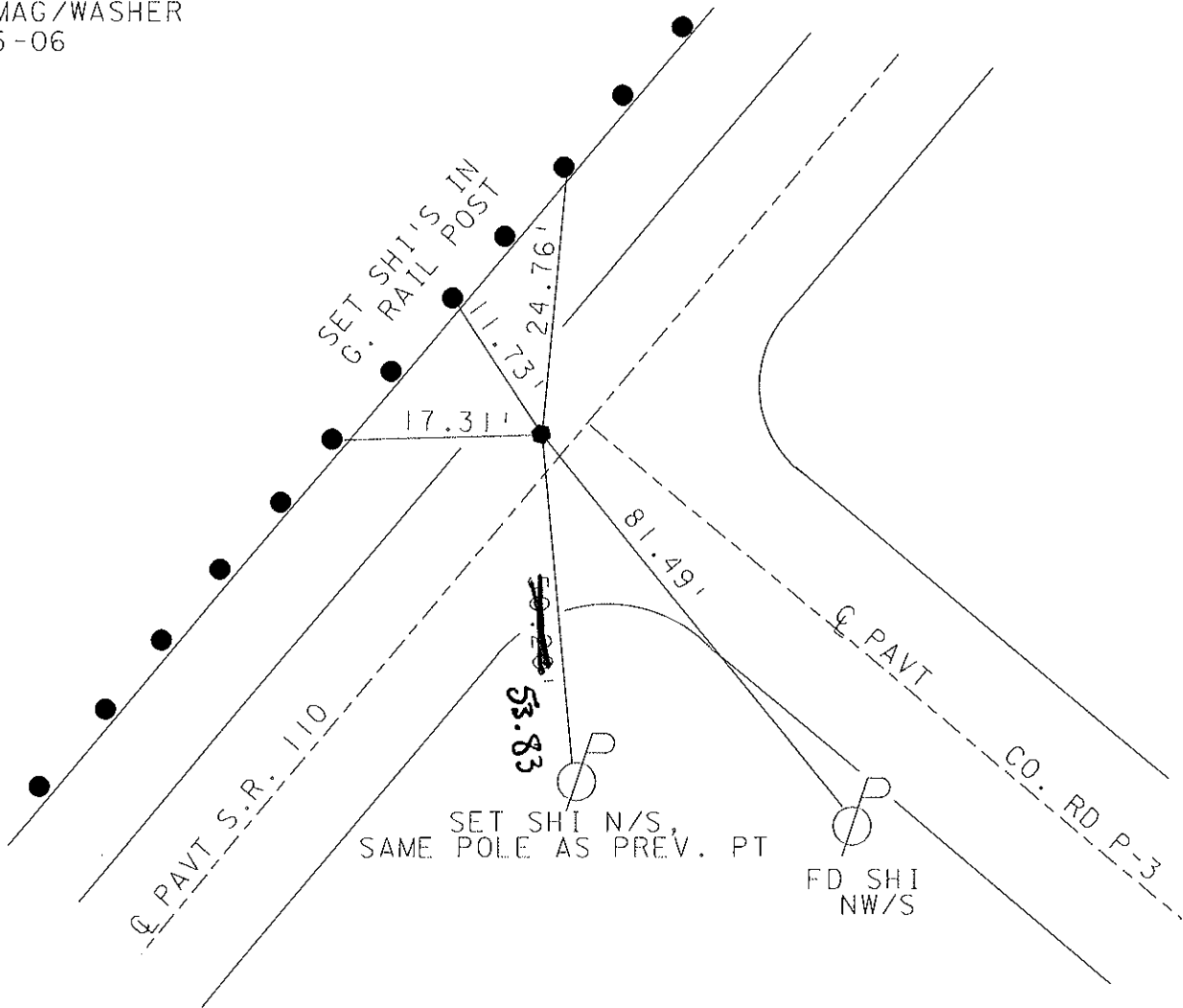
5.6' TO LT. EDGE PAVEMENT

S.L.M. 50+34

4' WEST OF CENTERLINE SOUTH



SET MAG/WASHER
12-15-06
RGN

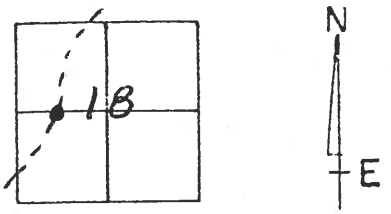


O.D.O.T. DISTRICT 2 SURVEY OFFICE

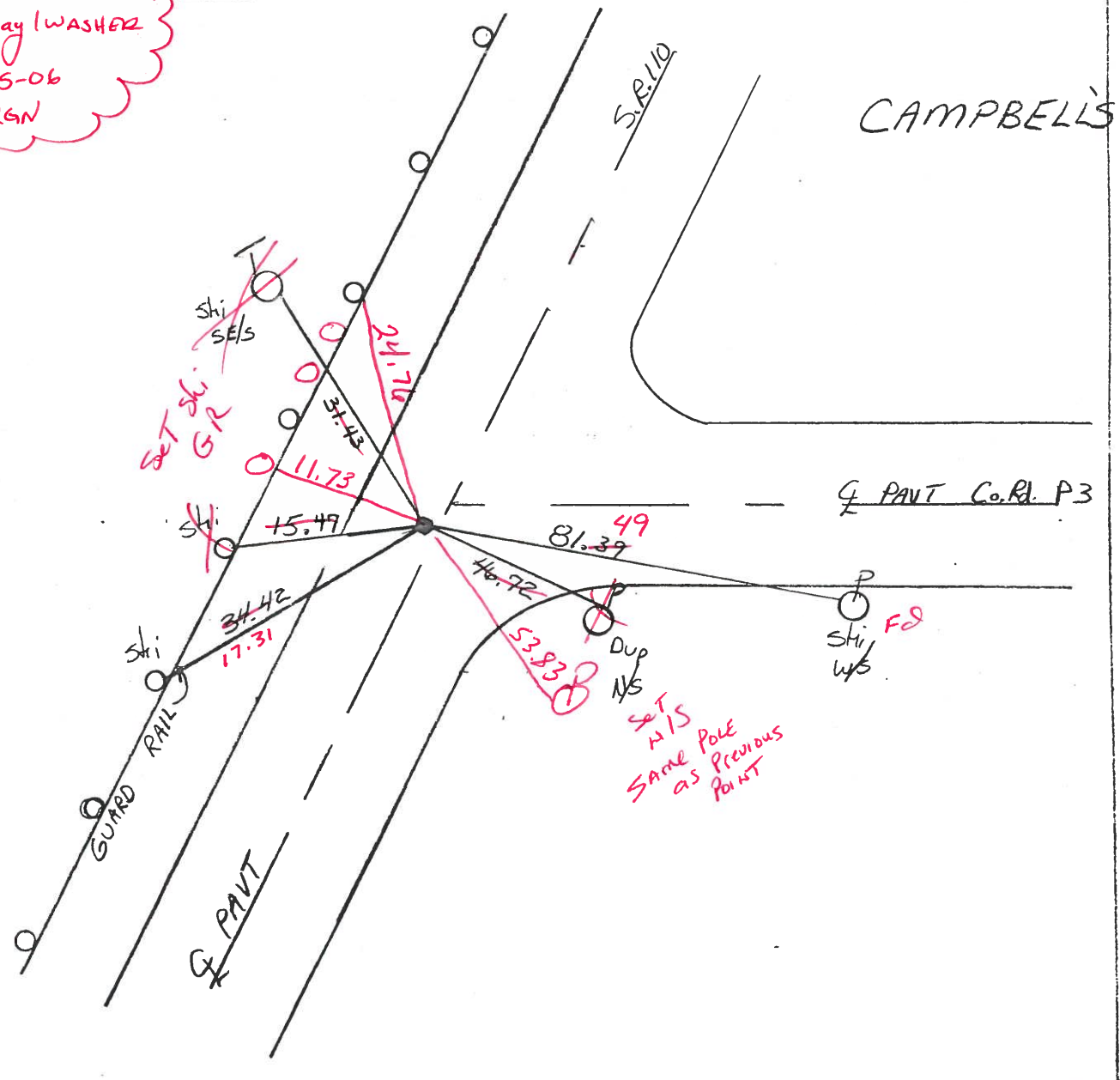
PERSONNEL _____ REFERENCE NO. 20 SHEET 7 OF 34
 NOTES Loehrke MB 9/14/06
 H.C. CURTIS MC DATE 5-27-92 ROUTE S.R. 110
 R.C. Romero MB WEATHER CLEAR cloudy COUNTY HENRY
 _____ TEMP. 160 +70 TOWNSHIP HARRISON
 _____ SECTION 18
 _____ T.S. N R 7 E

TYPE MONUMENT Sm. R.R. Spike
 ON SURFACE - BELOW Yes 2"
 LEFT- & PAV'T. - RIGHT 4.5 5.0
5.6' 6.5' TO Lt EDGE PAVEMENT
 S.L.M. 50+34 4' WEST OF E South

Set P.K.
 WASHER
 10-27-92



Set May WASHER
 12-15-06
 RGN



O.D.O.T. DISTRICT 2 SURVEY OFFICE

PERSONNEL

REFERENCE NO. 2D SHEET 7 OF 34

NOTES LOEHRKE

H.C. CURTIS

R.C. ROMETO

DATE 5-27-92

WEATHER CLEAR

TEMP. 160

ROUTE S.R. 110

COUNTY HENRY

TOWNSHIP HARRISON

SECTION 18

T. S N. R 7 E

set P.K.
WASHER
10-27-92

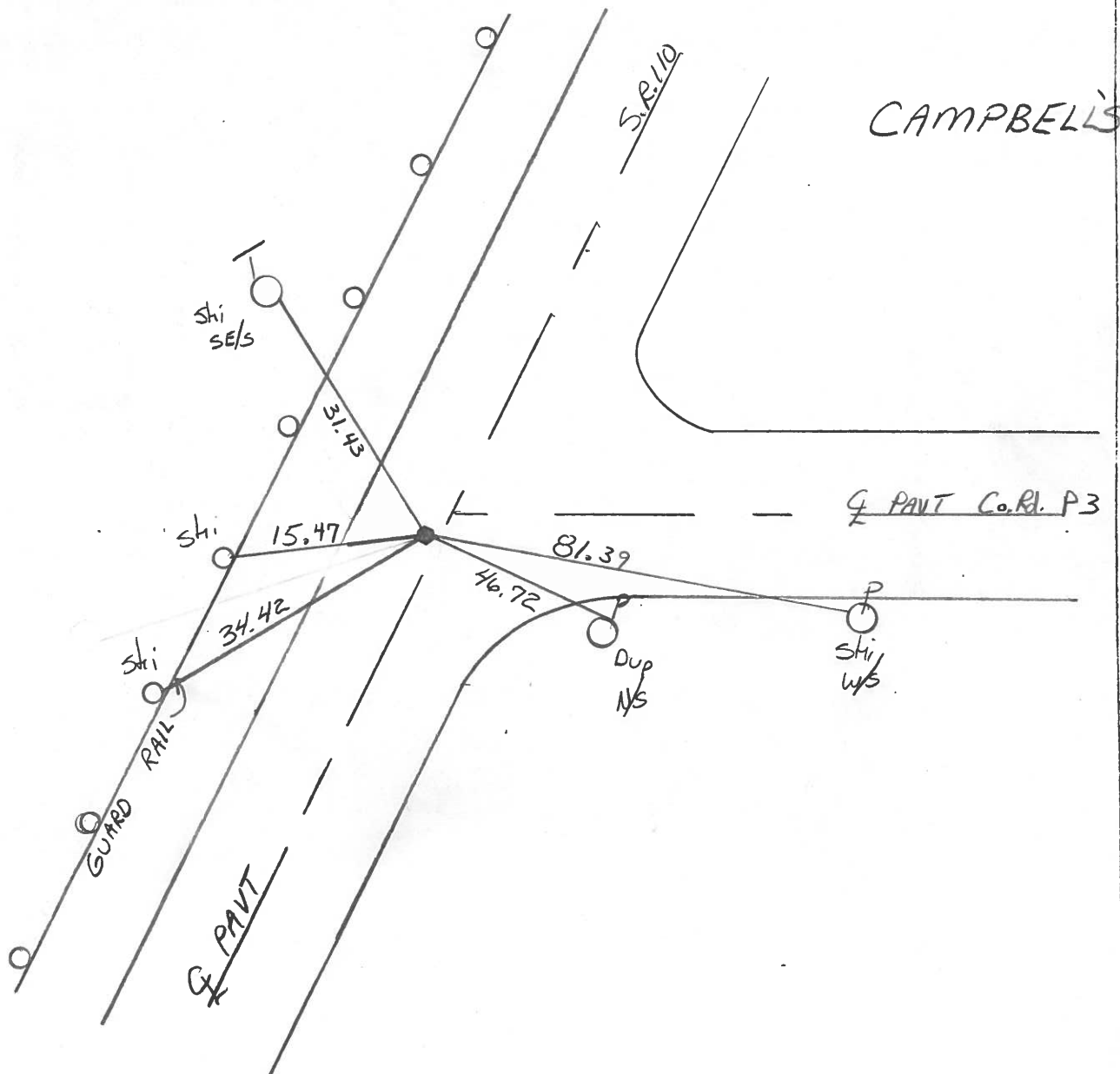
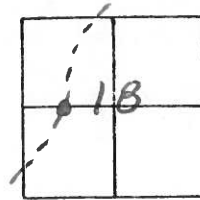
TYPE MONUMENT Sm. R.R. Spike

ON SURFACE - BELOW Yes

LEFT-☉ PAV'T. - RIGHT 4.5

6.5 TO Lt EDGE PAVEMENT

S.L.M. 50+34



PERSONNEL TITLE PERSONNEL TITLE
 Red Beach
 Newcomb
 Knappe

COUNTY HENRY DATE Oct. 1972

S. R. 110 WEATHER

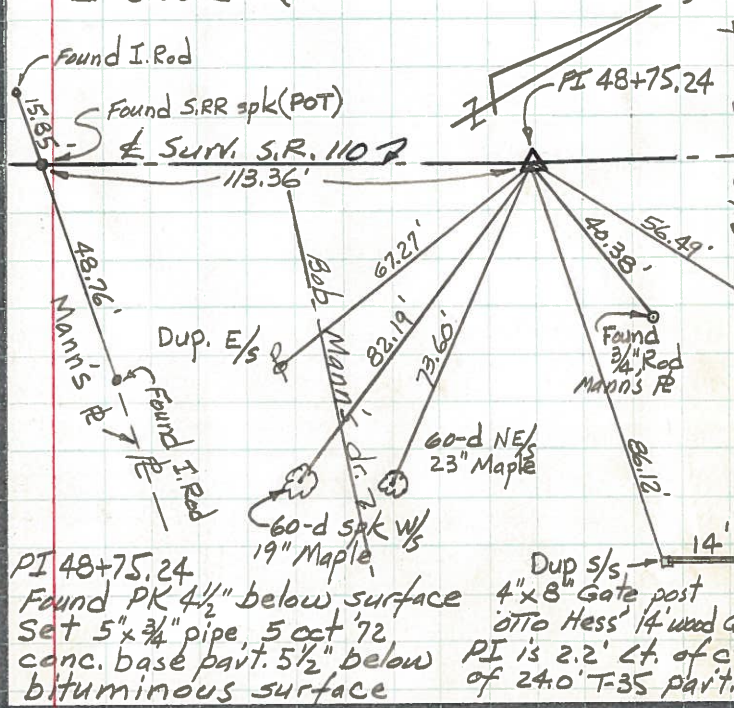
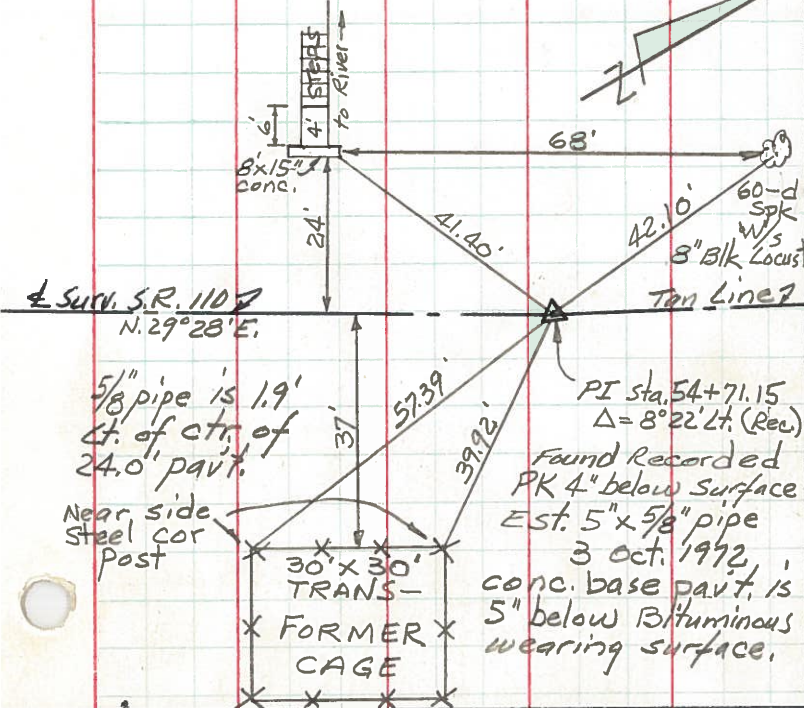
SEC. Napoleon TEMP.

CONTROL POINTS

DESCRIPTION LEFT CENTER LINE RIGHT JOB NO.

PI sta. 54+71.15 ± Survey (1957±)

PI sta. 48+75.24 ± Survey
 $\Delta = 6^{\circ}00'$ Lt. (Meas. $5^{\circ}59.6'$ Lt. 5 Oct. 72)



Jct. ± Sur. S.R. 110 ± & Top Rd. *P-3

POT Sta. 65+27.20 - 1.42' Rt.
 Southerly R/W Line of DT&I RR

