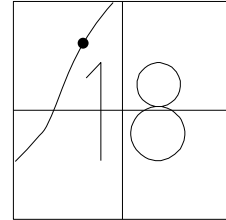


O.D.O.T. DISTRICT 2 SURVEY OFFICE (USE ONLY)

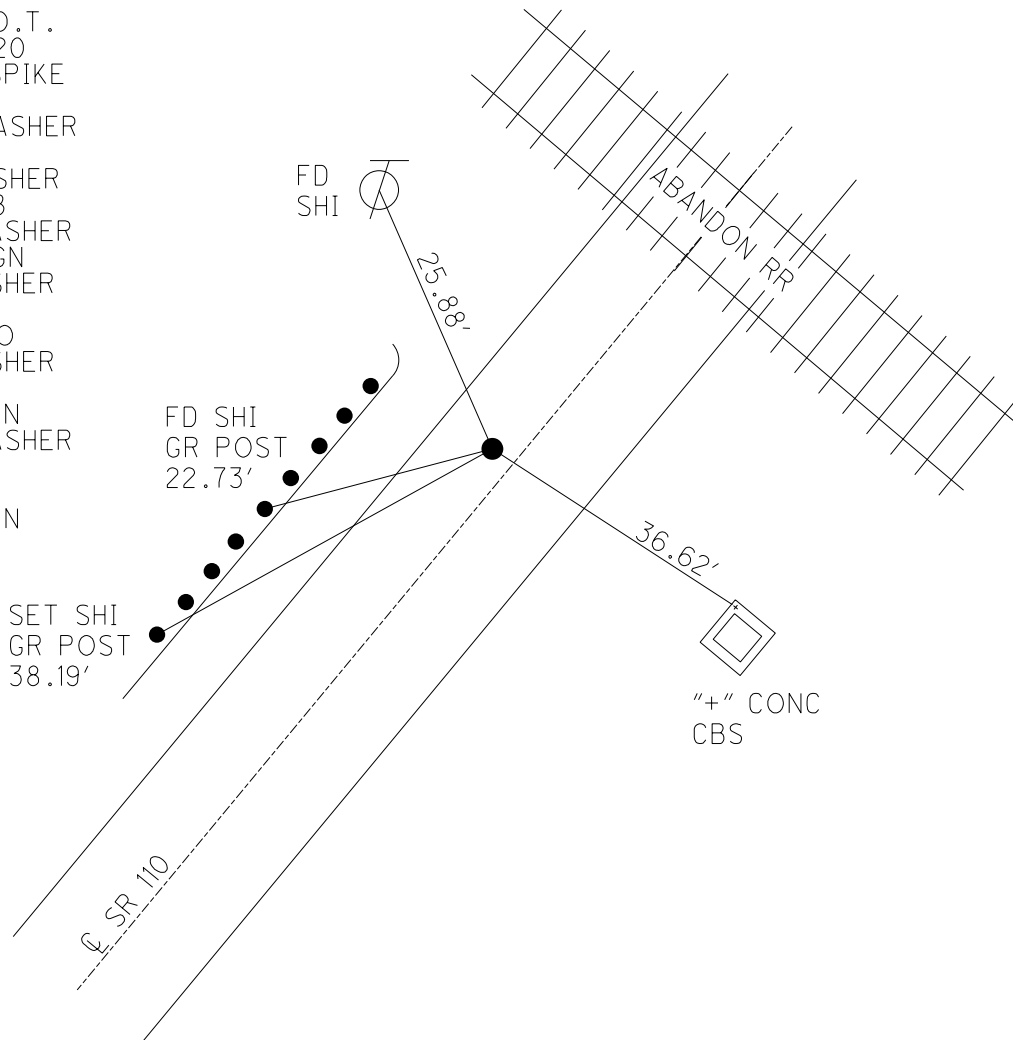
PERSONNEL _____ REFERENCE NO. 4 SHEET 8 OF 51
 NOTES ASTON DATE 3/4/24 ROUTE SR 110
 H.C. NIESE WEATHER BREEZY COUNTY HENRY
 R.C. ASTON TEMP. 60° TOWNSHIP HARRISON
 SECTION 18
 DWG BY RHOADES PID 94321 T 5 N R 7 E

TYPE MONUMENT MAG/WASHER
 ON SURFACE - ~~BELOW~~ ON
 OFFSET \odot PAVEMENT 2.9' LT : ~~RT~~
8.6' TO LT EDGE PAVEMENT
 S.L.M. 60+15.58



HORIZ.DATUM: NAD83 (2011) GEOID: NAVD88 2018
 GRID: NORTHING: 633702.173 EASTING: 1526641.064

RECORD: P.O.T.
 STA.65+27.20
 FD SM.R.R.SPIKE
 5-27-92, CL
 SET P.K./WASHER
 10-27-92
 FD P.K./WASHER
 9/14/06, MB
 SET MAG/WASHER
 12-15-06, RGN
 FD MAG/WASHER
 REF4
 5-05-21, JFO
 FD MAG/WASHER
 REF4
 8/18/23, TDN
 SET MAG/WASHER
 3/4/24
 CKREF4
 3/15/24, TDN

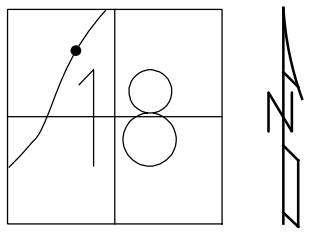


O.D.O.T. DISTRICT 2 SURVEY OFFICE (USE ONLY)

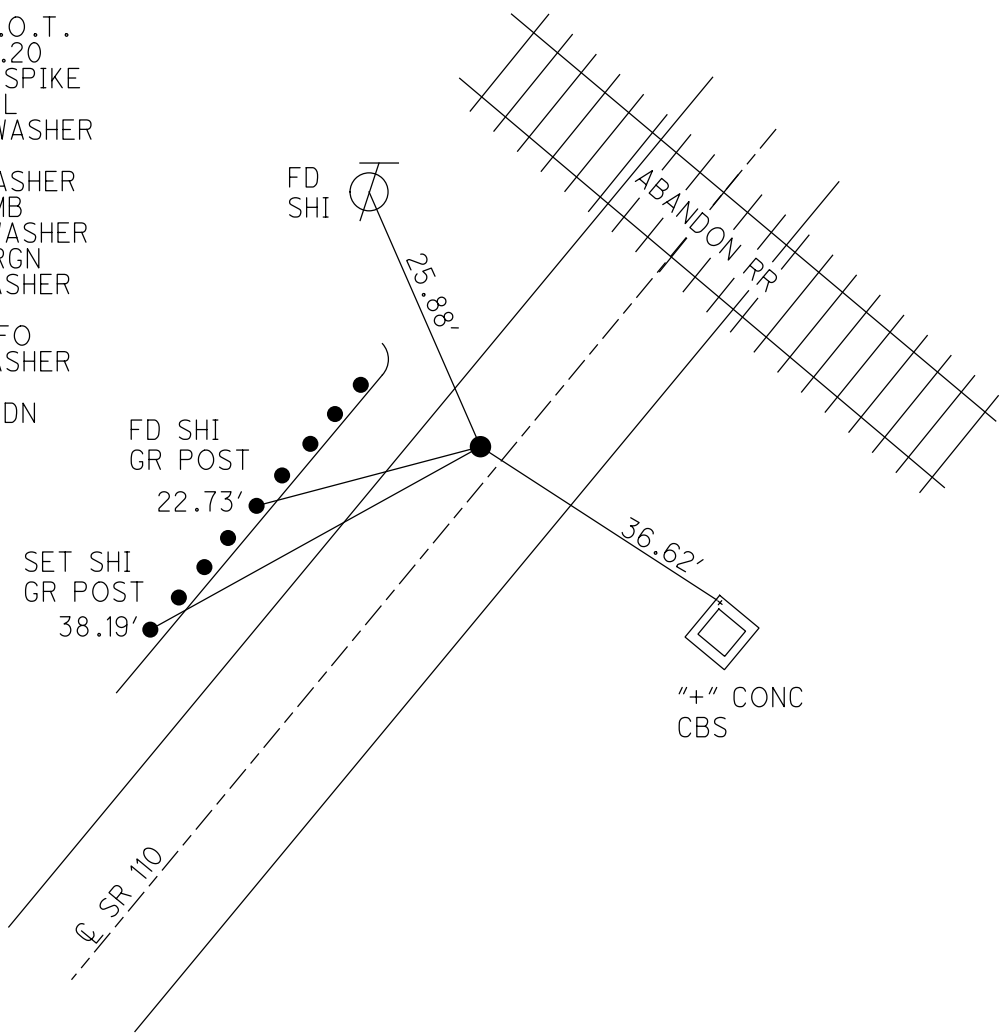
PERSONNEL _____ REFERENCE NO. 4 SHEET 8 OF 44
 NOTES ASTON DATE 8/18/2 ROUTE SR 110
 H.C. NIESE WEATHER CLEAR COUNTY HENRY
 R.C. RHOADES TEMP. 75° TOWNSHIP HARRISON
AUBLE SECTION 18
 DWG BY RHOADES PID 94321 T 5 N R 7 E

TYPE MONUMENT _____ MAG/WASHER _____
 ON SURFACE - ~~BELOW~~ _____ ON _____
 OFFSET \bar{C} PAVEMENT 2.9' LT : ~~RT~~
8.6' TO LT EDGE PAVEMENT
 S.L.M. 60+15.58

HORIZ.DATUM: NAD83 (2011) GEOID: NAVD88 2018
 GRID: NORTHING: 633702.210 EASTING: 1526641.058



RECORD: P.O.T.
 STA. 65+27.20
 FD SM.R.R.SPIKE
 5-27-92, CL
 SET P.K./WASHER
 10-27-92
 FD P.K./WASHER
 9/14/06, MB
 SET MAG/WASHER
 12-15-06, RGN
 FD MAG/WASHER
 REF4
 5-05-21, JFO
 FD MAG/WASHER
 REF4
 8/18/23, TDN



\"+\" CONC
 CBS

O.D.O.T. DISTRICT 2 SURVEY OFFICE

PERSONNEL _____

REFERENCE NO. _____

SHEET 7 OF 7

NOTES BARNHISEL

DATE 9/14/06

ROUTE S.R. 110

H.C. CANTERBURY

WEATHER CLOUDY

COUNTY HENRY

R.C. BARNHISEL

TEMP. +70

TOWNSHIP HARRISON

SECTION 18

T 5 N R 7 E

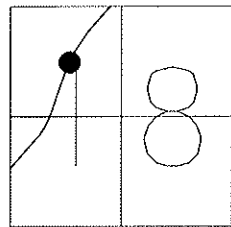
TYPE MONUMENT P.K. / WASHER

ON SURFACE - ~~BELOW~~ YES

LEFT - Q PAV'T - ~~RIGHT~~ 2.9'

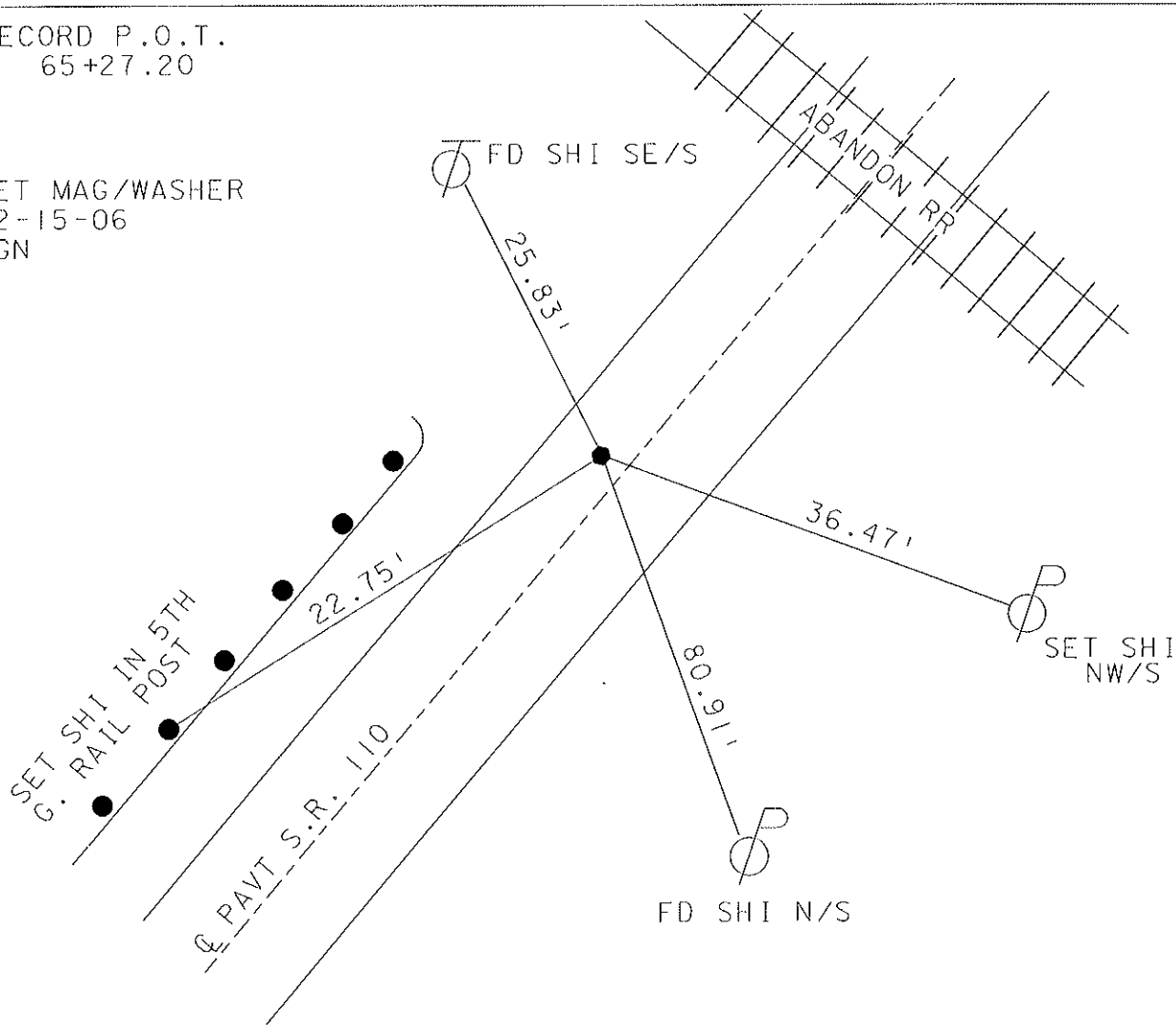
8.6' TO LT EDGE PAVEMENT

S.L.M. 60+01



RECORD P.O.T.
65+27.20

SET MAG/WASHER
12-15-06
RGN



O.D.O.T. DISTRICT 2 SURVEY OFFICE

PERSONNEL

REFERENCE NO. 4

SHEET 8 OF 34

NOTES LOEHRKE MB

9/14/04

H.C. CURTIS MC

DATE 5-27-92

ROUTE S.R. 110

R.C. ROMETO MB

WEATHER CLEAR cloudy

COUNTY HENRY

TEMP. +60 +70

TOWNSHIP HARRISON

SECTION 18

Set P.K. WASHER
10-27-92

T.S. N 7 E

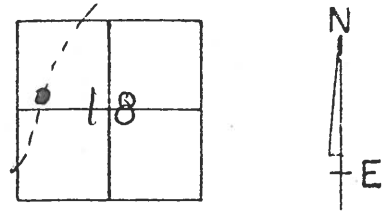
TYPE MONUMENT Sm. R.R. Spike

ON SURFACE - BELOW Yes ✓

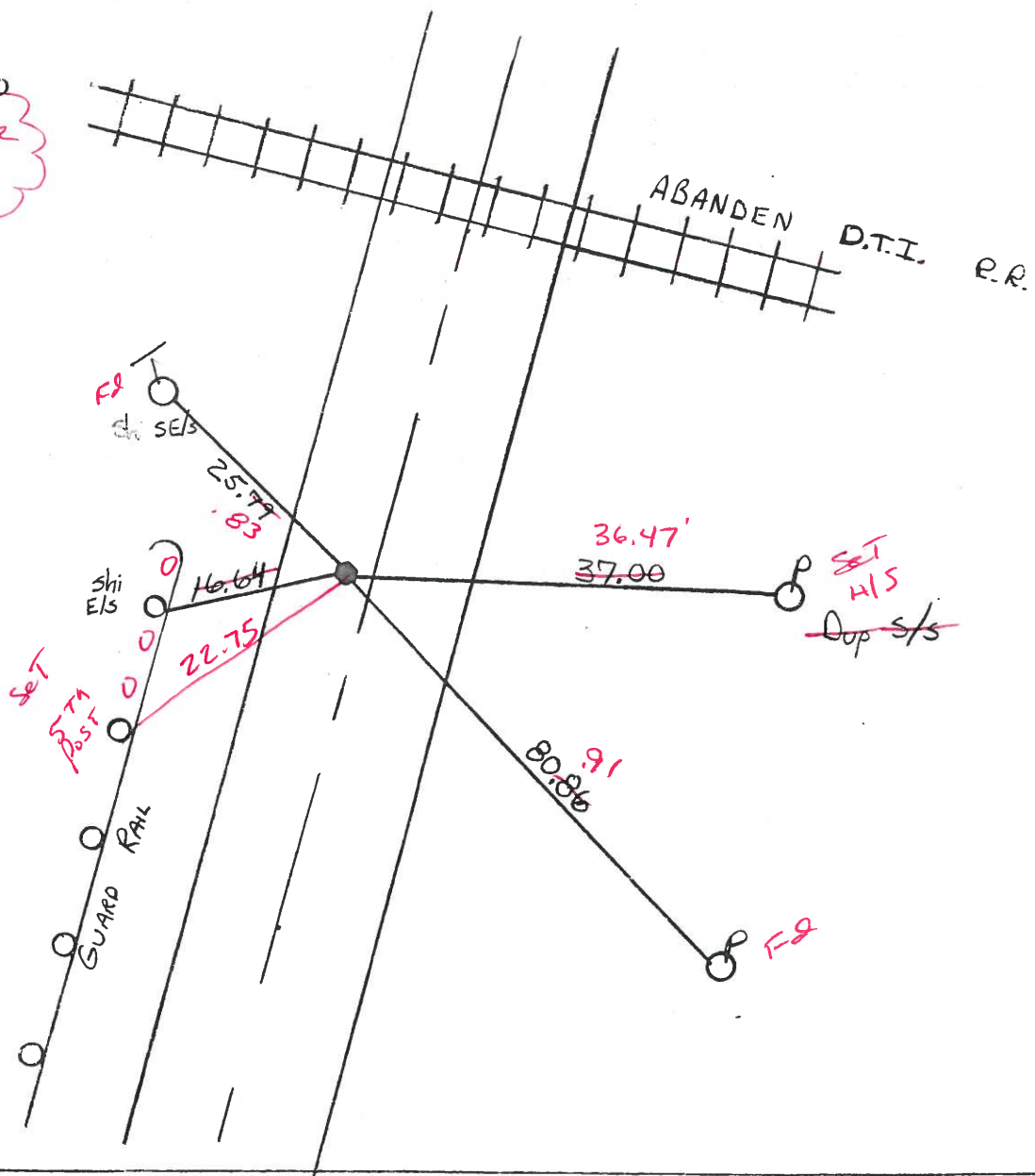
LEFT- & PAV'T. - RIGHT 2.5 2.9'

✓ B.G. TO Lt. EDGE PAVEMENT

S.L.M. 60+01



P.O.T.
RECORD Sta
65+27.20
Set Mag WASHER
12-15-06
RGN



O.D.O.T. DISTRICT 2 SURVEY OFFICE

PERSONNEL _____

REFERENCE NO. 4

SHEET 8 OF 34

NOTES LOHRKE

H.C. CURTIS

R.C. ROMETO

DATE 5-27-92

WEATHER CLEAR

TEMP. +60

ROUTE S.R. 110

COUNTY HENRY

TOWNSHIP HARRISON

SECTION 18

T S N R 7 E

Set P.K.
WASHER
10-27-92

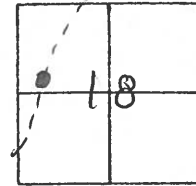
TYPE MONUMENT Sm. R.R. Spike

ON SURFACE - BELOW Yes

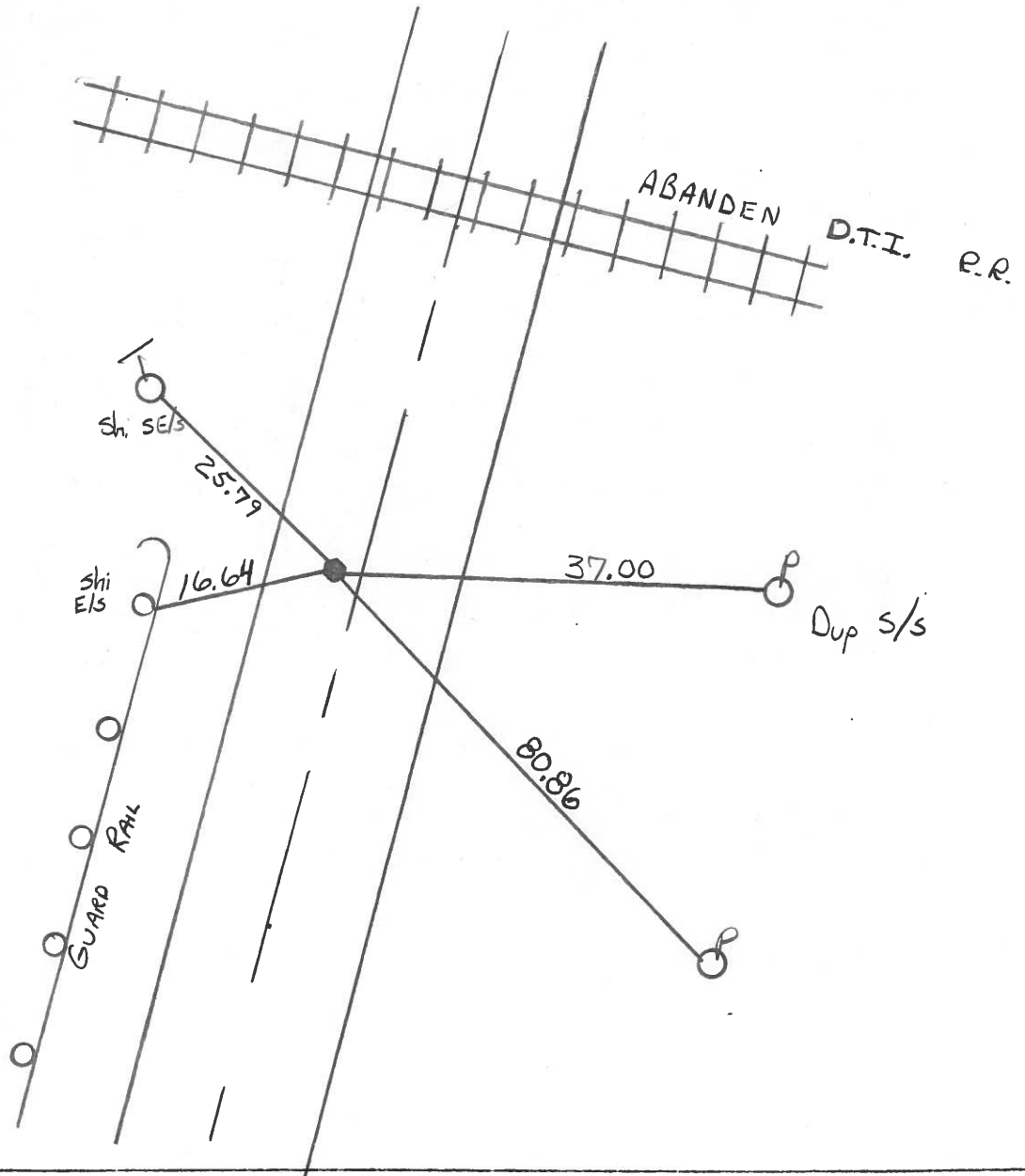
LEFT-~~C~~ PAV'T. - RIGHT 2.5

B.G. TO Lt. EDGE PAVEMENT

S.L.M. 60+01



P.O.T.
RECORD Sta
65+27.20



County HENRY S.R. 110

Date 1-6-84

Township HARRISON

Weather CLOUDY

Section 18

Temp. +34

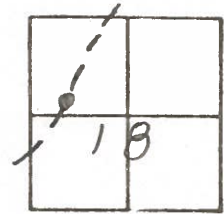
T5N, R7E

Personnel BARAN HISEL

HOUSE HOLDER

LOEHRKE

#4



Fd 5/8" Pipe 1" Below SURFACE

8.6' to WEP POT

14.0' to EEP

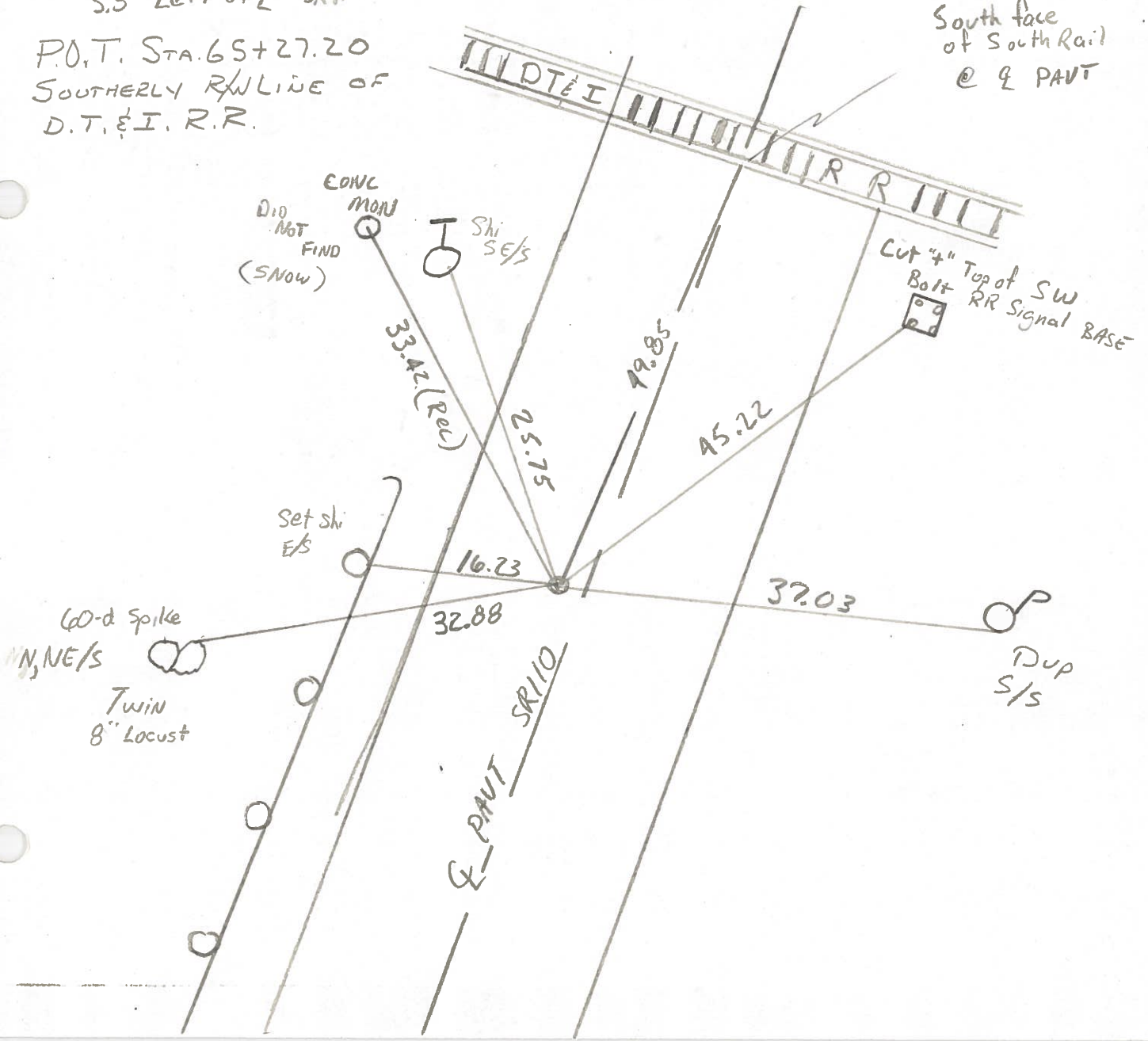
3.5' Left of E SR110

SET Small P.R. Spk.
6/13/84
m.D.B.

STM 60+12

P.O.T. STA. 65+27.20
SOUTHERLY R/W LINE OF
D.T. & I. R.R.

South face
of South Rail
@ E PAVT



PERSONNEL TITLE PERSONNEL TITLE
 Red Beach
 Newcomb
 Knappe

COUNTY HENRY DATE Oct. 1972

S. R. 110 WEATHER

SEC. Napoleon TEMP.

CONTROL POINTS

DESCRIPTION LEFT CENTER LINE RIGHT JOB NO.

