

O.D.O.T. DISTRICT 2 SURVEY OFFICE (USE ONLY)

PERSONNEL

REFERENCE NO. 4 A

SHEET 9 OF 51

NOTES NIESE DATE 3/15/24  
H.C. NIESE WEATHER BREEZY  
R.C. ASTON TEMP. 54°

ROUTE SR 110  
COUNTY HENRY  
TOWNSHIP HARRISON  
SECTION 7  
T 5 N R 7 E

DWG BY RHOADES PID 94321

TYPE MONUMENT MONBOX W/ 1" IPIN

ON SURFACE - ~~BELOW~~ ON

OFFSET ☉ PAVEMENT ON LT : RT

- TO - EDGE PAVEMENT

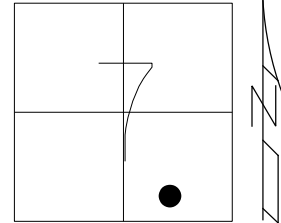
STATION: 101+94.89

HORZ. DATUM: NAD83 2011

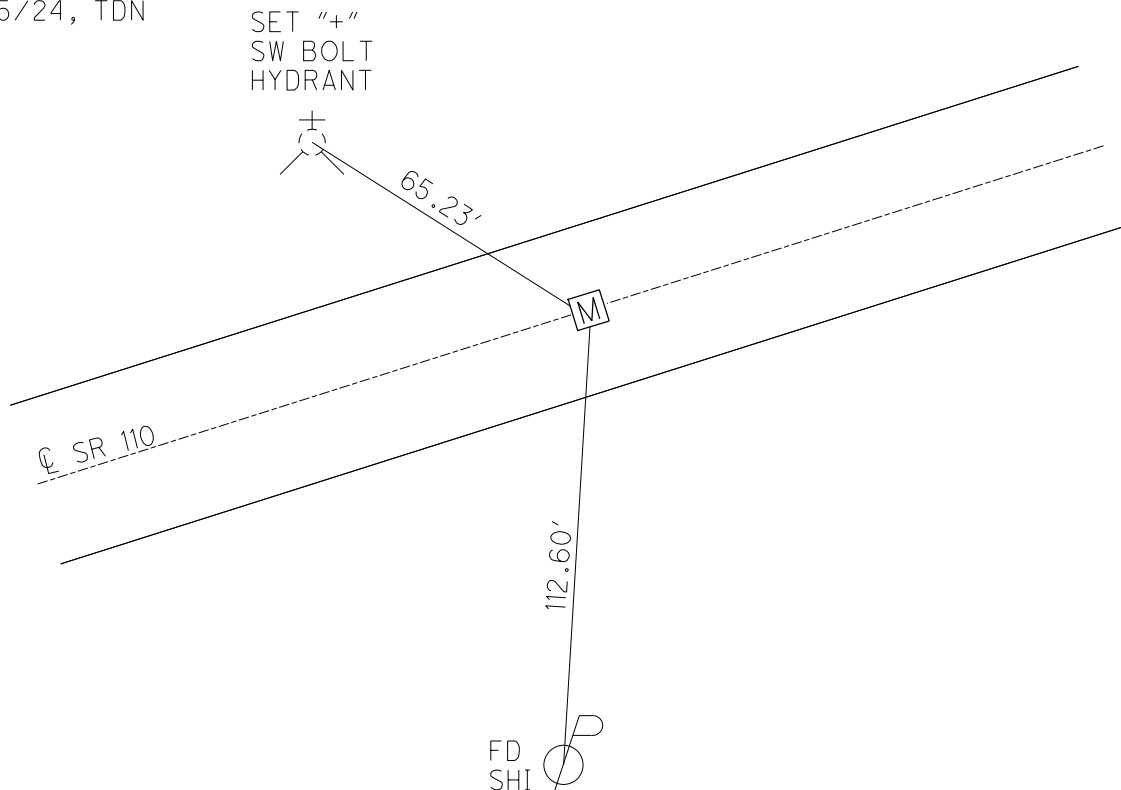
GEOID: NAVD88 2018

GRID: NORTHING: 636241.747

EASTING: 1529072.041



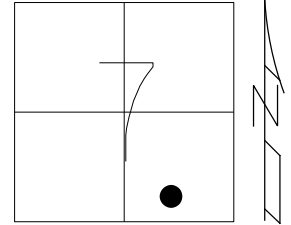
RECORD: NEW P.T.  
STA.101+94.89  
FD MONBOX  
W/1" IPIN  
4/27/23, DSA  
FD MONBOX  
1" IPIN  
REFAA4  
3/15/24, TDN



O.D.O.T. DISTRICT 2 SURVEY OFFICE (USE ONLY)

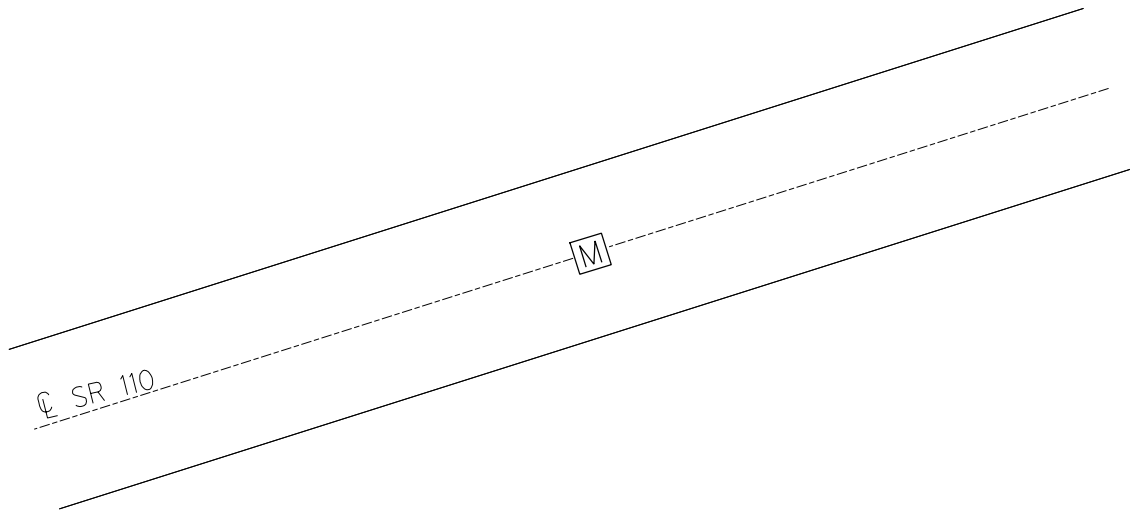
PERSONNEL \_\_\_\_\_ REFERENCE NO. 4 A SHEET 9 OF 51  
NOTES AUBLE DATE 4/27/23 ROUTE SR 110  
H.C. \_\_\_\_\_ WEATHER FAIR COUNTY HENRY  
R.C. \_\_\_\_\_ TEMP. 29° TOWNSHIP HARRISON  
DWG BY RHOADES PID 22984 SECTION 7  
T 5 N R 7 E

TYPE MONUMENT MONBOX W/ 1" IPIN  
ON SURFACE - ~~BELOW~~ ON  
OFFSET  $\odot$  PAVEMENT - LT : RT  
- TO - EDGE PAVEMENT  
STATION: 101+94.89



HORZ. DATUM: NAD83 2011 GEOID: NAVD88 2009  
GRID: NORTHING: 636284.699 EASTING: 1529175.259 NOTE: PAF= 1.0000675074

RECORD: NEW P.T.  
STA.101+94.89  
FD MONBOX  
W/1" IPIN  
4/27/23, DSA



O.D.O.T. DISTRICT 2 SURVEY OFFICE (USE ONLY)

PERSONNEL \_\_\_\_\_ REFERENCE NO. 4 A SHEET 9 OF 44

NOTES ASTON DATE 8/18/23 ROUTE SR 110  
 H.C. NIESE WEATHER CLEAR COUNTY HENRY  
 R.C. RHOADES TEMP. 75° TOWNSHIP HARRISON  
AUBLE SECTION 7

DWG BY RHOADES PID 94321 T 5 N R 7 E

TYPE MONUMENT MONBOX W/1" IPIN

ON SURFACE - ~~BELOW~~ ON

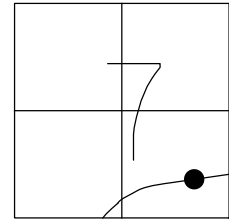
OFFSET CL PAVEMENT ON LT : RT

12.1' TO LT EDGE PAVEMENT

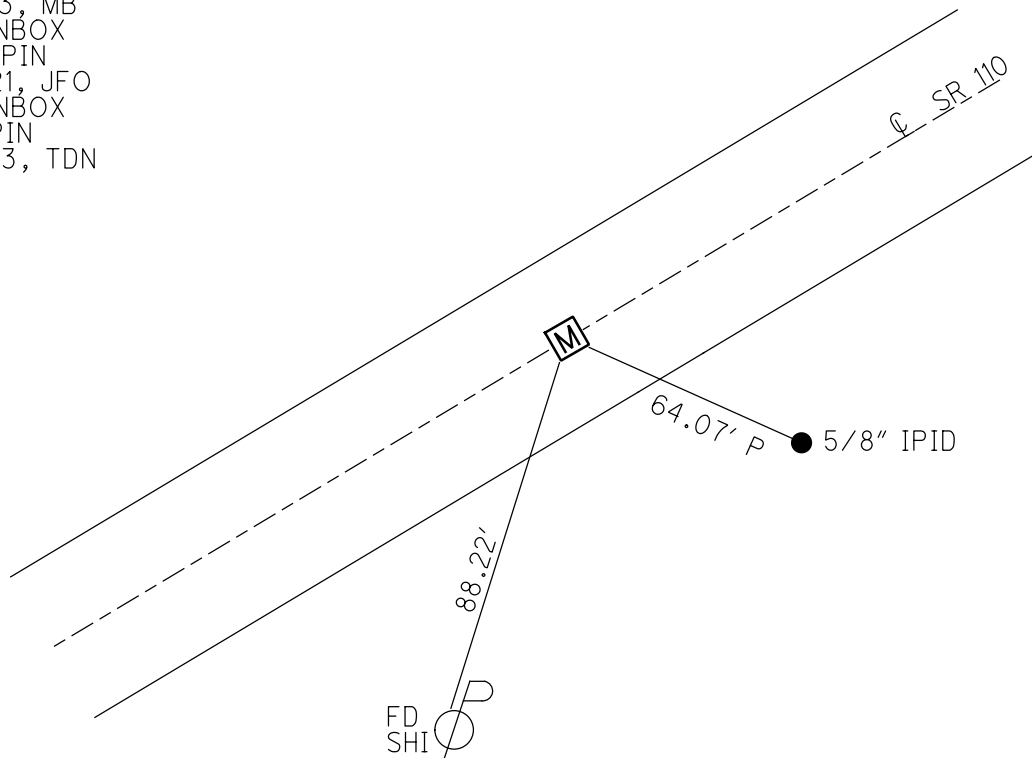
S.L.M. 101+29.61

HORZ.DATUM: NAD83 (2011) GEOID: NAVD88 2018

GRID: NORTHING: 636344.100 EASTING: 1529505.231



RECORD: P.O.T.  
 STA. 106+37.90  
 FD P.K. WASHER  
 4-22-03, MB  
 SET MAG/WASHER  
 6-19-03, MB  
 FD MONBOX  
 W/ 1" IPIN  
 5-05-21, JFO  
 FD MONBOX  
 W/1" IPIN  
 8/18/23, TDN



O.D.O.T. DISTRICT 2 SURVEY OFFICE

PERSONNEL

REFERENCE NO. 4-A

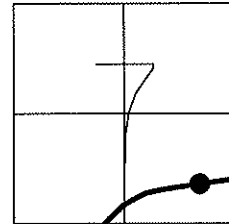
SHEET 1 OF 26

NOTES BARNHISEL  
 H.C. BARNHISEL  
 R.C. GLASS  
BRUMBAUGH

DATE 4-22-03  
 WEATHER CLOUDY  
 TEMP. +40°

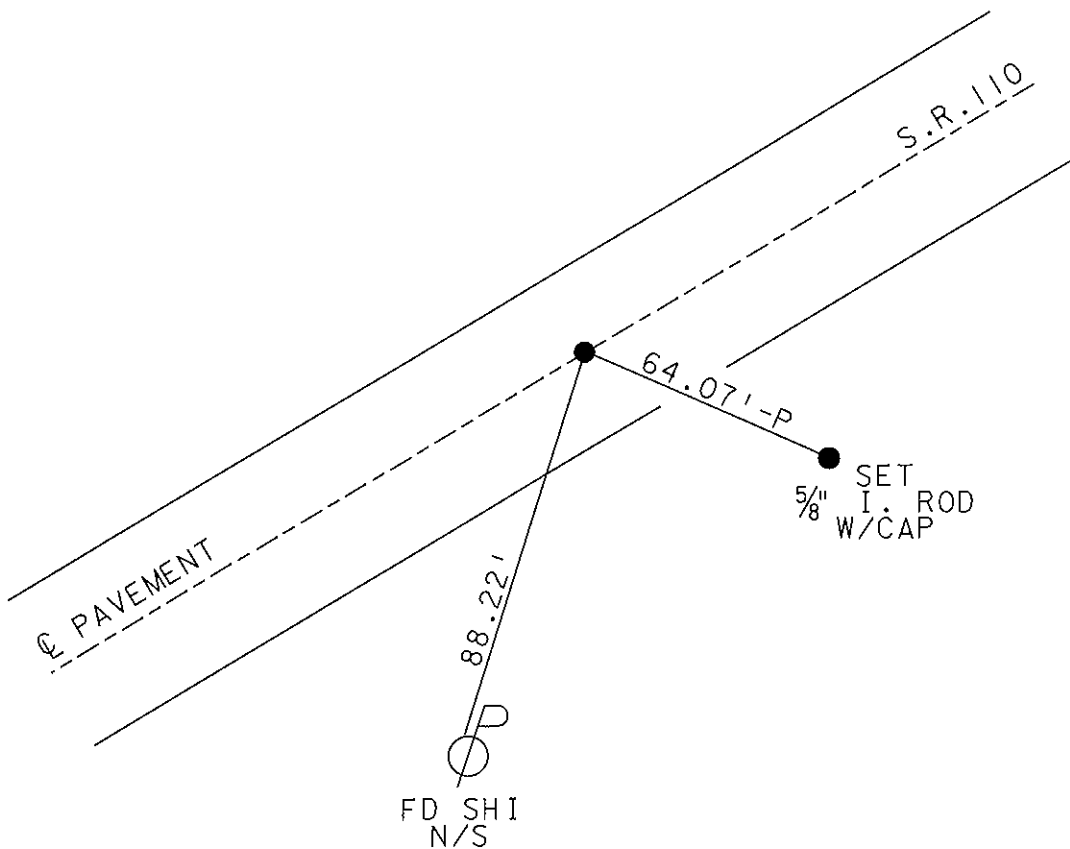
ROUTE S.R. 110  
 COUNTY HENRY  
 TOWNSHIP HARRISON  
 SECTION 7  
T 5 N R 7 E

TYPE MONUMENT P.K. WASHER  
 ON SURFACE - ~~BELOW~~ YES  
~~LEFT-C~~ PAV'T-RIGHT YES  
12.1 TO LT. EDGE PAVEMENT  
 S.L.M. 101+13



RECORD P.O.T.  
 STA. 106+37.90

RESET MAG NAIL & WASHER  
 6-19-03  
 MB



Resurfaced 2003

O.D.O.T. DISTRICT 2 SURVEY OFFICE

PERSONNEL

REFERENCE NO. 4A

SHEET 9 OF 34

NOTES LOEHRKE

H.C. CURTIS

R.C. ROMETO

DATE 5-27-92

WEATHER CLEAR

TEMP. +60

ROUTE S.R. 110

COUNTY HENRY

TOWNSHIP HARRISON

SECTION 7

T S N R 7 E

TYPE MONUMENT Sm. R.R. Spike

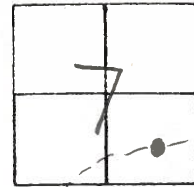
ON SURFACE - BELOW Yes

~~LEFT - C~~ PAV'T. - ~~RIGHT~~ Yes

12.0 TO L EDGE PAVEMENT

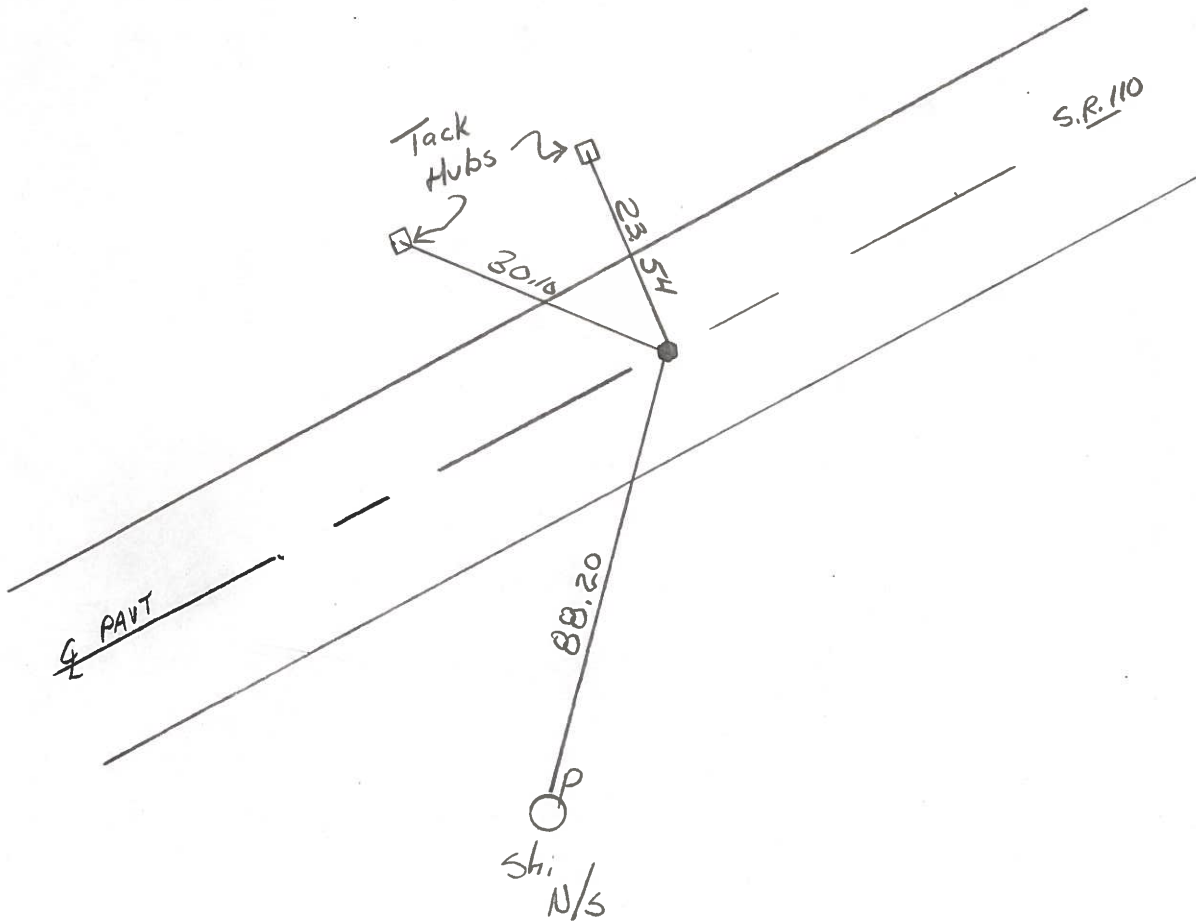
S.L.M. 101+13

Set P.K.  
WASHER  
10-27-92



REG. P.O.T.

Sta 106+39.90



ODOT. DISTRICT 2 SURVEY OFFICE

SHEET \_\_\_\_\_ OF \_\_\_\_\_

County HENRY S.R. 110

Date 1-6-84

Township HARRISON

Weather CLOUDY

Section 7

Temp. +33

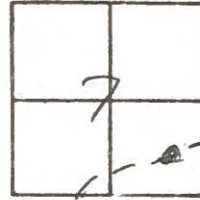
T5N, R2E

Personnel BARNHISEL

HOUSE HOLDER

LOEHRKE

4A

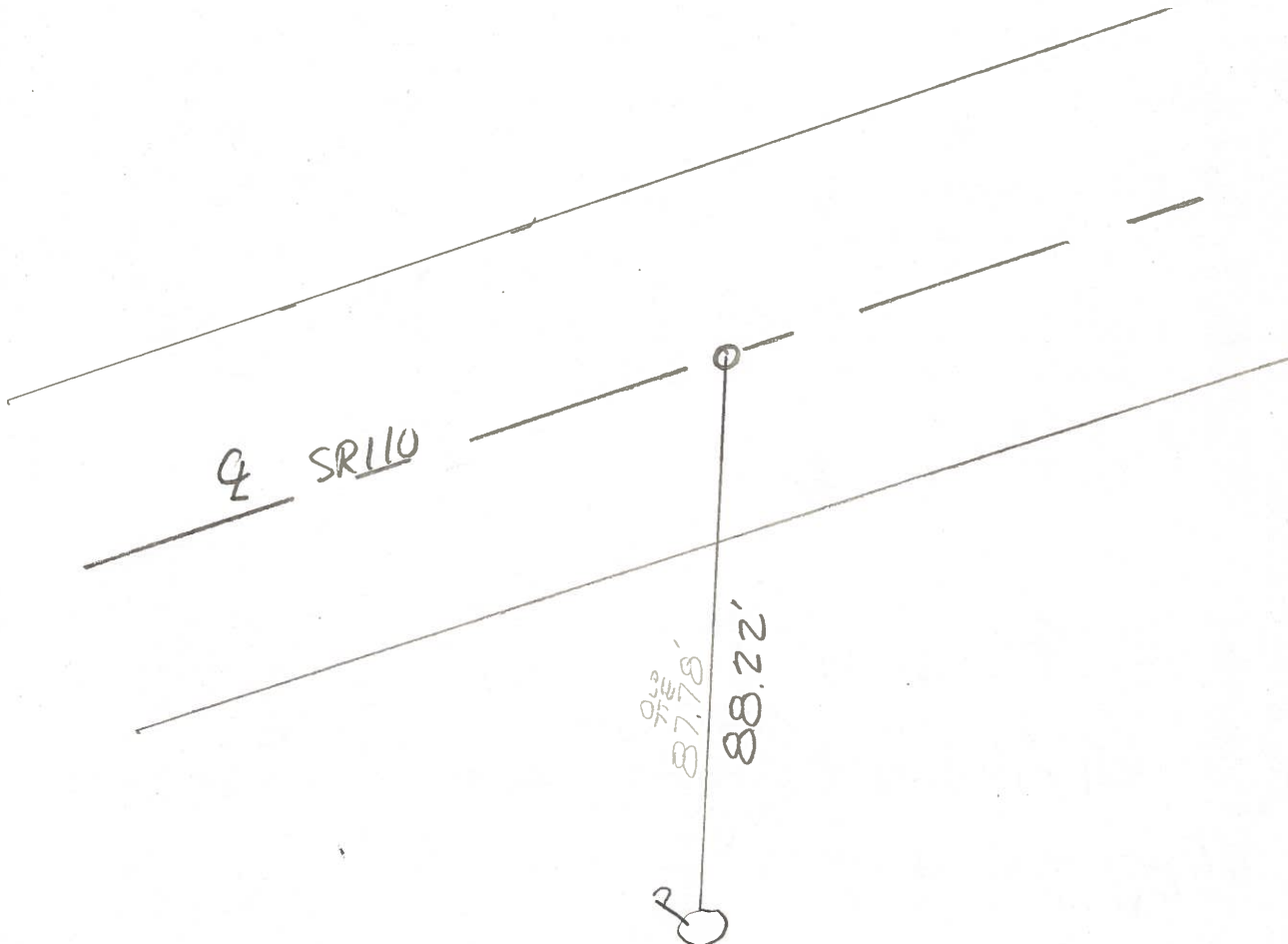


Fd  $\frac{5}{8}$ " Pipe 1" Below SURFACE  
 to WEP  
 to EEP  
 ON 4 PAVT SR110

SET SMALL R.R. SPK.  
 5/18/84  
 S.W.H.

SLM ± 101+30

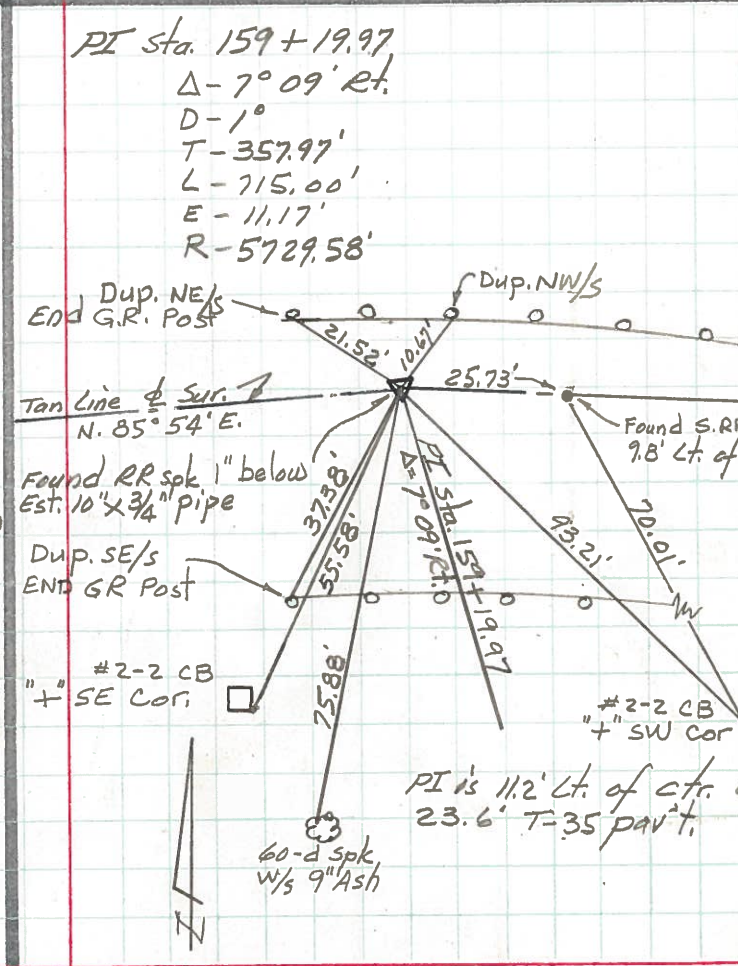
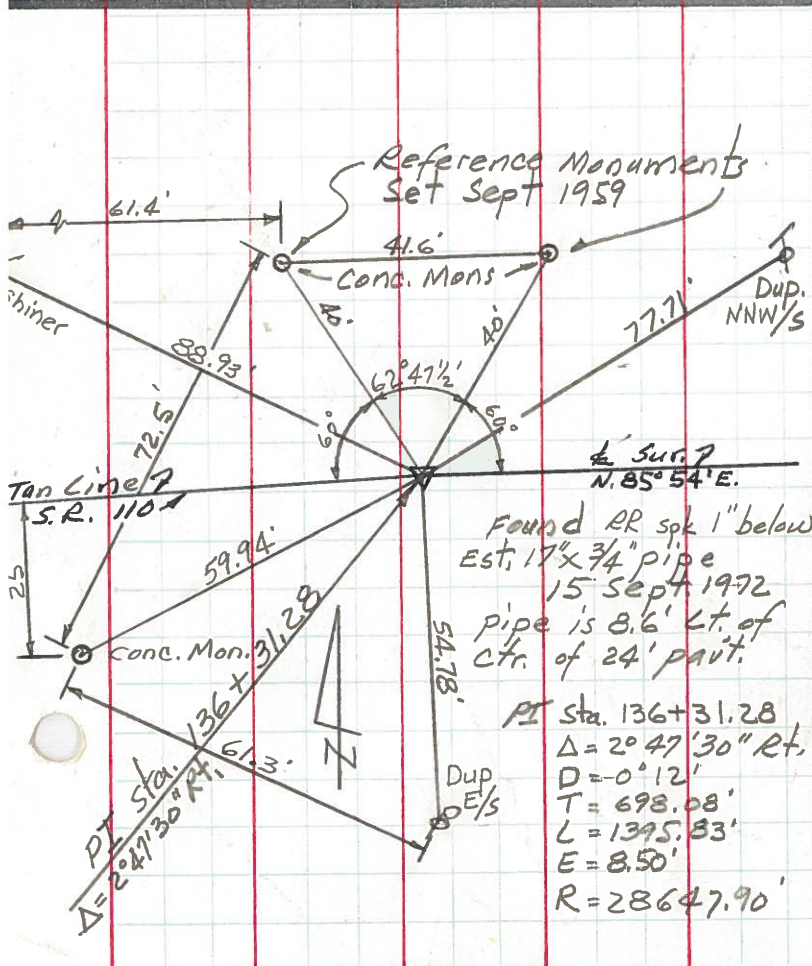
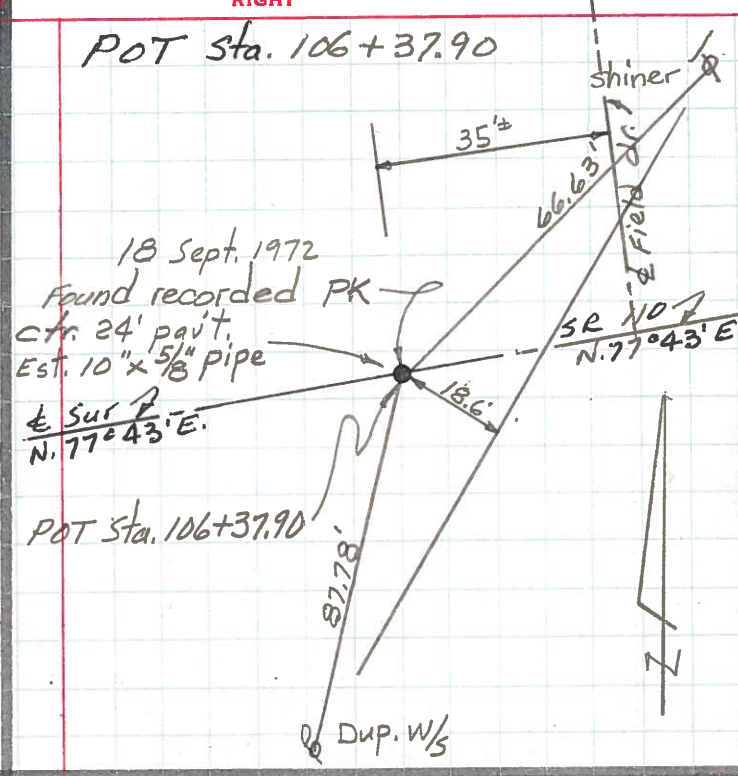
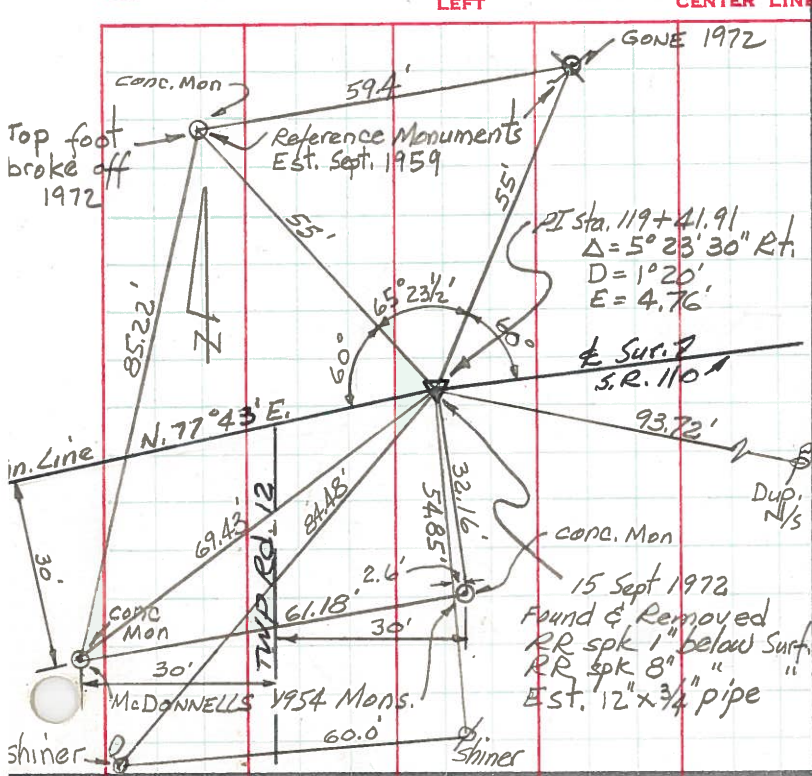
P.O.T. STA. 106+37.90



PERSONNEL TITLE PERSONNEL TITLE  
 Red Beach  
 Newcomb  
 Knappe

COUNTY He. DATE Sept. 1972  
 S. R. 110 WEATHER  
 SEC. 8-Harrison Twp. TEMP.

DESCRIPTION CONTROL POINTS JOB NO.



PERSONNEL	TITLE	PERSONNEL	TITLE	COUNTY	DATE
Beach		Hoff		Henry	Dec. 1957
Armbuster		Harris		S. R. 110	WEATHER
Ruffner		Ruchener		SEC. 2.22	TEMP.
Koepfe		Delvanthal			

DESCRIPTION \_\_\_\_\_ CONTROL POINTS 1 JOB NO. \_\_\_\_\_

