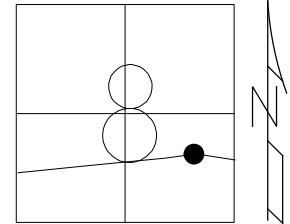


O.D.O.T. DISTRICT 2 SURVEY OFFICE (USE ONLY)

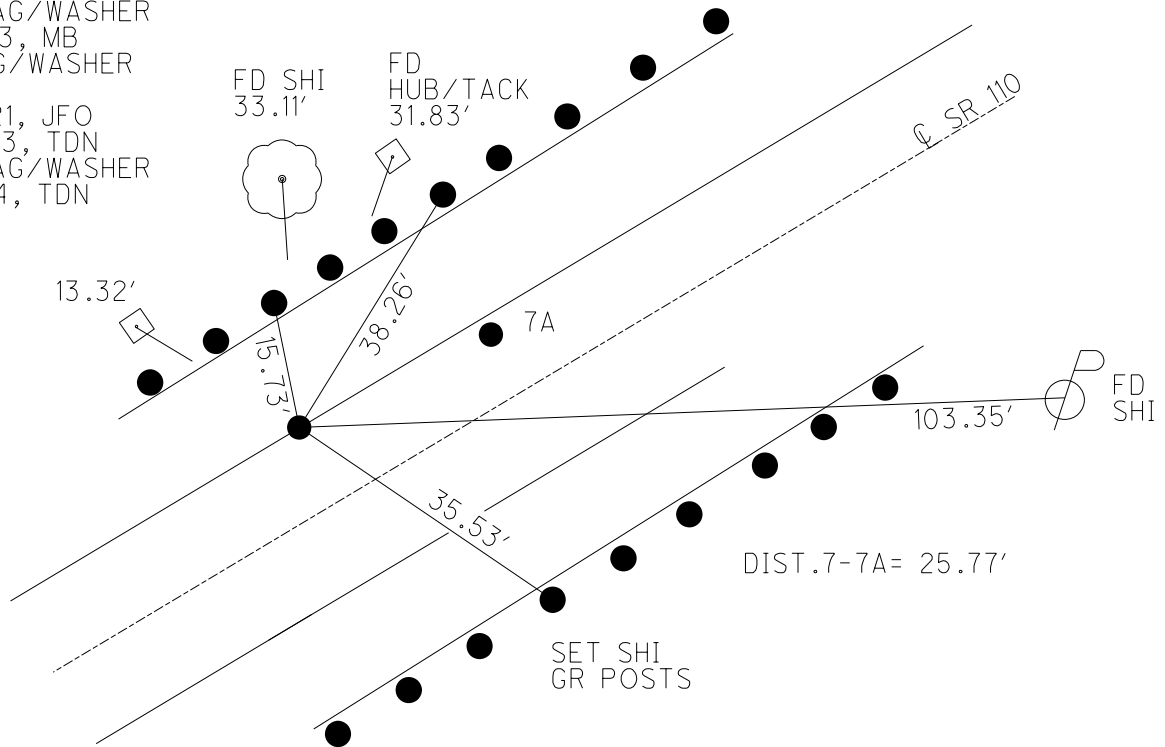
PERSONNEL _____ REFERENCE NO. 7 SHEET 21 OF 51
 NOTES MILLER DATE 3/13/24 ROUTE SR 110
 H.C. NIESE WEATHER CLEAR COUNTY HENRY
 R.C. RHOADES TEMP. 55° TOWNSHIP HARRISON
 SECTION 8
 DWG BY RHOADES PID 94321 T 5 N R 7 E

TYPE MONUMENT MAG/WASHER
 ON SURFACE - ~~BELOW~~ ON _____
 OFFSET \odot PAVEMENT 11.4' LT : ~~RT~~
1.8' TO LT EDGE PAVEMENT
 S.L.M. 154+07.97



HORIZ.DATUM: NAD83 (2011) GEOID: NAVD88 2018
 GRID: NORTHING: 637079.455 EASTING: 1534724.638

RECORD: P.I.
 STA. 159+19.97
 $\Delta = 7^{\circ}09' RT$
 $L = 715.00'$
 $D = 1^{\circ}$
 $E = 11.17'$
 $T = 357.97'$
 $R = 5729.58'$
 FD SM.R.R.SPIKE
 4-24-03, MB
 SET MAG/WASHER
 6-19-03, MB
 FD MAG/WASHER
 REF7
 5-05-21, JFO
 8/18/23, TDN
 SET MAG/WASHER
 3/4/24, TDN

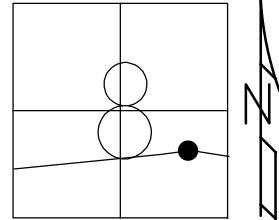


O.D.O.T. DISTRICT 2 SURVEY OFFICE (USE ONLY)

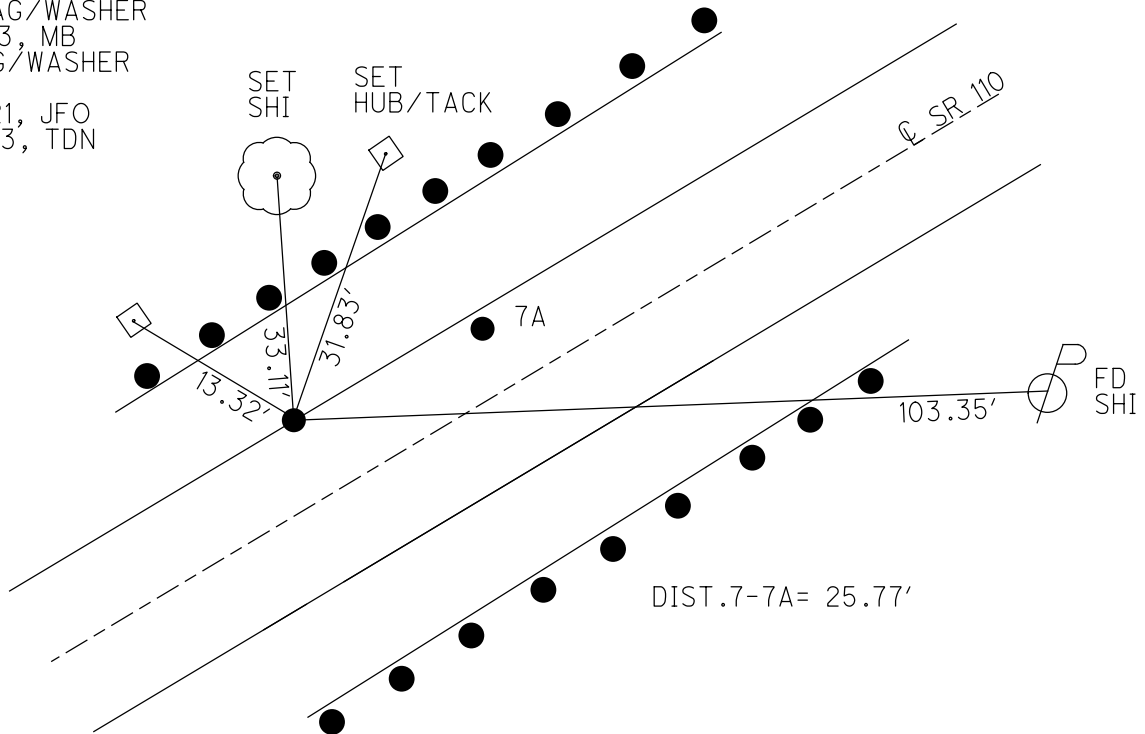
PERSONNEL _____ REFERENCE NO. 7 SHEET 14 OF 44
 NOTES ASTON DATE 8/18/23 ROUTE SR 110
 H.C. NIESE WEATHER CLEAR COUNTY HENRY
 R.C. RHOADES TEMP. 75° TOWNSHIP HARRISON
AUBLE SECTION 8
 DWG BY RHOADES PID 94321 T 5 N R 7 E

TYPE MONUMENT MAG/WASHER
 ON SURFACE - ~~BELOW~~ ON _____
 OFFSET ☐ PAVEMENT 11.5' LT : ~~RT~~
ON TO LT EDGE PAVEMENT
 S.L.M. 154+07.97

HORZ.DATUM: NAD83 (2011) GEOID: NAVD88 2018
 GRID: NORTHING: 637079.455 EASTING: 1534724.638



RECORD: P.I.
 STA. 159+19.97
 $\Delta = 7^{\circ}09' RT$
 $L = 715.00'$
 $D = 1^{\circ}$
 $E = 11.17'$
 $T = 357.97'$
 $R = 5729.58'$
 FD SM.R.R.SPIKE
 4-24-03, MB
 SET MAG/WASHER
 6-19-03, MB
 FD MAG/WASHER
 REF7
 5-05-21, JFO
 8/18/23, TDN



O.D.O.T. DISTRICT 2 SURVEY OFFICE

PERSONNEL

REFERENCE NO. 7

SHEET 4 OF 26

NOTES BARNHISEL
 H.C. CANTERBURY
 R.C. BARNHISEL
BRUMBAUGH

DATE 4-24-03
 WEATHER CLEAR
 TEMP. +60°

ROUTE S.R. 110
 COUNTY HENRY
 TOWNSHIP HARRISON
 SECTION 8
T 5 N R 7 E

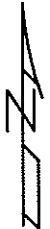
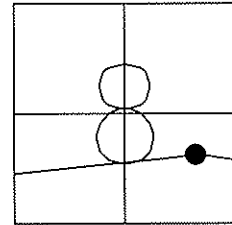
TYPE MONUMENT "A" SM. R.R. SPIKE ---- "B" P.K. NAIL & WASHER

ON SURFACE - ~~BELOW~~ YES

LEFT-Q PAV'T 11.5' PT "A" / "B" 10.0' LT

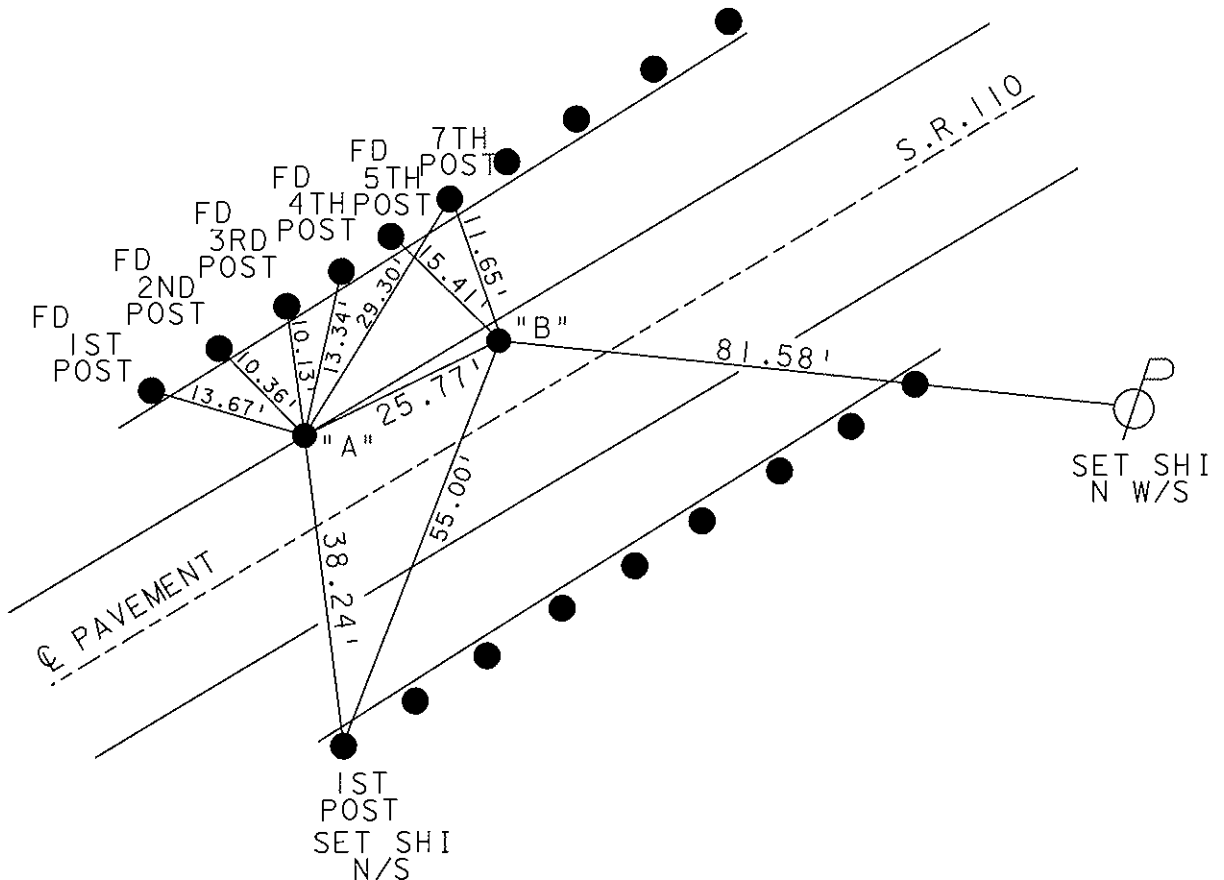
"A" ON LT. EDGE PAVEMENT

S.L.M. "A" 153+92 / "B" 154+18



RECORD P.I. (PT. "A")
 STA. 159+19.97
 DELTA = 7°-09' RT.
 D = 1°
 T = 357.97'
 POINT "B" = POT

RESET MAG NAILS & WASHERS
 6-19-03
 MB



O.D.O.T. DISTRICT 2 SURVEY OFFICE

PERSONNEL

REFERENCE NO. 7

SHEET 12 OF 34

NOTES LOEHRKE

H.C. CURTIS

R.C. ROMETO

DATE 5-27-92

WEATHER Pt Cloudy

TEMP. +60

ROUTE S.R. 110

COUNTY HENRY

TOWNSHIP HARRISON

SECTION 8

T5 N R 7 E

Reset SAME 10-27-92

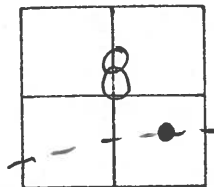
TYPE MONUMENT "A" 5m RR spike B: P.K. Nail

ON SURFACE - ~~BELOW~~ Yes

LEFT- & PAV'T. - ~~RIGHT~~ 11.5 pt. A

~~ON TO~~ LT. EDGE PAVEMENT

S.L.M. "A" 153+92 154+18



REC. P.I. (Pt. "A")

Pt "B" = P.D.T.

Sta 159+19.97

$\Delta = 7^{\circ}09' \text{ Rt.}$

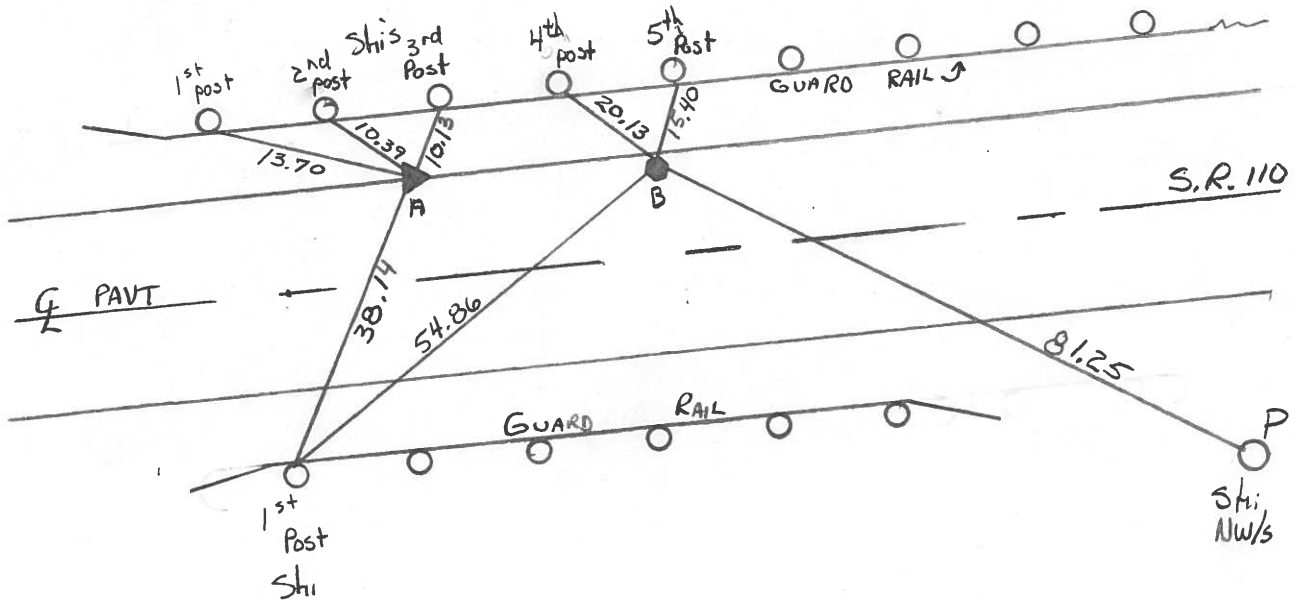
$D = 1^{\circ}$

$T = 357.97'$

$L = 715.00'$

$E = 11.17'$

$R = 5729.58'$



ODOT. DISTRICT 2 SURVEY OFFICE

SHEET _____ OF _____

County HENRY S.R. 110

Date 1-9-84

Township HARRISON

Weather CLOUDY, FLURRIES

Section 8

Temp. +28

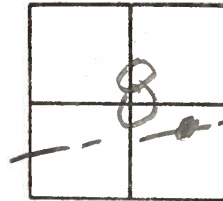
T5N, R2E

Personnel BARNHISEL

HOUSEHOLDER

LOEHARKE

7



Pt "A" PI SIM 154+04

3/4" PIPE 1" Below SURFACE

ON WEP

11.5 LPOF & SR110

Pt B POT

SLM 154+30

SMALL RR SPIKE 1" Bel

1.6 to WEP

9.9 LPOF & SR110

DISTANCE Between 25.73

P.I. STA 159+19.97

$\Delta = 7^{\circ}09' RT$

$D = 1^{\circ}$

$T = 357.97'$

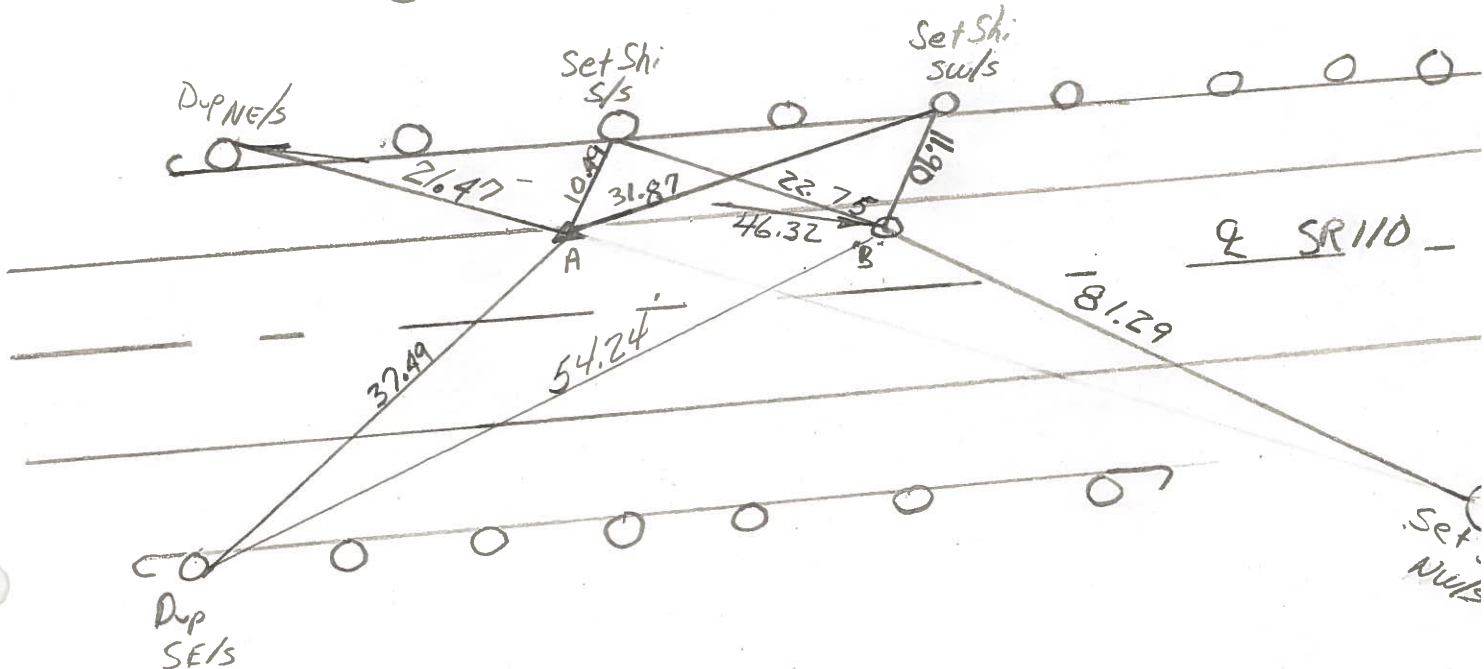
$L = 715.00'$

$E = 11.17'$

$R = 5729.58'$

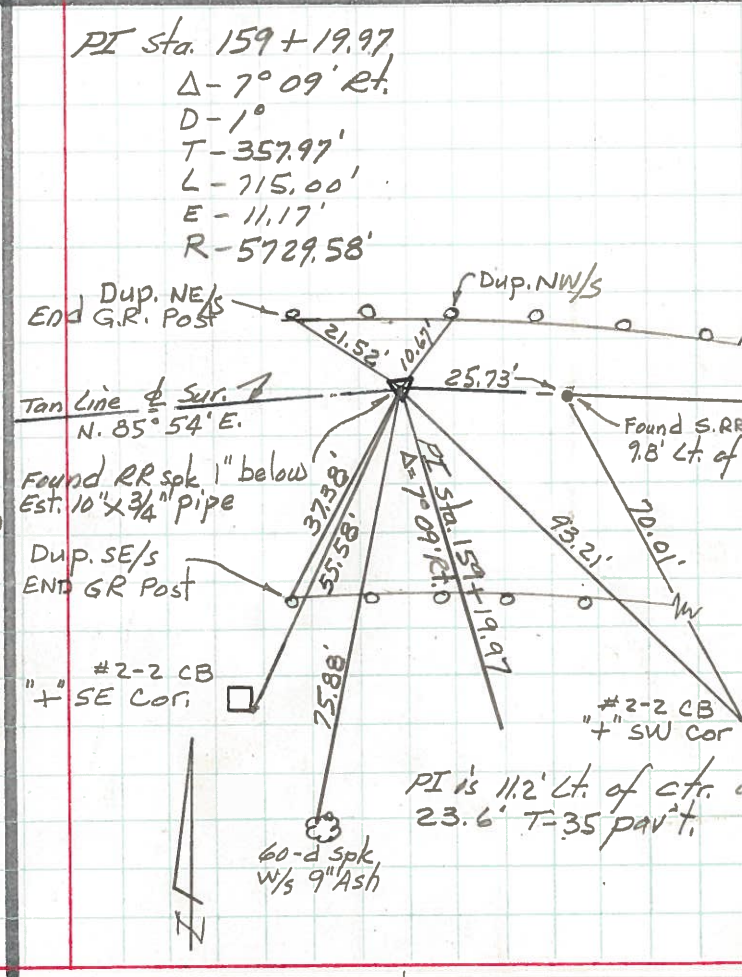
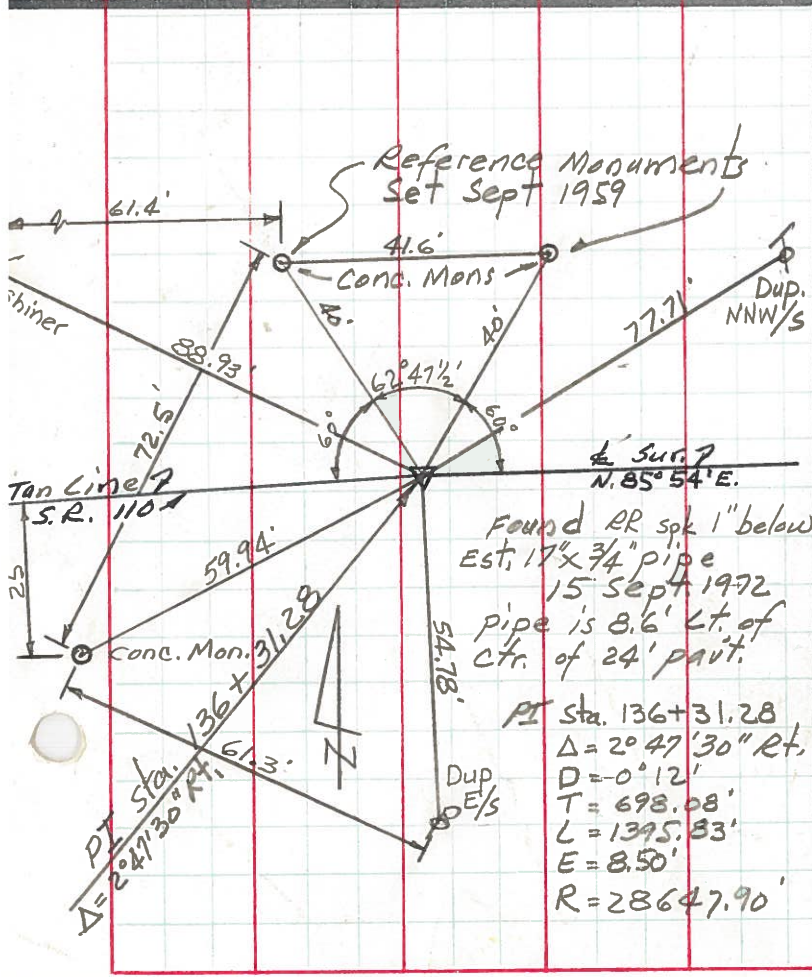
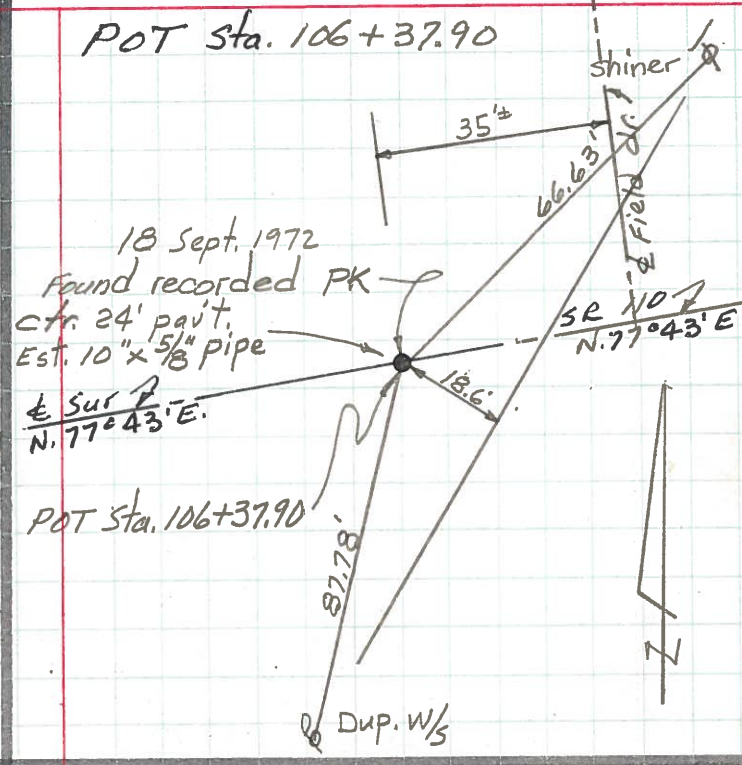
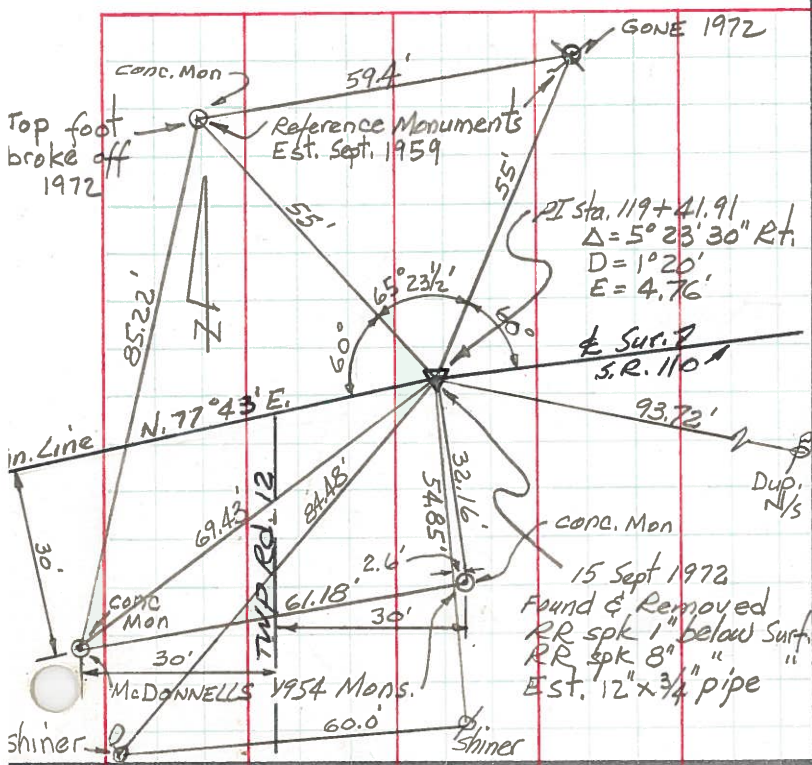
Pt. "A"
SET SMALL R.R. SPK.
6/13/84 M.D.B.

Pt. "B"
SET P.K./WASHER
6/13/84 M.D.B.



PERSONNEL Red Beach TITLE _____ PERSONNEL Newcomb TITLE _____
 COUNTY He. DATE Sept. 1972
 S. R. 110 WEATHER _____
 SEC. 8-Harrison Twp. TEMP. _____

DESCRIPTION _____ CONTROL POINTS _____ JOB NO. _____

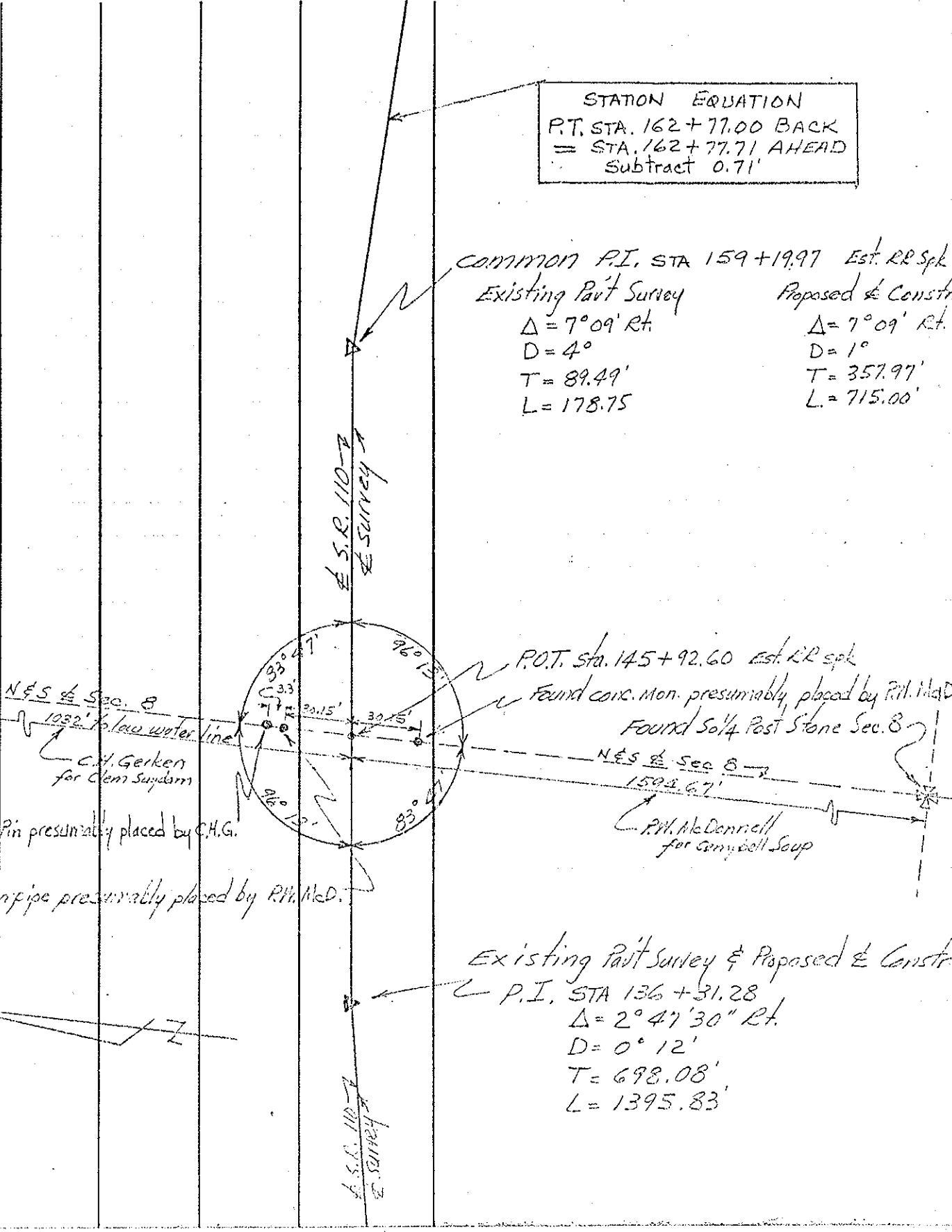


PERSONNEL	TITLE	PERSONNEL	TITLE	COUNTY	DATE
Beach				Henry	Dec. 1957
Armbruster				S. R. 110	WEATHER
Knape				SEC. 2.22	TEMP.
Harris					
Rychener					
DESCRIPTION	ALIGNMENT			Sheet #2	JOB NO.

LEFT CENTER LINE RIGHT

STATION EQUATION
 P.T. STA. 162+77.00 BACK
 = STA. 162+77.71 AHEAD
 Subtract 0.71'

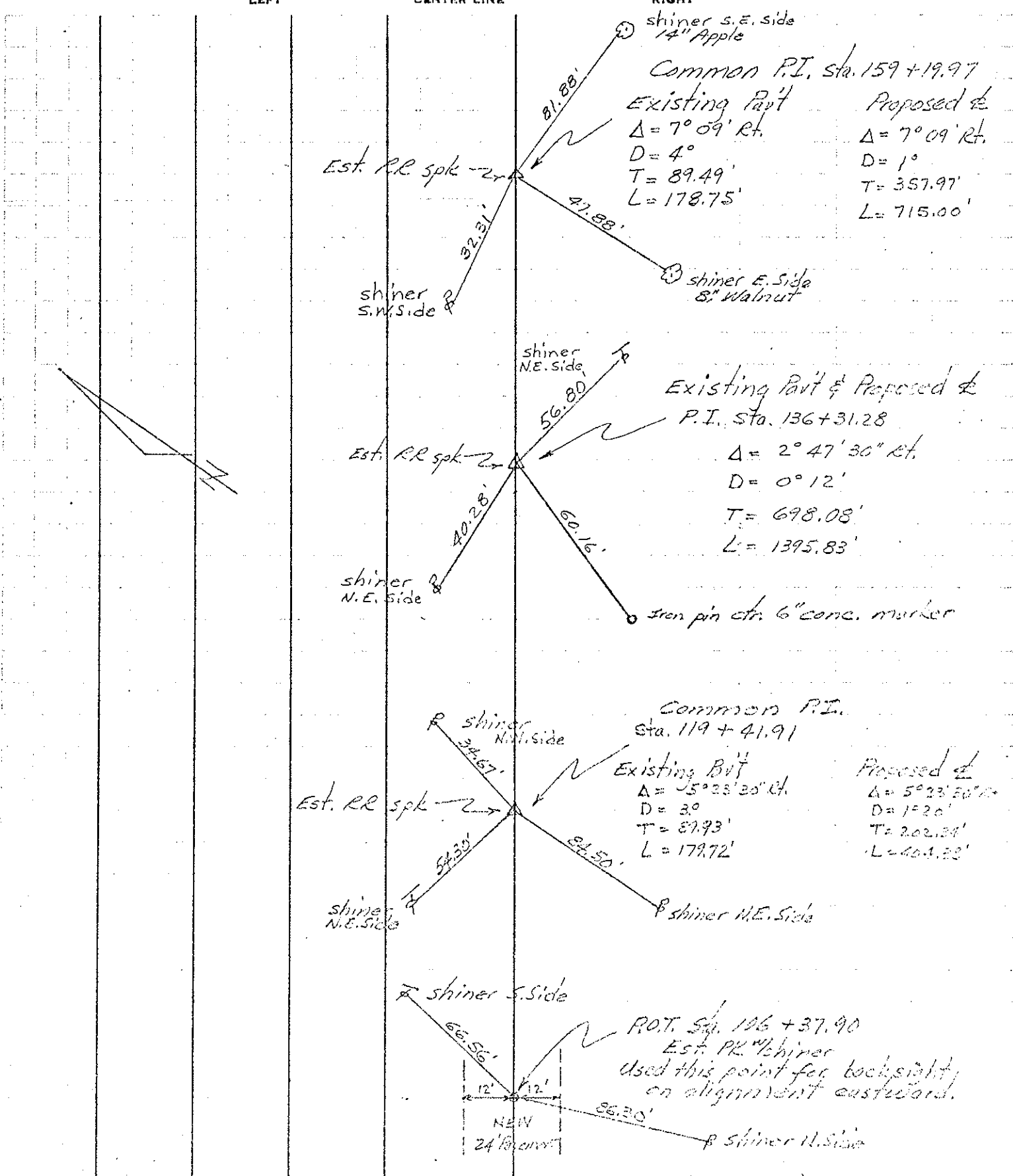
COMMON P.I. STA 159+19.97 Est. RR Spk
 Existing Pav't Survey Proposed & Constr
 $\Delta = 7^{\circ}09' \text{ Rt.}$ $\Delta = 7^{\circ}09' \text{ Rt.}$
 $D = 4^{\circ}$ $D = 1^{\circ}$
 $T = 89.49'$ $T = 357.97'$
 $L = 178.75$ $L = 715.00'$



Existing Pav't Survey & Proposed & Constr
 P.I. STA 136+31.28
 $\Delta = 2^{\circ}47'30'' \text{ Rt.}$
 $D = 0^{\circ}12'$
 $T = 698.08'$
 $L = 1395.83'$

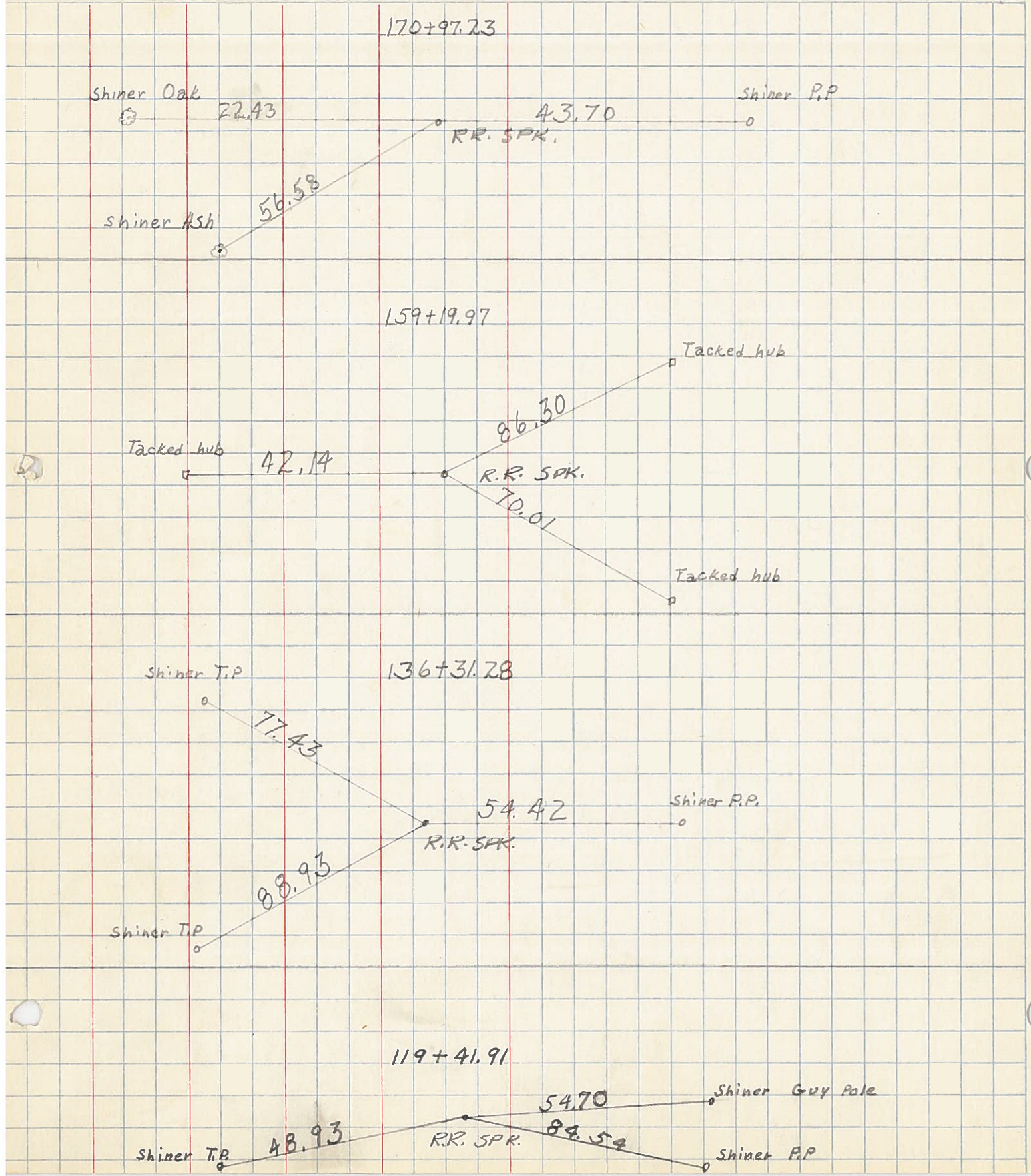
PERSONNEL	TITLE	PERSONNEL	TITLE	COUNTY	DATE
Beach		Hoff		Henry	Dec. 1957
Ambrose		Harris		S. R. 110	WEATHER
Ruffner		Ruchener		SEC. 2.22	TEMP.
Koeppe		Delvanthal			

DESCRIPTION _____ CONTROL POINTS 1 JOB NO. _____



PERSONNEL	TITLE	PERSONNEL	TITLE	COUNTY	DATE
Ernsthausen				Henry	11-20-58
Donaldson				S. R. 110	WEATHER Clear
Text				SEC.	TEMP. 50°

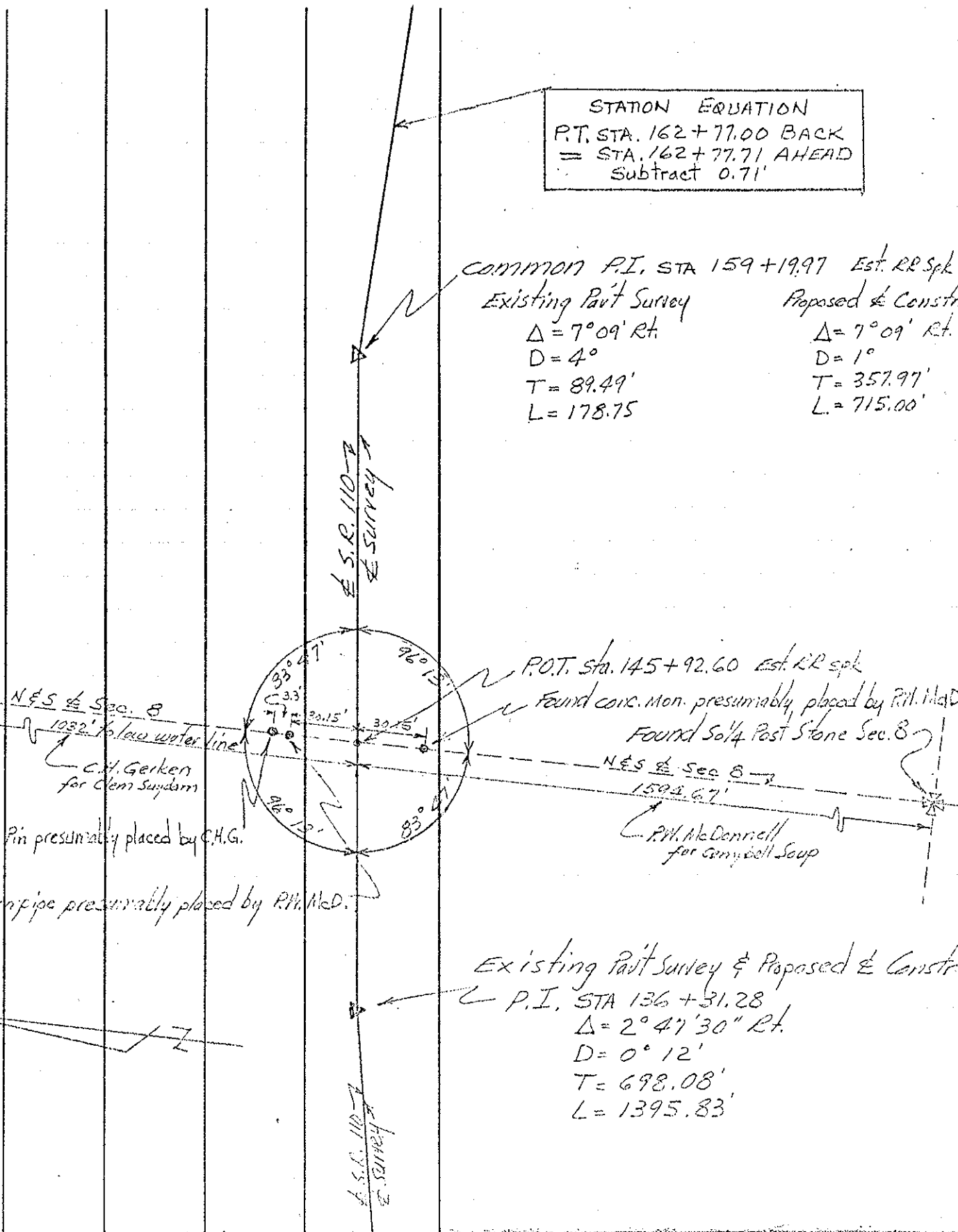
DESCRIPTION: Ties To P.I.'s 119+41.91 TO 170+97.23
LEFT CENTER LINE RIGHT JOB NO.



PERSONNEL	TITLE	PERSONNEL	TITLE	COUNTY	DATE
Beach				Henry	Dec. 1957
Armbruster				S. R. 110	WEATHER
Knape				SEC. 2.22	TEMP.
Harris					
Rychener					
ALIGNMENT				Sheet #2	JOB NO.
DESCRIPTION	LEFT	CENTER LINE	RIGHT		

STATION EQUATION
 P.T. STA. 162+77.00 BACK
 = STA. 162+77.71 AHEAD
 Subtract 0.71'

COMMON P.I. STA 159+19.97 Est. RR Spk
 Existing Pav't Survey Proposed & Constr
 $\Delta = 7^{\circ}09' \text{ Rt.}$ $\Delta = 7^{\circ}09' \text{ Rt.}$
 $D = 4^{\circ}$ $D = 1^{\circ}$
 $T = 89.49'$ $T = 357.97'$
 $L = 178.75$ $L = 715.00'$



Found Iron Pin presumably placed by C.H.G.
 Found Iron pipe presumably placed by P.M. McD.

P.O.T. Sta. 145+92.60 Est. RR Spk
 Found conc. Mon. presumably placed by P.M. McD.
 Found 3/4 Post Stone Sec. 8
 N&S of Sec. 8
 1592.67'
 P.M. McDermott for Campbell Soup

Existing Pav't Survey & Proposed & Constr
 P.I. STA 136+31.28
 $\Delta = 2^{\circ}47'30'' \text{ Rt.}$
 $D = 0^{\circ}12'$
 $T = 698.08'$
 $L = 1395.83'$