

O.D.O.T. DISTRICT 2 SURVEY OFFICE (USE ONLY)

PERSONNEL _____ REFERENCE NO. 8 SHEET 23 OF 51

NOTES MILLER DATE 3/13/24 ROUTE SR 110
 H.C. NIESE WEATHER CLEAR COUNTY HENRY
 R.C. RHOADES TEMP. 55° TOWNSHIP HARRISON
 SECTION 8

DWG BY RHOADES PID 94321 T 5 N 7 E

TYPE MONUMENT MAG/WASHER

ON SURFACE - ~~BELOW~~ ON _____

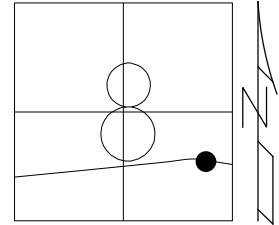
OFFSET \odot PAVEMENT 11.8' LT : ~~RT~~

0.8' TO LT EDGE PAVEMENT

S.L.M. 165+84.17

HORIZ.DATUM: NAD83 (2011) GEOID: NAVD88 2018

GRID: NORTHING: 637037.564 EASTING: 1535901.116



RECORD: P.I.CONST.

STA. 170+97.23

$\Delta = 10^{\circ}00'$ RT

D = 3°

FD SM.R.R.SPIKE

4-24-03

SET MAG/WASHER

6-19-03, MB

FD MAG/WASHER

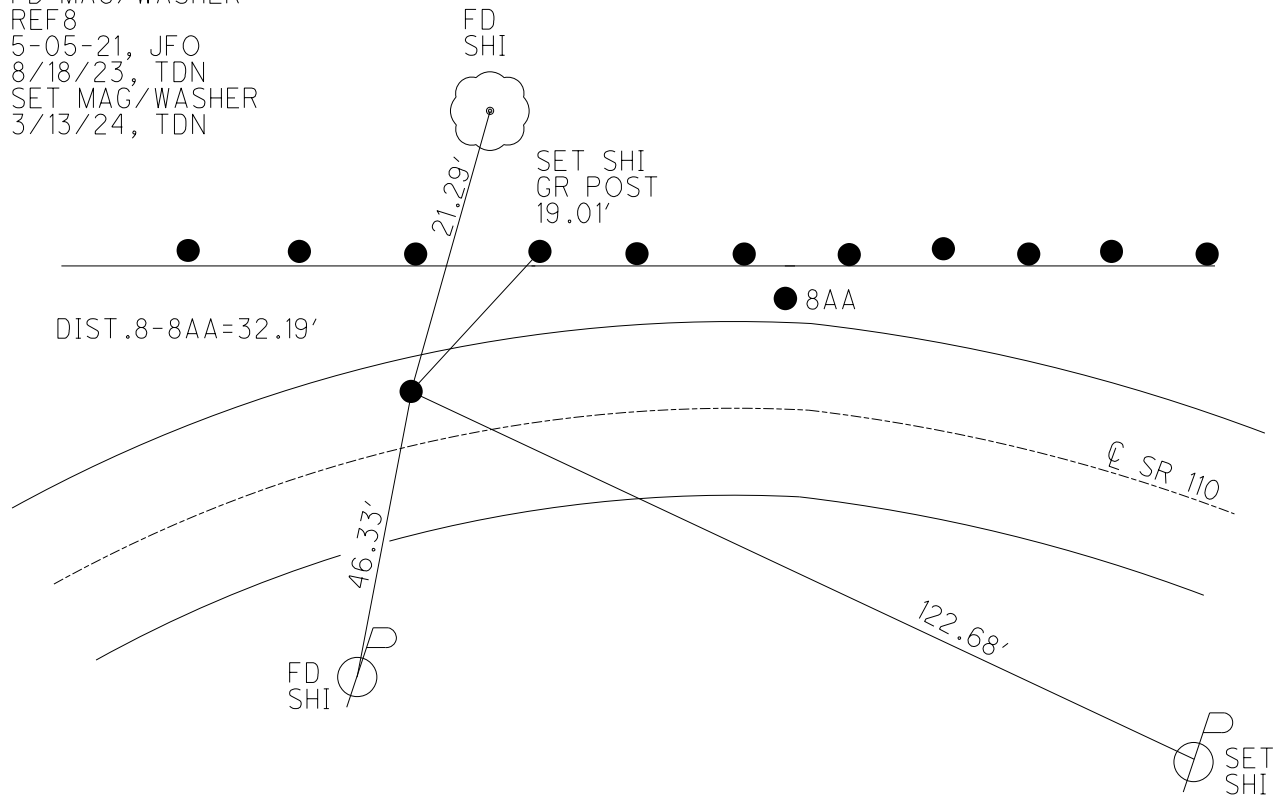
REF8

5-05-21, JFO

8/18/23, TDN

SET MAG/WASHER

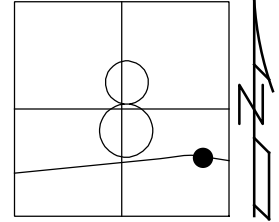
3/13/24, TDN



O.D.O.T. DISTRICT 2 SURVEY OFFICE (USE ONLY)

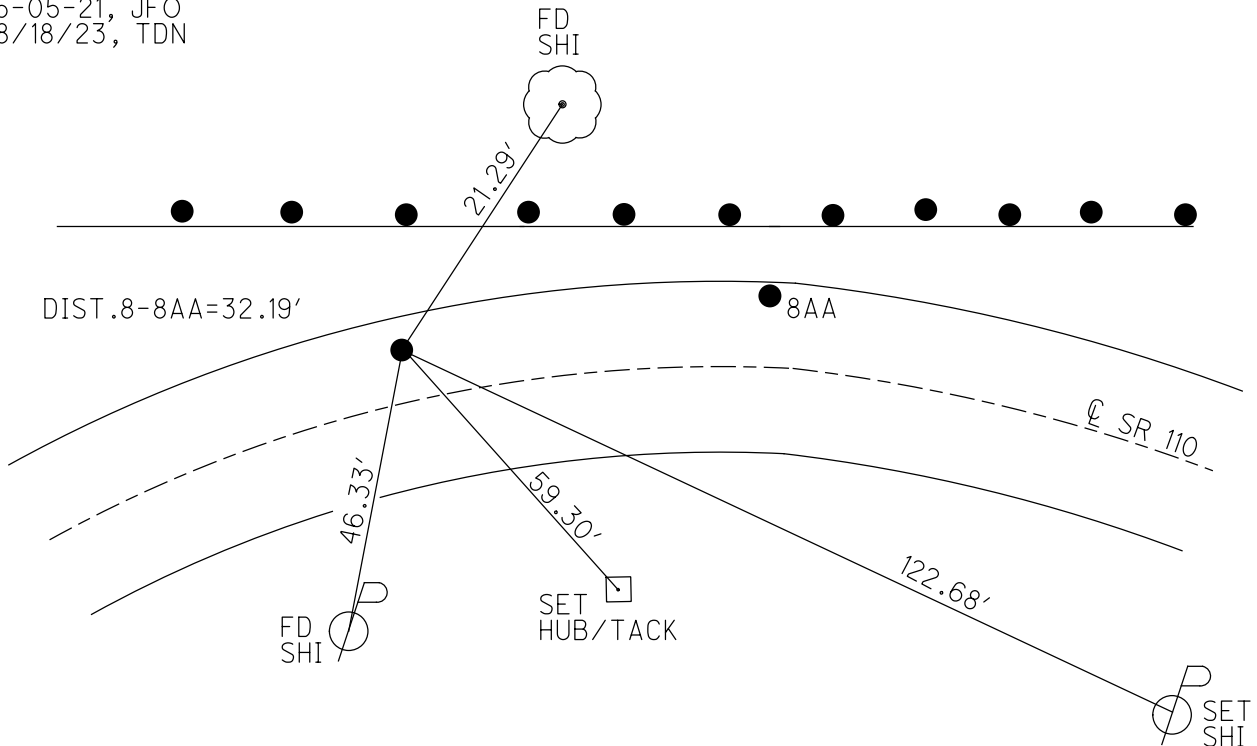
PERSONNEL	REFERENCE NO.	8	SHEET	16	OF	44
NOTES	ASTON	DATE	8/18/23	ROUTE	SR 110	
H.C.	NIESE	WEATHER	CLEAR	COUNTY	HENRY	
R.C.	RHOADES	TEMP.	72°	TOWNSHIP	HARRISON	
	AUBLE			SECTION	8	
DWG BY	RHOADES	PID	94321	T	5	N
				R	7	E

TYPE MONUMENT MAG/WASHER
 ON SURFACE - ~~BELOW~~ ON _____
 OFFSET \odot PAVEMENT 11.1' LT : ~~RT~~
 ON TO LT EDGE PAVEMENT
 S.L.M. 165+84.17



HORZ.DATUM: NAD83 (2011) GEOID: NAVD88 2018
 GRID: NORTHING: 637037.564 EASTING: 1535901.116

RECORD: P.I.CONST.
 STA. 170+97.23
 $\Delta = 10^{\circ}00'$ RT
 $D = 3^{\circ}$
 FD SM.R.R.SPIKE
 4-24-03
 SET MAG/WASHER
 6-19-03, MB
 FD MAG/WASHER
 REF8
 5-05-21, JFO
 8/18/23, TDN



O.D.O.T. DISTRICT 2 SURVEY OFFICE

PERSONNEL

REFERENCE NO. 8

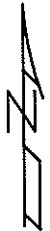
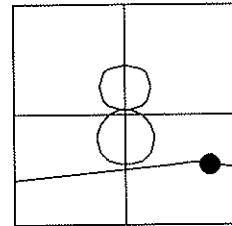
SHEET 5 OF 26

NOTES BARNHISEL
 H.C. CANTERBURY
 R.C. BARNHISEL
GLASS

DATE 4-24-03
 WEATHER CLEAR
 TEMP. +64°

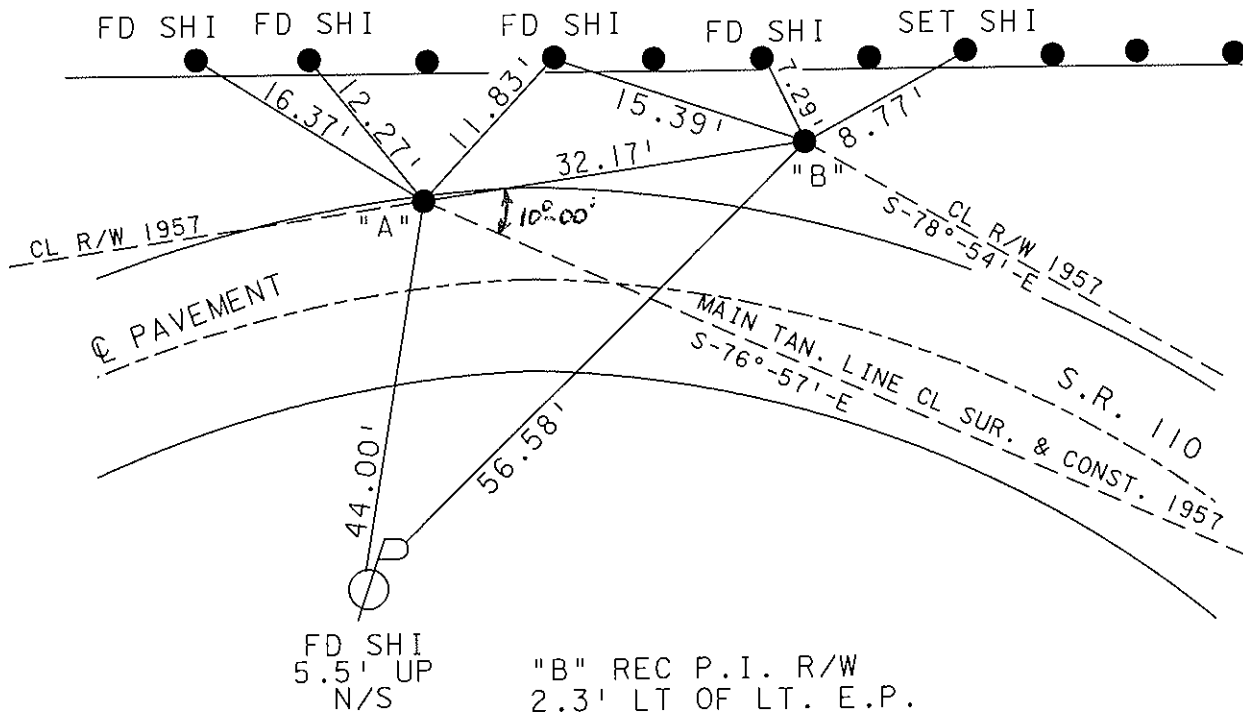
ROUTE S.R. 110
 COUNTY HENRY
 TOWNSHIP HARRISON
 SECTION 8
T 5 N R 7 E

TYPE MONUMENT "A" SM. R.R. SPIKE B=P.K. NAIL
 ON SURFACE ~~BELOW~~ YES
 LEFT - ☉ PAV'T A=11.1' B=14.2'
" A " ON LT EDGE PAVEMENT "B" 2.7' LT OF
S.L.M. A=165+69 B=166+01 LT EDGE



"A" REC P.I. CONST.
 STA. 170+97.23
 DELTA = 10° 1' 00" RT.
 D = 3°

RESET MAG NAILS & WASHERS
 6-19-03
 MB



FD SHI
 5.5' UP
 N/S

"B" REC P.I. R/W
 2.3' LT OF LT. E.P.
 13.3' LT. ☉ PAVT.
 DELTA = 8°-03' RT.
 D = 3°
 T = 134.39'

L = 268.33'
 E = 4.73'
 R = 1909.86'

O.D.O.T. DISTRICT 2 SURVEY OFFICE

PERSONNEL

REFERENCE NO. 8 SHEET 13 OF 34

NOTES Loehrke

H.C. CURTIS

R.C. ROMETO

DATE 5-27-92

WEATHER pt cloudy

TEMP. +64

ROUTE S.R. 110

COUNTY HENRY

TOWNSHIP HARRISON

SECTION 8

T 5 N R 7 E

Set SAME 10-27-92

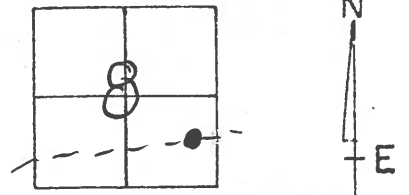
TYPE MONUMENT A Sm RR Spike "B" PK NAIL

ON SURFACE - BELOW YES

LEFT- & PAV'T. - RIGHT A = 10.8 B = 14.2

TO EDGE PAVEMENT A = 1.3 R to of Lt E.P. B = 2.2 Lt of LTOP

S.L.M. 165+69 B = 166+01



"A" Rec. P.I. CONST.

Sta 170+97.23

$\Delta = 10^{\circ}-00'$ Rt

D = 3'

"B" Rec. P.I. R/W

2.2' Lt of Lt. E.P.

13.3' Lt & PAVT.

$\Delta = 8^{\circ}-03'$ Rt.

D = 3'

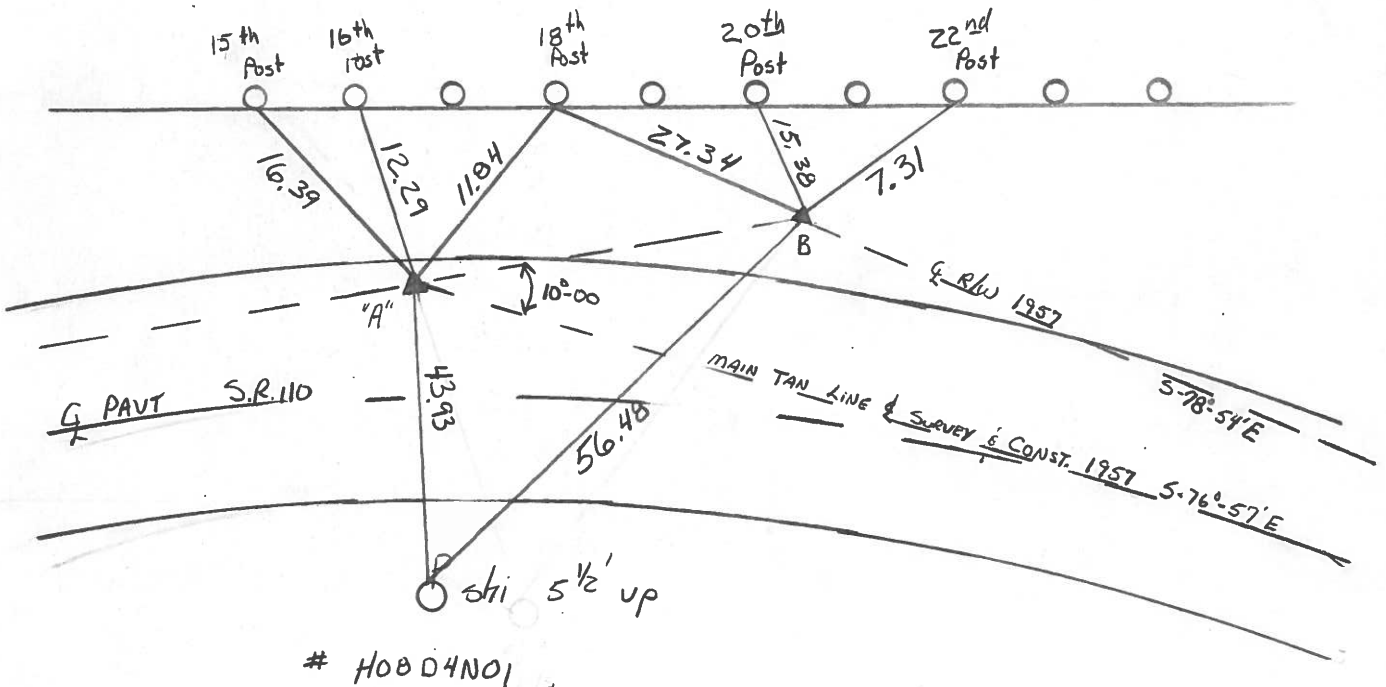
T = 134.39'

L = 268.33'

E = 4.73'

R = 1909.86'

BETWEEN 32.13



Q.D.O.T. DISTRICT 2 SURVEY OFFICE

SHEET _____ OF _____

County HENRY S.R. 110

Date 2-6-84

Township HARRISON

Weather FLURRIES

Section 8

Temp. +20°

T5N, R7E

Personnel BARNHISEL

HOUSEHOLDER

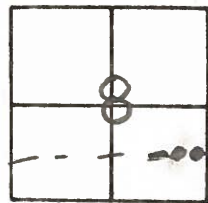
HOFFMAN

LOENAKE

#8

SLM = 165 + 80

SLM = 166 + 12



PT'A" 1" Pipe 1" Below SURFACE

PT'B" Fd 1/2" Copper Rod 1" Below SURFACE

Q CONST. PI STA 170+97.23

Q RW PI STA = 171+29.31

1.0 Rt of LEP

2.3 Lt of LEP

10.0 Lt of Q PAVT

13.3 Lt of Q PAVT

SET SMALL R.R. SPIK.

6/13/84

M.D.B.

$\Delta = 8^{\circ}03' RT$

$T = 134.39$

$D = 10^{\circ}00' RT$

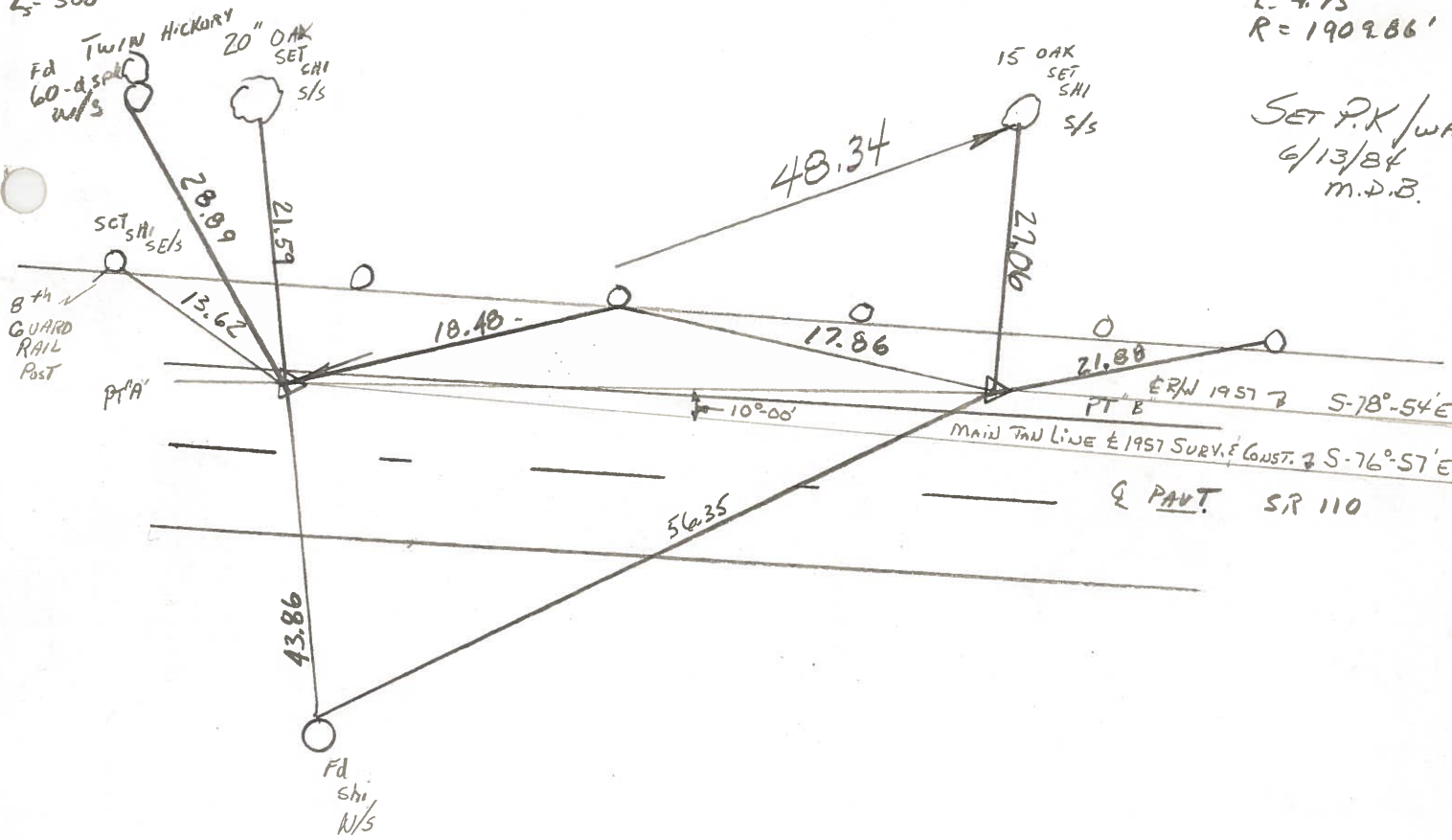
$L = 268.33'$

$D = 3'$

$E = 4.73$

$L_s = 300'$

$R = 1909.86'$



SET P.K. / WA
6/13/84
M.D.B.

PT'A' to Pt'B' 32.13'

PERSONNEL TITLE PERSONNEL TITLE

Red Beach
Newcomb
Knappe

COUNTY Henry

DATE Sept 72

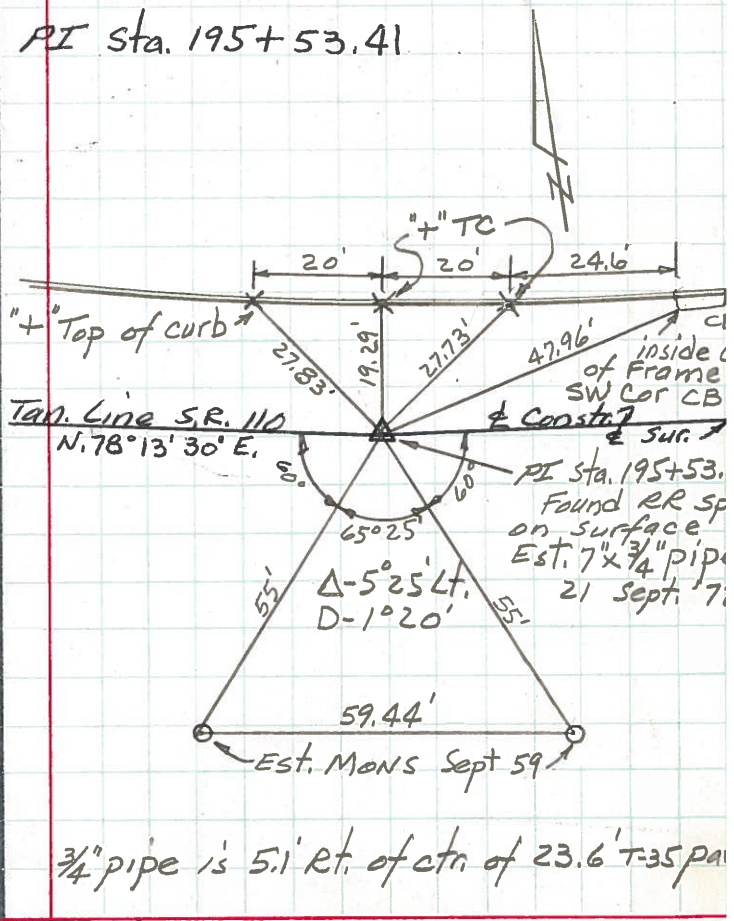
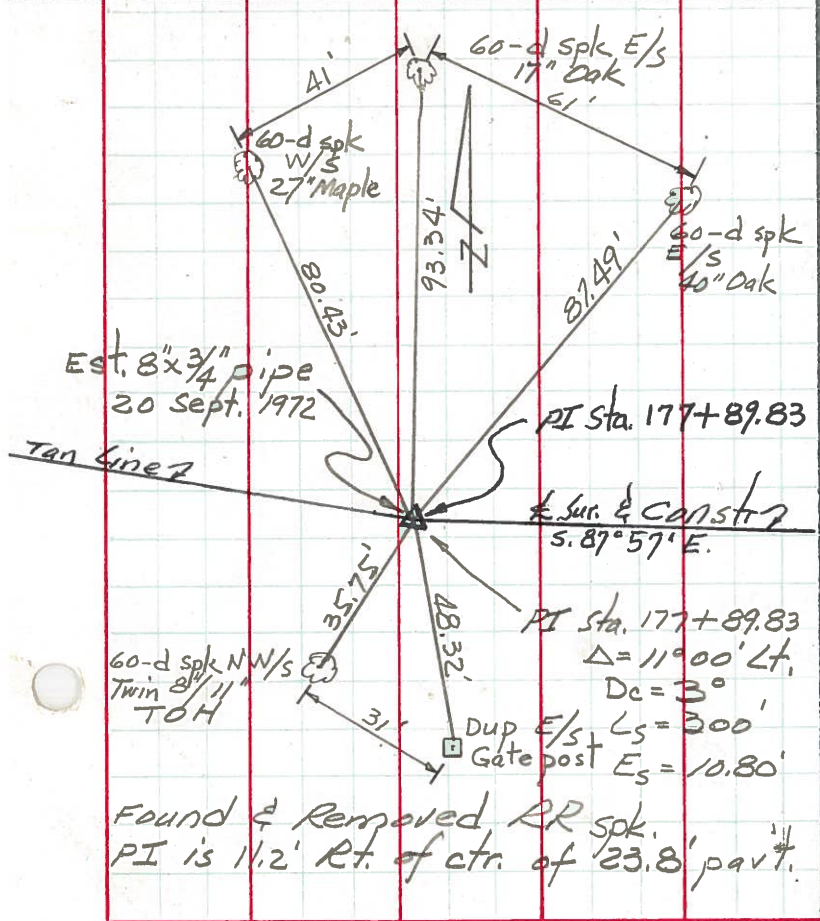
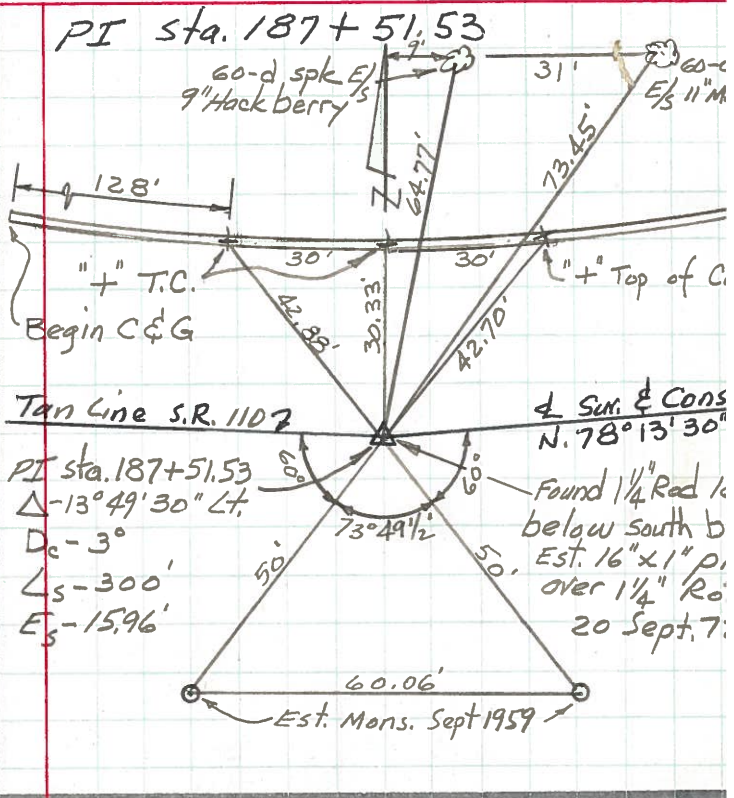
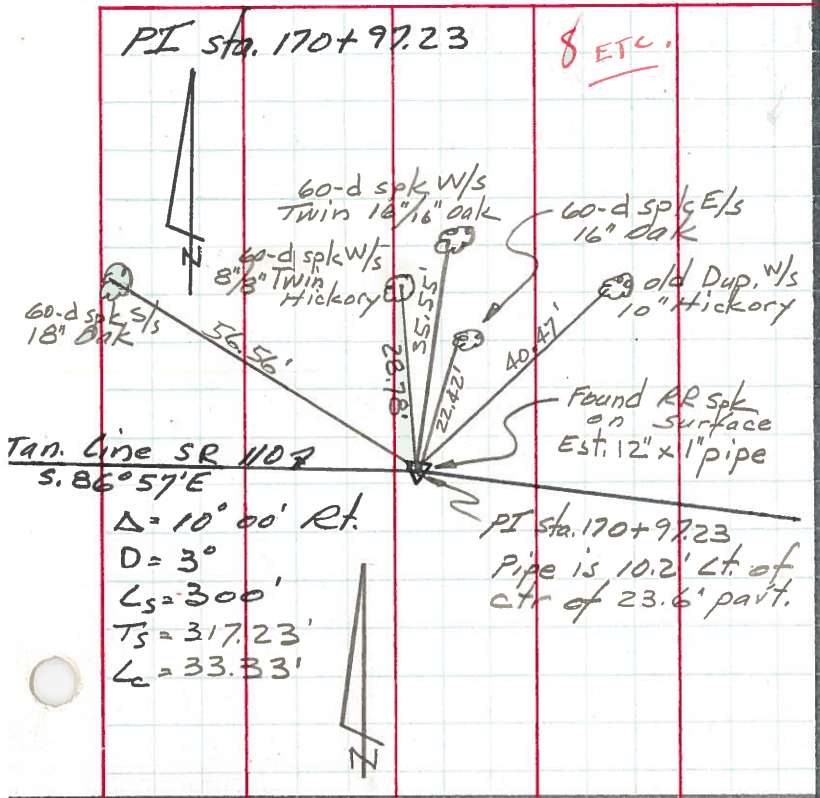
S. R. 110

WEATHER

SEC.

TEMP.

DESCRIPTION CONTROL POINTS JOB NO.



PERSONNEL	TITLE	PERSONNEL	TITLE	COUNTY	DATE
Ernsthausen				Henry	11-20-58
Donaldson				S. R. 110	WEATHER Clear
Text				SEC.	TEMP. 50°

DESCRIPTION: Ties To P.I.'s 119+41.91 TO 170+97.23
LEFT CENTER LINE RIGHT JOB NO.

