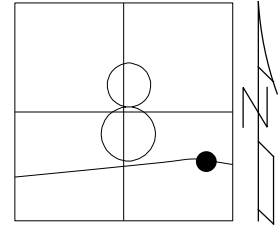


O.D.O.T. DISTRICT 2 SURVEY OFFICE (USE ONLY)

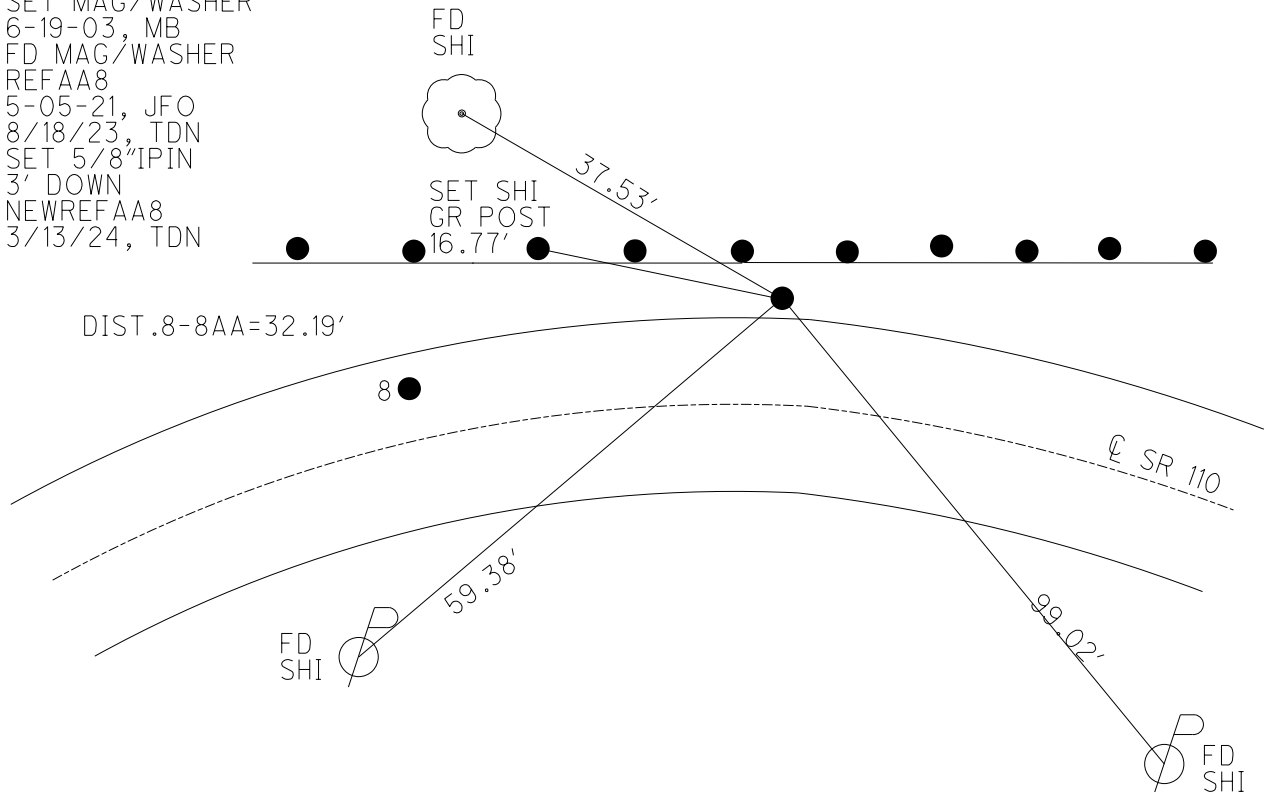
PERSONNEL _____ REFERENCE NO. 8 AA SHEET 24 OF 51
 NOTES MILLER DATE 3/13/24 ROUTE SR 110
 H.C. NIESE WEATHER CLEAR COUNTY HENRY
 R.C. RHOADES TEMP. 55° TOWNSHIP HARRISON
 SECTION 8
 DWG BY RHOADES PID 94321 T 5 N R 7 E

TYPE MONUMENT 5/8" IPIN
~~ON SURFACE~~ - BELOW 3"
 OFFSET $\text{\textcircled{C}}$ PAVEMENT 14.8' LT : ~~RT~~
2.2' TO LT EDGE PAVEMENT
 S.L.M. 166+16.04



HORIZ.DATUM: NAD83 (2011) GEOID: NAVD88 2018
 GRID: NORTHING: 637036.492 EASTING: 1535933.274

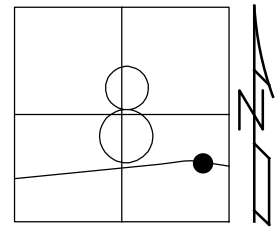
RECORD: P.I.R/W
 $\Delta = 8^{\circ}03'$ RT
 $L = 268.33'$
 $D = 3^{\circ}$
 $E = 4.73'$
 $T = 134.39'$
 $R = 1909.86'$
 FD P.K.NAIL
 4-24-03
 SET MAG/WASHER
 6-19-03, MB
 FD MAG/WASHER
 REF AA8
 5-05-21, JFO
 8/18/23, TDN
 SET 5/8" IPIN
 3' DOWN
 NEW REF AA8
 3/13/24, TDN



O.D.O.T. DISTRICT 2 SURVEY OFFICE (USE ONLY)

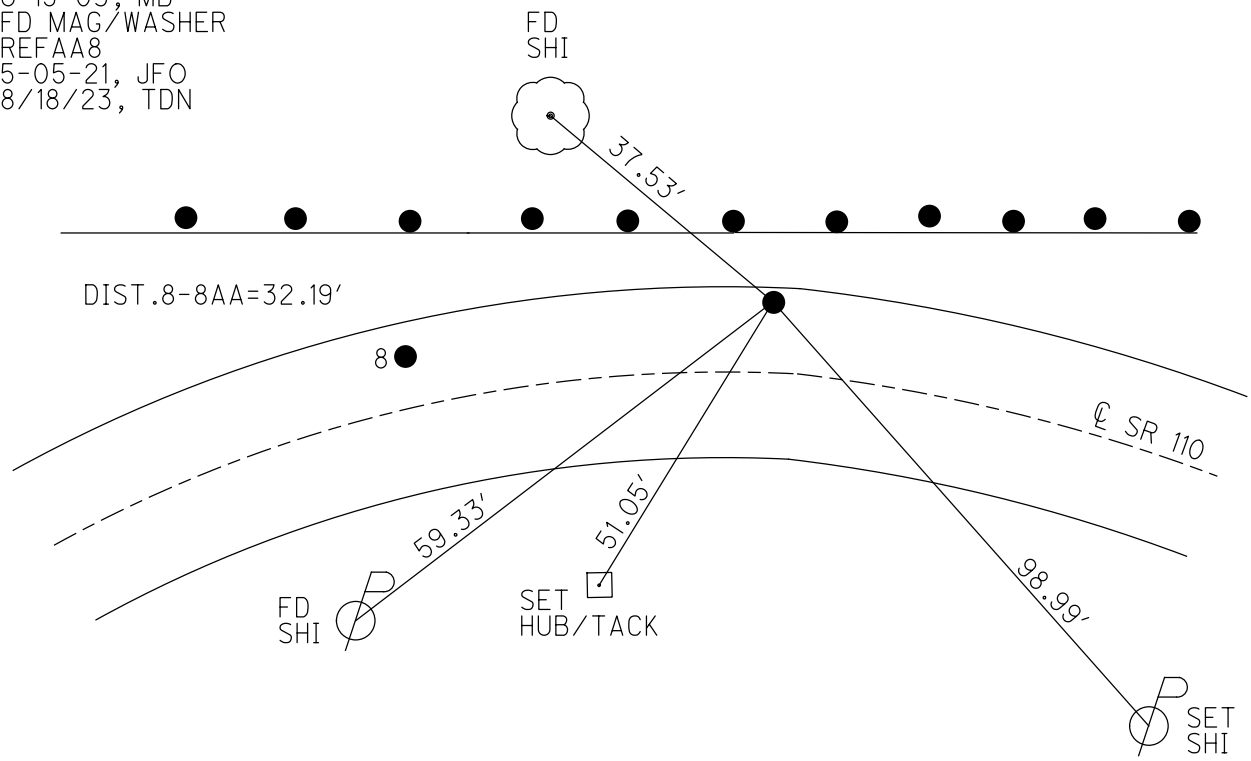
PERSONNEL _____ REFERENCE NO. 8 AA SHEET 17 OF 44
 NOTES ASTON DATE 8/18/23 ROUTE SR 110
 H.C. NIESE WEATHER CLEAR COUNTY HENRY
 R.C. RHOADES TEMP. 72° TOWNSHIP HARRISON
AUBLE SECTION 8
 DWG BY RHOADES PID 94321 T 5 N R 7 E

TYPE MONUMENT MAG/WASHER
 ON SURFACE - ~~BELOW~~ ON _____
 OFFSET \odot PAVEMENT 14.2' LT : ~~RT~~
2.7' TO LT EDGE PAVEMENT
 S.L.M. 166+16.04



HORIZ.DATUM: NAD83 (2011) GEOID: NAVD88 2018
 GRID: NORTHING: 637036.394 EASTING: 1535933.289

RECORD: P.I.R/W
 $\Delta = 8^{\circ}03' RT$
 $L = 268.33'$
 $D = 3^{\circ}$
 $E = 4.73'$
 $T = 134.39'$
 $R = 1909.86'$
 FD P.K.NAIL
 4-24-03
 SET MAG/WASHER
 6-19-03, MB
 FD MAG/WASHER
 REFAA8
 5-05-21, JFO
 8/18/23, TDN



O.D.O.T. DISTRICT 2 SURVEY OFFICE

PERSONNEL

REFERENCE NO. 8

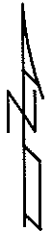
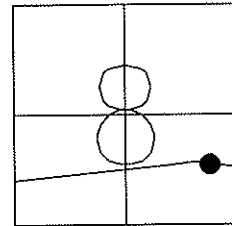
SHEET 5 OF 26

NOTES BARNHISEL
 H.C. CANTERBURY
 R.C. BARNHISEL
GLASS

DATE 4-24-03
 WEATHER CLEAR
 TEMP. +64°

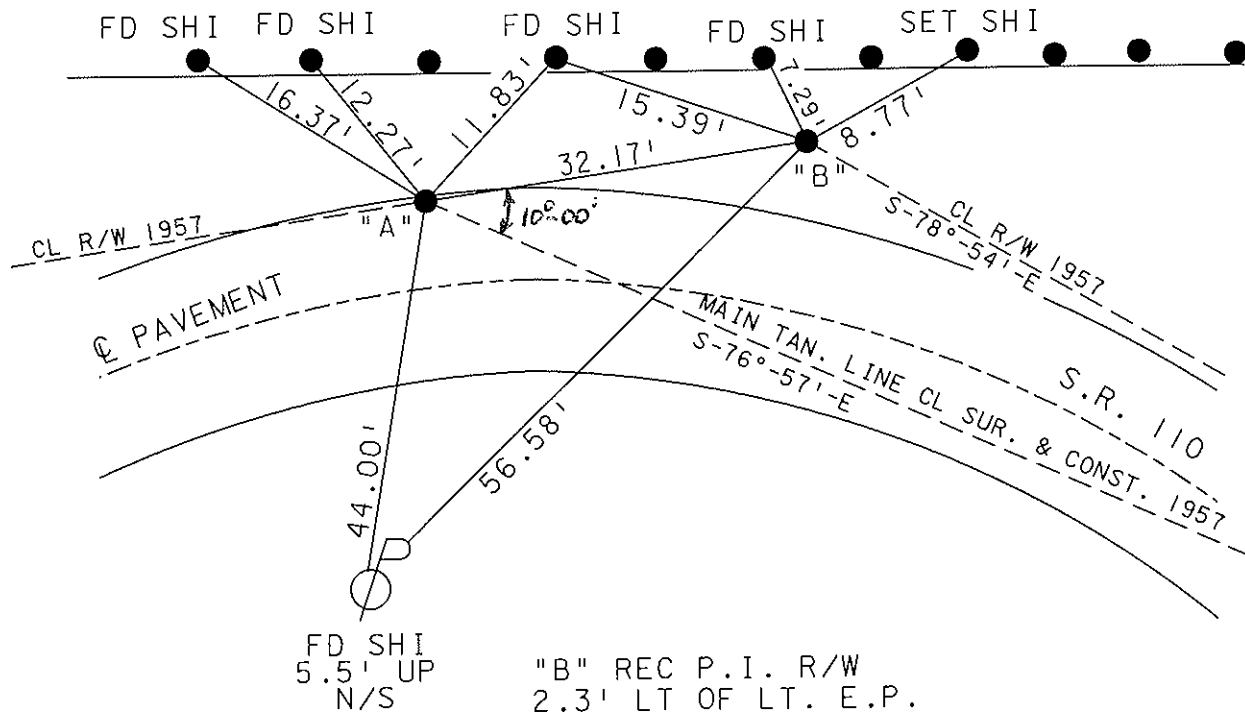
ROUTE S.R. 110
 COUNTY HENRY
 TOWNSHIP HARRISON
 SECTION 8
T 5 N R 7 E

TYPE MONUMENT "A" SM. R.R. SPIKE B=P.K. NAIL
 ON SURFACE ~~BELOW~~ YES
 LEFT - ☉ PAV'T A=11.1' B=14.2'
" A " ON LT EDGE PAVEMENT "B" 2.7' LT OF
S.L.M. A=165+69 B=166+01 LT EDGE



"A" REC P.I. CONST.
 STA. 170+97.23
 DELTA = 10° 1' 00" RT.
 D = 3°

RESET MAG NAILS & WASHERS
 6-19-03
 MB



FD SHI
 5.5' UP
 N/S

"B" REC P.I. R/W
 2.3' LT OF LT. E.P.
 13.3' LT. ☉ PAVT.
 DELTA = 8°-03' RT.
 D = 3°
 T = 134.39'

L = 268.33'
 E = 4.73'
 R = 1909.86'

O.D.O.T. DISTRICT 2 SURVEY OFFICE

PERSONNEL

REFERENCE NO. 8

SHEET 13 OF 34

NOTES LOEHRKE

H.C. CURTIS

R.C. ROMETO

DATE 5-27-92

WEATHER pt Cloudy

TEMP. +64

ROUTE S.R. 110

COUNTY HENRY

TOWNSHIP HARRISON

SECTION 8

T 5 N R 7 E

Set SAME 10-27-92

TYPE MONUMENT A Sm RR Spike "B" PK NAIL

ON SURFACE - ~~BELOW~~ YES

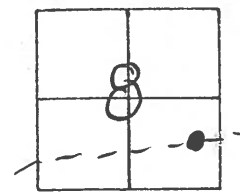
LEFT- & PAV'T. - ~~RIGHT~~ A=10.8 B=14.2

TO EDGE PAVEMENT A=1.3 Rt of Lt E.P.

S.L.M. 165+69

B=166+01

B=2.2 Lt of LTOP



"A" Rec. P.I. CONST.

Sta 170+97.23

$\Delta = 10^{\circ}-00'$ Rt

D = 3'

"B" Rec. P.I. R/W

2.2' Lt of Lt. E.P.

13.3' Lt of PAVT.

$\Delta = 8^{\circ}-03'$ Rt.

D = 3'

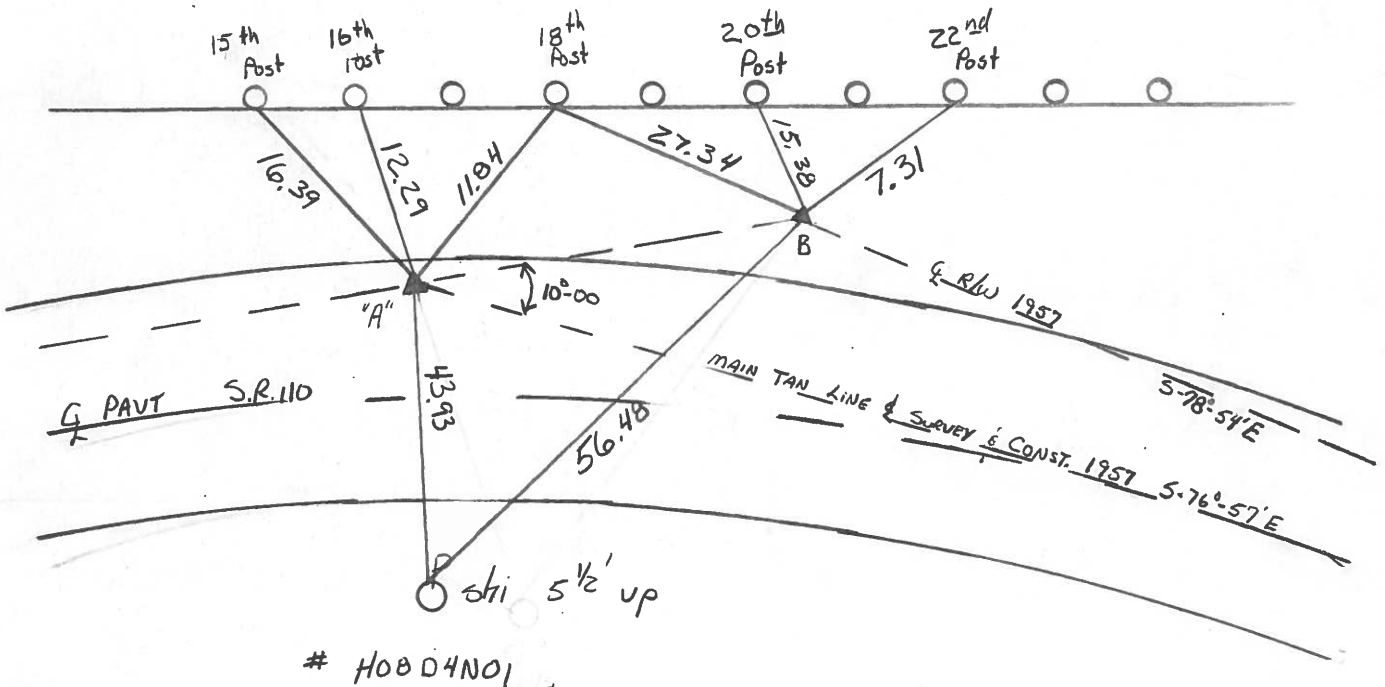
T = 134.39'

L = 268.33'

E = 4.73'

R = 1909.86'

BETWEEN 32.13



Q.D.O.T. DISTRICT 2 SURVEY OFFICE

SHEET _____ OF _____

County HENRY S.R. 110

Date 2-6-84

Township HARRISON

Weather FLURRIES

Section 8

Temp. +20°

T5N, R7E

Personnel BARNHISEL

HOUSEHOLDER

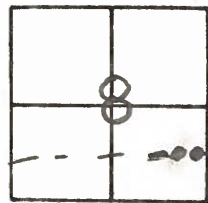
HOFFMAN

LOENAKE

#8

SLM = 165+80

SLM = 166+12



PT'A" 1" Pipe 1" Below SURFACE
Q CONST. PI STA 170+9.23

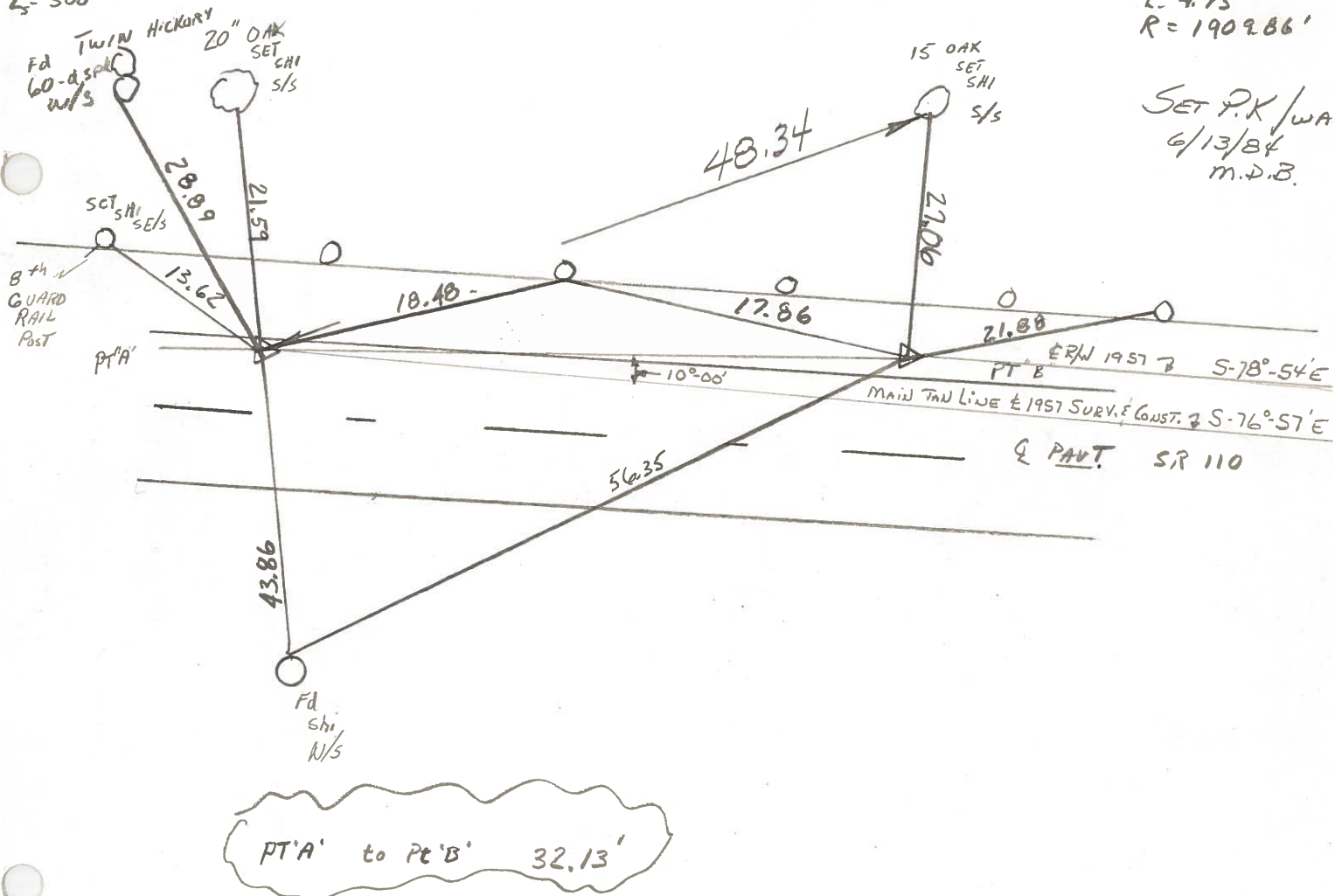
PT'B" Fd 1/2" Copper Rod 1" Below SURFACE
Q RW PI STA = 171+29.31

1.0 Rt of LEP
10.0 Lf of Q PAVT
D = 10°00' RT
P = 3'
L = 300'

SET SMALL R.R. SPK.
6/13/84
M.D.B.

2.3 Lf of LEP
13.3 Lf of Q PAVT
Δ = 8°03' RT T = 134.39
D = 3' L = 268.33'
E. 4.73
R = 1909.86'

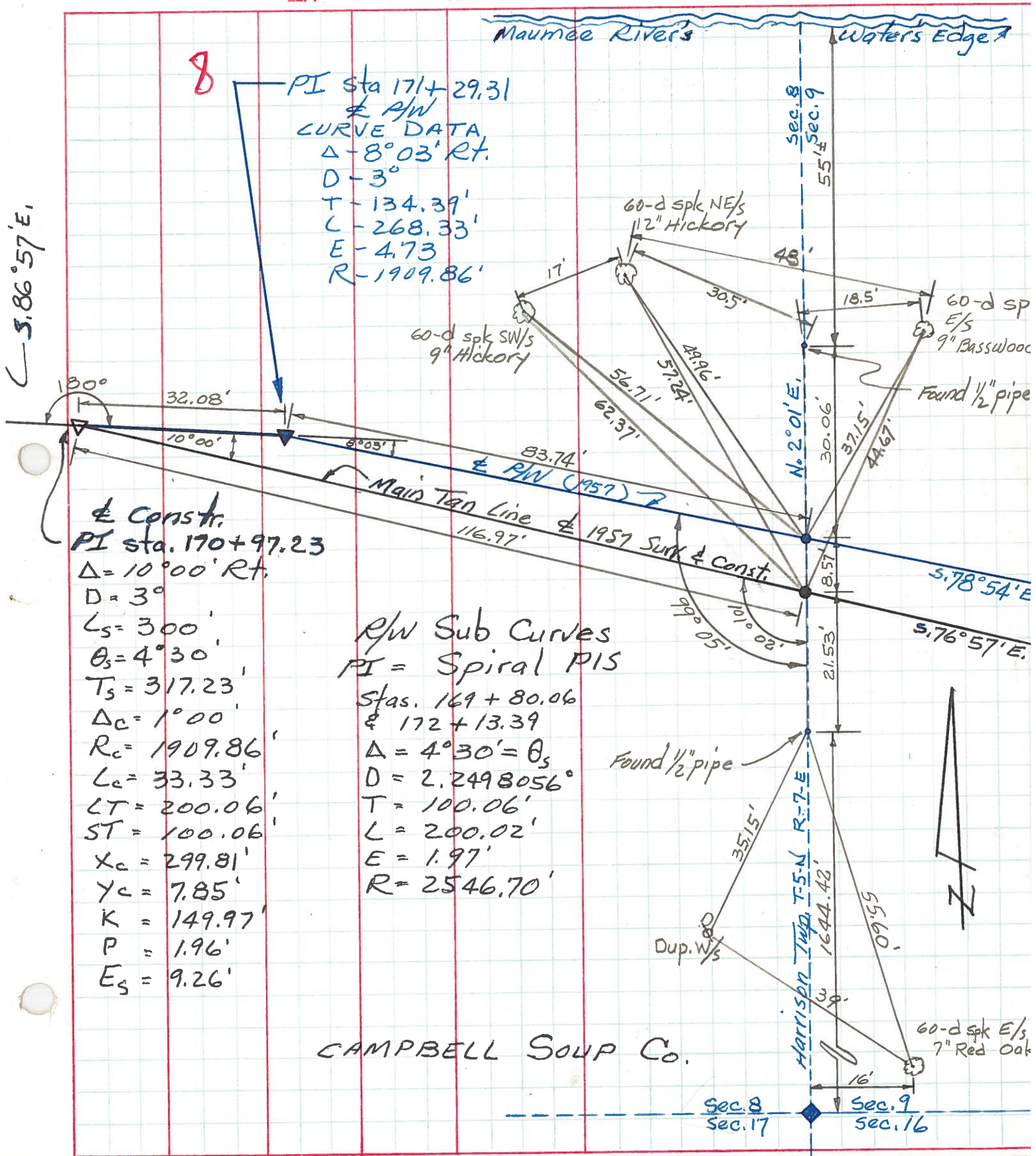
SET P.K. / WA
6/13/84
M.D.B.



PT'A' to Pt'B' 32.13'

PERSONNEL TITLE PERSONNEL TITLE COUNTY HENRY DATE 12 Oct. 197
 Red Beach / Newcomb / Knape S. R. 110 WEATHER
 SEC. 8 & 9 Harrison Twp TEMP.

DESCRIPTION CONTROL POINTS JOB NO.



8
 PI sta 171+29.31
 & R/W
 CURVE DATA
 $\Delta = 8^{\circ}03' \text{ Rt.}$
 $D = 3^{\circ}$
 $T = 134.39'$
 $L = 268.33'$
 $E = 4.73$
 $R = 1909.86'$

$5.86^{\circ}57' \text{ E.}$

& Constr.
 PI sta. 170+97.23
 $\Delta = 10^{\circ}00' \text{ Rt.}$
 $D = 3^{\circ}$
 $L_s = 300'$
 $\theta_s = 4^{\circ}30'$
 $T_s = 317.23$
 $\Delta_c = 1^{\circ}00'$
 $R_c = 1909.86'$
 $L_c = 33.33'$
 $LT = 200.06'$
 $ST = 100.06'$
 $X_c = 299.81'$
 $Y_c = 7.85'$
 $K = 149.97'$
 $P = 1.96'$
 $E_s = 9.26'$

R/W Sub Curves
 PI = Spiral PIS
 Stas. 169+80.06
 & 172+13.39
 $\Delta = 4^{\circ}30' = \theta_s$
 $D = 2.2498056^{\circ}$
 $T = 100.06'$
 $L = 200.02'$
 $E = 1.97'$
 $R = 2546.70'$

CAMPBELL SOUP CO.

Sec. 8 / Sec. 17 Sec. 9 / Sec. 16

PERSONNEL TITLE PERSONNEL TITLE

Red Beach
Newcomb
Knappe

COUNTY Henry

DATE Sept 72

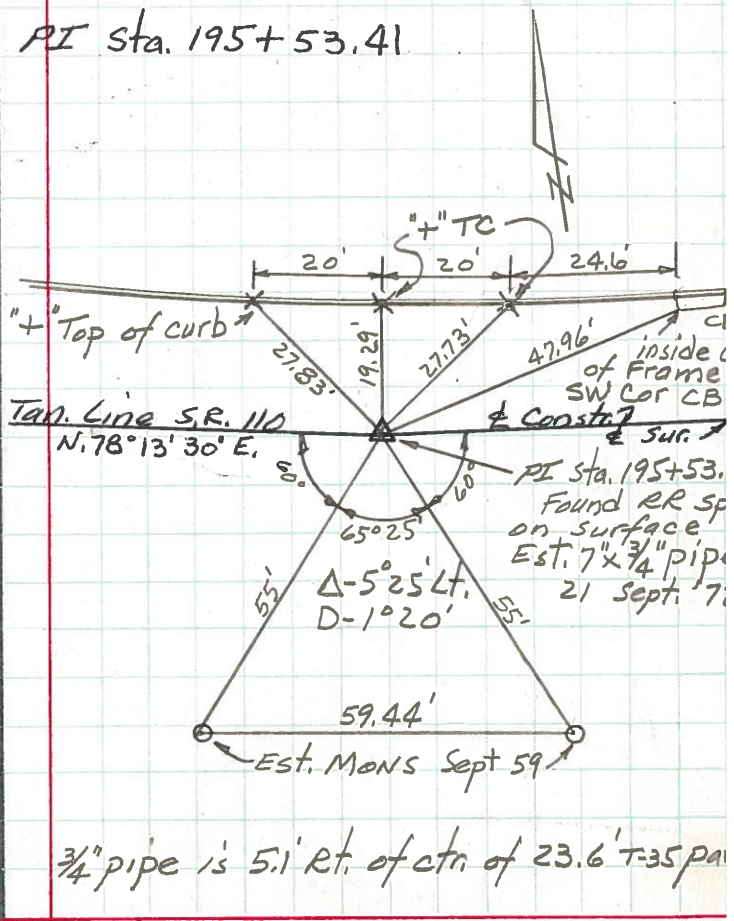
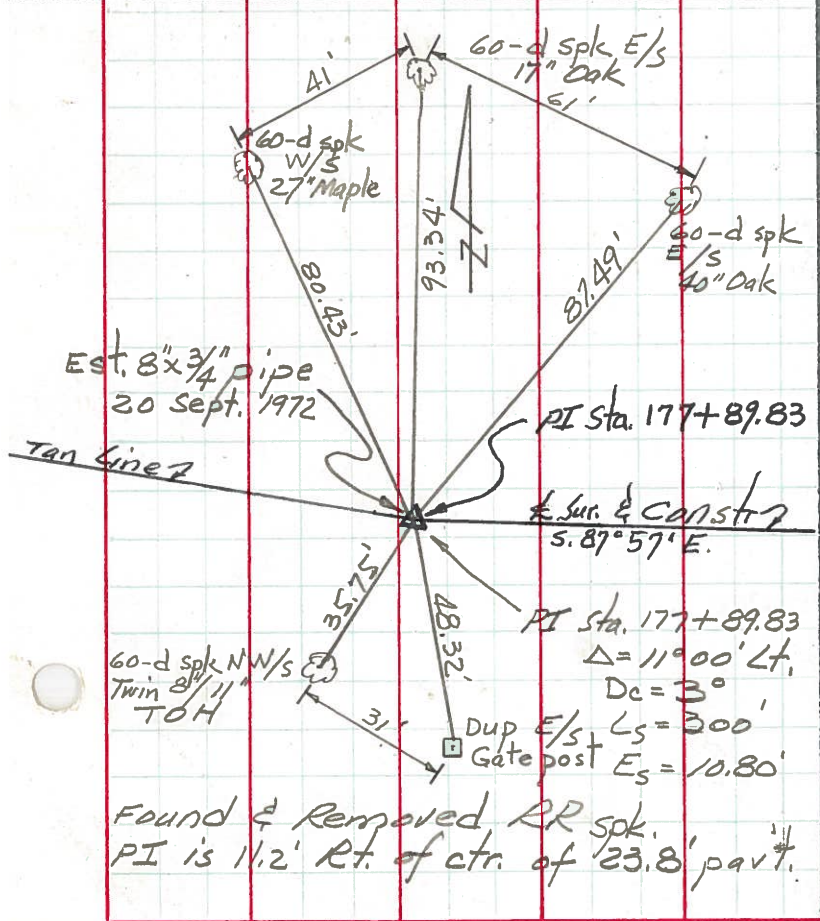
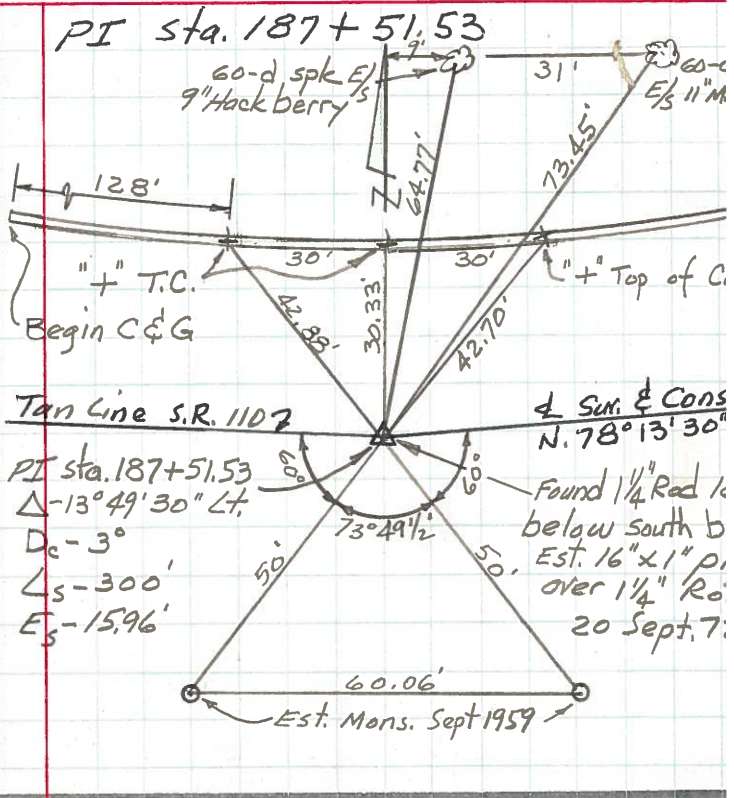
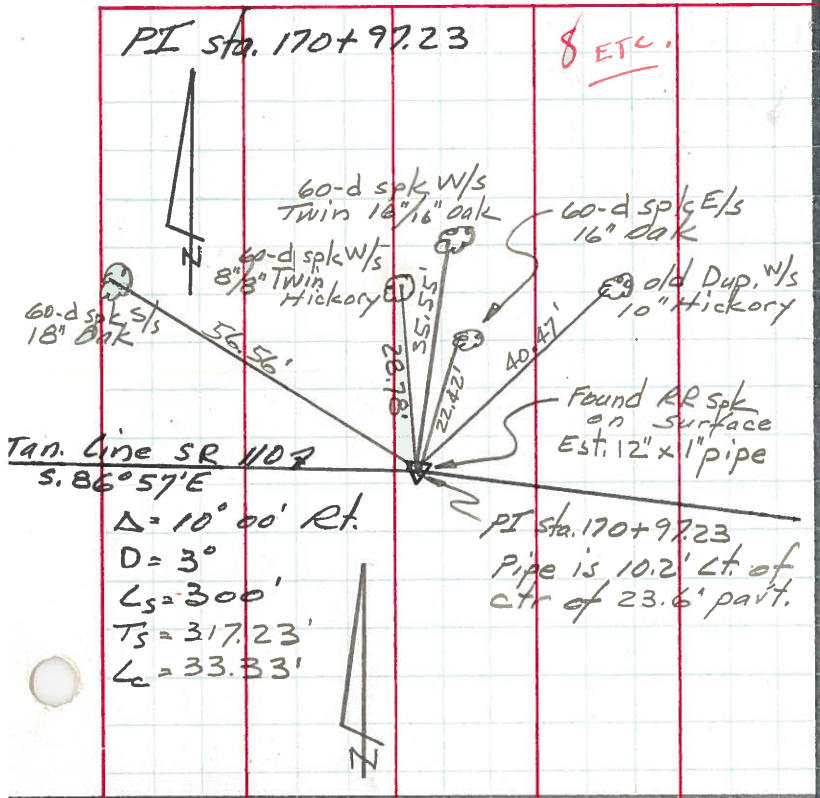
S. R. 110

WEATHER

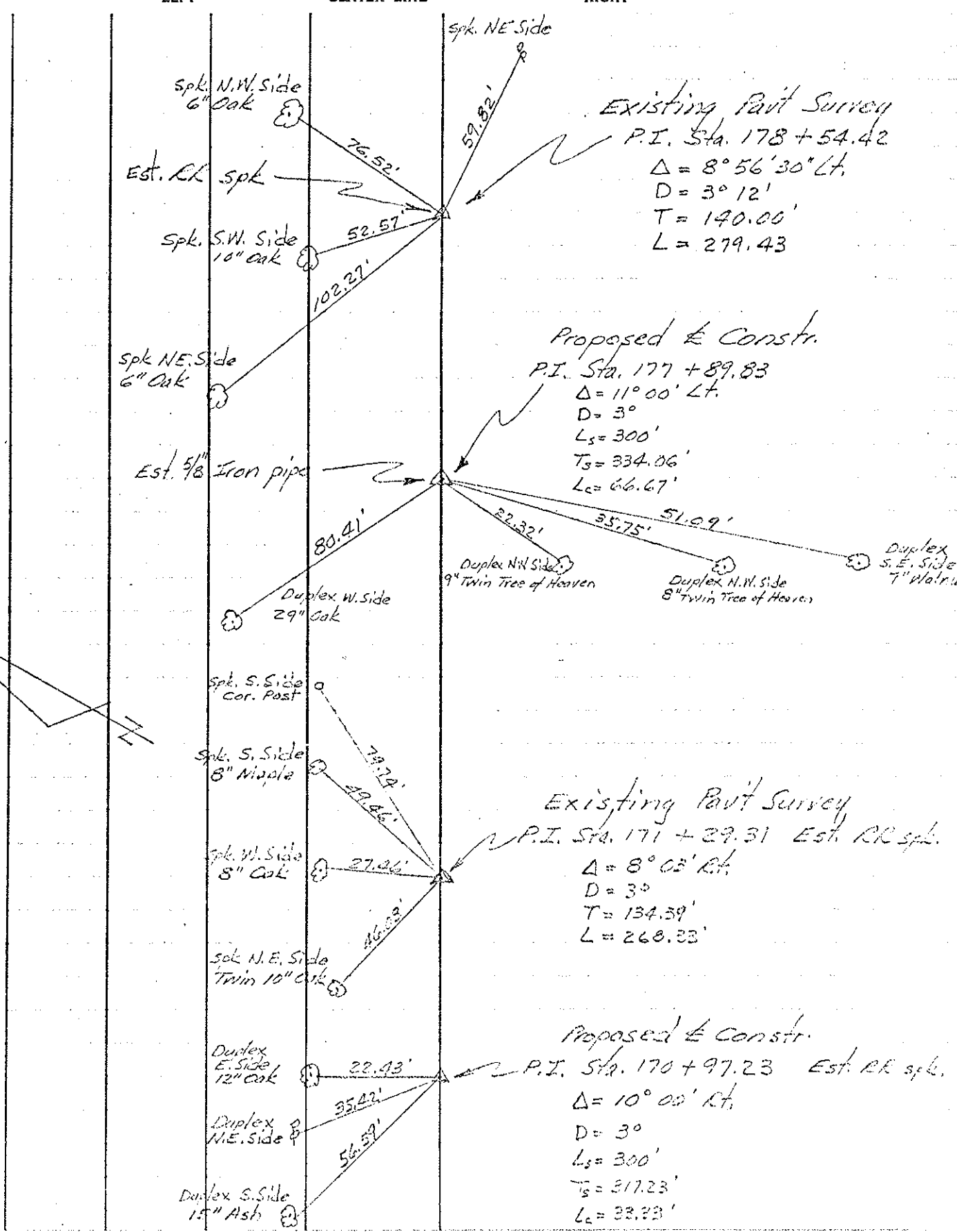
SEC.

TEMP.

DESCRIPTION CONTROL POINTS JOB NO.



PERSONNEL	TITLE	PERSONNEL	TITLE	COUNTY	DATE
<u>Beach</u>		<u>Hoff</u>		<u>Henry</u>	<u>Dec. 1957</u>
<u>Ambruster</u>	<u>+</u>	<u>Harris</u>		S. R. <u>110</u>	WEATHER
<u>Ruffer</u>		<u>Ruchener</u>		SEC. <u>2.22</u>	TEMP
<u>Knappe</u>		<u>Delvanthal</u>		DESCRIPTION <u>CONTROL POINTS</u>	JOB NO.
				<u>2</u>	



PERSONNEL	TITLE	PERSONNEL	TITLE	COUNTY	DATE
Beach		Hoff		Henry	Dec. 1957
Armbruster	π	Harris		S. R. 110	WEATHER
Rutter		Ruchener		SEC. 2.22	TEMP.
Knape		Delvanthal		ALIGNMENT	JOB NO.

DESCRIPTION ALIGNMENT sheet #3

