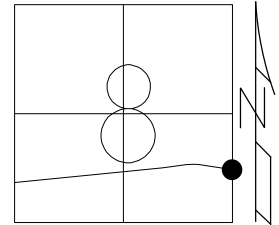


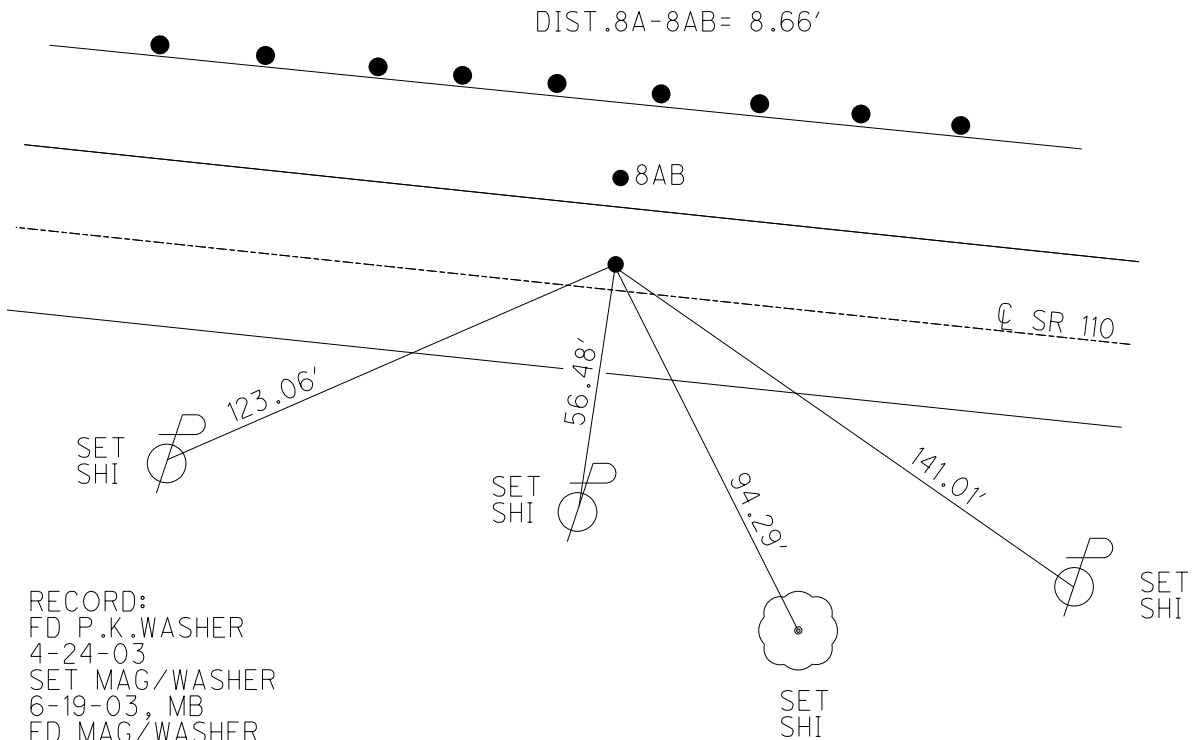
O.D.O.T. DISTRICT 2 SURVEY OFFICE (USE ONLY)

PERSONNEL _____ REFERENCE NO. 8 A SHEET 25 OF 51
 NOTES ASTON DATE 3/7/24 ROUTE SR 110
 H.C. NIESE WEATHER CLOUDY COUNTY HENRY
 R.C. ASTON TEMP. 42° TOWNSHIP HARRISON
 SECTION 8
 DWG BY RHOADES PID 94321 T 5 N R 7 E

TYPE MONUMENT MAG/WASHER
 ON SURFACE - ~~BELOW~~ ON
 OFFSET \bar{C} PAVEMENT 4.1' LT : ~~RT~~
7.2' TO LT EDGE PAVEMENT
 S.L.M. 167+00.60



HORIZ.DATUM: NAD83 (2011) GEOID: NAVD88 2018
 GRID: NORTHING: 637013.035 EASTING: 1536015.461

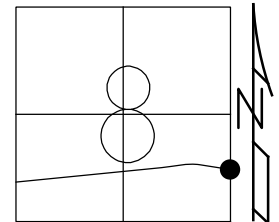


RECORD:
 FD P.K.WASHER
 4-24-03
 SET MAG/WASHER
 6-19-03, MB
 FD MAG/WASHER
 REFA8
 5-05-21, JFO
 FD MAG/WASHER
 REFA8
 8/18/23, TDN
 SET MAG/WASHER
 3/7/24, TDN

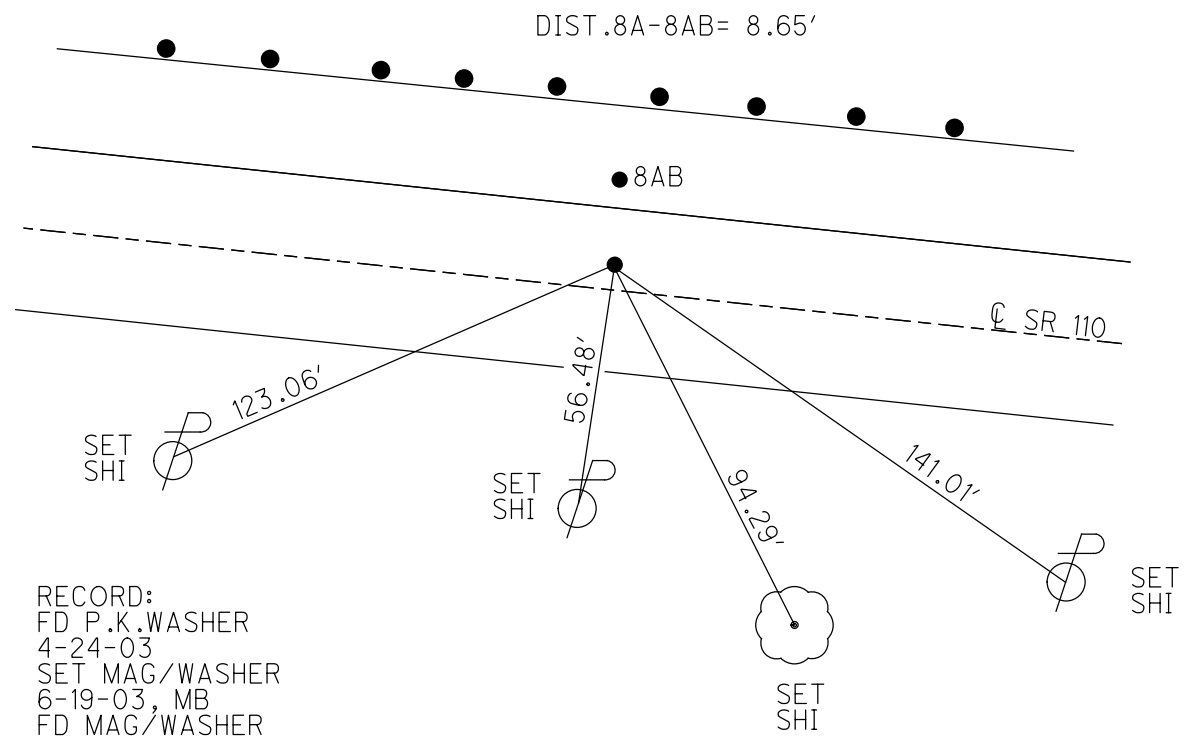
O.D.O.T. DISTRICT 2 SURVEY OFFICE (USE ONLY)

PERSONNEL _____ REFERENCE NO. 8 A SHEET 18 OF 44
 NOTES ASTON DATE 8/18/23 ROUTE SR 110
 H.C. NIESE WEATHER CLEAR COUNTY HENRY
 R.C. RHOADES TEMP. 72° TOWNSHIP HARRISON
AUBLE SECTION 8
 DWG BY RHOADES PID 94321 T 5 N R 7 E

TYPE MONUMENT MAG/WASHER
 ON SURFACE - ~~BELOW~~ ON _____
 OFFSET \odot PAVEMENT 4.1' LT : ~~RT~~
7.2' TO LT EDGE PAVEMENT
 S.L.M. 167+00.60



HORZ. DATUM: NAD83 (2011) GEOID: NAVD88 2018
 GRID: NORTHING: 637013.035 EASTING: 1536015.461



RECORD:
 FD P.K. WASHER
 4-24-03
 SET MAG/WASHER
 6-19-03, MB
 FD MAG/WASHER
 REFA8
 5-05-21, JFO
 FD MAG/WASHER
 REFA8
 8/18/23, TDN

O.D.O.T. DISTRICT 2 SURVEY OFFICE

PERSONNEL

REFERENCE NO. 8-A

SHEET 4 OF 26

NOTES BARNISEL

DATE 4-24-03

ROUTE S.R. 110

H.C. CANTERBURY

WEATHER PT. CLOUDY

COUNTY HENRY

R.C. BARNISEL

TEMP. +64°

TOWNSHIP HARRISON

GLASS

SECTION 8

T 5 N R 7 E

TYPE MONUMENT

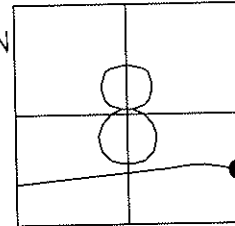
"A" PK/WASHER
"B" SM SPK

ON SURFACE - BELOW "A" SURFACE/"B" 2" DOWN

LEFT - \odot PAV'T A=4.1 B=12.6

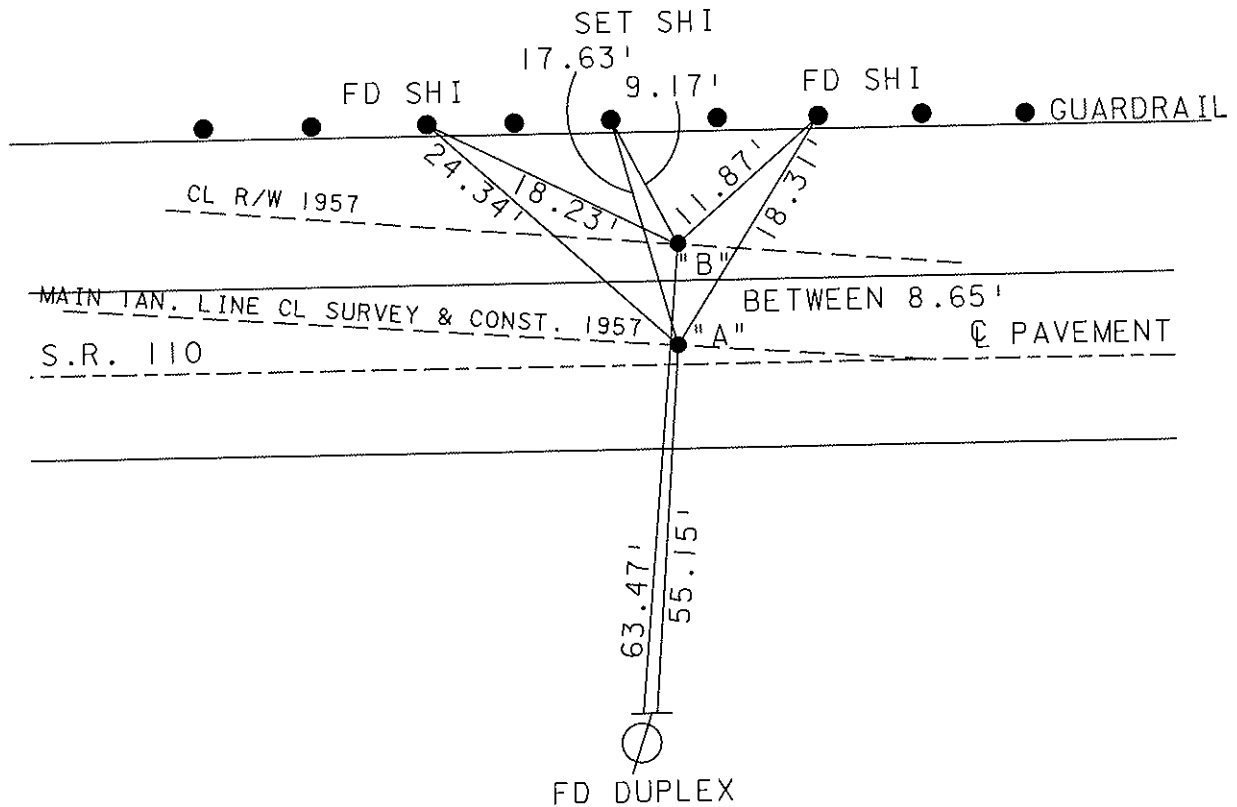
"A" 7.2' TO LT. EDGE PAVEMENT "B" 1.4' LT OF LT EDGE

S.L.M. "A"=166+86 "B"=166+85



RESET MAG NAILS & WASHERS
6-19-03
MB

RECORD: BOTH POINTS ARE ON N/S 1/2 SEC. LINE



O.D.O.T. DISTRICT 2 SURVEY OFFICE

PERSONNEL

REFERENCE NO. 8A

SHEET 14 OF 34

NOTES LOHRKE

H.C. CURTIS

R.C. ROMETO

DATE 5-27-92

WEATHER Pt Cloudy

TEMP. 64

ROUTE S.R. 110

COUNTY HENRY

TOWNSHIP HARRISON

SECTION 8

T 5 N 7 E

Set P.K / WASHERS
10-27-92

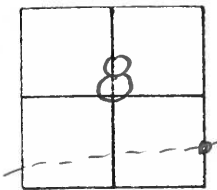
TYPE MONUMENT Sm. R.R. Spikes

ON SURFACE - BELOW Yes

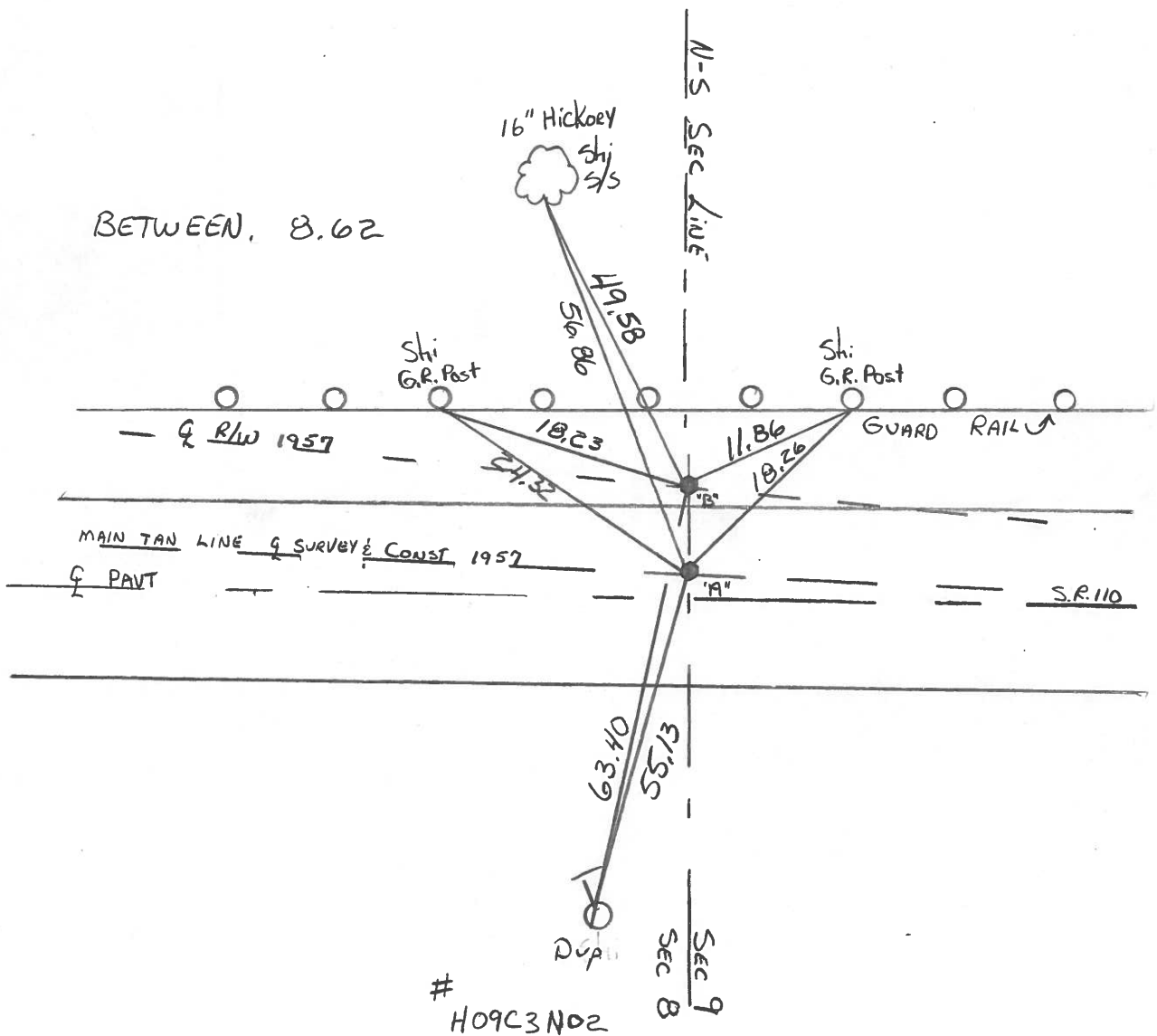
LEFT-OF PAV'T. - RIGHT A=3.4 B=11.8

B=0.5 TO Lt EDGE PAVEMENT

S.L.M. A=166+86 B=166+85



BETWEEN, 8.62



O.D.O.T. DISTRICT 2 SURVEY OFFICE

SHEET _____ OF _____

County HENRY S.R. 110

Date 2-6-84

Township HARRISON

Weather FLURRIES

Section 8

Temp. +20°

T5N, R7E

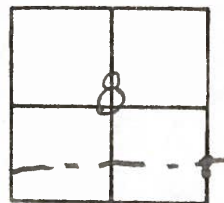
Personnel BARNHISEL

HOUSEHOLDER

HOFFMAN

LOHRKE

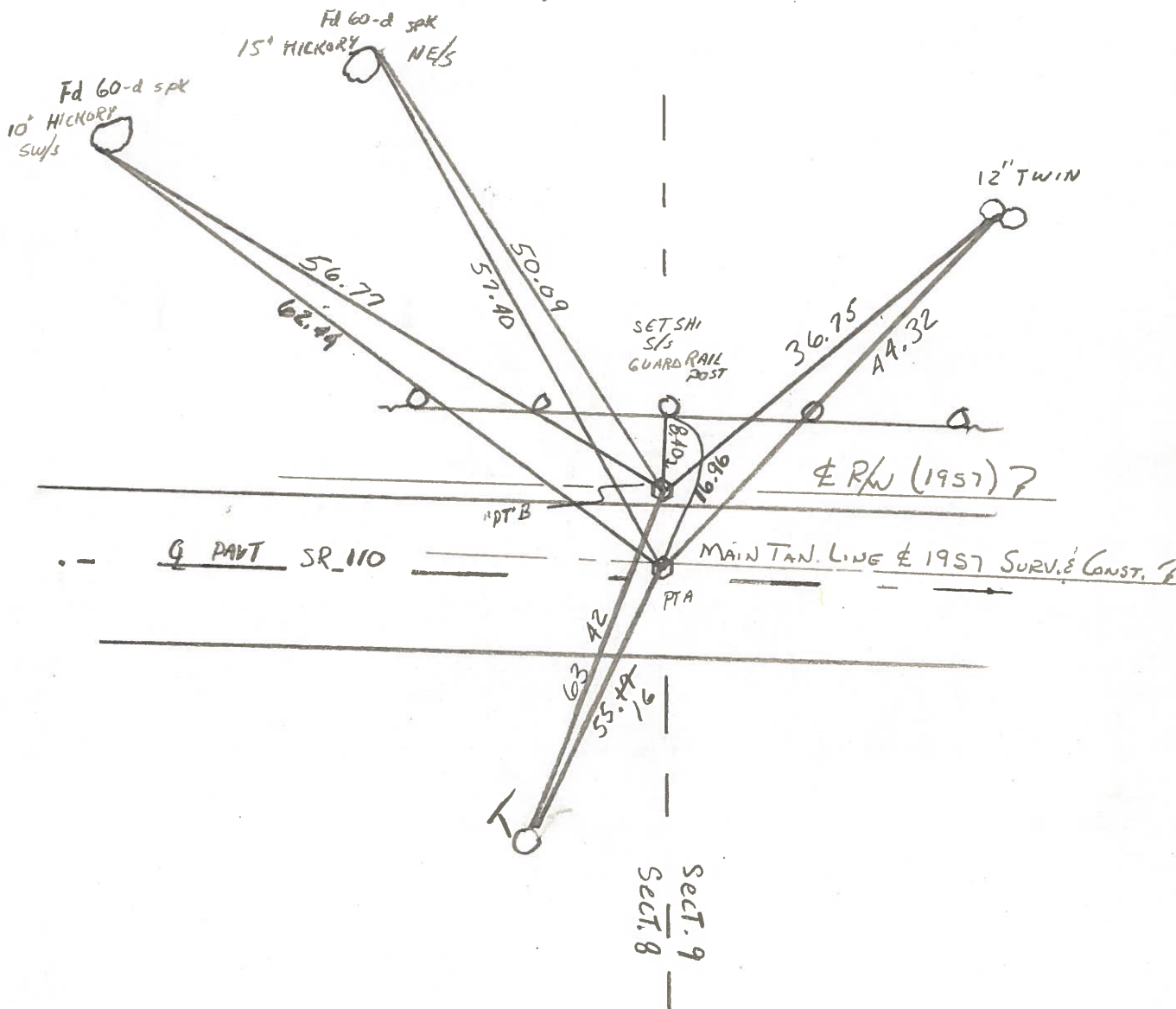
8A



PTA SLM 166+94
 Fd 3/4 PIPE 1" BELOW SURFACE
 3.5 LF OF Q PAUT
 7.6 R/L of LEP
 PT ON MAIN TAN LINE Q SURV & CONST. 1957

SET SMALL P.R. SPIKES
 @ BOTH PTS.
 6/13/84
 M.D.B.
 (8.58 BETWEEN
 PT. "A" & "B")

SLM 166+95
 PTB Fd 3/4 PIPE 1" BELOW SURF
 1.0 LF OF LEP
 12.0 LF OF Q PAUT
 PT IS ON R/W 1957



PERSONNEL	TITLE	PERSONNEL	TITLE	COUNTY	DATE
<u>Beach</u>		<u>Hoff</u>		<u>Henry</u>	<u>Dec. 1957</u>
<u>Armbruster</u>	<u>π</u>	<u>Harris</u>		S. R. <u>110</u>	WEATHER
<u>Rutter</u>		<u>Ruchener</u>		SEC. <u>2.22</u>	TEMP.
<u>Knape</u>		<u>Delvanthal</u>		DESCRIPTION <u>ALIGNMENT</u>	JOB NO.
				<u>sheet #3</u>	

