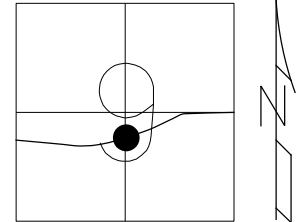


O.D.O.T. DISTRICT 2 SURVEY OFFICE (USE ONLY)

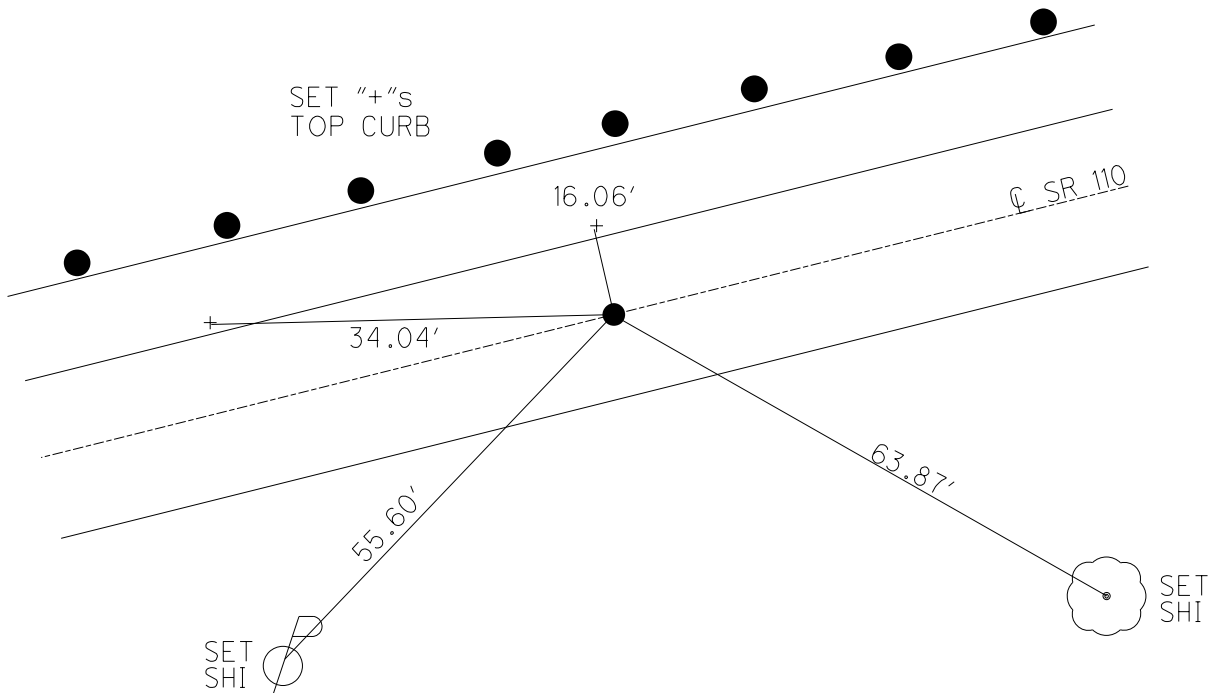
PERSONNEL _____ REFERENCE NO. 8 E SHEET 30 OF 51
 NOTES ASTON DATE 3/7/24 ROUTE SR 110
 H.C. NIESE WEATHER CLOUDY COUNTY HENRY
 R.C. ASTON TEMP. 42° TOWNSHIP HARRISON
 SECTION 9
 DWG BY RHOADES PID 94321 T 5 N R 7 E

TYPE MONUMENT MAG/WASHER
 ON SURFACE - ~~BELOW~~ ON _____
 OFFSET \perp PAVEMENT 0.6' LT : ~~RT~~
11.3' TO LT EDGE PAVEMENT
 S.L.M. 194+01.89



HORIZ.DATUM: NAD83 (2011) GEOID: NAVD88 2018
 GRID: NORTHING: 637166.207 EASTING: 1538670.383

RECORD: P.O.T.
 STA. 199+13.15
 FD P.K.WASHER
 4-25-03
 SET MAG/WASHER
 6-19-03, MB
 FD MAG/WASHER
 REF E8
 5-05-21, JFO
 FD MAG NAIL
 8/18/23, TDN
 SET MAG/WASHER
 3/7/24, TDN



O.D.O.T. DISTRICT 2 SURVEY OFFICE (USE ONLY)

PERSONNEL _____ REFERENCE NO. 8 E SHEET 23 OF 44

NOTES ASTON DATE 8/18/23 ROUTE SR 110
 H.C. NIESE WEATHER CLEAR COUNTY HENRY
 R.C. RHOADES TEMP. 72° TOWNSHIP HARRISON
AUBLE SECTION 9

DWG BY RHOADES PID 94321 T 5 N R 7 E

TYPE MONUMENT MAG NAIL

ON SURFACE - ~~BELOW~~ ON _____

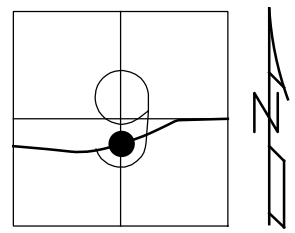
OFFSET \varnothing PAVEMENT ON _____ LT : RT

11.4' TO LT EDGE PAVEMENT

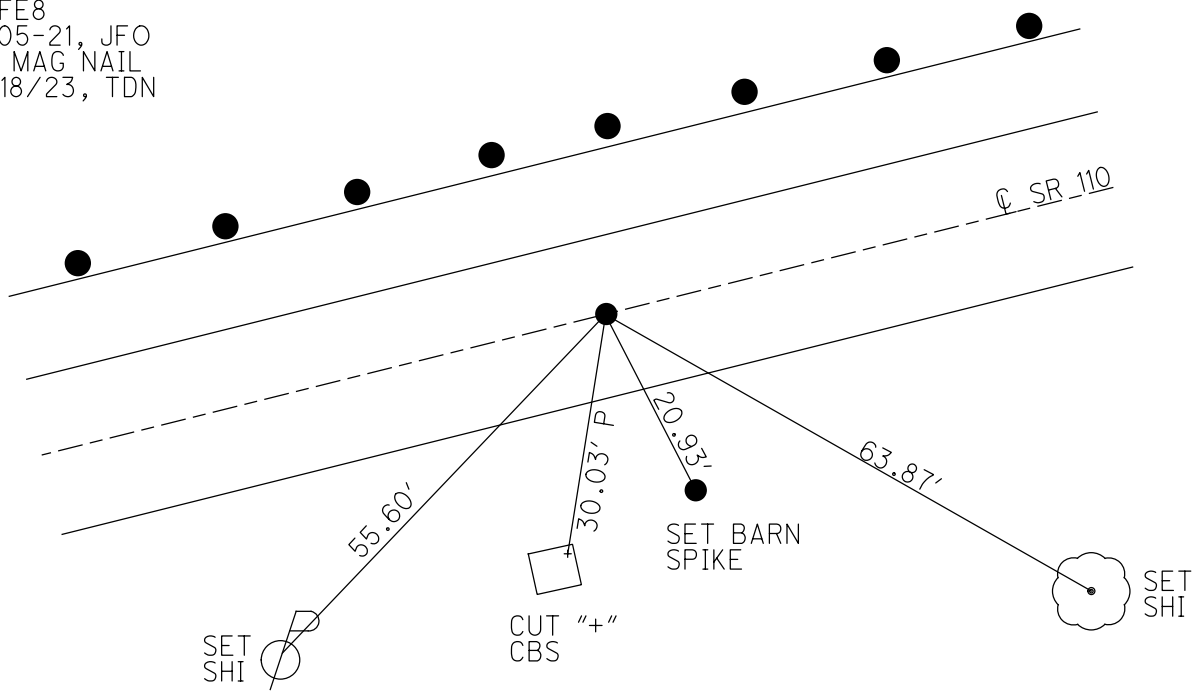
S.L.M. 194+01.89

HORIZ.DATUM: NAD83 (2011) GEOID: NAVD88 2018

GRID: NORTHING: 637166.207 EASTING: 1538670.383



RECORD: P.O.T.
 STA. 199+13.15
 FD P.K.WASHER
 4-25-03
 SET MAG/WASHER
 6-19-03, MB
 FD MAG/WASHER
 REFE8
 5-05-21, JFO
 FD MAG NAIL
 8/18/23, TDN



O.D.O.T. DISTRICT 2 SURVEY OFFICE

PERSONNEL

REFERENCE NO. 8-€

SHEET 10 OF 26

NOTES BRUMBAUGH

DATE 4-25-03

ROUTE S.R. 110

H.C. BARNHISEL

WEATHER CLOUD

COUNTY HENRY

R.C. RYALL

TEMP. +60°

TOWNSHIP HARRISON

GLASS

SECTION 9

T 5 N R 7 E

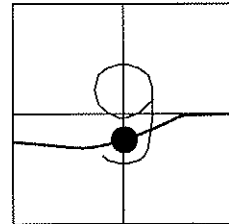
TYPE MONUMENT P.K. WASHER

ON SURFACE - ~~BELOW~~ YES

LEFT-Q PAV'T - ~~RIGHT~~ 0.5'

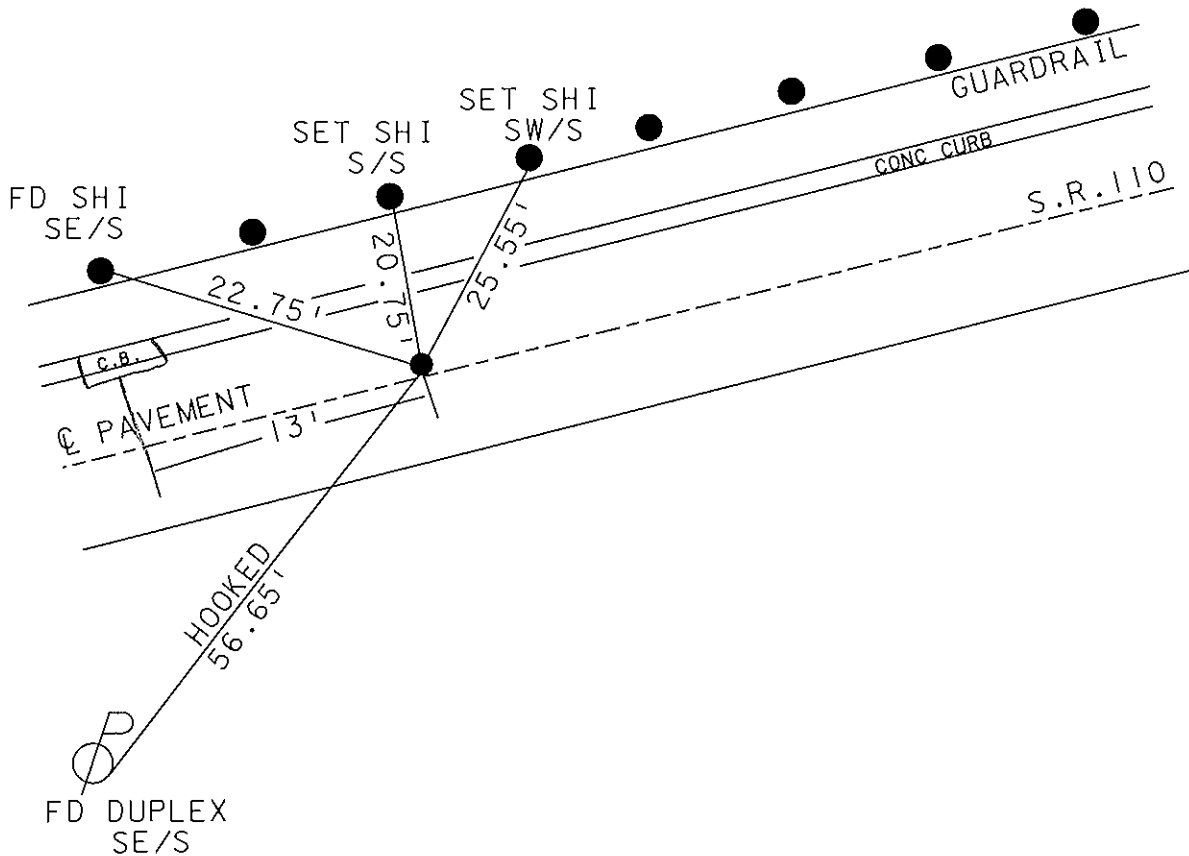
11.4' TO LT. EDGE PAVEMENT

S.L.M. 193+88



RECORD P.O.T.
STA. 199+13.15

RESET MAG NAIL & WASHER
6-19-03
MB



O.D.O.T. DISTRICT 2 SURVEY OFFICE

PERSONNEL

REFERENCE NO. 8E

SHEET 18 OF 34

NOTES LOEHRKE

H.C. CURTIS

R.C. ROMETS

DATE 5-28-92

WEATHER CLEAR

TEMP. +62

ROUTE S.R. 110

COUNTY HENRY

TOWNSHIP HARRISON

SECTION 9

T 5 N R 7 E

Set P.K. WASHER
10-27-92

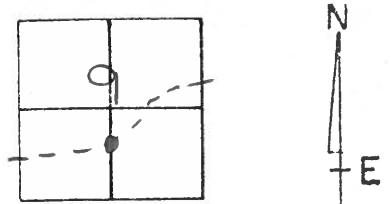
TYPE MONUMENT Sm. R.R. Spike

ON SURFACE - ~~BELOW~~ Yes

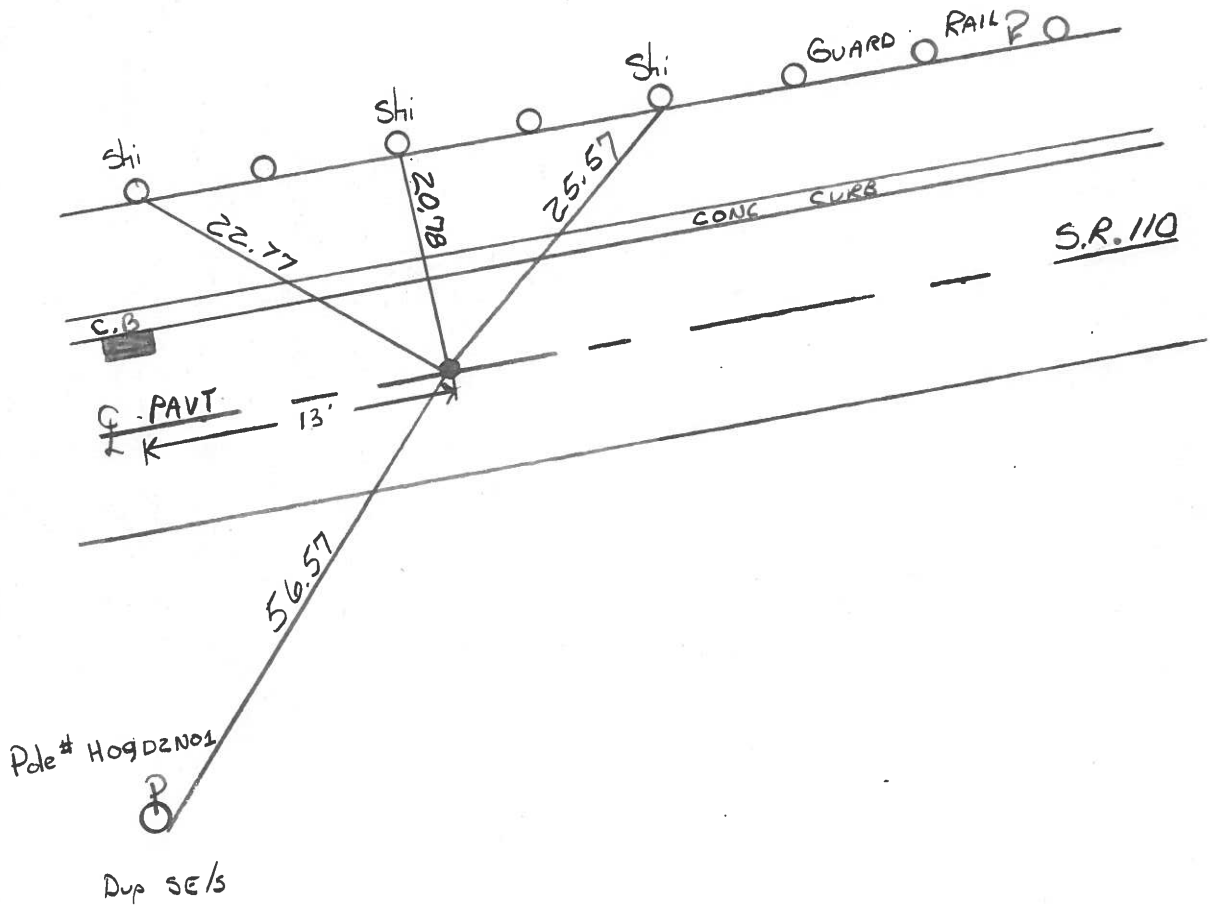
LEFT- & PAV'T. - RIGHT Yes

TO Lt EDGE PAVEMENT

S.L.M. 193+88



REC P.O.T.
Sta 199+13.15



County HENRY S.R. 110

Date 2-6-84

Township HARRISON

Weather CLOUDY

Section 9

Temp. +24°

T5N, R7E

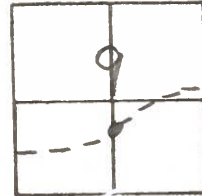
Personnel BARNHISEL HC

HOUSE HOLDER RC

HOFFMAN

LOETAKE

8E

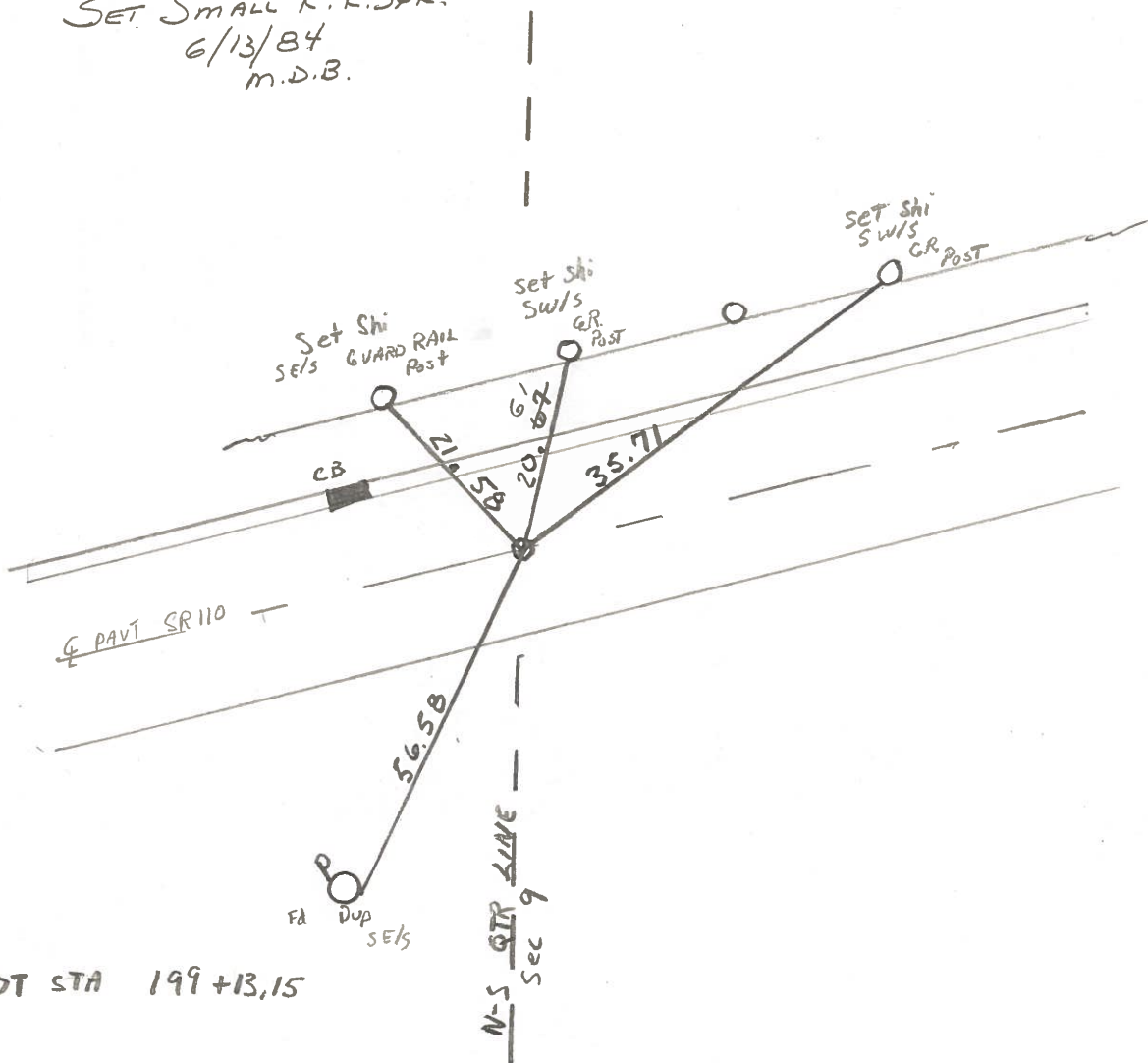


Fd 5/8" Pipe 1" Below SURFACE

SLM 193+98

ON & PAVT
14.0 To CURB @ LEP
7.5 To REP

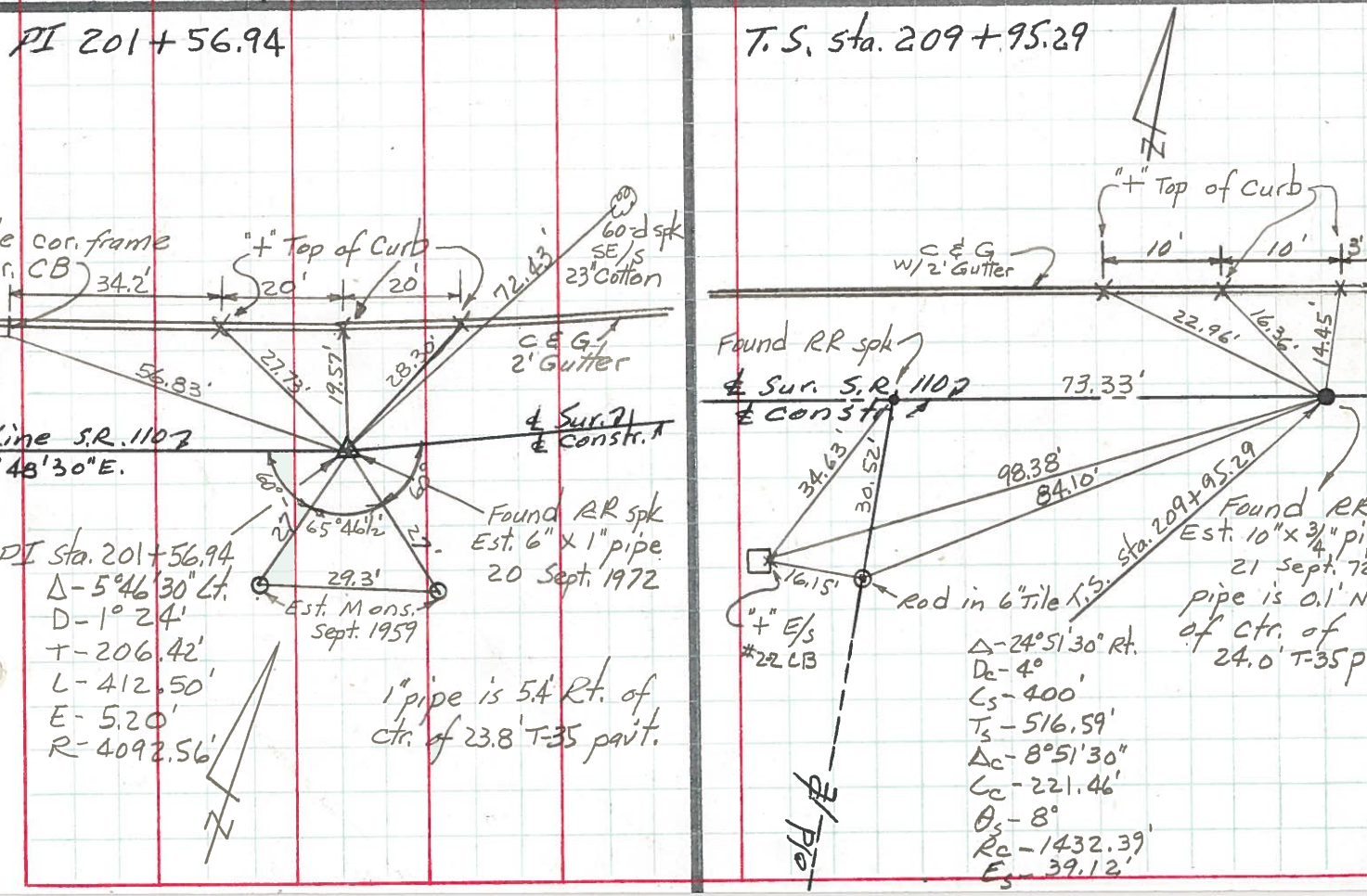
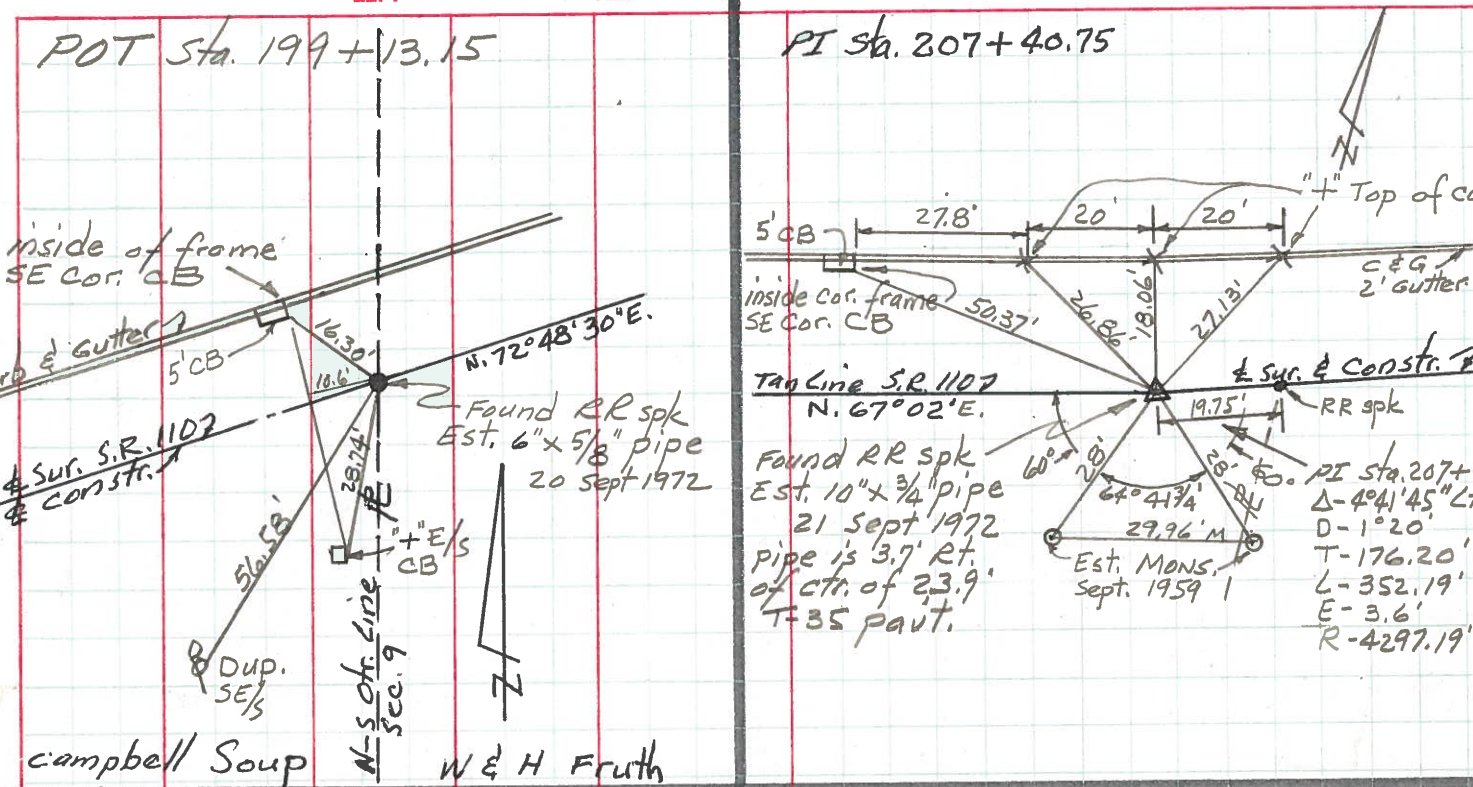
SET SMALL R.R. SPK.
6/13/84
M.D.B.



POT STA 199+13.15

PERSONNEL TITLE PERSONNEL TITLE COUNTY HENRY DATE Sept 1972
 Red Beach _____
 Newcomb _____
 Knappe _____
 S. R. 110 WEATHER _____
 SEC. 9 Harrison Twp. TEMP. _____

DESCRIPTION CONTROL POINTS JOB NO.



PERSONNEL	TITLE	PERSONNEL	TITLE	COUNTY	DATE		
<u>Beach</u>		<u>Rutter</u>		<u>Henry</u>	<u>Dec. 1957</u>		
<u>Armbruster</u>	<u>r</u>	<u>Hoff</u>		S. R. <u>110</u>	WEATHER		
<u>Harris</u>		<u>Kuchener</u>		SEC. <u>2.22</u>	TEMP		
<u>Knape</u>		<u>Delvanthial</u>		ALIGNMENT <u>sheet #4</u>			
DESCRIPTION				LEFT	CENTER LINE	RIGHT	JOB NO.

STATION EQUATION
 S.T. Sta. 220+16.75 BACK
 = Sta. 220+21.8% AHEAD
 Subtract 5.11'

Common P.I. Sta. 215+11.88
 Existing Pavt Proposed $\frac{1}{2}$ Constr.
 $\Delta = 24^{\circ}51'30''$ Lt. $\Delta = 24^{\circ}51'30''$ Lt.
 $D = 6'$ $D = 4'$
 $T = 210.46'$ $L_s = 400'$
 $L = 414.31'$ $T_s = 516.59'$
 $L_c = 221.46'$

STATION EQUATION
 P.T. Sta. 209+16.74 BACK
 = Sta. 209+16.77 AHEAD
 Subtract 0.03'

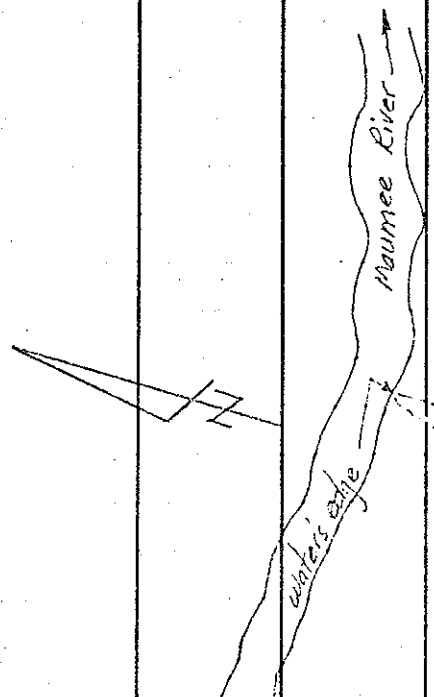
Common P.I. Sta. 207+40.75
 Existing Pavt Proposed $\frac{1}{2}$ Constr.
 $\Delta = 4^{\circ}41'45''$ Lt. $\Delta = 4^{\circ}41'45''$ Lt.
 $D = 1^{\circ}30'$ $D = 1^{\circ}20'$
 $T = 156.62'$ $T = 176.20'$
 $L = 313.06'$ $L = 352.19'$

Existing Pavt & Proposed $\frac{1}{2}$ Constr.
 P.I. Sta. 201+56.94
 $\Delta = 5^{\circ}46'30''$ Lt.
 $D = 1^{\circ}24'$
 $T = 206.44'$
 $L = 412.50'$

P.O.T. STA. 199+13.15 Est. RR spk.
 Found 12 Iron pipes.

STATION EQUATION
 P.T. STA 197+56.38 BACK
 = STA 197+56.42 AHEAD
 Subtract 0.04'

Common P.I. Sta. 195+53.41
 Existing Pavt Proposed $\frac{1}{2}$ Constr.
 $\Delta = 5^{\circ}25'$ Lt. $\Delta = 5^{\circ}25'$ Lt.
 $D = 1^{\circ}30'$ $D = 1^{\circ}20'$
 $T = 130.69'$ $T = 203.28'$
 $L = 361.11'$ $L = 406.25'$



EL. SP. 10.7
 4 JAN 24 57

50% Past Sec. 9 - 2017
 Previous Surveys
 found same