

O.D.O.T. DISTRICT 2 SURVEY OFFICE (USE ONLY)

PERSONNEL _____ REFERENCE NO. 9 A SHEET 32 OF 51

NOTES ASTON DATE 3/7/24 ROUTE SR 110
 H.C. NIESE WEATHER CLOUDY COUNTY HENRY
 R.C. ASTON TEMP. 45° TOWNSHIP HARRISON
 SECTION 9

DWG BY RHOADES PID 94321 T 5 N R 7 E

TYPE MONUMENT MAG/WASHER

ON SURFACE - ~~BELOW~~ ON _____

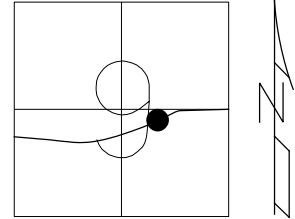
OFFSET C PAVEMENT 3.5' L : RT

8.8' TO RT EDGE PAVEMENT

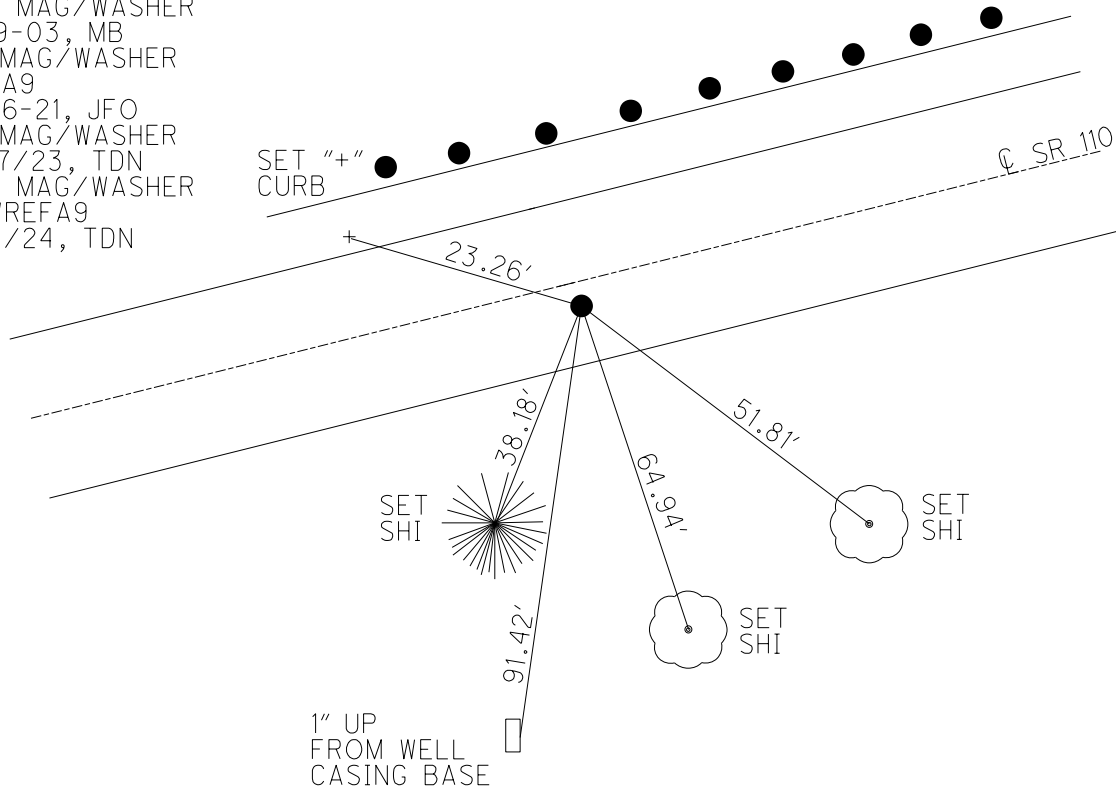
S.L.M. 202+29.10

HORIZ.DATUM: NAD83 (2011) GEOID: NAVD88 2018

GRID: NORTHING: 637479.459 EASTING: 1539435.491



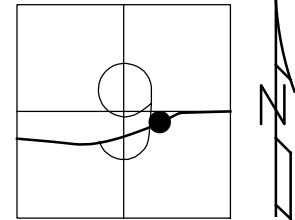
RECORD: P.I.
 STA 207+40.75
 $\Delta = 4^{\circ}41'45''$ LT
 $D = 1^{\circ}20'$
 $T = 176.20'$
 $L = 352.19'$
 $E = 3.6'$
 $R = 4297.19'$
 FD SM.R.R.SPIKE
 2" DOWN
 4-25-03
 SET MAG/WASHER
 6-19-03, MB
 FD MAG/WASHER
 REFA9
 5-06-21, JFO
 FD MAG/WASHER
 8/17/23, TDN
 SET MAG/WASHER
 NEWREFA9
 3/7/24, TDN



O.D.O.T. DISTRICT 2 SURVEY OFFICE (USE ONLY)

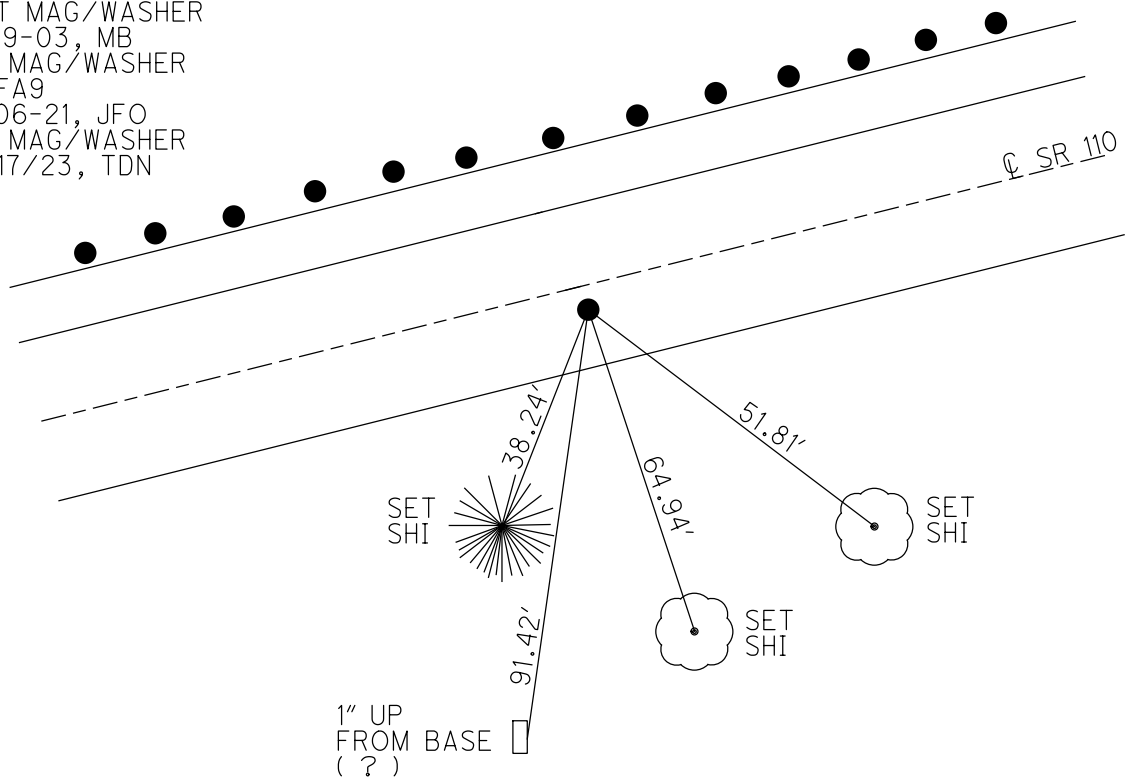
PERSONNEL _____ REFERENCE NO. 9 A SHEET 25 OF 44
 NOTES ASTON DATE 8/17/23 ROUTE SR 110
 H.C. NIESE WEATHER WINDY COUNTY HENRY
 R.C. RHOADES TEMP. 75° TOWNSHIP HARRISON
AUBLE SECTION 9
 DWG BY RHOADES PID 94321 T 5 N R 7 E

TYPE MONUMENT MAG/WASHER
 ON SURFACE - ~~BELOW~~ ON _____
 OFFSET \odot PAVEMENT 3.7' LT : RT
7.9' TO RT EDGE PAVEMENT
 S.L.M. 202+29.10



HORIZ.DATUM: NAD83 (2011) GEOID: NAVD88 2018
 GRID: NORTHING: 637479.521 EASTING: 1539435.504

RECORD: P.I.
 STA 207+40.75
 $\Delta = 4^{\circ}41' 45''$ LT
 $D = 1^{\circ}20'$
 $T = 176.20'$
 $L = 352.19'$
 $E = 3.6'$
 $R = 4297.19'$
 FD SM.R.R.SPIKE
 2" DOWN
 4-25-03
 SET MAG/WASHER
 6-19-03, MB
 FD MAG/WASHER
 REFA9
 5-06-21, JFO
 FD MAG/WASHER
 8/17/23, TDN



O.D.O.T. DISTRICT 2 SURVEY OFFICE

PERSONNEL

REFERENCE NO. S-A

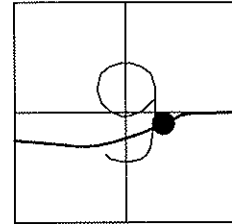
SHEET 12 OF 26

NOTES BRUMBAUGH
 H.C. BARNHISEL
 R.C. RYALL
GLASS

DATE 4-25-03
 WEATHER CLOUD
 TEMP. +60°

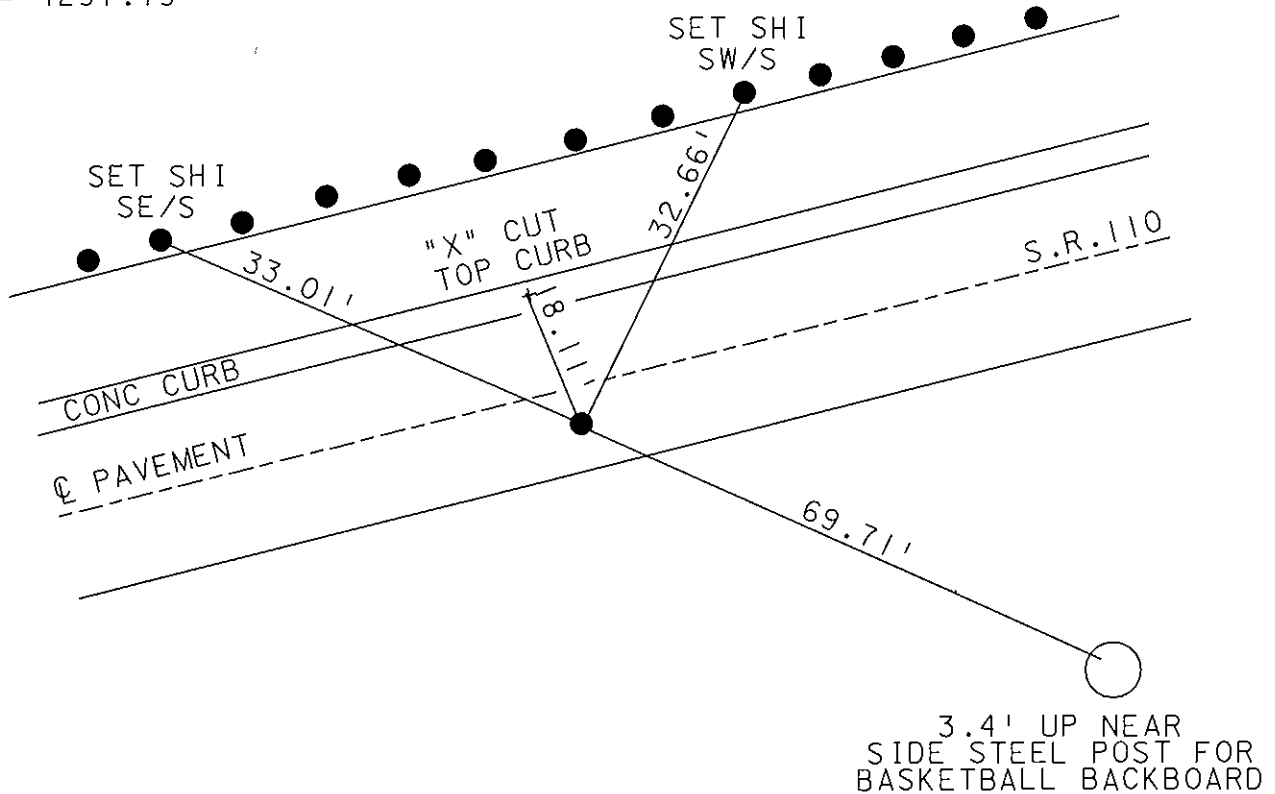
ROUTE S.R. 110
 COUNTY HENRY
 TOWNSHIP HARRISON
 SECTION 9
T 5 N R 7 E

TYPE MONUMENT SM. R.R. SPIKE
 ON SURFACE - BELOW 2"
 @ PAV'T - RIGHT 3.7'
7.9' TO RT. EDGE PAVEMENT
 S.L.M. 202+14



RECORD P.I. STA 207+40.75
 DELTA = 4°-41'-45" LT.
 D = 1°-20'
 T = 176.20'
 L = 352.19'
 E = 3.6'
 R = 4297.19'

RESET MAG NAIL & WASHER
 6-19-03
 MB



O.D.O.T. DISTRICT 2 SURVEY OFFICE

PERSONNEL

REFERENCE NO. 9A

SHEET 20 OF 34

NOTES LOEHRKE

H.C. CURTIS

R.C. ROMERO

DATE 5-28-92

WEATHER CLEAR

TEMP. +63

ROUTE S.R.110

COUNTY HENRY

TOWNSHIP HARRISON

SECTION 9

T 5 N R 7 E

Set P.K. / WASHER
10-27-92

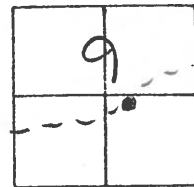
TYPE MONUMENT Sm. R.R. Spike

ON SURFACE - ~~BELOW~~ Yes

LEFT - ~~C~~ PAV'T. - RIGHT 3.4

8.7 TO Lt EDGE PAVEMENT

S.L.M. 202+14



REC P.I. Sta 207+40.75

$\Delta = 4^{\circ} 41' 45''$ Lt.

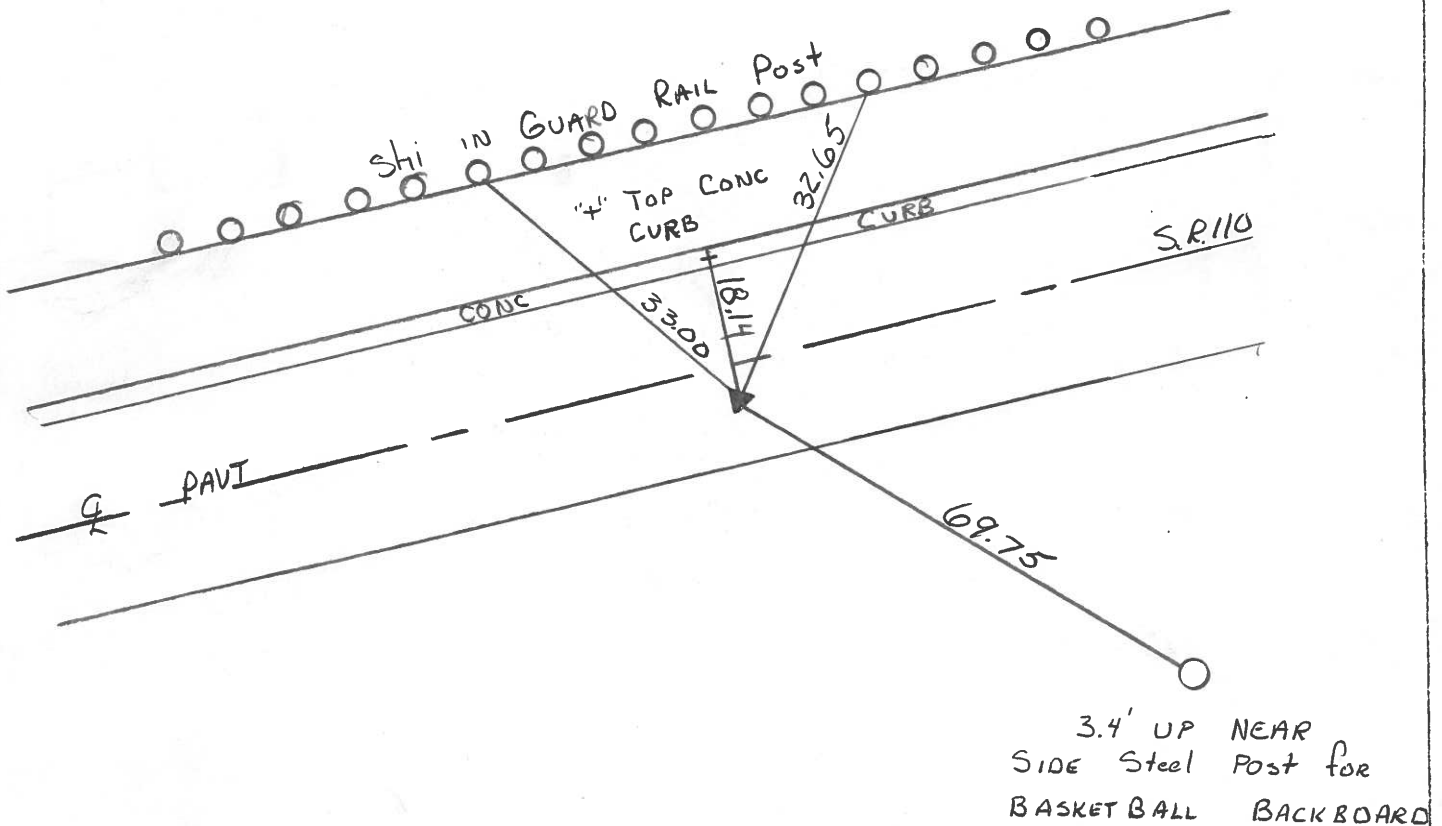
D = $1^{\circ} 20'$

T = 176.20'

L = 352.19'

E = 3.6'

R = 4297.19



County HENRY S.R. 110

Date 2-6-84

Township HARRISON

Weather FLURRIES

Section 9

Temp. +22°

T5N, R2E

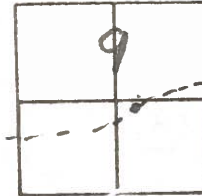
Personnel BANNHISEL HC

HOUSEHOLDER RC

HOFFMAN

LOEHRKE

9A



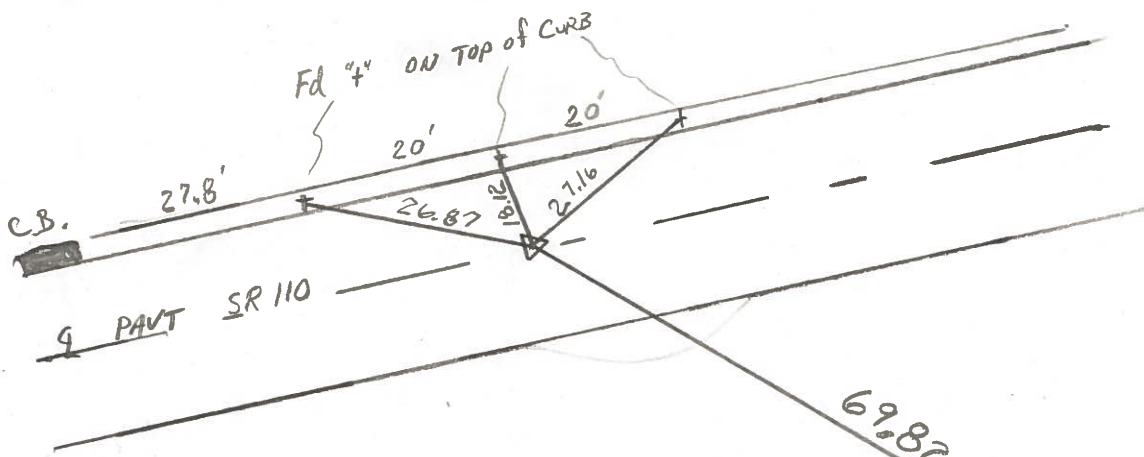
Fd 3/4 PIPE 1" BELOW SURFACE

SLM 202+26

4.1 RtoF Q PAVT

7.3 LF OF REP

SET SMALL P.F. SPK.
6/13/84
M.D.B.



PI STA 207+40.75

Δ 4'41'45" Lt

0-1°20'

T - 176.20'

L - 352.19'

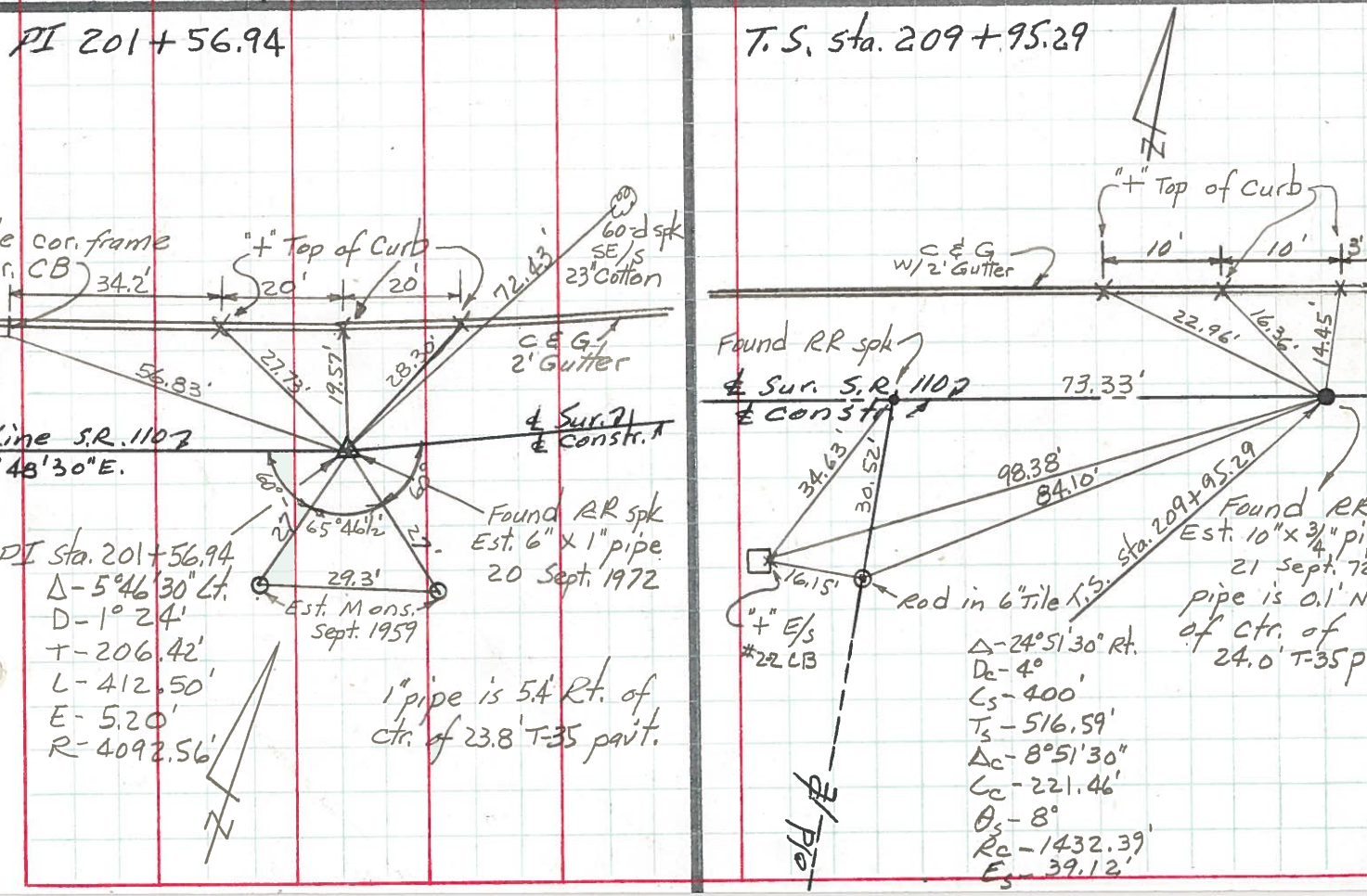
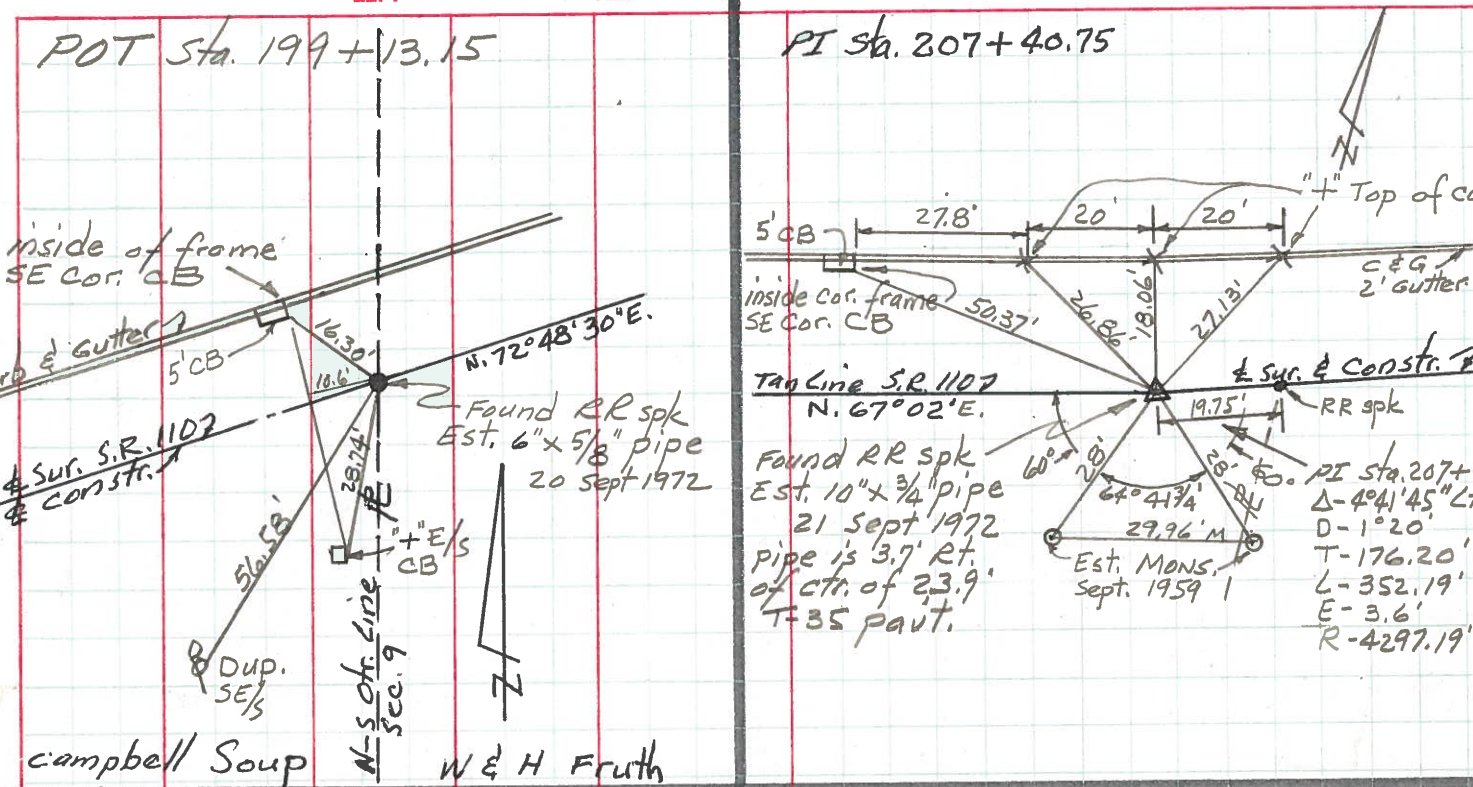
E - 3.6'

R 4297.19'

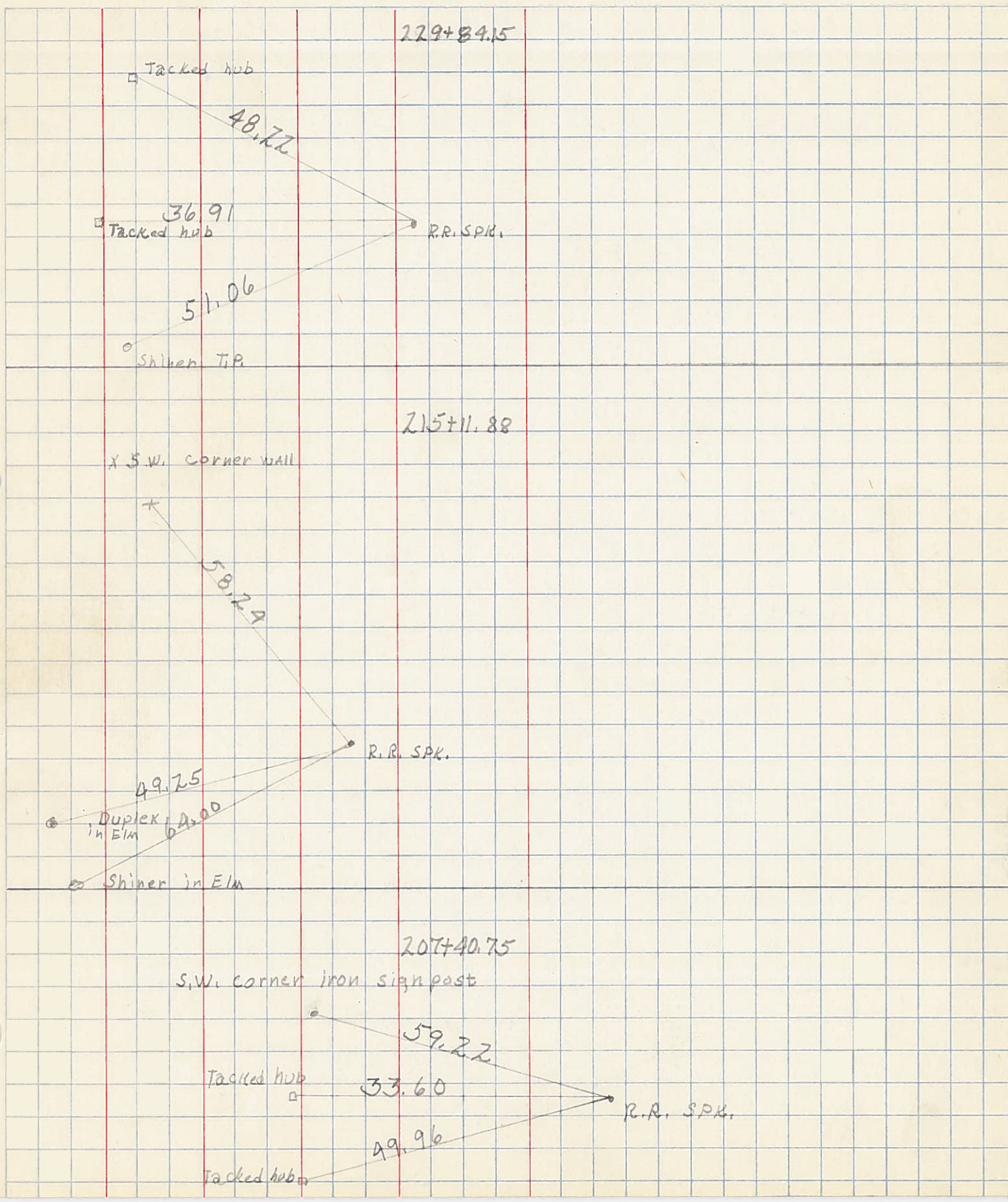
3.4 up
NEAR STEEL POST
SIDE BASKETBALL
BACKBOARD

PERSONNEL TITLE PERSONNEL TITLE COUNTY HENRY DATE Sept 1972
 Red Beach _____
 Newcomb _____
 Knappe _____
 S. R. 110 WEATHER _____
 SEC. 9 Harrison Twp. TEMP. _____

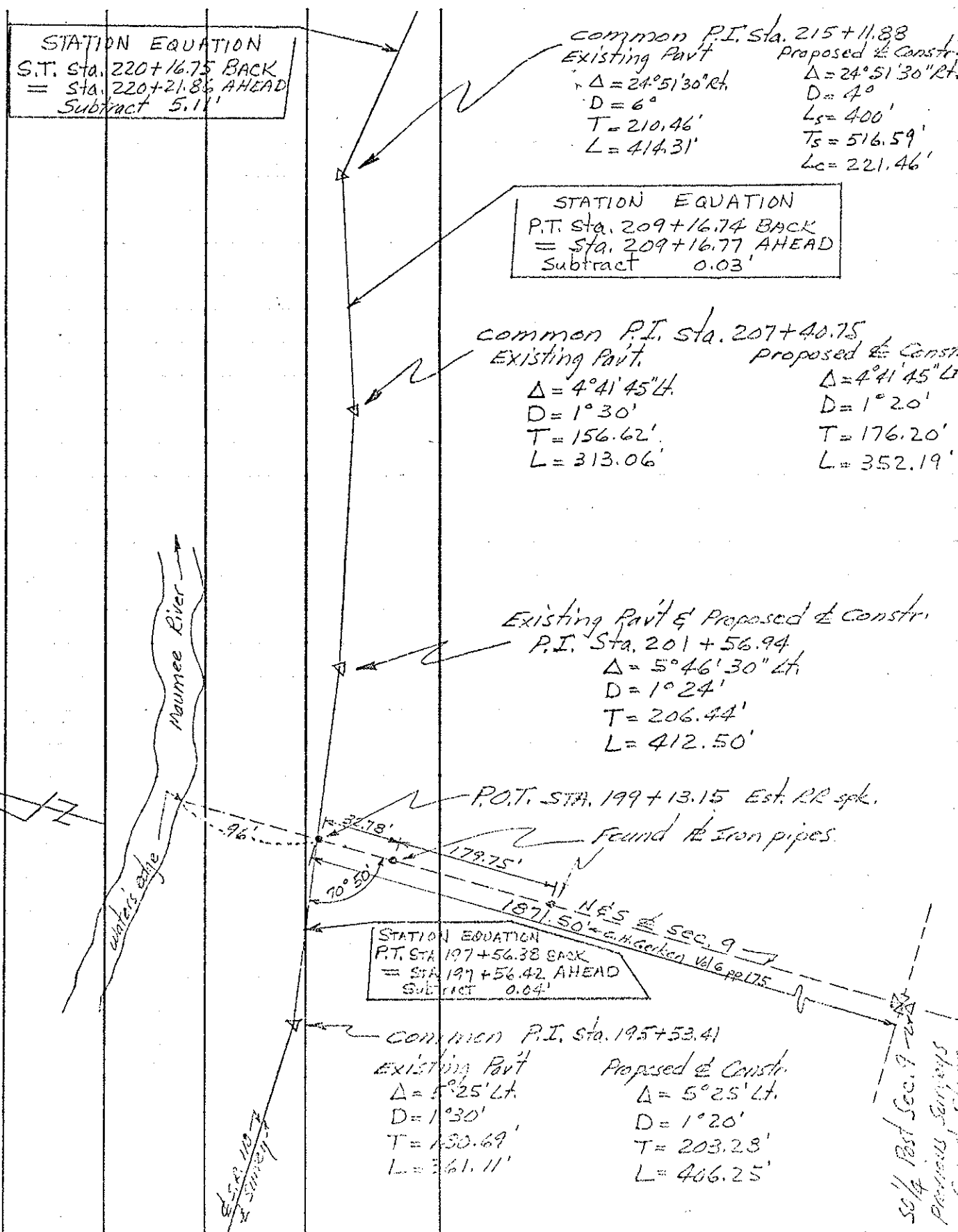
DESCRIPTION CONTROL POINTS JOB NO.



PERSONNEL	TITLE	PERSONNEL	TITLE	COUNTY	Henry	DATE	11-20-58
Ernsthausen				S. R.	110	WEATHER	Clear
Donaldson				SEC.		TEMP.	+55°
Tesst				DESCRIPTION	Ties To P.I.'s		JOB NO.



PERSONNEL	TITLE	PERSONNEL	TITLE	COUNTY	DATE
<u>Beach</u>		<u>Rutter</u>		<u>Henry</u>	<u>Dec. 1957</u>
<u>Armbruster</u>	<u>T</u>	<u>Hoff</u>		S. R. <u>110</u>	WEATHER
<u>Harris</u>		<u>Kuchener</u>		SEC. <u>2.22</u>	TEMP
<u>Knape</u>		<u>Delvanthial</u>		ALIGNMENT <u>sheet #4</u>	JOB NO.



STATION EQUATION
 S.T. Sta. 220+16.75 BACK
 = Sta. 220+21.8% AHEAD
 Subtract 5.11'

Common P.I. Sta. 215+11.88
 Existing Pavt. Proposed $\frac{1}{2}$ Constr.
 $\Delta = 24^{\circ}51'30''$ Lt. $\Delta = 24^{\circ}51'30''$ Lt.
 $D = 6'$ $D = 4'$
 $T = 210.46'$ $L_s = 400'$
 $L = 414.31'$ $T_s = 516.59'$
 $L_c = 221.46'$

STATION EQUATION
 P.T. Sta. 209+16.74 BACK
 = Sta. 209+16.77 AHEAD
 Subtract 0.03'

Common P.I. Sta. 207+40.75
 Existing Pavt. Proposed $\frac{1}{2}$ Constr.
 $\Delta = 4^{\circ}41'45''$ Lt. $\Delta = 4^{\circ}41'45''$ Lt.
 $D = 1^{\circ}30'$ $D = 1^{\circ}20'$
 $T = 156.62'$ $T = 176.20'$
 $L = 313.06'$ $L = 352.19'$

Existing Pavt & Proposed $\frac{1}{2}$ Constr.
 P.I. Sta. 201+56.94
 $\Delta = 5^{\circ}46'30''$ Lt.
 $D = 1^{\circ}24'$
 $T = 206.44'$
 $L = 412.50'$

STATION EQUATION
 P.T. Sta. 197+56.38 BACK
 = Sta. 197+56.42 AHEAD
 Subtract 0.04'

Common P.I. Sta. 195+53.41
 Existing Pavt. Proposed $\frac{1}{2}$ Constr.
 $\Delta = 5^{\circ}25'$ Lt. $\Delta = 5^{\circ}25'$ Lt.
 $D = 1^{\circ}30'$ $D = 1^{\circ}20'$
 $T = 130.69'$ $T = 203.28'$
 $L = 361.11'$ $L = 406.25'$

50% Post Sec. 9 - 20'
 Previous Surveys
 found same

PERSONNEL	TITLE	PERSONNEL	TITLE	COUNTY	DATE
<u>Beach</u>		<u>Hoff</u>		<u>Henry</u>	<u>Dec. 1957</u>
<u>Armbruster</u>	<u>x</u>	<u>Harris</u>		S. R. <u>110</u>	WEATHER _____
<u>Ruffer</u>		<u>Rybenor</u>		SEC. <u>2.22</u>	TEMP. _____
<u>Knape</u>		<u>Delventral</u>			

DESCRIPTION: CONTROL POINTS 4 JOB NO. _____

